

Monthly Statistics

Jan-2010

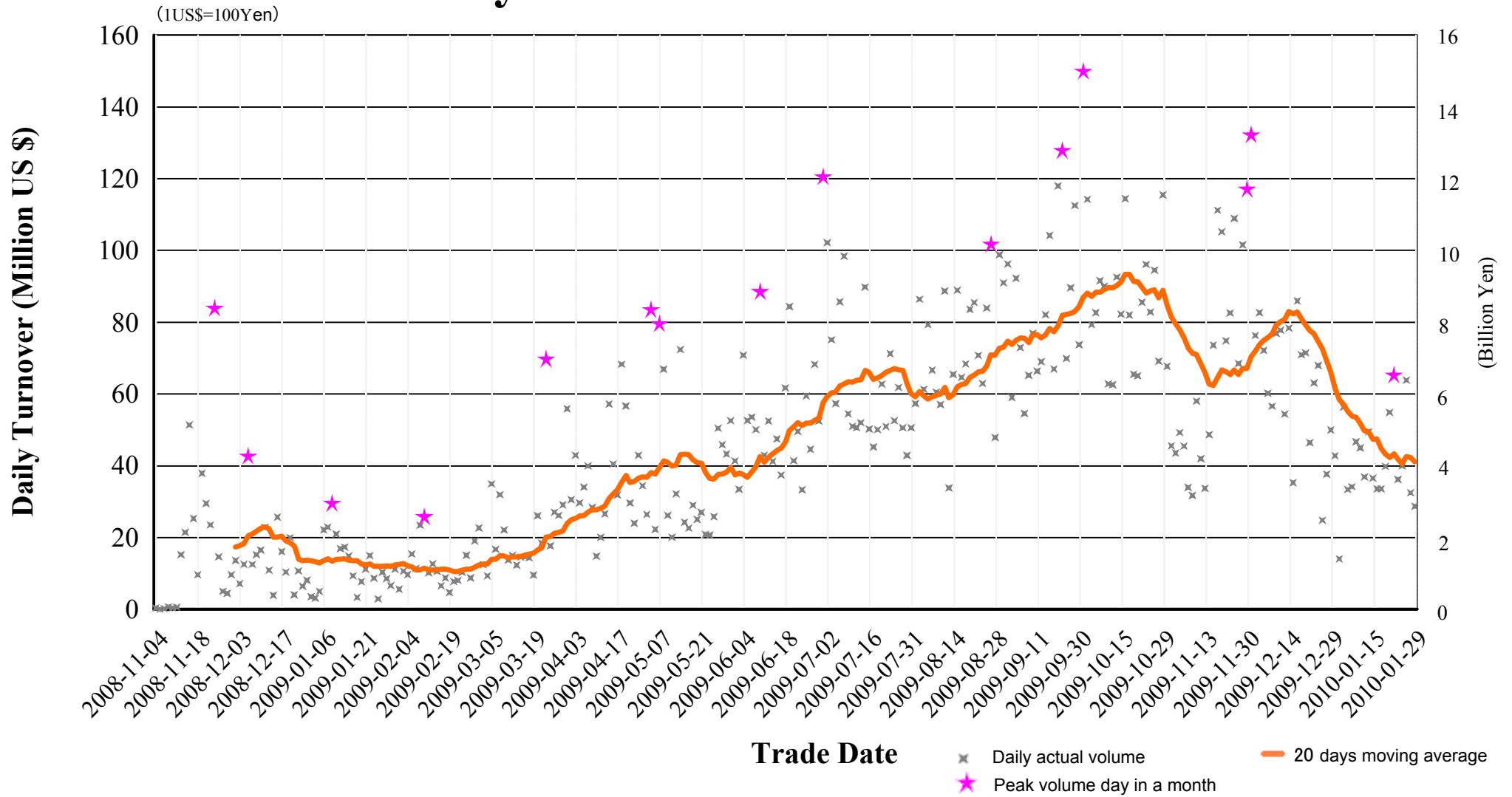
Japannext PTS

SBI Japannext Co., Ltd

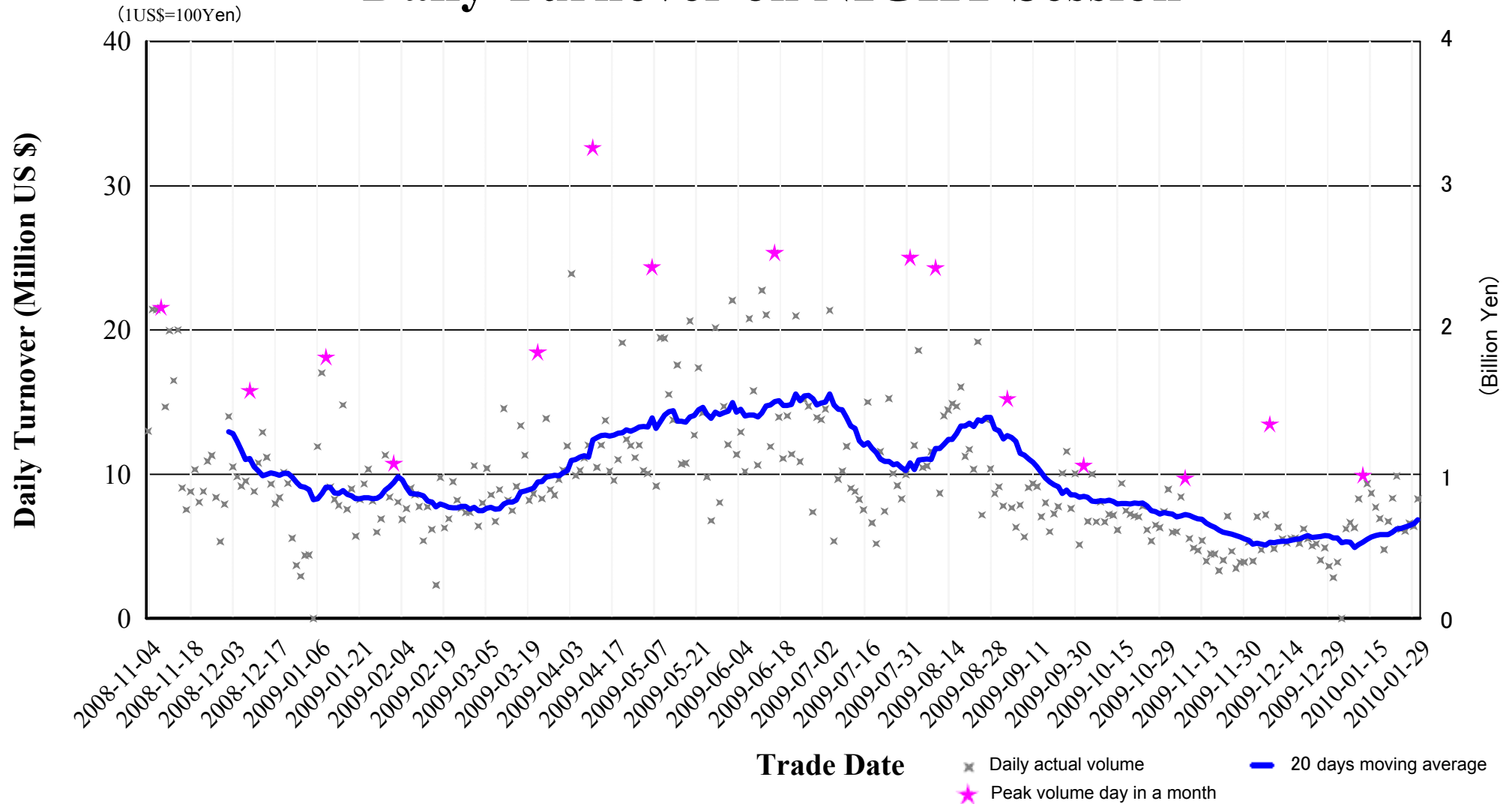
Disclaimer

Information provided is for reference purposes and does not constitute financial product advice nor is construed as an offer to sell or the solicitation of an offer to buy any security. The ownership and the intellectual property rights of this information solely and exclusively belong to SBI Japannext Co.,Ltd. (“SBIJ”). Accordingly users are permitted to get an access and use of the Information for their own personal, non-commercial and internal use only. Although SBIJ has made every effort to ensure the accuracy of the information as at the date of publication, SBIJ does not give any warranty or representation as to the accuracy, reliability or completeness of the information. To the extent permitted by law, SBIJ and its employees, officers and contractors shall not be liable for any loss or damage arising in any way (including by way of negligence) from or in connection with any information provided or omitted or from any one acting or refraining to act in reliance on this information.

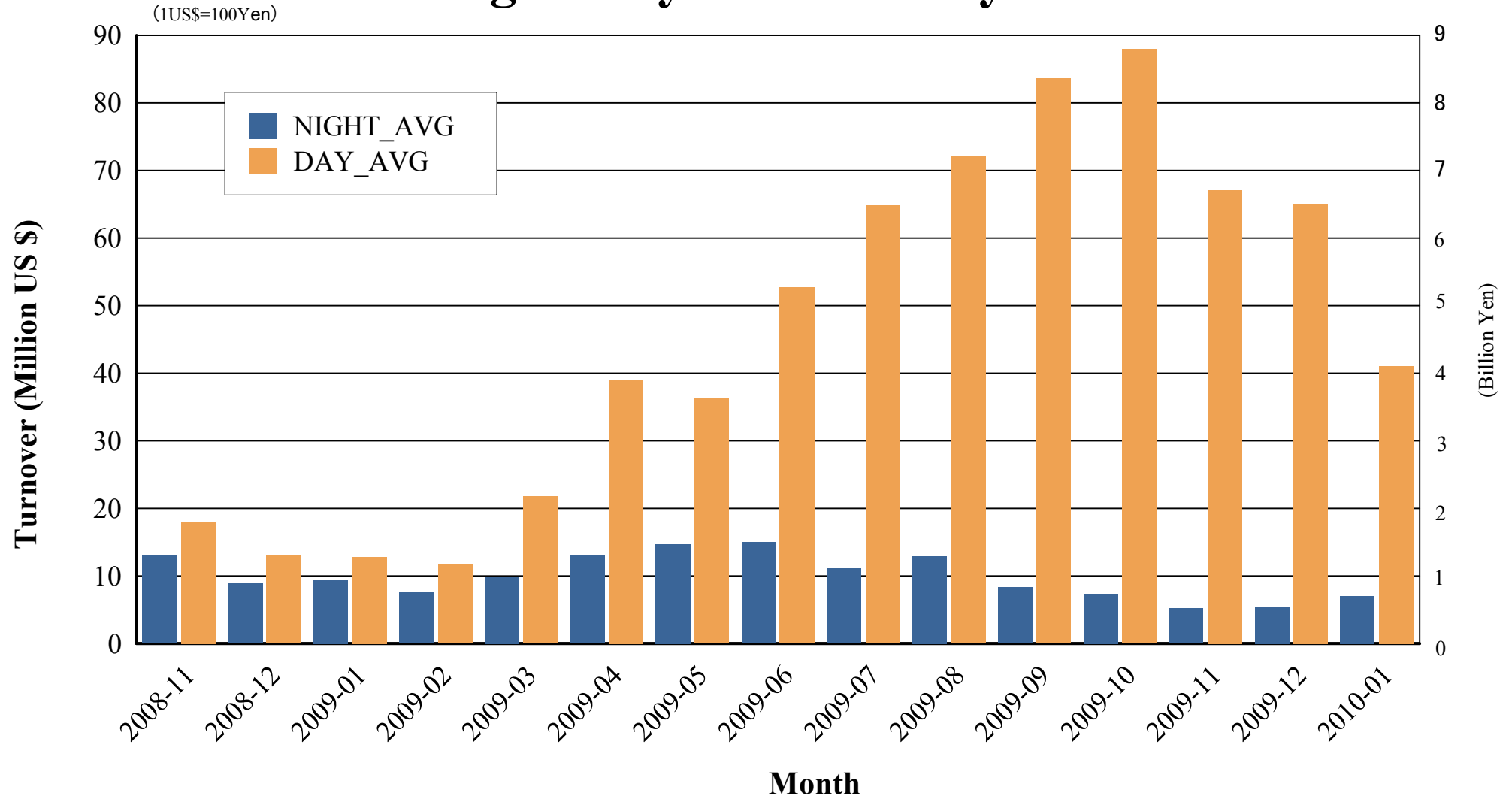
Daily Turnover on DAY Session



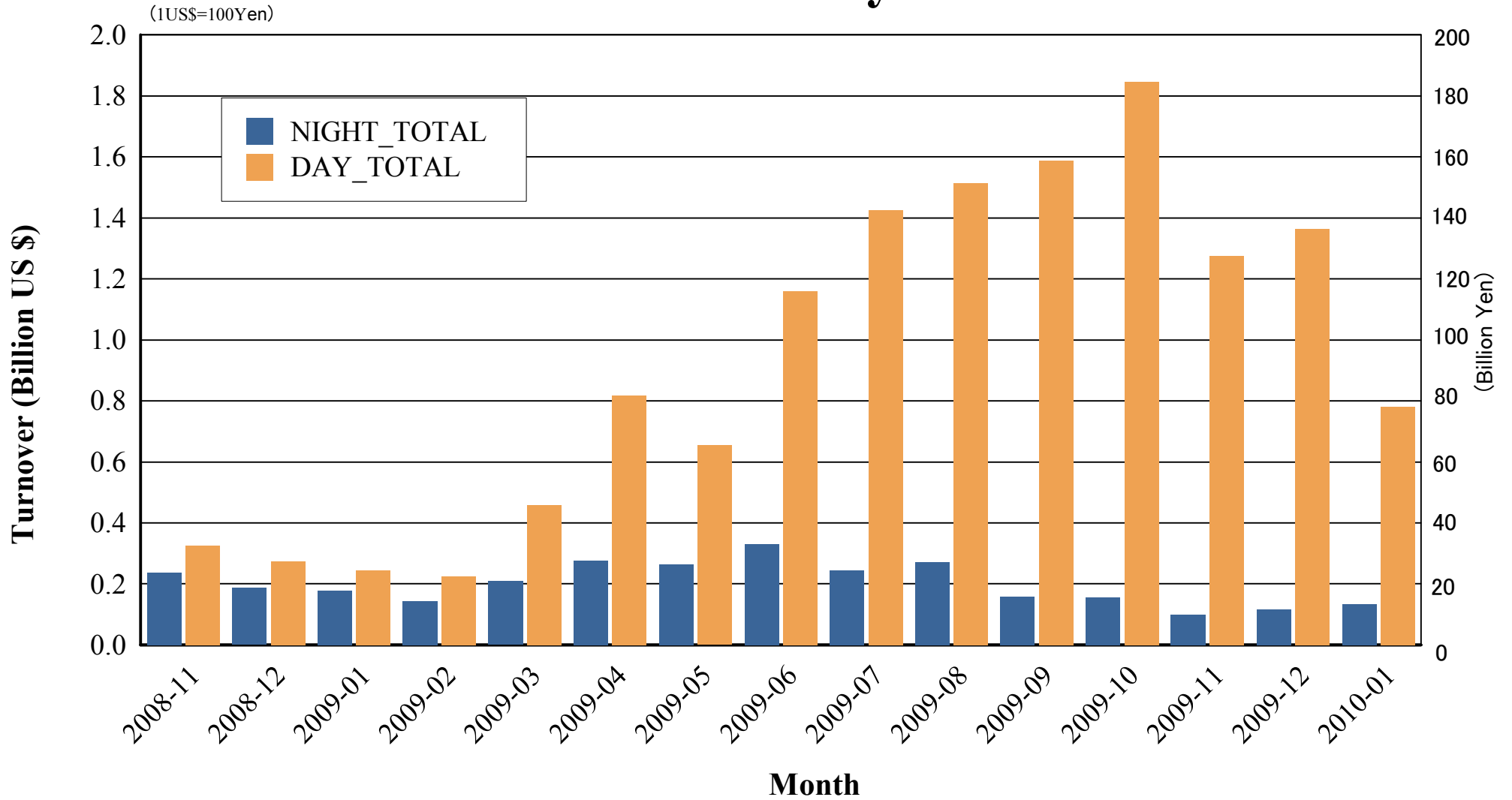
Daily Turnover on NIGHT Session



Average Daily Turnover by Month



Total Turnover by Month



"Daytime Session" Statistics

Nikkei 225 (Jan-2010)

SELL

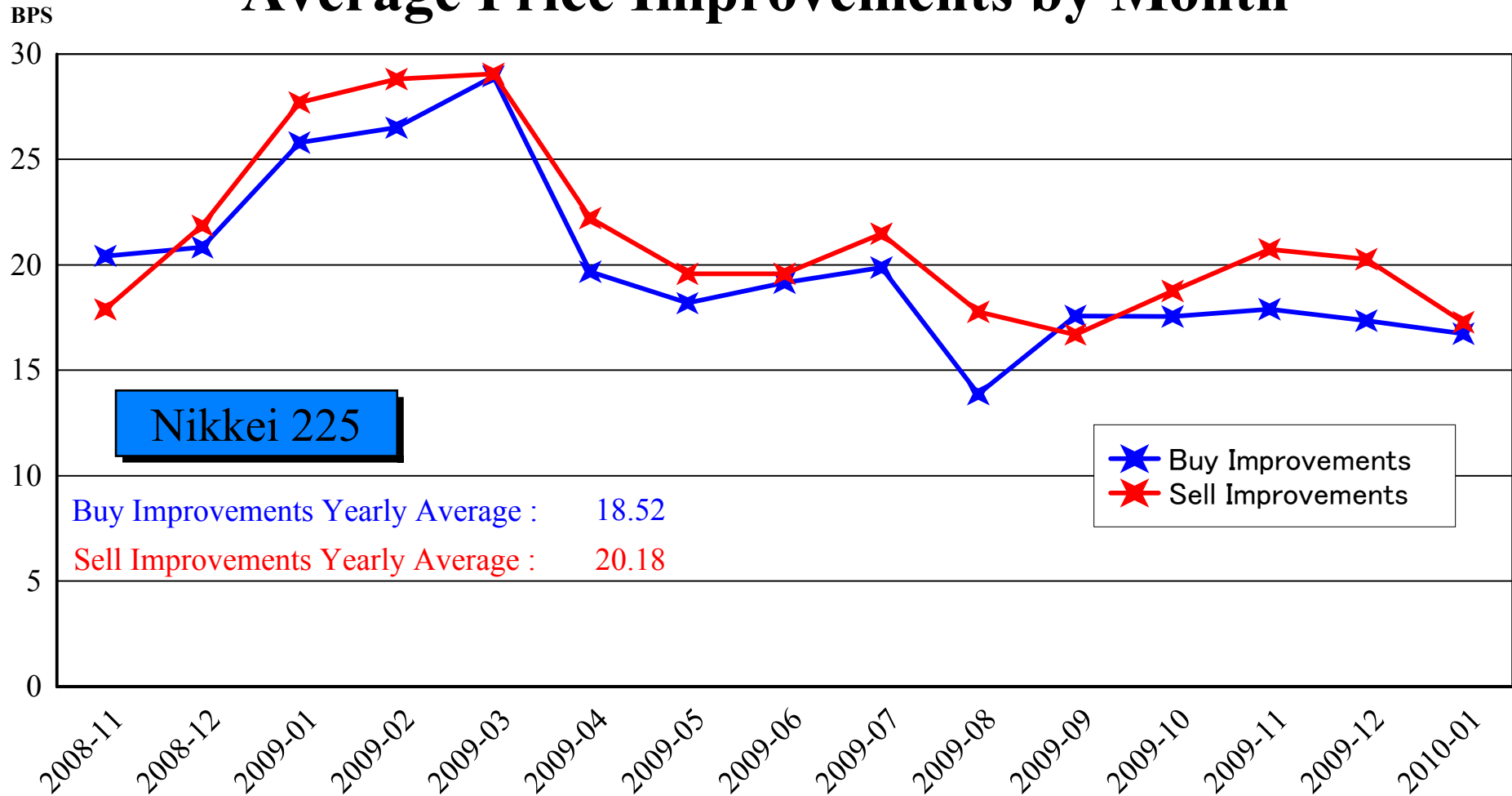
BUY

A. Worse Price Executions	1,669 (2.17%)	1,855 (2.41%)
B. Equal Price Executions	13,065 (17.00%)	15,144 (19.70%)
C. Better Price Executions	62,124 (80.83%)	59,859 (77.88%)
	<hr/>	
B + C	97.83%	97.59%
A'. Avg. Price Declines	-6.65BPS	-6.71BPS
C'. Avg. Price Improvements	17.28BPS	16.73BPS

Note1: Excluded the executions from before 9AM, lunch break, and after 3PM

Note2: Avg. Price Improvements are based on Japannext vs. Primary Exchange prices

Average Price Improvements by Month



Note1: Excluded the executions from before 9AM, lunch break, and after 3PM

Note2: Avg. Price Improvements are based on Japannext vs. Primary Exchange prices

Day/Night Monthly Turnover for Top 25 Names (Jan-2010)

(DAY Session)

	SYMBOL	DESCRIPTION	TEUNOVER (Million US\$ 1US\$=1Yen)
1	8306	MITSUBISHI UFJ FINANCIAL GROUP, INC.	36.71
2	8411	MIZUHO FINANCIAL GROUP, INC.	27.18
3	7203	TOYOTA MOTOR CORP.	22.02
4	8604	NOMURA HOLDINGS, INC.	20.19
5	7751	CANON INC.	17.12
6	7267	HONDA MOTOR CO., LTD.	14.77
7	7201	NISSAN MOTOR CO., LTD.	13.43
8	6501	HITACHI, LTD.	11.69
9	6502	TOSHIBA CORP.	9.30
10	2914	JAPAN TOBACCO INC.	9.07
11	6702	FUJITSU LTD.	8.95
12	5401	NIPPON STEEL CORP.	8.82
13	8802	MITSUBISHI ESTATE CO., LTD.	8.14
14	7011	MITSUBISHI HEAVY IND., LTD.	7.50
15	6971	KYOCERA CORP.	7.40
16	6701	NEC CORP.	7.08
17	6954	FANUC LTD.	6.61
18	5405	SUMITOMO METAL IND., LTD.	6.55
19	9432	NIPPON TELEGRAPH & TELEPHONE CORP.	6.46
20	8031	MITSUMI & CO., LTD.	6.22
21	8035	TOKYO ELECTRON LTD.	6.08
22	9433	KDDI CORP.	5.83
23	6758	SONY CORP.	5.83
24	4063	SHIN-ETSU CHEMICAL CO., LTD.	5.51
25	4005	SUMITOMO CHEMICAL CO., LTD.	5.51

(NIGHT Session)

highlight : "Common" names for Day & NightTime

	SYMBOL	DESCRIPTION	TURNOVER (Million US\$ 1US\$=1Yen)
1	8316	SUMITOMO MITSUI FINANCIAL GROUP, INC.	11.78
2	9205	JAPAN AIRLINES CORP.	10.01
3	8411	MIZUHO FINANCIAL GROUP, INC.	9.41
4	8306	MITSUBISHI UFJ FINANCIAL GROUP, INC.	8.45
5	8913	ZECS CO., LTD.	5.94
6	6501	HITACHI, LTD.	4.86
7	7203	TOYOTA MOTOR CORP.	4.54
8	7974	NINTENDO CO., LTD.	3.59
9	7267	HONDA MOTOR CO., LTD.	2.25
10	8058	MITSUBISHI CORP.	2.04
11	8604	NOMURA HOLDINGS, INC.	1.97
12	6502	TOSHIBA CORP.	1.84
13	6758	SONY CORP.	1.63
14	3236	PROPERST CO., LTD.	1.60
15	8815	TOKYU LAND CORP.	1.45
16	7201	NISSAN MOTOR CO., LTD.	1.32
17	9983	FAST RETAILING CO., LTD.	1.29
18	6301	KOMATSU LTD.	1.24
19	6764	SANYO ELECTRIC CO., LTD.	1.19
20	6752	PANASONIC CORP.	1.05
21	4502	TAKEDA PHARMACEUTICAL CO., LTD.	1.05
22	7751	CANON INC.	0.97
23	6665	ELPIDA MEMORY, INC.	0.92
24	9202	ALL NIPPON AIRWAYS CO., LTD.	0.86
25	3632	GREE, INC.	0.79

Improvements of Monthly Turnover for Top 25 Names (Jan-2010)

(Daytime Session)

	RIC	NAME	Sell Executions							Improve Avg. BPS	Buy Executions							Improve Avg. BPS
			Worse(A)		Equal(B)		Better(C)		(B) + (C)		Worse(A)		Equal(B)		Better(C)		(B) + (C)	
1	8306.T	MUFG	23	0.69%	688	20.56%	2,636	78.76%	99.31%	14.19	23	0.69%	687	20.53%	2,637	78.79%	99.31%	12.54
2	8411.T	MIZUHO	7	0.16%	392	8.82%	4,047	91.03%	99.84%	38.14	53	1.19%	651	14.64%	3,742	84.17%	98.81%	24.71
3	7203.T	TOYOTA	16	1.47%	342	31.32%	734	67.22%	98.53%	10.25	10	0.92%	365	33.42%	717	65.66%	99.08%	8.94
4	8604.T	NOMRAHD	15	1.07%	386	27.53%	1,001	71.40%	98.93%	10.31	34	2.43%	439	31.31%	929	66.26%	97.57%	10.30
5	7751.T	CANON	11	1.30%	171	20.19%	665	78.51%	98.70%	10.61	28	3.31%	311	36.72%	508	59.98%	96.69%	9.08
6	7267.T	HONDA	7	0.81%	188	21.76%	669	77.43%	99.19%	10.22	14	1.62%	205	23.73%	645	74.65%	98.38%	10.78
7	7201.T	NISSAN	31	2.29%	555	41.05%	766	56.66%	97.71%	8.83	5	0.37%	322	23.82%	1,025	75.81%	99.63%	11.18
8	6501.T	HITACHI	4	0.43%	206	22.20%	718	77.37%	99.57%	15.55	3	0.32%	79	8.51%	846	91.16%	99.68%	23.42
9	6502.T	TOSHIBA	2	0.47%	109	25.35%	319	74.19%	99.53%	11.62	11	2.56%	78	18.14%	341	79.30%	97.44%	13.93
10	2914.T	JT	23	2.83%	171	21.03%	619	76.14%	97.17%	10.32	9	1.11%	204	25.09%	600	73.80%	98.89%	11.15
11	6702.T	FUJITSU	16	3.70%	120	27.71%	297	68.59%	96.30%	11.64	4	0.92%	93	21.48%	336	77.60%	99.08%	13.62
12	5401.T	NPSTEEL	10	1.57%	71	11.15%	556	87.28%	98.43%	14.24	8	1.26%	60	9.42%	569	89.32%	98.74%	17.49
13	8802.T	MTB-EST	19	5.07%	60	16.00%	296	78.93%	94.93%	6.80	30	8.00%	66	17.60%	279	74.40%	92.00%	5.67
14	7011.T	MHI	12	1.38%	141	16.19%	718	82.43%	98.62%	16.29	17	1.95%	101	11.60%	753	86.45%	98.05%	19.57
15	6971.T	KYOCERA	2	1.08%	61	32.97%	122	65.95%	98.92%	8.69	8	4.32%	25	13.51%	152	82.16%	95.68%	9.73
16	6701.T	NEC	10	2.81%	108	30.34%	238	66.85%	97.19%	21.39	3	0.84%	45	12.64%	308	86.52%	99.16%	30.12
17	6954.T	FANUC	15	6.49%	53	22.94%	163	70.56%	93.51%	8.11	4	1.73%	53	22.94%	174	75.32%	98.27%	9.48
18	5405.T	SMI-MTI	12	1.73%	82	11.80%	601	86.47%	98.27%	22.95	15	2.16%	86	12.37%	594	85.47%	97.84%	21.98
19	9432.T	NTT	8	1.25%	124	19.41%	507	79.34%	98.75%	11.77	2	0.31%	336	52.58%	301	47.10%	99.69%	8.40
20	8031.T	mitsui	55	6.03%	168	18.42%	689	75.55%	93.97%	6.10	69	7.57%	183	20.07%	660	72.37%	92.43%	5.74
21	8035.T	TKOELCN	8	1.97%	52	12.81%	346	85.22%	98.03%	10.88	3	0.74%	95	23.40%	308	75.86%	99.26%	11.24
22	9433.T	KDDI	1	0.27%	18	4.86%	351	94.86%	99.73%	11.29	3	0.81%	40	10.81%	327	88.38%	99.19%	8.87
23	6758.T	SONY	17	3.46%	118	23.98%	357	72.56%	96.54%	9.62	13	2.64%	103	20.93%	376	76.42%	97.36%	12.05
24	4063.T	SINETUC	6	1.24%	49	10.17%	427	88.59%	98.76%	12.52	6	1.24%	175	36.31%	301	62.45%	98.76%	10.61
25	4005.T	SMICHEM	13	2.11%	303	49.11%	301	48.78%	97.89%	15.04	4	0.65%	69	11.18%	544	88.17%	99.35%	19.88

Note1: Excluded the executions from before 9AM, lunch break, and after 3PM

Note2: Avg. Price Improvements are based on Japannext vs. Primary Exchange prices