

Monthly Statistics

Mar-2010

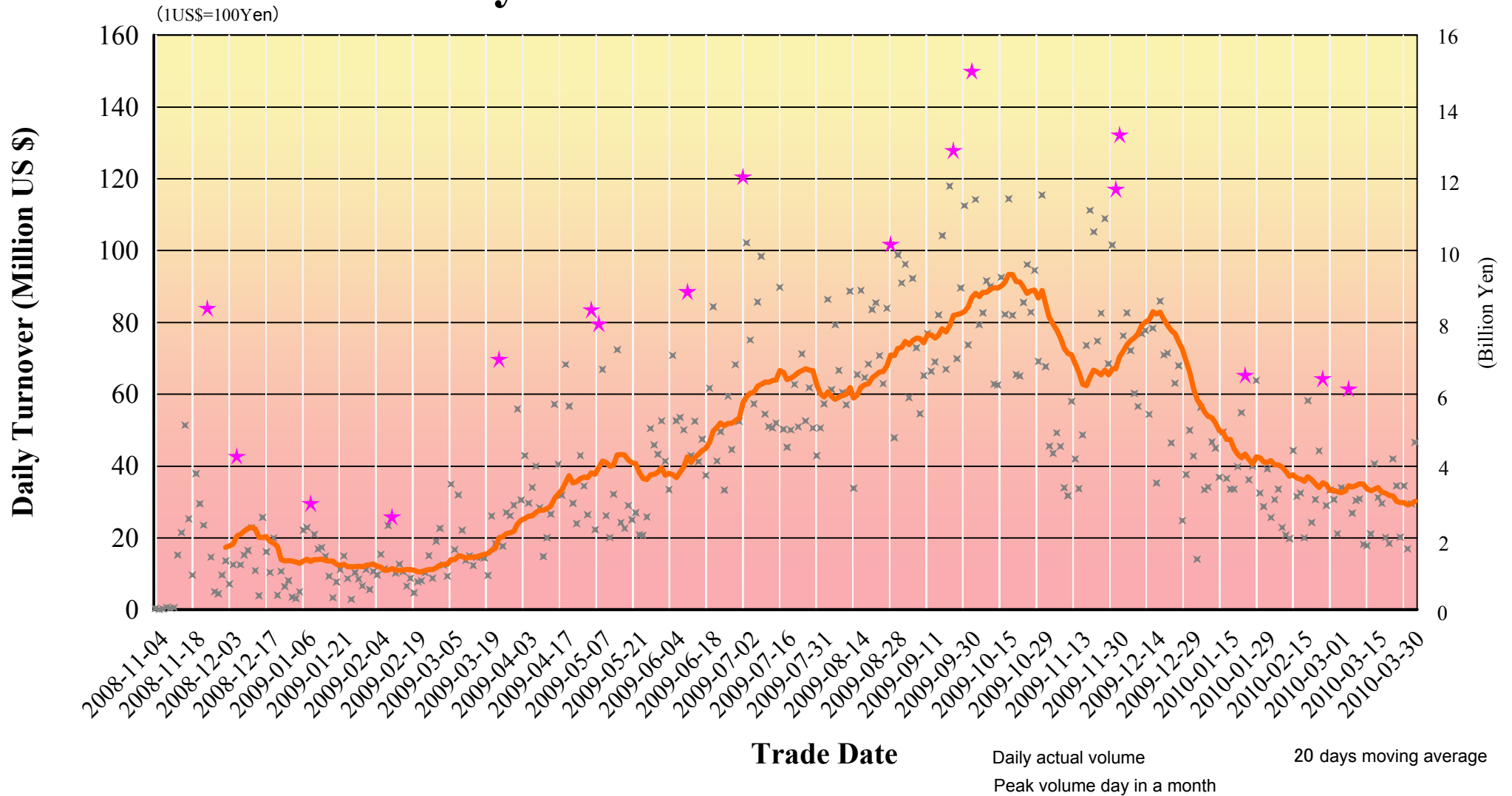
Japannext PTS

SBI Japannext Co., Ltd

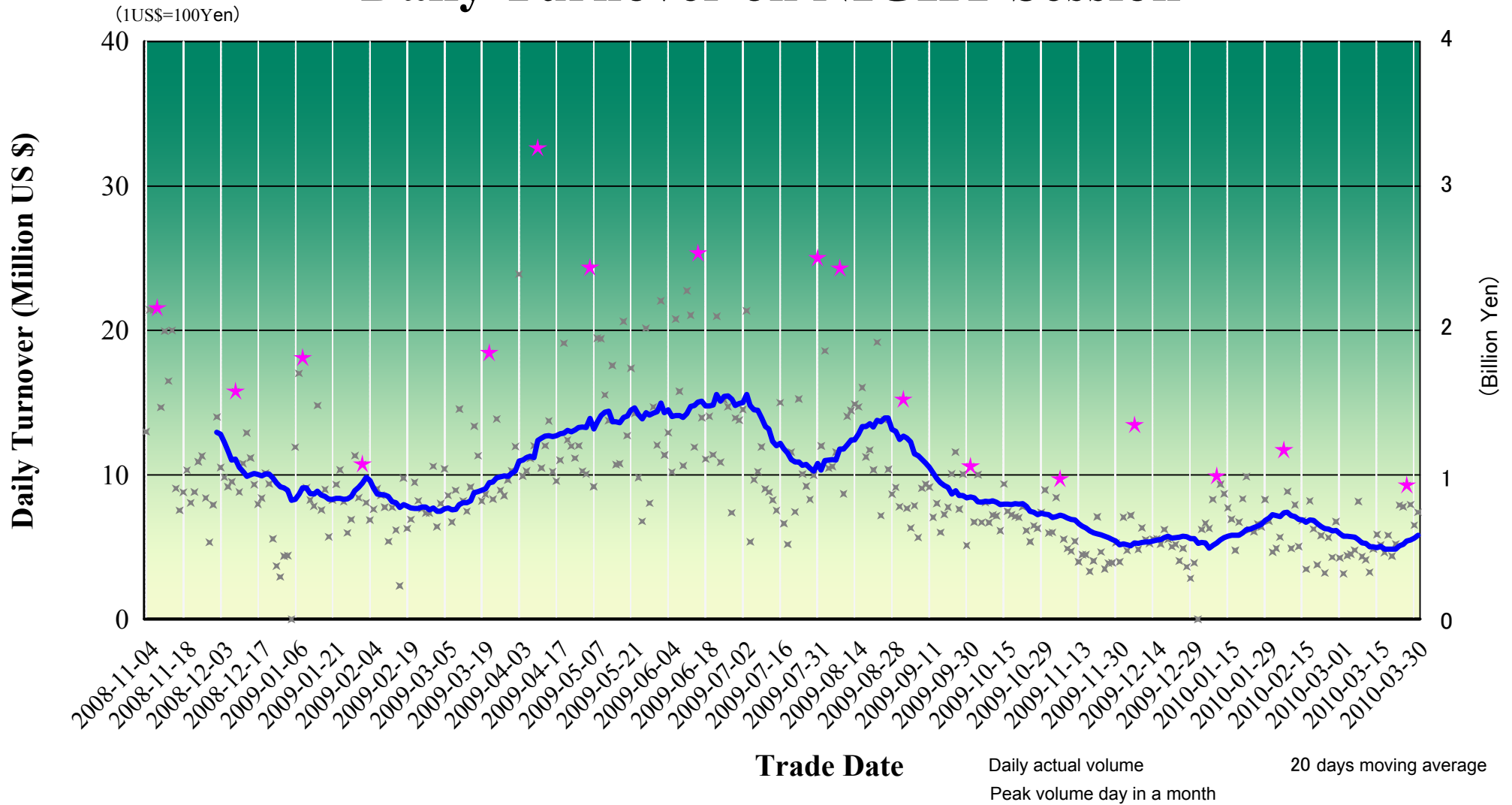
Disclaimer

Information provided is for reference purposes and does not constitute financial product advice nor is construed as an offer to sell or the solicitation of an offer to buy any security. The ownership and the intellectual property rights of this information solely and exclusively belong to SBI Japannext Co.,Ltd. (“SBIJ”). Accordingly users are permitted to get an access and use of the Information for their own personal, non-commercial and internal use only. Although SBIJ has made every effort to ensure the accuracy of the information as at the date of publication, SBIJ does not give any warranty or representation as to the accuracy, reliability or completeness of the information. To the extent permitted by law, SBIJ and its employees, officers and contractors shall not be liable for any loss or damage arising in any way (including by way of negligence) from or in connection with any information provided or omitted or from any one acting or refraining to act in reliance on this information.

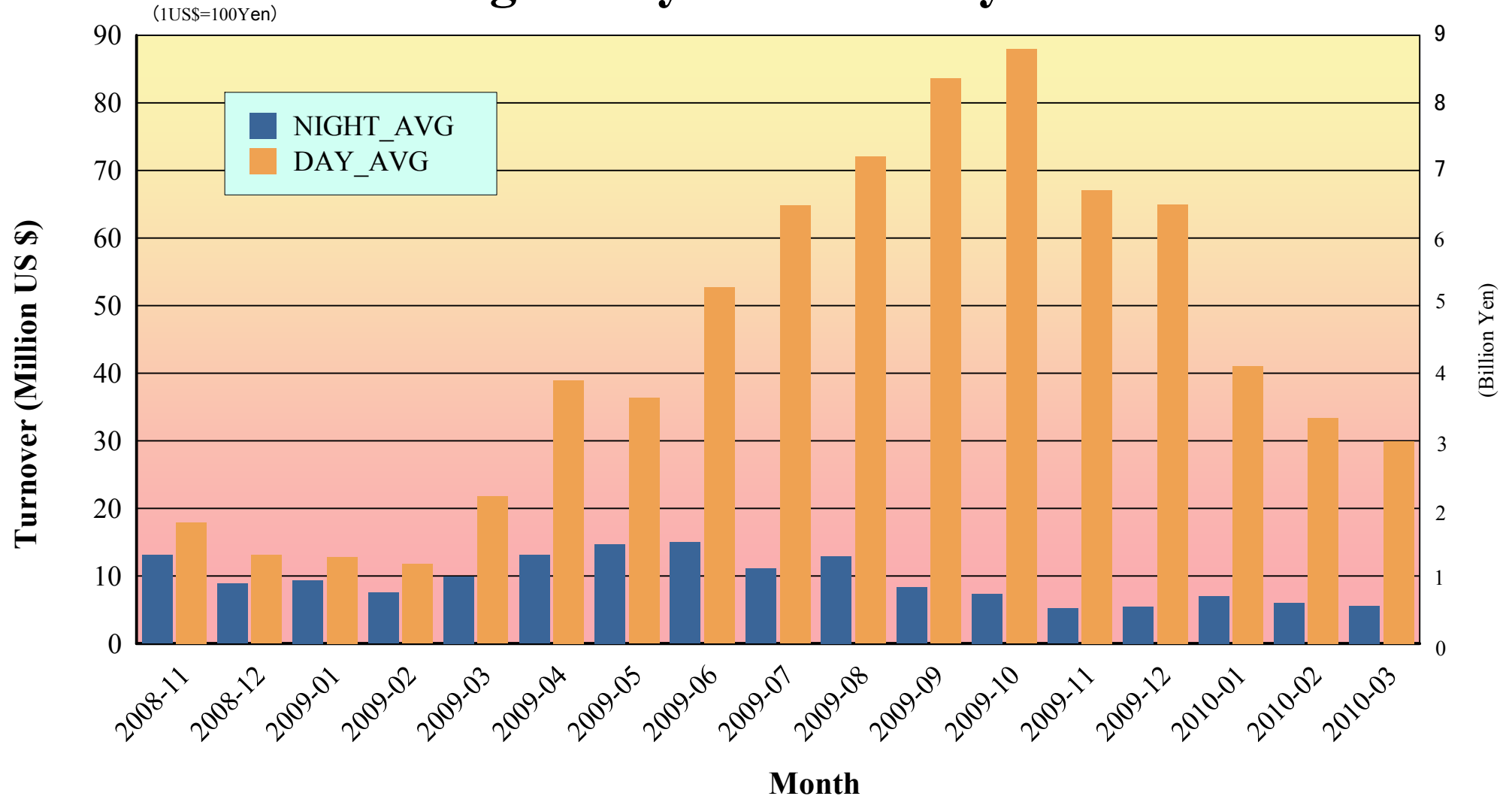
Daily Turnover on DAY Session



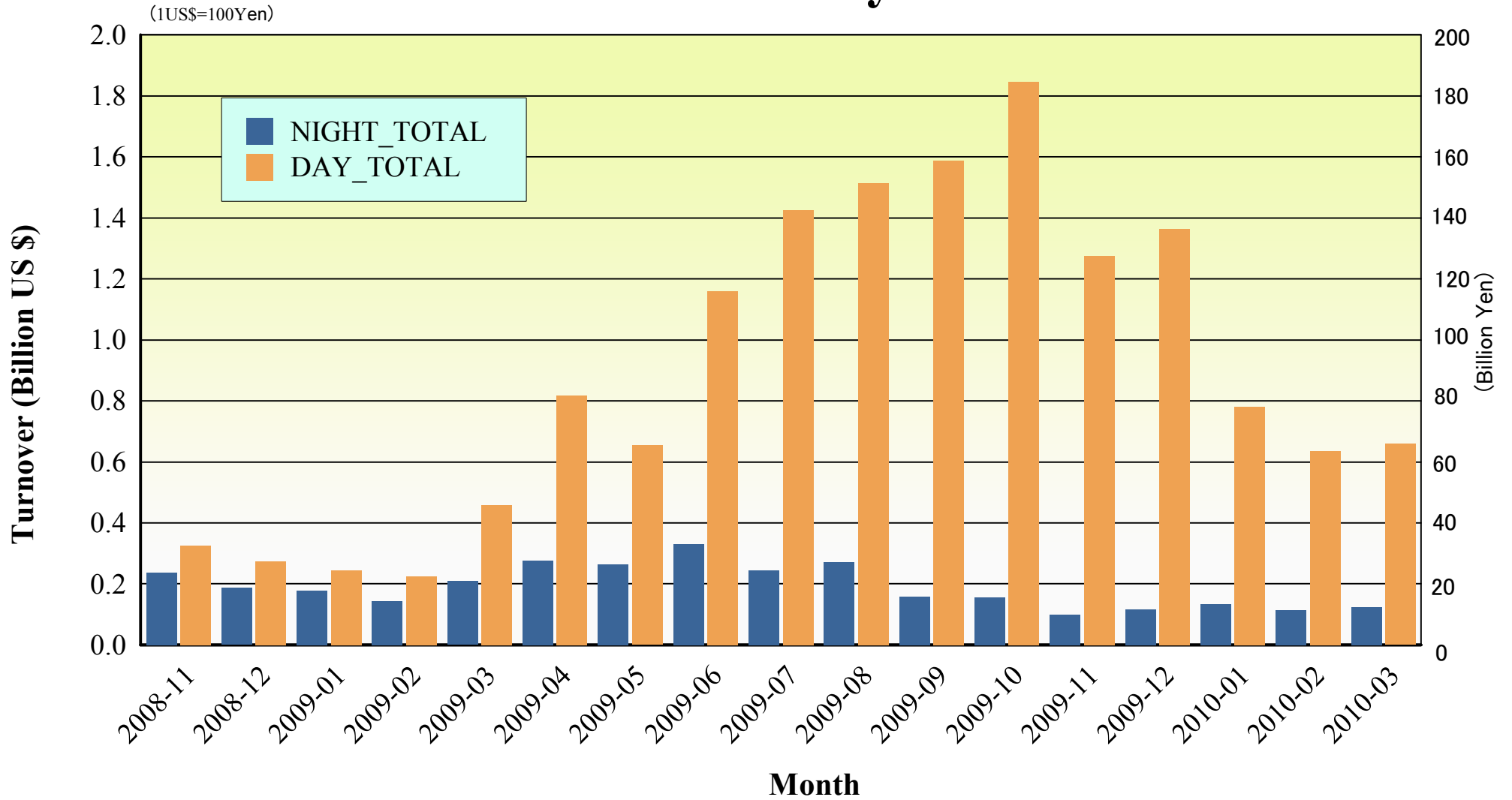
Daily Turnover on NIGHT Session



Average Daily Turnover by Month



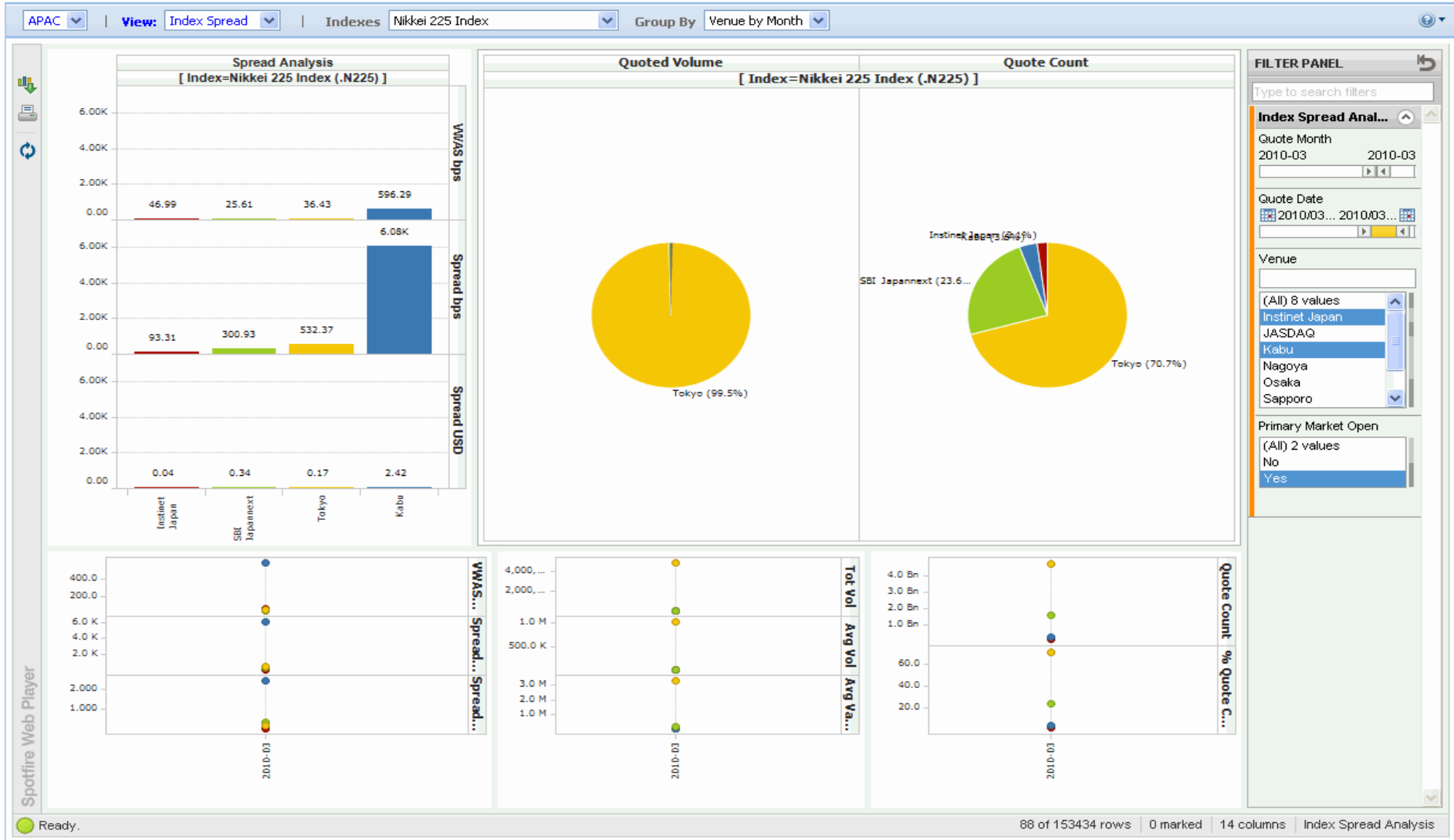
Total Turnover by Month



Nikkei 225 Spread Analysis via REUTERS EMSR (in Mar-2010)

EMSR Market Performance

Launch Application ▾

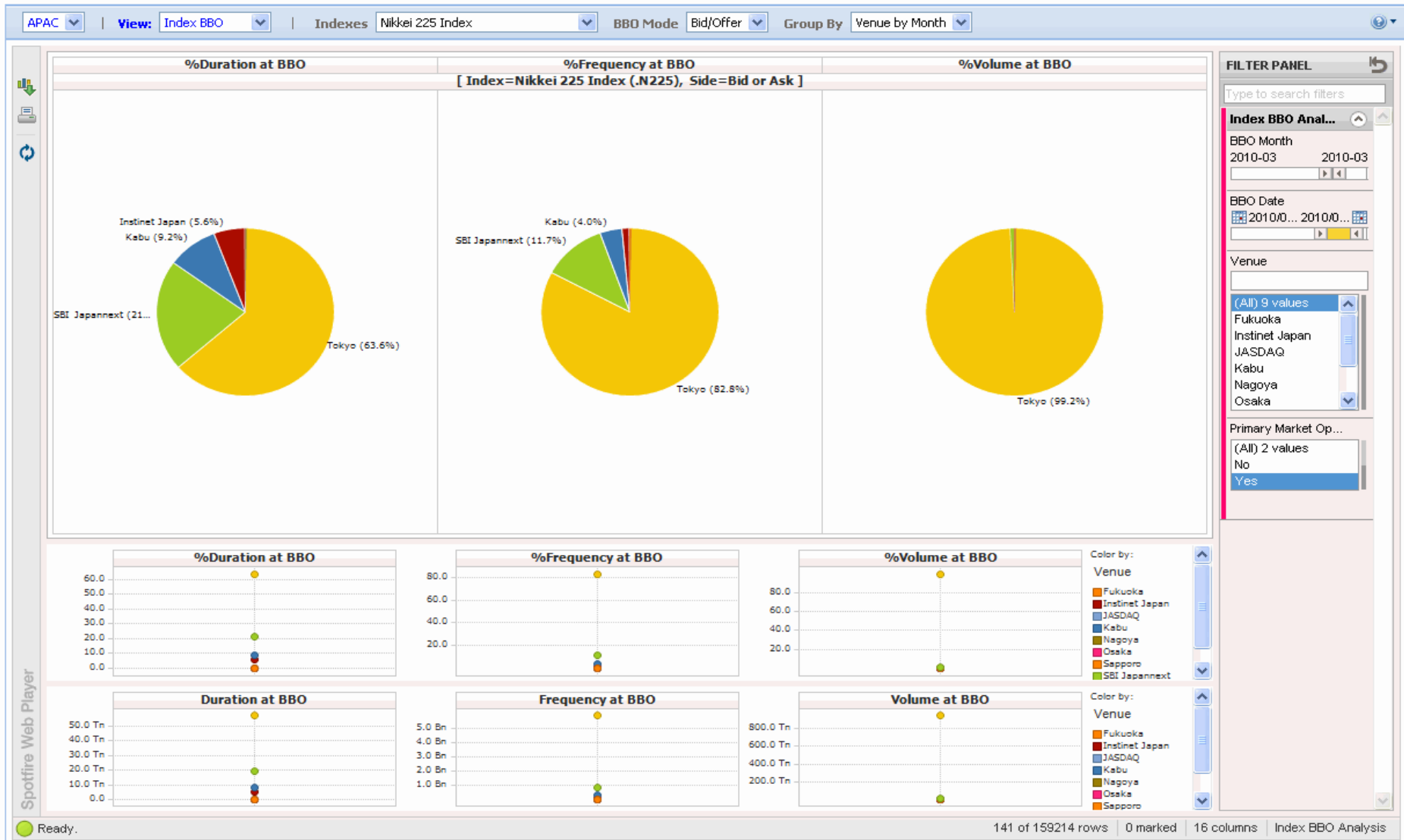


Nikkei 225 BBO Analysis via REUTERS EMSR (in Mar-2010)

EMSR Market Performance

Launch Application ▾

Welcome, EMSR Asia Demo | [Sign Out](#)



"Daytime Session" Statistics

Nikkei 225 (Mar-2010)

SELL

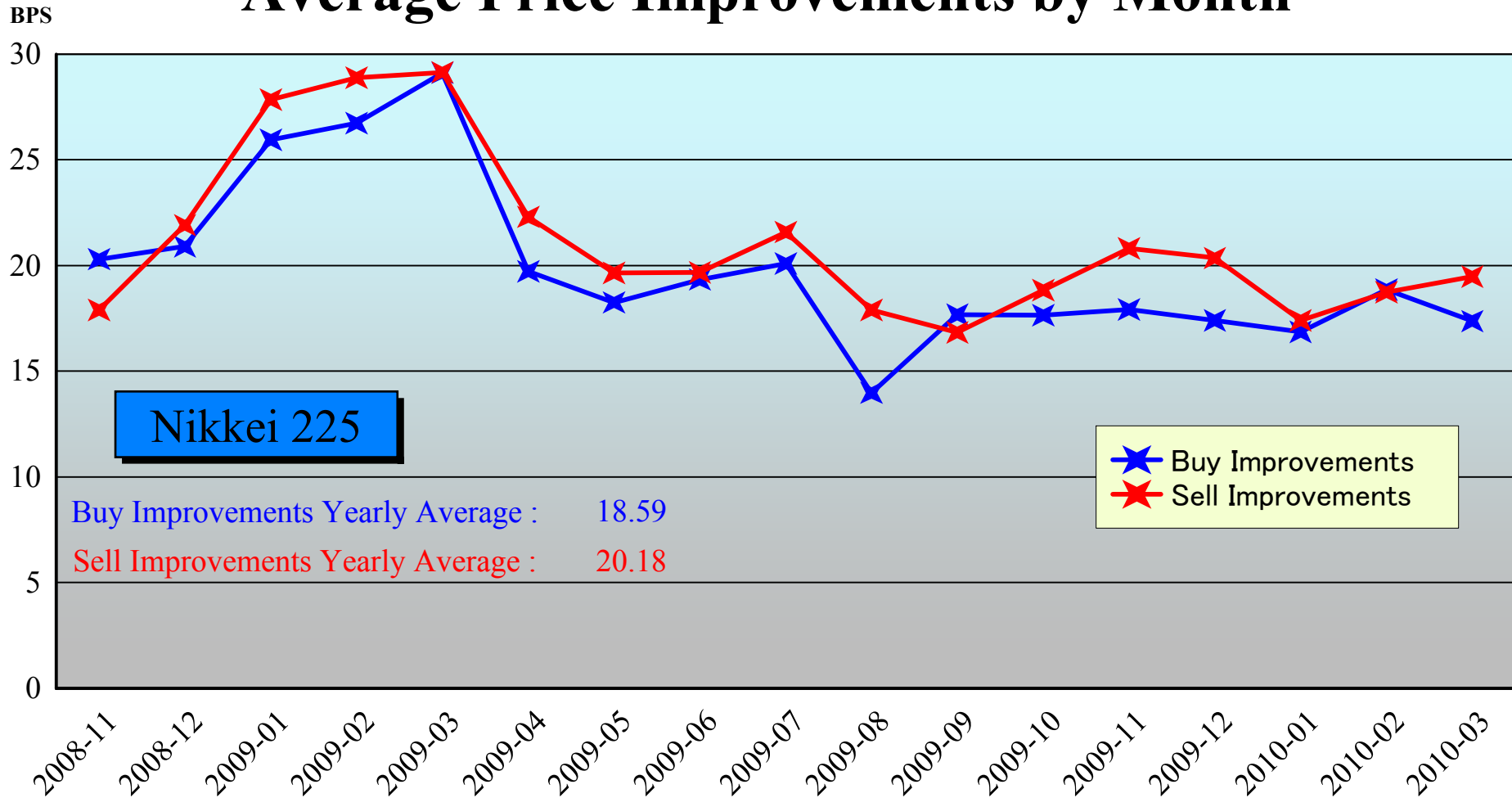
BUY

A. Worse Price Executions	787 (1.18%)	1,198 (1.80%)
B. Equal Price Executions	15,441 (23.22%)	21,870 (32.88%)
C. Better Price Executions	50,283 (75.60%)	43,443 (65.32%)
	<hr/>	
B + C	98.82%	98.20%
A'. Avg. Price Declines	-11.33BPS	-12.09BPS
C'. Avg. Price Improvements	19.48BPS	17.37BPS

Note1: Excluded the executions from before 9AM, lunch break, and after 3PM

Note2: Avg. Price Improvements are based on Japannext vs. Primary Exchange prices

Average Price Improvements by Month



Note1: Excluded the executions from before 9AM, lunch break, and after 3PM

Note2: Avg. Price Improvements are based on Japannext vs. Primary Exchange prices

Day/Night Monthly Turnover for Top 25 Names (Mar-2010)

(DAY Session)

	SYMBOL	DESCRIPTION	TEUNOVER (Million US\$ 1US\$=1Yen)
1	8411	MIZUHO FINANCIAL GROUP, INC.	20.71
2	7203	TOYOTA MOTOR CORP.	16.54
3	8306	MITSUBISHI UFJ FINANCIAL GROUP, INC.	13.56
4	9432	NIPPON TELEGRAPH & TELEPHONE CORP.	11.34
5	7267	HONDA MOTOR CO., LTD.	11.03
6	6501	HITACHI, LTD.	9.65
7	6758	SONY CORP.	9.52
8	6502	TOSHIBA CORP.	9.43
9	7013	IHI CORP.	9.11
10	9020	EAST JAPAN RAILWAY CO.	8.53
11	7751	CANON INC.	8.47
12	8332	THE BANK OF YOKOHAMA, LTD.	8.40
13	9531	TOKYO GAS CO., LTD.	6.91
14	8802	MITSUBISHI ESTATE CO., LTD.	6.55
15	1812	KAJIMA CORP.	6.18
16	8801	MITSUI FUDOSAN CO., LTD.	6.02
17	6701	NEC CORP.	5.92
18	6954	FANUC LTD.	5.75
19	6702	FUJITSU LTD.	5.65
20	9501	THE TOKYO ELECTRIC POWER CO., INC.	5.19
21	7201	NISSAN MOTOR CO., LTD.	4.96
22	9022	CENTRAL JAPAN RAILWAY CO., LTD.	4.94
23	2914	JAPAN TOBACCO INC.	4.65
24	1605	INPEX CORP.	4.58
25	4502	TAKEDA PHARMACEUTICAL CO., LTD.	4.44

(NIGHT Session)

highlight : "Common" names for Day & NightTime

	SYMBOL	DESCRIPTION	TURNOVER (Million US\$ 1US\$=1Yen)
1	8411	MIZUHO FINANCIAL GROUP, INC.	12.07
2	7203	TOYOTA MOTOR CORP.	7.27
3	8306	MITSUBISHI UFJ FINANCIAL GROUP, INC.	6.31
4	8316	SUMITOMO MITSUI FINANCIAL GROUP, INC.	5.16
5	7974	NINTENDO CO., LTD.	4.42
6	6502	TOSHIBA CORP.	3.47
7	3858	UBIQUITOUS CORP.	2.83
8	6758	SONY CORP.	2.39
9	8058	MITSUBISHI CORP.	2.28
10	7267	HONDA MOTOR CO., LTD.	2.24
11	4502	TAKEDA PHARMACEUTICAL CO., LTD.	1.92
12	6501	HITACHI, LTD.	1.65
13	4523	EISAI CO., LTD.	1.57
14	8913	ZECS CO., LTD.	1.56
15	9107	KAWASAKI KISEN KAISHA, LTD.	1.20
16	9437	NTT DOCOMO, INC.	1.14
17	8604	NOMURA HOLDINGS, INC.	1.10
18	6752	PANASONIC CORP.	1.07
19	7201	NISSAN MOTOR CO., LTD.	1.06
20	9022	CENTRAL JAPAN RAILWAY CO., LTD.	1.02
21	4568	DAIICHI SANKYO CO., LTD.	1.01
22	3846	HI CORP.	0.96
23	9202	ALL NIPPON AIRWAYS CO., LTD.	0.94
24	8031	MITSUI & CO., LTD.	0.86
25	2428	WELLNET CORP.	0.83

Improvements of Monthly Turnover for Top 25 Names (Mar-2010)

(Daytime Session)

	RIC	NAME	Sell Executions							Improve Avg. BPS	Buy Executions							Improve Avg. BPS
			Worse(A)		Equal(B)		Better(C)		(B) + (C)		Worse(A)		Equal(B)		Better(C)		(B) + (C)	
1	8411.T	MIZUHO	12	0.28%	225	5.31%	4,003	94.41%	99.72%	34.55	47	1.11%	714	16.84%	3,479	82.05%	98.89%	25.94
2	7203.T	TOYOTA	9	1.09%	353	42.58%	467	56.33%	98.91%	10.71	10	1.21%	228	27.50%	591	71.29%	98.79%	11.80
3	8306.T	MUFG	3	0.19%	464	29.74%	1,093	70.06%	99.81%	14.97	11	0.71%	371	23.78%	1,178	75.51%	99.29%	14.55
4	9432.T	NTT	12	1.69%	191	26.86%	508	71.45%	98.31%	10.78	9	1.27%	293	41.21%	409	57.52%	98.73%	9.70
5	7267.T	HONDA	13	1.76%	206	27.84%	521	70.41%	98.24%	12.18	11	1.49%	319	43.11%	410	55.41%	98.51%	13.20
6	6501.T	HITACHI	5	0.47%	177	16.59%	885	82.94%	99.53%	21.89	14	1.31%	240	22.49%	813	76.19%	98.69%	18.41
7	6758.T	SONY	1	0.12%	370	42.63%	497	57.26%	99.88%	11.42	7	0.81%	259	29.84%	602	69.35%	99.19%	12.26
8	6502.T	TOSHIBA	3	0.49%	60	9.74%	553	89.77%	99.51%	14.65	6	0.97%	144	23.38%	466	75.65%	99.03%	12.38
9	7013.T	IHI	0	0.00%	90	17.79%	416	82.21%	100.00%	43.84	22	4.35%	80	15.81%	404	79.84%	95.65%	38.91
10	9020.T	JR EAST	1	0.25%	238	58.48%	168	41.28%	99.75%	12.79	7	1.72%	77	18.92%	323	79.36%	98.28%	14.24
11	7751.T	CANON	6	1.47%	145	35.54%	257	62.99%	98.53%	10.64	5	1.23%	152	37.25%	251	61.52%	98.77%	9.86
12	8332.T	YKHA-BK	5	0.98%	91	17.84%	414	81.18%	99.02%	15.04	3	0.59%	66	12.94%	441	86.47%	99.41%	13.58
13	9531.T	TKO-GAS	1	0.15%	75	11.45%	579	88.40%	99.85%	18.05	6	0.92%	138	21.07%	511	78.02%	99.08%	11.85
14	8802.T	MTB-EST	15	4.69%	151	47.19%	154	48.13%	95.31%	7.22	12	3.75%	53	16.56%	255	79.69%	96.25%	6.92
15	1812.T	KAJIMA	13	2.08%	152	24.28%	461	73.64%	97.92%	38.15	7	1.12%	170	27.16%	449	71.73%	98.88%	29.68
16	8801.T	MTI-FU	14	4.50%	127	40.84%	170	54.66%	95.50%	6.80	24	7.72%	58	18.65%	229	73.63%	92.28%	6.10
17	6701.T	NEC	1	0.71%	49	34.75%	91	64.54%	99.29%	28.44	3	2.13%	38	26.95%	100	70.92%	97.87%	29.32
18	6954.T	FANUC	13	4.42%	45	15.31%	236	80.27%	95.58%	10.93	14	4.76%	158	53.74%	122	41.50%	95.24%	9.23
19	6702.T	FUJITSU	7	1.64%	136	31.92%	283	66.43%	98.36%	16.64	23	5.40%	194	45.54%	209	49.06%	94.60%	15.59
20	9501.T	TEPCO	20	3.53%	197	34.81%	349	61.66%	96.47%	3.98	45	7.95%	136	24.03%	385	68.02%	92.05%	3.84
21	7201.T	NISSAN	2	0.29%	157	22.43%	541	77.29%	99.71%	13.29	18	2.57%	373	53.29%	309	44.14%	97.43%	9.08
22	9022.T	JR CENT	8	2.36%	64	18.88%	267	78.76%	97.64%	14.09	0	0.00%	240	70.80%	99	29.20%	100.00%	14.04
23	2914.T	JT	1	0.34%	41	13.85%	254	85.81%	99.66%	14.27	9	3.04%	154	52.03%	133	44.93%	96.96%	8.62
24	1605.T	INPEX	6	1.07%	53	9.41%	504	89.52%	98.93%	14.28	5	0.89%	399	70.87%	159	28.24%	99.11%	10.52
25	4502.T	TAKEDAP	6	1.80%	38	11.38%	290	86.83%	98.20%	11.00	5	1.50%	200	59.88%	129	38.62%	98.50%	6.97

Note1: Excluded the executions from before 9AM, lunch break, and after 3PM

Note2: Avg. Price Improvements are based on Japannext vs. Primary Exchange prices