

Monthly Statistics

May-2010

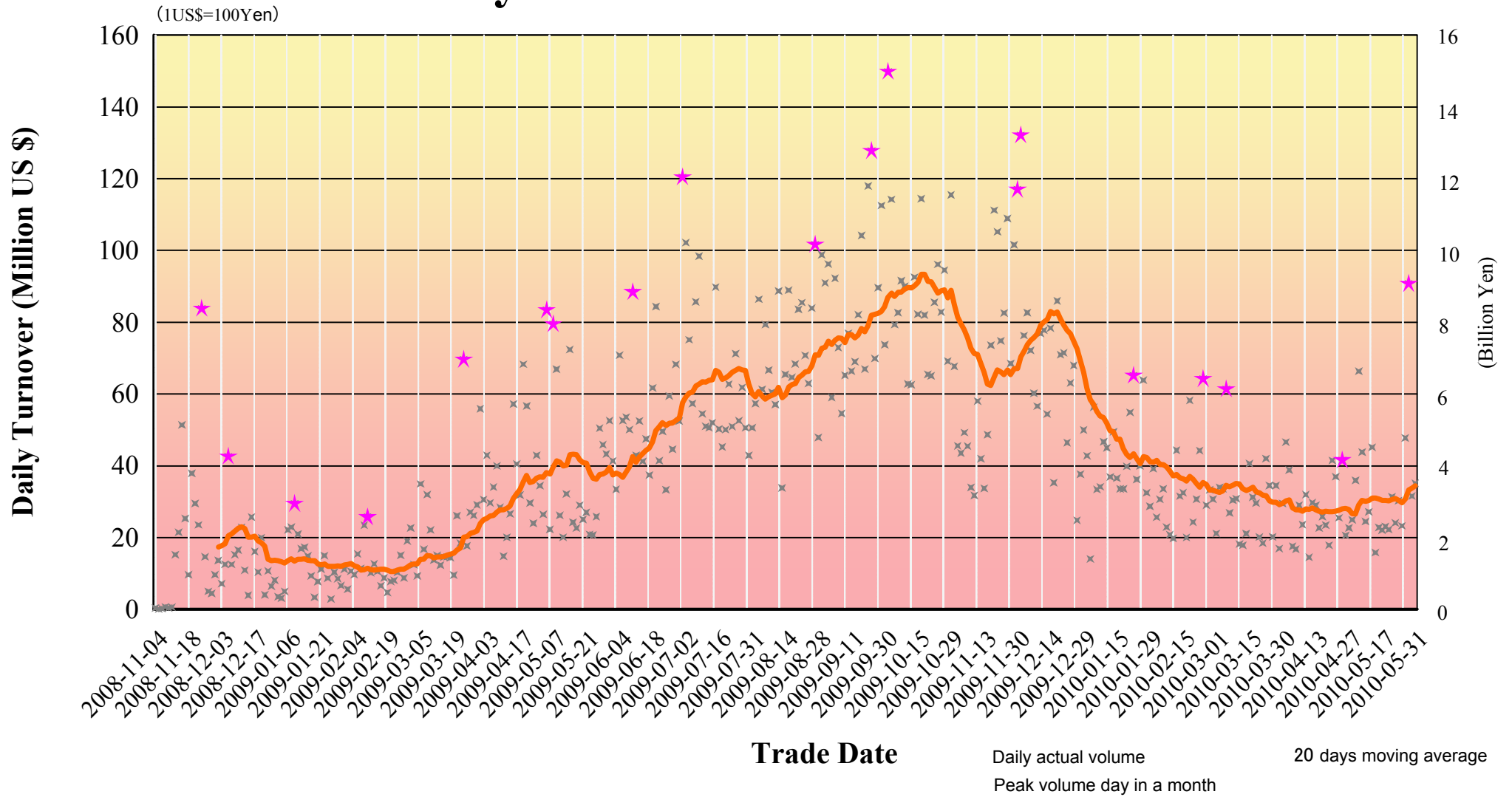
Japannext PTS

SBI Japannext Co., Ltd

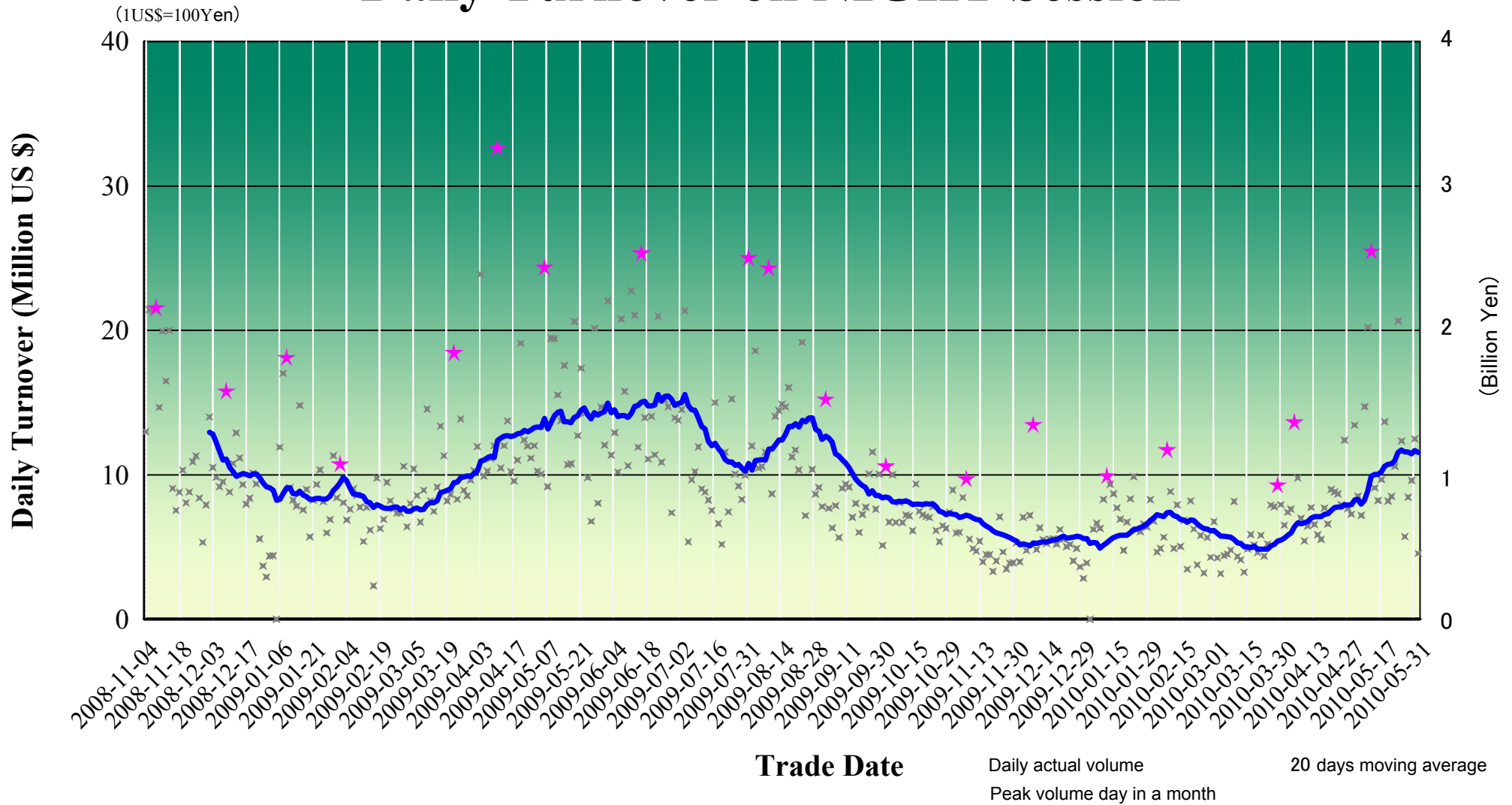
Disclaimer

Information provided is for reference purposes and does not constitute financial product advice nor is construed as an offer to sell or the solicitation of an offer to buy any security. The ownership and the intellectual property rights of this information solely and exclusively belong to SBI Japannext Co.,Ltd. (“SBIJ”). Accordingly users are permitted to get an access and use of the Information for their own personal, non-commercial and internal use only. Although SBIJ has made every effort to ensure the accuracy of the information as at the date of publication, SBIJ does not give any warranty or representation as to the accuracy, reliability or completeness of the information. To the extent permitted by law, SBIJ and its employees, officers and contractors shall not be liable for any loss or damage arising in any way (including by way of negligence) from or in connection with any information provided or omitted or from any one acting or refraining to act in reliance on this information.

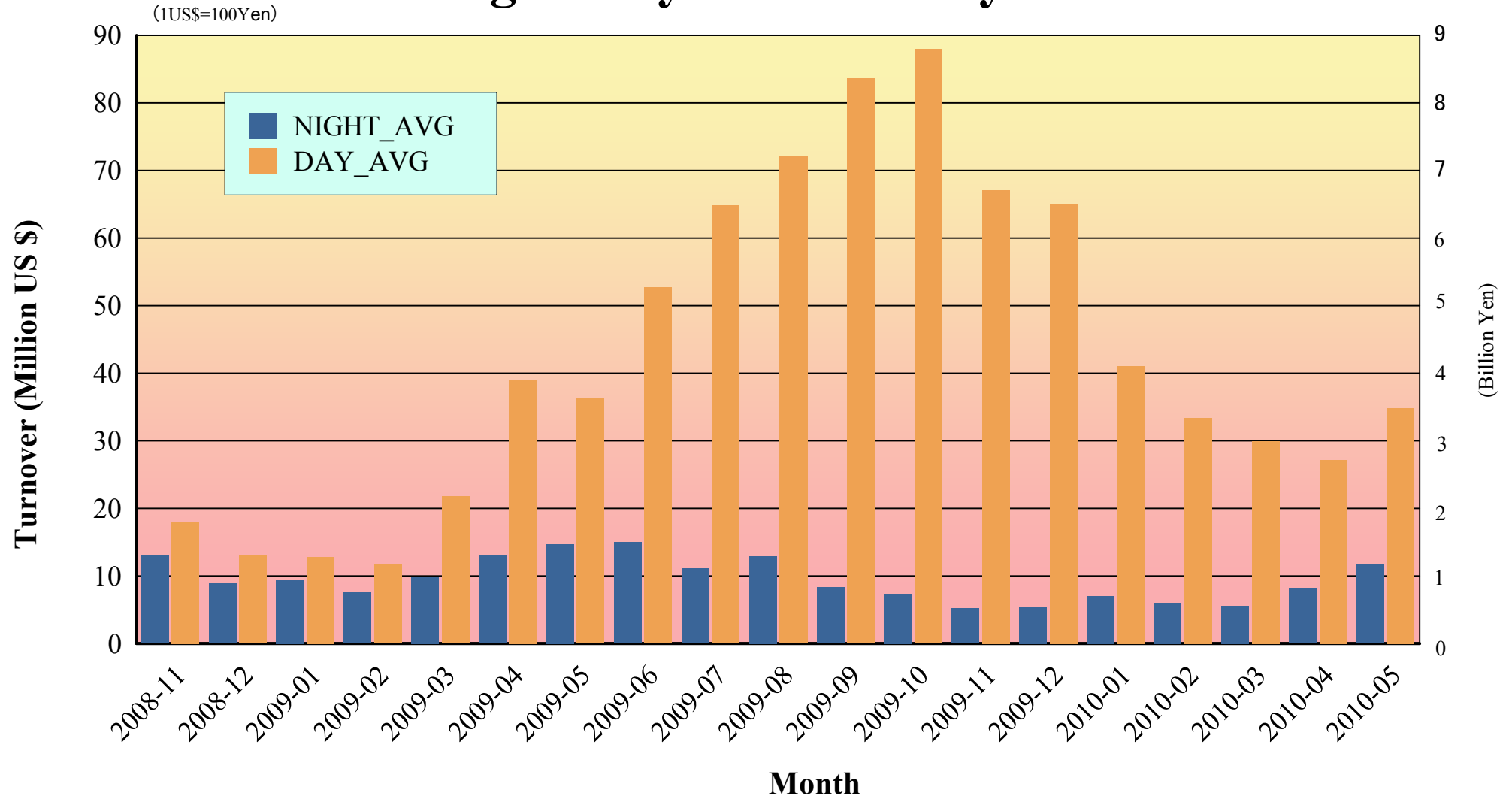
Daily Turnover on DAY Session



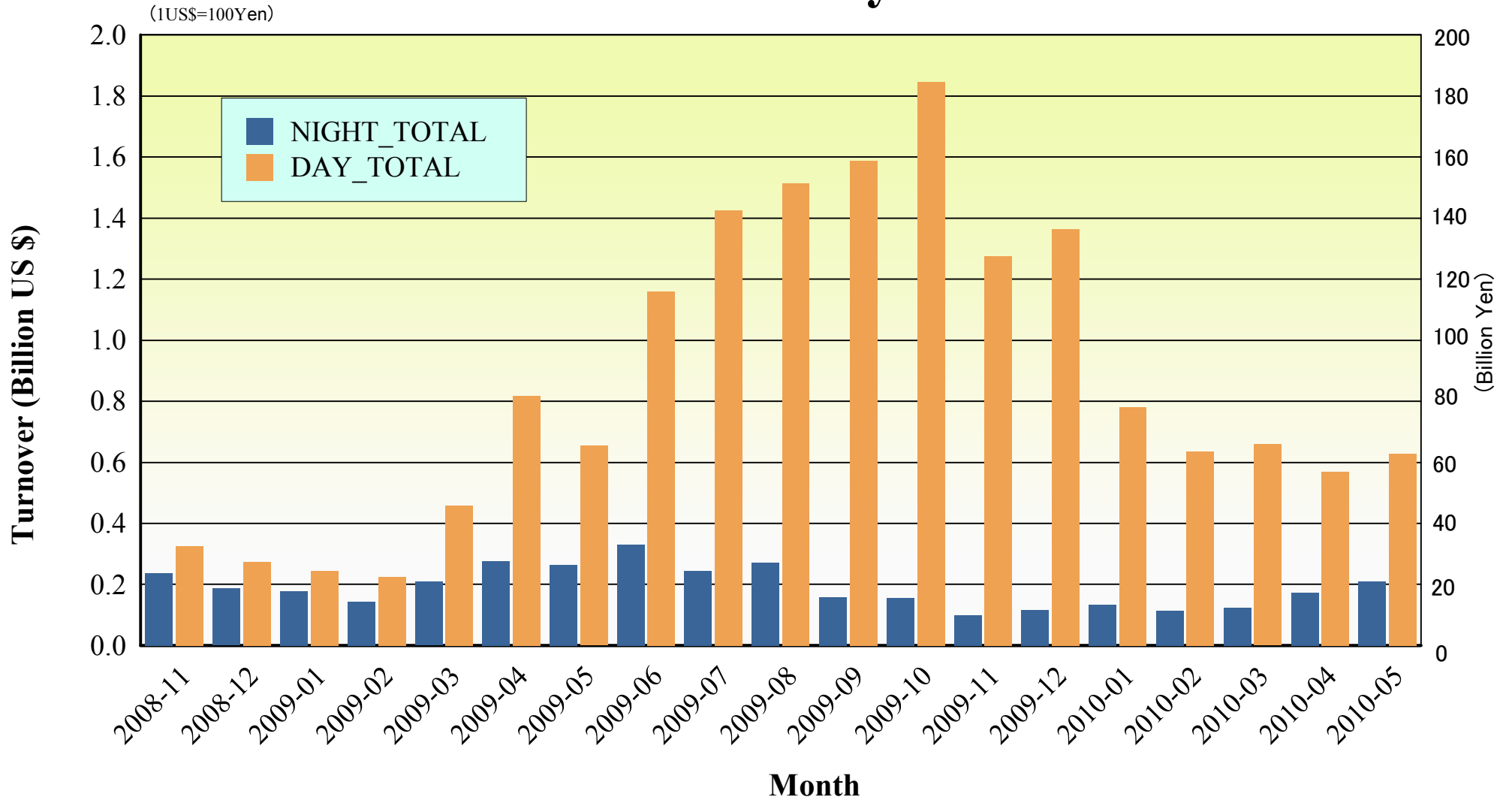
Daily Turnover on NIGHT Session



Average Daily Turnover by Month



Total Turnover by Month



"Daytime Session" Statistics

Nikkei 225 (May-2010)

SELL

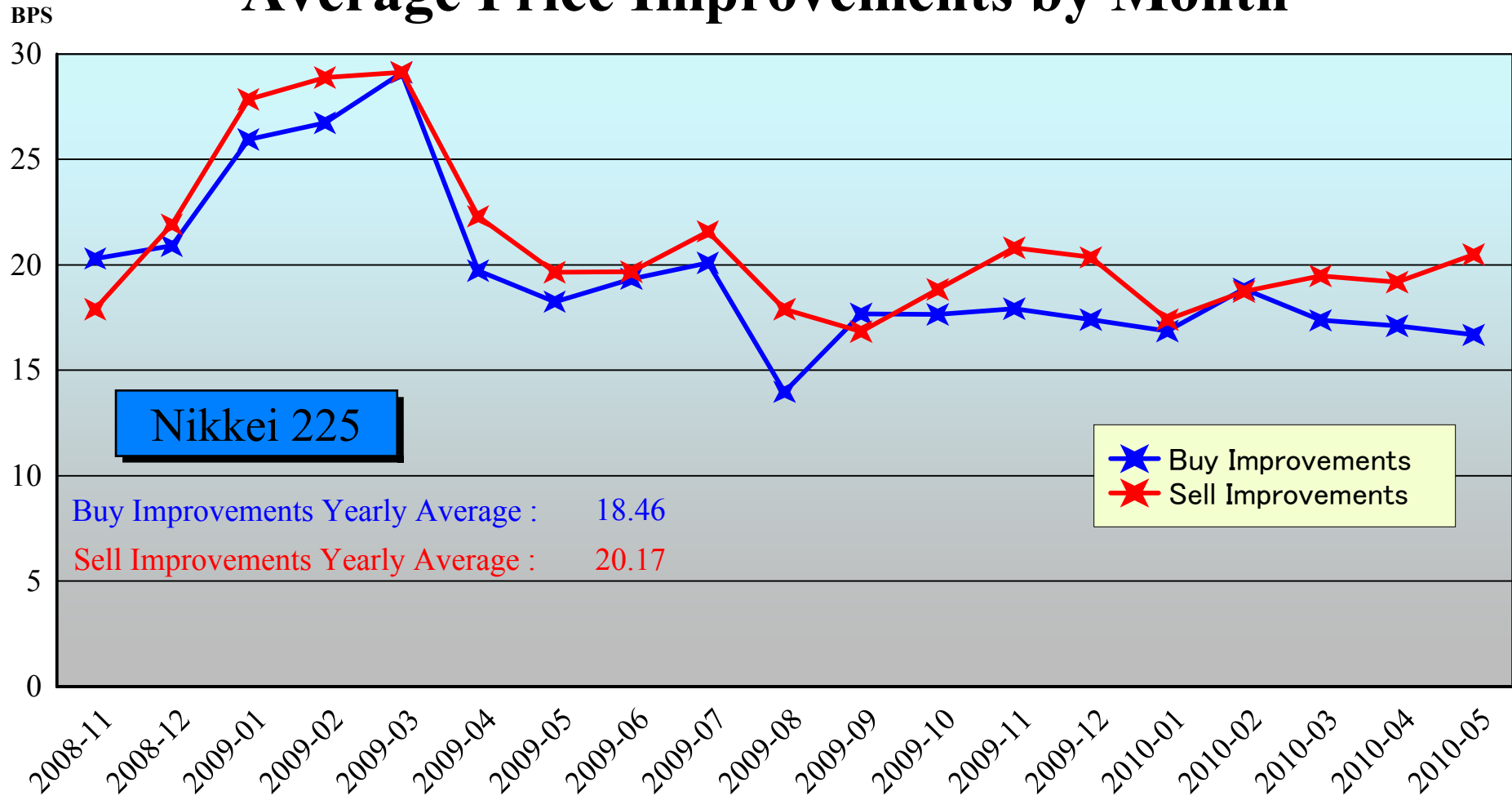
BUY

A. Worse Price Executions	767 (1.14%)	1,363 (2.02%)
B. Equal Price Executions	15,813 (23.46%)	16,623 (24.66%)
C. Better Price Executions	50,832 (75.40%)	49,426 (73.32%)
	<hr/>	
B + C	98.86%	97.98%
A'. Avg. Price Declines	-11.71BPS	-13.03BPS
C'. Avg. Price Improvements	20.49BPS	16.67BPS

Note1: Excluded the executions from before 9AM, lunch break, and after 3PM

Note2: Avg. Price Improvements are based on Japannext vs. Primary Exchange prices

Average Price Improvements by Month



Note1: Excluded the executions from before 9AM, lunch break, and after 3PM

Note2: Avg. Price Improvements are based on Japannext vs. Primary Exchange prices

Day/Night Monthly Turnover for Top 25 Names (May-2010)

(DAY Session)

	SYMBOL	DESCRIPTION	TURNOVER (Million US\$ 1US\$=1Yen)
1	7203	TOYOTA MOTOR CORP.	21.68
2	8411	MIZUHO FINANCIAL GROUP, INC.	18.46
3	7751	CANON INC.	16.29
4	8306	mitsubishi UFJ FINANCIAL GROUP, INC.	10.49
5	9101	NIPPON YUSEN K.K.	8.39
6	9432	NIPPON TELEGRAPH & TELEPHONE CORP.	7.77
7	9531	TOKYO GAS CO., LTD.	7.06
8	9437	NTT DOCOMO, INC.	6.21
9	7011	mitsubishi HEAVY IND., LTD.	6.17
10	9107	KAWASAKI KISEN KAISHA, LTD.	6.14
11	6501	HITACHI, LTD.	6.10
12	6762	TDK CORP.	5.65
13	6503	mitsubishi ELECTRIC CORP.	5.61
14	9020	EAST JAPAN RAILWAY CO.	5.37
15	8604	NOMURA HOLDINGS, INC.	5.28
16	9202	ALL NIPPON AIRWAYS CO., LTD.	5.18
17	9532	OSAKA GAS CO., LTD.	4.88
18	4502	TAKEDA PHARMACEUTICAL CO., LTD.	4.83
19	9983	FAST RETAILING CO., LTD.	4.66
20	5405	SUMITOMO METAL IND., LTD.	4.62
21	7267	HONDA MOTOR CO., LTD.	4.28
22	6954	FANUC LTD.	4.26
23	9735	SECOM CO., LTD.	4.18
24	6502	TOSHIBA CORP.	3.99
25	5202	NIPPON SHEET GLASS CO., LTD.	3.91

(NIGHT Session)

highlight : "Common" names for Day & NightTime

	SYMBOL	DESCRIPTION	TURNOVER (Million US\$ 1US\$=1Yen)
1	8306	mitsubishi UFJ FINANCIAL GROUP, INC.	13.11
2	8316	SUMITOMO MITSUI FINANCIAL GROUP, INC.	11.43
3	8411	MIZUHO FINANCIAL GROUP, INC.	10.06
4	7203	TOYOTA MOTOR CORP.	8.35
5	7974	NINTENDO CO., LTD.	7.69
6	6758	SONY CORP.	5.81
7	6501	HITACHI, LTD.	5.57
8	7267	HONDA MOTOR CO., LTD.	4.18
9	1321	NIKKEI 225 EXCHANGE TRADED FUND	3.97
10	8058	mitsubishi CORP.	3.81
11	3858	UBIQUITOUS CORP.	3.80
12	8031	MITSUI & CO., LTD.	3.65
13	8604	NOMURA HOLDINGS, INC.	3.36
14	6502	TOSHIBA CORP.	3.33
15	2342	TRANS GENIC INC.	3.27
16	7751	CANON INC.	2.40
17	8750	THE DAI-ICHI LIFE INSURANCE CO., LTD.	2.39
18	2432	DENA CO., LTD.	2.32
19	6301	KOMATSU LTD.	2.10
20	9984	SOFTBANK CORP.	1.88
21	7201	NISSAN MOTOR CO., LTD.	1.88
22	6752	PANASONIC CORP.	1.77
23	6665	ELPIDA MEMORY, INC.	1.52
24	9104	MITSUI O.S.K.LINES, LTD.	1.49
25	4502	TAKEDA PHARMACEUTICAL CO., LTD.	1.47

Improvements of Monthly Turnover for Top 25 Names (May-2010)

(Daytime Session)

	RIC	NAME	Sell Executions							Improve Avg. BPS	Buy Executions							Improve Avg. BPS
			Worse(A)		Equal(B)		Better(C)		(B) + (C)		Worse(A)		Equal(B)		Better(C)		(B) + (C)	
1	7203.T	TOYOTA	27	2.11%	357	27.89%	896	70.00%	97.89%	12.25	12	0.94%	438	34.22%	830	64.84%	99.06%	10.33
2	8411.T	MIZUHO	65	1.78%	271	7.41%	3,321	90.81%	98.22%	35.54	90	2.46%	301	8.23%	3,266	89.31%	97.54%	32.40
3	7751.T	CANON	8	0.84%	396	41.64%	547	57.52%	99.16%	11.67	18	1.89%	343	36.07%	590	62.04%	98.11%	11.53
4	8306.T	MUFG	9	0.46%	363	18.65%	1,574	80.88%	99.54%	14.40	3	0.15%	395	20.30%	1,548	79.55%	99.85%	13.61
5	9101.T	NYKLINE	3	0.45%	248	37.13%	417	62.43%	99.55%	19.35	3	0.45%	58	8.68%	607	90.87%	99.55%	21.07
6	9432.T	NTT	13	2.05%	105	16.54%	517	81.42%	97.95%	11.53	22	3.46%	259	40.79%	354	55.75%	96.54%	8.41
7	9531.T	TKO-GAS	3	0.48%	57	9.09%	567	90.43%	99.52%	17.39	1	0.16%	87	13.88%	539	85.96%	99.84%	11.09
8	9437.T	DOCOMO	14	1.96%	240	33.52%	462	64.53%	98.04%	6.71	19	2.65%	293	40.92%	404	56.42%	97.35%	6.18
9	7011.T	MHI	1	0.25%	53	13.18%	348	86.57%	99.75%	23.39	1	0.25%	59	14.68%	342	85.07%	99.75%	11.58
10	9107.T	K-LINE	2	0.45%	37	8.33%	405	91.22%	99.55%	19.18	2	0.45%	73	16.44%	369	83.11%	99.55%	12.92
11	6501.T	HITACHI	5	0.75%	142	21.26%	521	77.99%	99.25%	17.26	6	0.90%	77	11.53%	585	87.57%	99.10%	15.18
12	6762.T	TDK	0	0.00%	95	38.78%	150	61.22%	100.00%	14.55	2	0.82%	42	17.14%	201	82.04%	99.18%	11.86
13	6503.T	MELCO	0	0.00%	289	62.69%	172	37.31%	100.00%	12.77	9	1.95%	102	22.13%	350	75.92%	98.05%	12.30
14	9020.T	JR EAST	3	0.60%	64	12.75%	435	86.65%	99.40%	13.13	4	0.80%	105	20.92%	393	78.29%	99.20%	7.43
15	8604.T	NOMRAHD	16	1.45%	142	12.87%	945	85.68%	98.55%	13.50	15	1.36%	339	30.73%	749	67.91%	98.64%	9.35
16	9202.T	ANA	1	0.27%	45	12.13%	325	87.60%	99.73%	21.54	4	1.08%	18	4.85%	349	94.07%	98.92%	19.11
17	9532.T	OSK-GAS	2	0.41%	49	9.96%	441	89.63%	99.59%	23.39	0	0.00%	103	20.93%	389	79.07%	100.00%	13.15
18	4502.T	TAKEDAP	2	0.45%	86	19.50%	353	80.05%	99.55%	11.26	4	0.91%	248	56.24%	189	42.86%	99.09%	10.09
19	9983.T	FASTRET	8	2.68%	119	39.80%	172	57.53%	97.32%	8.69	5	1.67%	101	33.78%	193	64.55%	98.33%	8.61
20	5405.T	SMI-MTI	13	2.33%	122	21.90%	422	75.76%	97.67%	26.84	4	0.72%	107	19.21%	446	80.07%	99.28%	28.85
21	7267.T	HONDA	12	4.12%	69	23.71%	210	72.16%	95.88%	11.53	9	3.09%	111	38.14%	171	58.76%	96.91%	8.64
22	6954.T	FANUC	0	0.00%	75	36.23%	132	63.77%	100.00%	10.35	2	0.97%	77	37.20%	128	61.84%	99.03%	8.69
23	9735.T	SECOM	0	0.00%	43	28.10%	110	71.90%	100.00%	12.54	0	0.00%	81	52.94%	72	47.06%	100.00%	12.01
24	6502.T	TOSHIBA	1	0.36%	35	12.73%	239	86.91%	99.64%	17.74	4	1.45%	105	38.18%	166	60.36%	98.55%	11.84
25	5202.T	NP-SGLS	2	0.45%	117	26.23%	327	73.32%	99.55%	23.80	4	0.90%	35	7.85%	407	91.26%	99.10%	27.00

Note1: Excluded the executions from before 9AM, lunch break, and after 3PM

Note2: Avg. Price Improvements are based on Japannext vs. Primary Exchange prices