

Monthly Statistics

Jul-2010

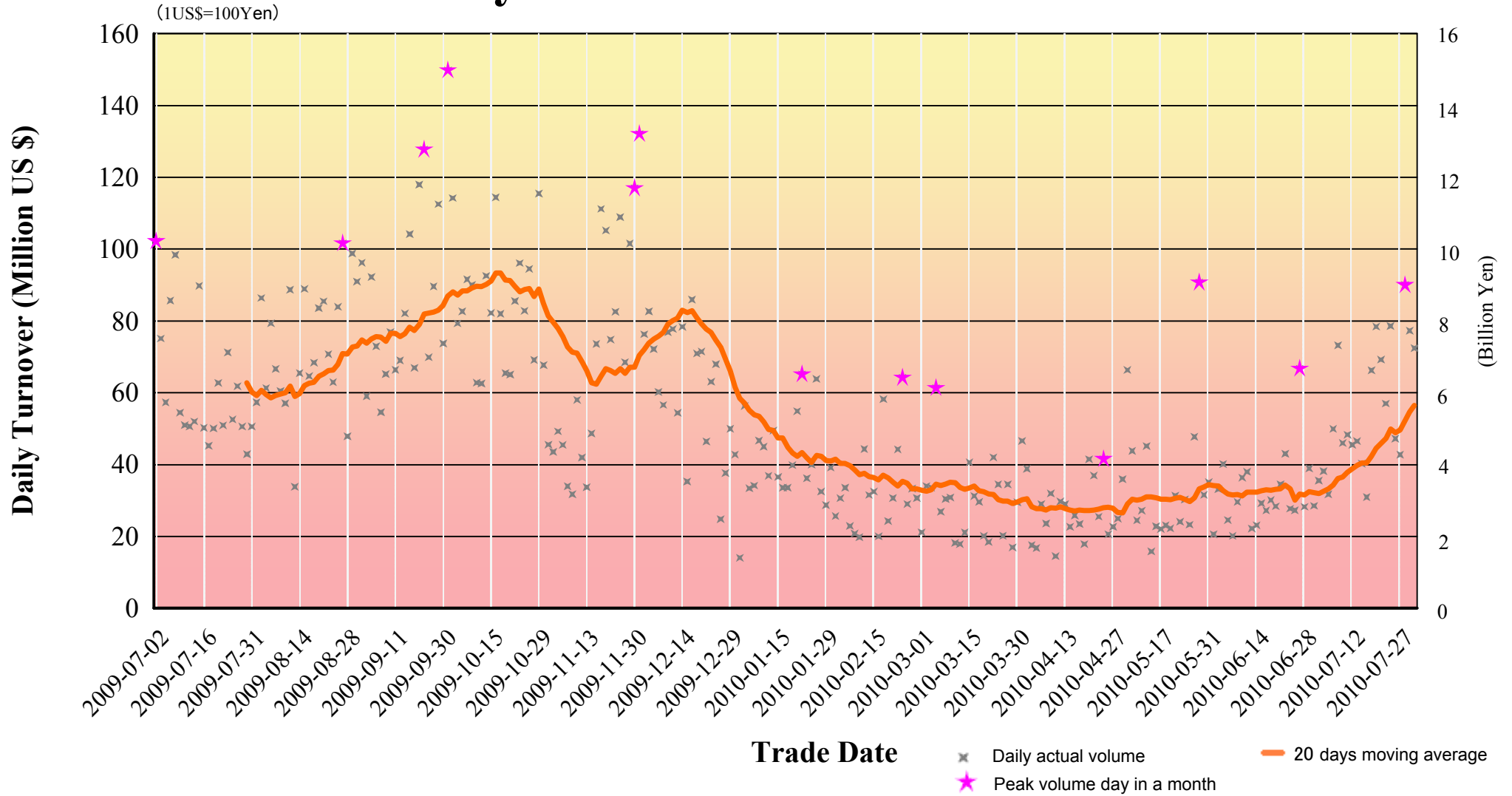
Japannext PTS

SBI Japannext Co., Ltd

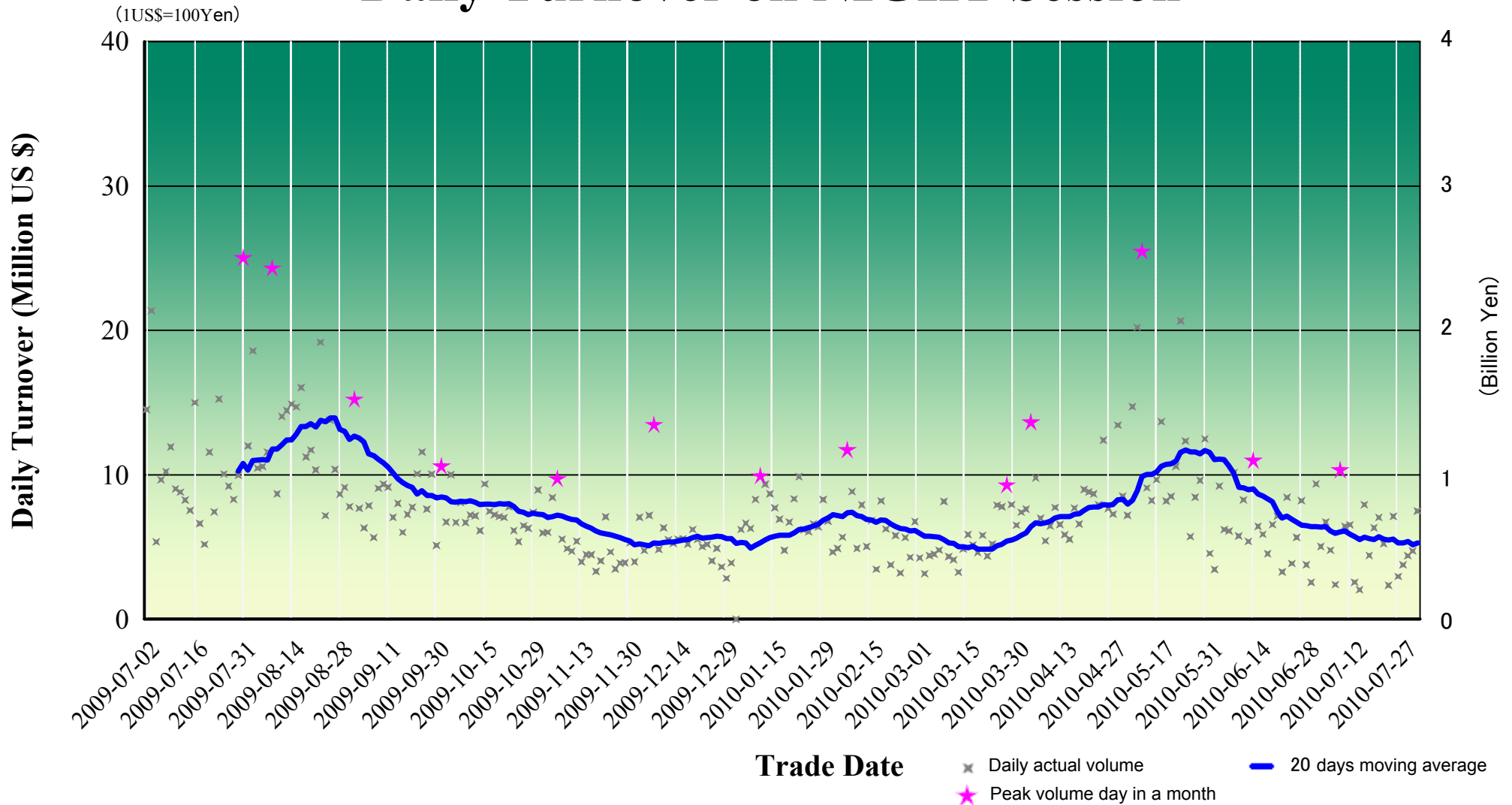
Disclaimer

Information provided is for reference purposes and does not constitute financial product advice nor is construed as an offer to sell or the solicitation of an offer to buy any security. The ownership and the intellectual property rights of this information solely and exclusively belong to SBI Japannext Co.,Ltd. (“SBIJ”). Accordingly users are permitted to get an access and use of the Information for their own personal, non-commercial and internal use only. Although SBIJ has made every effort to ensure the accuracy of the information as at the date of publication, SBIJ does not give any warranty or representation as to the accuracy, reliability or completeness of the information. To the extent permitted by law, SBIJ and its employees, officers and contractors shall not be liable for any loss or damage arising in any way (including by way of negligence) from or in connection with any information provided or omitted or from any one acting or refraining to act in reliance on this information.

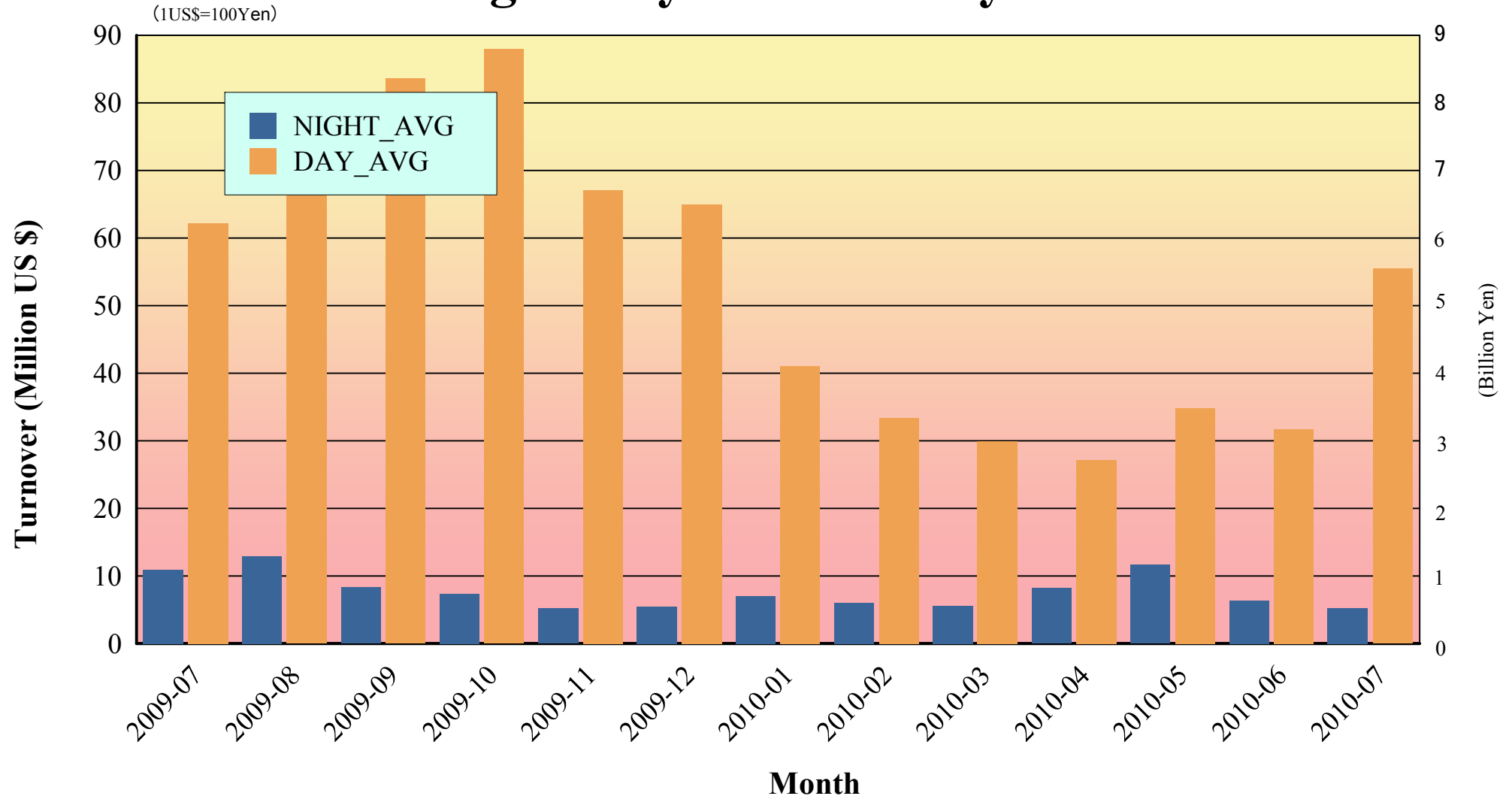
Daily Turnover on DAY Session



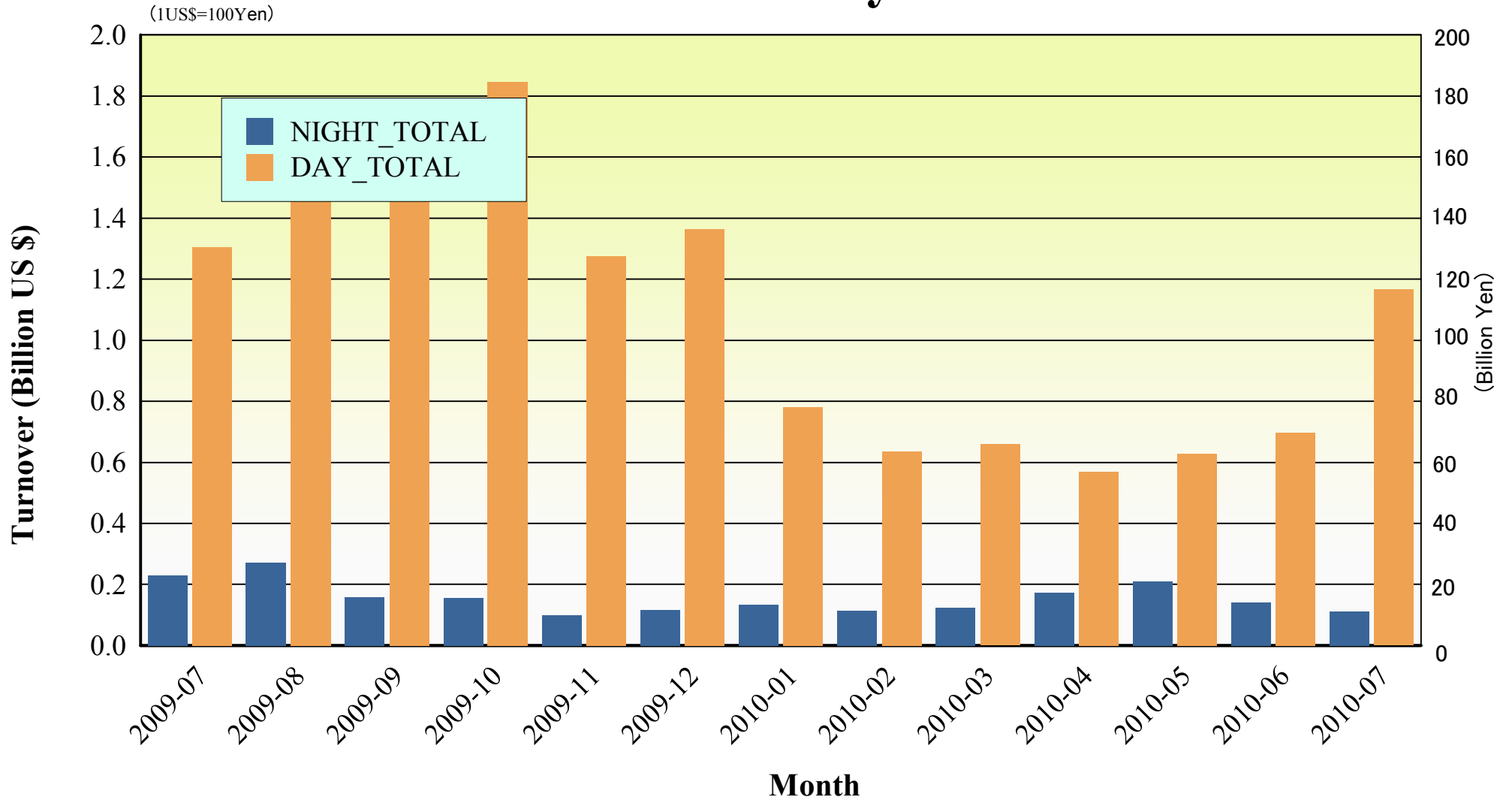
Daily Turnover on NIGHT Session



Average Daily Turnover by Month

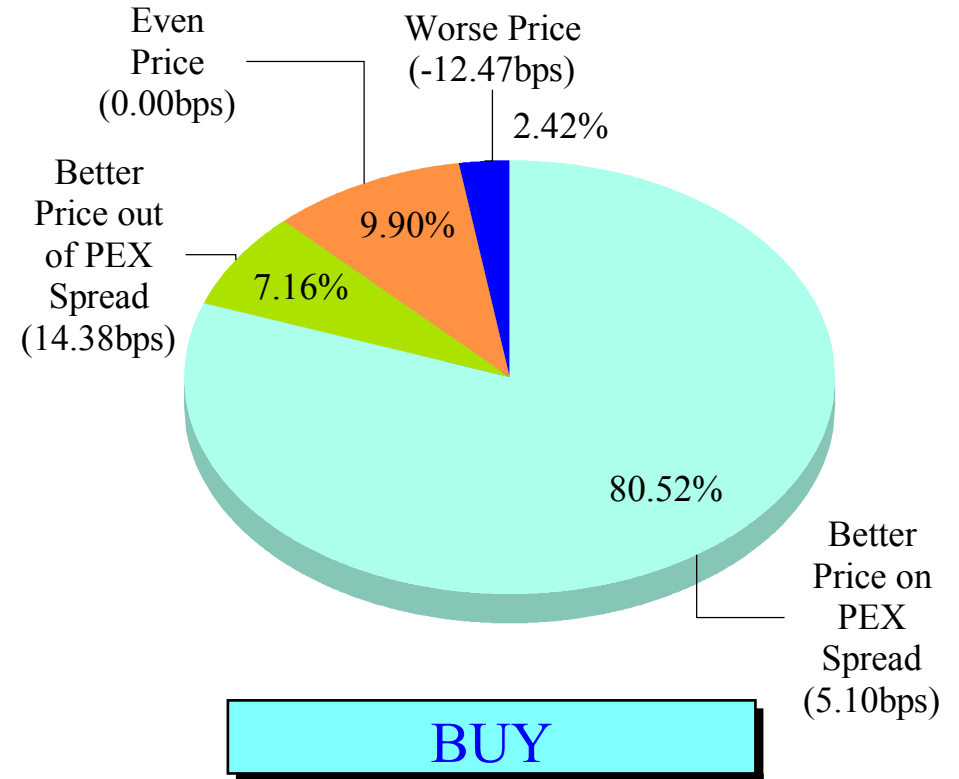
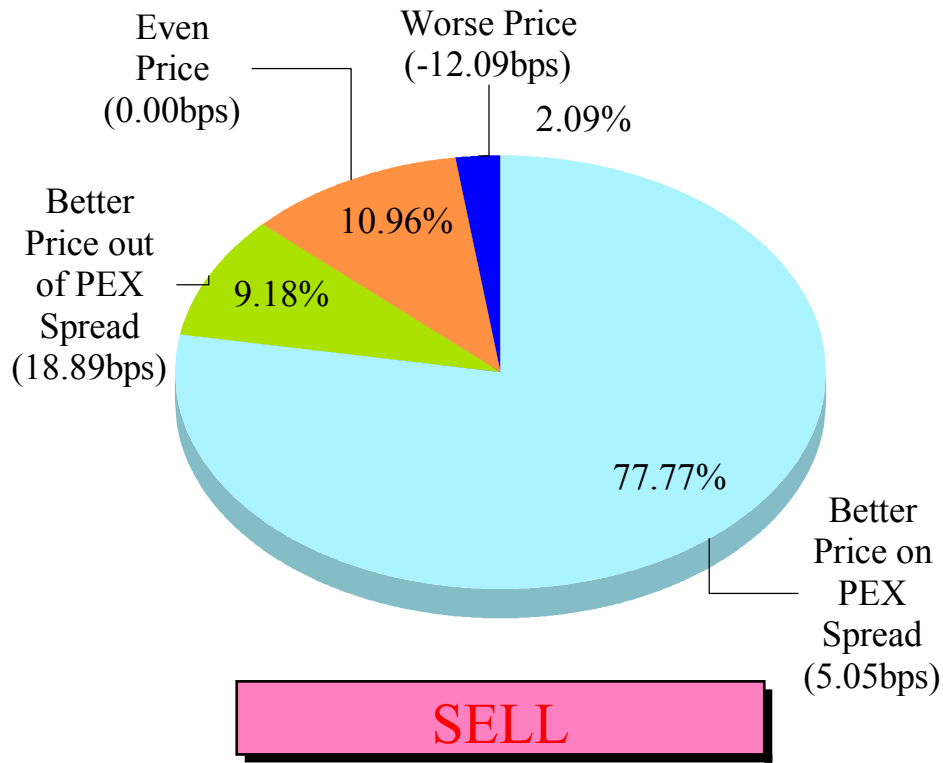


Total Turnover by Month



"Daytime Session" Improvements

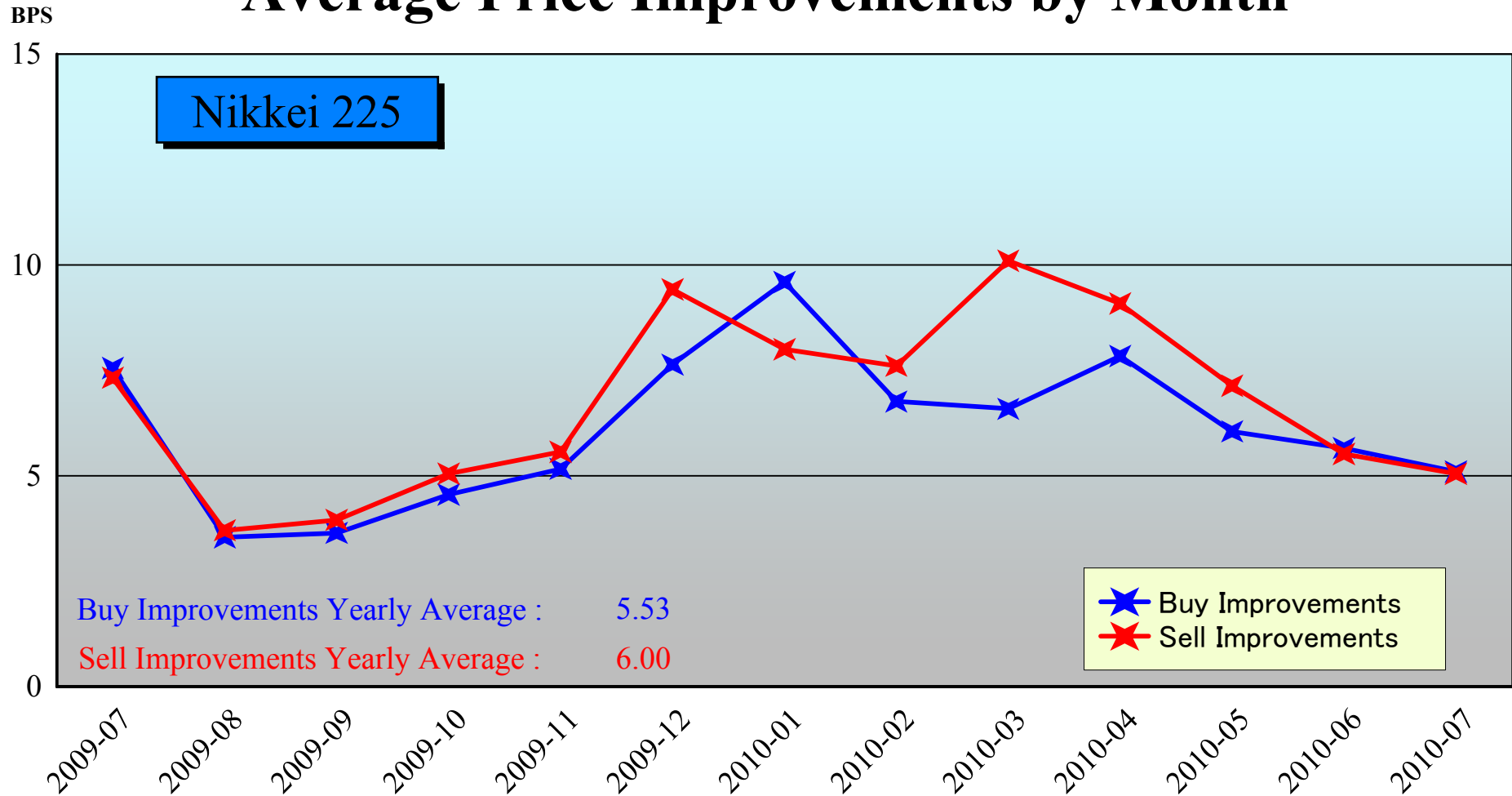
Nikkei 225 (Jul-2010)



Note1: Excluded the executions from before 9AM, lunch break, and after 3PM

Note2: Avg. Price Improvements are based on Japannext vs. Primary Exchange prices

Average Price Improvements by Month



Note1: Excluded the executions from before 9AM, lunch break, and after 3PM

Note2: Avg. Price Improvements are based on Japannext vs. Primary Exchange prices

Day/Night Monthly Turnover for Top 25 Names (Jul-2010)

(DAY Session)

	SYMBOL	DESCRIPTION	TURNOVER (Million US\$ 1US\$=1Yen)
1	8411	MIZUHO FINANCIAL GROUP, INC.	55.15
2	8306	MITSUBISHI UFJ FINANCIAL GROUP, INC.	34.53
3	7203	TOYOTA MOTOR CORP.	32.58
4	7751	CANON INC.	27.58
5	4502	TAKEDA PHARMACEUTICAL CO., LTD.	17.56
6	6954	FANUC LTD.	15.87
7	8604	NOMURA HOLDINGS, INC.	15.71
8	6501	HITACHI, LTD.	15.20
9	6971	KYOCERA CORP.	14.46
10	6502	TOSHIBA CORP.	13.96
11	9020	EAST JAPAN RAILWAY CO.	12.64
12	6762	TDK CORP.	12.62
13	8031	mitsui & co., ltd.	12.28
14	9432	NIPPON TELEGRAPH & TELEPHONE CORP.	12.14
15	8001	ITOCHU CORP.	10.76
16	4063	SHIN-ETSU CHEMICAL CO., LTD.	10.41
17	7201	NISSAN MOTOR CO., LTD.	10.31
18	5401	NIPPON STEEL CORP.	9.35
19	7011	MITSUBISHI HEAVY IND., LTD.	8.76
20	8766	TOKIO MARINE HOLDINGS, INC.	8.57
21	4188	MITSUBISHI CHEMICAL HOLDINGS CORP.	8.47
22	8058	mitsubishi corp.	8.45
23	9531	TOKYO GAS CO., LTD.	8.29
24	8002	MARUBENI CORP.	7.89
25	5405	SUMITOMO METAL IND., LTD.	7.76

(NIGHT Session)

highlight : "Common" names for Day & NightTime

	SYMBOL	DESCRIPTION	TURNOVER (Million US\$ 1US\$=1Yen)
1	8411	MIZUHO FINANCIAL GROUP, INC.	11.55
2	8316	SUMITOMO MITSUI FINANCIAL GROUP, INC.	6.41
3	8306	MITSUBISHI UFJ FINANCIAL GROUP, INC.	4.91
4	2766	JAPAN WIND DEVELOPMENT CO., LTD.	4.75
5	7974	NINTENDO CO., LTD.	4.11
6	6758	SONY CORP.	3.75
7	7203	TOYOTA MOTOR CORP.	3.52
8	3236	PROPERST CO., LTD.	2.97
9	1605	INPEX CORP.	2.09
10	8031	mitsui & co., ltd.	2.05
11	8058	mitsubishi corp.	1.88
12	8900	SEI CREST CO., LTD.	1.83
13	7751	CANON INC.	1.71
14	6764	SANYO ELECTRIC CO., LTD.	1.53
15	6501	HITACHI, LTD.	1.43
16	6752	PANASONIC CORP.	1.42
17	5233	TAIHEIYO CEMENT CORP.	1.42
18	7201	NISSAN MOTOR CO., LTD.	1.35
19	1321	NIKKEI 225 EXCHANGE TRADED FUND	1.32
20	6665	ELPIDA MEMORY, INC.	1.32
21	2342	TRANS GENIC INC.	1.19
22	7267	HONDA MOTOR CO., LTD.	1.15
23	8604	NOMURA HOLDINGS, INC.	1.07
24	6502	TOSHIBA CORP.	0.99
25	9432	NIPPON TELEGRAPH & TELEPHONE CORP.	0.97

Improvements of Monthly Turnover for Top 25 Names (Jul-2010)

(Daytime Session)

	RIC	NAME	Sell Executions							Improve Avg. BPS	Buy Executions							Improve Avg. BPS
			Worse(A)		Equal(B)		Better(C)		(B) + (C)		Worse(A)		Equal(B)		Better(C)		(B) + (C)	
1	8411.T	MIZUHO	3	0.15%	38	1.87%	1,989	97.98%	99.85%	33.19	1	0.04%	36	1.40%	2,535	98.56%	99.96%	21.57
2	8306.T	MUFG	2	0.11%	122	6.62%	1,720	93.28%	99.89%	7.48	8	0.39%	128	6.19%	1,932	93.42%	99.61%	5.33
3	7203.T	TOYOTA	5	0.45%	63	5.72%	1,033	93.82%	99.55%	3.59	11	1.15%	110	11.46%	839	87.40%	98.85%	3.48
4	7751.T	CANON	6	0.71%	90	10.70%	745	88.59%	99.29%	2.92	17	1.67%	88	8.64%	914	89.70%	98.33%	2.29
5	4502.T	TAKEDAP	1	0.20%	46	9.15%	456	90.66%	99.80%	2.86	31	3.16%	38	3.88%	911	92.96%	96.84%	1.90
6	6954.T	FANUC	28	4.97%	16	2.84%	519	92.18%	95.03%	2.66	41	6.81%	38	6.31%	523	86.88%	93.19%	2.87
7	8604.T	NOMRAHD	9	0.88%	48	4.67%	970	94.45%	99.12%	4.29	2	0.22%	94	10.20%	826	89.59%	99.78%	4.47
8	6501.T	HITACHI	11	1.75%	14	2.23%	603	96.02%	98.25%	5.44	4	0.62%	33	5.15%	604	94.23%	99.38%	5.83
9	6971.T	KYOCERA	11	1.92%	29	5.07%	532	93.01%	98.08%	2.20	3	0.50%	34	5.71%	558	93.78%	99.50%	3.11
10	6502.T	TOSHIBA	9	1.62%	13	2.34%	533	96.04%	98.38%	4.79	5	1.30%	4	1.04%	375	97.66%	98.70%	4.05
11	9020.T	JR EAST	3	0.54%	28	5.05%	523	94.40%	99.46%	2.38	22	2.98%	27	3.65%	690	93.37%	97.02%	2.59
12	6762.T	TDK	5	0.95%	30	5.68%	493	93.37%	99.05%	3.85	10	1.85%	48	8.87%	483	89.28%	98.15%	3.85
13	8031.T	mitsui	58	5.12%	99	8.74%	976	86.14%	94.88%	2.70	34	5.01%	107	15.76%	538	79.23%	94.99%	3.38
14	9432.T	NTT	6	0.94%	38	5.97%	593	93.09%	99.06%	2.44	8	1.25%	35	5.48%	596	93.27%	98.75%	3.08
15	8001.T	ITOCHU	10	1.10%	92	10.15%	804	88.74%	98.90%	5.66	66	5.08%	55	4.24%	1,177	90.68%	94.92%	3.02
16	4063.T	SINETUC	8	2.23%	44	12.29%	306	85.47%	97.77%	2.39	26	4.02%	63	9.74%	558	86.24%	95.98%	2.01
17	7201.T	NISSAN	3	0.29%	73	6.97%	972	92.75%	99.71%	3.10	13	1.73%	77	10.27%	660	88.00%	98.27%	3.58
18	5401.T	NPSTEEL	0	0.00%	9	2.12%	415	97.88%	100.00%	5.98	7	1.46%	8	1.67%	465	96.88%	98.54%	6.50
19	7011.T	MHI	13	1.90%	5	0.73%	666	97.37%	98.10%	5.35	8	2.22%	23	6.37%	330	91.41%	97.78%	5.95
20	8766.T	TOKIOMAR	70	6.09%	313	27.22%	767	66.70%	93.91%	4.42	45	3.40%	177	13.36%	1,103	83.25%	96.60%	5.81
21	4188.T	MTBCM HD	3	0.41%	8	1.09%	721	98.50%	99.59%	7.16	20	3.74%	23	4.30%	492	91.96%	96.26%	5.90
22	8058.T	MITBISI	47	5.17%	206	22.66%	656	72.17%	94.83%	3.55	47	6.05%	178	22.91%	552	71.04%	93.95%	4.05
23	9531.T	TKO-GAS	0	0.00%	6	1.76%	335	98.24%	100.00%	4.25	1	0.18%	6	1.09%	542	98.72%	99.82%	5.14
24	8002.T	MARBENI	2	0.44%	20	4.37%	436	95.20%	99.56%	3.36	9	1.84%	20	4.09%	460	94.07%	98.16%	3.91
25	5405.T	SMI-MTI	0	0.00%	4	0.81%	488	99.19%	100.00%	7.96	1	0.19%	8	1.55%	507	98.26%	99.81%	8.80

Note1: Excluded the executions from before 9AM, lunch break, and after 3PM

Note2: Avg. Price Improvements are based on Japannext vs. Primary Exchange prices