

# Monthly Statistics

Aug-2010

*Japannext PTS*

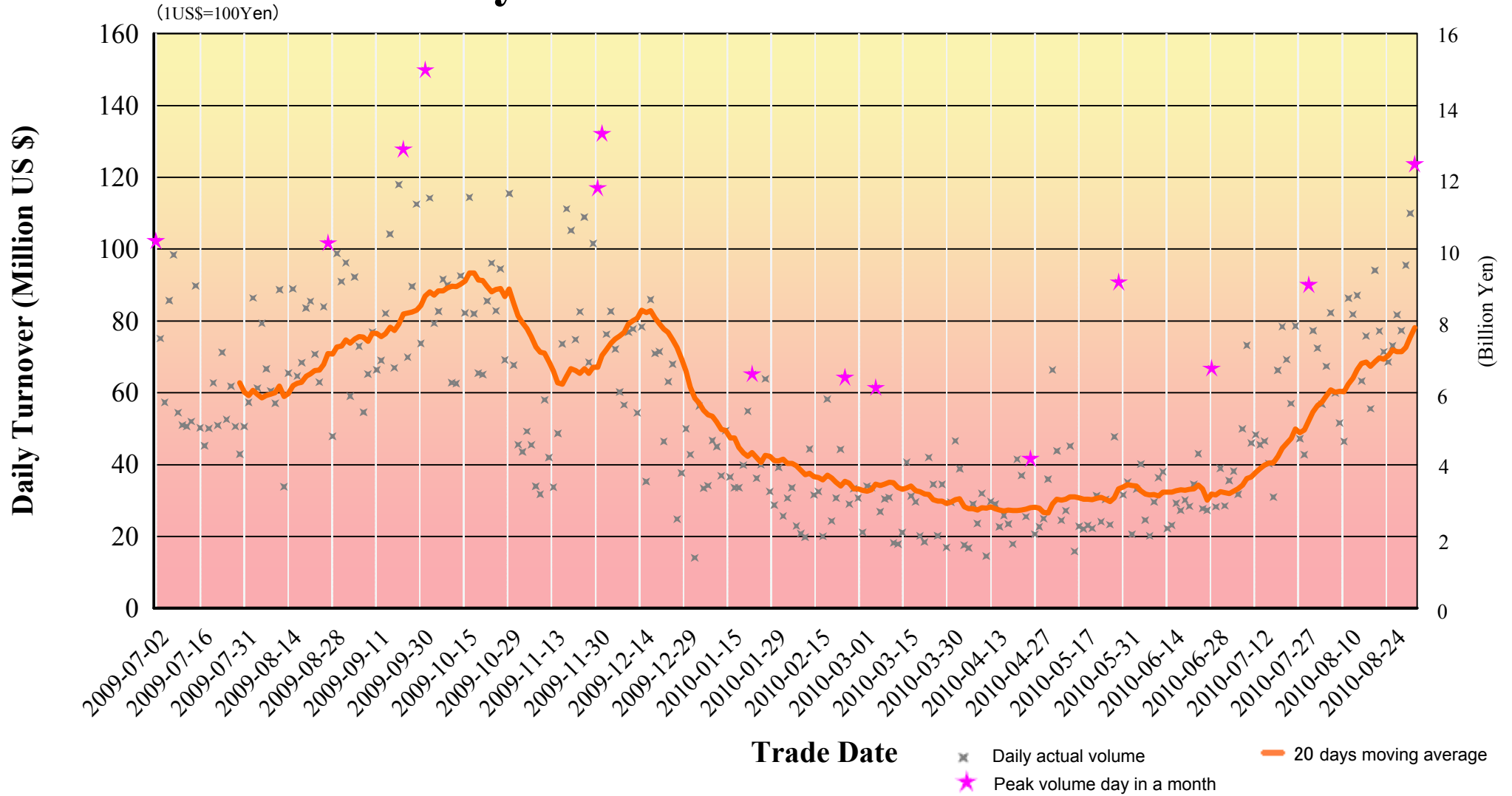
---

*SBI Japannext Co., Ltd*

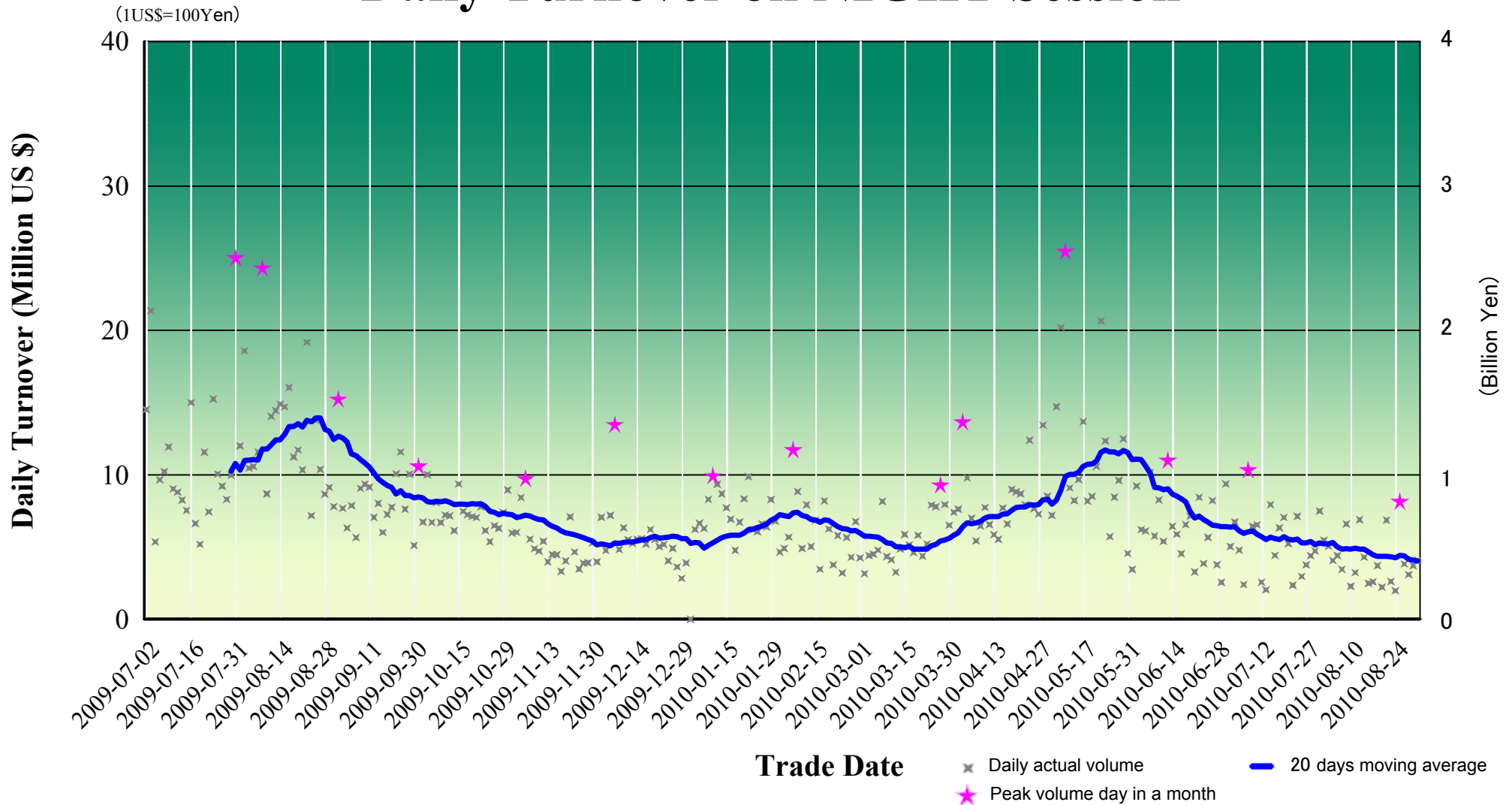
**Disclaimer**

Information provided is for reference purposes and does not constitute financial product advice nor is construed as an offer to sell or the solicitation of an offer to buy any security. The ownership and the intellectual property rights of this information solely and exclusively belong to SBI Japannext Co.,Ltd. (“SBIJ”). Accordingly users are permitted to get an access and use of the Information for their own personal, non-commercial and internal use only. Although SBIJ has made every effort to ensure the accuracy of the information as at the date of publication, SBIJ does not give any warranty or representation as to the accuracy, reliability or completeness of the information. To the extent permitted by law, SBIJ and its employees, officers and contractors shall not be liable for any loss or damage arising in any way (including by way of negligence) from or in connection with any information provided or omitted or from any one acting or refraining to act in reliance on this information.

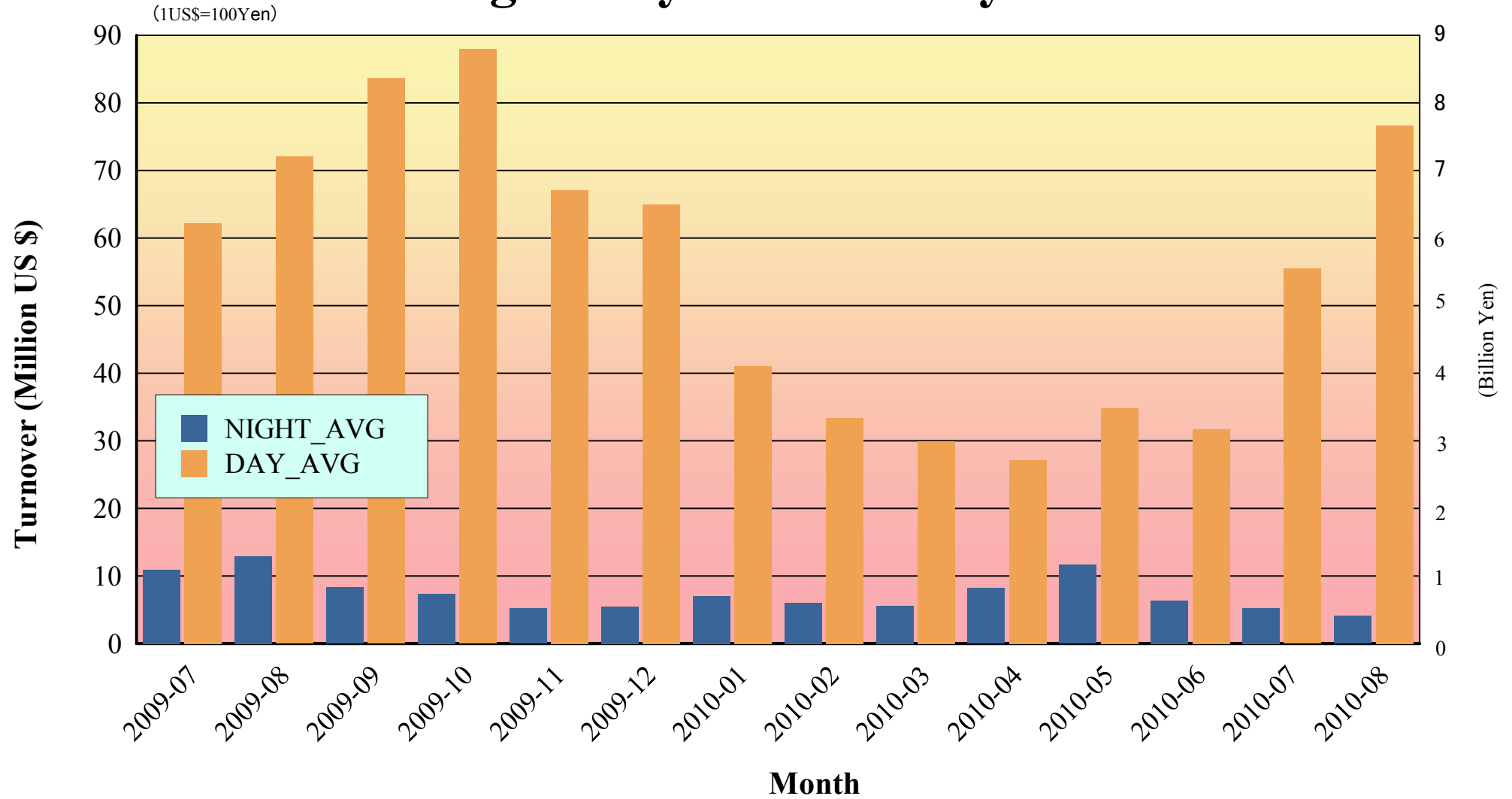
# Daily Turnover on DAY Session



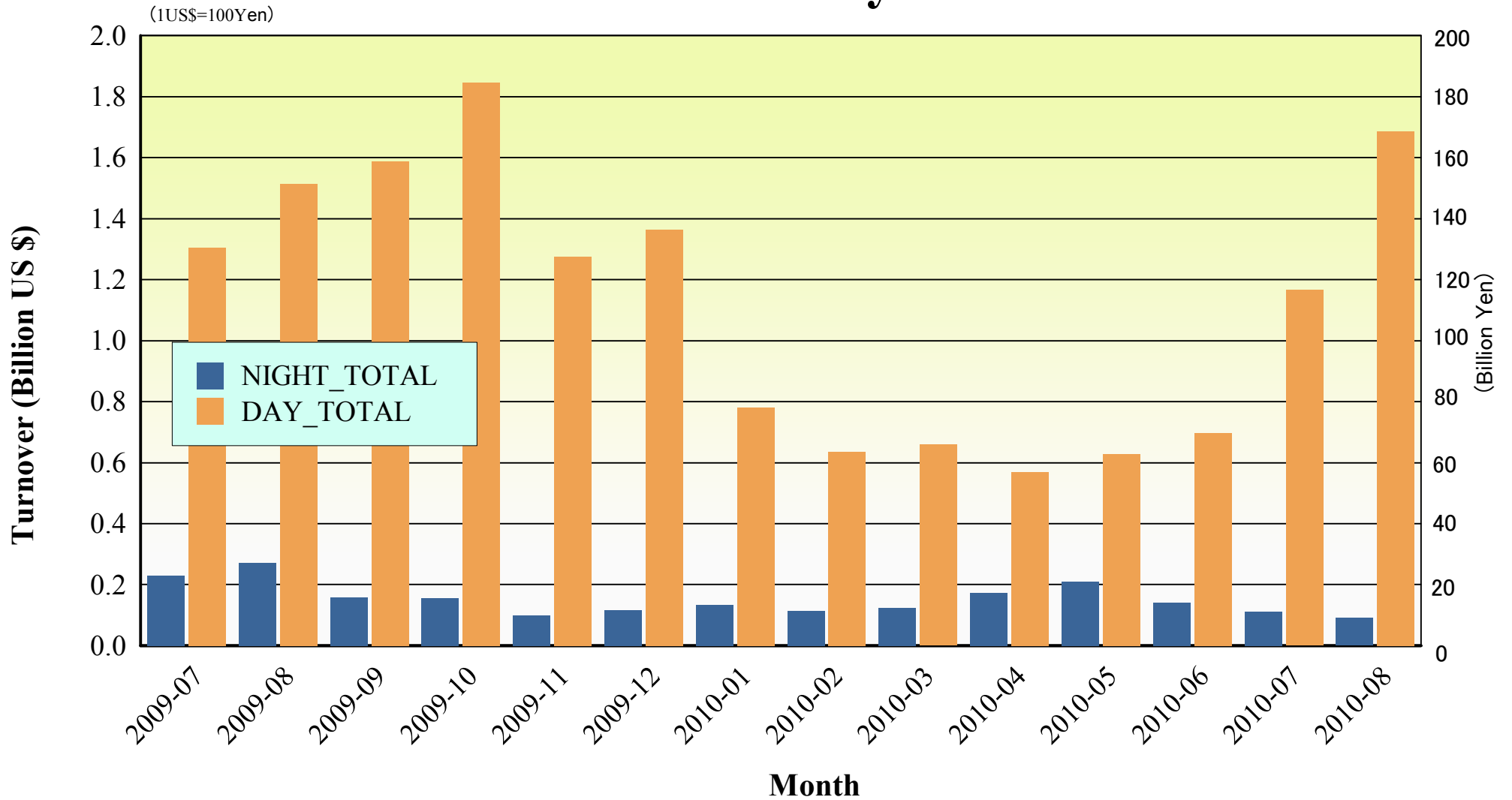
# Daily Turnover on NIGHT Session



# Average Daily Turnover by Month

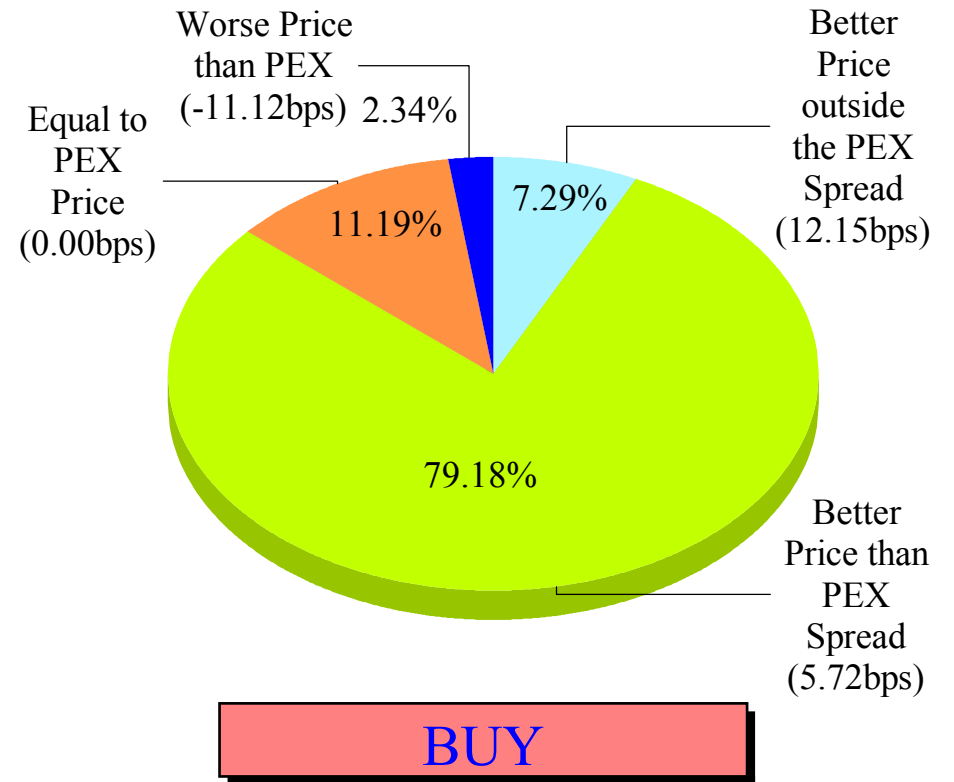
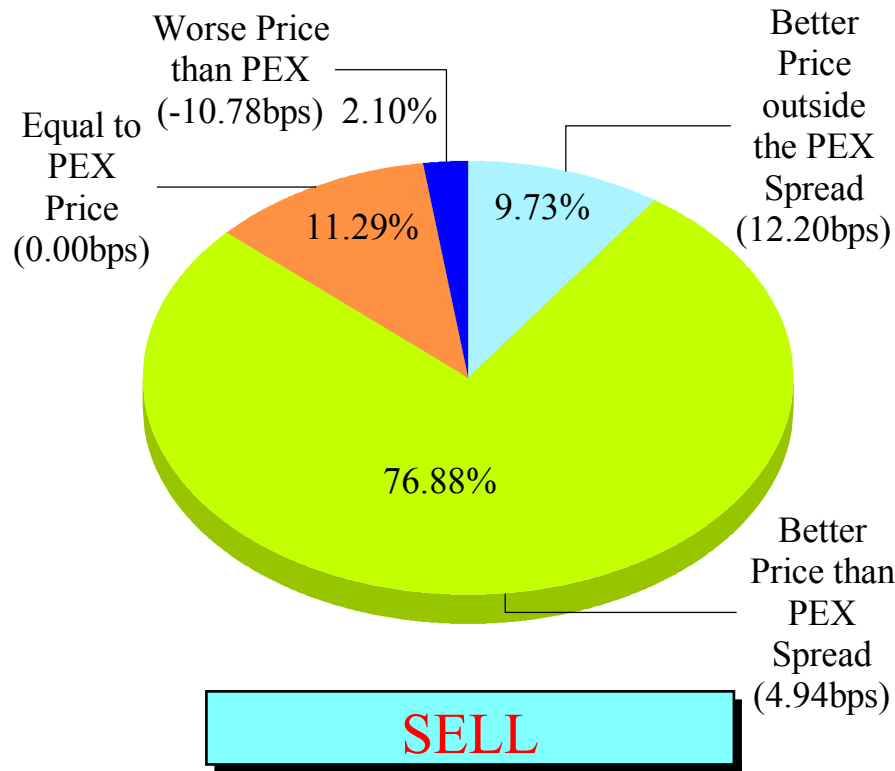


# Total Turnover by Month



## "Daytime Session" Execution

### Nikkei 225 ( Aug-2010)



Note1: Excluded the executions from before 9AM, lunch break, and after 3PM

Note2: Avg. Price Improvement are based on Japannext vs. Primary Exchange prices

# Improvement of Order (bps)

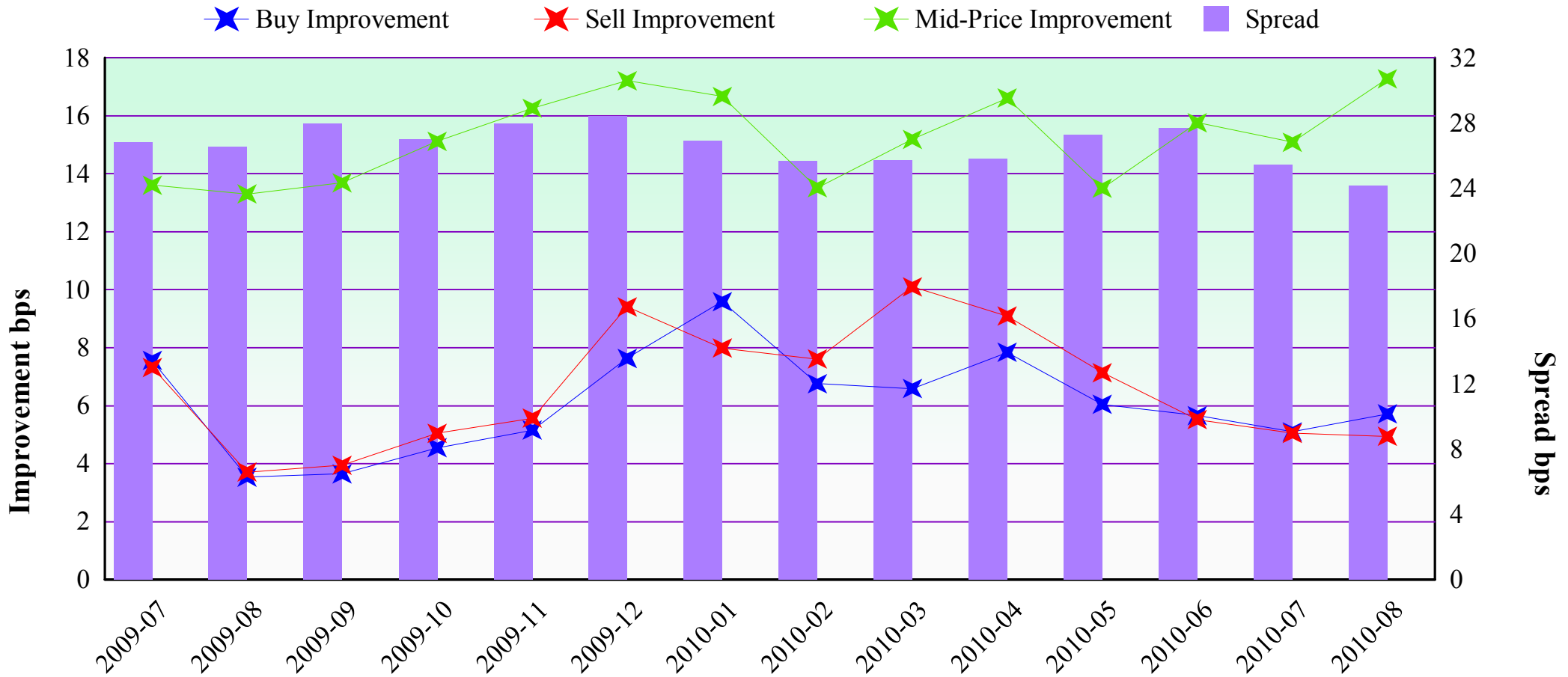
**Nikkei 225 ( Aug-2010 )**



Note1: Excluded the executions from before 9AM, lunch break, and after 3PM  
 Note2: Avg. Price Improvements are based on Japannext vs. Primary Exchange prices

## Improvement of Execution (bps)

**Nikkei 225 ( Aug-2010)**



Note1: Excluded the executions from before 9AM, lunch break, and after 3PM

Note2: Avg. Price Improvements are based on Japannext vs. Primary Exchange prices



## Day/Night Monthly Turnover for Top 25 Names

(DAY Session)

	SYMBOL	SYMBOL	TURNOVER (Million US\$ 1US\$=1Yen)	Market-share (%)
1	8411	MIZUHO FINANCIAL GROUP, INC.	79.29	2.34
2	7203	TOYOTA MOTOR CORP.	62.66	1.09
3	8306	MITSUBISHI UFJ FINANCIAL GROUP, INC.	60.48	1.45
4	6764	SANYO ELECTRIC CO., LTD.	49.99	5.96
5	7751	CANON INC.	39.49	1.06
6	9432	NIPPON TELEGRAPH & TELEPHONE CORP.	27.31	1.63
7	4502	TAKEDA PHARMACEUTICAL CO., LTD.	25.03	1.32
8	8604	NOMURA HOLDINGS, INC.	22.02	0.69
9	6501	HITACHI, LTD.	20.44	0.80
10	6954	FANUC LTD.	19.93	0.72
11	9020	EAST JAPAN RAILWAY CO.	19.68	1.65
12	8058	MITSUBISHI CORP.	19.33	0.65
13	7201	NISSAN MOTOR CO., LTD.	19.00	0.80
14	6502	TOSHIBA CORP.	18.99	0.71
15	5401	NIPPON STEEL CORP.	18.15	1.40
16	7974	NINTENDO CO., LTD.	17.81	0.70
17	8031	mitsui & CO., LTD.	16.41	0.59
18	8802	MITSUBISHI ESTATE CO., LTD.	16.00	0.90
19	8403	SUMITOMO TRUST & BANKING CO., LTD.	15.38	1.98
20	6971	KYOCERA CORP.	15.05	0.87
21	1605	INPEX CORP.	14.42	0.36
22	8035	TOKYO ELECTRON LTD.	13.20	0.62
23	9101	NIPPON YUSEN K.K.	13.14	1.22
24	9501	THE TOKYO ELECTRIC POWER CO., INC.	13.02	1.03
25	7011	MITSUBISHI HEAVY IND., LTD.	12.86	1.75

( Aug-2010 )

(NIGHT Session)

highlight : "Common" names for Day & NightTime

	SYMBOL	DESCRIPTION	TURNOVER (Million US\$ 1US\$=1Yen)
1	8411	MIZUHO FINANCIAL GROUP, INC.	7.67
2	7203	TOYOTA MOTOR CORP.	5.17
3	8316	SUMITOMO MITSUI FINANCIAL GROUP, INC.	3.87
4	8306	MITSUBISHI UFJ FINANCIAL GROUP, INC.	3.11
5	6758	SONY CORP.	2.42
6	7974	NINTENDO CO., LTD.	2.16
7	8058	MITSUBISHI CORP.	1.86
8	6501	HITACHI, LTD.	1.84
9	1321	NIKKEI 225 EXCHANGE TRADED FUND	1.62
10	7267	HONDA MOTOR CO., LTD.	1.56
11	8848	LEOPALACE21 CORP.	1.53
12	8031	mitsui & CO., LTD.	1.45
13	6752	PANASONIC CORP.	1.41
14	3236	PROPERST CO., LTD.	1.33
15	6502	TOSHIBA CORP.	1.33
16	8925	ARDEPRO CO., LTD.	1.28
17	6665	ELPIDA MEMORY, INC.	1.23
18	6764	SANYO ELECTRIC CO., LTD.	1.15
19	4063	SHIN-ETSU CHEMICAL CO., LTD.	1.05
20	7751	CANON INC.	1.01
21	2432	DENA CO., LTD.	0.78
22	7201	NISSAN MOTOR CO., LTD.	0.77
23	9984	SOFTBANK CORP.	0.75
24	8604	NOMURA HOLDINGS, INC.	0.75
25	3823	ACRODEA, INC.	0.73

## Improvement of Monthly Turnover for Top 25 Names ( Aug-2010 )

(Daytime Session)

	RIC	NAME	Sell Executions							Improve Avg. BPS	Buy Executions							Improve Avg. BPS
			Worse(A)		Equal(B)		Better(C)		(B) + (C)		Worse(A)		Equal(B)		Better(C)		(B) + (C)	
1	8411.T	MIZUHO	1	0.03%	25	0.79%	3,150	99.18%	99.97%	24.66	1	0.02%	15	0.36%	4,178	99.62%	99.98%	27.14
2	7203.T	TOYOTA	44	3.03%	74	5.10%	1,334	91.87%	96.97%	3.45	36	3.70%	93	9.57%	843	86.73%	96.30%	3.23
3	8306.T	MUFG	3	0.13%	162	7.12%	2,110	92.75%	99.87%	6.13	13	0.48%	108	4.02%	2,564	95.49%	99.52%	6.72
4	6764.T	SANYOEL	0	0.00%	0	0.00%	796	100.00%	100.00%	16.71	0	0.00%	1	0.08%	1,204	99.92%	100.00%	38.70
5	7751.T	CANON	8	0.84%	55	5.74%	895	93.42%	99.16%	2.64	10	1.10%	117	12.91%	779	85.98%	98.90%	2.16
6	9432.T	NTT	38	3.80%	78	7.79%	885	88.41%	96.20%	2.19	1	0.11%	122	13.66%	770	86.23%	99.89%	2.85
7	4502.T	TAKEDAP	8	1.15%	31	4.45%	658	94.40%	98.85%	1.93	5	0.56%	64	7.20%	820	92.24%	99.44%	2.07
8	8604.T	NOMRAHD	7	0.39%	78	4.30%	1,727	95.31%	99.61%	2.98	4	0.33%	116	9.54%	1,096	90.13%	99.67%	5.86
9	6501.T	HITACHI	16	1.87%	39	4.55%	802	93.58%	98.13%	5.22	12	1.55%	30	3.87%	733	94.58%	98.45%	5.69
10	6954.T	FANUC	25	3.59%	8	1.15%	663	95.26%	96.41%	2.00	19	4.61%	16	3.88%	377	91.50%	95.39%	2.61
11	9020.T	JR EAST	10	1.58%	50	7.91%	572	90.51%	98.42%	3.04	13	1.47%	25	2.83%	846	95.70%	98.53%	3.44
12	8058.T	MITBISI	52	2.44%	486	22.77%	1,596	74.79%	97.56%	4.43	72	5.08%	405	28.58%	940	66.34%	94.92%	3.64
13	7201.T	NISSAN	8	0.62%	210	16.30%	1,070	83.07%	99.38%	3.09	44	4.04%	152	13.94%	894	82.02%	95.96%	2.57
14	6502.T	TOSHIBA	2	0.32%	8	1.29%	610	98.39%	99.68%	4.50	1	0.20%	15	3.03%	479	96.77%	99.80%	5.46
15	5401.T	NPSTEEL	3	0.39%	7	0.91%	760	98.70%	99.61%	4.71	4	0.66%	18	2.98%	582	96.36%	99.34%	5.13
16	7974.OS	NINTEND	16	3.57%	21	4.69%	411	91.74%	96.43%	6.70	47	15.31%	31	10.10%	229	74.59%	84.69%	4.79
17	8031.T	mitsui	13	1.17%	75	6.76%	1,021	92.06%	98.83%	3.21	17	2.45%	92	13.24%	586	84.32%	97.55%	2.48
18	8802.T	MTB-EST	37	4.97%	42	5.65%	665	89.38%	95.03%	3.79	35	7.61%	22	4.78%	403	87.61%	92.39%	3.03
19	8403.T	SMI-TB	2	0.30%	35	5.25%	630	94.45%	99.70%	3.18	1	0.10%	28	2.82%	963	97.08%	99.90%	6.20
20	6971.T	KYOCERA	4	0.80%	14	2.81%	480	96.39%	99.20%	2.05	2	0.51%	43	10.97%	347	88.52%	99.49%	2.49
21	1605.T	INPEX	9	1.03%	60	6.85%	807	92.12%	98.97%	2.03	19	2.65%	127	17.69%	572	79.67%	97.35%	1.98
22	8035.T	TKOELCN	13	1.86%	69	9.89%	616	88.25%	98.14%	2.22	12	2.67%	87	19.38%	350	77.95%	97.33%	3.43
23	9101.T	NYKLINE	2	0.38%	6	1.13%	525	98.50%	99.62%	4.81	6	1.06%	25	4.41%	536	94.53%	98.94%	3.86
24	9501.T	TEPCO	59	4.58%	302	23.45%	927	71.97%	95.42%	3.12	75	5.36%	233	16.67%	1,090	77.97%	94.64%	4.17
25	7011.T	MHI	1	0.30%	8	2.37%	328	97.33%	99.70%	4.24	1	0.27%	7	1.87%	367	97.87%	99.73%	4.68

Note1: Excluded the executions from before 9AM, lunch break, and after 3PM

Note2: Avg. Price Improvement are based on Japannext vs. Primary Exchange prices