

# Monthly Statistics

Sep-2010

*Japannext PTS*

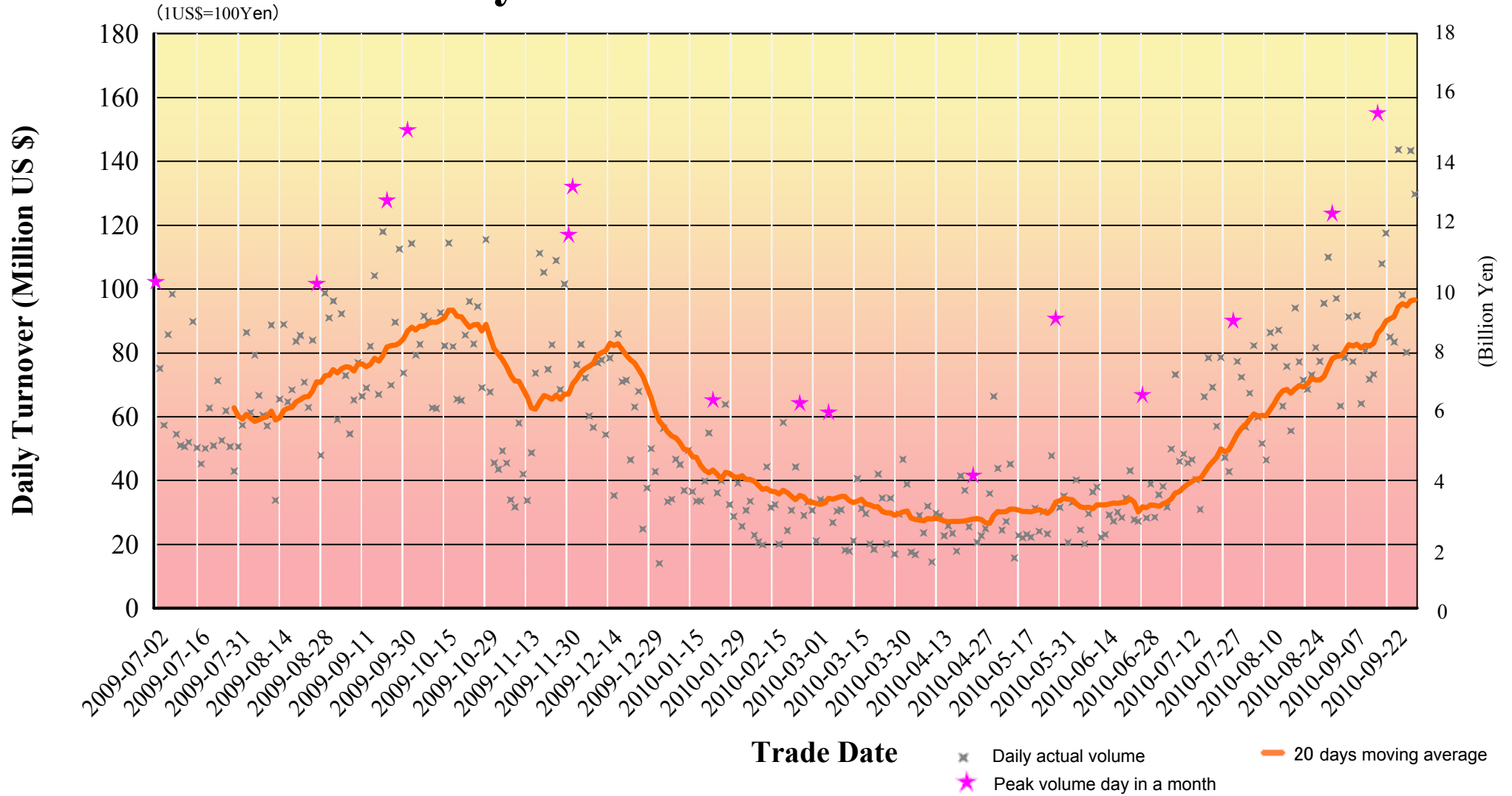
---

*SBI Japannext Co., Ltd*

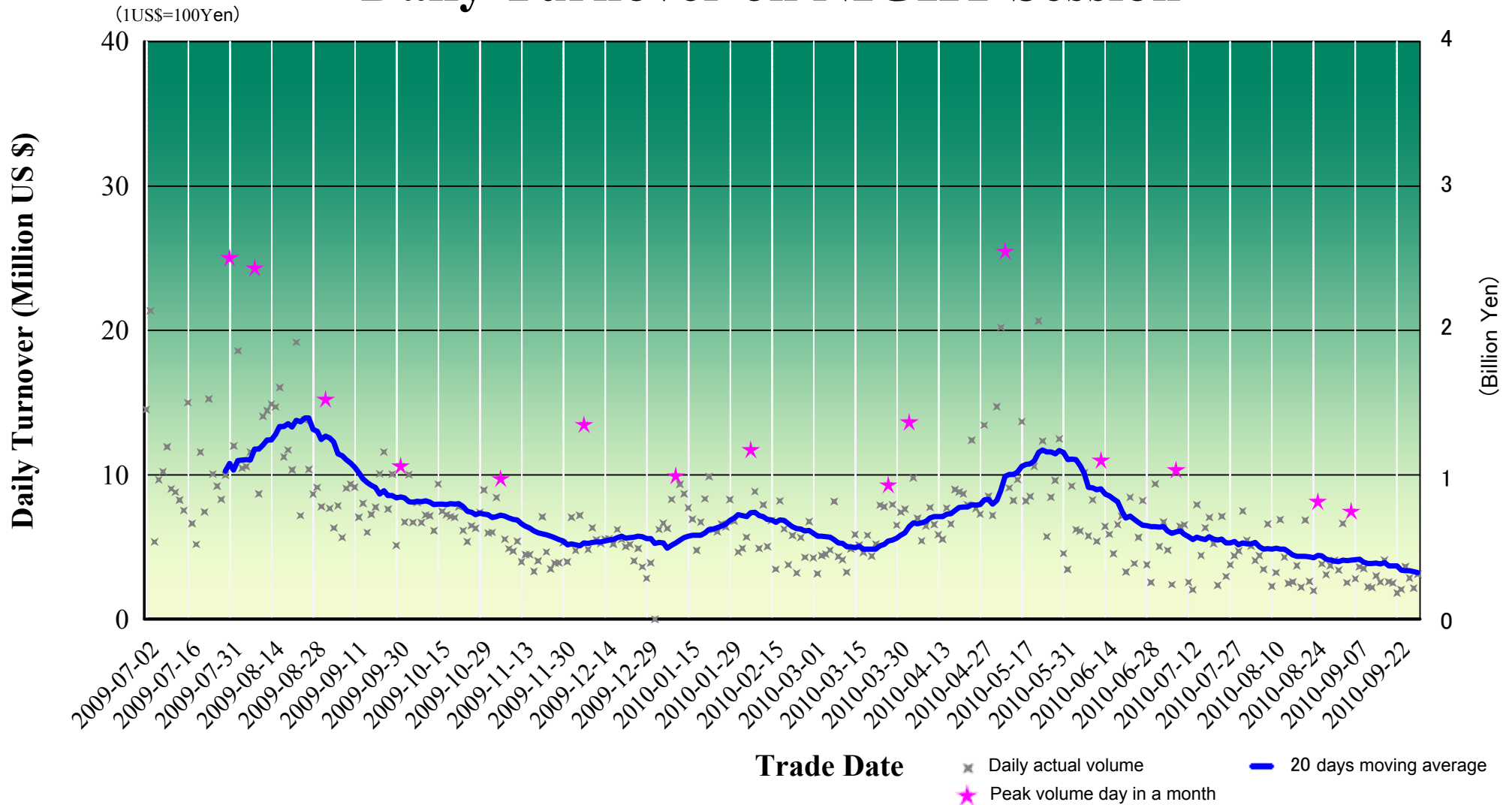
**Disclaimer**

Information provided is for reference purposes and does not constitute financial product advice nor is construed as an offer to sell or the solicitation of an offer to buy any security. The ownership and the intellectual property rights of this information solely and exclusively belong to SBI Japannext Co.,Ltd. (“SBIJ”). Accordingly users are permitted to get an access and use of the Information for their own personal, non-commercial and internal use only. Although SBIJ has made every effort to ensure the accuracy of the information as at the date of publication, SBIJ does not give any warranty or representation as to the accuracy, reliability or completeness of the information. To the extent permitted by law, SBIJ and its employees, officers and contractors shall not be liable for any loss or damage arising in any way (including by way of negligence) from or in connection with any information provided or omitted or from any one acting or refraining to act in reliance on this information.

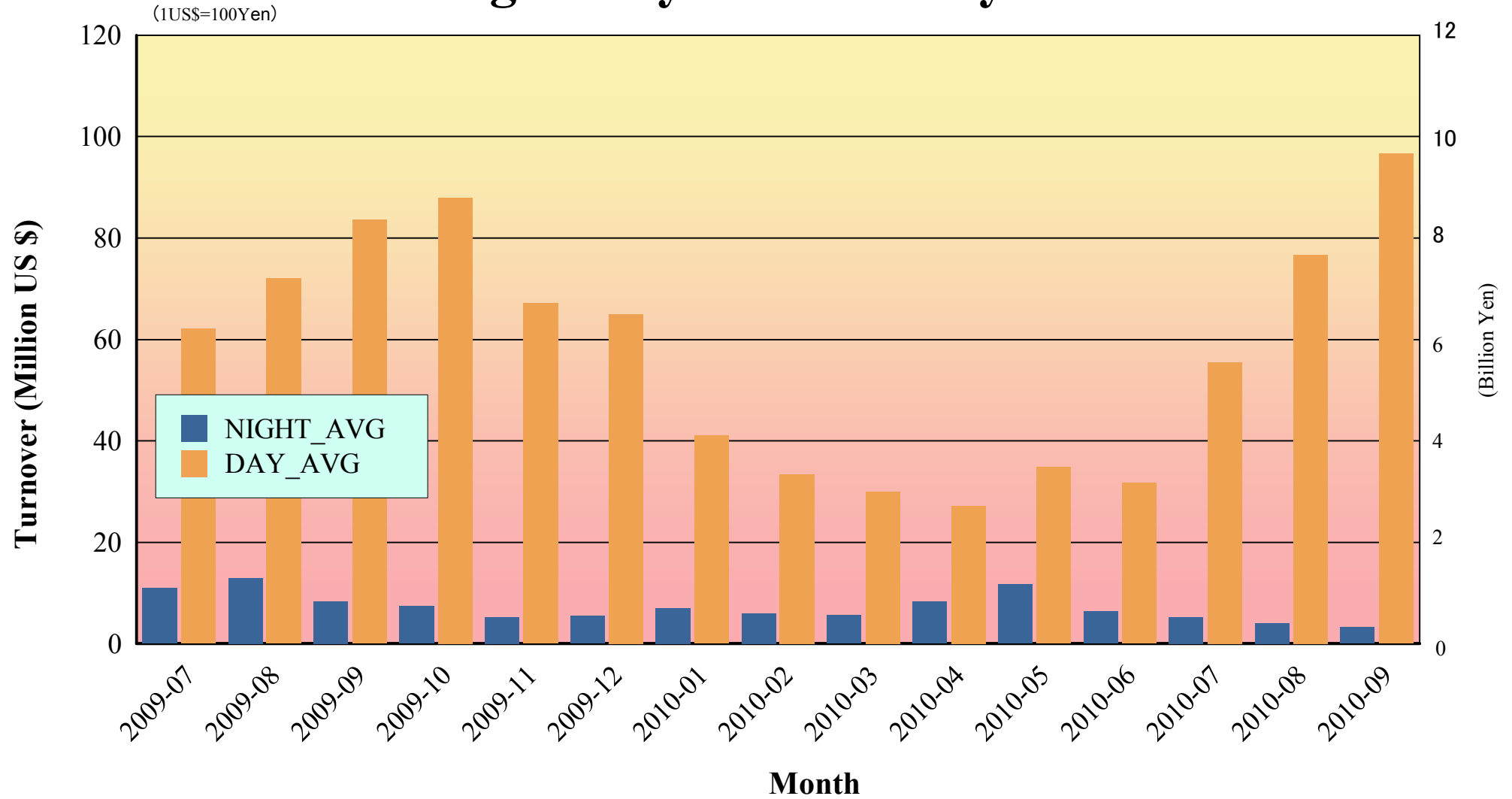
# Daily Turnover on DAY Session



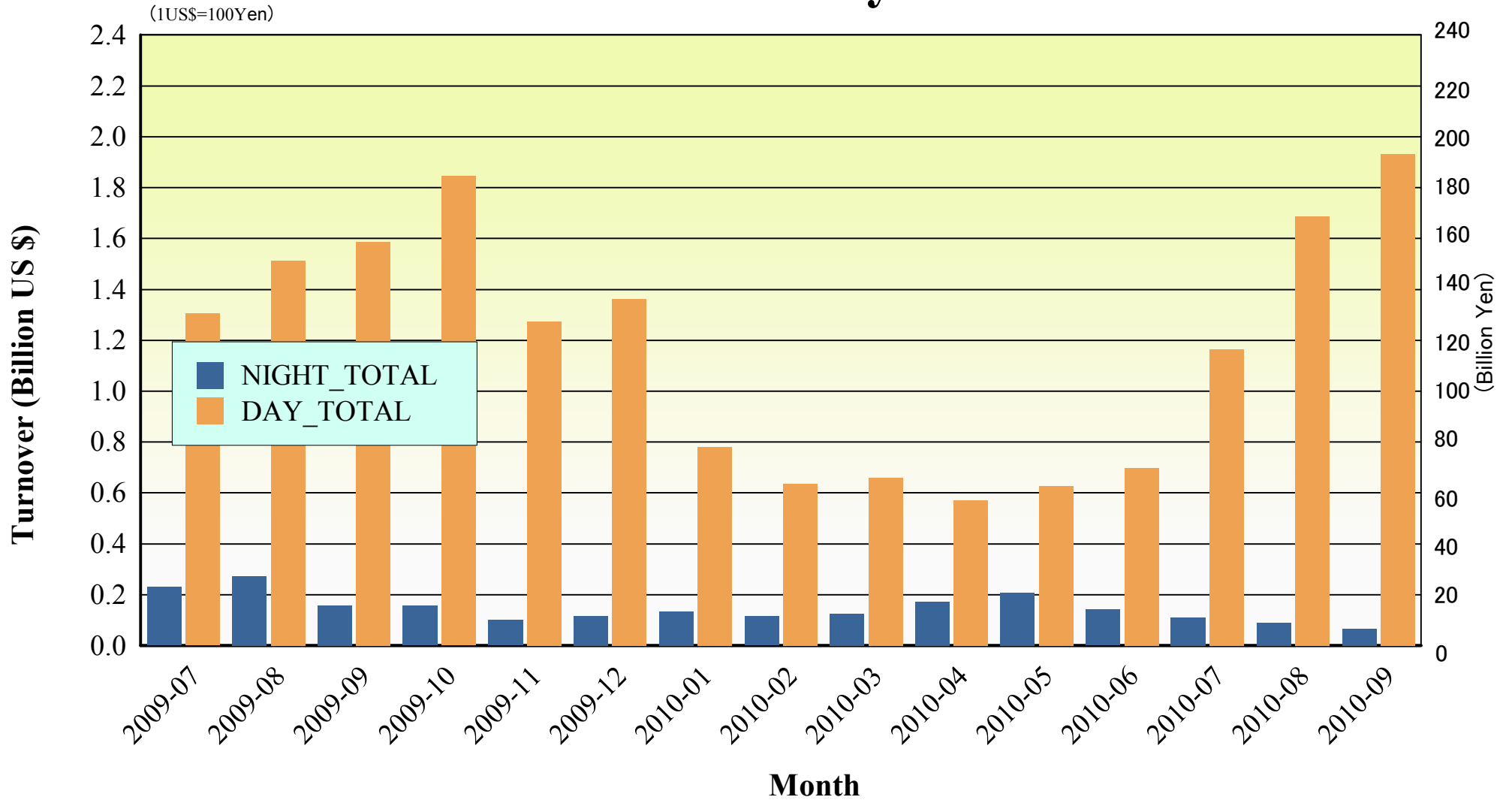
# Daily Turnover on NIGHT Session



# Average Daily Turnover by Month

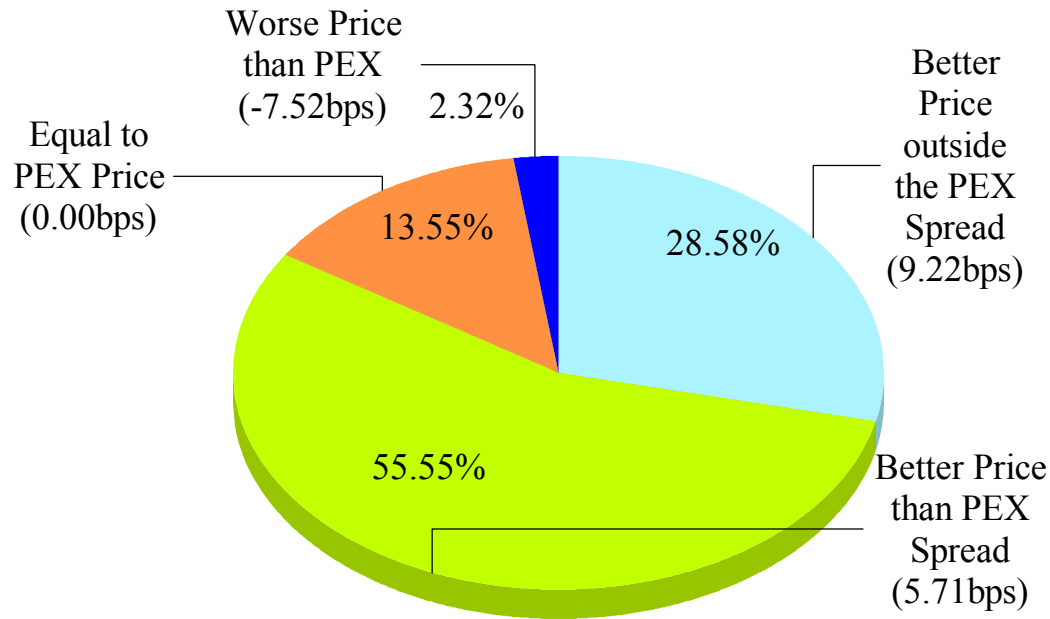


# Total Turnover by Month

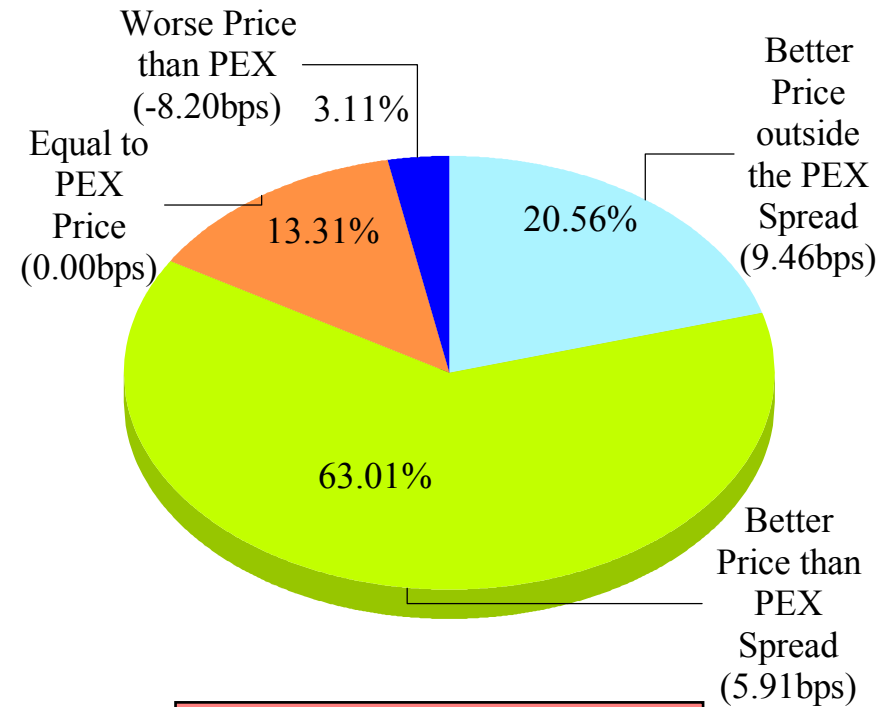


## "Daytime Session" Execution

**Nikkei 225 ( Sep-2010 )**



**SELL**



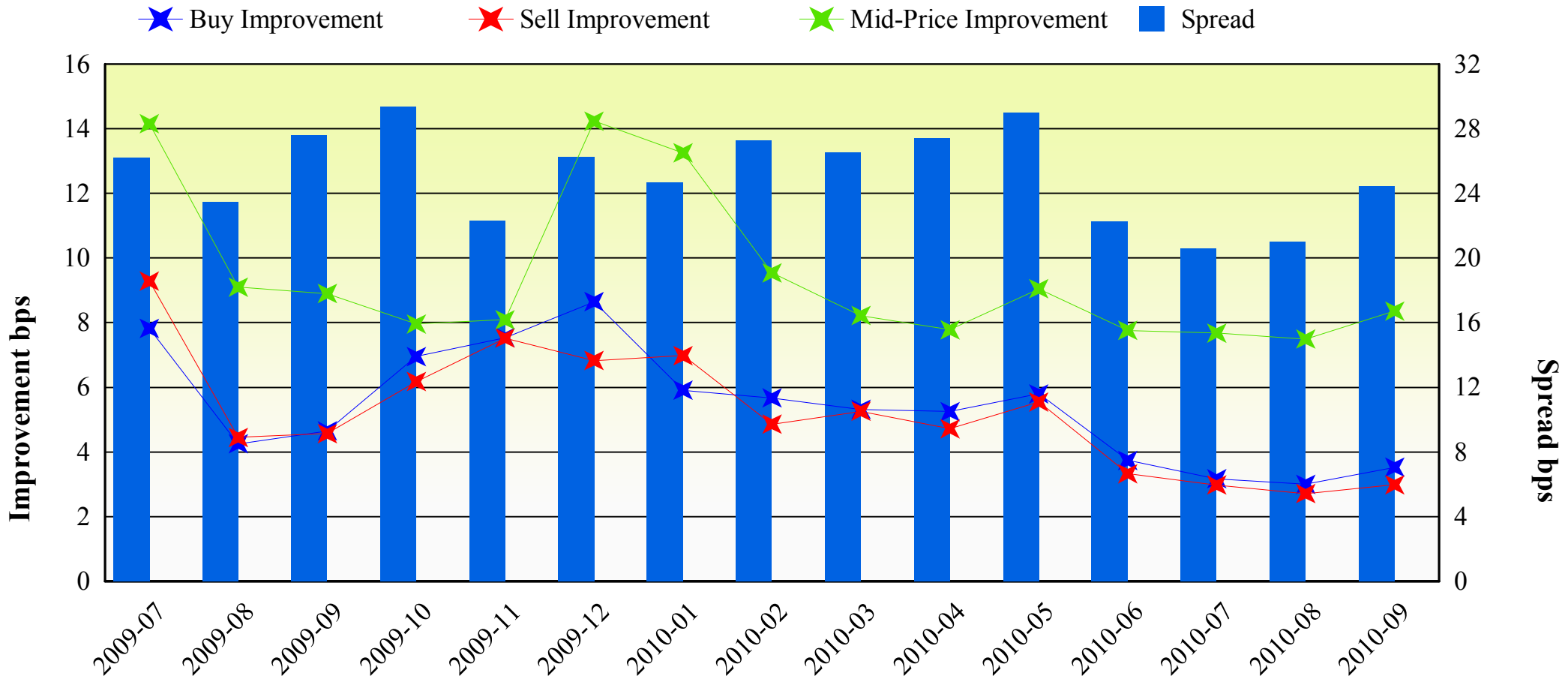
**BUY**

Note1: Excluded the executions from before 9AM, lunch break, and after 3PM

Note2: Avg. Price Improvement are based on Japannext vs. Primary Exchange prices

## Improvement of Order (bps)

**Nikkei 225 ( Sep-2010 )**



Note1: Excluded the executions from before 9AM, lunch break, and after 3PM  
 Note2: Avg. Price Improvements are based on Japannext vs. Primary Exchange prices

## Improvement of Execution (bps)

**Nikkei 225 ( Sep-2010 )**



Note1: Excluded the executions from before 9AM, lunch break, and after 3PM

Note2: Avg. Price Improvements are based on Japannext vs. Primary Exchange prices



## Day/Night Monthly Turnover for Top 25 Names

(DAY Session)

	SYMBOL	SYMBOL	TURNOVER (Million US\$ 1US\$=1Yen)	Market-share (%)
1	6764	SANYO ELECTRIC CO., LTD.	67.25	20.31
2	8411	MIZUHO FINANCIAL GROUP, INC.	63.29	2.05
3	7203	TOYOTA MOTOR CORP.	54.57	0.95
4	7751	CANON INC.	45.15	0.97
5	8306	MITSUBISHI UFJ FINANCIAL GROUP, INC.	44.22	1.18
6	7267	HONDA MOTOR CO., LTD.	33.14	0.80
7	8316	SUMITOMO MITSUI FINANCIAL GROUP, INC.	29.55	0.60
8	6954	FANUC LTD.	29.50	0.84
9	9020	EAST JAPAN RAILWAY CO.	27.02	1.51
10	8058	MITSUBISHI CORP.	26.74	0.94
11	6758	SONY CORP.	25.39	0.72
12	7974	NINTENDO CO., LTD.	24.32	0.72
13	8604	NOMURA HOLDINGS, INC.	23.38	0.69
14	4502	TAKEDA PHARMACEUTICAL CO., LTD.	23.19	1.14
15	6501	HITACHI, LTD.	22.64	0.85
16	6502	TOSHIBA CORP.	21.48	0.72
17	7201	NISSAN MOTOR CO., LTD.	20.82	0.78
18	8802	MITSUBISHI ESTATE CO., LTD.	20.80	1.15
19	8766	TOKIO MARINE HOLDINGS, INC.	19.92	1.59
20	8031	mitsui & CO., LTD.	19.31	0.76
21	9501	THE TOKYO ELECTRIC POWER CO., INC.	18.90	0.68
22	9531	TOKYO GAS CO., LTD.	17.98	2.26
23	9432	NIPPON TELEGRAPH & TELEPHONE CORP.	17.91	1.09
24	6301	KOMATSU LTD.	17.18	0.61
25	8801	mitsui FUDOSAN CO., LTD.	16.10	0.97

( Sep-2010 )

(NIGHT Session)

highlight : "Common" names for Day & NightTime

	SYMBOL	DESCRIPTION	TURNOVER (Million US\$ 1US\$=1Yen)
1	8411	MIZUHO FINANCIAL GROUP, INC.	4.35
2	7203	TOYOTA MOTOR CORP.	3.18
3	8306	MITSUBISHI UFJ FINANCIAL GROUP, INC.	2.97
4	8316	SUMITOMO MITSUI FINANCIAL GROUP, INC.	2.63
5	7974	NINTENDO CO., LTD.	2.60
6	8058	MITSUBISHI CORP.	1.42
7	1801	TAISEI CORP.	1.34
8	6758	SONY CORP.	1.09
9	6501	HITACHI, LTD.	1.09
10	8031	MITSUI & CO., LTD.	1.04
11	1321	NIKKEI 225 EXCHANGE TRADED FUND	1.03
12	4528	ONO PHARMACEUTICAL CO., LTD.	1.03
13	4523	EISAI CO., LTD.	0.96
14	4575	CANBAS CO., LTD.	0.95
15	6502	TOSHIBA CORP.	0.92
16	7751	CANON INC.	0.87
17	8604	NOMURA HOLDINGS, INC.	0.83
18	6665	ELPIDA MEMORY, INC.	0.83
19	2342	TRANS GENIC INC.	0.82
20	3823	ACRODEA, INC.	0.81
21	7267	HONDA MOTOR CO., LTD.	0.75
22	8303	SHINSEI BANK, LTD.	0.74
23	8815	TOKYU LAND CORP.	0.71
24	9202	ALL NIPPON AIRWAYS CO., LTD.	0.70
25	6764	SANYO ELECTRIC CO., LTD.	0.70

# Improvement of Monthly Turnover for Top 25 Names ( Sep-2010 )

(Daytime Session)

	RIC	NAME	Sell Executions							Improve Avg. BPS	Buy Executions							Improve Avg. BPS
			Worse(A)		Equal(B)		Better(C)		(B) + (C)		Worse(A)		Equal(B)		Better(C)		(B) + (C)	
1	6764.T	SANYOEL	0	0.00%	3	0.55%	542	99.45%	100.00%	22.02	0	0.00%	0	0.00%	1,113	100.00%	100.00%	44.45
2	8411.T	MIZUHO	1	0.02%	140	2.77%	4,908	97.21%	99.98%	25.33	1	0.02%	72	1.51%	4,691	98.47%	99.98%	33.59
3	7203.T	TOYOTA	38	1.76%	355	16.49%	1,760	81.75%	98.24%	6.01	67	3.94%	478	28.08%	1,157	67.98%	96.06%	5.64
4	7751.T	CANON	11	1.10%	135	13.50%	854	85.40%	98.90%	4.72	17	1.28%	216	16.22%	1,099	82.51%	98.72%	4.67
5	8306.T	MUFG	6	0.24%	232	9.26%	2,268	90.50%	99.76%	7.33	5	0.18%	395	14.47%	2,329	85.34%	99.82%	6.81
6	7267.T	HONDA	160	5.52%	412	14.23%	2,324	80.25%	94.48%	4.60	185	6.70%	747	27.07%	1,828	66.23%	93.30%	4.96
7	8316.T	SMFG	314	8.67%	147	4.06%	3,162	87.28%	91.33%	7.66	589	28.29%	420	20.17%	1,073	51.54%	71.71%	5.57
8	6954.T	FANUC	27	3.02%	55	6.15%	812	90.83%	96.98%	3.19	43	5.02%	23	2.68%	791	92.30%	94.98%	2.99
9	9020.T	JR EAST	5	0.57%	128	14.53%	748	84.90%	99.43%	5.59	3	0.32%	72	7.77%	852	91.91%	99.68%	3.48
10	8058.T	MITBISI	84	1.99%	543	12.89%	3,587	85.12%	98.01%	6.28	173	6.89%	376	14.97%	1,963	78.14%	93.11%	4.87
11	6758.T	SONY	134	4.49%	474	15.89%	2,375	79.62%	95.51%	4.96	184	7.76%	385	16.24%	1,802	76.00%	92.24%	4.43
12	7974.OS	NINTEND	4	1.26%	21	6.62%	292	92.11%	98.74%	6.44	11	1.57%	217	31.00%	472	67.43%	98.43%	5.56
13	8604.T	NOMRAHD	15	0.80%	199	10.55%	1,672	88.65%	99.20%	5.87	19	1.12%	134	7.92%	1,539	90.96%	98.88%	6.58
14	4502.T	TAKEDAP	2	0.40%	46	9.22%	451	90.38%	99.60%	2.83	16	2.05%	100	12.84%	663	85.11%	97.95%	2.85
15	6501.T	HITACHI	5	0.50%	91	9.14%	900	90.36%	99.50%	5.92	6	0.76%	39	4.92%	748	94.33%	99.24%	6.90
16	6502.T	TOSHIBA	8	0.86%	23	2.48%	896	96.66%	99.14%	4.64	3	0.47%	64	10.05%	570	89.48%	99.53%	6.71
17	7201.T	NISSAN	20	1.09%	369	20.16%	1,441	78.74%	98.91%	6.23	57	3.67%	195	12.56%	1,301	83.77%	96.33%	3.50
18	8802.T	MTB-EST	38	4.80%	45	5.68%	709	89.52%	95.20%	6.54	64	8.31%	38	4.94%	668	86.75%	91.69%	5.27
19	8766.T	TOKIOMAR	90	1.81%	405	8.13%	4,485	90.06%	98.19%	6.34	136	5.27%	401	15.55%	2,042	79.18%	94.73%	5.64
20	8031.T	mitsui	53	2.66%	139	6.99%	1,797	90.35%	97.34%	6.53	67	3.91%	160	9.35%	1,485	86.74%	96.09%	5.21
21	9501.T	TEPCO	55	1.96%	350	12.48%	2,400	85.56%	98.04%	5.03	93	5.14%	422	23.30%	1,296	71.56%	94.86%	4.10
22	9531.T	TKO-GAS	3	0.38%	12	1.51%	780	98.11%	99.62%	3.82	3	0.61%	47	9.53%	443	89.86%	99.39%	5.99
23	9432.T	NTT	9	1.22%	180	24.42%	548	74.36%	98.78%	4.31	6	0.86%	149	21.32%	544	77.83%	99.14%	4.18
24	6301.T	KOMATSU	27	1.15%	779	33.15%	1,544	65.70%	98.85%	5.63	37	1.83%	671	33.12%	1,318	65.05%	98.17%	5.09
25	8801.T	MTI-FU	47	7.59%	39	6.30%	533	86.11%	92.41%	5.14	21	3.92%	20	3.73%	495	92.35%	96.08%	6.14

Note1: Excluded the executions from before 9AM, lunch break, and after 3PM

Note2: Avg. Price Improvement are based on Japannext vs. Primary Exchange prices