

Monthly Statistics

Oct-2010

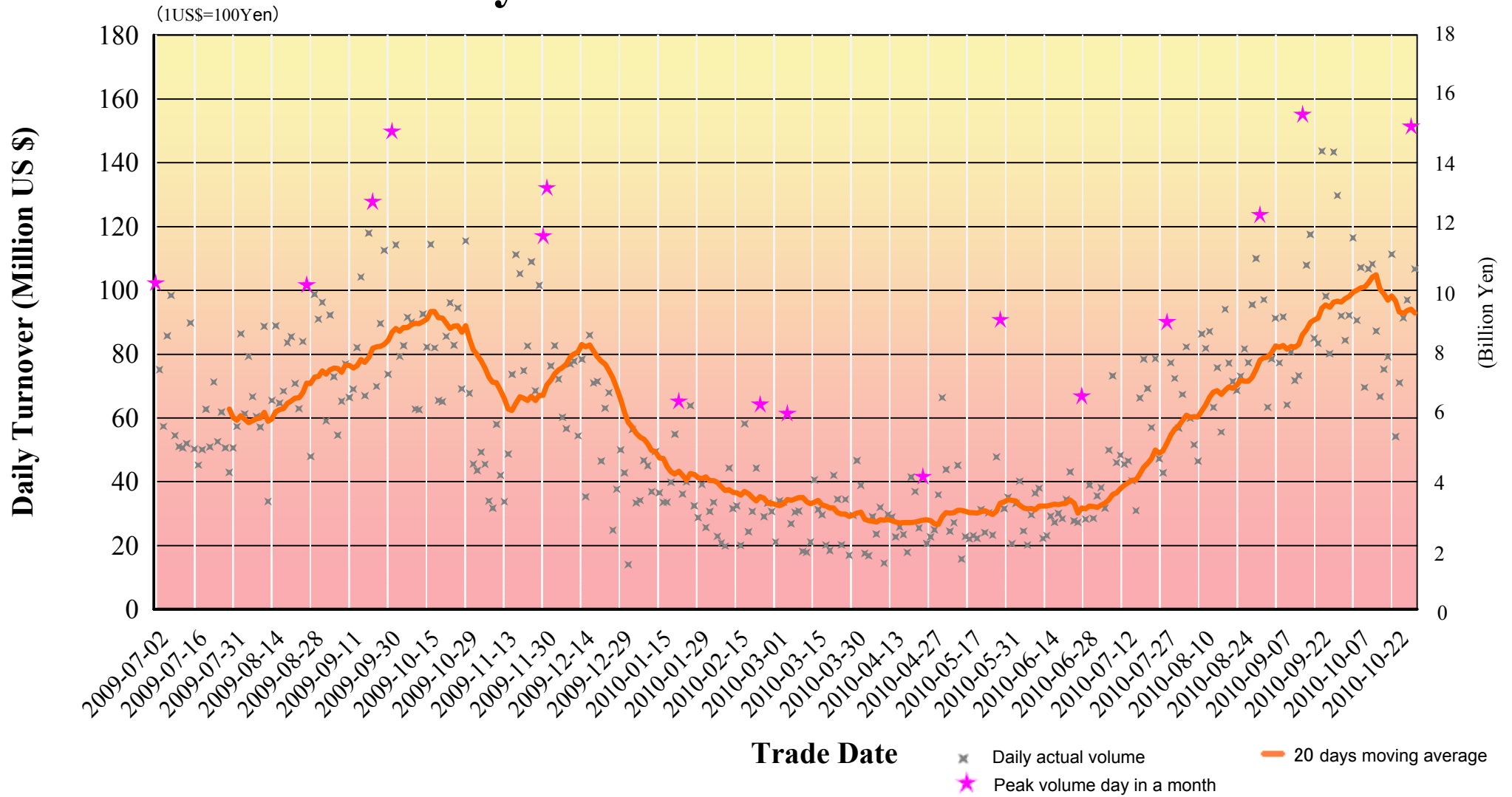
Japannext PTS

SBI Japannext Co., Ltd

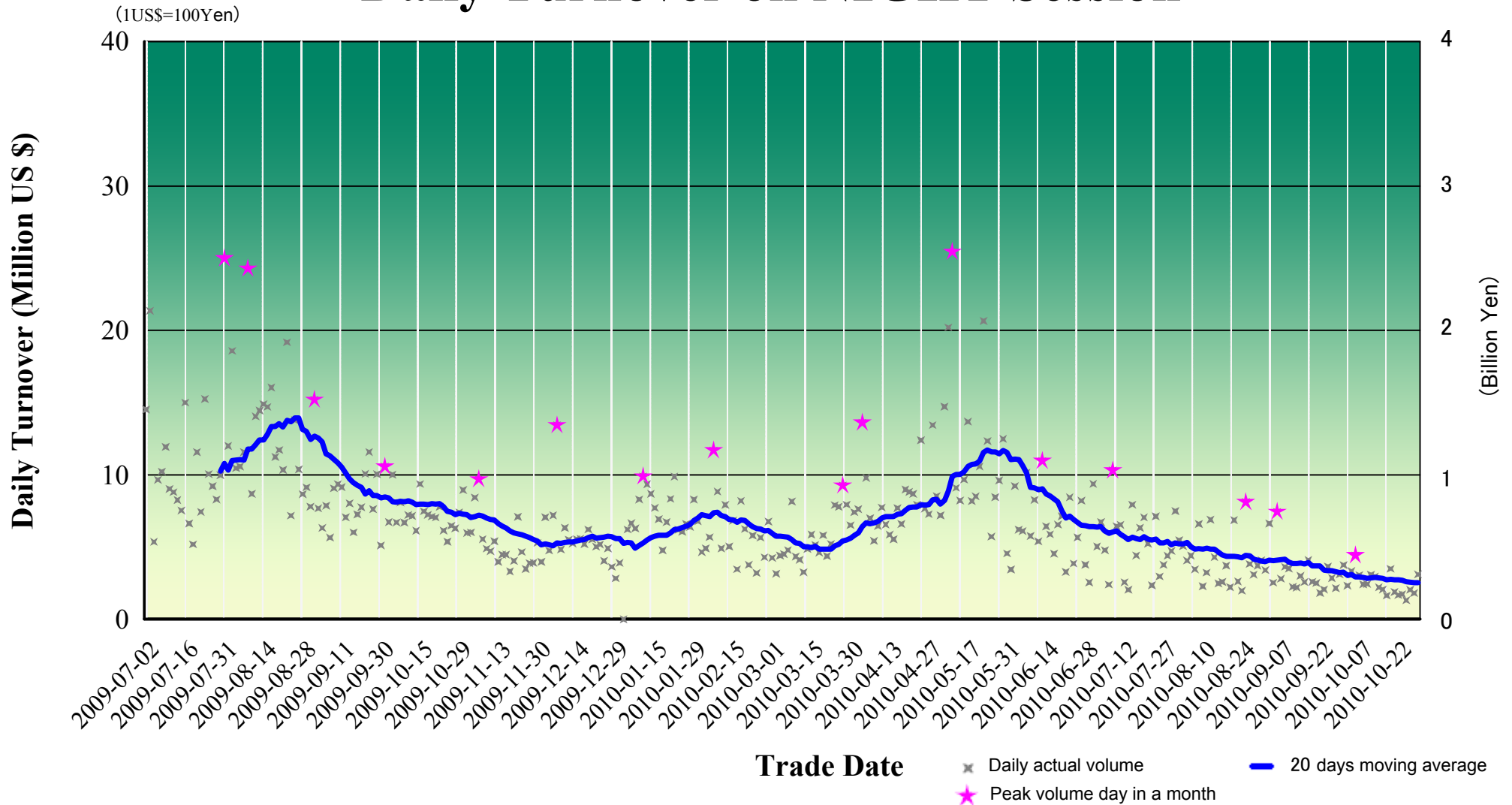
Disclaimer

Information provided is for reference purposes and does not constitute financial product advice nor is construed as an offer to sell or the solicitation of an offer to buy any security. The ownership and the intellectual property rights of this information solely and exclusively belong to SBI Japannext Co., Ltd. ("SBIJ"). Accordingly users are permitted to get an access and use of the Information for their own personal, non-commercial and internal-use-only. Although SBIJ has made every effort to ensure the accuracy of the information as at the date of publication, SBIJ does not give any warranty or representation as to the accuracy, reliability or completeness of the information. To the extent permitted by law, SBIJ and its employees, officers and contractors shall not be liable for any loss or damage arising in any way (including by way of negligence) from or in connection with any information provided or omitted or from any one acting or refraining to act in reliance on this information.

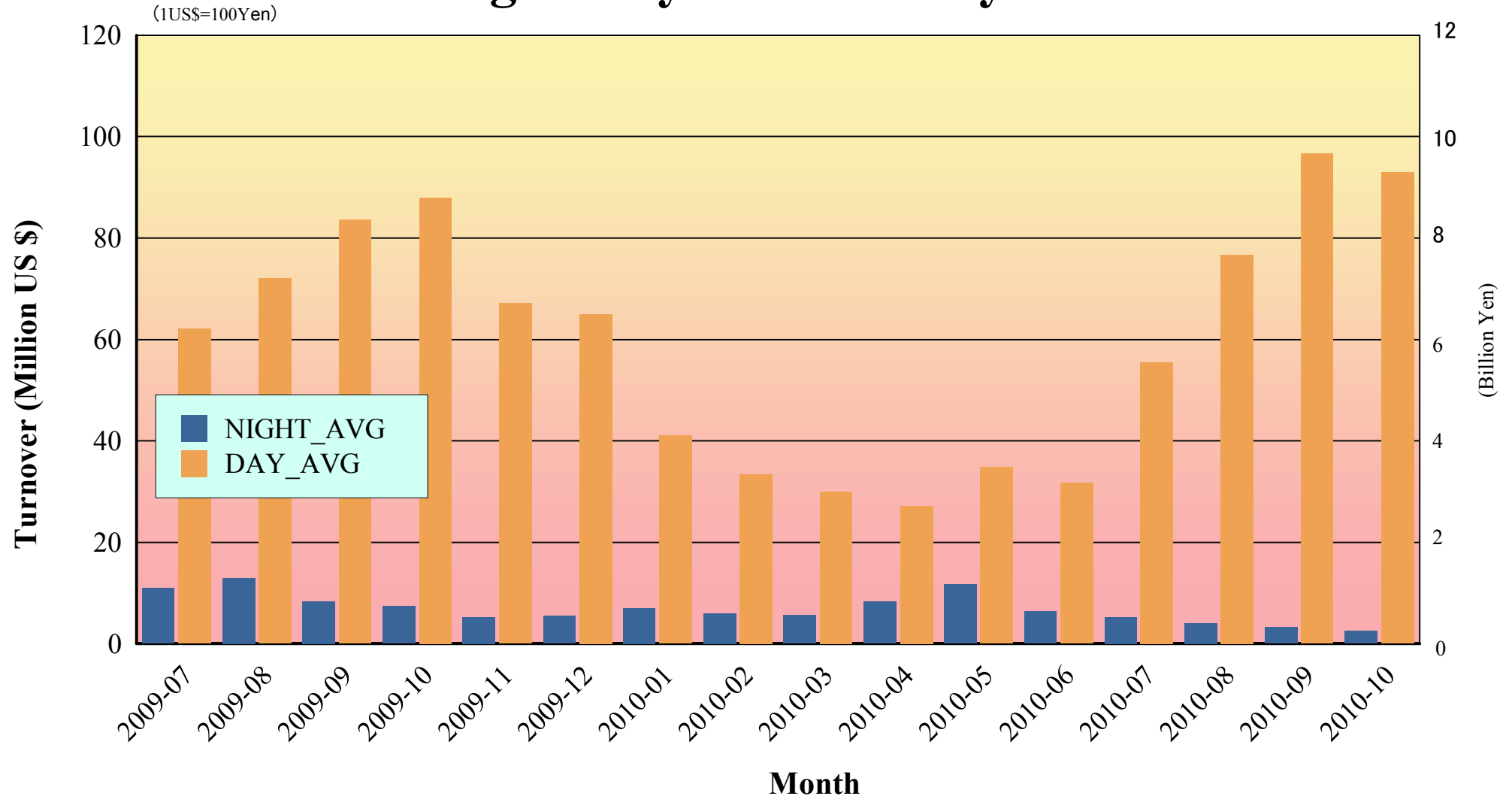
Daily Turnover on DAY Session



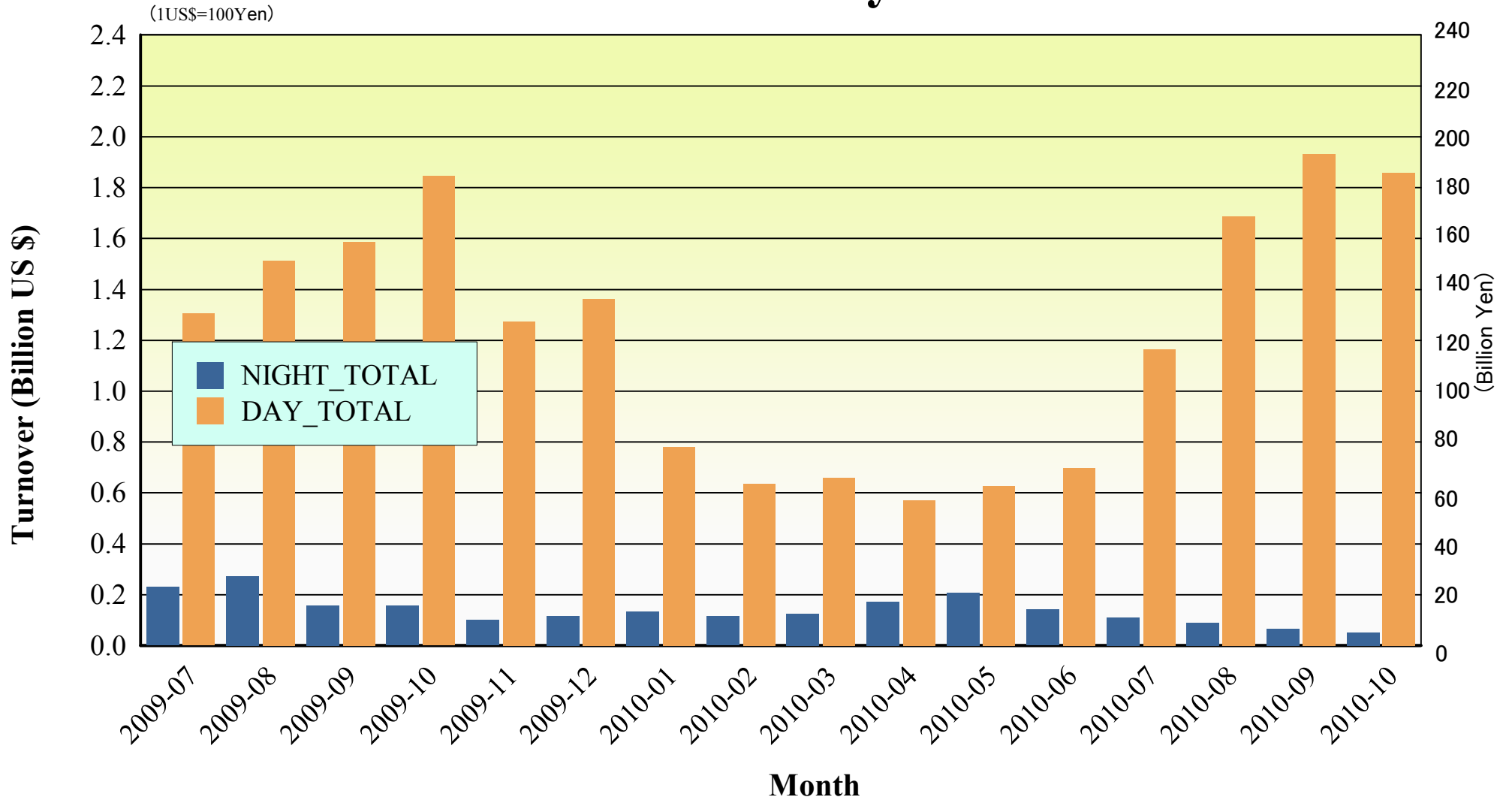
Daily Turnover on NIGHT Session



Average Daily Turnover by Month

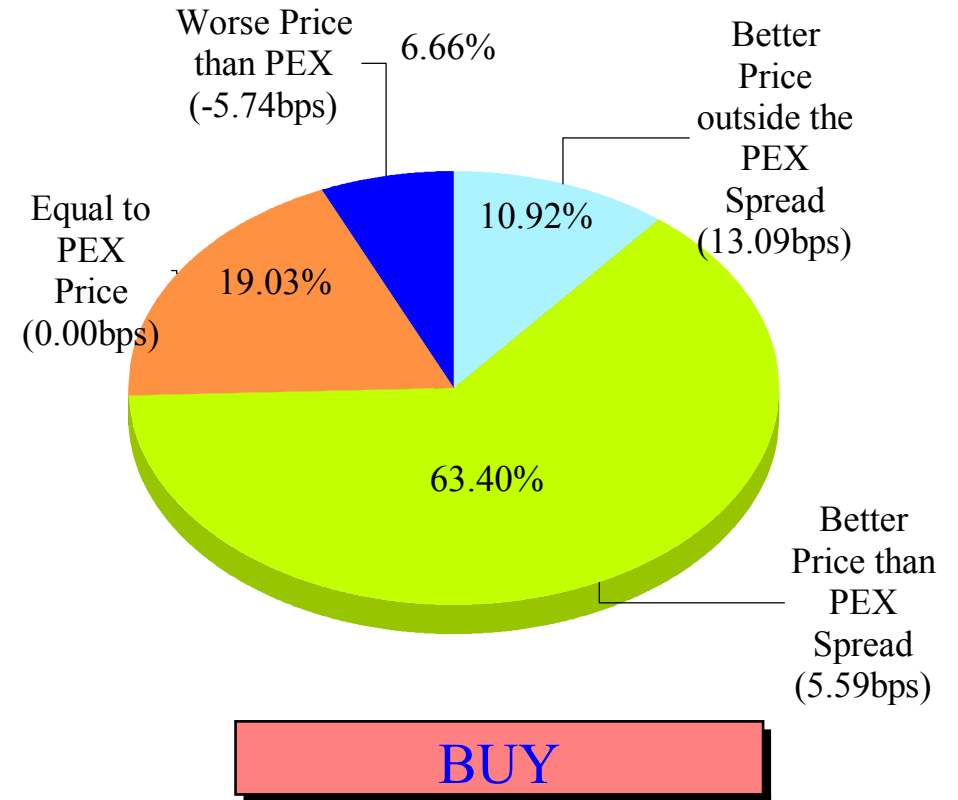
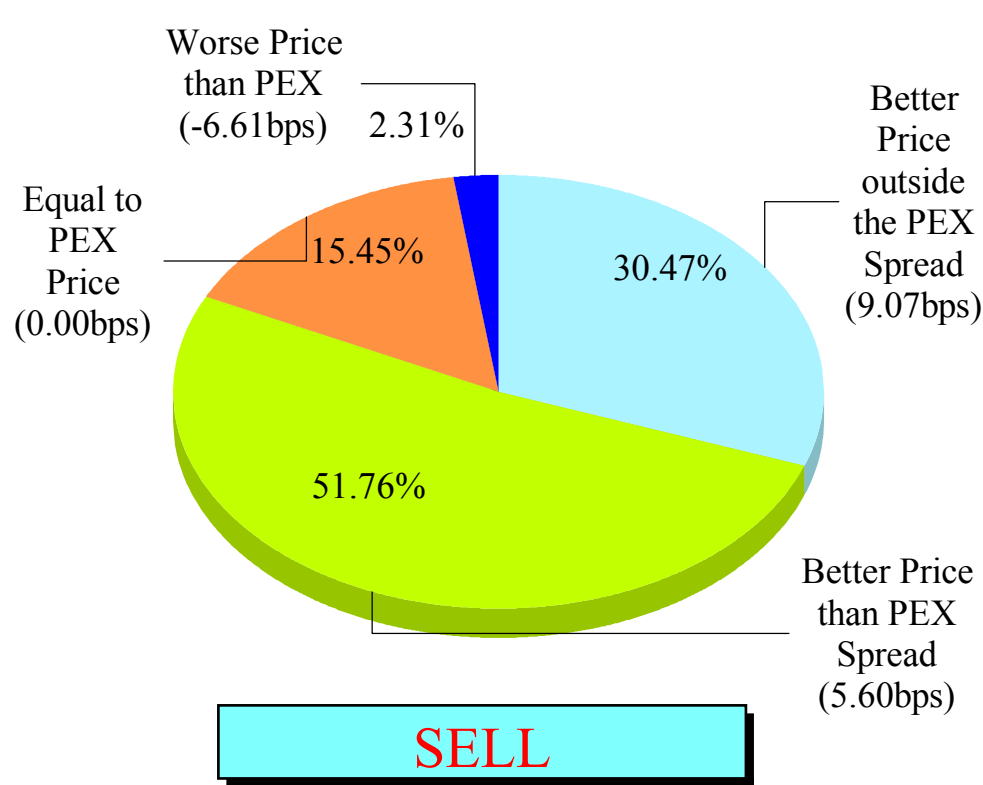


Total Turnover by Month



"Daytime Session" Execution

Nikkei 225 (Oct-2010)

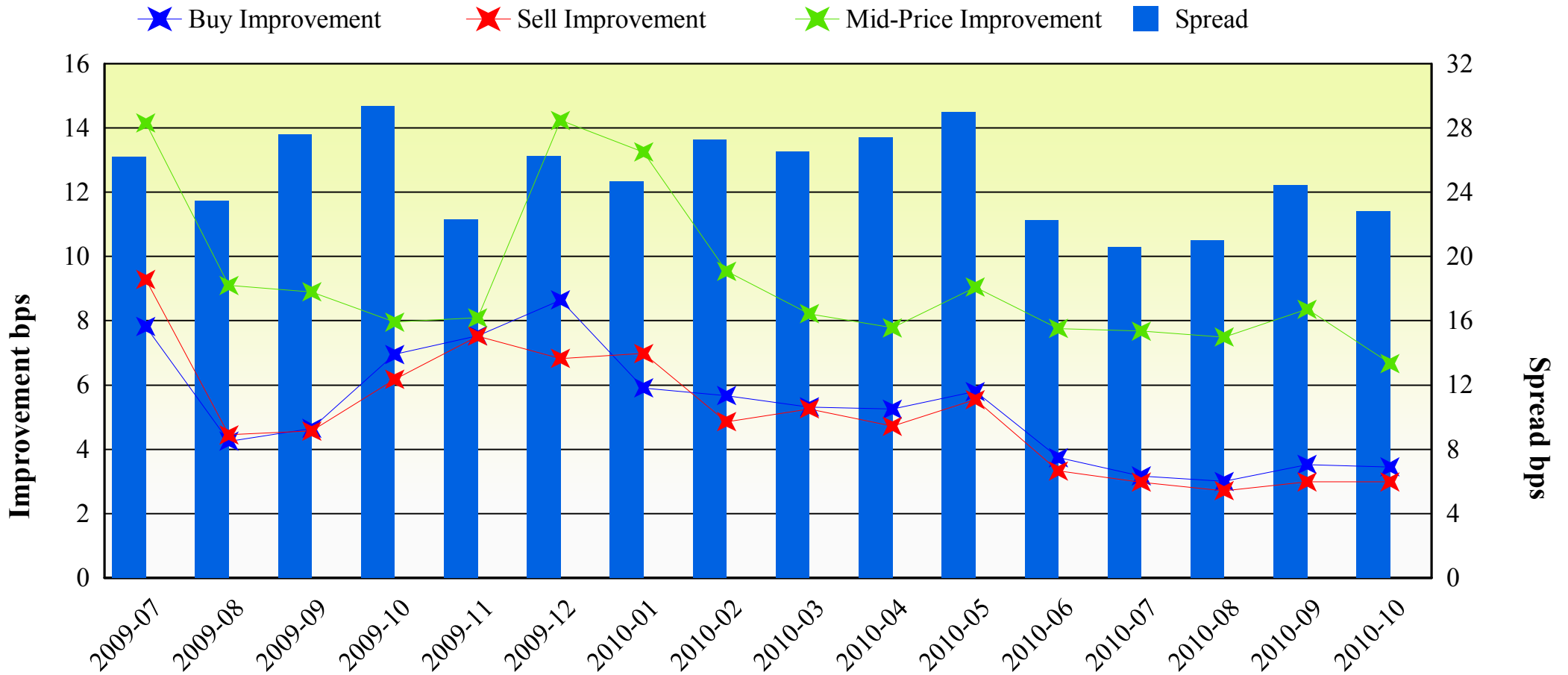


Note1: Excluded the executions from before 9AM, lunch break, and after 3PM

Note2: Avg. Price Improvement are based on Japannext vs. Primary Exchange prices

Improvement of Order (bps)

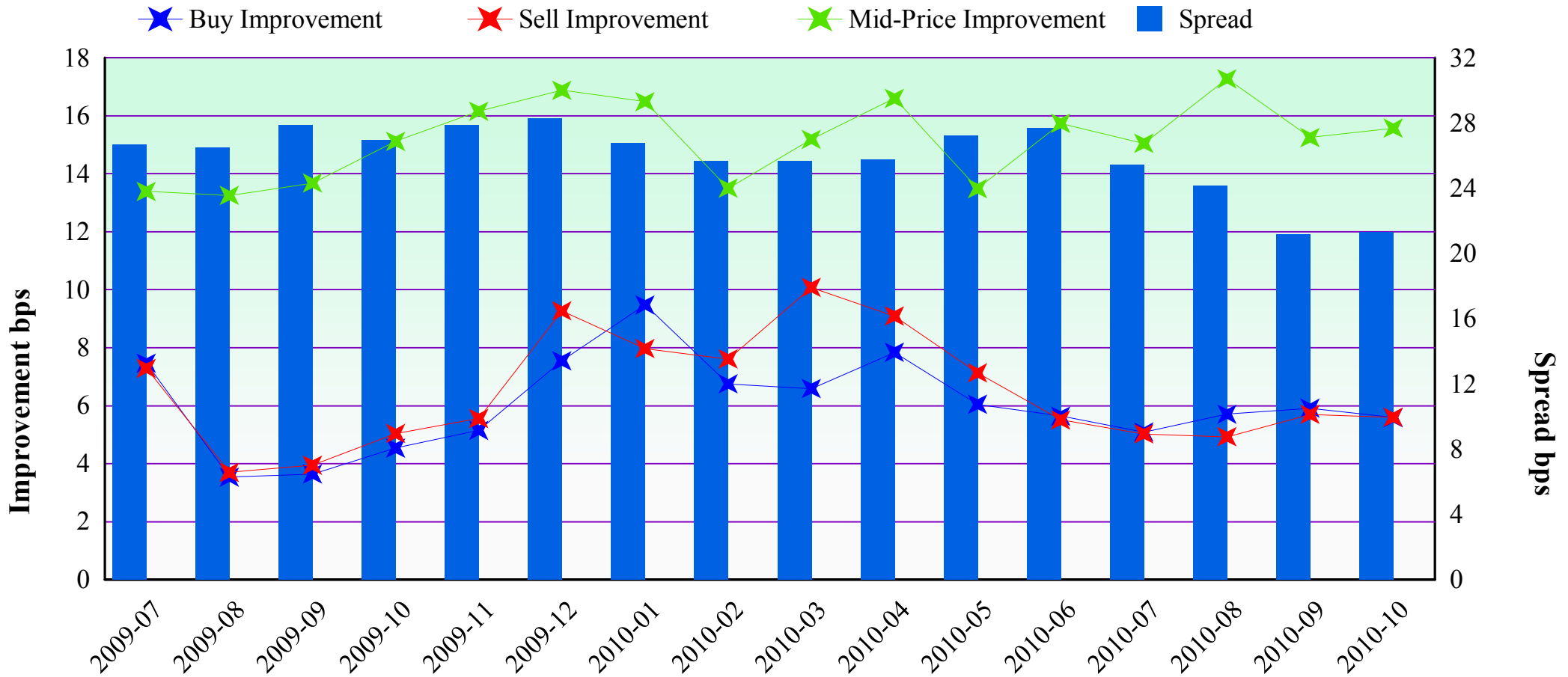
Nikkei 225 (Oct-2010)



Note1: Excluded the executions from before 9AM, lunch break, and after 3PM
 Note2: Avg. Price Improvements are based on Japannext vs. Primary Exchange prices

Improvement of Execution (bps)

Nikkei 225 (Oct-2010)



Note1: Excluded the executions from before 9AM, lunch break, and after 3PM

Note2: Avg. Price Improvements are based on Japannext vs. Primary Exchange prices

Day/Night Monthly Turnover for Top 25 Names

(DAY Session)

	SYMBOL	SYMBOL	TURNOVER (Million US\$ 1US\$=1Yen)	Market-share (%)
1	7203	TOYOTA MOTOR CORP.	67.52	1.31
2	8411	MIZUHO FINANCIAL GROUP, INC.	56.12	1.38
3	7751	CANON INC.	54.87	1.17
4	8316	SUMITOMO MITSUI FINANCIAL GROUP, INC.	50.26	0.87
5	8306	MITSUBISHI UFJ FINANCIAL GROUP, INC.	40.97	0.75
6	7974	NINTENDO CO., LTD.	30.21	1.19
7	8604	NOMURA HOLDINGS, INC.	29.69	0.63
8	8766	TOKIO MARINE HOLDINGS, INC.	26.77	1.83
9	7267	HONDA MOTOR CO., LTD.	25.68	0.76
10	6954	FANUC LTD.	25.21	0.66
11	9020	EAST JAPAN RAILWAY CO.	24.74	1.57
12	7201	NISSAN MOTOR CO., LTD.	23.20	0.75
13	6758	SONY CORP.	22.86	0.59
14	4502	TAKEDA PHARMACEUTICAL CO., LTD.	22.67	1.54
15	8058	MITSUBISHI CORP.	21.88	0.64
16	9432	NIPPON TELEGRAPH & TELEPHONE CORP.	18.22	1.11
17	9501	THE TOKYO ELECTRIC POWER CO., INC.	18.04	0.26
18	8031	MITSUMI & CO., LTD.	17.24	0.56
19	1605	INPEX CORP.	17.08	0.59
20	6502	TOSHIBA CORP.	16.83	0.55
21	8802	MITSUBISHI ESTATE CO., LTD.	15.87	0.71
22	4503	ASTELLAS PHARMA INC.	15.66	1.29
23	6501	HITACHI, LTD.	14.64	0.58
24	8801	MITSUMI FUDOSAN CO., LTD.	14.40	0.65
25	4063	SHIN-ETSU CHEMICAL CO., LTD.	14.39	0.67

(Oct-2010)

(NIGHT Session)

highlight : "Common" names for Day & NightTime

	SYMBOL	DESCRIPTION	TURNOVER (Million US\$ 1US\$=1Yen)
1	8411	MIZUHO FINANCIAL GROUP, INC.	6.54
2	8306	MITSUBISHI UFJ FINANCIAL GROUP, INC.	3.42
3	9501	THE TOKYO ELECTRIC POWER CO., INC.	2.53
4	7974	NINTENDO CO., LTD.	1.81
5	8316	SUMITOMO MITSUI FINANCIAL GROUP, INC.	1.80
6	7203	TOYOTA MOTOR CORP.	1.61
7	8058	MITSUBISHI CORP.	0.95
8	3236	PROPERST CO., LTD.	0.91
9	8604	NOMURA HOLDINGS, INC.	0.86
10	8031	MITSUMI & CO., LTD.	0.80
11	3859	SYNERGY MARKETING, INC.	0.78
12	1418	INTERLIFE HOLDINGS CO., LTD.	0.77
13	1321	NIKKEI 225 EXCHANGE TRADED FUND	0.64
14	6758	SONY CORP.	0.64
15	1801	TAISEI CORP.	0.60
16	4203	SUMITOMO BAKELITE CO., LTD.	0.54
17	6501	HITACHI, LTD.	0.52
18	8303	SHINSEI BANK, LTD.	0.47
19	6301	KOMATSU LTD.	0.46
20	6752	PANASONIC CORP.	0.46
21	6594	NIDEC CORP.	0.46
22	8815	TOKYU LAND CORP.	0.45
23	8804	TOKYO TATEMONO CO., LTD.	0.44
24	6502	TOSHIBA CORP.	0.43
25	8574	PROMISE CO., LTD.	0.42

Improvement of Monthly Turnover for Top 25 Names (Oct-2010)

(Daytime Session)

	RIC	NAME	Sell Executions							Improve Avg. BPS	Buy Executions							Improve Avg. BPS
			Worse(A)		Equal(B)		Better(C)		(B) + (C)		Worse(A)		Equal(B)		Better(C)		(B) + (C)	
1	7203.T	TOYOTA	362	4.02%	707	7.86%	7,929	88.12%	95.98%	5.21	1,170	30.72%	1,178	30.93%	1,461	38.36%	69.28%	4.44
2	8411.T	MIZUHO	8	0.15%	193	3.63%	5,123	96.22%	99.85%	30.11	3	0.06%	163	3.10%	5,092	96.84%	99.94%	30.26
3	7751.T	CANON	19	0.93%	231	11.33%	1,789	87.74%	99.07%	4.24	55	2.50%	418	18.99%	1,728	78.51%	97.50%	3.19
4	8316.T	SMFG	592	9.83%	253	4.20%	5,180	85.98%	90.17%	7.41	2,866	71.44%	256	6.38%	890	22.18%	28.56%	6.40
5	8306.T	MUFG	5	0.18%	355	12.78%	2,417	87.04%	99.82%	8.11	11	0.44%	526	21.03%	1,964	78.53%	99.56%	5.42
6	7974.OS	NINTEND	6	0.57%	51	4.82%	1,001	94.61%	99.43%	5.80	41	10.88%	68	18.04%	268	71.09%	89.12%	3.92
7	8604.T	NOMRAHD	9	0.34%	361	13.45%	2,314	86.21%	99.66%	4.42	21	0.68%	663	21.49%	2,401	77.83%	99.32%	6.04
8	8766.T	TOKIOMAR	295	3.95%	817	10.93%	6,360	85.12%	96.05%	5.29	1,218	33.86%	1,212	33.69%	1,167	32.44%	66.14%	4.93
9	7267.T	HONDA	183	7.42%	366	14.84%	1,918	77.75%	92.58%	4.65	188	9.41%	696	34.83%	1,114	55.76%	90.59%	4.02
10	6954.T	FANUC	25	3.89%	30	4.67%	587	91.43%	96.11%	2.41	27	3.95%	15	2.20%	641	93.85%	96.05%	2.59
11	9020.T	JR EAST	14	1.53%	60	6.55%	842	91.92%	98.47%	3.48	28	2.59%	61	5.64%	993	91.77%	97.41%	3.27
12	7201.T	NISSAN	11	0.52%	423	19.98%	1,683	79.50%	99.48%	4.11	21	1.02%	371	18.11%	1,657	80.87%	98.98%	3.17
13	6758.T	SONY	198	6.31%	486	15.48%	2,455	78.21%	93.69%	4.01	254	14.90%	608	35.66%	843	49.44%	85.10%	3.71
14	4502.T	TAKEDAP	6	0.62%	119	12.28%	844	87.10%	99.38%	2.83	12	1.27%	182	19.24%	752	79.49%	98.73%	3.26
15	8058.T	MITBISI	113	3.28%	528	15.34%	2,800	81.37%	96.72%	5.05	202	13.01%	520	33.48%	831	53.51%	86.99%	3.80
16	9432.T	NTT	15	1.48%	197	19.43%	802	79.09%	98.52%	4.02	5	0.57%	178	20.27%	695	79.16%	99.43%	3.20
17	9501.T	TEPCO	75	2.31%	389	11.98%	2,784	85.71%	97.69%	7.64	295	23.39%	252	19.98%	714	56.62%	76.61%	6.18
18	8031.T	mitsui	17	0.76%	489	21.74%	1,743	77.50%	99.24%	6.05	21	2.06%	491	48.14%	508	49.80%	97.94%	4.01
19	1605.T	INPEX	6	0.93%	87	13.47%	553	85.60%	99.07%	3.20	14	1.41%	146	14.75%	830	83.84%	98.59%	1.69
20	6502.T	TOSHIBA	0	0.00%	70	8.38%	765	91.62%	100.00%	5.80	1	0.11%	118	12.46%	828	87.43%	99.89%	4.92
21	8802.T	MTB-EST	82	11.95%	66	9.62%	538	78.43%	88.05%	4.30	32	8.23%	85	21.85%	272	69.92%	91.77%	3.52
22	4503.T	ASTELLAS	6	0.51%	188	15.88%	990	83.61%	99.49%	2.38	31	3.90%	135	17.00%	628	79.09%	96.10%	3.40
23	6501.T	HITACHI	2	0.24%	67	8.14%	754	91.62%	99.76%	5.41	3	0.38%	123	15.51%	667	84.11%	99.62%	5.76
24	8801.T	MTI-FU	42	7.57%	113	20.36%	400	72.07%	92.43%	5.98	26	6.93%	101	26.93%	248	66.13%	93.07%	4.56
25	4063.T	SINETUC	5	0.87%	81	14.01%	492	85.12%	99.13%	3.07	6	0.77%	155	19.82%	621	79.41%	99.23%	2.78

Note1: Excluded the executions from before 9AM, lunch break, and after 3PM

Note2: Avg. Price Improvement are based on Japannext vs. Primary Exchange prices