

# Monthly Statistics

Dec-2010

*Japannext PTS*

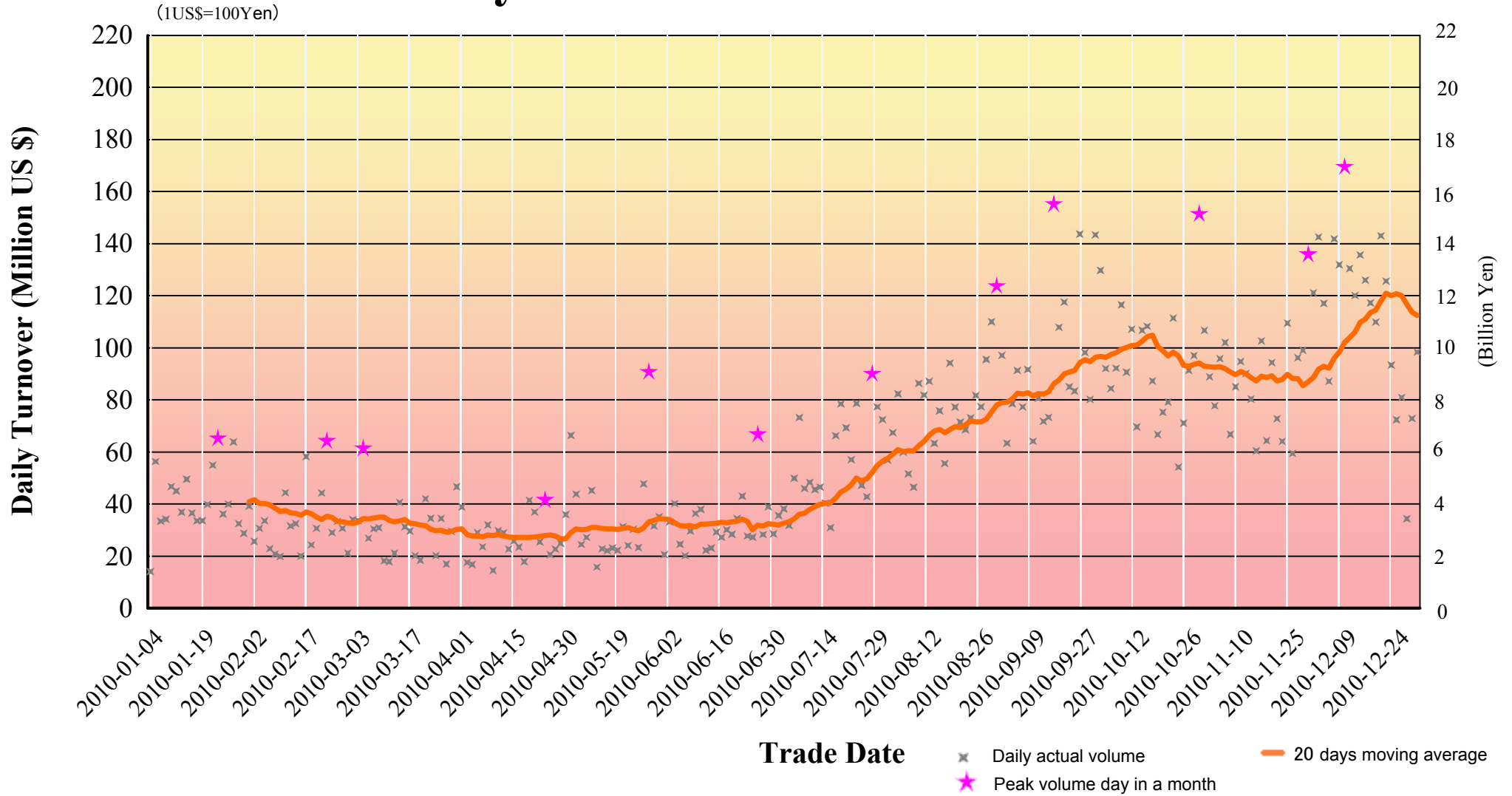
---

*SBI Japannext Co., Ltd*

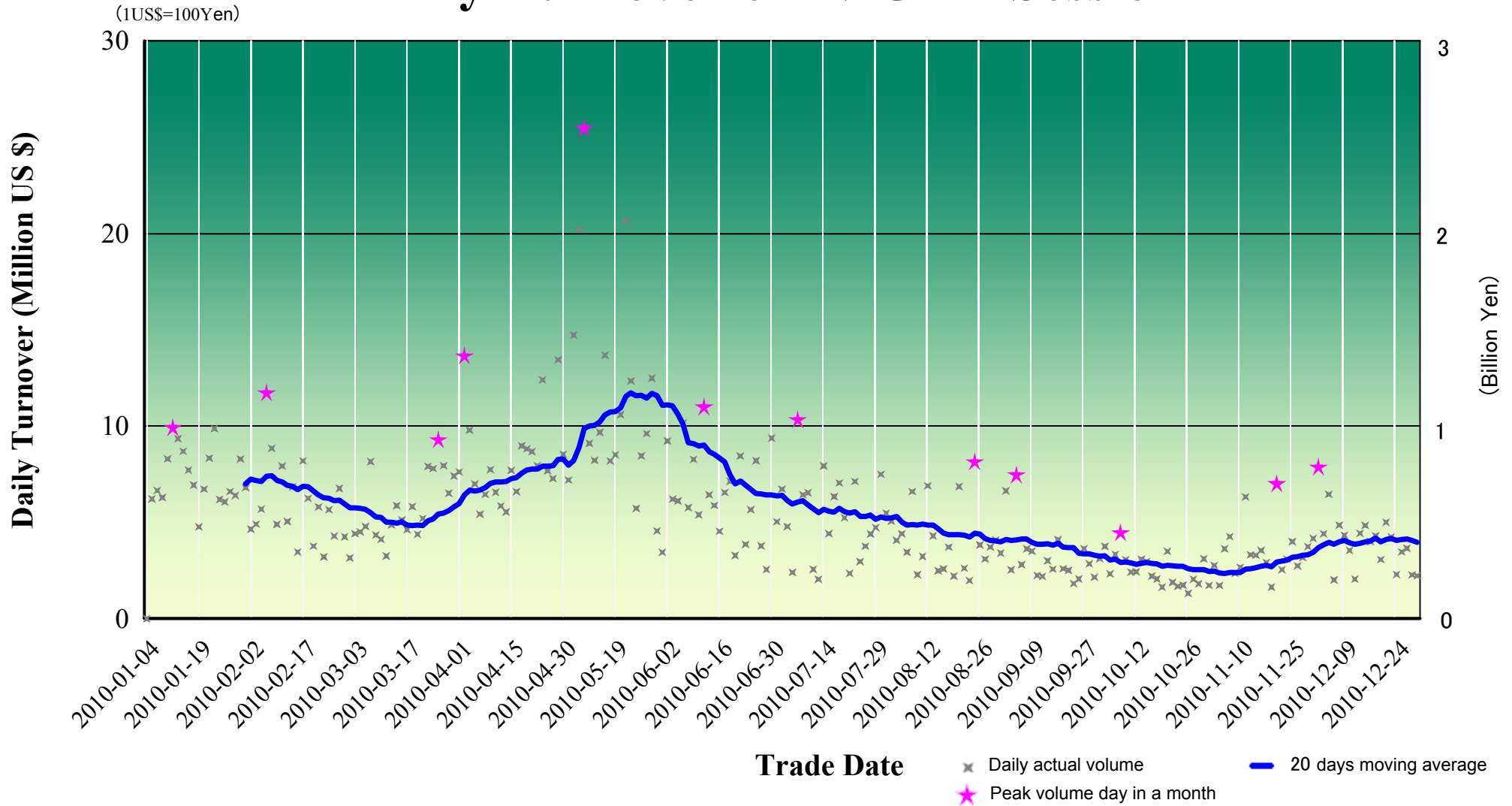
**Disclaimer**

Information provided is for reference purposes and does not constitute financial product advice nor is construed as an offer to sell or the solicitation of an offer to buy any security. The ownership and the intellectual property rights of this information solely and exclusively belong to SBI Japannext Co.,Ltd. (“SBIJ”). Accordingly users are permitted to get an access and use of the Information for their own personal, non-commercial and internal-use-only. Although SBIJ has made every effort to ensure the accuracy of the information as at the date of publication, SBIJ does not give any warranty or representation as to the accuracy, reliability or completeness of the information. To the extent permitted by law, SBIJ and its employees, officers and contractors shall not be liable for any loss or damage arising in any way (including by way of negligence) from or in connection with any information provided or omitted or from any one acting or refraining to act in reliance on this information.

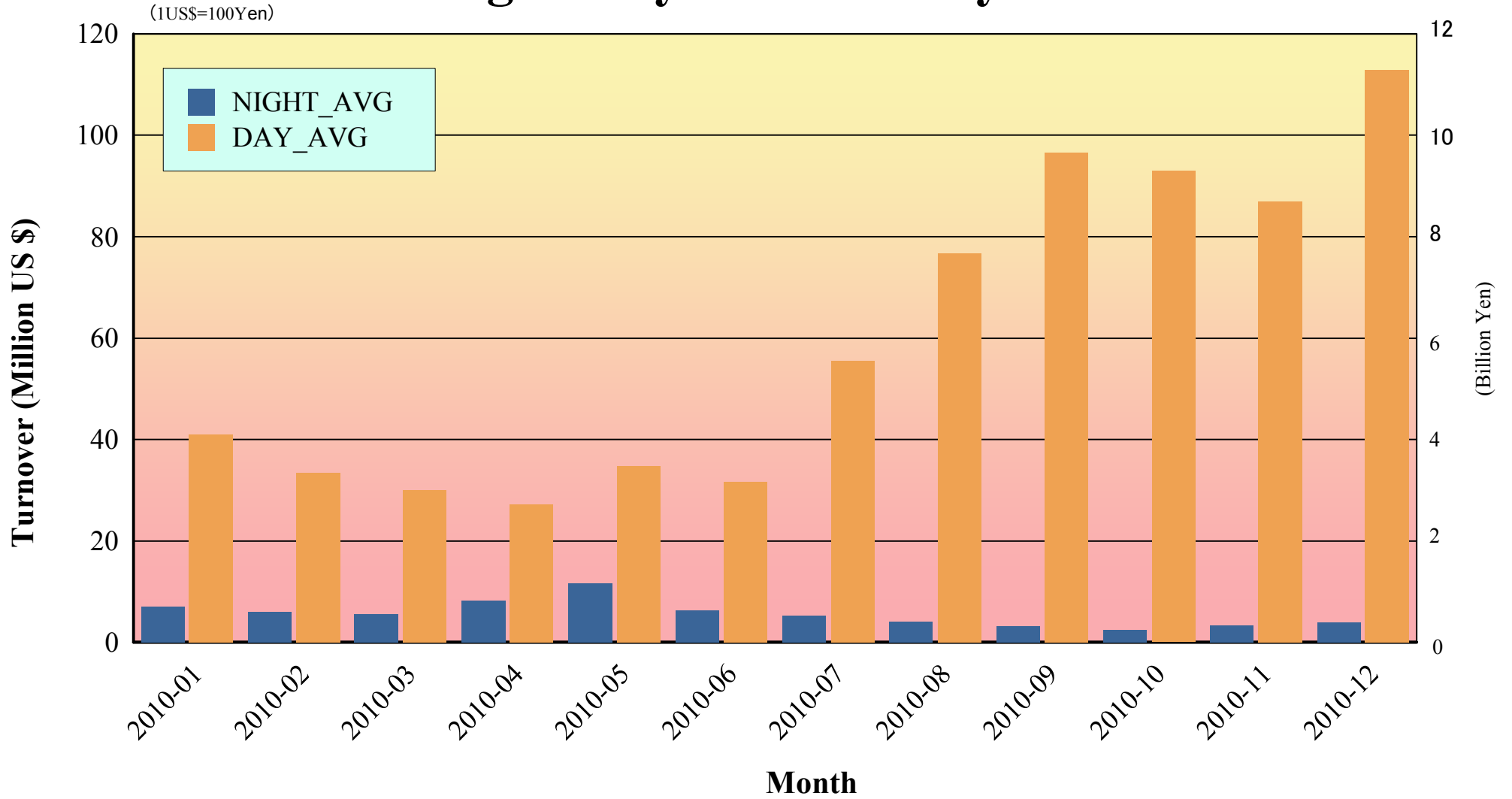
# Daily Turnover on DAY Session



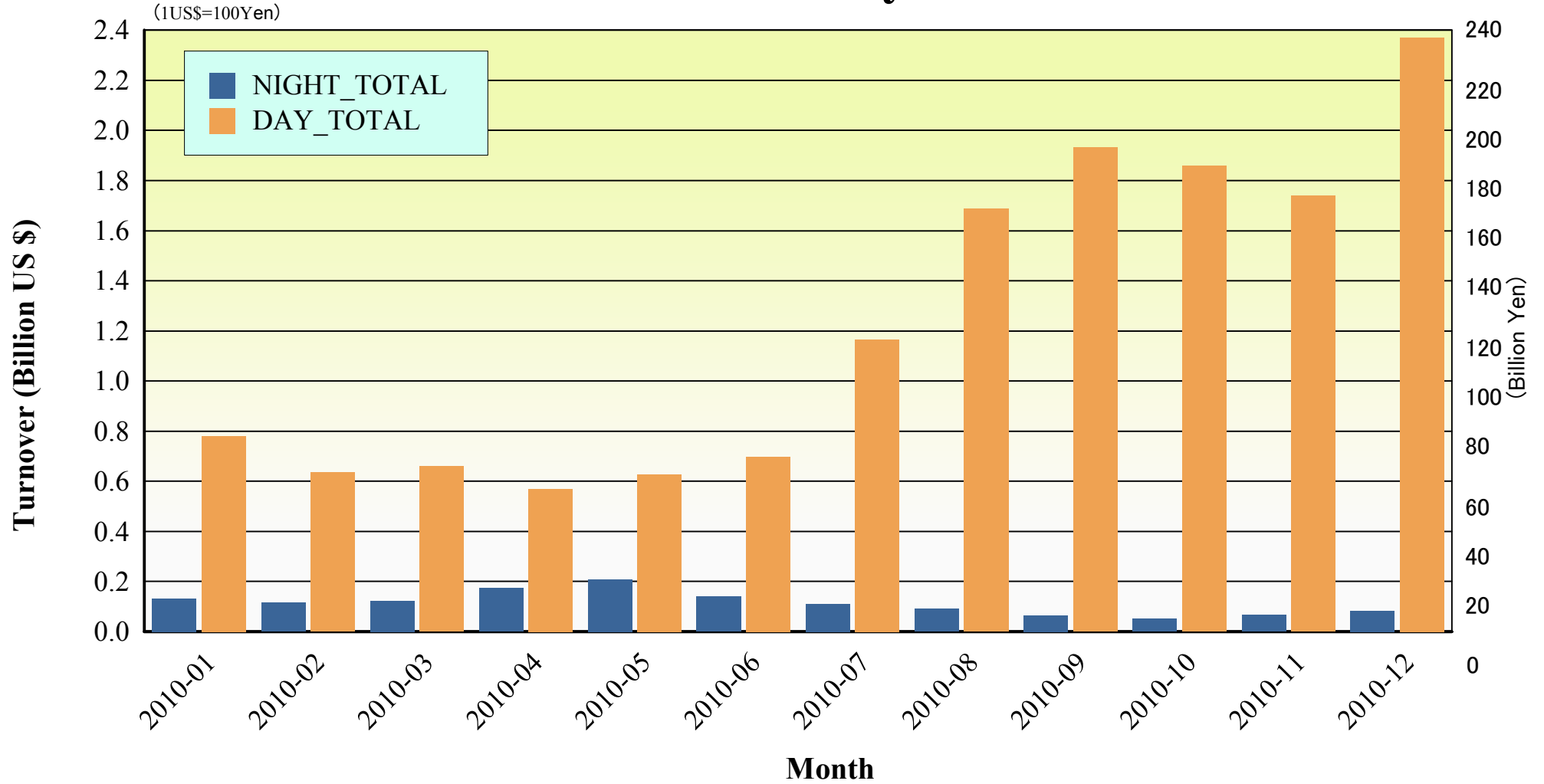
# Daily Turnover on NIGHT Session



# Average Daily Turnover by Month

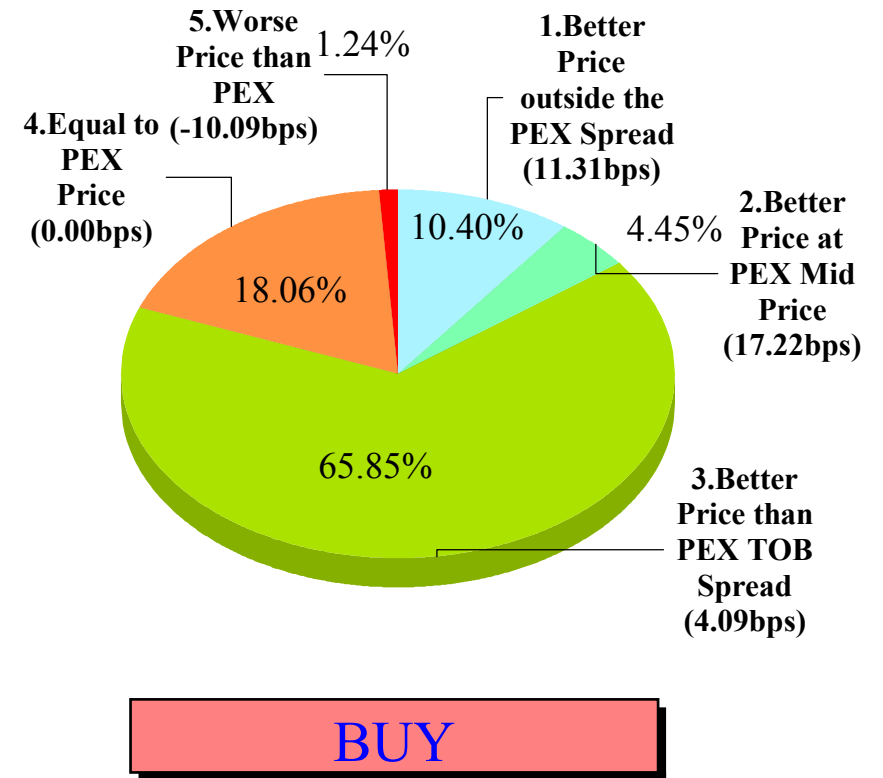
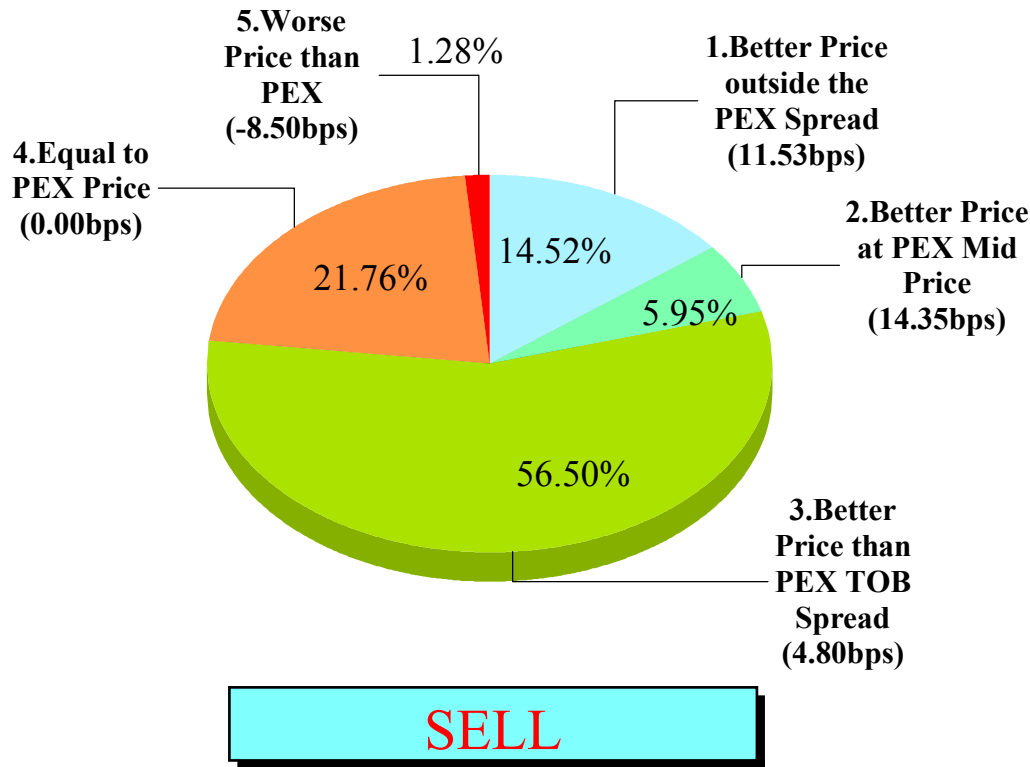


# Total Turnover by Month



# "Daytime Session" Execution

**Nikkei 225 ( Dec-2010 )**

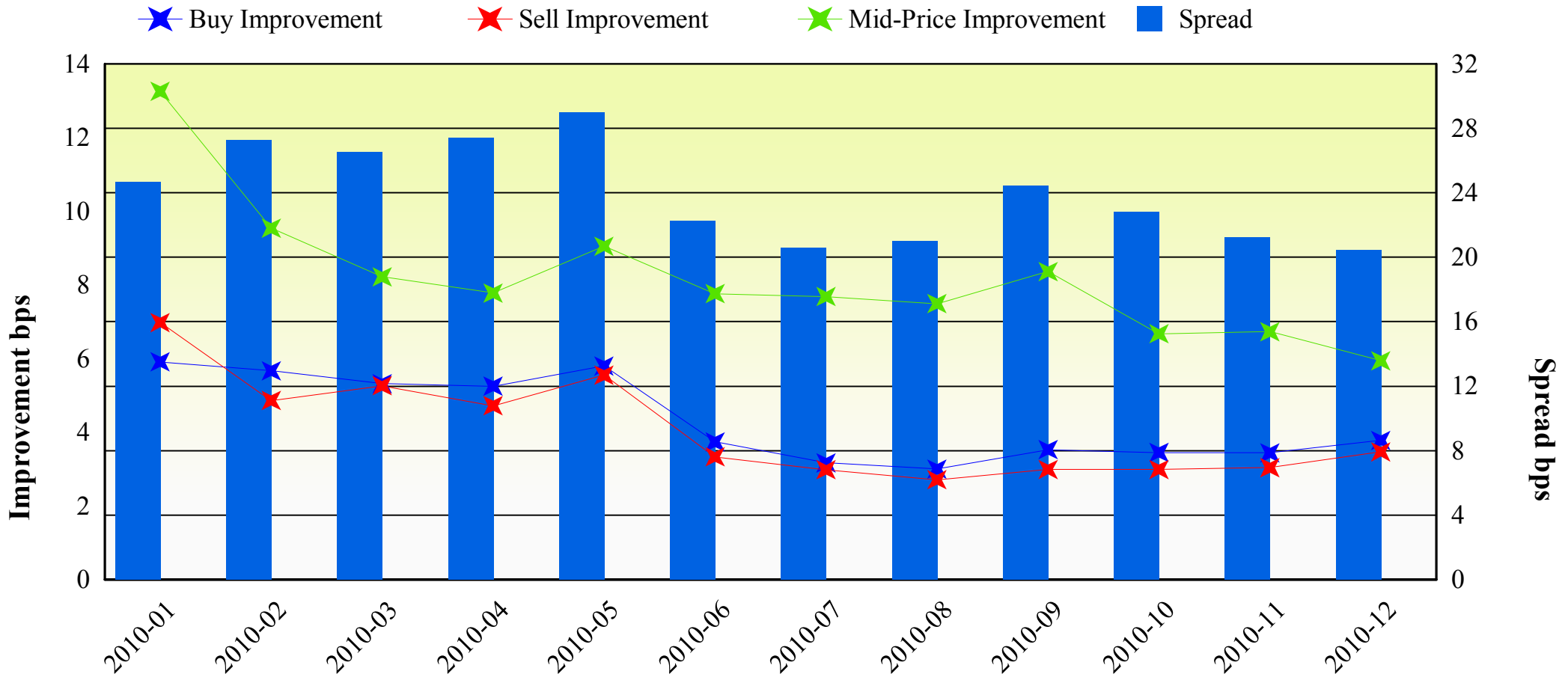


Note1: Excluded the executions from before 9AM, lunch break, and after 3PM

Note2: Avg. Price Improvement are based on Japannext vs. Primary Exchange prices

## Improvement of Order (bps)

**Nikkei 225 ( Dec-2010 )**



Note1: Excluded the executions from before 9AM, lunch break, and after 3PM  
 Note2: Avg. Price Improvements are based on Japannext vs. Primary Exchange prices

## Improvement of Execution (bps)

**Nikkei 225 ( Dec-2010 )**



Note1: Excluded the executions from before 9AM, lunch break, and after 3PM

Note2: Avg. Price Improvements are based on Japannext vs. Primary Exchange prices



## Day/Night Monthly Turnover for Top 25 Names

(DAY Session)

	SYMBOL	SYMBOL	TURNOVER (Million US\$ 1US\$=100Yen)	Market-share (%)
1	8411	MIZUHO FINANCIAL GROUP, INC.	120.19	2.64
2	7203	TOYOTA MOTOR CORP.	82.98	1.57
3	8306	MITSUBISHI UFJ FINANCIAL GROUP, INC.	77.40	1.35
4	7267	HONDA MOTOR CO., LTD.	56.54	1.71
5	8604	NOMURA HOLDINGS, INC.	54.15	1.55
6	8316	SUMITOMO MITSUI FINANCIAL GROUP, INC.	50.12	0.69
7	9432	NIPPON TELEGRAPH & TELEPHONE CORP.	44.14	1.76
8	7751	CANON INC.	42.70	1.21
9	4502	TAKEDA PHARMACEUTICAL CO., LTD.	35.70	1.84
10	7201	NISSAN MOTOR CO., LTD.	31.89	1.27
11	9501	THE TOKYO ELECTRIC POWER CO., INC.	25.80	1.21
12	9433	KDDI CORP.	25.53	1.24
13	6971	KYOCERA CORP.	21.62	1.21
14	9020	EAST JAPAN RAILWAY CO.	19.92	1.36
15	8058	MITSUBISHI CORP.	19.70	0.72
16	8031	MITSUMI & CO., LTD.	19.50	0.78
17	8035	TOKYO ELECTRON LTD.	19.33	1.20
18	6762	TDK CORP.	19.18	1.19
19	4503	ASTELLAS PHARMA INC.	18.64	1.74
20	6758	SONY CORP.	18.32	0.53
21	9984	SOFTBANK CORP.	17.80	0.40
22	4063	SHIN-ETSU CHEMICAL CO., LTD.	17.57	1.00
23	8591	ORIX CORP.	17.52	1.05
24	6702	FUJITSU LTD.	17.44	1.27
25	6501	HITACHI, LTD.	17.25	0.63

( Dec-2010 )

(NIGHT Session)

highlight : "Common" names for Day & NightTime

	SYMBOL	DESCRIPTION	TURNOVER (Million US\$ 1US\$=100Yen)
1	8411	MIZUHO FINANCIAL GROUP, INC.	9.48
2	8306	MITSUBISHI UFJ FINANCIAL GROUP, INC.	4.52
3	3859	SYNERGY MARKETING, INC.	3.15
4	8316	SUMITOMO MITSUI FINANCIAL GROUP, INC.	2.66
5	7203	TOYOTA MOTOR CORP.	1.58
6	6758	SONY CORP.	1.36
7	2342	TRANS GENIC INC.	1.33
8	6050	E-GUARDIAN INC.	1.26
9	5406	KOBE STEEL, LTD.	1.22
10	6501	HITACHI, LTD.	1.22
11	9424	JAPAN COMMUNICATIONS INC.	1.19
12	4240	CLUSTER TECHNOLOGY CO., LTD.	1.18
13	2432	DENA CO., LTD.	1.11
14	9501	THE TOKYO ELECTRIC POWER CO., INC.	1.05
15	8058	MITSUBISHI CORP.	1.04
16	7974	NINTENDO CO., LTD.	0.96
17	7751	CANON INC.	0.95
18	4578	OTSUKA HOLDINGS CO., LTD.	0.95
19	7267	HONDA MOTOR CO., LTD.	0.93
20	3858	UBIQUITOUS CORP.	0.85
21	6301	KOMATSU LTD.	0.85
22	8303	SHINSEI BANK, LTD.	0.81
23	9984	SOFTBANK CORP.	0.81
24	8604	NOMURA HOLDINGS, INC.	0.75
25	4848	FULLCAST HOLDINGS CO., LTD.	0.68

## Improvement of Monthly Turnover for Top 25 Names ( Dec-2010 )

(Daytime Session)

	RIC	NAME	Sell Executions							Improve Avg. BPS	Buy Executions							Improve Avg. BPS
			Worse(A)		Equal(B)		Better(C)		(B) + (C)		Worse(A)		Equal(B)		Better(C)		(B) + (C)	
1	8411.T	MIZUHO	2	0.04%	104	2.04%	5,001	97.92%	99.96%	31.18	3	0.05%	236	3.61%	6,290	96.34%	99.95%	24.35
2	7203.T	TOYOTA	8	0.60%	160	12.08%	1,156	87.31%	99.40%	3.66	5	0.24%	124	6.02%	1,931	93.74%	99.76%	3.47
3	8306.T	MUFG	0	0.00%	417	10.61%	3,514	89.39%	100.00%	5.85	5	0.17%	685	22.73%	2,323	77.10%	99.83%	5.98
4	7267.T	HONDA	0	0.00%	119	6.64%	1,674	93.36%	100.00%	2.76	0	0.00%	179	9.56%	1,694	90.44%	100.00%	2.82
5	8604.T	NOMRAHD	18	0.55%	345	10.55%	2,906	88.90%	99.45%	5.46	7	0.14%	393	7.86%	4,598	92.00%	99.86%	3.63
6	8316.T	SMFG	222	9.29%	669	28.00%	1,498	62.70%	90.71%	3.85	257	8.83%	571	19.62%	2,082	71.55%	91.17%	3.69
7	9432.T	NTT	12	0.81%	338	22.82%	1,131	76.37%	99.19%	4.17	7	0.27%	96	3.74%	2,465	95.99%	99.73%	2.74
8	7751.T	CANON	6	0.55%	190	17.51%	889	81.94%	99.45%	4.67	8	0.48%	213	12.76%	1,448	86.76%	99.52%	2.79
9	4502.T	TAKEDAP	4	0.44%	130	14.43%	767	85.13%	99.56%	3.39	13	0.78%	141	8.43%	1,519	90.79%	99.22%	2.60
10	7201.T	NISSAN	14	0.42%	406	12.18%	2,914	87.40%	99.58%	3.91	24	0.69%	578	16.70%	2,860	82.61%	99.31%	3.70
11	9501.T	TEPCO	13	0.86%	626	41.65%	864	57.49%	99.14%	4.06	5	0.31%	482	30.24%	1,107	69.45%	99.69%	4.05
12	9433.T	KDDI	14	2.07%	41	6.07%	620	91.85%	97.93%	2.20	17	1.65%	17	1.65%	995	96.70%	98.35%	1.51
13	6971.T	KYOCERA	8	1.45%	36	6.51%	509	92.04%	98.55%	2.03	2	0.32%	32	5.17%	585	94.51%	99.68%	1.78
14	9020.T	JR EAST	7	1.03%	72	10.62%	599	88.35%	98.97%	4.46	3	0.31%	122	12.56%	846	87.13%	99.69%	2.57
15	8058.T	MITBISI	22	1.52%	602	41.69%	820	56.79%	98.48%	3.34	14	1.12%	503	40.11%	737	58.77%	98.88%	3.38
16	8031.T	mitsui	4	0.20%	1,058	53.03%	933	46.77%	99.80%	5.26	12	0.62%	943	48.48%	990	50.90%	99.38%	5.51
17	8035.T	TKOELCN	22	3.50%	72	11.45%	535	85.06%	96.50%	4.85	2	0.26%	70	8.94%	711	90.80%	99.74%	3.13
18	6762.T	TDK	0	0.00%	16	4.40%	348	95.60%	100.00%	3.49	11	1.90%	16	2.77%	551	95.33%	98.10%	2.15
19	4503.T	ASTELLAS	4	0.56%	70	9.89%	634	89.55%	99.44%	3.44	10	0.97%	79	7.68%	939	91.34%	99.03%	2.60
20	6758.T	SONY	43	3.81%	508	44.96%	579	51.24%	96.19%	4.80	43	3.01%	638	44.62%	749	52.38%	96.99%	3.22
21	9984.T	SOFTBNK	19	1.91%	345	34.60%	633	63.49%	98.09%	3.56	24	2.32%	429	41.41%	583	56.27%	97.68%	3.32
22	4063.T	SINETUC	15	1.98%	82	10.83%	660	87.19%	98.02%	3.16	1	0.12%	157	18.92%	672	80.96%	99.88%	2.69
23	8591.T	ORIX	6	0.39%	312	20.04%	1,239	79.58%	99.61%	4.49	14	0.73%	260	13.53%	1,647	85.74%	99.27%	2.67
24	6702.T	FUJITSU	2	0.39%	56	10.83%	459	88.78%	99.61%	3.51	1	0.15%	64	9.38%	617	90.47%	99.85%	4.08
25	6501.T	HITACHI	0	0.00%	60	6.83%	818	93.17%	100.00%	6.41	0	0.00%	84	9.38%	812	90.63%	100.00%	6.49

Note1: Excluded the executions from before 9AM, lunch break, and after 3PM

Note2: Avg. Price Improvement are based on Japannext vs. Primary Exchange prices