

Monthly Statistics

Feb-2011

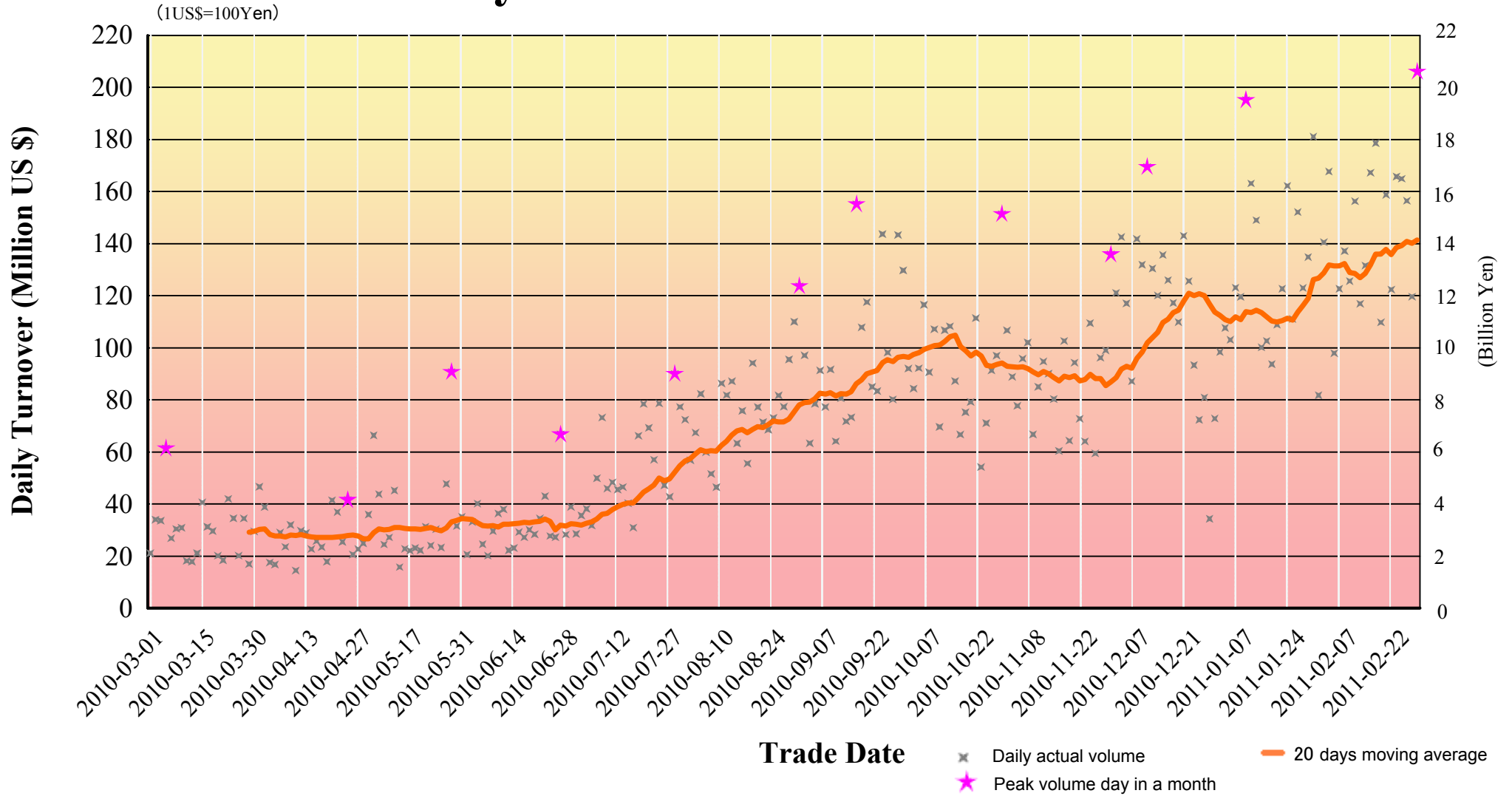
Japannext PTS

SBI Japannext Co., Ltd

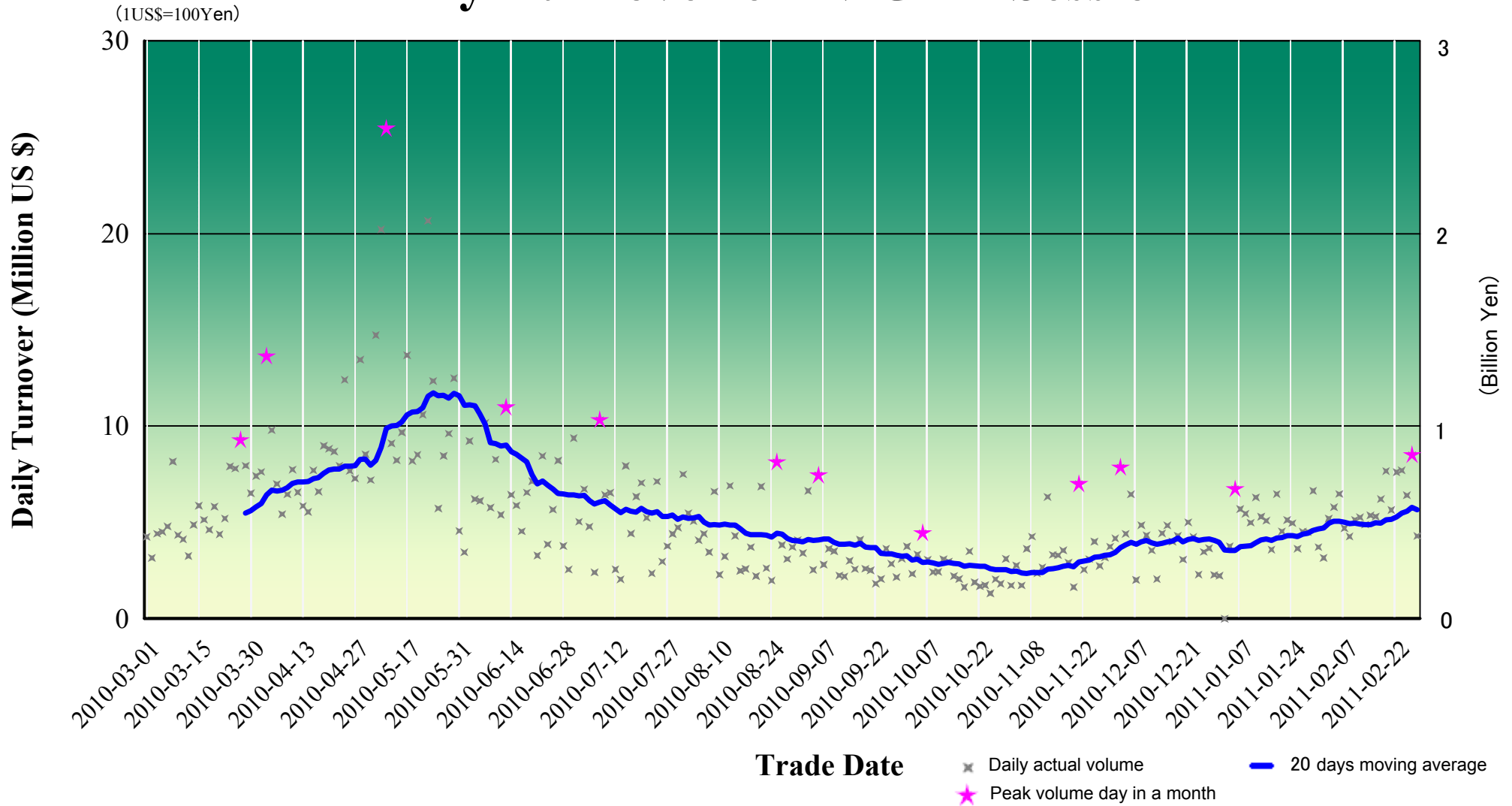
Disclaimer

Information provided is for reference purposes and does not constitute financial product advice nor is construed as an offer to sell or the solicitation of an offer to buy any security. The ownership and the intellectual property rights of this information solely and exclusively belong to SBI Japannext Co.,Ltd. (“SBIJ”). Accordingly users are permitted to get an access and use of the Information for their own personal, non-commercial and internal-use-only. Although SBIJ has made every effort to ensure the accuracy of the information as at the date of publication, SBIJ does not give any warranty or representation as to the accuracy, reliability or completeness of the information. To the extent permitted by law, SBIJ and its employees, officers and contractors shall not be liable for any loss or damage arising in any way (including by way of negligence) from or in connection with any information provided or omitted or from any one acting or refraining to act in reliance on this information.

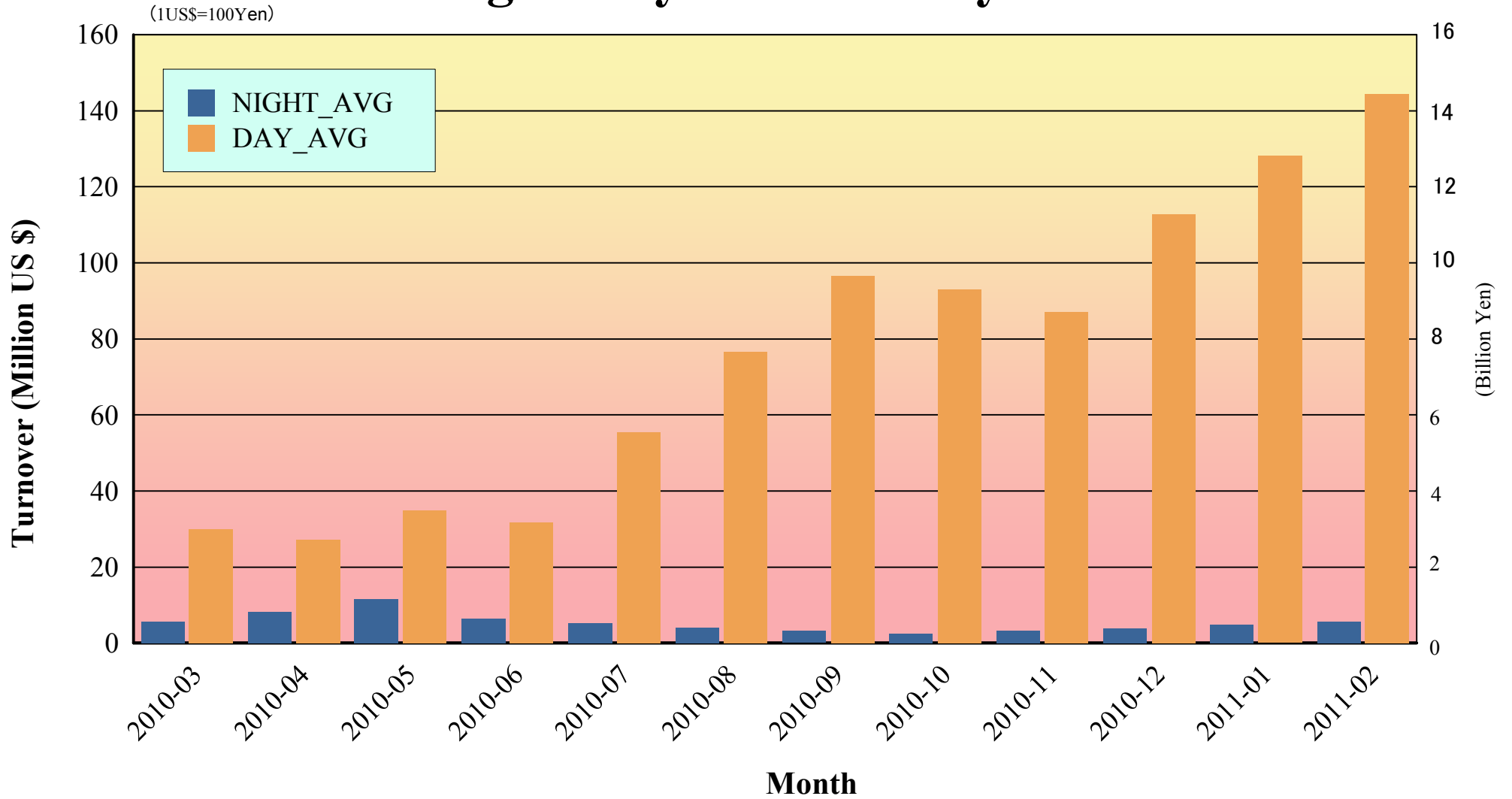
Daily Turnover on DAY Session



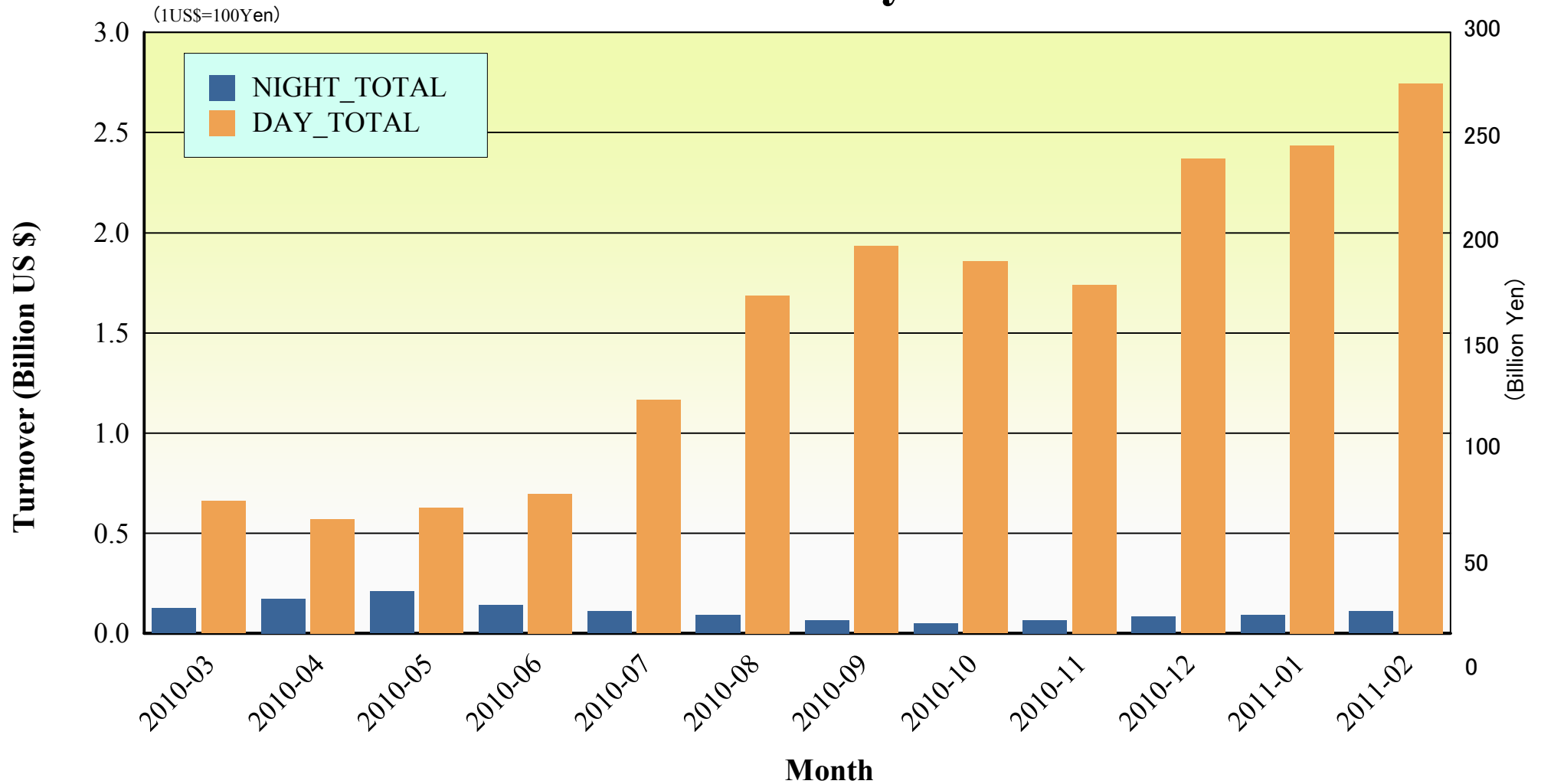
Daily Turnover on NIGHT Session



Average Daily Turnover by Month

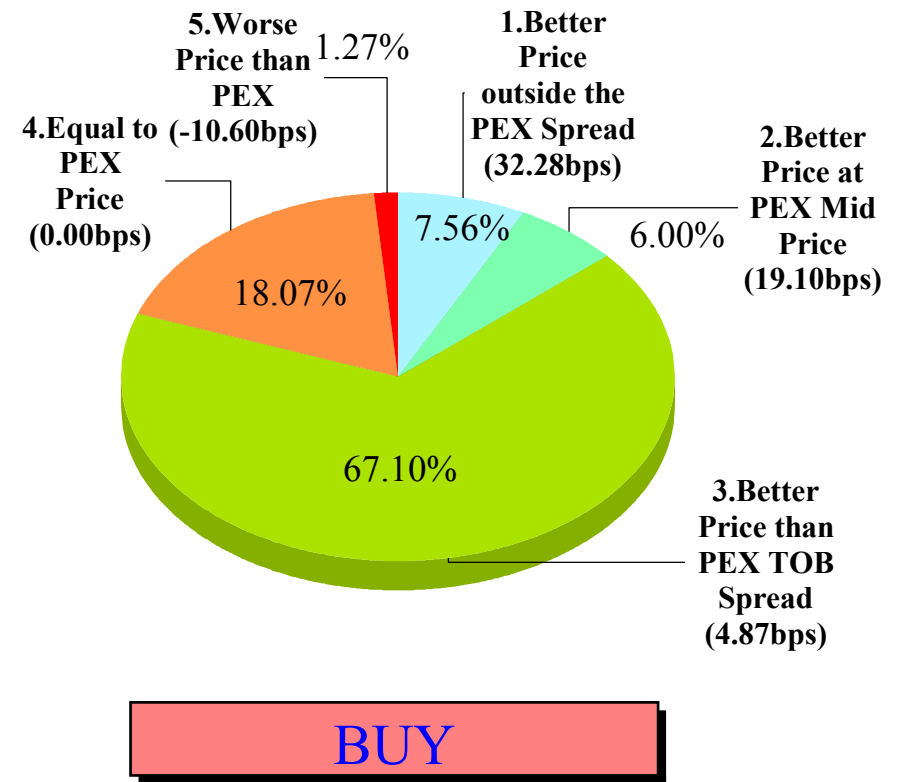
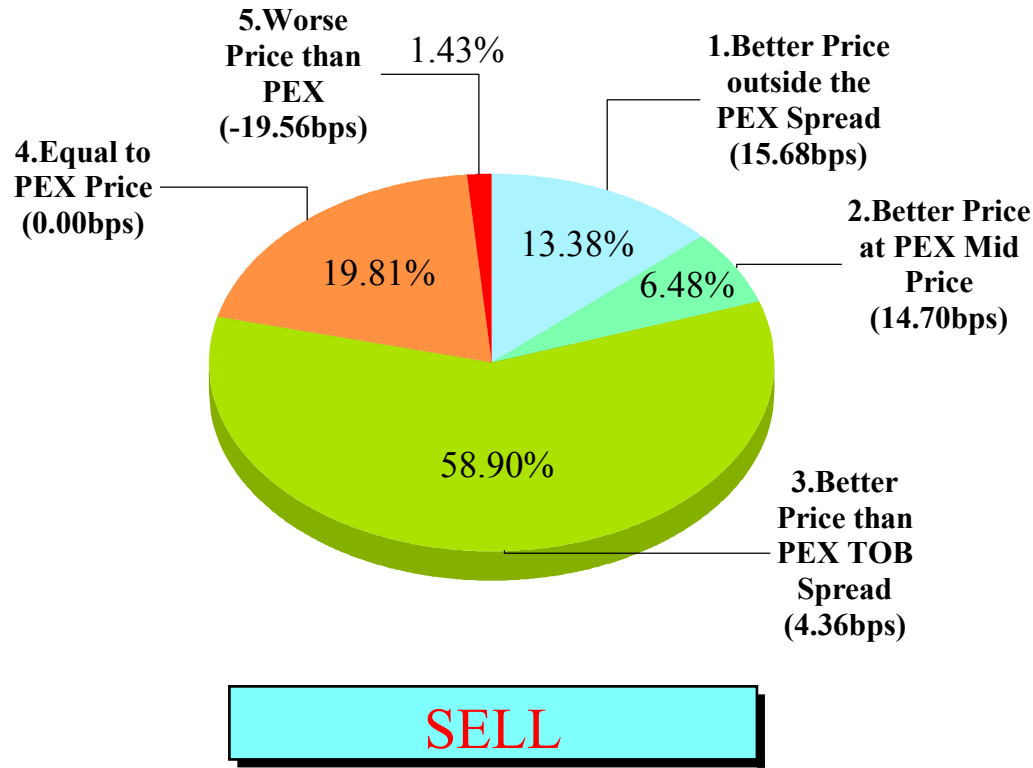


Total Turnover by Month



"Daytime Session" Execution

Nikkei 225 (Feb-2011)

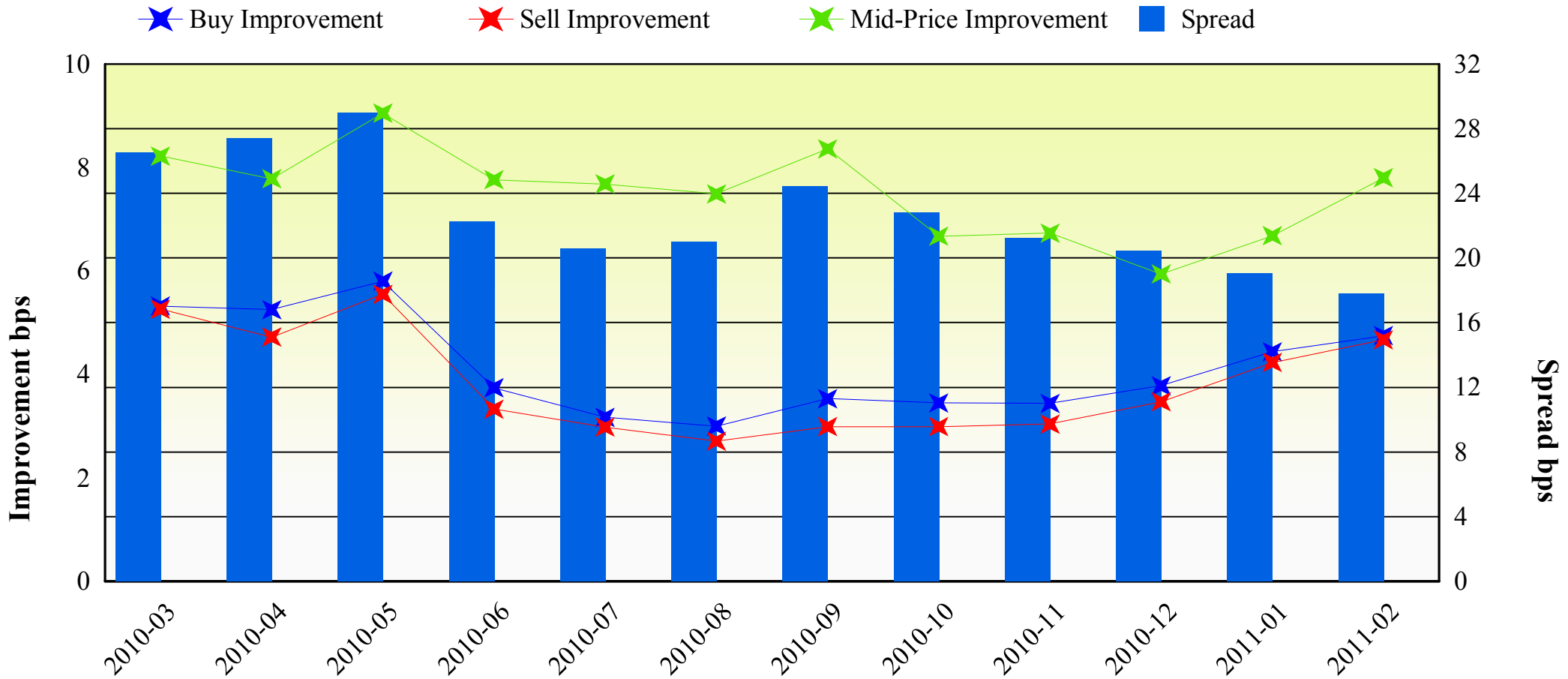


Note1: Excluded the executions from before 9AM, lunch break, and after 3PM

Note2: Avg. Price Improvement are based on Japannext vs. Primary Exchange prices

Improvement of Order (bps)

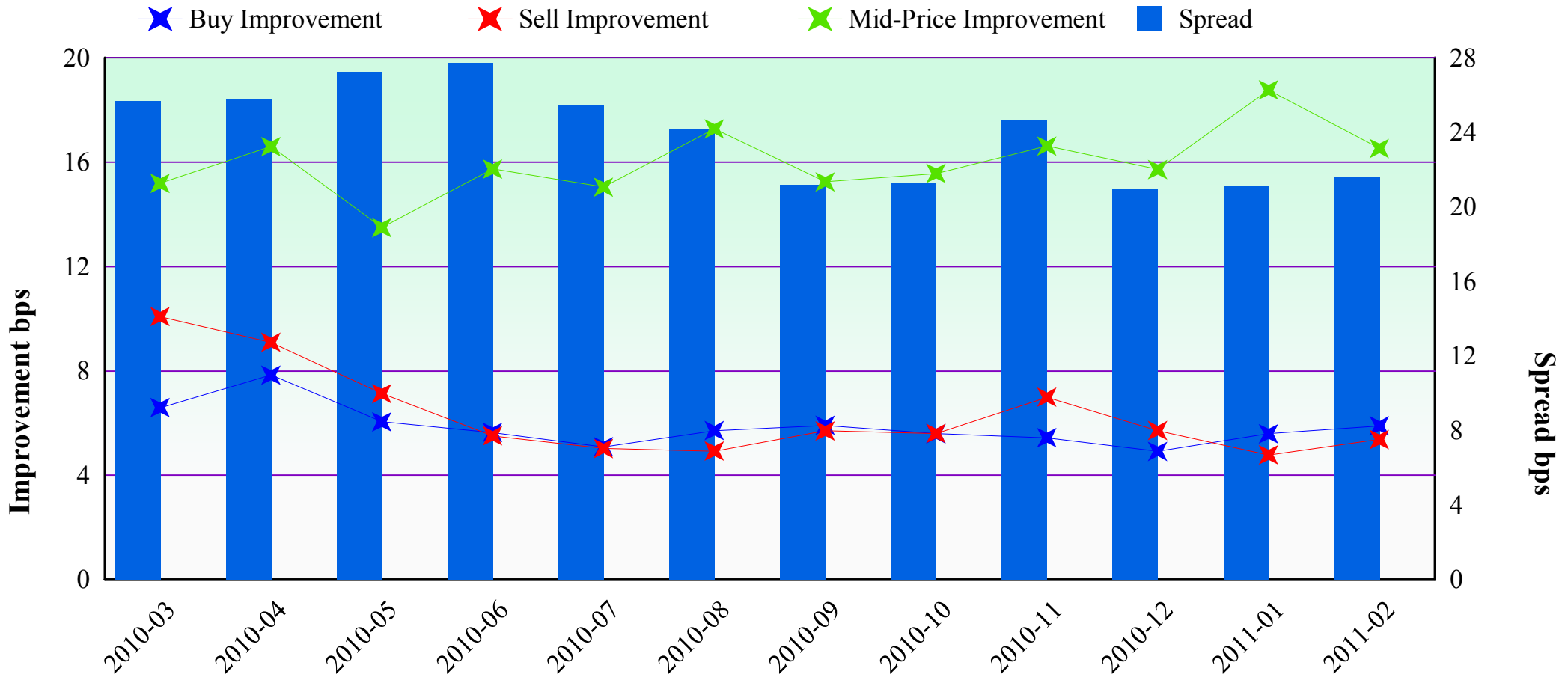
Nikkei 225 (Feb-2011)



Note1: Excluded the executions from before 9AM, lunch break, and after 3PM
 Note2: Avg. Price Improvements are based on Japannext vs. Primary Exchange prices

Improvement of Execution (bps)

Nikkei 225 (Feb-2011)



Note1: Excluded the executions from before 9AM, lunch break, and after 3PM

Note2: Avg. Price Improvements are based on Japannext vs. Primary Exchange prices

Day/Night Monthly Turnover for Top 25 Names

(DAY Session)

	SYMBOL	SYMBOL	TURNOVER (Million US\$ 1US\$=100Yen)	Market-share (%)
1	8411	MIZUHO FINANCIAL GROUP, INC.	174.08	3.41
2	7203	TOYOTA MOTOR CORP.	74.76	0.97
3	8306	mitsubishi UFJ FINANCIAL GROUP, INC.	64.31	1.17
4	7751	CANON INC.	63.33	1.65
5	7267	HONDA MOTOR CO., LTD.	49.46	1.34
6	6501	HITACHI, LTD.	48.45	0.94
7	8604	NOMURA HOLDINGS, INC.	38.03	1.33
8	4502	TAKEDA PHARMACEUTICAL CO., LTD.	31.96	1.97
9	9432	NIPPON TELEGRAPH & TELEPHONE CORP.	29.66	1.54
10	6502	TOSHIBA CORP.	29.01	0.69
11	1605	INPEX CORP.	27.69	1.13
12	8802	MITSUBISHI ESTATE CO., LTD.	27.52	1.40
13	8591	ORIX CORP.	27.47	1.19
14	8316	SUMITOMO MITSUI FINANCIAL GROUP, INC.	27.40	0.39
15	9020	EAST JAPAN RAILWAY CO.	25.58	2.06
16	7201	NISSAN MOTOR CO., LTD.	24.85	0.95
17	8031	MITSUI & CO., LTD.	23.96	0.89
18	6503	MITSUBISHI ELECTRIC CORP.	23.92	1.29
19	7011	MITSUBISHI HEAVY IND., LTD.	23.81	1.40
20	9433	KDDI CORP.	23.27	1.25
21	6301	KOMATSU LTD.	21.06	0.87
22	9984	SOFTBANK CORP.	21.00	0.35
23	2914	JAPAN TOBACCO INC.	19.61	1.33
24	7202	ISUZU MOTORS LTD.	18.66	1.24
25	6762	TDK CORP.	18.36	1.20

(Feb-2011)

(NIGHT Session)

highlight : "Common" names for Day & NightTime

	SYMBOL	DESCRIPTION	TURNOVER (Million US\$ 1US\$=100Yen)
1	8411	MIZUHO FINANCIAL GROUP, INC.	9.62
2	7203	TOYOTA MOTOR CORP.	3.79
3	2684	JIPANGU HOLDINGS INC.	3.62
4	8306	mitsubishi UFJ FINANCIAL GROUP, INC.	2.87
5	8316	SUMITOMO MITSUI FINANCIAL GROUP, INC.	2.53
6	6501	HITACHI, LTD.	2.40
7	7974	NINTENDO CO., LTD.	1.76
8	9737	CSK CORP.	1.70
9	9424	JAPAN COMMUNICATIONS INC.	1.55
10	3844	COMTURE CORP.	1.50
11	9726	KINKI NIPPON TOURIST CO., LTD.	1.47
12	8058	MITSUBISHI CORP.	1.38
13	4779	SOFTBRAIN CO., LTD.	1.38
14	8308	RESONA HOLDINGS, INC.	1.31
15	6752	PANASONIC CORP.	1.30
16	5405	SUMITOMO METAL IND., LTD.	1.28
17	3756	MAMEZOU OS HOLDINGS CO., LTD.	1.19
18	3236	PROPERST CO., LTD.	1.17
19	9984	SOFTBANK CORP.	1.15
20	6502	TOSHIBA CORP.	1.13
21	2162	NIPPON MANUFACTURING SERVICE CORP.	1.13
22	7201	NISSAN MOTOR CO., LTD.	1.09
23	8031	MITSUI & CO., LTD.	1.06
24	6758	SONY CORP.	1.05
25	2432	DENA CO., LTD.	1.01

Improvement of Monthly Turnover for Top 25 Names (Feb-2011)

(Daytime Session)

	RIC	NAME	Sell Executions							Improve Avg. BPS	Buy Executions							Improve Avg. BPS
			Worse(A)		Equal(B)		Better(C)		(B) + (C)		Worse(A)		Equal(B)		Better(C)		(B) + (C)	
1	8411.T	MIZUHO	8	0.08%	371	3.84%	9,277	96.07%	99.92%	18.54	18	0.14%	284	2.27%	12,213	97.59%	99.86%	27.43
2	7203.T	TOYOTA	14	0.63%	499	22.57%	1,698	76.80%	99.37%	3.73	18	0.72%	562	22.34%	1,936	76.95%	99.28%	3.11
3	8306.T	MUFG	105	3.02%	571	16.41%	2,803	80.57%	96.98%	6.00	7	0.25%	427	15.24%	2,367	84.51%	99.75%	5.44
4	7751.T	CANON	10	0.65%	379	24.67%	1,147	74.67%	99.35%	3.68	7	0.29%	223	9.33%	2,159	90.37%	99.71%	2.40
5	7267.T	HONDA	17	1.17%	460	31.77%	971	67.06%	98.83%	5.45	5	0.27%	184	9.86%	1,677	89.87%	99.73%	3.19
6	6501.T	HITACHI	12	1.35%	189	21.31%	686	77.34%	98.65%	6.87	24	1.79%	124	9.25%	1,193	88.96%	98.21%	3.88
7	8604.T	NOMRAHD	8	0.38%	608	28.58%	1,511	71.04%	99.62%	7.33	6	0.25%	285	11.94%	2,096	87.81%	99.75%	4.09
8	4502.T	TAKEDAP	2	0.32%	57	9.19%	561	90.48%	99.68%	2.97	3	0.23%	128	9.88%	1,165	89.89%	99.77%	2.09
9	9432.T	NTT	5	0.47%	135	12.56%	935	86.98%	99.53%	2.77	7	0.56%	310	24.94%	926	74.50%	99.44%	3.88
10	6502.T	TOSHIBA	0	0.00%	167	28.35%	422	71.65%	100.00%	7.66	9	1.13%	85	10.63%	706	88.25%	98.88%	3.92
11	1605.T	INPEX	9	1.04%	41	4.72%	819	94.25%	98.96%	3.19	11	0.63%	92	5.28%	1,639	94.09%	99.37%	2.28
12	8802.T	MTB-EST	72	10.08%	47	6.58%	595	83.33%	89.92%	3.10	35	3.70%	97	10.26%	813	86.03%	96.30%	2.32
13	8591.T	ORIX	18	0.92%	414	21.05%	1,535	78.04%	99.08%	3.03	27	1.22%	743	33.56%	1,444	65.22%	98.78%	3.89
14	8316.T	SMFG	30	1.64%	458	25.05%	1,340	73.30%	98.36%	3.05	45	6.09%	305	41.27%	389	52.64%	93.91%	4.68
15	9020.T	JR EAST	0	0.00%	92	12.85%	624	87.15%	100.00%	3.64	5	0.57%	130	14.74%	747	84.69%	99.43%	2.86
16	7201.T	NISSAN	4	0.18%	639	28.49%	1,600	71.33%	99.82%	3.56	29	1.08%	784	29.12%	1,879	69.80%	98.92%	3.16
17	8031.T	mitsui	51	3.18%	405	25.27%	1,147	71.55%	96.82%	2.75	38	2.99%	278	21.84%	957	75.18%	97.01%	2.36
18	6503.T	MELCO	8	0.95%	156	18.44%	682	80.61%	99.05%	3.42	12	1.43%	93	11.10%	733	87.47%	98.57%	1.96
19	7011.T	MHI	2	0.45%	94	20.94%	353	78.62%	99.55%	9.17	0	0.00%	142	17.53%	668	82.47%	100.00%	6.56
20	9433.T	KDDI	2	0.31%	18	2.82%	619	96.87%	99.69%	2.34	15	1.36%	15	1.36%	1,072	97.28%	98.64%	1.92
21	6301.T	KOMATSU	106	5.86%	471	26.05%	1,231	68.09%	94.14%	2.65	79	7.68%	344	33.46%	605	58.85%	92.32%	2.67
22	9984.T	SOFTBNK	57	5.75%	321	32.39%	613	61.86%	94.25%	4.34	31	2.79%	509	45.77%	572	51.44%	97.21%	5.11
23	2914.T	JT	4	0.62%	12	1.87%	625	97.50%	99.38%	1.98	7	0.90%	15	1.93%	757	97.18%	99.10%	1.68
24	7202.T	ISUZU	2	0.36%	155	27.83%	400	71.81%	99.64%	11.07	10	0.86%	59	5.05%	1,100	94.10%	99.14%	5.77
25	6762.T	TDK	2	0.48%	52	12.35%	367	87.17%	99.52%	4.43	6	0.91%	41	6.25%	609	92.84%	99.09%	2.04

Note1: Excluded the executions from before 9AM, lunch break, and after 3PM

Note2: Avg. Price Improvement are based on Japannext vs. Primary Exchange prices