

Monthly Statistics

May-2011

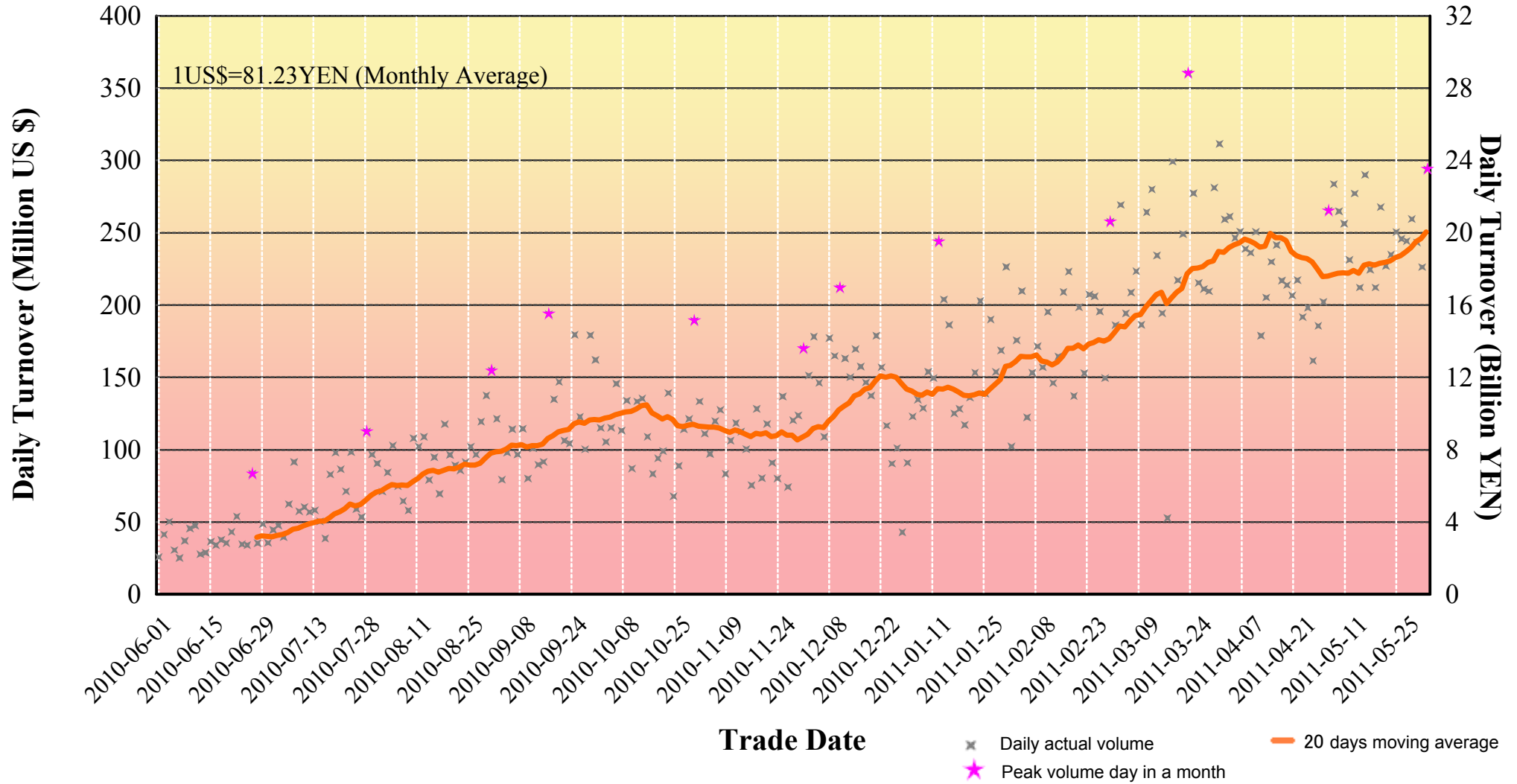
Japannext PTS

SBI Japannext Co., Ltd

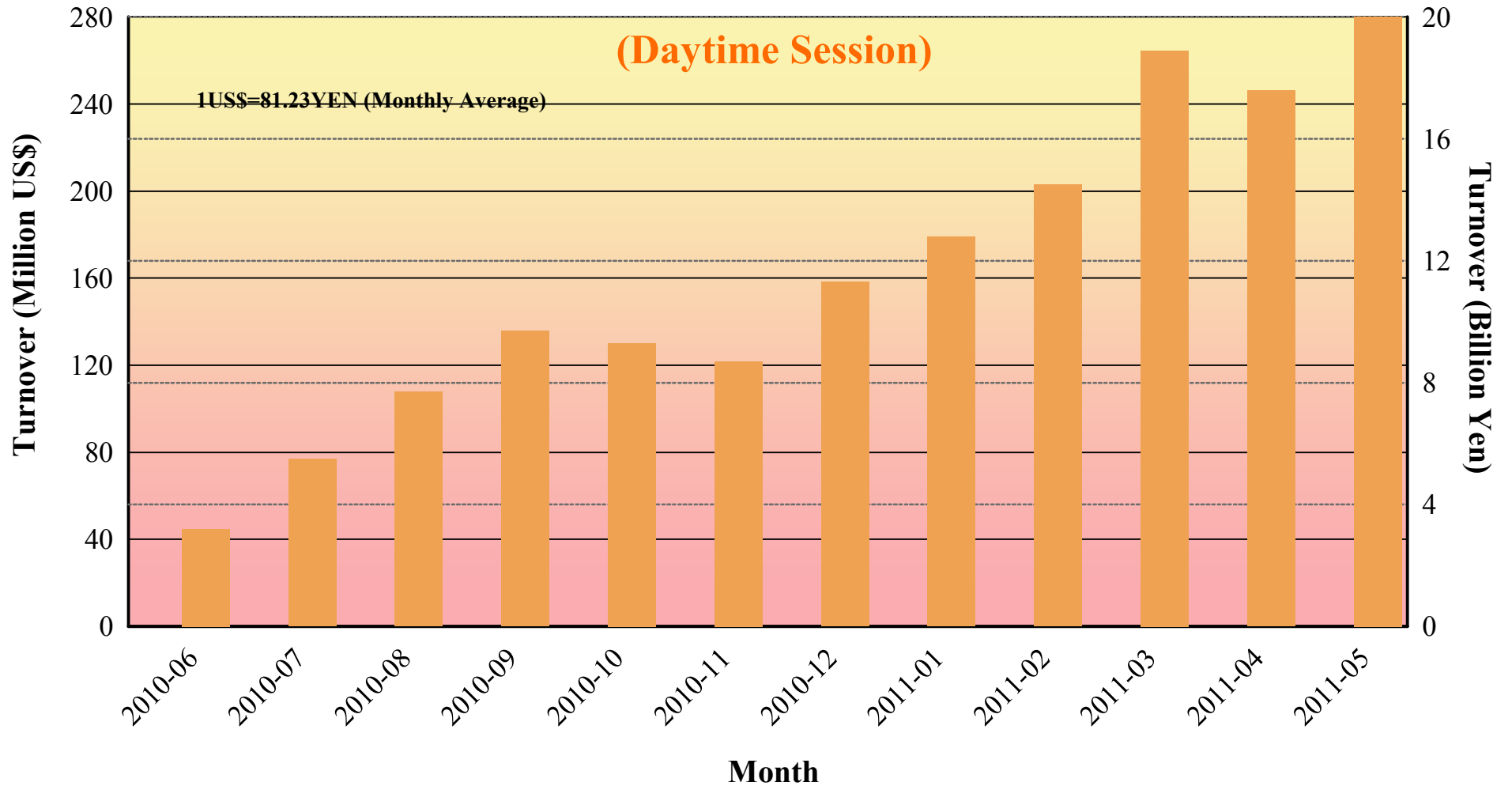
Disclaimer

Information provided is for reference purposes only and does not constitute financial product advice nor is constituted as an offer to sell or solicitation to buy any security. The ownership and intellectual property rights of this information are solely and exclusively belong to SBI Japannext Co.,Ltd.(“SBIJ”). According users are permitted to access and use the Information for their own personal, non-commercial and internal-use-only. Although SBIJ has made every effort to ensure the accuracy of the information as at the date of publication, SBIJ does not give any warranty as to the accuracy, reliability or completeness of the information. To the extent permitted by law, SBIJ and its employees, officers and contractors shall not be liable for any loss or damage arising in any way (including by way of negligence) from or in connection with any information provided or omitted or from anyone acting or refraining to act in reliance on this information.

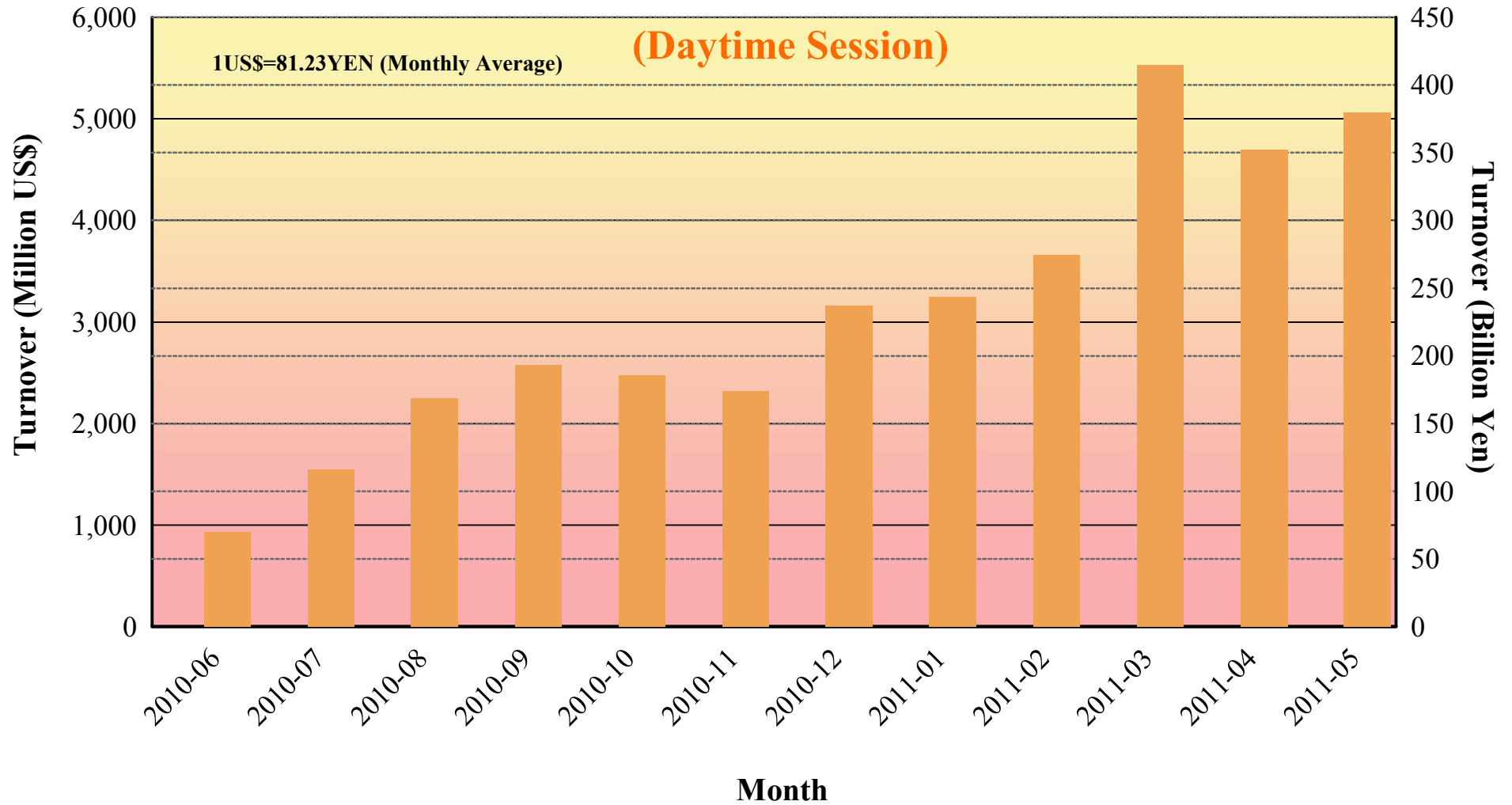
Daily Turnover of Daytime Session



Average Daily Turnover by Month

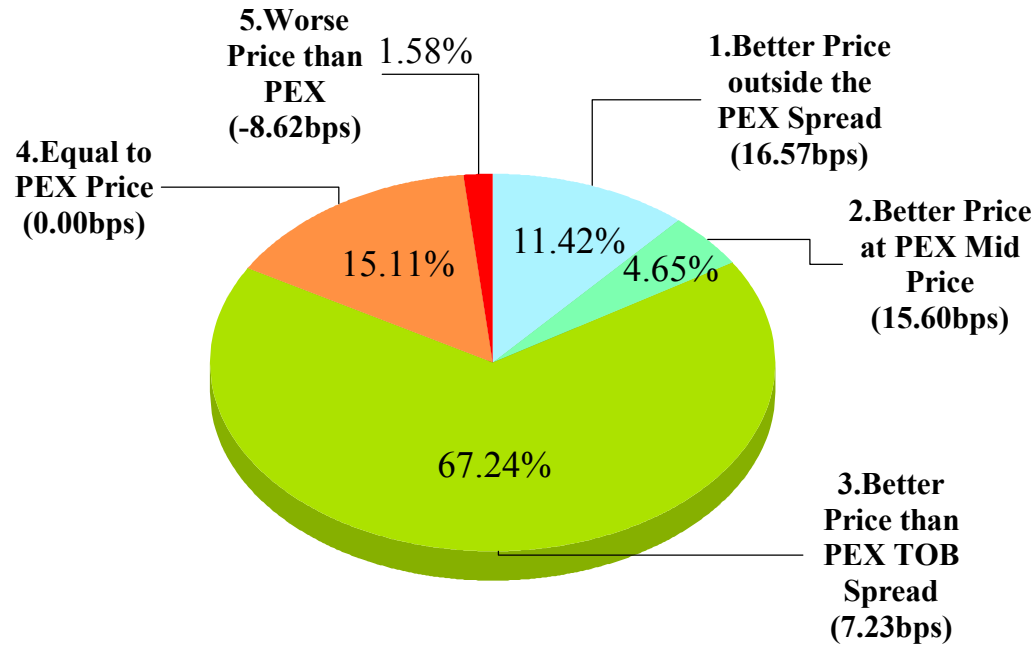


Total Turnover by Month

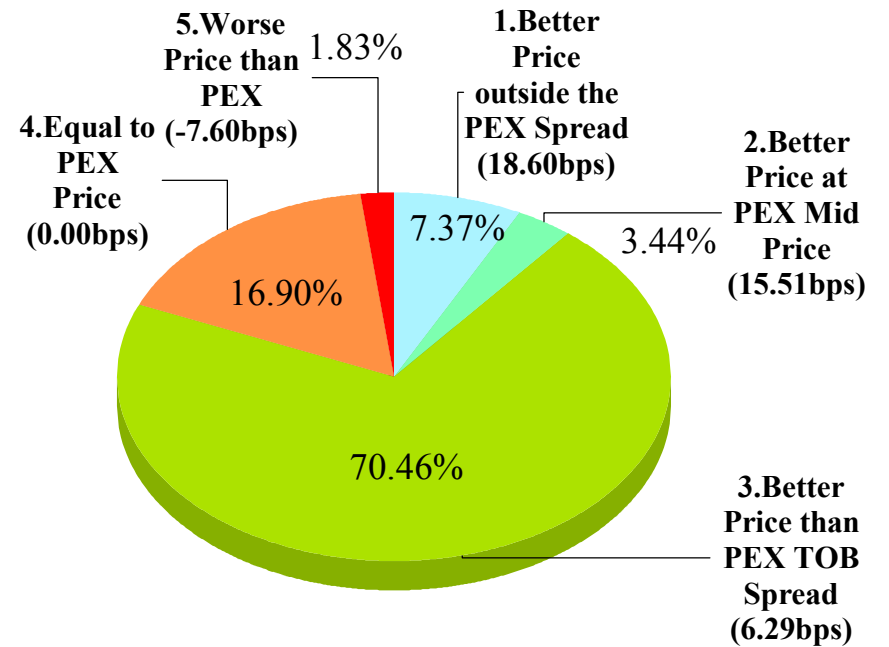


"Daytime Session" Execution

Nikkei 225 (May-2011)



SELL



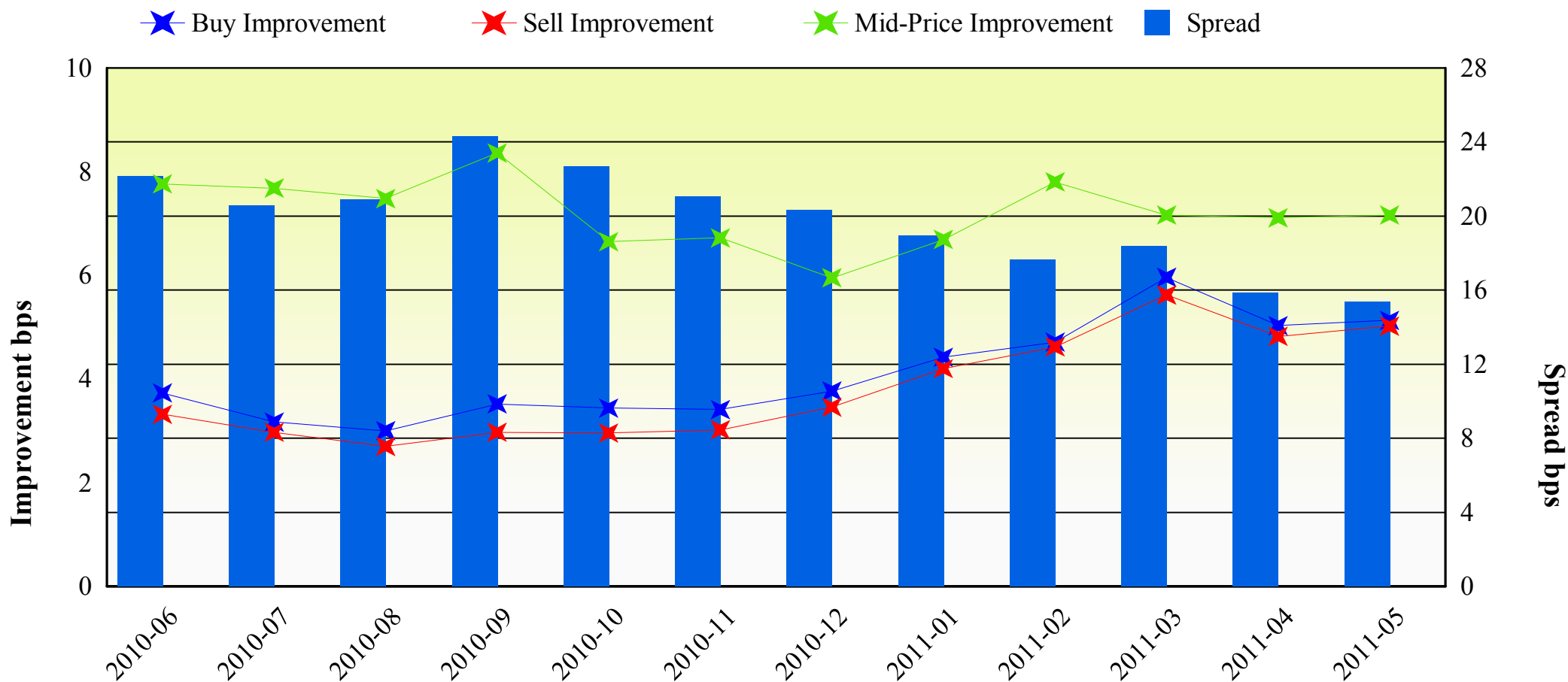
BUY

Note1: Excluded the executions from before 9AM, lunch break, and after 3PM

Note2: Avg. Price Improvement are based on Japannext vs. Primary Exchange prices

Improvement of Order (bps)

Nikkei 225 (May-2011)

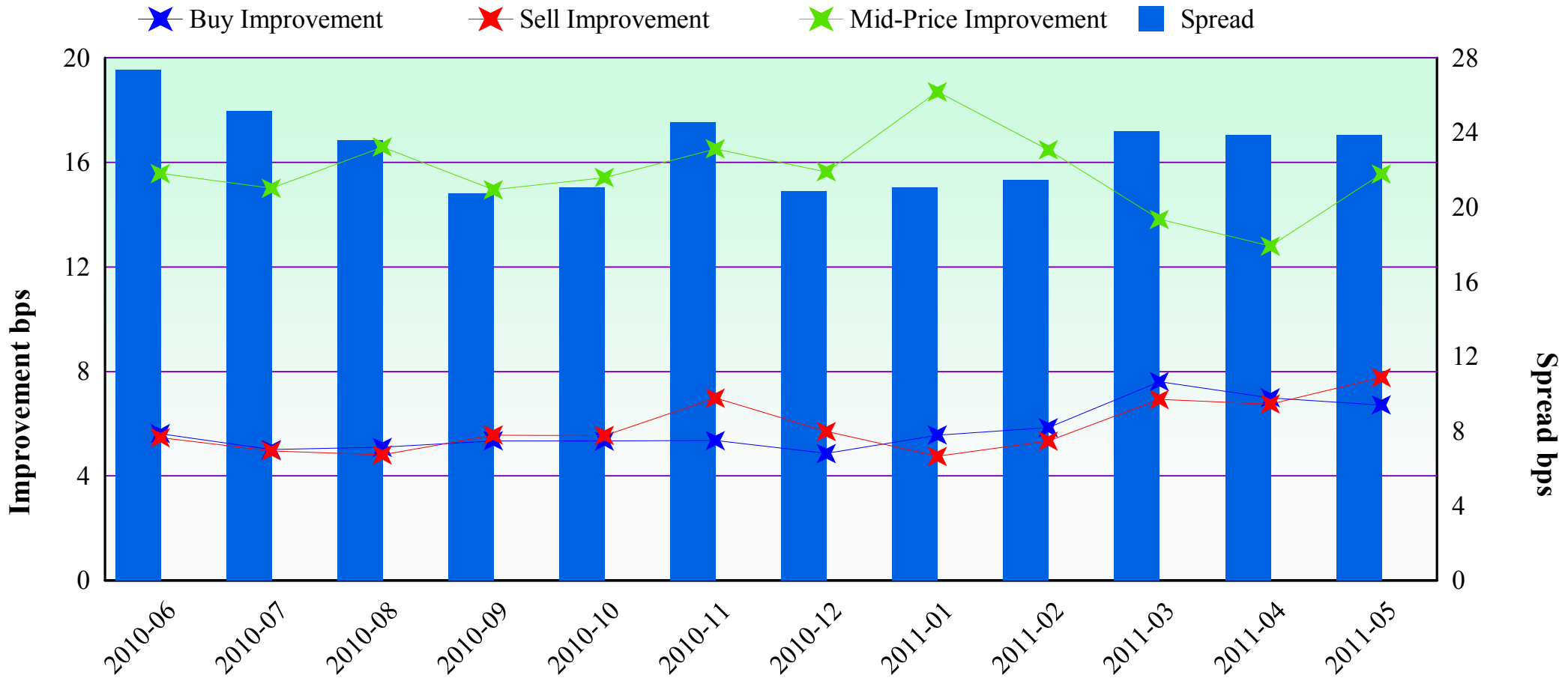


Note1: Excluded the executions from before 9AM, lunch break, and after 3PM

Note2: Avg. Price Improvements are based on Japannext vs. Primary Exchange prices

Improvement of Execution (bps)

Nikkei 225 (May-2011)



Note1: Excluded the executions from before 9AM, lunch break, and after 3PM

Note2: Avg. Price Improvements are based on Japannext vs. Primary Exchange prices

Monthly Turnover Top 50 Names in Daytime session (May-2011)

1US\$=81.23YEN (Monthly Average)

	SYMBOL	DESCRIPTION	Turnover (Million US\$)	Market-share (%)
1	8411	MIZUHO	169.20	5.88
2	8306	MUFG	168.41	3.48
3	7203	TOYOTA	133.58	2.10
4	9984	SOFTBNK	117.39	1.71
5	7751	CANON	97.89	2.31
6	7267	HONDA	94.89	2.15
7	9433	KDDI	71.32	2.39
8	4502	TAKEDAP	65.57	2.65
9	8316	SMFG	59.29	0.97
10	9432	NTT	56.02	3.13
11	7201	NISSAN	53.85	1.40
12	6501	HITACHI	51.69	1.19
13	8604	NOMRAHD	46.62	2.68
14	6954	FANUC	45.90	1.67
15	9983	FASTRET	43.82	2.35
16	1605	INPEX	43.76	1.85
17	8031	MITSUMI	41.69	1.44
18	6758	SONY	40.06	0.98
19	2914	JT	39.51	3.05
20	8058	MITBISI	38.52	1.34
21	7011	MHI	37.30	2.19
22	6502	TOSHIBA	36.71	1.08
23	4503	ASTELLAS	34.15	3.59
24	6301	KOMATSU	33.16	0.56
25	4063	SINETUC	29.37	2.00

	SYMBOL	DESCRIPTION	Turnover (Million US\$)	Market-share (%)
26	6971	KYOCERA	29.02	1.87
27	6762	TDK	28.72	2.08
28	8035	TKOELCN	28.04	2.31
29	6752	PANASONIC	28.00	2.12
30	8309	SMTRUST	27.89	2.81
31	9020	JR EAST	25.33	1.99
32	7202	ISUZU	25.19	1.25
33	6702	FUJITSU	24.04	2.10
34	7012	KHI	23.80	1.83
35	8802	MTB-EST	23.22	1.66
36	5401	NPSTEEL	22.91	2.64
37	5020	JX	22.05	1.74
38	8801	MTI-FU	22.01	1.88
39	9437	DOCOMO	21.79	1.51
40	7974	NINTEND	21.77	0.79
41	9202	ANA	21.27	6.09
42	9101	NYKLINE	21.22	2.73
43	8601	DAIWASG	20.73	3.19
44	6902	DENSO	20.25	1.12
45	6503	MELCO	20.03	1.26
46	8591	ORIX	19.36	1.31
47	5108	BRIDSTN	19.12	1.39
48	5405	SMI-MTI	18.85	4.37
49	4901	FUJIFILM	18.83	1.71
50	8002	MARBENI	18.80	1.80

Improvement of Monthly Turnover for Top 25 Names (May-2011)

(Daytime Session)

	RIC	NAME	Sell Executions							Improve Avg. BPS	Buy Executions							Improve Avg. BPS
			Worse(A)		Equal(B)		Better(C)		(B) + (C)		Worse(A)		Equal(B)		Better(C)		(B) + (C)	
1	8411.T	MIZUHO	18	0.11%	2,167	13.74%	13,591	86.15%	99.89%	30.97	9	0.07%	2,615	19.49%	10,793	80.44%	99.93%	28.28
2	8306.T	MUFG	13	0.26%	1,252	24.63%	3,819	75.12%	99.74%	10.43	17	0.34%	1,313	25.95%	3,730	73.72%	99.66%	9.31
3	7203.T	TOYOTA	23	0.57%	358	8.81%	3,684	90.63%	99.43%	5.30	24	0.55%	556	12.64%	3,818	86.81%	99.45%	5.18
4	9984.T	SOFTBNK	75	2.26%	432	13.00%	2,817	84.75%	97.74%	4.73	90	2.48%	258	7.11%	3,282	90.41%	97.52%	4.75
5	7751.T	CANON	10	0.33%	486	15.83%	2,574	83.84%	99.67%	4.22	14	0.45%	584	18.91%	2,490	80.63%	99.55%	4.03
6	7267.T	HONDA	31	0.79%	474	12.06%	3,425	87.15%	99.21%	5.83	46	0.98%	685	14.59%	3,965	84.43%	99.02%	5.51
7	9433.T	KDDI	11	0.62%	46	2.58%	1,728	96.81%	99.38%	4.72	12	0.70%	27	1.58%	1,674	97.72%	99.30%	4.07
8	4502.T	TAKEDAP	2	0.12%	241	13.87%	1,495	86.02%	99.88%	4.13	1	0.05%	237	11.64%	1,798	88.31%	99.95%	3.64
9	8316.T	SMFG	91	2.32%	1,040	26.55%	2,786	71.13%	97.68%	4.07	155	7.20%	1,003	46.59%	995	46.21%	92.80%	3.43
10	9432.T	NTT	16	0.70%	149	6.53%	2,117	92.77%	99.30%	4.36	10	0.38%	270	10.14%	2,382	89.48%	99.62%	4.17
11	7201.T	NISSAN	33	0.79%	923	22.10%	3,221	77.11%	99.21%	6.62	33	0.82%	727	18.13%	3,250	81.05%	99.18%	5.15
12	6501.T	HITACHI	24	1.55%	145	9.37%	1,378	89.08%	98.45%	8.43	35	2.17%	240	14.91%	1,335	82.92%	97.83%	8.12
13	8604.T	NOMRAHD	30	0.51%	534	9.06%	5,327	90.43%	99.49%	8.57	27	0.43%	520	8.29%	5,727	91.28%	99.57%	7.34
14	6954.T	FANUC	20	2.49%	39	4.86%	743	92.64%	97.51%	3.00	36	3.38%	38	3.56%	992	93.06%	96.62%	2.63
15	9983.T	FASTRET	65	6.60%	91	9.24%	829	84.16%	93.40%	3.58	42	3.22%	32	2.45%	1,231	94.33%	96.78%	3.35
16	1605.T	INPEX	11	0.92%	29	2.42%	1,159	96.66%	99.08%	5.74	20	1.15%	42	2.42%	1,674	96.43%	98.85%	4.19
17	8031.T	MITSUMI	69	2.73%	343	13.57%	2,115	83.70%	97.27%	3.51	89	2.38%	453	12.12%	3,197	85.50%	97.62%	2.68
18	6758.T	SONY	120	4.51%	864	32.48%	1,676	63.01%	95.49%	3.43	135	5.41%	973	38.98%	1,388	55.61%	94.59%	2.93
19	2914.T	JT	22	1.48%	38	2.56%	1,427	95.97%	98.52%	4.23	14	0.72%	33	1.69%	1,906	97.59%	99.28%	3.67
20	8058.T	MITBISI	108	3.88%	1,389	49.95%	1,284	46.17%	96.12%	3.91	92	5.08%	878	48.45%	842	46.47%	94.92%	3.65
21	7011.T	MHI	20	2.03%	110	11.14%	857	86.83%	97.97%	9.69	12	0.59%	270	13.30%	1,748	86.11%	99.41%	7.38
22	6502.T	TOSHIBA	22	2.05%	142	13.25%	908	84.70%	97.95%	8.97	17	1.37%	147	11.85%	1,077	86.78%	98.63%	9.04
23	4503.T	ASTELLAS	12	0.77%	76	4.87%	1,472	94.36%	99.23%	4.39	18	1.07%	132	7.88%	1,525	91.04%	98.93%	5.01
24	6301.T	KOMATSU	70	3.85%	740	40.66%	1,010	55.49%	96.15%	2.90	93	5.06%	828	45.07%	916	49.86%	94.94%	2.68
25	4063.T	SINETUC	6	0.56%	111	10.45%	945	88.98%	99.44%	4.97	38	2.26%	87	5.17%	1,559	92.58%	97.74%	3.66

Note1: Excluded the executions from before 9AM, lunch break, and after 3PM

Note2: Avg. Price Improvement are based on Japannext vs. Primary Exchange prices