

Monthly Statistics

Jul-2011

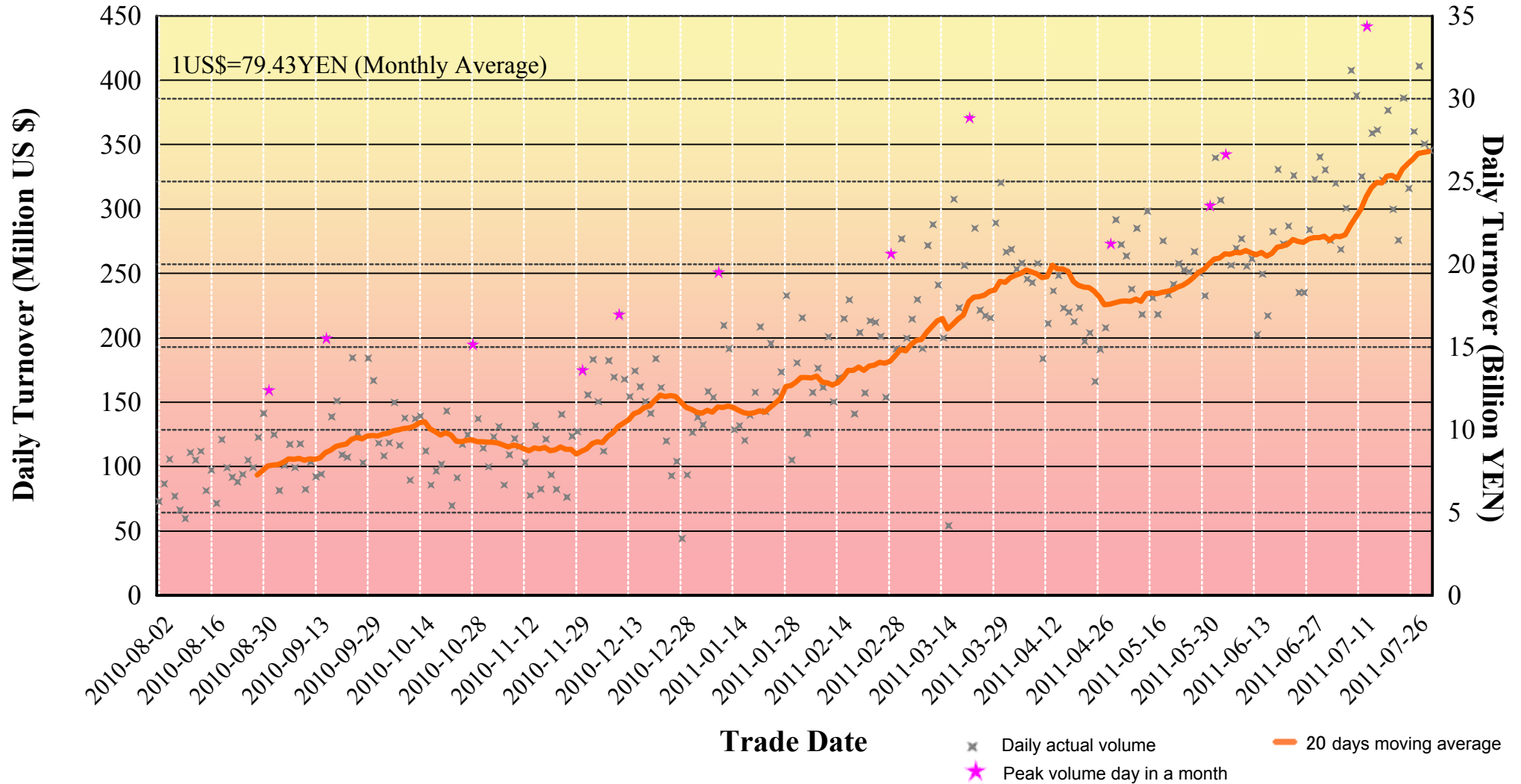
Japannext PTS

SBI Japannext Co., Ltd

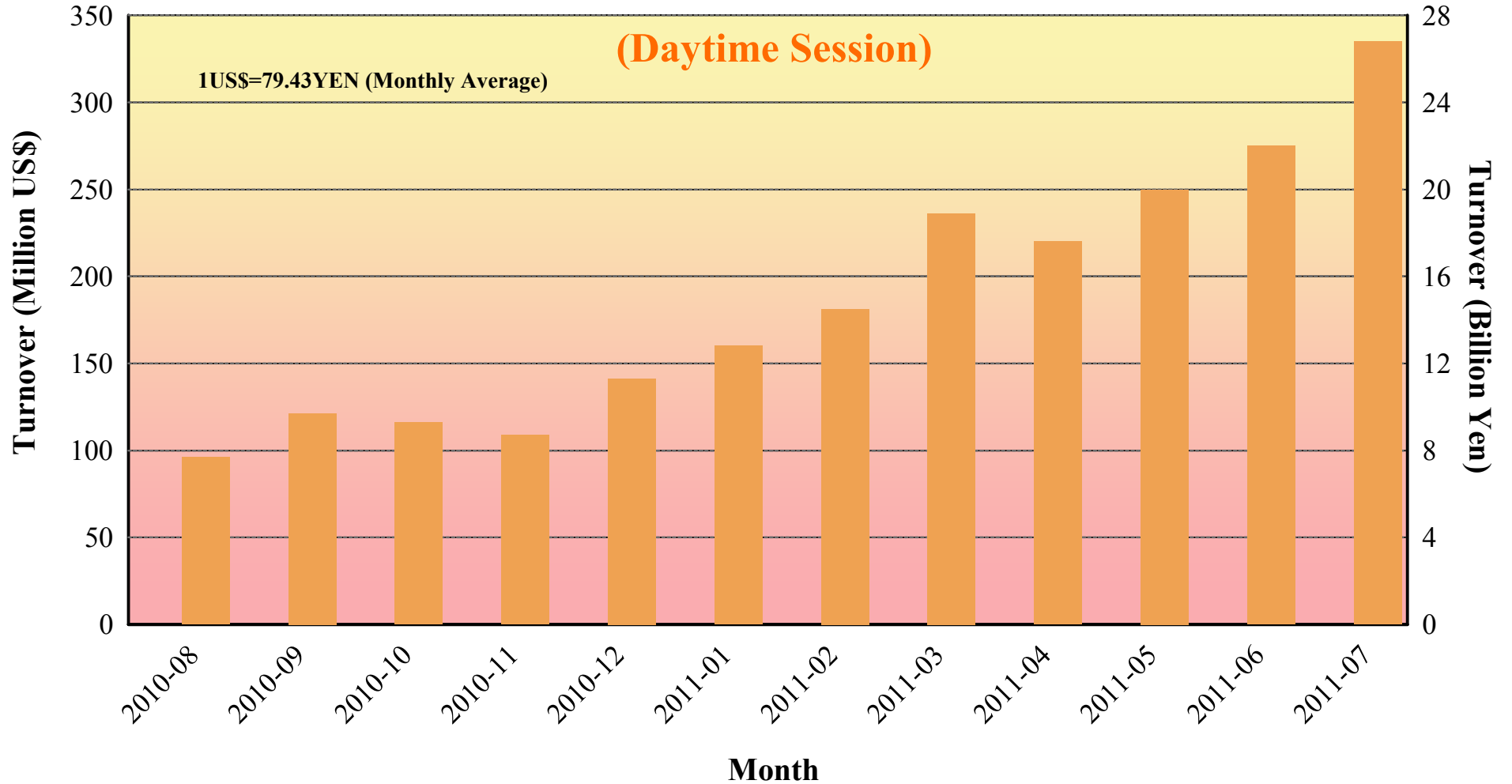
Disclaimer

Information provided is for reference purposes only and does not constitute financial product advice nor is constituted as an offer to sell or solicitation to buy any security. The ownership and intellectual property rights of this information are solely and exclusively belong to SBI Japannext Co.,Ltd.(“SBIJ”). According users are permitted to access and use the Information for their own personal, non-commercial and internal-use-only. Although SBIJ has made every effort to ensure the accuracy of the information as at the date of publication, SBIJ does not give any warranty as to the accuracy, reliability or completeness of the information. To the extent permitted by law, SBIJ and its employees, officers and contractors shall not be liable for any loss or damage arising in any way (including by way of negligence) from or in connection with any information provided or omitted or from anyone acting or refraining to act in reliance on this information.

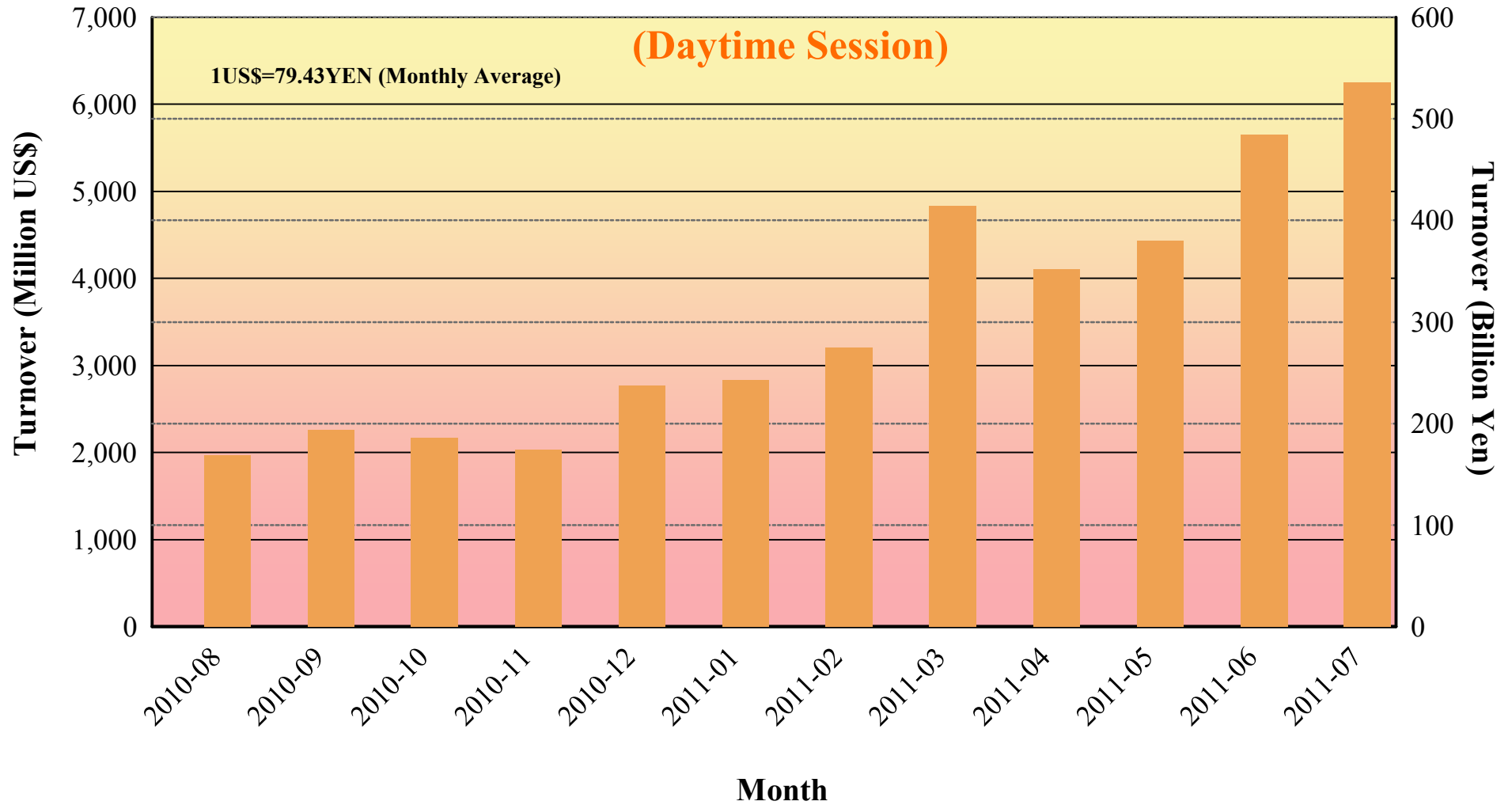
Daily Turnover of Daytime Session



Average Daily Turnover by Month

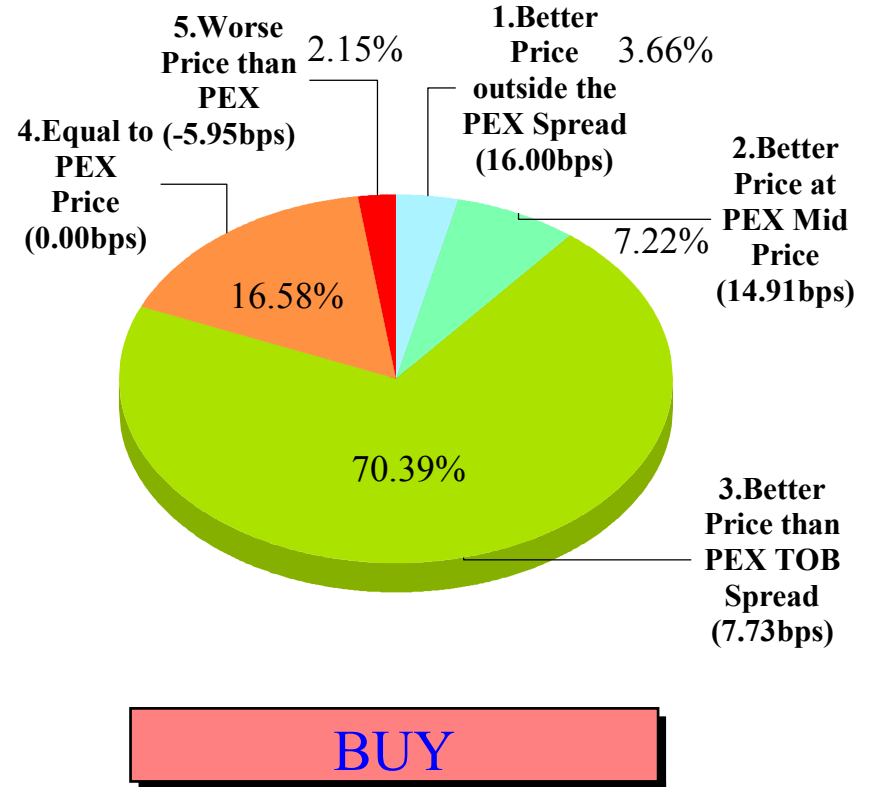
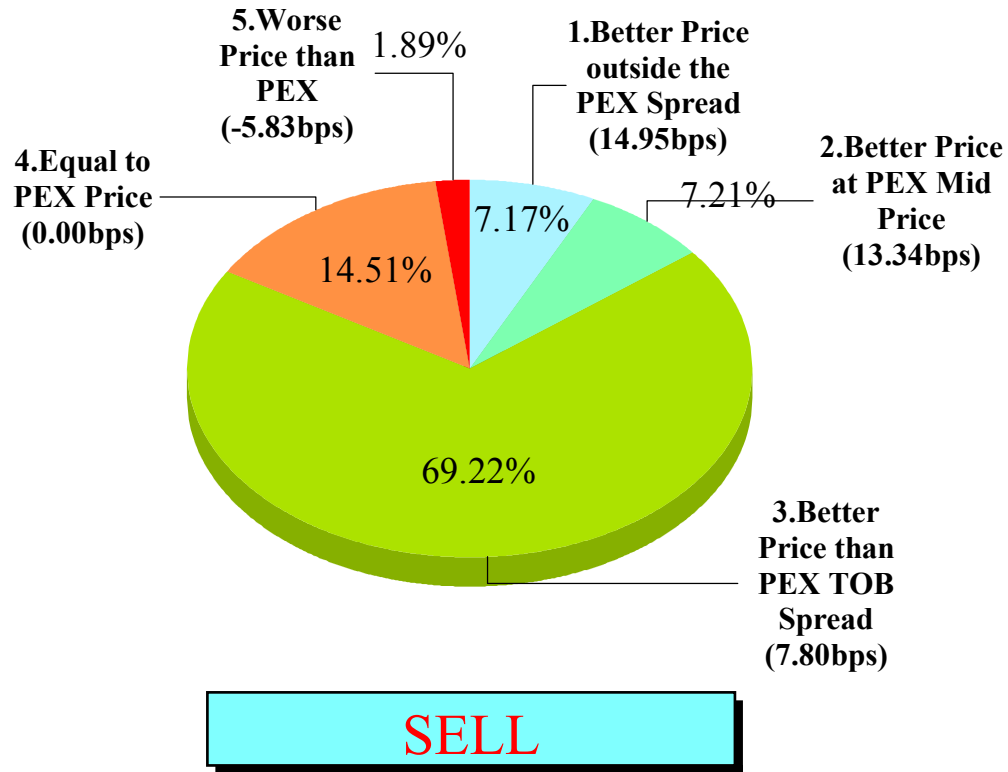


Total Turnover by Month



"Daytime Session" Execution

Nikkei 225 (Jul-2011)

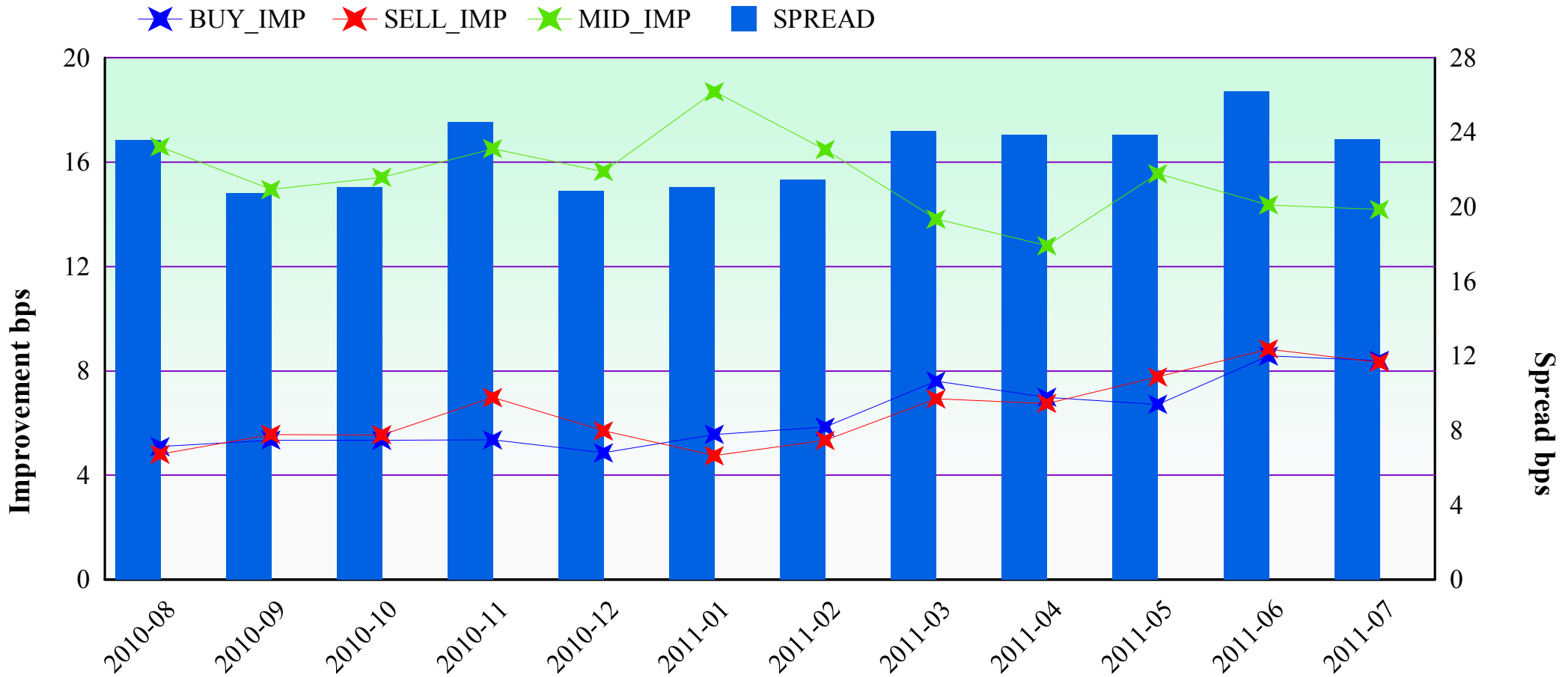


Note1: Excluded the executions from before 9AM, lunch break, and after 3PM

Note2: Avg. Price Improvement are based on Japannext vs. Primary Exchange prices

Improvement of Execution (bps)

Nikkei 225 (Jul-2011)



Note1: Excluded the executions from before 9AM, lunch break, and after 3PM

Note2: Avg. Price Improvements are based on Japannext vs. Primary Exchange prices

Monthly Turnover Top 50 Names in Daytime session (Jul-2011)

1US\$=79.43YEN (Monthly Average)

	SYMBOL	DESCRIPTION	Turnover (Million US\$)	Market-share (%)
1	8306	MUFG	422.72	7.94
2	8411	MIZUHO	220.60	7.06
3	7203	TOYOTA	194.00	3.95
4	9984	SOFTBNK	158.55	4.47
5	7751	CANON	135.39	4.38
6	7267	HONDA	129.01	4.04
7	7201	NISSAN	120.34	3.86
8	4502	TAKEDAP	92.98	6.05
9	8604	NOMRAHD	92.19	5.10
10	9432	NTT	83.83	5.68
11	6501	HITACHI	80.66	2.57
12	9433	KDDI	76.81	4.26
13	9501	TEPCO	74.95	0.46
14	2914	JT	72.83	3.45
15	6954	FANUC	71.75	1.76
16	8316	SMFG	70.24	1.29
17	1605	INPEX	67.17	4.75
18	7011	MHI	64.92	4.16
19	5401	NPSTEEL	64.07	5.03
20	6502	TOSHIBA	61.91	2.46
21	6752	PANASONIC	58.28	3.27
22	8058	MITUBISI	55.25	2.01
23	4503	ASTELLAS	55.17	4.85
24	4523	EISAI	54.40	6.76
25	7974	NINTEND	53.05	1.26

	SYMBOL	DESCRIPTION	Turnover (Million US\$)	Market-share (%)
26	3402	TORAY	51.25	4.83
27	6301	KOMATSU	50.39	1.62
28	5020	JX	50.26	4.58
29	8002	MARBENI	47.51	3.23
30	8031	MITSUI	46.49	1.87
31	8308	RESONA	46.39	3.59
32	8035	TKOELCN	45.94	3.01
33	9531	TKO-GAS	44.55	3.50
34	7261	MAZDA	44.53	5.69
35	2432	DENA	43.88	1.89
36	7202	ISUZU	43.14	4.63
37	8591	ORIX	40.91	2.93
38	5405	SMI-MTI	40.45	5.83
39	9202	ANA	40.21	8.11
40	6503	MELCO	39.66	3.09
41	6758	SONY	39.61	1.74
42	6971	KYOCERA	39.29	2.50
43	6981	MURATA	38.75	3.27
44	6594	NIDEC	38.38	2.98
45	8309	SMTRUST	38.02	3.97
46	7012	KHI	36.96	3.65
47	8001	ITOCHU	36.11	2.66
48	6988	NTTODEN	34.03	2.82
49	9020	JR EAST	33.88	2.98
50	9101	NYKLINE	33.07	4.45

Improvement of Monthly Turnover for Top 25 Names (Jul-2011)

(Daytime Session)

	RIC	NAME	Sell Executions							Improve Avg. BPS	Buy Executions							Improve Avg. BPS
			Worse(A)		Equal(B)		Better(C)		(B) + (C)		Worse(A)		Equal(B)		Better(C)		(B) + (C)	
1	8306.T	MUFG	84	0.81%	855	8.24%	9,439	90.95%	99.19%	11.73	50	0.43%	1,246	10.67%	10,378	88.90%	99.57%	10.40
2	8411.T	MIZUHO	11	0.07%	667	4.49%	14,161	95.43%	99.93%	26.99	14	0.08%	653	3.83%	16,376	96.09%	99.92%	30.03
3	7203.T	TOYOTA	39	0.79%	319	6.46%	4,580	92.75%	99.21%	5.57	52	0.97%	467	8.69%	4,853	90.34%	99.03%	4.64
4	9984.T	SOFTBNK	82	1.70%	360	7.47%	4,379	90.83%	98.30%	5.63	119	2.56%	408	8.78%	4,118	88.65%	97.44%	5.36
5	7751.T	CANON	13	0.44%	358	11.98%	2,617	87.58%	99.56%	4.69	19	0.40%	405	8.47%	4,355	91.13%	99.60%	5.17
6	7267.T	HONDA	26	0.58%	585	13.01%	3,885	86.41%	99.42%	5.35	23	0.55%	517	12.38%	3,635	87.07%	99.45%	5.41
7	7201.T	NISSAN	82	1.58%	622	11.97%	4,493	86.45%	98.42%	4.70	77	1.01%	763	10.03%	6,767	88.96%	98.99%	3.97
8	4502.T	TAKEDAP	8	0.25%	238	7.37%	2,982	92.38%	99.75%	4.55	24	0.72%	315	9.39%	3,017	89.90%	99.28%	4.13
9	8604.T	NOMRAHD	28	0.40%	522	7.52%	6,387	92.07%	99.60%	9.58	45	0.49%	591	6.46%	8,516	93.05%	99.51%	9.49
10	9432.T	NTT	35	1.18%	222	7.48%	2,712	91.34%	98.82%	4.14	32	1.05%	172	5.62%	2,858	93.34%	98.95%	4.24
11	6501.T	HITACHI	47	2.07%	179	7.86%	2,050	90.07%	97.93%	7.36	39	1.72%	175	7.74%	2,048	90.54%	98.28%	7.31
12	9433.T	KDDI	12	0.75%	87	5.46%	1,493	93.78%	99.25%	5.26	49	1.92%	145	5.70%	2,352	92.38%	98.08%	4.53
13	9501.T	TEPCO	89	0.99%	3,717	41.28%	5,198	57.73%	99.01%	9.89	108	1.04%	5,532	53.14%	4,770	45.82%	98.96%	8.72
14	2914.T	JT	21	0.73%	263	9.19%	2,579	90.08%	99.27%	6.15	40	1.31%	441	14.49%	2,562	84.19%	98.69%	4.32
15	6954.T	FANUC	57	4.61%	257	20.79%	922	74.60%	95.39%	3.37	85	5.11%	326	19.61%	1,251	75.27%	94.89%	3.07
16	8316.T	SMFG	166	3.60%	1,140	24.71%	3,307	71.69%	96.40%	2.96	371	10.79%	1,523	44.29%	1,545	44.93%	89.21%	2.49
17	1605.T	INPEX	38	2.29%	138	8.31%	1,484	89.40%	97.71%	6.00	49	1.77%	249	9.01%	2,467	89.22%	98.23%	4.60
18	7011.T	MHI	11	0.67%	174	10.66%	1,447	88.66%	99.33%	9.19	11	0.45%	176	7.15%	2,275	92.40%	99.55%	9.33
19	5401.T	NPSTEEL	15	0.94%	195	12.24%	1,383	86.82%	99.06%	13.88	22	1.00%	219	10.00%	1,950	89.00%	99.00%	14.95
20	6502.T	TOSHIBA	34	1.86%	228	12.47%	1,566	85.67%	98.14%	8.72	19	0.84%	238	10.47%	2,016	88.69%	99.16%	8.76
21	6752.T	PANASNIC	60	1.38%	530	12.23%	3,745	86.39%	98.62%	4.07	60	1.09%	607	11.01%	4,845	87.90%	98.91%	3.90
22	8058.T	MITBISI	169	5.55%	1,480	48.57%	1,398	45.88%	94.45%	2.77	128	3.76%	1,340	39.41%	1,932	56.82%	96.24%	3.40
23	4503.T	ASTELLAS	9	0.50%	169	9.33%	1,634	90.18%	99.50%	5.01	19	0.76%	121	4.84%	2,361	94.40%	99.24%	5.58
24	4523.T	EISAI	3	0.17%	79	4.60%	1,636	95.23%	99.83%	5.16	11	0.43%	109	4.30%	2,416	95.27%	99.57%	4.52
25	7974.OS	NINTEND	75	6.00%	361	28.86%	815	65.15%	94.00%	2.77	39	2.84%	324	23.58%	1,011	73.58%	97.16%	9.55

Note1: Excluded the executions from before 9AM, lunch break, and after 3PM

Note2: Avg. Price Improvement are based on Japannext vs. Primary Exchange prices