

Monthly Statistics

Aug-2011

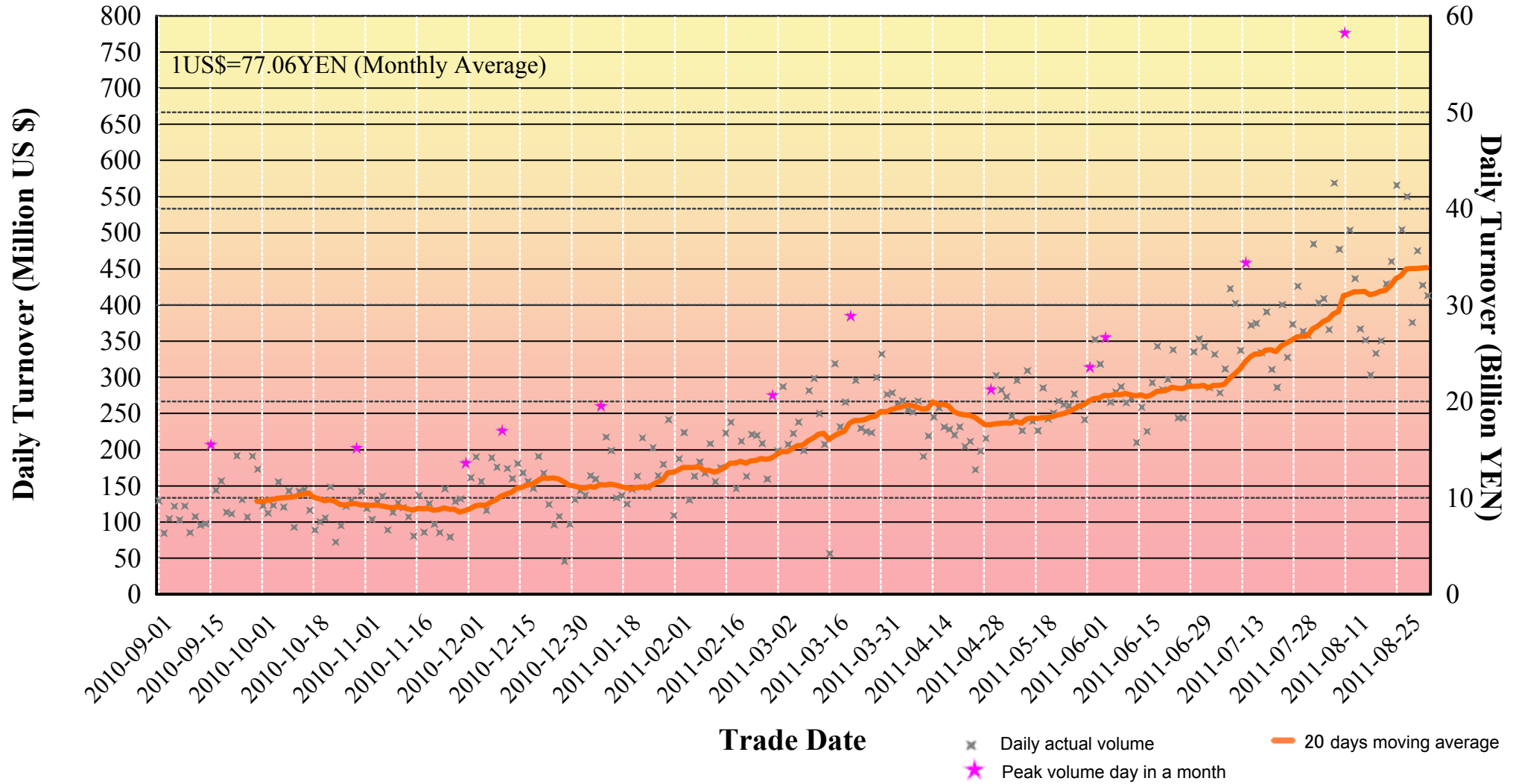
Japannext PTS

SBI Japannext Co., Ltd

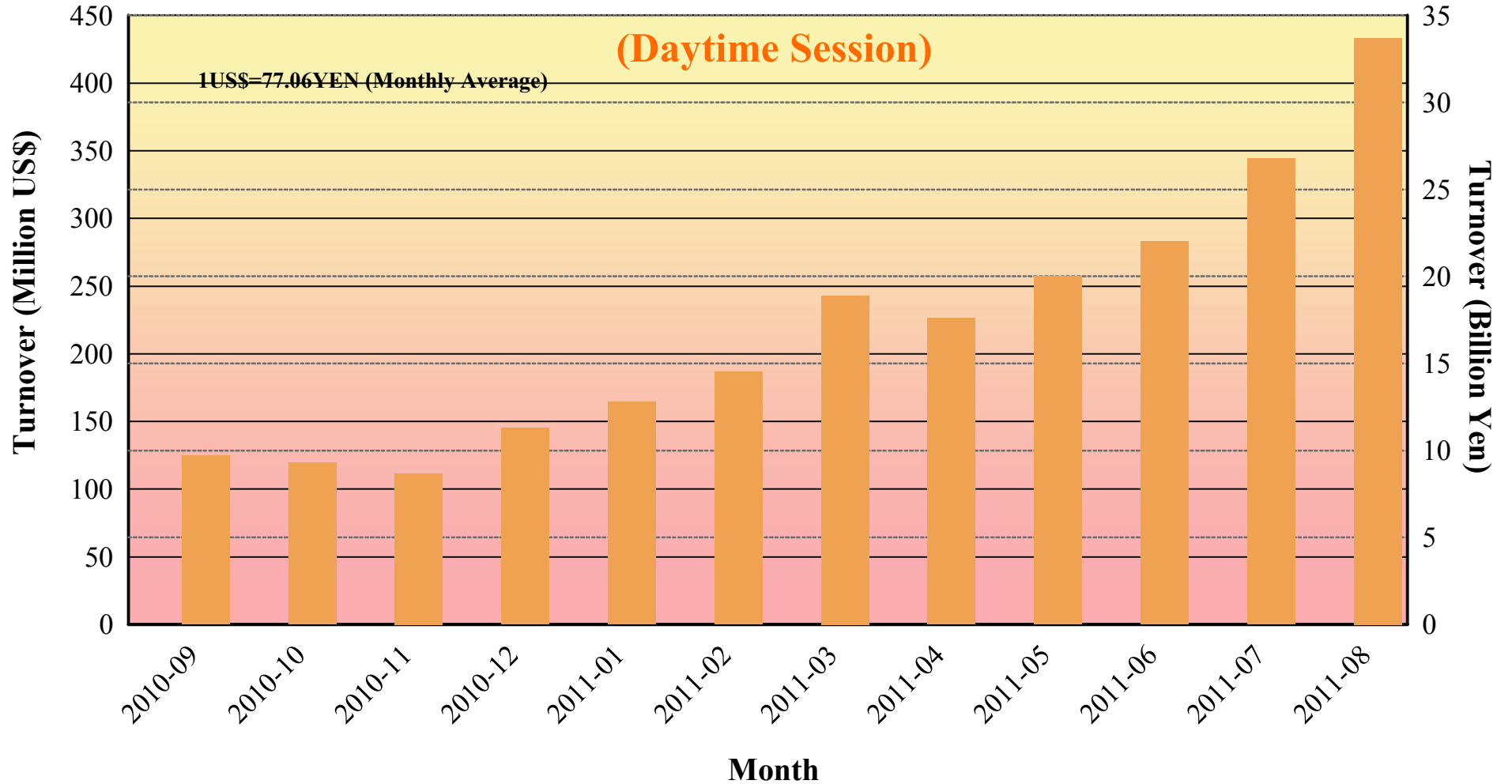
Disclaimer

Information provided is for reference purposes only and does not constitute financial product advice nor is constituted as an offer to sell or solicitation to buy any security. The ownership and intellectual property rights of this information are solely and exclusively belong to SBI Japannext Co.,Ltd.(“SBIJ”). According users are permitted to access and use the Information for their own personal, non-commercial and internal-use-only. Although SBIJ has made every effort to ensure the accuracy of the information as at the date of publication, SBIJ does not give any warranty as to the accuracy, reliability or completeness of the information. To the extent permitted by law, SBIJ and its employees, officers and contractors shall not be liable for any loss or damage arising in any way (including by way of negligence) from or in connection with any information provided or omitted or from anyone acting or refraining to act in reliance on this information.

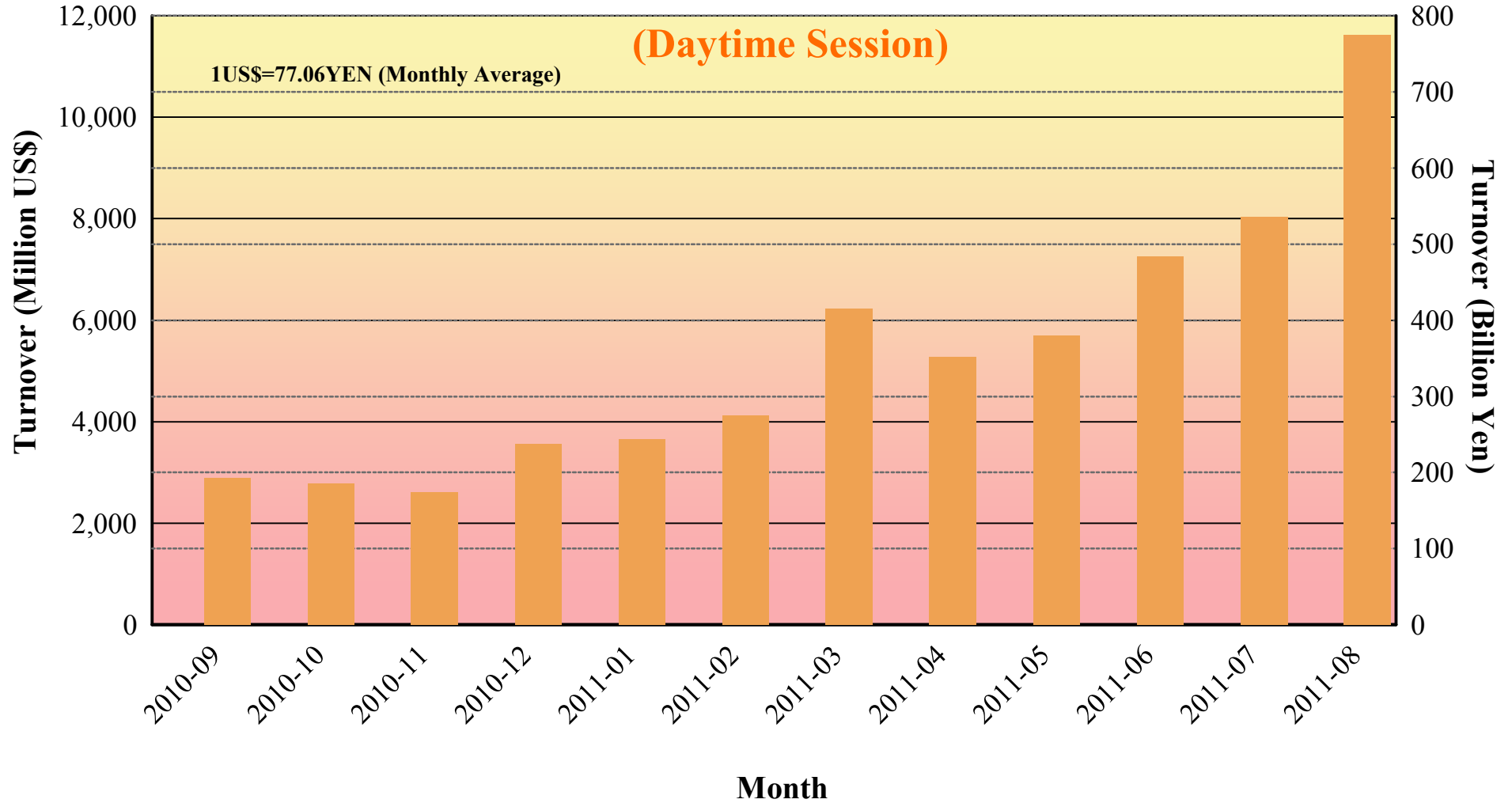
Daily Turnover of Daytime Session



Average Daily Turnover by Month

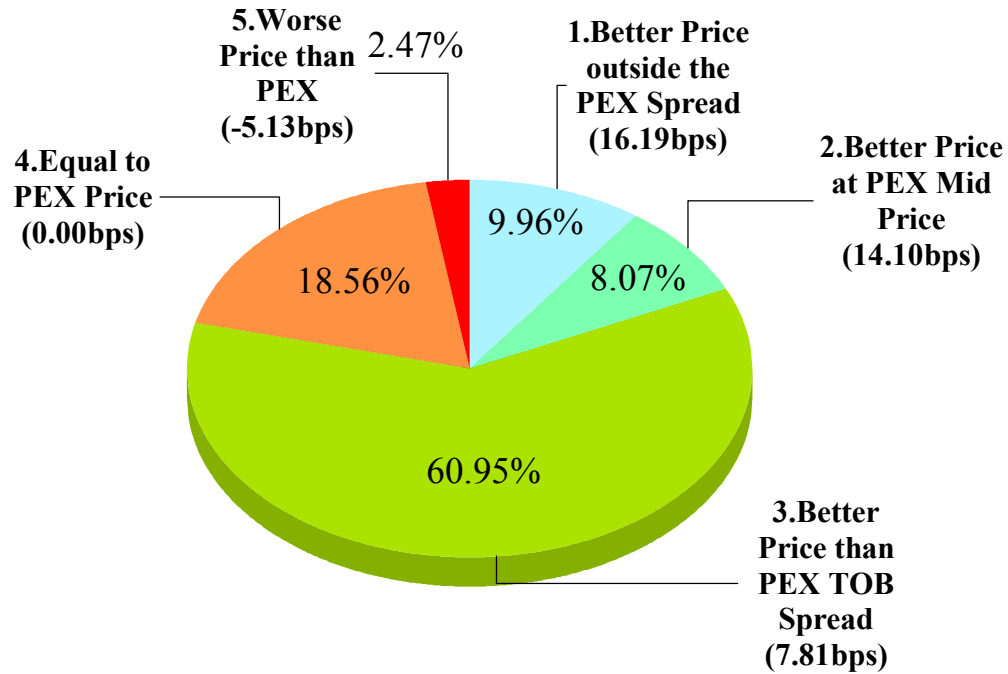


Total Turnover by Month

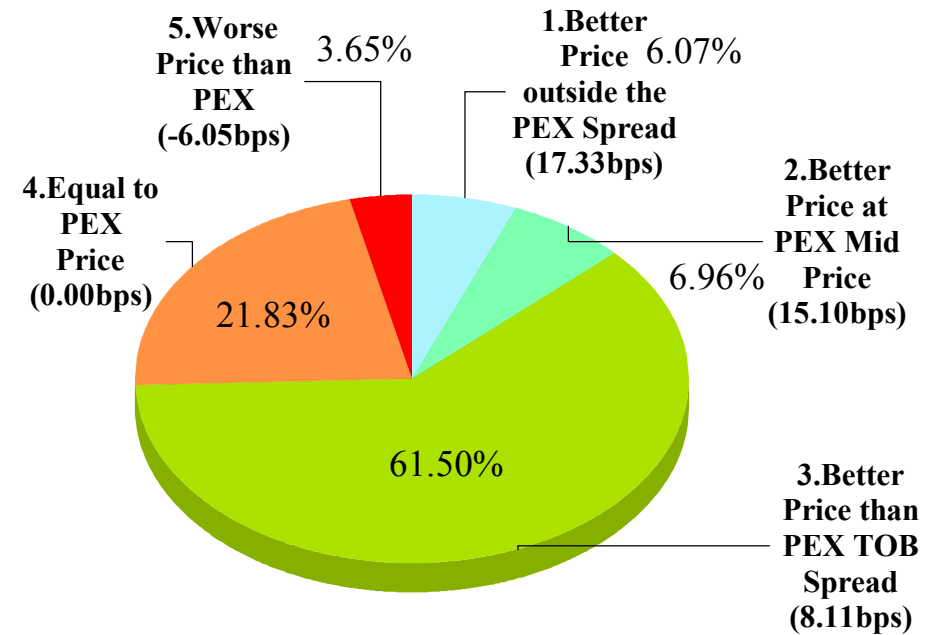


"Daytime Session" Execution

Nikkei 225 (Aug-2011)



SELL



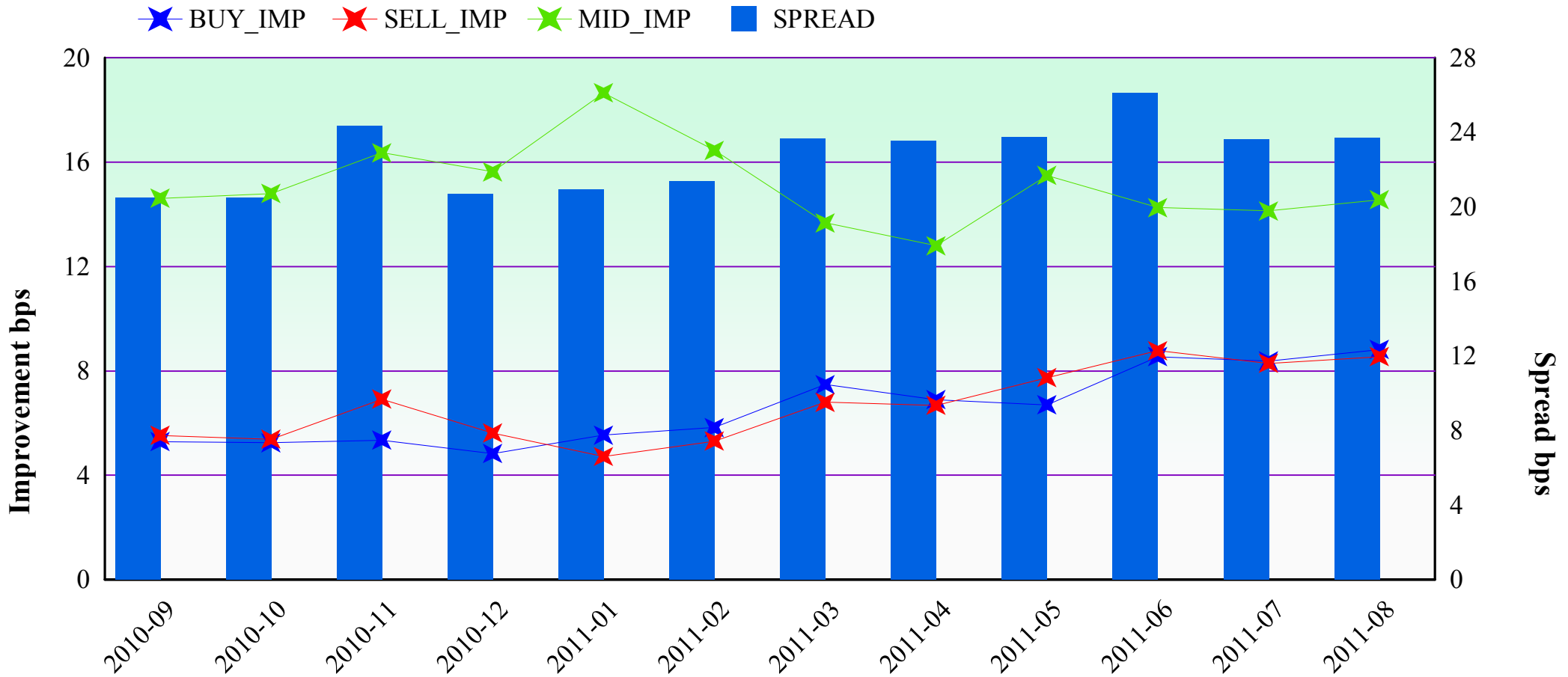
BUY

Note1: Excluded the executions from before 9AM, lunch break, and after 3PM

Note2: Avg. Price Improvement are based on Japannext vs. Primary Exchange prices

Improvement of Execution (bps)

Nikkei 225 (Aug-2011)



Note1: Excluded the executions from before 9AM, lunch break, and after 3PM

Note2: Avg. Price Improvements are based on Japannext vs. Primary Exchange prices

Monthly Turnover Top 50 Names in Daytime session

(Aug-2011)

1US\$=77.06YEN (Monthly Average)

	SYMBOL	DESCRIPTION	Turnover (Million US\$)	Market-share (%)
1	7203	TOYOTA	330.11	3.66
2	8306	MUFG	276.86	4.46
3	7751	CANON	267.96	4.50
4	9984	SOFTBNK	254.70	4.52
5	8411	MIZUHO	240.93	5.89
6	7201	NISSAN	208.09	4.04
7	4502	TAKEDAP	193.40	6.91
8	2914	JT	184.81	4.90
9	7267	HONDA	183.71	3.01
10	6954	FANUC	180.91	2.83
11	9433	KDDI	135.44	4.44
12	9432	NTT	131.13	5.22
13	4523	EISAI	127.44	6.55
14	8604	NOMRAHD	115.50	4.48
15	6501	HITACHI	114.19	2.30
16	6301	KOMATSU	105.00	2.22
17	6752	PANASNIC	102.37	4.53
18	8316	SMFG	101.77	2.01
19	6502	TOSHIBA	98.23	2.44
20	8031	MITSUI	95.99	2.96
21	8058	MITBISI	90.71	2.35
22	6758	SONY	86.10	2.22
23	7011	MHI	84.69	3.12
24	8035	TKOELCN	83.38	3.60
25	1605	INPEX	82.25	3.89

	SYMBOL	DESCRIPTION	Turnover (Million US\$)	Market-share (%)
26	4063	SINETUC	82.23	3.71
27	6971	KYOCERA	79.26	3.59
28	8002	MARBENI	73.90	3.36
29	5020	JX	73.28	4.36
30	8001	ITOCHU	73.26	3.46
31	9020	JR EAST	69.49	3.68
32	7974	NINTEND	67.19	1.13
33	8591	ORIX	66.03	2.69
34	9437	DOCOMO	65.89	2.65
35	6503	MELCO	65.39	3.02
36	9831	YAMDADK	65.16	4.08
37	2432	DENA	64.76	1.15
38	3402	TORAY	61.64	3.85
39	7202	ISUZU	61.46	3.74
40	5405	SMI-MTI	56.11	4.68
41	8267	AEON	55.75	5.33
42	5401	NPSTEEL	55.41	3.48
43	8053	SMITOMO	54.18	2.75
44	6762	TDK	52.50	2.77
45	7012	KHI	51.29	3.32
46	8308	RESONA	50.78	3.50
47	4188	MTBCM HD	50.75	3.69
48	8802	MTB-EST	50.41	2.92
49	6326	KUBOTA	49.44	4.61
50	9101	NYKLINE	47.56	3.65

Improvement of Monthly Turnover for Top 25 Names (Aug-2011)

(Daytime Session)

	RIC	NAME	Sell Executions							Improve Avg. BPS	Buy Executions							Improve Avg. BPS
			Worse(A)		Equal(B)		Better(C)		(B) + (C)		Worse(A)		Equal(B)		Better(C)		(B) + (C)	
1	7203.T	TOYOTA	246	3.17%	1,480	19.08%	6,032	77.75%	96.83%	3.63	288	4.16%	1,861	26.88%	4,775	68.96%	95.84%	4.05
2	8306.T	MUFG	99	0.76%	1,416	10.90%	11,476	88.34%	99.24%	10.47	125	0.85%	2,473	16.77%	12,151	82.39%	99.15%	8.85
3	7751.T	CANON	98	1.62%	813	13.46%	5,131	84.92%	98.38%	4.85	105	1.67%	837	13.29%	5,356	85.04%	98.33%	5.63
4	9984.T	SOFTBNK	334	5.54%	1,181	19.58%	4,518	74.89%	94.46%	3.41	476	8.96%	1,392	26.20%	3,445	64.84%	91.04%	3.17
5	8411.T	MIZUHO	2	0.01%	1,214	5.82%	19,633	94.17%	99.99%	30.65	12	0.05%	940	4.02%	22,440	95.93%	99.95%	32.69
6	7201.T	NISSAN	143	1.41%	1,374	13.53%	8,640	85.06%	98.59%	5.66	233	1.96%	1,954	16.45%	9,688	81.58%	98.04%	5.29
7	4502.T	TAKEDAP	21	0.45%	507	10.77%	4,180	88.79%	99.55%	4.44	37	0.74%	479	9.61%	4,470	89.65%	99.26%	4.60
8	2914.T	JT	79	1.90%	515	12.39%	3,563	85.71%	98.10%	6.42	102	1.81%	760	13.47%	4,780	84.72%	98.19%	7.91
9	7267.T	HONDA	325	5.28%	998	16.23%	4,828	78.49%	94.72%	4.22	415	8.21%	1,273	25.18%	3,367	66.61%	91.79%	3.74
10	6954.T	FANUC	200	5.34%	923	24.64%	2,623	70.02%	94.66%	4.17	395	9.90%	1,082	27.11%	2,514	62.99%	90.10%	3.78
11	9433.T	KDDI	46	1.56%	234	7.92%	2,674	90.52%	98.44%	6.12	81	2.41%	292	8.70%	2,983	88.89%	97.59%	5.20
12	9432.T	NTT	70	1.81%	430	11.13%	3,363	87.06%	98.19%	5.12	71	1.60%	530	11.92%	3,845	86.48%	98.40%	5.25
13	4523.T	EISAI	26	0.75%	379	10.93%	3,061	88.32%	99.25%	5.14	64	2.02%	440	13.87%	2,668	84.11%	97.98%	5.10
14	8604.T	NOMRAHD	66	0.80%	803	9.73%	7,381	89.47%	99.20%	11.47	32	0.27%	2,224	18.91%	9,505	80.82%	99.73%	11.30
15	6501.T	HITACHI	31	0.92%	301	8.89%	3,055	90.20%	99.08%	8.67	38	1.10%	386	11.15%	3,038	87.75%	98.90%	8.17
16	6301.T	KOMATSU	361	5.07%	2,336	32.84%	4,417	62.09%	94.93%	3.23	549	7.89%	2,485	35.73%	3,921	56.38%	92.11%	2.79
17	6752.T	PANASONIC	224	2.61%	1,407	16.38%	6,958	81.01%	97.39%	4.85	133	1.40%	2,159	22.70%	7,219	75.90%	98.60%	4.66
18	8316.T	SMFG	250	3.98%	1,888	30.04%	4,147	65.98%	96.02%	2.61	300	5.92%	1,994	39.37%	2,771	54.71%	94.08%	2.47
19	6502.T	TOSHIBA	30	0.92%	498	15.22%	2,745	83.87%	99.08%	10.22	81	2.14%	667	17.64%	3,033	80.22%	97.86%	10.19
20	8031.T	MITSUMI	286	3.86%	2,831	38.26%	4,283	57.88%	96.14%	4.33	431	5.79%	3,706	49.83%	3,301	44.38%	94.21%	3.78
21	8058.T	MITBISI	230	4.09%	1,800	31.99%	3,596	63.92%	95.91%	3.46	393	7.00%	2,545	45.34%	2,675	47.66%	93.00%	2.79
22	6758.T	SONY	234	3.56%	2,194	33.40%	4,141	63.04%	96.44%	3.50	370	4.58%	3,300	40.83%	4,412	54.59%	95.42%	3.52
23	7011.T	MHI	19	0.78%	342	14.03%	2,077	85.19%	99.22%	10.53	73	2.37%	592	19.20%	2,418	78.43%	97.63%	10.10
24	8035.T	TKOELCN	129	3.65%	591	16.70%	2,818	79.65%	96.35%	5.41	86	2.67%	381	11.84%	2,751	85.49%	97.33%	4.68
25	1605.T	INPEX	87	3.17%	351	12.80%	2,305	84.03%	96.83%	5.57	30	1.30%	266	11.57%	2,003	87.12%	98.70%	4.69

Note1: Excluded the executions from before 9AM, lunch break, and after 3PM

Note2: Avg. Price Improvement are based on Japannext vs. Primary Exchange prices