

Monthly Statistics

Dec-2011

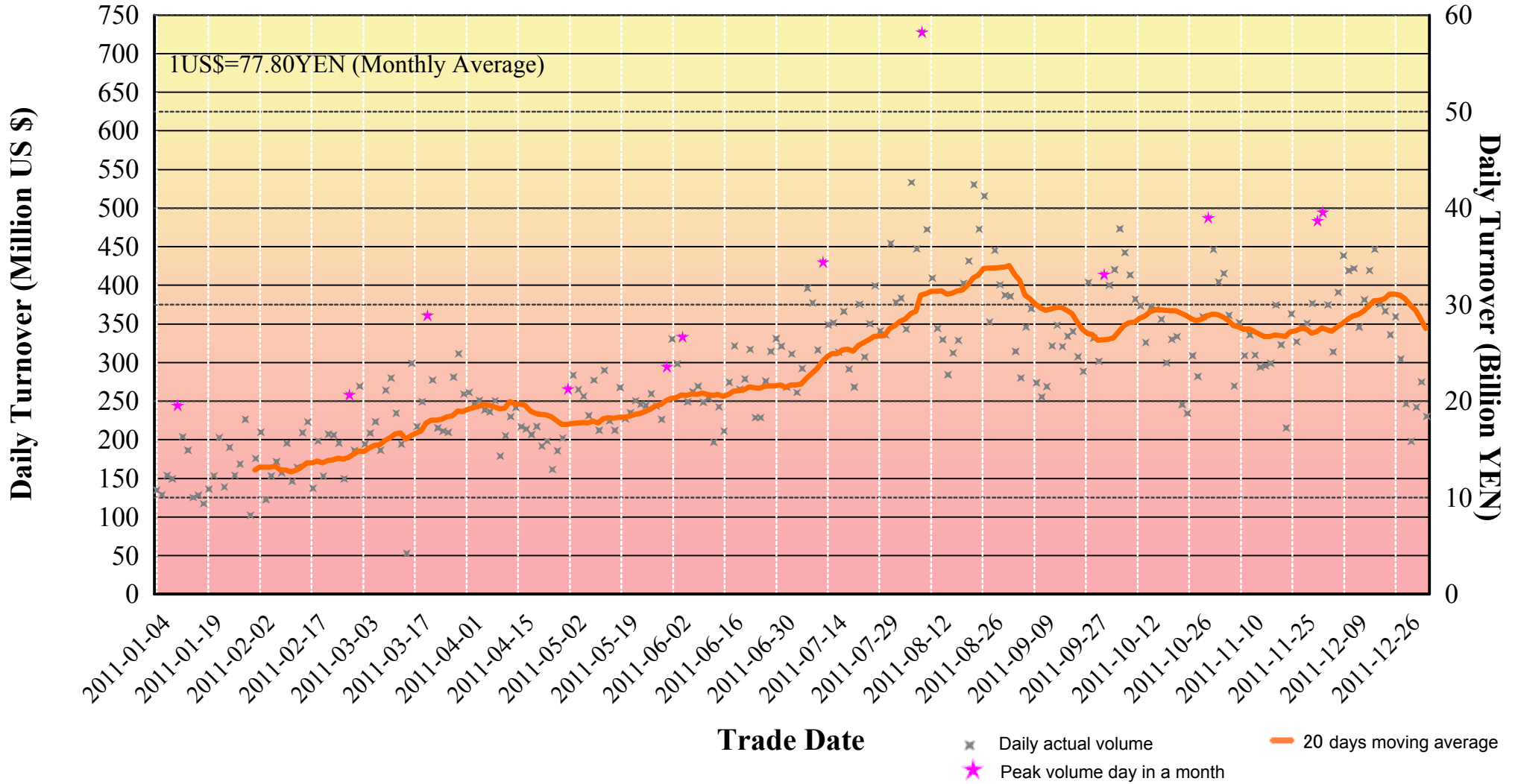
Japannext PTS

SBI Japannext Co., Ltd

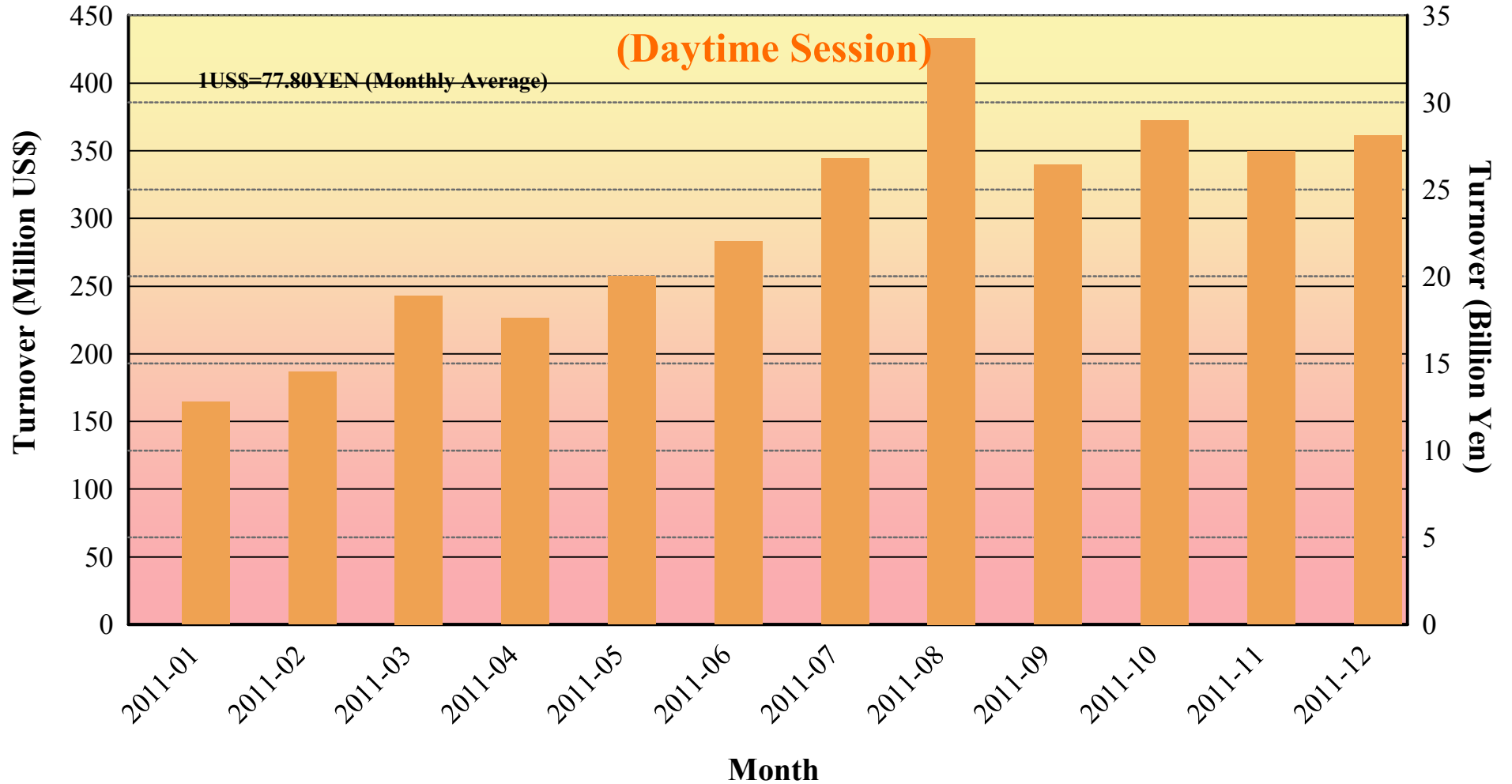
Disclaimer

Information provided is for reference purposes only and does not constitute financial product advice nor is constituted as an offer to sell or solicitation to buy any security. The ownership and intellectual property rights of this information are solely and exclusively belong to SBI Japannext Co.,Ltd.(“SBIJ”). According users are permitted to access and use the Information for their own personal, non-commercial and internal-use-only. Although SBIJ has made every effort to ensure the accuracy of the information as at the date of publication, SBIJ does not give any warranty as to the accuracy, reliability or completeness of the information. To the extent permitted by law, SBIJ and its employees, officers and contractors shall not be liable for any loss or damage arising in any way (including by way of negligence) from or in connection with any information provided or omitted or from anyone acting or refraining to act in reliance on this information.

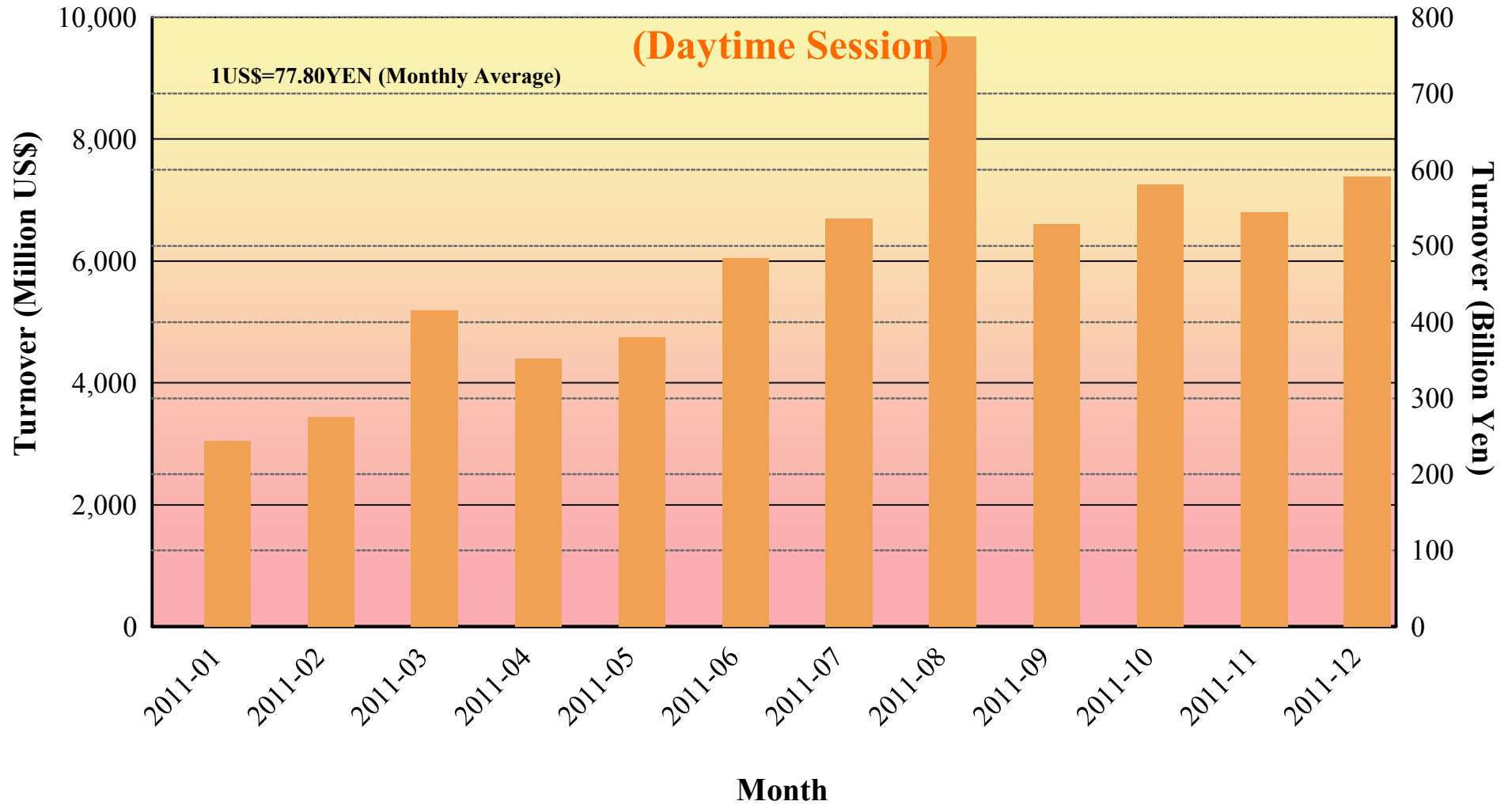
Daily Turnover of Daytime Session



Average Daily Turnover by Month

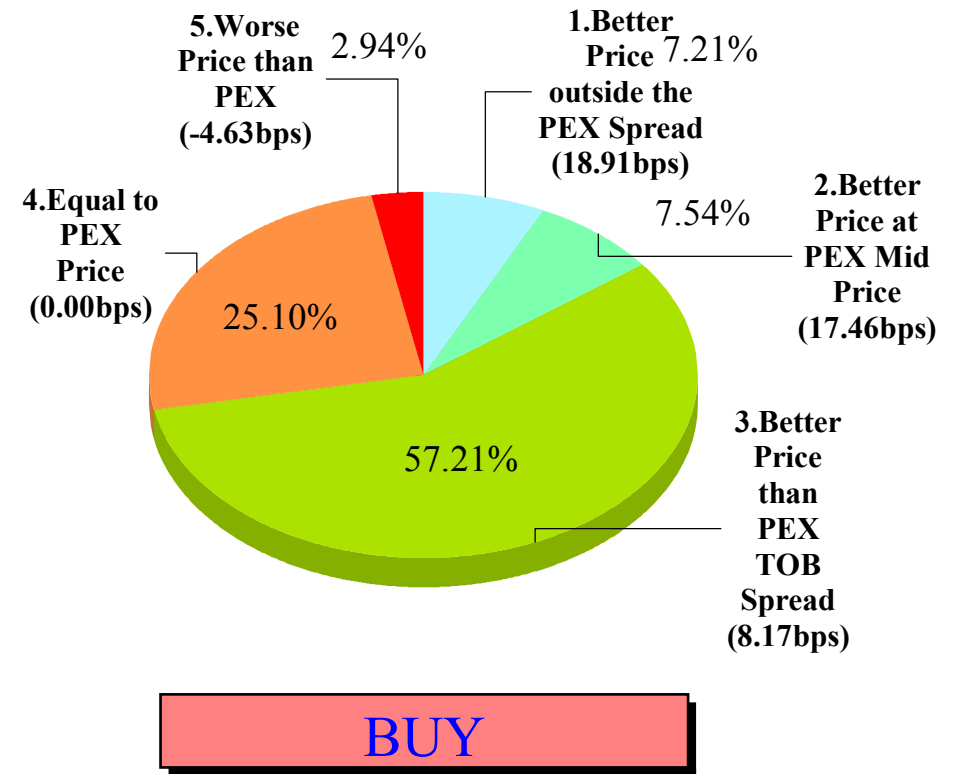
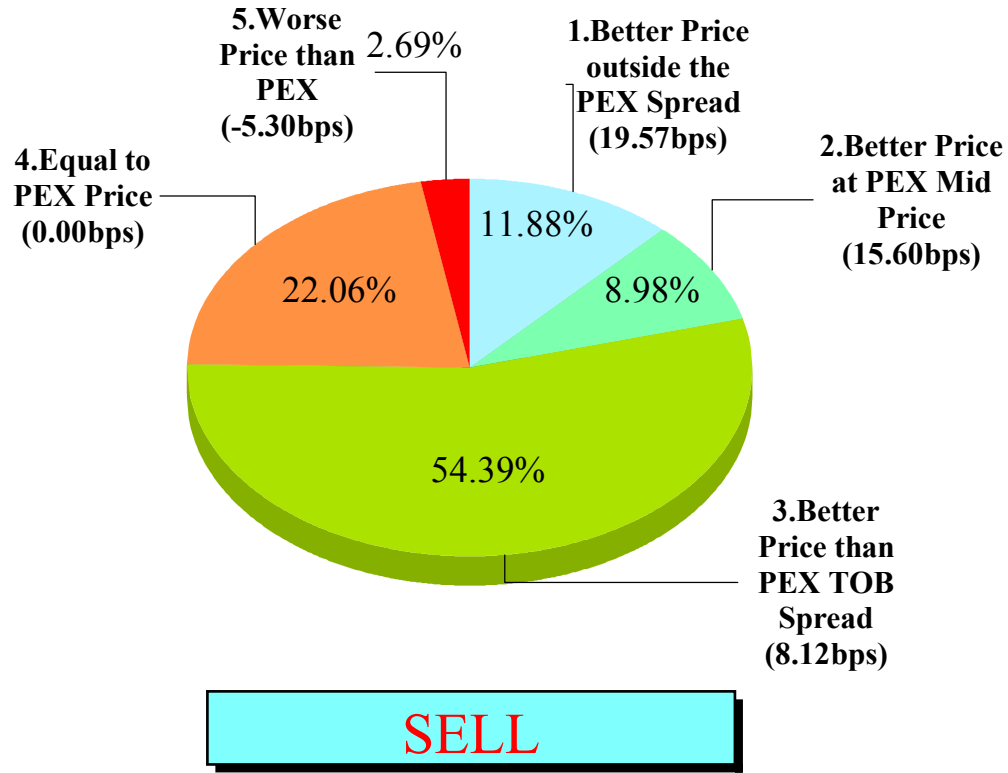


Total Turnover by Month



"Daytime Session" Execution

Nikkei 225 (Dec-2011)

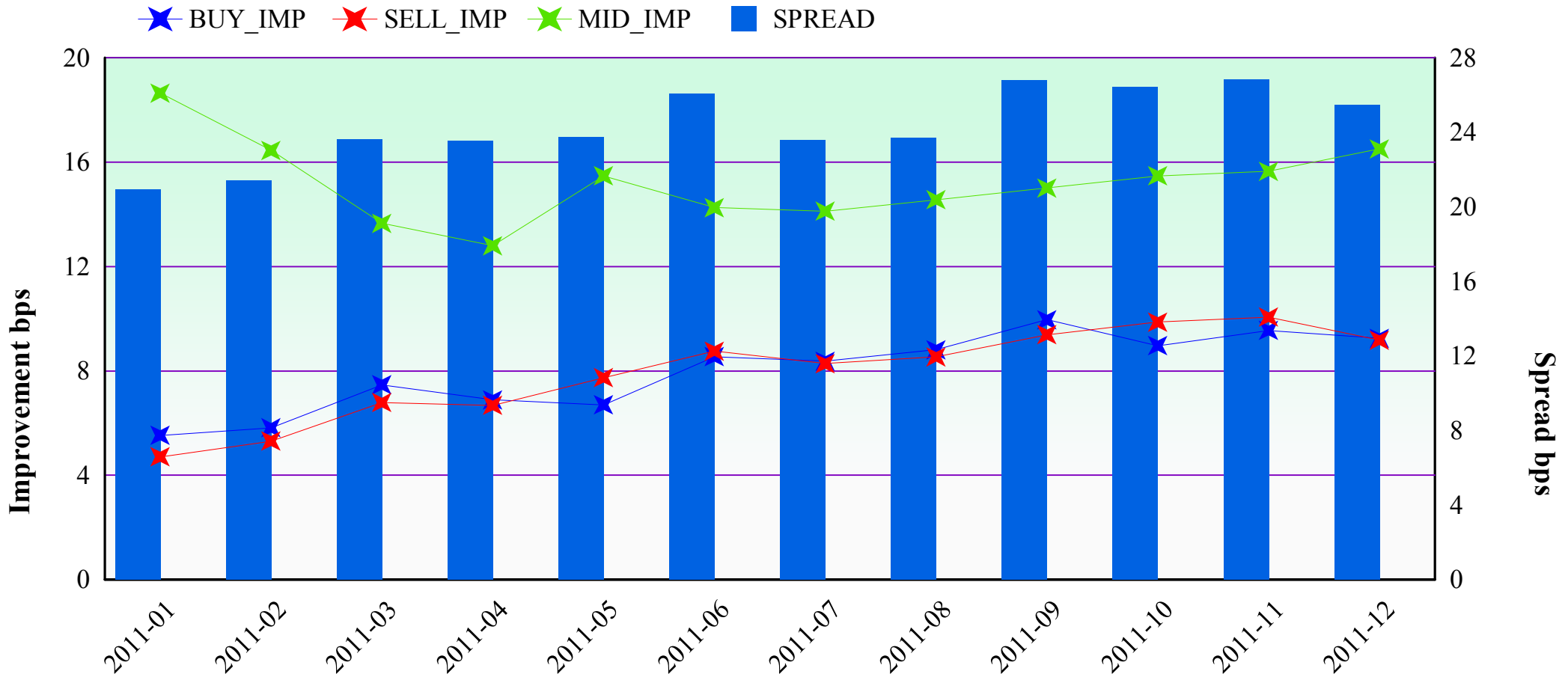


Note1: Excluded the executions from before 9AM, lunch break, and after 3PM

Note2: Avg. Price Improvement are based on Japannext vs. Primary Exchange prices

Improvement of Execution (bps)

Nikkei 225 (Dec-2011)



Note1: Excluded the executions from before 9AM, lunch break, and after 3PM

Note2: Avg. Price Improvements are based on Japannext vs. Primary Exchange prices

Monthly Turnover Top 50 Names in Daytime session

(Dec-2011)

1US\$=77.80YEN (Monthly Average)

	SYMBOL	DESCRIPTION	Turnover (Million US\$)	Market-share (%)
1	7201	NISSAN	191.89	6.00
2	8411	MIZUHO	165.97	8.46
3	7751	CANON	155.04	6.19
4	8306	MUFG	147.64	4.71
5	7203	TOYOTA	140.91	3.31
6	9432	NTT	134.35	7.16
7	8316	SMFG	133.01	3.14
8	6954	FANUC	126.17	3.18
9	8604	NOMRAHD	99.89	5.99
10	7267	HONDA	86.00	2.65
11	6301	KOMATSU	85.77	2.87
12	6752	PANASONIC	84.72	5.45
13	9983	FASTRET	80.35	3.29
14	8058	MITBISI	75.39	2.81
15	6753	SHARP	74.65	5.01
16	8031	MITSUI	73.36	2.86
17	6758	SONY	72.41	3.14
18	8035	TKOELCN	72.07	4.36
19	6502	TOSHIBA	67.78	2.86
20	2914	JT	66.59	3.83
21	6501	HITACHI	66.26	3.51
22	8802	MTB-EST	66.24	5.08
23	9433	KDDI	62.37	2.94
24	8001	ITOCHU	60.50	4.59
25	6971	KYOCERA	59.33	3.86

	SYMBOL	DESCRIPTION	Turnover (Million US\$)	Market-share (%)
26	4503	ASTELLAS	58.70	4.37
27	6503	MELCO	56.89	4.65
28	8053	SMITOMO	55.72	3.99
29	8002	MARBENI	55.10	3.46
30	9984	SOFTBANK	54.63	1.61
31	3382	7&I-HD	50.46	3.93
32	8801	MTI-FU	50.46	5.14
33	6594	NIDEC	50.13	5.68
34	9020	JR EAST	50.08	4.23
35	4063	SINETUC	49.41	3.81
36	8591	ORIX	48.50	4.38
37	9831	YAMADAK	48.02	6.43
38	4523	EISAI	47.00	5.09
39	9437	DOCOMO	44.78	2.75
40	4452	KAO	44.40	3.86
41	6326	KUBOTA	43.28	5.17
42	3402	TORAY	43.09	5.53
43	7974	NINTEND	42.23	2.40
44	5201	ASA-GLS	40.49	5.02
45	9104	MTI-OSK	38.67	1.84
46	2503	KIRIN HD	38.46	6.56
47	1963	JGC	38.39	4.40
48	4502	TAKEDAP	38.30	1.62
49	9101	NYKLINE	37.99	3.46
50	5020	JX	37.90	3.81

Improvement of Monthly Turnover for Top 25 Names (Dec-2011)

(Daytime Session)

	RIC	NAME	Sell Executions							Improve Avg. BPS	Buy Executions							Improve Avg. BPS
			Worse(A)		Equal(B)		Better(C)		(B) + (C)		Worse(A)		Equal(B)		Better(C)		(B) + (C)	
1	7201.T	NISSAN	197	1.75%	2,244	19.91%	8,828	78.34%	98.25%	5.79	144	1.20%	2,034	16.97%	9,808	81.83%	98.80%	5.18
2	8411.T	MIZUHO	22	0.14%	426	2.76%	15,012	97.10%	99.86%	42.08	36	0.12%	2,473	8.07%	28,145	91.82%	99.88%	30.26
3	7751.T	CANON	25	0.57%	423	9.59%	3,962	89.84%	99.43%	4.83	36	0.68%	768	14.60%	4,457	84.72%	99.32%	4.37
4	8306.T	MUFG	38	0.44%	584	6.74%	8,040	92.82%	99.56%	12.20	70	0.71%	1,289	13.06%	8,512	86.23%	99.29%	9.52
5	7203.T	TOYOTA	637	8.22%	2,996	38.67%	4,115	53.11%	91.78%	2.21	558	8.38%	2,949	44.30%	3,150	47.32%	91.62%	2.12
6	9432.T	NTT	28	0.69%	318	7.81%	3,727	91.51%	99.31%	4.38	28	0.67%	565	13.47%	3,603	85.87%	99.33%	4.24
7	8316.T	SMFG	400	4.32%	3,754	40.53%	5,109	55.15%	95.68%	2.80	360	6.31%	2,385	41.78%	2,963	51.91%	93.69%	2.36
8	6954.T	FANUC	119	5.90%	727	36.03%	1,172	58.08%	94.10%	4.06	194	5.29%	1,055	28.76%	2,419	65.95%	94.71%	4.10
9	8604.T	NOMRAHD	74	0.92%	990	12.32%	6,970	86.76%	99.08%	18.30	105	0.79%	2,413	18.09%	10,824	81.13%	99.21%	13.21
10	7267.T	HONDA	448	7.92%	1,939	34.26%	3,272	57.82%	92.08%	2.82	583	9.94%	2,259	38.52%	3,022	51.53%	90.06%	2.57
11	6301.T	KOMATSU	350	7.14%	1,818	37.09%	2,734	55.77%	92.86%	3.10	474	6.82%	2,576	37.05%	3,902	56.13%	93.18%	2.99
12	6752.T	PANASONIC	289	2.93%	2,122	21.54%	7,441	75.53%	97.07%	6.04	232	1.92%	2,361	19.52%	9,503	78.56%	98.08%	4.90
13	9983.T	FASTRET	74	5.52%	181	13.51%	1,085	80.97%	94.48%	3.18	134	4.84%	462	16.67%	2,175	78.49%	95.16%	2.78
14	8058.T	MITBISI	282	4.99%	2,196	38.85%	3,174	56.16%	95.01%	3.58	447	7.34%	2,441	40.07%	3,204	52.59%	92.66%	3.19
15	6753.T	SHARP	29	1.21%	555	23.09%	1,820	75.71%	98.79%	5.65	36	1.29%	410	14.70%	2,343	84.01%	98.71%	5.52
16	8031.T	MITSUI	188	3.61%	1,978	38.02%	3,037	58.37%	96.39%	4.83	161	3.08%	2,518	48.15%	2,551	48.78%	96.92%	4.47
17	6758.T	SONY	365	6.38%	2,089	36.50%	3,269	57.12%	93.62%	4.06	329	4.97%	2,583	39.01%	3,709	56.02%	95.03%	4.03
18	8035.T	TKOELCN	57	2.22%	582	22.66%	1,929	75.12%	97.78%	4.89	62	1.58%	398	10.12%	3,473	88.30%	98.42%	4.42
19	6502.T	TOSHIBA	27	0.86%	726	23.03%	2,400	76.12%	99.14%	10.25	24	0.72%	514	15.44%	2,791	83.84%	99.28%	10.34
20	2914.T	JT	58	2.18%	277	10.43%	2,322	87.39%	97.82%	3.91	47	1.79%	231	8.78%	2,352	89.43%	98.21%	3.78
21	6501.T	HITACHI	46	1.85%	264	10.62%	2,175	87.53%	98.15%	7.34	98	2.97%	342	10.36%	2,860	86.67%	97.03%	8.19
22	8802.T	MTB-EST	77	3.72%	342	16.52%	1,651	79.76%	96.28%	4.66	81	4.68%	302	17.45%	1,348	77.87%	95.32%	3.27
23	9433.T	KDDI	36	2.38%	193	12.74%	1,286	84.88%	97.62%	4.56	39	1.85%	166	7.86%	1,907	90.29%	98.15%	3.50
24	8001.T	ITOCHU	76	1.62%	1,021	21.75%	3,598	76.63%	98.38%	5.43	95	1.54%	1,543	24.98%	4,538	73.48%	98.46%	4.80
25	6971.T	KYOCERA	25	1.52%	350	21.33%	1,266	77.15%	98.48%	6.34	28	1.22%	281	12.23%	1,988	86.55%	98.78%	4.88

Note1: Excluded the executions from before 9AM, lunch break, and after 3PM

Note2: Avg. Price Improvement are based on Japannext vs. Primary Exchange prices