

# SBI Japannext Weekly Statistics

## 11-April-2011

### *Japannext PTS*

---

*SBI Japannext Co., Ltd*

#### Disclaimer

Information provided is for reference purposes and does not constitute financial product advice nor is construed as an offer to sell or the solicitation of an offer to buy any security. The ownership and the intellectual property rights of this information solely and exclusively belong to SBI Japannext Co.,Ltd.( "SBIJ") . Accordingly users are permitted to get an access and use of the Information for their own personal, non-commercial and internal-use-only. Although SBIJ has made every effort to ensure the accuracy of the information as at the date of publication, SBIJ does not give any warranty or representation as to the accuracy, reliability or completeness of the information. To the extent permitted by law, SBIJ and its employees, officers and contractors shall not be liable for any loss or damage arising in any way (including by way of negligence) from or in connection with any information provided or omitted or from any one acting or refraining to act in reliance on this information.

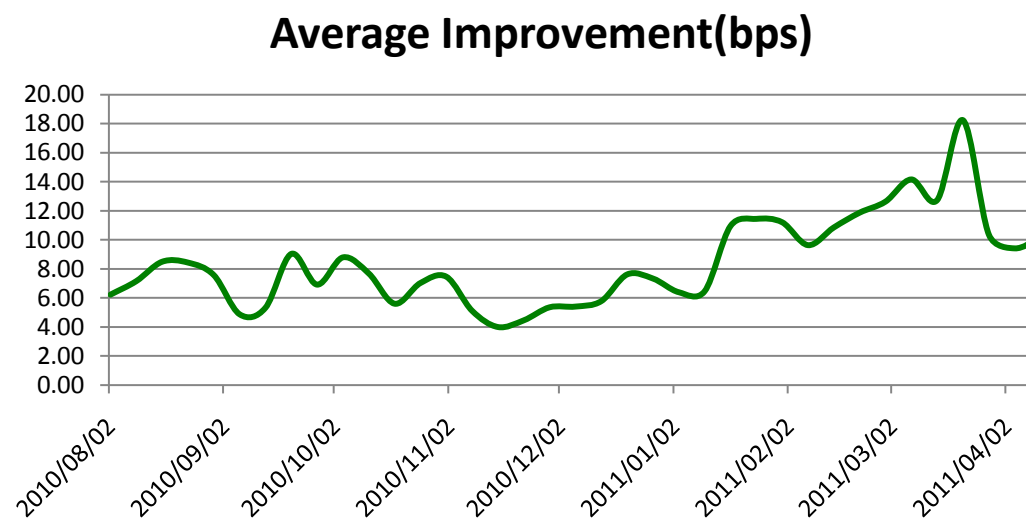
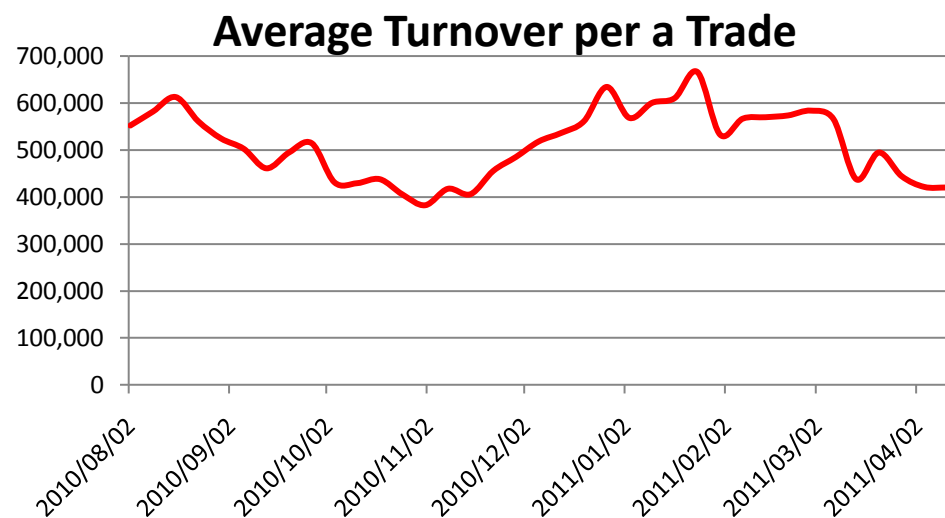
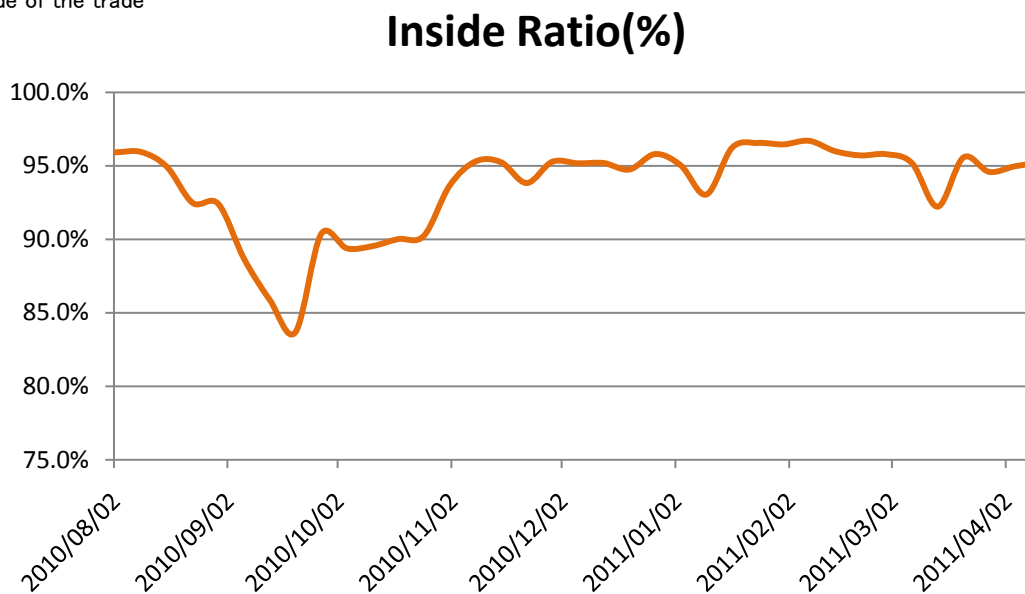
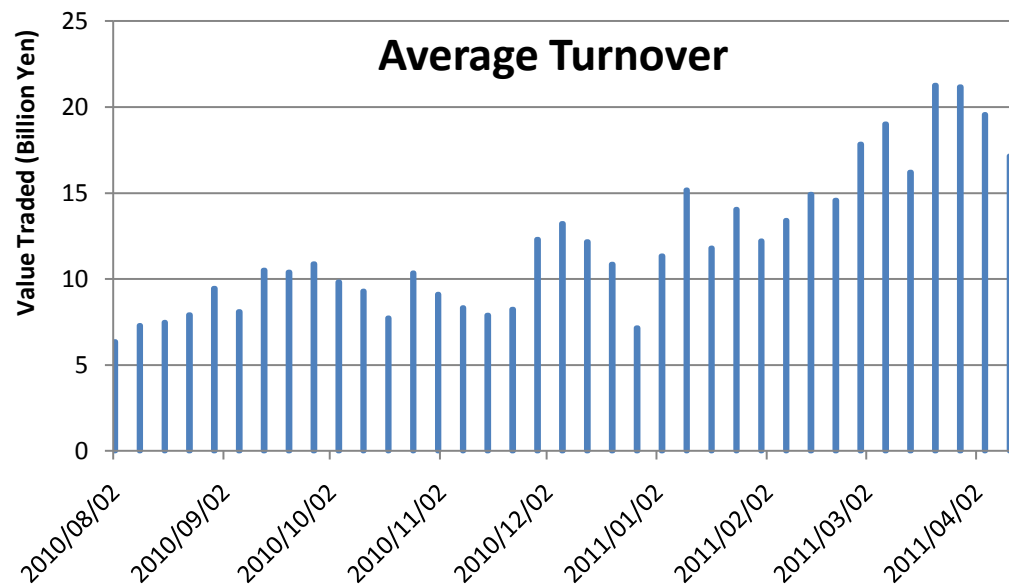


# Daily Average Statistics of The Week

## Daily Average in Week of 11-April-2011

# of Shares Traded	Turnover (Yen)	Universe	No of Trades	% of Inside	Avg Improvement(bps)
29,633,163	17,156,143,177	723	40,861	95.22%	10.14

\*Price improvement is calculated by comparing the execution price against the primary market's best bid for each sell or best offer for each buy at the point of execution and is calculated from the perspective of the Taker side of the trade





# Top 5 Average Turnover of The Week

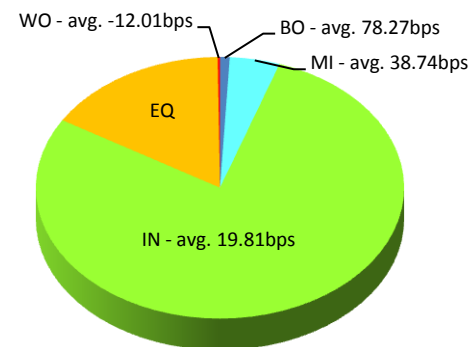
## Weekly Total in Week of 11-April-2011

Symbol	Description	Turnover (yen)	Last Price	Market Shr(%)	Avg Improvement(bps)
8411.T	MIZUHO	3,373,664,240	129	4.89	20.82
7203.T	TOYOTA	2,088,456,500	3,240	1.42	5.02
7267.T	HONDA	2,014,679,670	2,985	1.46	2.64
9984.T	SOFTBNK	1,765,637,150	3,360	1.48	4.35
8306.T	MUFG	1,704,388,450	391	1.38	7.88

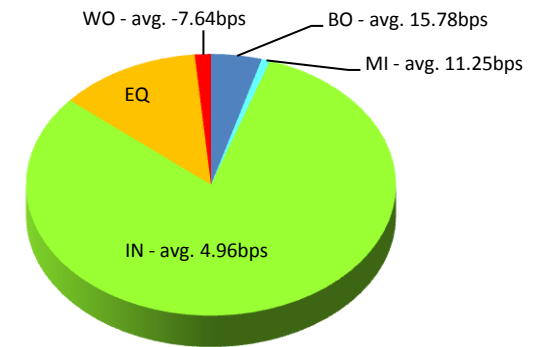
### Execution improvement patterns categorized into 5 groups.

- (1) **Better Outside ("BO")** – better price outside the Primary Exchange spread
- (2) **Mid Price ("MI")** – better price at Primary Exchange mid price
- (3) **Inside BBO ("IN")** – better price inside Primary Exchange BBO excluding mid price
- (4) **Equal ("EQ")** – equal price to Primary Exchange BBO
- (5) **Worse ("WO")** – worse price than Primary Exchange

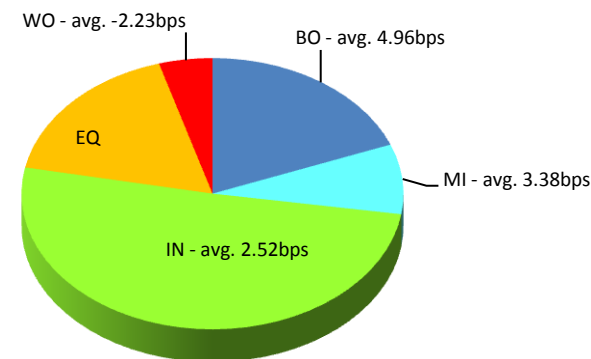
### MIZUHO(8411.T)



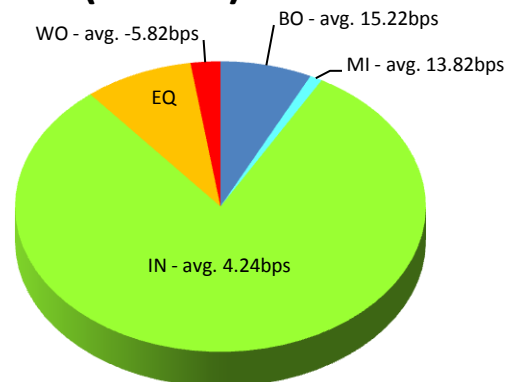
### TOYOTA(7203.T)



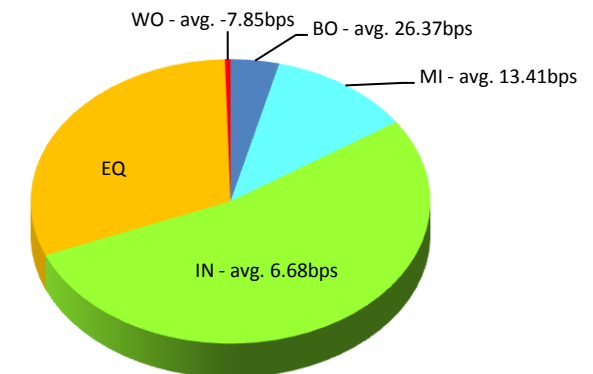
### HONDA(7267.T)



### SOFTBNK(9984.T)



### MUFG(8306.T)



Note1: Excluded the executions from: before 9AM, lunch break, and after 3PM

Note2: Price improvement is calculated by comparing the execution price against the primary market's best bid for each sell or best offer for each buy at the point of execution and is calculated from the perspective of the Taker side of the trade



# Top 5 Average Improvement of The Week\*

\* Weekly Total Turnover > 100 Million Yen

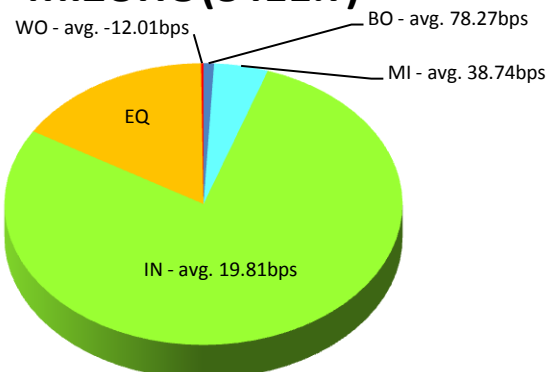
## Weekly Total in Week of 11-April-2011

Symbol	Description	Turnover (yen)	Last Price	Market Shr(%)	Avg Improvement(bps)
8411.T	MIZUHO	3,373,664,240	129	4.89	20.82
9501.T	TEPCO	201,157,080	469	0.05	18.65
7004.T	HIT-ZOS	108,116,250	119	4.22	18.06
5405.T	SMI-MTI	352,647,100	173	2.91	14.95
9107.T	K-LINE	566,293,500	276	3.56	13.77

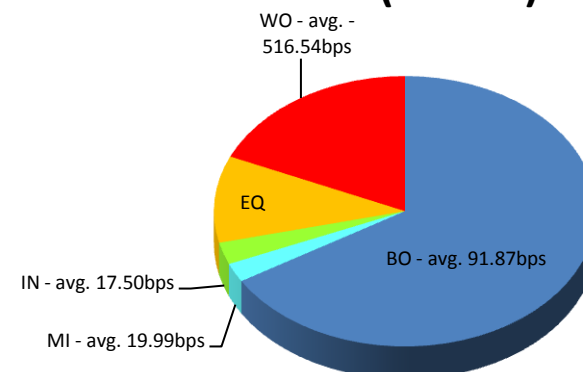
### Execution improvement patterns categorized into 5 groups.

- (1) **Better Outside** (“BO”) – better price outside the Primary Exchange spread
- (2) **Mid Price** (“MI”) – better price at Primary Exchange mid price
- (3) **Inside BBO** (“IN”) – better price inside Primary Exchange BBO excluding mid price
- (4) **Equal** (“EQ”) – equal price to Primary Exchange BBO
- (5) **Worse** (“WO”) – worse price than Primary Exchange

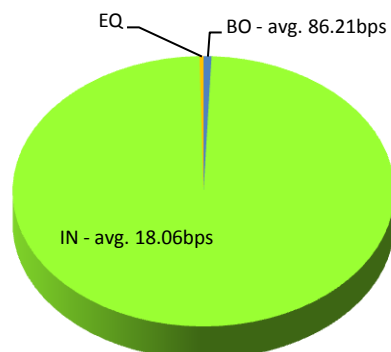
### MIZUHO(8411.T)



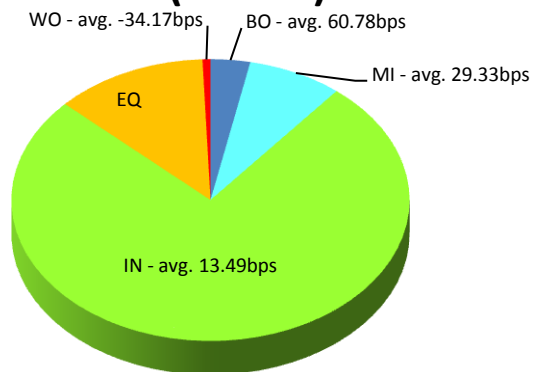
### TEPCO(9501.T)



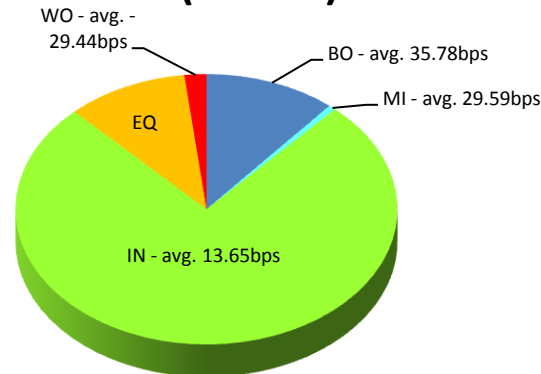
### HIT-ZOS(7004.T)



### SMI-MTI(5405.T)



### K-LINE(9107.T)



Note1: Excluded the executions from: before 9AM, lunch break, and after 3PM

Note2: Price improvement is calculated by comparing the execution price against the primary market's best bid for each sell or best offer for each buy at the point of execution and is calculated from the perspective of the Taker side of the trade



# Top 5 ETFs & REITs of The Week

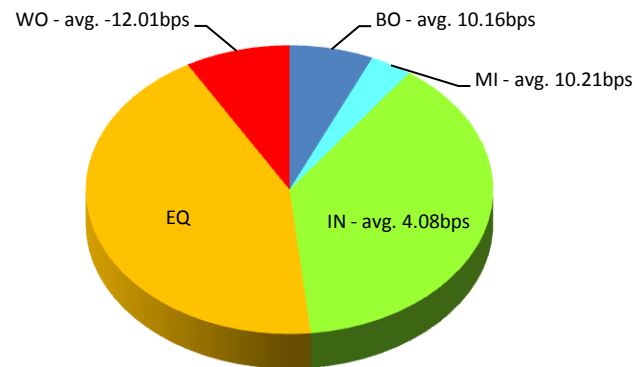
## Weekly Total in Week of 11-April-2011

Symbol	Description	Turnover (yen)	Last Price	Market Shr(%)	Avg Improvement(bps)
1321.OS	225FUND	276,221,382	9,760	1.44	4.57
1330.T	IDXF225	134,949,740	9,820	0.92	5.04
1320.OS	ETF225	98,366,780	9,720	1.71	4.65
1306.T	TOPIX F	13,772,877	865	0.17	12.73
8972.T	KENEDIXR	2,081,350	352,000	0.23	19.37

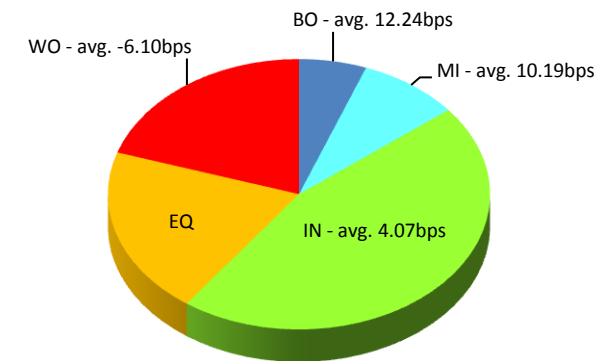
### Execution improvement patterns categorized into 5 groups.

- (1) **Better Outside** ("BO") – better price outside the Primary Exchange spread
- (2) **Mid Price** ("MI") – better price at Primary Exchange mid price
- (3) **Inside BBO** ("IN") – better price inside Primary Exchange BBO excluding mid price
- (4) **Equal** ("EQ") – equal price to Primary Exchange BBO
- (5) **Worse** ("WO") – worse price than Primary Exchange

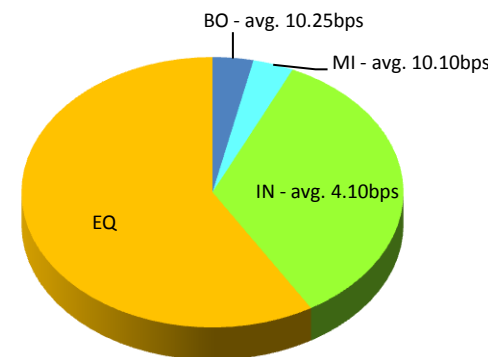
### 225FUND(1321.OS)



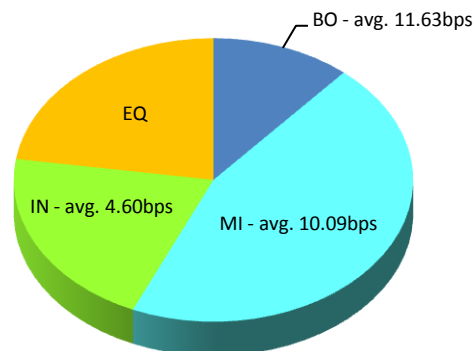
### IDXF225(1330.T)



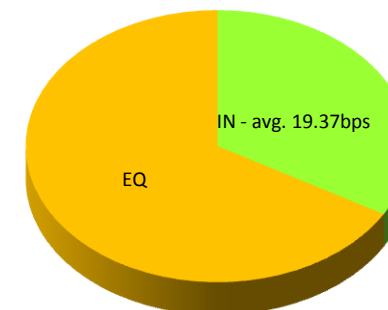
### ETF225(1320.OS)



### TOPIX F(1306.T)



### KENEDIXR(8972.T)



Note1: Excluded the executions from before 9AM, lunch break, and after 3PM

Note2: Price improvement is calculated by comparing the execution price against the primary market's best bid for each sell or best offer for each buy at the point of execution and is calculated from the perspective of the Taker side of the trade