

Japannext PTS Monthly Statistics

January 2012

Registration as a Financial Instrument Business Operator under the Financial Instruments and Exchange Act (FIEA) (including authorization to operate a Proprietary Trading System (PTS)),
Director of Kanto Local Finance Bureau (Kinsho) No.45

TEL: +81-3-4577-4040 FAX:+81-3-3261-1702

WEB Japanese: <http://www.japannext.co.jp/ja>

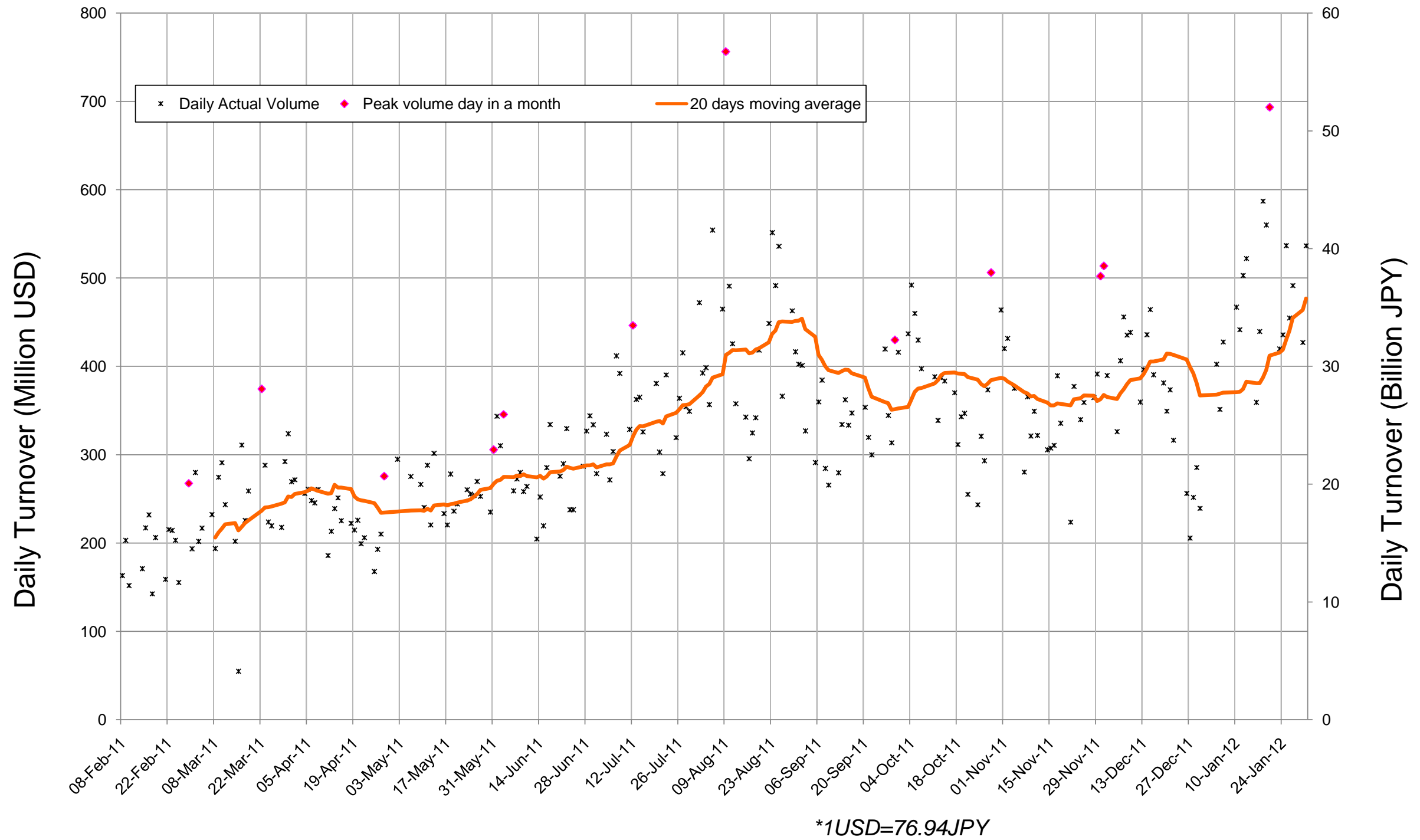
MAIL: ptsbiz@japannext.co.jp

English: <http://www.japannext.co.jp/en>

Disclaimer

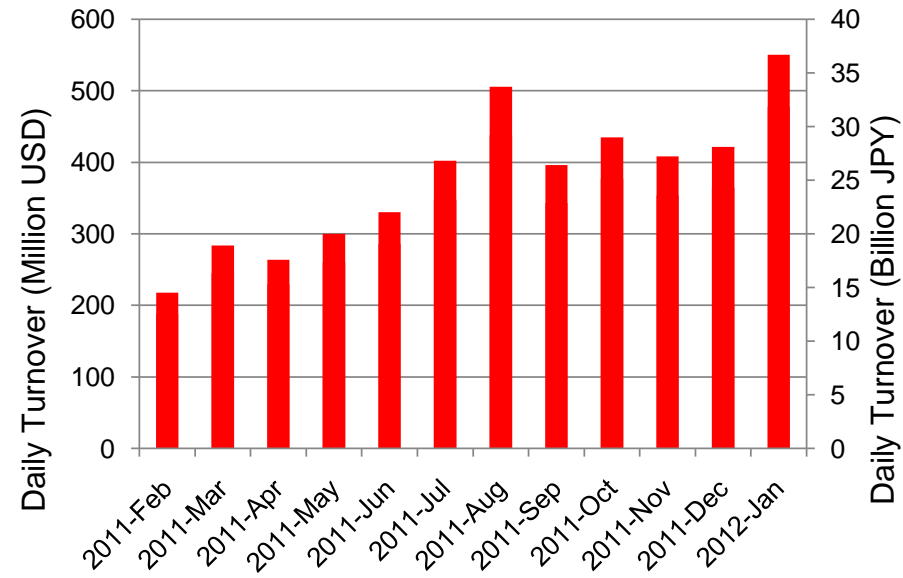
Information provided is for reference purposes only and does not constitute financial product advice nor is constituted as an offer to sell or solicitation to buy any security. The ownership and intellectual property rights of this information are solely and exclusively belong to SBI Japannext Co.,Ltd.("SBIJ") . According users are permitted to access and use the Information for their own personal, non-commercial and internal-use-only. Although SBIJ has made every effort to ensure the accuracy of the information as at the date of publication, SBIJ does not give any warranty as to the accuracy, reliability or completeness of the information. To the extent permitted by law, SBIJ and its employees, officers and contractors shall not be liable for any loss or damage arising in any way (including by way of negligence) from or in connection with any information provided or omitted or from anyone acting or refraining to act in reliance on this information.

Daily Turnover of Daytime Session

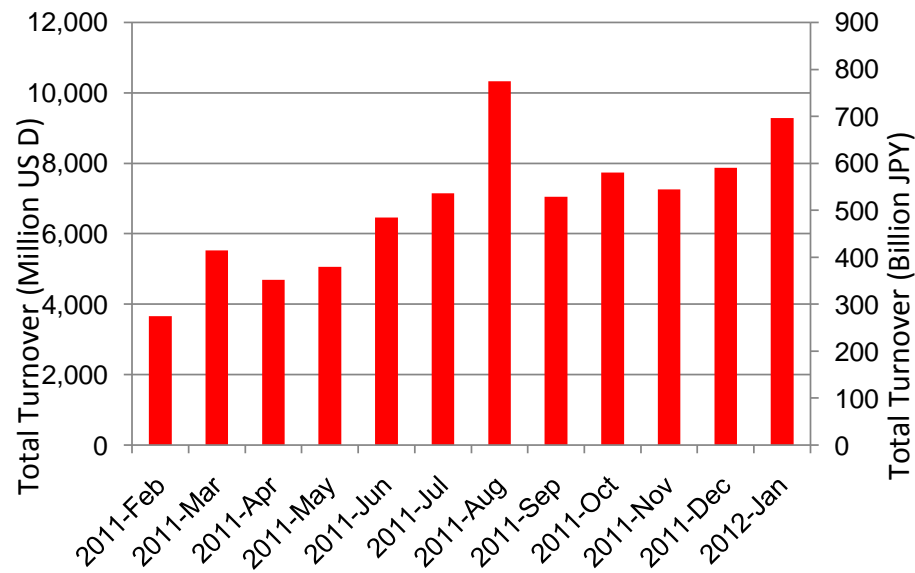


Summary of Turnover by Month

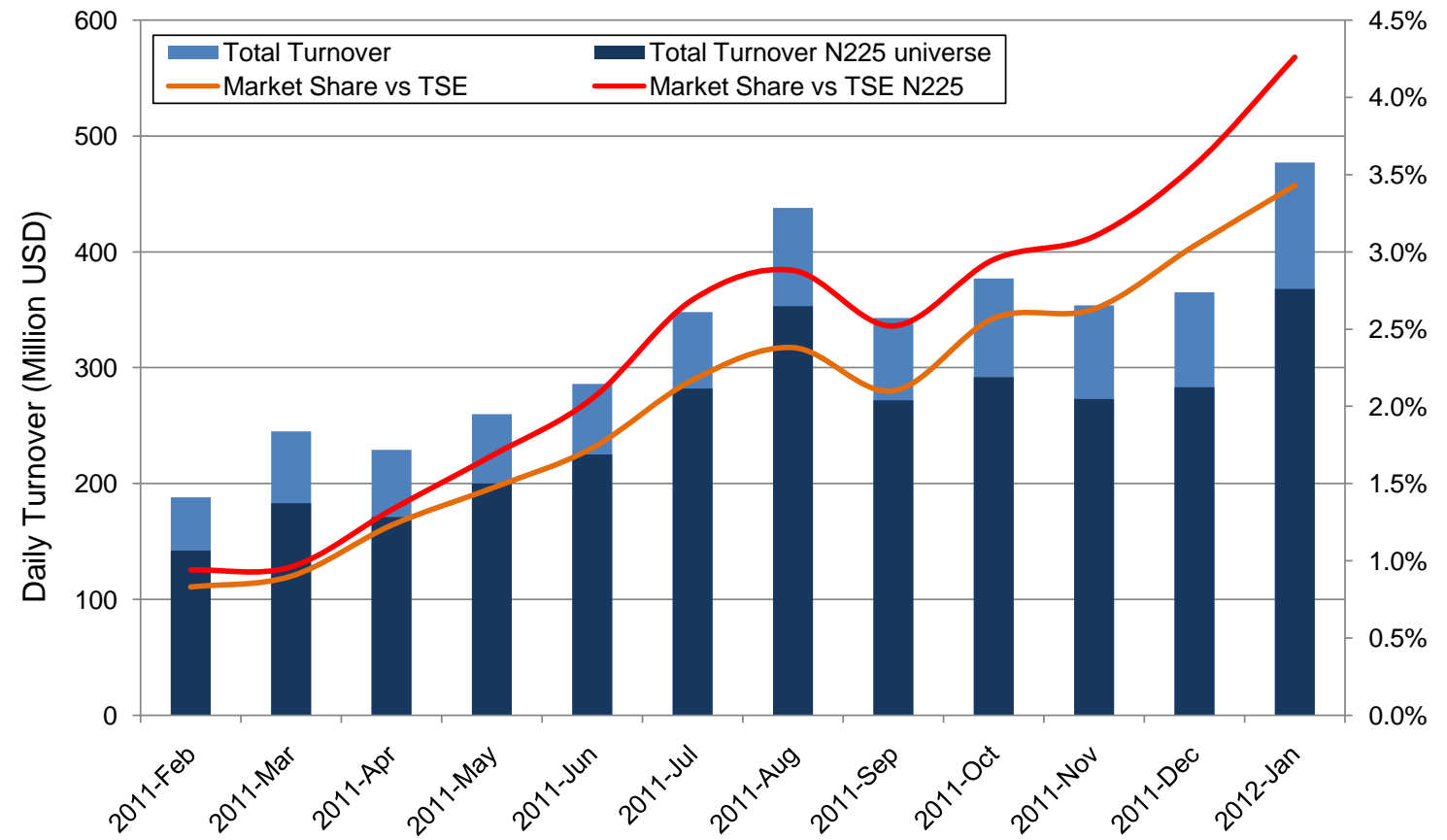
Average Daily Turnover by Month



Total Turnover by Month



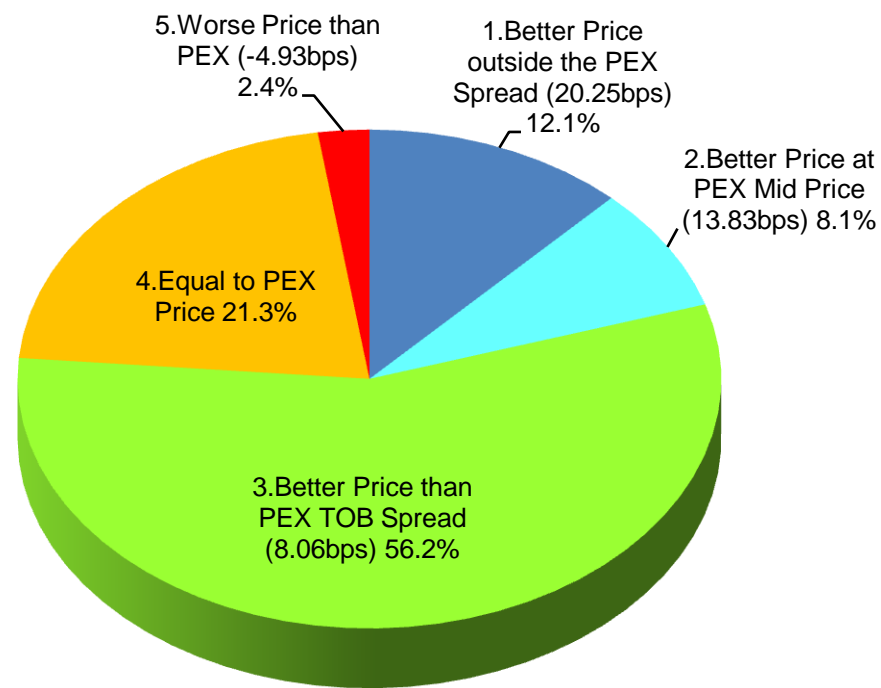
Market Share vs TSE Turnover



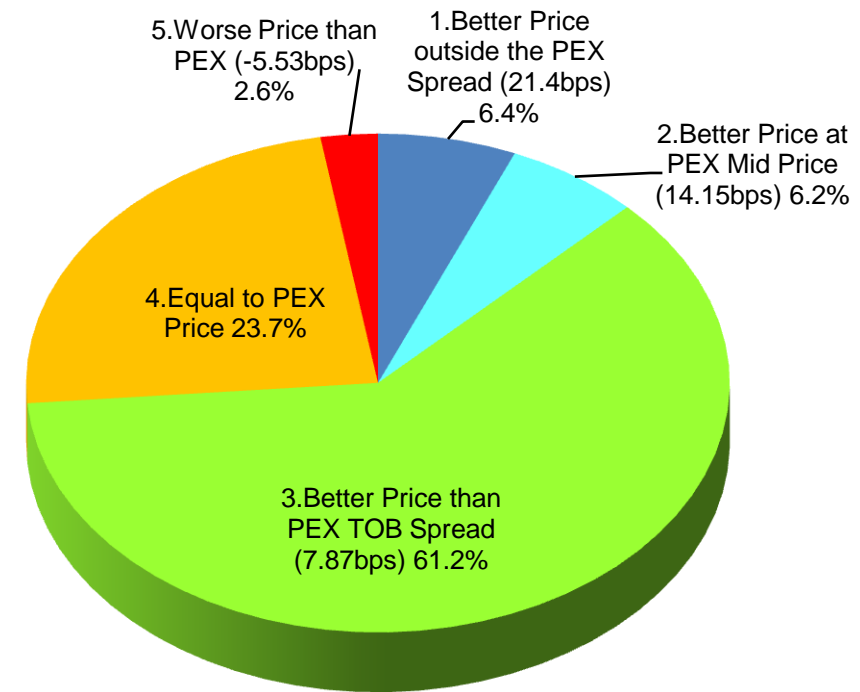
*1USD=76.94JPY

Nikkei 225 universe in January-2012

PEX : Primary Exchange



SELL Improvement

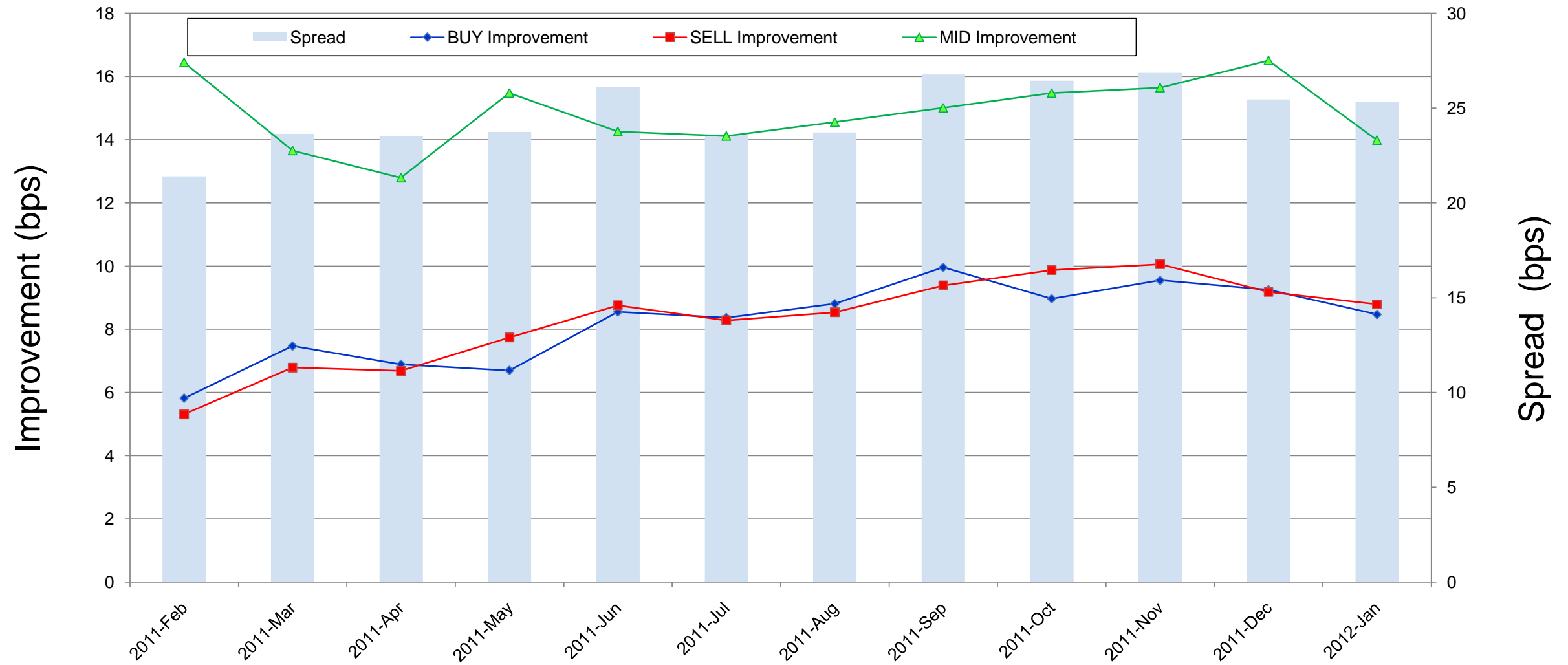


BUY Improvement

Note1: Excluded the executions from: before 9AM, lunch break, and after 3PM

Note2: Price improvement is calculated by comparing the execution price against the primary market's best bid for each sell or best offer for each buy at the point of execution and is calculated from the perspective of the Taker side of the trade

Nikkei 225 universe in January-2012



Note1: Excluded the executions from: before 9AM, lunch break, and after 3PM

Note2: Price improvement is calculated by comparing the execution price against the primary market's best bid for each sell or best offer for each buy at the point of execution and is calculated from the perspective of the Taker side of the trade

Turnover Top 50 Names in Daily Session

Ranking for January-2012

Rank	Symbol	Description	Turnover (Million USD)	Market Share (%)
1	7201	NISSAN	248.51	8.16
2	8306	MUFG	219.90	5.89
3	8411	MIZUHO	194.57	7.83
4	7751	CANON	184.66	6.80
5	4502	TAKEDAP	166.25	7.86
6	9432	NTT	142.75	7.73
7	8316	SMFG	137.35	3.40
8	7203	TOYOTA	129.99	2.70
9	6954	FANUC	127.82	3.87
10	2914	JT	122.12	5.73
11	6301	KOMATSU	99.20	2.86
12	1605	INPEX	93.33	6.19
13	4503	ASTELLAS	91.81	7.81
14	7267	HONDA	91.58	2.49
15	8604	NOMRAHD	88.76	3.88
16	6501	HITACHI	87.49	4.59
17	9433	KDDI	87.18	4.75
18	8058	MITBISI	85.60	3.48
19	6502	TOSHIBA	83.75	3.66
20	8035	TKOELCN	81.28	4.57
21	6752	PANASNIC	80.63	4.70
22	8001	ITOCHU	77.79	5.38
23	9437	DOCOMO	76.62	4.04
24	6753	SHARP	71.69	5.40
25	9984	SOFTBNK	70.34	2.15

*1USD=76.94JPY

Rank	Symbol	Description	Turnover (Million USD)	Market Share (%)
26	9020	JR EAST	70.33	5.73
27	8031	NETSC	70.13	3.18
28	4063	SINETUC	68.29	5.35
29	4523	EISAI	67.07	9.50
30	6971	KYOCERA	62.09	5.36
31	8802	MTB-EST	61.65	5.34
32	8053	SMITOMO	61.45	5.51
33	5020	JX	60.63	5.11
34	8801	MTI-FU	58.92	5.03
35	8002	MARBENI	57.14	4.47
36	6503	MELCO	56.10	2.62
37	8591	ORIX	52.91	4.08
38	6762	TDK	52.86	4.01
39	6758	SONY	52.69	2.74
40	9104	MTI-OSK	52.61	2.45
41	5401	NPSTEEL	52.49	4.79
42	8308	RESONA	51.58	5.78
43	1963	JGC	49.15	5.92
44	8830	SMIRE&D	47.76	5.49
45	6702	FUJITSU	46.74	4.37
46	6326	KUBOTA	45.76	7.55
47	3382	7&I-HD	45.03	4.02
48	7011	MHI	43.39	3.92
49	8267	AEON	43.38	4.98
50	3402	TORAY	43.05	5.30

Improvement of Monthly Turnover for Top 25 Names

Ranking for January-2012

Rank	Symbol	Name	Sell Executions							Improve Avg bps	Buy Executions							Improve Avg bps
			Worse(A)		Equal(B)		Better (C)		(B)+(C)		Worse(A)		Equal(B)		Better (C)		(B)+(C)	
1	7201	NISSAN	192	1.63%	1,760	14.91%	9,852	83.46%	98.37%	4.72	179	1.29%	2,544	18.34%	11,145	80.36%	98.37%	4.71
2	8306	MUFG	102	0.76%	1,380	10.29%	11,923	88.94%	99.24%	9.39	80	0.58%	1,230	8.87%	12,557	90.55%	99.24%	9.60
3	8411	MIZUHO	59	0.28%	506	2.39%	20,594	97.33%	99.72%	33.83	42	0.12%	3,265	8.95%	33,173	90.93%	99.72%	27.60
4	7751	CANON	39	0.60%	681	10.50%	5,763	88.89%	99.40%	5.01	70	1.05%	1,125	16.85%	5,481	82.10%	99.40%	4.64
5	4502	TAKEDAP	24	0.35%	1,010	14.87%	5,759	84.78%	99.65%	4.06	26	0.38%	820	12.06%	5,953	87.56%	99.65%	4.35
6	9432	NTT	43	0.73%	803	13.61%	5,054	85.66%	99.27%	3.68	44	0.87%	840	16.60%	4,176	82.53%	99.27%	4.40
7	8316	SMFG	394	5.56%	2,156	30.44%	4,533	64.00%	94.44%	1.53	451	5.25%	3,728	43.38%	4,414	51.37%	94.44%	2.54
8	7203	TOYOTA	483	5.69%	3,276	38.59%	4,730	55.72%	94.31%	1.21	662	9.32%	2,766	38.94%	3,676	51.75%	94.31%	1.86
9	6954	FANUC	190	5.96%	671	21.06%	2,325	72.98%	94.04%	3.32	163	5.75%	1,105	39.00%	1,565	55.24%	94.04%	3.50
10	2914	JT	64	1.41%	484	10.63%	4,007	87.97%	98.59%	4.02	85	2.42%	438	12.45%	2,994	85.13%	98.59%	3.88
11	6301	KOMATSU	348	5.35%	2,030	31.23%	4,123	63.42%	94.65%	1.67	565	7.64%	2,670	36.10%	4,161	56.26%	94.65%	2.57
12	1605	INPEX	47	1.13%	302	7.26%	3,811	91.61%	98.87%	5.07	45	1.28%	225	6.40%	3,246	92.32%	98.87%	4.96
13	4503	ASTELLAS	28	0.75%	375	10.11%	3,308	89.14%	99.25%	5.29	16	0.34%	705	15.09%	3,951	84.57%	99.25%	5.90
14	7267	HONDA	463	5.93%	2,265	28.99%	5,084	65.08%	94.07%	1.75	652	12.21%	2,174	40.72%	2,513	47.07%	94.07%	2.13
15	8604	NOMRAHD	108	1.04%	1,904	18.28%	8,402	80.68%	98.96%	12.51	190	1.01%	3,435	18.28%	15,167	80.71%	98.96%	9.97
16	6501	HITACHI	67	1.75%	277	7.26%	3,474	90.99%	98.25%	7.43	83	2.18%	362	9.51%	3,361	88.31%	98.25%	7.98
17	9433	KDDI	76	2.78%	373	13.66%	2,282	83.56%	97.22%	3.02	73	2.31%	342	10.81%	2,748	86.88%	97.22%	3.81
18	8058	MITBISI	286	4.13%	2,163	31.23%	4,478	64.65%	95.87%	1.99	259	4.09%	2,649	41.83%	3,425	54.08%	95.87%	2.56
19	6502	TOSHIBA	38	0.91%	727	17.45%	3,400	81.63%	99.09%	9.17	41	0.90%	781	17.15%	3,732	81.95%	99.09%	9.35
20	8035	TKOELCN	62	1.89%	542	16.56%	2,669	81.55%	98.11%	3.91	82	2.20%	865	23.22%	2,778	74.58%	98.11%	4.41
21	6752	PANASNIC	300	3.06%	1,687	17.18%	7,831	79.76%	96.94%	5.10	278	2.29%	2,467	20.31%	9,403	77.40%	96.94%	5.27
22	8001	ITOCHU	119	1.37%	1,940	22.40%	6,600	76.22%	98.63%	4.23	141	1.47%	1,705	17.73%	7,773	80.81%	98.63%	4.14
23	9437	DOCOMO	84	1.47%	2,121	37.22%	3,493	61.30%	98.53%	2.05	138	2.59%	2,082	39.06%	3,110	58.35%	98.53%	3.04
24	6753	SHARP	50	2.21%	395	17.43%	1,821	80.36%	97.79%	4.57	39	1.17%	585	17.62%	2,697	81.21%	97.79%	5.77
25	9984	SOFTBNK	460	5.60%	2,562	31.19%	5,193	63.21%	94.40%	1.87	763	8.67%	3,415	38.81%	4,621	52.52%	94.40%	2.62

Note1: Excluded the executions from: before 9AM, lunch break, and after 3PM

Note2: Price improvement is calculated by comparing the execution price against the primary market's best bid for each sell or best offer for each buy at the point of execution and is calculated from the perspective of the Taker side of the trade