

Japannext PTS Monthly Statistics

April 2012

Registration as a Financial Instrument Business Operator under the Financial Instruments and Exchange Act (FIEA) (including authorization to operate a Proprietary Trading System (PTS)),
Director of Kanto Local Finance Bureau (Kinsho) No.45

TEL: +81-3-4577-4040 FAX:+81-3-3261-1702

WEB Japanese: <http://www.japannext.co.jp/ja>

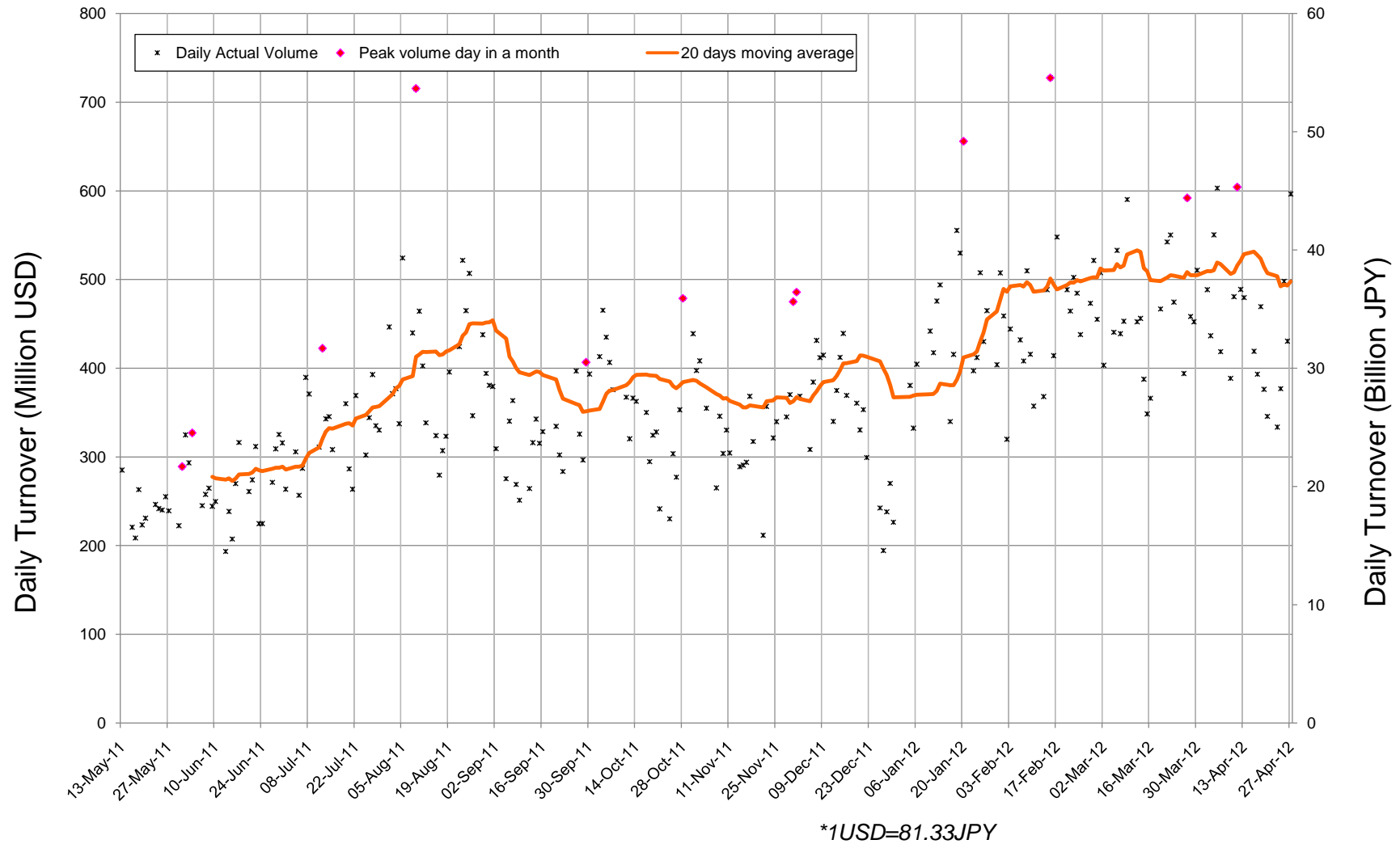
MAIL: ptsbiz@japannext.co.jp

English: <http://www.japannext.co.jp/en>

Disclaimer

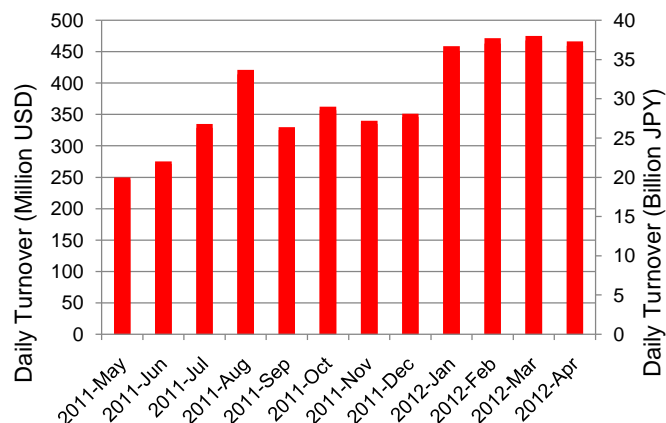
Information provided is for reference purposes only and does not constitute financial product advice nor is constituted as an offer to sell or solicitation to buy any security. The ownership and intellectual property rights of this information are solely and exclusively belong to SBI Japannext Co.,Ltd.("SBIJ") . According users are permitted to access and use the Information for their own personal, non-commercial and internal-use-only. Although SBIJ has made every effort to ensure the accuracy of the information as at the date of publication, SBIJ does not give any warranty as to the accuracy, reliability or completeness of the information. To the extent permitted by law, SBIJ and its employees, officers and contractors shall not be liable for any loss or damage arising in any way (including by way of negligence) from or in connection with any information provided or omitted or from anyone acting or refraining to act in reliance on this information.

Daily Turnover of Daytime Session

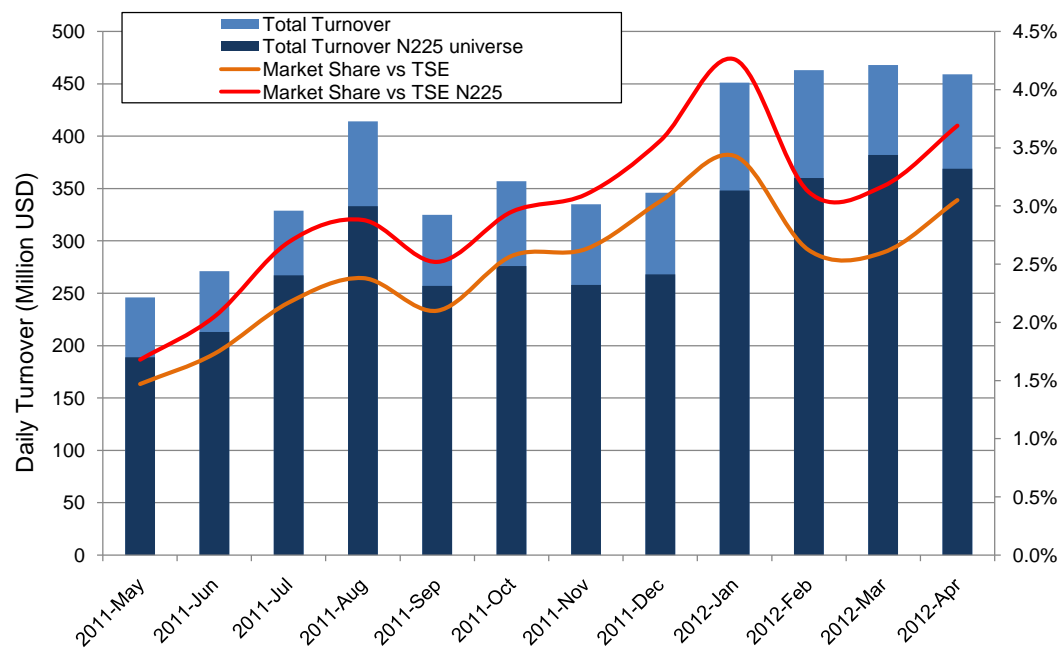


Summary of Daytime Session by Month

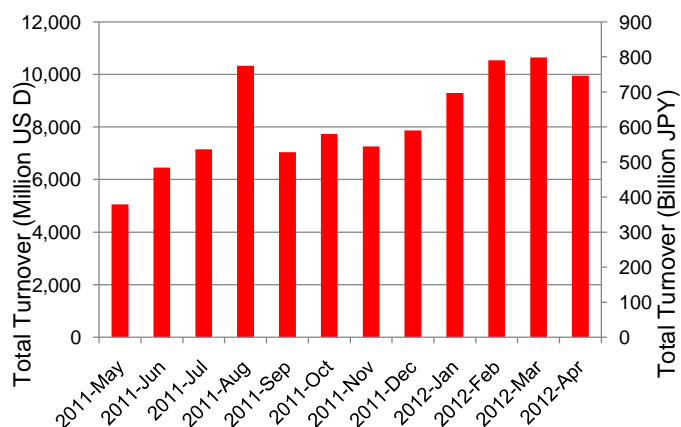
Average Daily Turnover by Month



Market Share vs TSE Turnover



Total Turnover by Month

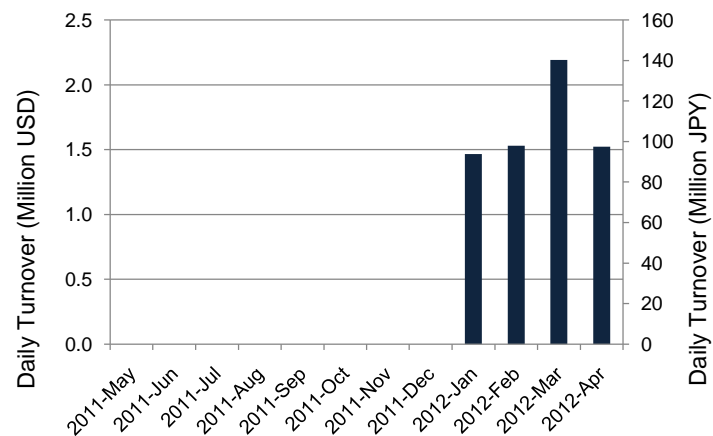


	11-Jun	11-Jul	11-Aug	11-Sep	11-Oct	11-Nov	11-Dec	12-Jan	12-Feb	12-Mar	Apr-12	
Value	246	271	329	414	325	357	335	346	451	463	468	(MM USD)
(N225)	189	213	267	333	257	276	258	268	348	360	382	(MM USD)
Share	1.47%	1.73%	2.17%	2.38%	2.10%	2.57%	2.63%	3.04%	3.43%	2.62%	2.60%	
(N225)	1.68%	2.05%	2.69%	2.88%	2.52%	2.95%	3.10%	3.56%	4.26%	3.12%	3.17%	
Improve	7.22	8.66	8.33	8.68	9.68	9.42	9.81	9.22	8.63	8.69	9.23	(N225 BPS)
Spread	23.75	26.10	23.61	23.71	26.77	26.45	26.86	25.46	25.34	25.88	26.01	(N225 BPS)

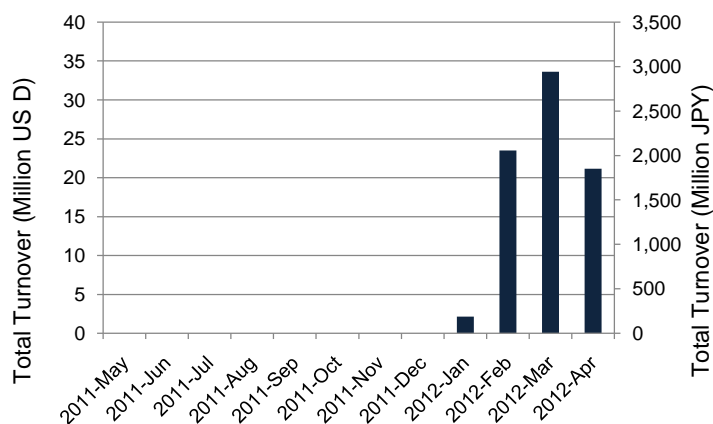
*1USD=81.33JPY

Summary of Nighttime Session by Month

Average Daily Turnover by Month



Total Turnover by Month



Turnover Top 30 Names in Nighttime Session of Month

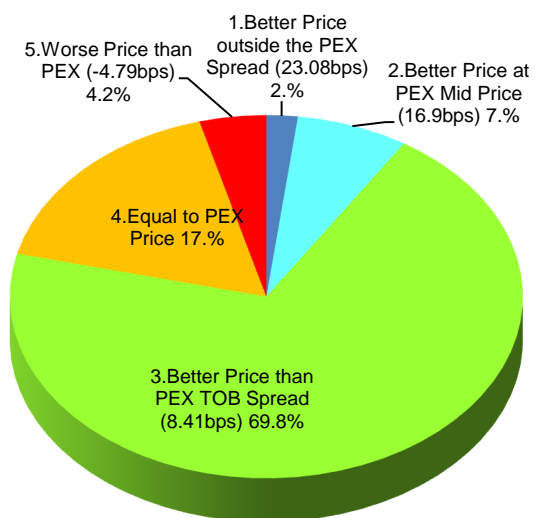
Rank	Symbol	Description	Turnover (USD)	Market Share (%)
1	8411	MIZUHO	4,772,267	0.14
2	8103	MEIWA	1,845,587	0.17
3	8306	MUFG	1,239,269	0.02
4	3662	ATEAM	996,886	0.82
5	3649	PSC	939,311	0.20
6	4406	N.J.CHM	832,817	0.35
7	2124	JACR	825,823	0.70
8	7203	TOYOTA	672,358	0.01
9	2410	CAREERDC	669,622	0.73
10	3644	1ST HD	501,377	0.69
11	7777	3DMATRIX	371,370	0.23
12	3386	COSMOBIO	366,241	0.45
13	3645	MNC	365,519	0.22
14	4571	NANOCARI	356,198	0.20
15	2706	BROCCOL	325,904	0.55
16	8058	MITBISI	304,573	0.01
17	6758	SONY	259,077	0.01
18	8316	SMFG	252,154	0.01
19	8031	MITSUI	250,248	0.01
20	2763	FT COM	245,294	2.53
21	3632	GREE	218,025	0.00
22	8604	NOMRAHD	217,783	0.01
23	6501	HITACHI	198,189	0.00
24	8508	JTRUST	195,575	0.07
25	7201	NISSAN	193,851	0.01
26	2763	FT COM	245,294	2.53
27	3632	GREE	218,025	0.00
28	8604	NOMRAHD	217,783	0.01
29	6501	HITACHI	198,189	0.00
30	8508	JTRUST	195,575	0.07

*1USD=81.33JPY

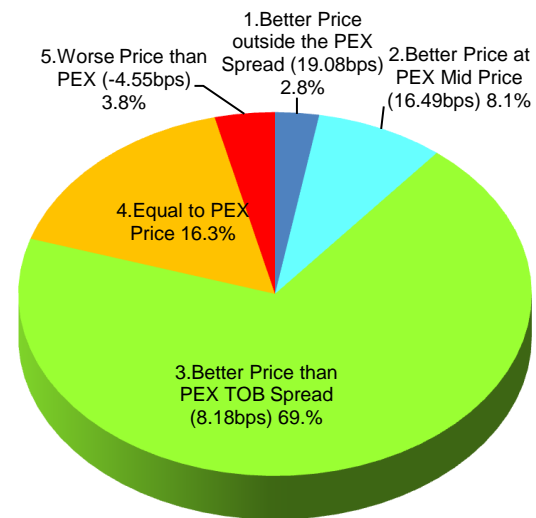
Daytime Session Execution

Nikkei 225 universe in April-2012

PEX : Primary Exchange



BUY Improvement



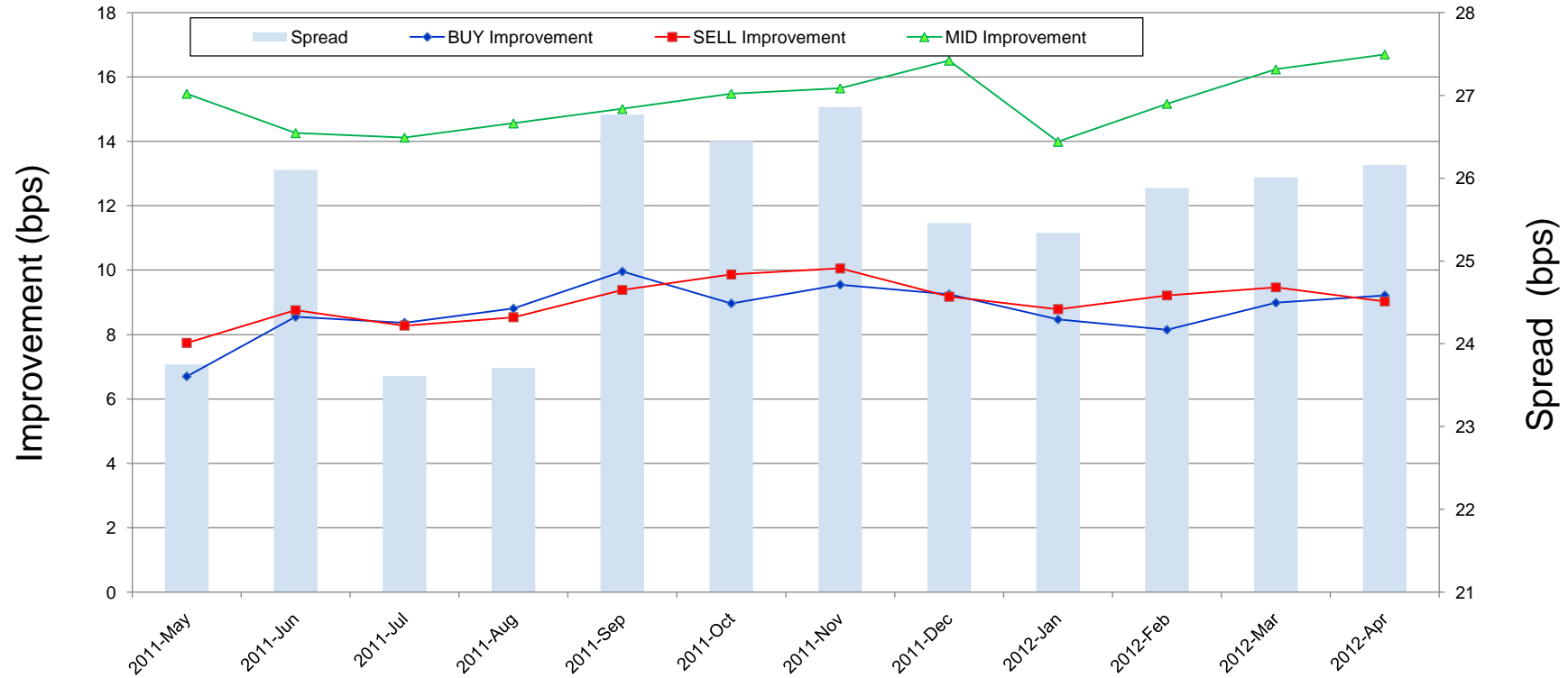
SELL Improvement

Note1: Excluded the executions from: before 9AM, lunch break, and after 3PM

Note2: Price improvement is calculated by comparing the execution price against the primary market's best bid for each sell or best offer for each buy at the point of execution and is calculated from the perspective of the Taker side of the trade

Improvement of Execution

Nikkei 225 universe in April-2012



Note1: Excluded the executions from: before 9AM, lunch break, and after 3PM

Note2: Price improvement is calculated by comparing the execution price against the primary market's best bid for each sell or best offer for each buy at the point of execution and is calculated from the perspective of the Taker side of the trade

Turnover Top 50 Names in Daytime Session

Ranking for April-2012

Rank	Symbol	Description	Turnover (Million USD)	Market Share (%)
1	7203	TOYOTA	354.50	5.72
2	8306	MUFG	275.04	4.11
3	8411	MIZUHO	267.59	7.58
4	7751	CANON	221.52	7.32
5	6501	HITACHI	207.75	3.73
6	7201	NISSAN	199.68	5.88
7	7267	HONDA	166.14	3.65
8	4502	TAKEDAP	158.66	6.91
9	2914	JT	144.77	5.83
10	9432	NTT	141.45	8.97
11	8316	SMFG	126.30	3.05
12	6954	FANUC	107.87	2.26
13	8604	NOMRAHD	107.64	3.32
14	6752	PANASONIC	103.39	5.35
15	8058	MITBISI	101.33	3.67
16	4503	ASTELLAS	97.93	7.69
17	9433	KDDI	97.08	5.26
18	8031	mitsui	95.94	3.77
19	8001	ITOCHU	94.95	4.98
20	6502	TOSHIBA	93.27	3.49
21	9983	FASTRET	91.89	2.15
22	6758	SONY	86.77	2.20
23	9020	JR EAST	83.26	6.01
24	8802	MTB-EST	78.92	4.50
25	6301	KOMATSU	68.50	2.12

*1USD=81.33JPY

Rank	Symbol	Description	Turnover (Million USD)	Market Share (%)
26	1605	INPEX	67.79	5.31
27	8002	MARBENI	67.10	3.68
28	8035	TKOELCN	66.46	4.31
29	4063	SINETUC	66.37	4.42
30	9437	DOCOMO	64.02	3.80
31	6971	KYOCERA	63.66	4.10
32	6503	MELCO	62.40	4.66
33	8309	SMTRUST	61.88	5.83
34	6988	NTTODEN	61.86	5.54
35	8801	MTI-FU	61.67	3.57
36	6753	SHARP	60.92	2.51
37	9104	MTI-OSK	59.84	3.53
38	6762	TDK	57.99	3.39
39	5401	NPSTEEL	56.86	3.59
40	8830	SMIRE&D	55.43	3.29
41	8591	ORIX	54.08	4.02
42	3382	7&i-HD	52.29	2.99
43	9831	YAMDADK	51.36	5.77
44	5201	ASA-GLS	51.36	4.93
45	4523	EISAI	50.09	6.09
46	9021	JR WEST	49.05	7.98
47	8053	SMITOMO	46.93	4.06
48	9984	SOFTBNK	46.54	1.56
49	7731	NIKON	45.99	3.34
50	7202	ISUZU	45.39	4.04

Improvement of Monthly Turnover for Top 25 Names

Ranking for April-2012

Rank	Symbol	Name	Sell Executions							Improve Avg bps	Buy Executions							Improve Avg bps
			Worse(A)		Equal(B)		Better (C)		(B)+(C)		Worse(A)		Equal(B)		Better (C)		(B)+(C)	
1	7203	TOYOTA	176	1.92%	1,309	14.30%	7,672	83.78%	98.08%	4.00	193	2.07%	1,198	12.83%	7,945	85.10%	98.08%	4.77
2	8306	MUFG	139	0.75%	1,755	9.46%	16,648	89.79%	99.25%	7.97	205	1.14%	1,703	9.46%	16,094	89.40%	99.25%	9.37
3	8411	MIZUHO	25	0.08%	1,090	3.70%	28,362	96.22%	99.92%	29.83	32	0.12%	1,553	5.61%	26,116	94.28%	99.92%	31.46
4	7751	CANON	200	2.47%	674	8.33%	7,217	89.20%	97.53%	4.07	198	2.41%	823	10.00%	7,205	87.59%	97.53%	4.05
5	6501	HITACHI	112	1.59%	740	10.51%	6,188	87.90%	98.41%	5.80	89	1.27%	897	12.83%	6,005	85.90%	98.41%	5.76
6	7201	NISSAN	366	2.47%	2,165	14.63%	12,268	82.90%	97.53%	3.10	392	2.91%	2,068	15.36%	11,006	81.73%	97.53%	3.88
7	7267	HONDA	545	10.91%	908	18.17%	3,544	70.92%	89.09%	2.35	415	10.10%	851	20.71%	2,844	69.20%	89.09%	3.72
8	4502	TAKEDAP	104	1.47%	712	10.03%	6,280	88.50%	98.53%	3.81	112	1.87%	427	7.13%	5,447	91.00%	98.53%	4.29
9	2914	JT	261	4.37%	564	9.44%	5,147	86.19%	95.63%	3.02	236	2.80%	1,131	13.40%	7,076	83.81%	95.63%	4.35
10	9432	NTT	94	1.43%	472	7.16%	6,022	91.41%	98.57%	3.83	75	1.28%	425	7.28%	5,337	91.43%	98.57%	4.01
11	8316	SMFG	776	10.10%	2,488	32.39%	4,417	57.51%	89.90%	1.01	825	12.65%	1,983	30.40%	3,716	56.96%	89.90%	1.60
12	6954	FANUC	350	12.46%	884	31.46%	1,576	56.09%	87.54%	1.76	327	14.17%	692	30.00%	1,288	55.83%	87.54%	3.29
13	8604	NOMRAHD	187	1.53%	1,259	10.32%	10,755	88.15%	98.47%	9.01	146	1.27%	1,421	12.41%	9,886	86.32%	98.47%	8.54
14	6752	PANASNIC	360	3.51%	1,428	13.93%	8,462	82.56%	96.49%	4.37	195	1.86%	1,602	15.25%	8,705	82.89%	96.49%	5.00
15	8058	MITBISI	530	8.81%	2,419	40.20%	3,068	50.99%	91.19%	1.41	611	10.87%	2,685	47.76%	2,326	41.37%	91.19%	2.45
16	4503	ASTELLAS	104	2.59%	348	8.65%	3,571	88.76%	97.41%	3.91	108	2.70%	388	9.71%	3,499	87.58%	97.41%	4.55
17	9433	KDDI	89	2.43%	334	9.13%	3,236	88.44%	97.57%	4.51	46	1.66%	224	8.07%	2,507	90.28%	97.57%	5.47
18	8031	MITSUI	326	4.56%	2,201	30.77%	4,627	64.68%	95.44%	1.92	473	7.47%	1,928	30.46%	3,929	62.07%	95.44%	2.56
19	8001	ITOCHU	197	2.58%	1,277	16.76%	6,147	80.66%	97.42%	2.94	171	2.66%	1,356	21.13%	4,890	76.20%	97.42%	3.45
20	6502	TOSHIBA	92	1.88%	585	11.95%	4,219	86.17%	98.12%	8.15	70	1.40%	498	9.95%	4,439	88.66%	98.12%	9.08
21	9983	FASTRET	287	16.30%	417	23.68%	1,057	60.02%	83.70%	1.59	328	14.04%	540	23.12%	1,468	62.84%	83.70%	2.73
22	6758	SONY	665	8.09%	2,027	24.66%	5,529	67.25%	91.91%	2.42	586	8.20%	2,221	31.08%	4,339	60.72%	91.91%	2.93
23	9020	JR EAST	112	3.27%	335	9.78%	2,979	86.95%	96.73%	6.27	170	5.47%	296	9.52%	2,643	85.01%	96.73%	5.81
24	8802	MTB-EST	220	8.20%	456	17.00%	2,007	74.80%	91.80%	2.60	300	16.08%	378	20.26%	1,188	63.67%	91.80%	3.15
25	6301	KOMATSU	674	11.19%	1,613	26.79%	3,734	62.02%	88.81%	1.36	908	19.73%	1,330	28.91%	2,363	51.36%	88.81%	1.72

Note1: Excluded the executions from: before 9AM, lunch break, and after 3PM

Note2: Price improvement is calculated by comparing the execution price against the primary market's best bid for each sell or best offer for each buy at the point of execution and is calculated from the perspective of the Taker side of the trade