

Japannext PTS Monthly Statistics

June 2012

Registration as a Financial Instrument Business Operator under the Financial Instruments and Exchange Act (FIEA) (including authorization to operate a Proprietary Trading System (PTS)),
Director of Kanto Local Finance Bureau (Kinsho) No.45

TEL: +81-3-4577-4040 FAX:+81-3-3261-1702

WEB Japanese: <http://www.japannext.co.jp/ja>

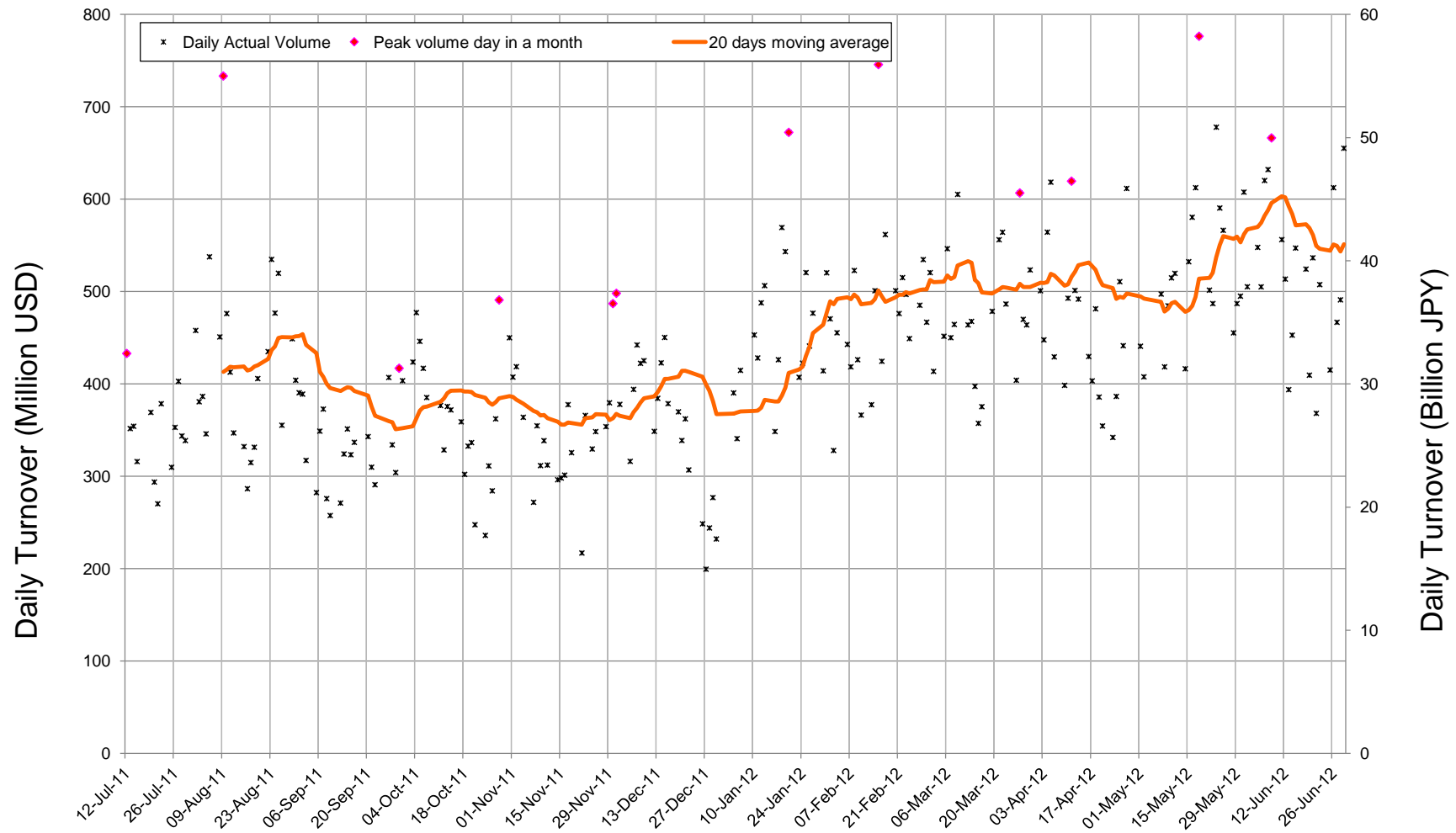
MAIL: ptsbiz@japannext.co.jp

English: <http://www.japannext.co.jp/en>

Disclaimer

Information provided is for reference purposes only and does not constitute financial product advice nor is constituted as an offer to sell or solicitation to buy any security. The ownership and intellectual property rights of this information are solely and exclusively belong to SBI Japannext Co.,Ltd.("SBIJ") . According users are permitted to access and use the Information for their own personal, non-commercial and internal-use-only. Although SBIJ has made every effort to ensure the accuracy of the information as at the date of publication, SBIJ does not give any warranty as to the accuracy, reliability or completeness of the information. To the extent permitted by law, SBIJ and its employees, officers and contractors shall not be liable for any loss or damage arising in any way (including by way of negligence) from or in connection with any information provided or omitted or from anyone acting or refraining to act in reliance on this information.

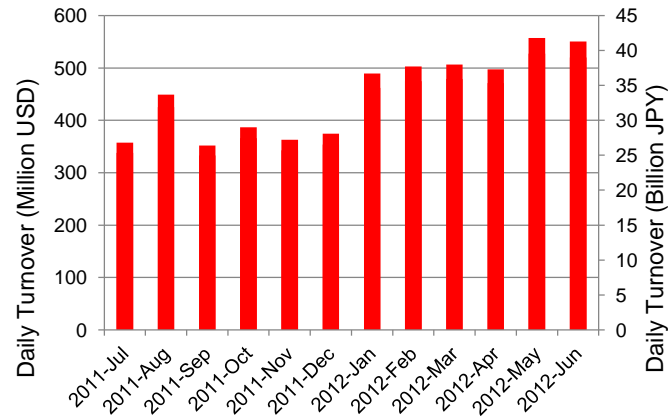
Daily Turnover of Daytime Session



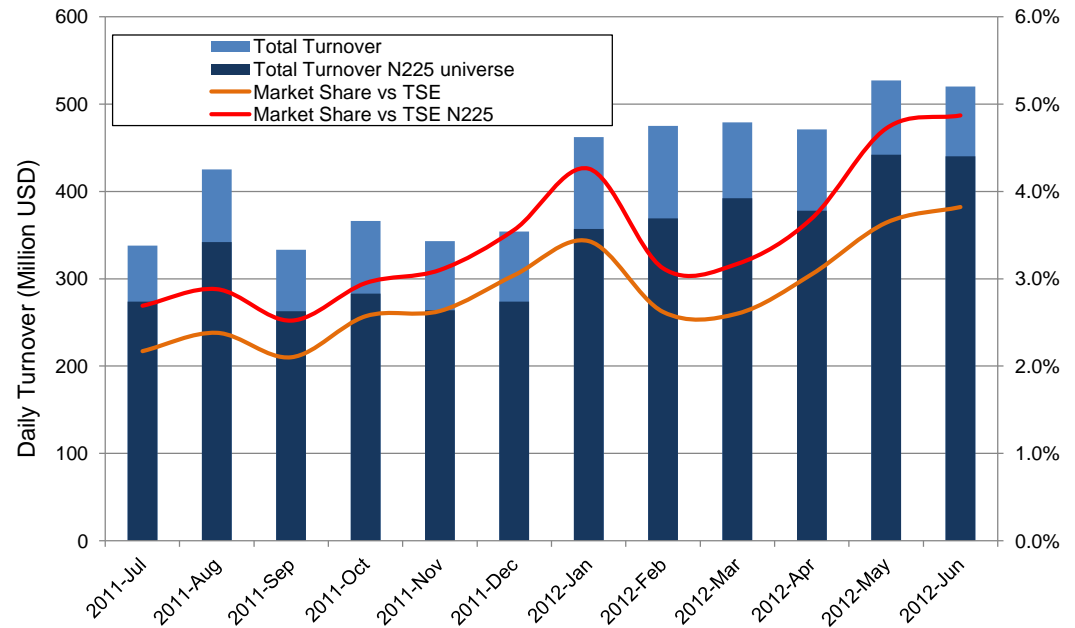
*1USD=79.34JPY

Summary of Daytime Session by Month

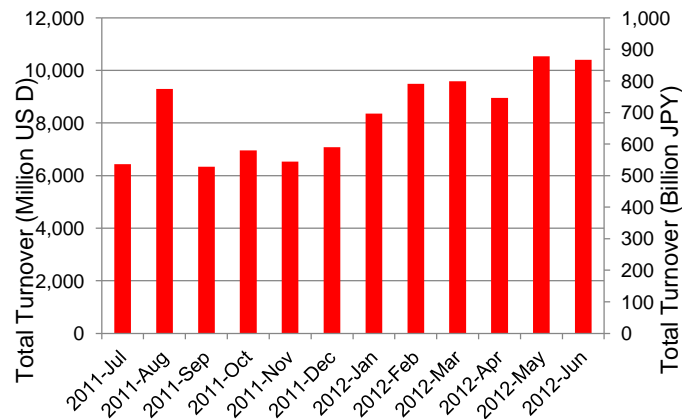
Average Daily Turnover by Month



Market Share vs TSE Turnover



Total Turnover by Month

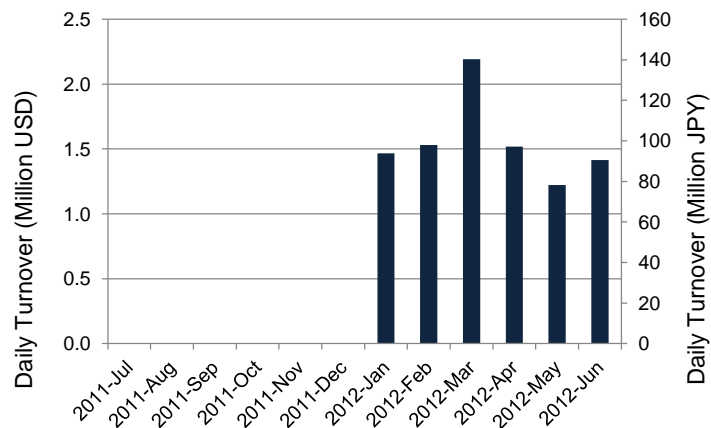


	11-Aug	11-Sep	11-Oct	11-Nov	11-Dec	12-Jan	12-Feb	12-Mar	12-Apr	12-May	12-Jun	
Value	425	333	366	343	354	462	475	479	471	527	520	(MM USD)
(N225)	342	263	283	264	274	357	369	392	378	442	440	(MM USD)
Share	2.38%	2.10%	2.57%	2.63%	3.04%	3.43%	2.62%	2.60%	3.05%	3.64%	3.82%	
(N225)	2.88%	2.52%	2.95%	3.10%	3.56%	4.26%	3.12%	3.17%	3.69%	4.72%	4.87%	
Improve	8.68	9.68	9.42	9.81	9.22	8.63	8.69	9.23	9.13	9.05	9.95	(N225 BPS)
Spread	23.71	26.77	26.45	26.86	25.46	25.34	25.88	26.01	26.16	26.26	26.82	(N225 BPS)

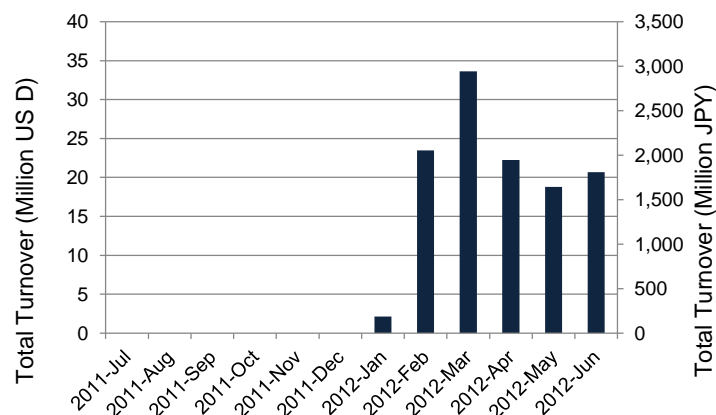
*1USD=79.34JPY

Summary of Nighttime Session by Month

Average Daily Turnover by Month



Total Turnover by Month



Turnover Top 30 Names in Nighttime Session of Month

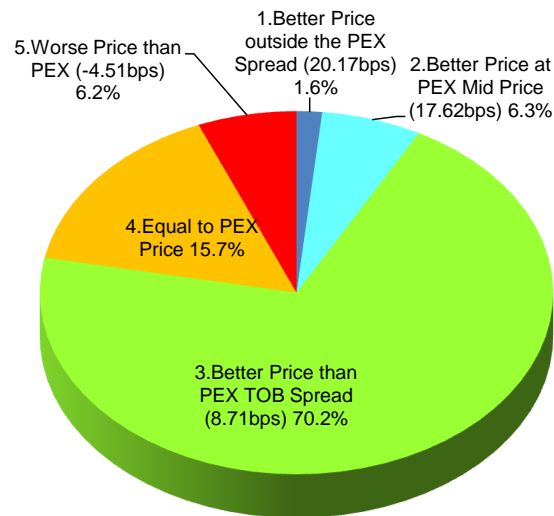
Rank	Symbol	Description	Turnover (USD)	Market Share (%)
1	8411	MIZUHO	4,050,998	0.13
2	8029	LOOK	1,509,979	0.14
3	2484	YUME NO	1,163,998	0.81
4	7203	TOYOTA	968,634	0.02
5	2766	JWD	916,132	0.41
6	3649	PSC	816,399	0.18
7	3664	MOBCAST	599,503	0.62
8	3632	GREE	589,406	0.01
9	4565	SOSEI	577,123	3.09
10	8306	MUFG	576,613	0.01
11	8058	MITBISI	544,023	0.02
12	6758	SONY	516,181	0.02
13	7777	3DMATRIX	422,955	0.21
14	6063	EAJ	404,298	0.37
15	2432	DENA	394,448	0.01
16	2369	MEDIBIC	385,610	1.37
17	3661	M-UP	376,679	0.79
18	7751	CANON	372,689	0.01
19	2303	DAWN	293,498	0.31
20	3831	PBITS	273,640	0.47
21	4406	N.J.CHM	270,904	0.14
22	6301	KOMATSU	240,762	0.01
23	8031	MITSUMI	235,260	0.01
24	3825	REMIX	231,259	3.46
25	4316	BEMAP	198,234	0.28
26	3831	PBITS	273,640	0.47
27	4406	N.J.CHM	270,904	0.14
28	6301	KOMATSU	240,762	0.01
29	8031	MITSUMI	235,260	0.01
30	3825	REMIX	231,259	3.46

*1USD=79.34JPY

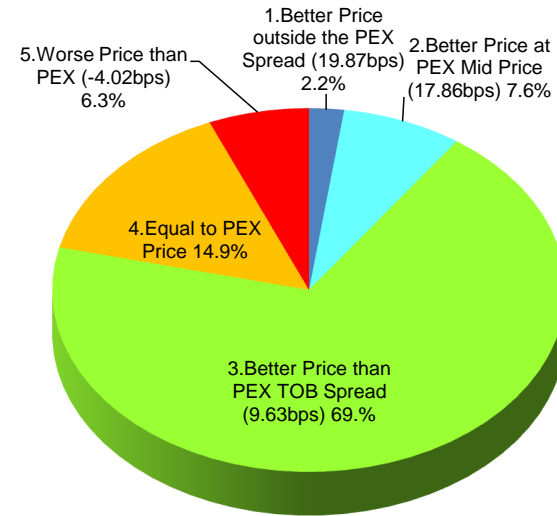
Daytime Session Execution

Nikkei 225 universe in June-2012

PEX : Primary Exchange



BUY Improvement



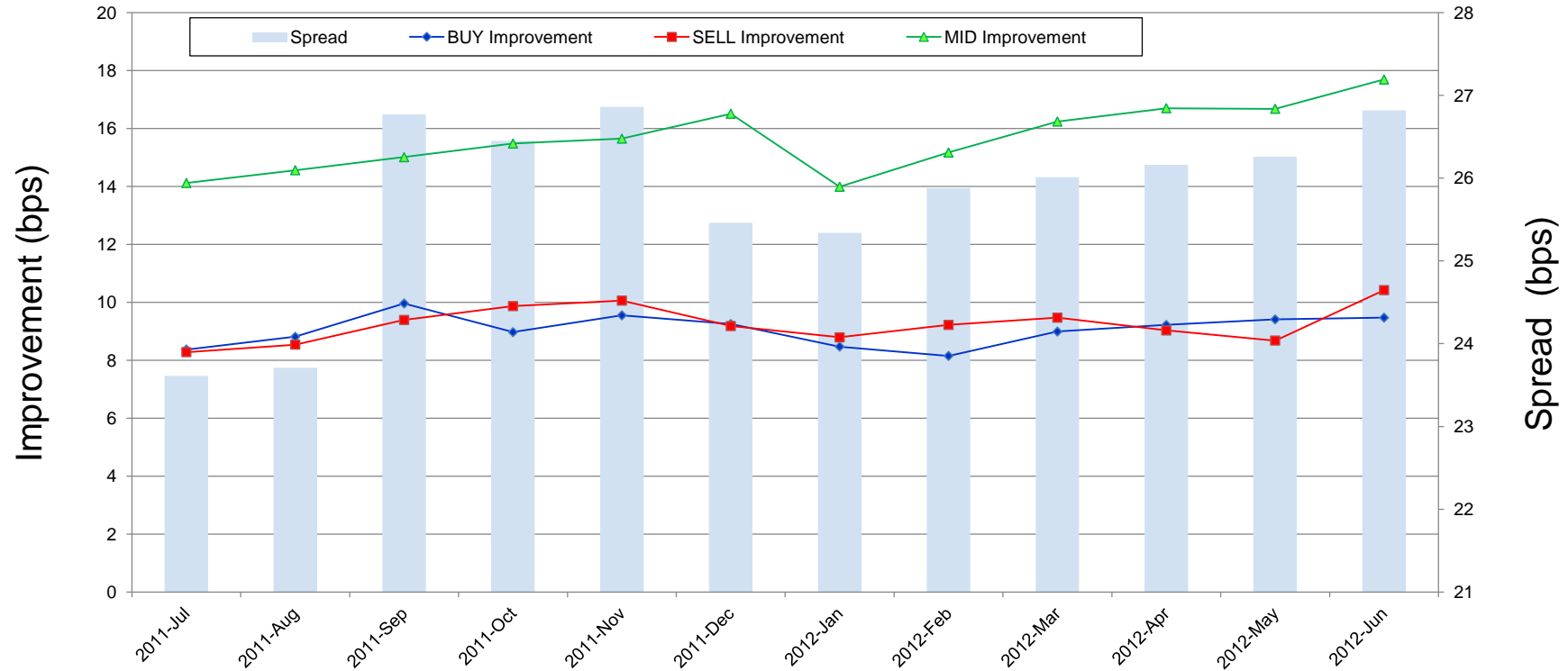
SELL Improvement

Note1: Excluded the executions from: before 9AM, lunch break, and after 3PM

Note2: Price improvement is calculated by comparing the execution price against the primary market's best bid for each sell or best offer for each buy at the point of execution and is calculated from the perspective of the Taker side of the trade

Improvement of Execution

Nikkei 225 universe in June-2012



Note1: Excluded the executions from: before 9AM, lunch break, and after 3PM

Note2: Price improvement is calculated by comparing the execution price against the primary market's best bid for each sell or best offer for each buy at the point of execution and is calculated from the perspective of the Taker side of the trade

Turnover Top 50 Names in Daytime Session

Ranking for June-2012

Rank	Symbol	Description	Turnover (Million USD)	Market Share (%)
1	7203	TOYOTA	448.96	7.46
2	8411	MIZUHO	321.56	10.24
3	8306	MUFG	320.10	6.55
4	7751	CANON	307.87	5.38
5	6954	FANUC	245.24	6.22
6	8316	SMFG	239.12	6.24
7	7267	HONDA	229.83	6.49
8	7201	NISSAN	219.19	7.09
9	8031	MITSUI	202.95	8.53
10	9432	NTT	198.85	8.07
11	2914	JT	193.47	8.63
12	8058	MITBISI	182.35	7.32
13	6752	PANASNIC	172.79	6.30
14	4502	TAKEDAP	166.63	8.97
15	6501	HITACHI	165.64	5.12
16	6301	KOMATSU	161.37	5.92
17	3382	7&I-HD	158.79	7.76
18	8001	ITOCHU	148.11	7.66
19	6758	SONY	144.79	4.80
20	8830	SMIRE&D	143.29	9.41
21	9984	SOFTBNK	143.23	3.05
22	4503	ASTELLAS	141.18	9.52
23	9433	KDDI	140.70	8.14
24	8802	MTB-EST	120.38	7.68
25	4063	SINETUC	119.57	7.28

*1USD=79.34JPY

Rank	Symbol	Description	Turnover (Million USD)	Market Share (%)
26	9020	JR EAST	119.33	9.16
27	6502	TOSHIBA	111.55	5.13
28	8801	MTI-FU	111.40	7.22
29	9437	DOCOMO	109.98	4.85
30	6971	KYOCERA	106.76	6.42
31	8604	NOMRAHD	95.77	3.38
32	8267	AEON	94.61	10.89
33	6762	TDK	93.66	4.74
34	8035	TKOELCN	92.44	6.07
35	9983	FASTRET	89.70	2.38
36	1605	INPEX	84.59	5.83
37	6503	MELCO	83.21	7.97
38	8002	MARBENI	74.89	4.43
39	4523	EISAI	74.33	5.91
40	5108	BRIDSTN	73.37	6.48
41	8591	ORIX	68.46	5.53
42	8113	UNICHAM	67.03	7.80
43	5020	JX	64.99	4.76
44	5201	ASA-GLS	59.51	6.68
45	7752	RICOH	58.04	3.86
46	5401	NPSTEEL	56.53	4.33
47	2651	LAWSON	54.67	6.97
48	7261	MAZDA	54.52	6.54
49	6753	SHARP	51.66	1.88
50	7011	MHI	50.86	3.57

Improvement of Monthly Turnover for Top 25 Names

Ranking for June-2012

Rank	Symbol	Name	Sell Executions							Improve Avg bps	Buy Executions							Improve Avg bps
			Worse(A)		Equal(B)		Better (C)		(B)+(C)		Worse(A)		Equal(B)		Better (C)		(B)+(C)	
1	7203	TOYOTA	298	3.12%	799	8.37%	8,447	88.51%	96.88%	4.21	345	3.81%	896	9.89%	7,821	86.31%	96.88%	4.23
2	8411	MIZUHO	183	0.52%	551	1.58%	34,238	97.90%	99.48%	38.83	125	0.36%	775	2.21%	34,199	97.44%	99.48%	31.96
3	8306	MUFG	265	1.36%	1,544	7.95%	17,605	90.68%	98.64%	8.65	135	0.77%	1,569	8.94%	15,853	90.29%	98.64%	10.20
4	7751	CANON	296	2.76%	772	7.19%	9,676	90.06%	97.24%	4.60	337	3.52%	833	8.70%	8,407	87.78%	97.24%	5.15
5	6954	FANUC	930	16.43%	1,548	27.34%	3,183	56.23%	83.57%	1.77	883	17.36%	1,486	29.21%	2,718	53.43%	83.57%	2.99
6	8316	SMFG	1,875	18.99%	2,548	25.81%	5,450	55.20%	81.01%	1.00	1,542	15.90%	2,817	29.05%	5,337	55.04%	81.01%	1.74
7	7267	HONDA	2,839	23.54%	3,098	25.69%	6,122	50.77%	76.46%	1.03	2,475	20.08%	3,540	28.73%	6,308	51.19%	76.46%	1.94
8	7201	NISSAN	571	3.81%	2,193	14.61%	12,242	81.58%	96.19%	3.12	473	3.27%	1,755	12.15%	12,220	84.58%	96.19%	4.16
9	8031	mitsui	1,210	10.47%	2,613	22.60%	7,738	66.93%	89.53%	1.96	927	9.23%	2,583	25.72%	6,533	65.05%	89.53%	2.63
10	9432	NTT	145	1.97%	641	8.71%	6,573	89.32%	98.03%	3.89	189	2.69%	701	9.96%	6,145	87.35%	98.03%	4.42
11	2914	JT	322	5.12%	562	8.93%	5,407	85.95%	94.88%	2.82	409	6.08%	700	10.40%	5,621	83.52%	94.88%	3.07
12	8058	MITBISI	1,525	18.35%	2,328	28.02%	4,456	53.63%	81.65%	1.44	1,090	11.82%	2,985	32.38%	5,145	55.80%	81.65%	2.68
13	6752	PANASNIC	475	3.25%	1,837	12.57%	12,303	84.18%	96.75%	4.77	528	3.27%	2,573	15.93%	13,053	80.80%	96.75%	5.09
14	4502	TAKEDAP	139	2.96%	448	9.53%	4,114	87.51%	97.04%	4.29	123	2.48%	566	11.41%	4,273	86.11%	97.04%	4.19
15	6501	HITACHI	186	2.96%	609	9.71%	5,479	87.33%	97.04%	5.90	139	2.26%	645	10.49%	5,364	87.25%	97.04%	5.91
16	6301	KOMATSU	1,603	16.38%	2,554	26.10%	5,627	57.51%	83.62%	1.39	1,812	19.09%	2,435	25.65%	5,246	55.26%	83.62%	2.32
17	3382	7&I-HD	2,176	24.61%	2,156	24.38%	4,511	51.01%	75.39%	1.04	1,649	17.92%	2,760	29.99%	4,795	52.10%	75.39%	1.88
18	8001	ITOCHU	1,048	7.84%	1,389	10.39%	10,928	81.77%	92.16%	3.70	378	2.82%	1,546	11.52%	11,496	85.66%	92.16%	3.54
19	6758	SONY	724	7.37%	1,410	14.36%	7,685	78.27%	92.63%	2.76	774	7.21%	1,347	12.56%	8,607	80.23%	92.63%	3.09
20	8830	SMIRE&D	1,081	33.17%	336	10.31%	1,842	56.52%	66.83%	1.45	986	29.13%	349	10.31%	2,050	60.56%	66.83%	2.42
21	9984	SOFTBNK	1,455	14.65%	2,907	29.26%	5,572	56.09%	85.35%	1.08	1,928	21.68%	2,206	24.80%	4,760	53.52%	85.35%	1.67
22	4503	ASTELLAS	195	3.95%	448	9.08%	4,290	86.97%	96.05%	4.57	248	5.06%	494	10.09%	4,155	84.85%	96.05%	4.44
23	9433	KDDI	165	4.09%	433	10.73%	3,438	85.18%	95.91%	3.46	188	3.89%	563	11.66%	4,077	84.44%	95.91%	3.99
24	8802	MTB-EST	664	17.94%	518	13.99%	2,520	68.07%	82.06%	1.95	774	21.46%	522	14.48%	2,310	64.06%	82.06%	2.57
25	4063	SINETUC	395	8.92%	561	12.67%	3,471	78.41%	91.08%	3.16	484	9.59%	688	13.64%	3,873	76.77%	91.08%	3.32

Note1: Excluded the executions from: before 9AM, lunch break, and after 3PM

Note2: Price improvement is calculated by comparing the execution price against the primary market's best bid for each sell or best offer for each buy at the point of execution and is calculated from the perspective of the Taker side of the trade