

Japannext PTS Monthly Statistics

July 2012

Registration as a Financial Instrument Business Operator under the Financial Instruments and Exchange Act (FIEA) (including authorization to operate a Proprietary Trading System (PTS)),
Director of Kanto Local Finance Bureau (Kinsho) No.45

TEL: +81-3-4577-4040 FAX:+81-3-3261-1702

WEB Japanese: <http://www.japannext.co.jp/ja>

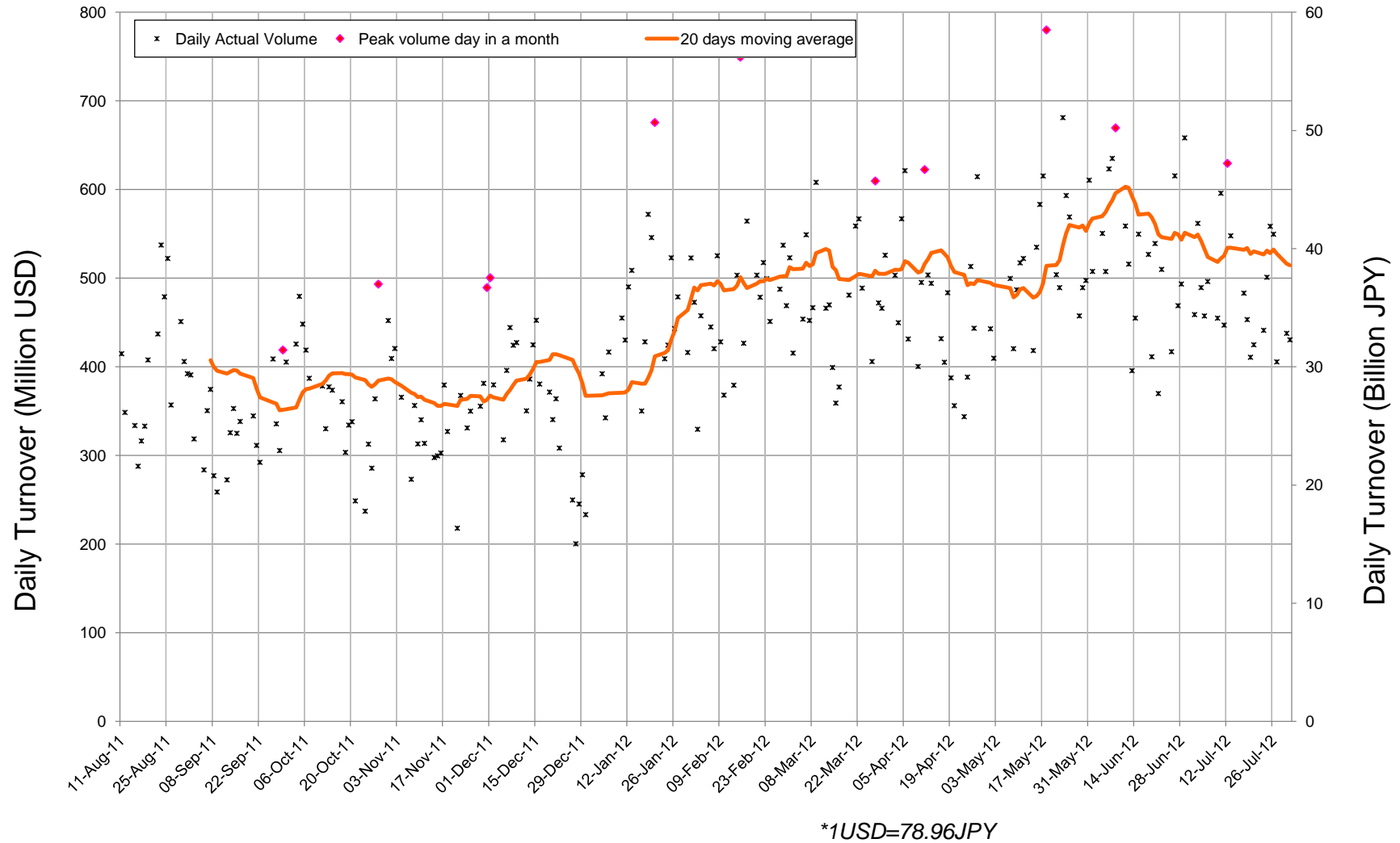
MAIL: ptsbiz@japannext.co.jp

English: <http://www.japannext.co.jp/en>

Disclaimer

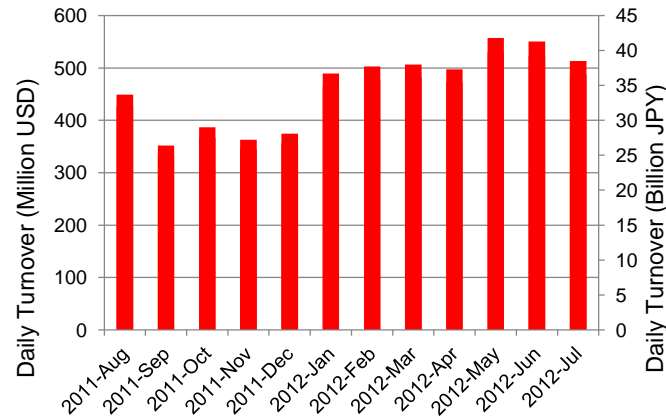
Information provided is for reference purposes only and does not constitute financial product advice nor is constituted as an offer to sell or solicitation to buy any security. The ownership and intellectual property rights of this information are solely and exclusively belong to SBI Japannext Co.,Ltd.("SBIJ") . According users are permitted to access and use the Information for their own personal, non-commercial and internal-use-only. Although SBIJ has made every effort to ensure the accuracy of the information as at the date of publication, SBIJ does not give any warranty as to the accuracy, reliability or completeness of the information. To the extent permitted by law, SBIJ and its employees, officers and contractors shall not be liable for any loss or damage arising in any way (including by way of negligence) from or in connection with any information provided or omitted or from anyone acting or refraining to act in reliance on this information.

Daily Turnover of Daytime Session

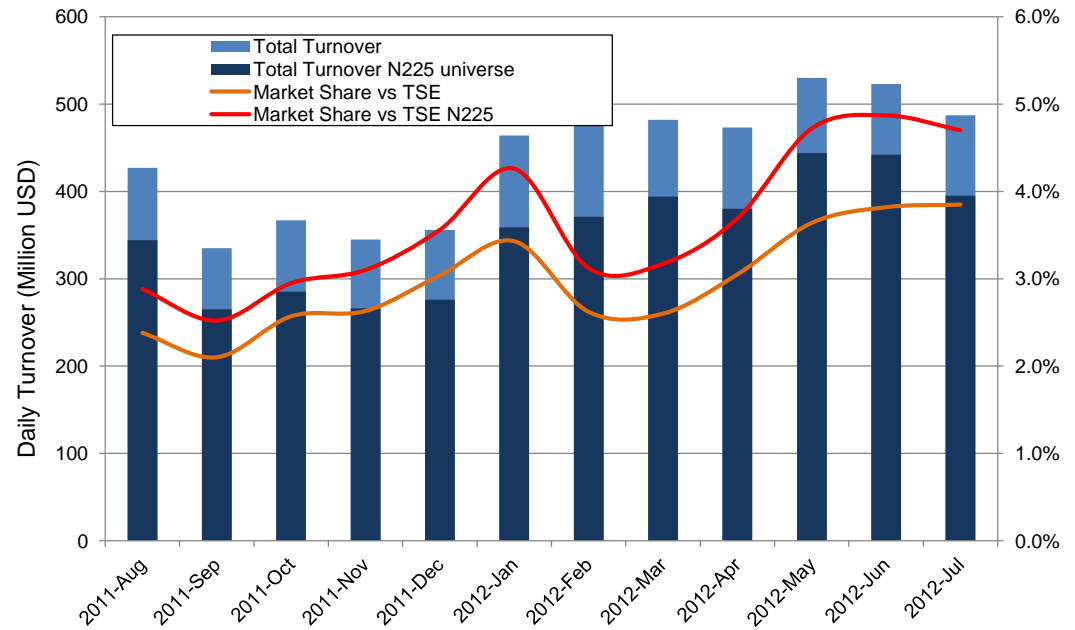


Summary of Daytime Session by Month

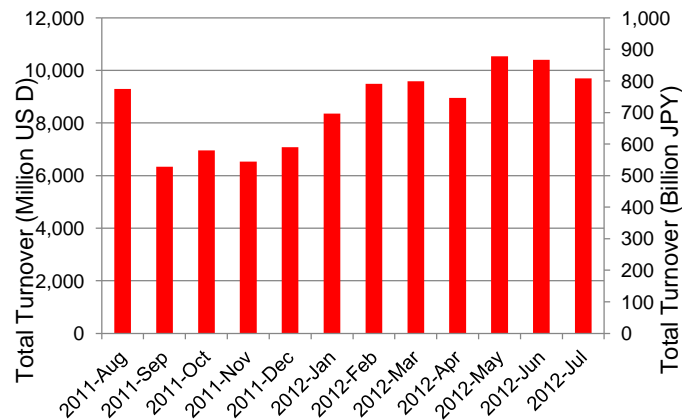
Average Daily Turnover by Month



Market Share vs TSE Turnover



Total Turnover by Month

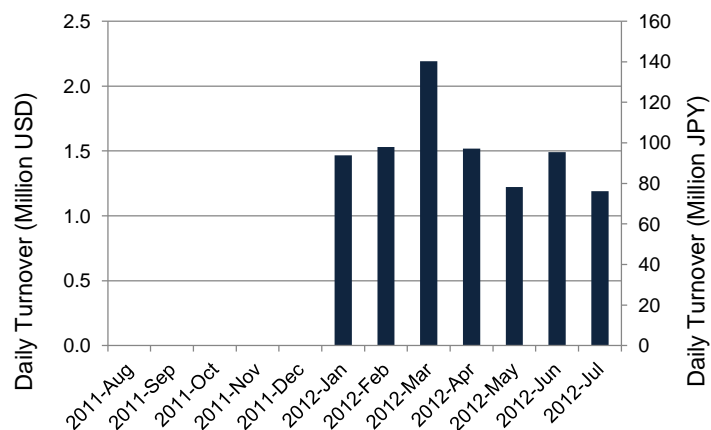


	11-Sep	11-Oct	11-Nov	11-Dec	12-Jan	12-Feb	12-Mar	12-Apr	12-May	12-Jun	12-Jul	
Value	335	367	345	356	464	477	482	473	530	523	487	(MM USD)
(N225)	265	285	266	276	359	371	394	380	444	442	395	(MM USD)
Share	2.10%	2.57%	2.63%	3.04%	3.43%	2.62%	2.60%	3.05%	3.64%	3.82%	3.85%	
(N225)	2.52%	2.95%	3.10%	3.56%	4.26%	3.12%	3.17%	3.69%	4.72%	4.87%	4.70%	
Improve	9.68	9.42	9.81	9.22	8.63	8.69	9.23	9.13	9.05	9.95	10.21	(N225 BPS)
Spread	26.77	26.45	26.86	25.46	25.34	25.88	26.01	26.16	26.26	26.82	27.69	(N225 BPS)

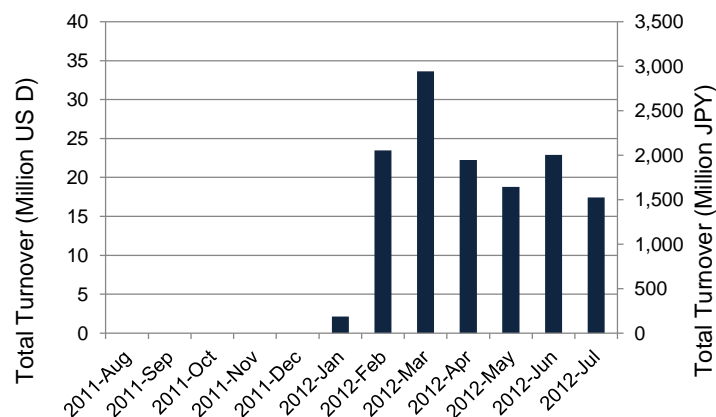
*1USD=78.96JPY

Summary of Nighttime Session by Month

Average Daily Turnover by Month



Total Turnover by Month



Turnover Top 30 Names in Nighttime Session of Month

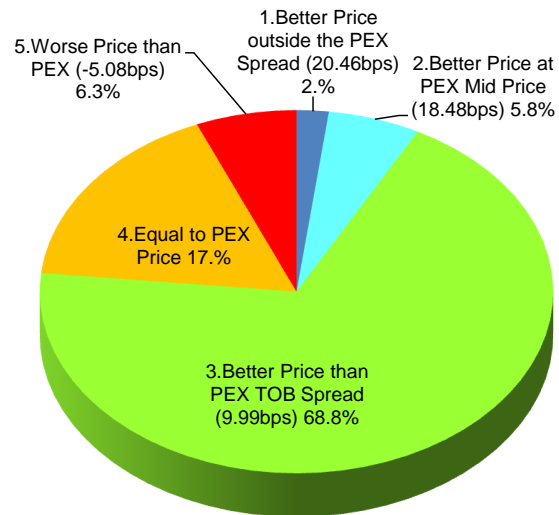
Rank	Symbol	Description	Turnover (USD)	Market Share (%)
1	8411	MIZUHO	4,613,547	0.16
2	9202	ANA	1,272,856	0.07
3	7751	CANON	1,256,123	0.02
4	8251	PARCO	860,543	0.49
5	3649	PSC	799,545	0.33
6	8306	MUFG	726,803	0.01
7	6758	SONY	589,622	0.02
8	4563	ANGESMG	565,617	0.51
9	9419	WIRELESG	565,582	0.17
10	8058	MITBISI	562,190	0.03
11	1978	DK ATAKA	437,476	0.10
12	6063	EAJ	428,864	0.12
13	4571	NANOCARI	413,252	0.25
14	4751	CYBER A	323,081	0.03
15	8031	mitsui	297,751	0.02
16	7267	HONDA	280,034	0.01
17	2484	YUME NO	278,288	0.21
18	7203	TOYOTA	276,817	0.01
19	7201	NISSAN	236,793	0.01
20	6753	SHARP	219,438	0.01
21	3656	KLAB	219,167	0.25
22	6062	CHAMCARE	215,999	0.32
23	2341	ARBEIT	210,155	0.30
24	8734	ASTMAX	192,022	0.34
25	6301	KOMATSU	184,520	0.01
26	6753	SHARP	219,438	0.01
27	3656	KLAB	219,167	0.25
28	6062	CHAMCARE	215,999	0.32
29	2341	ARBEIT	210,155	0.30
30	8734	ASTMAX	192,022	0.34

*1USD=78.96JPY

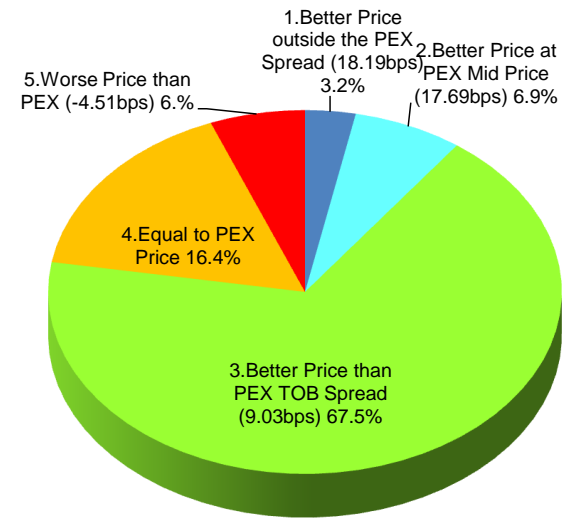
Daytime Session Execution

Nikkei 225 universe in July-2012

PEX : Primary Exchange



BUY Improvement



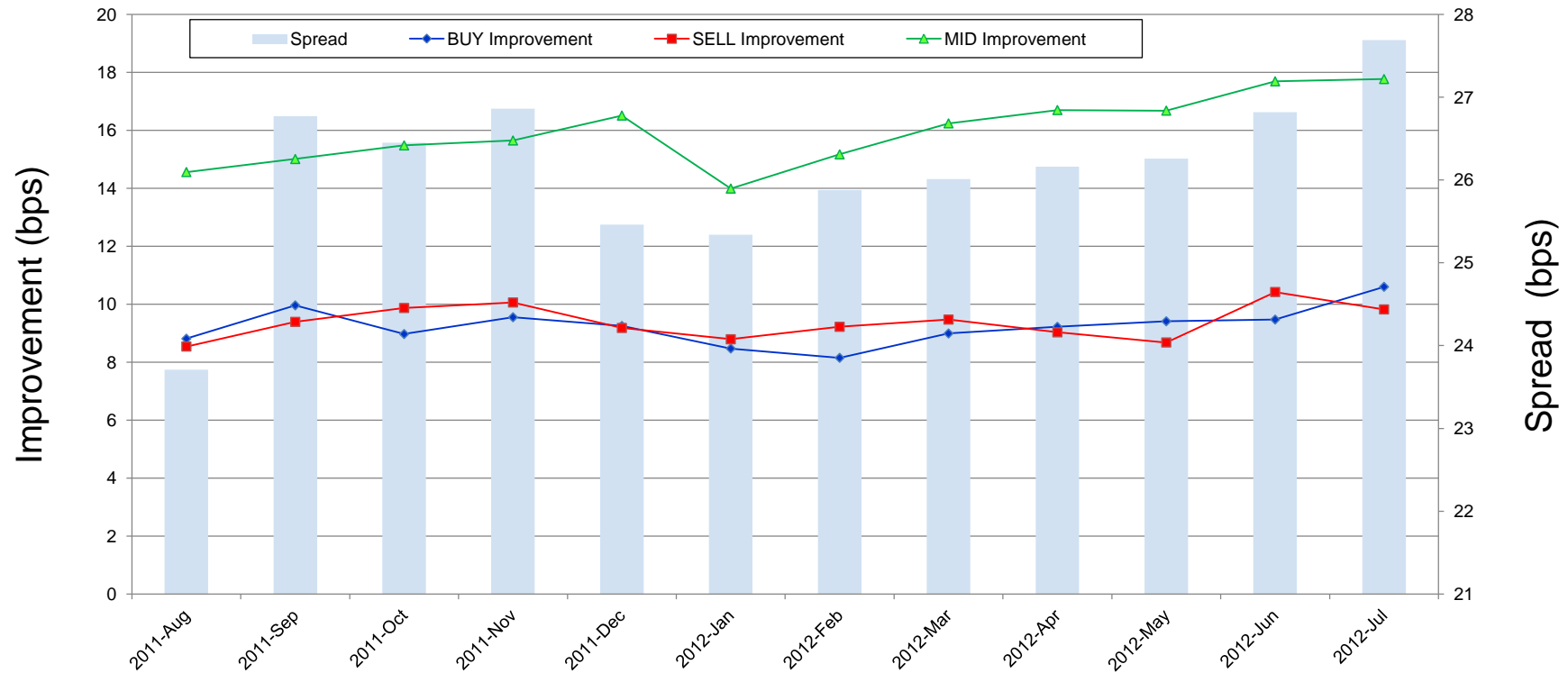
SELL Improvement

Note1: Excluded the executions from: before 9AM, lunch break, and after 3PM

Note2: Price improvement is calculated by comparing the execution price against the primary market's best bid for each sell or best offer for each buy at the point of execution and is calculated from the perspective of the Taker side of the trade

Improvement of Execution

Nikkei 225 universe in July-2012



Note1: Excluded the executions from: before 9AM, lunch break, and after 3PM

Note2: Price improvement is calculated by comparing the execution price against the primary market's best bid for each sell or best offer for each buy at the point of execution and is calculated from the perspective of the Taker side of the trade

Turnover Top 50 Names in Daytime Session

Ranking for July-2012

Rank	Symbol	Description	Turnover (Million USD)	Market Share (%)
1	8306	MUFG	317.35	5.72
2	7203	TOYOTA	301.55	6.83
3	8411	MIZUHO	266.24	9.30
4	9432	NTT	207.34	10.98
5	7201	NISSAN	182.05	6.19
6	7751	CANON	178.78	3.40
7	6954	FANUC	172.10	5.02
8	4503	ASTELLAS	156.89	6.20
9	7267	HONDA	149.46	5.45
10	8031	MITSUI	148.59	7.52
11	8316	SMFG	147.42	3.75
12	4502	TAKEDAP	143.98	8.64
13	6752	PANASNIC	143.96	4.55
14	9984	SOFTBNK	143.15	2.55
15	8830	SMIRE&D	136.61	10.01
16	8058	MITBISI	125.90	5.70
17	6301	KOMATSU	118.23	3.69
18	2914	JT	118.21	5.95
19	6501	HITACHI	114.43	4.44
20	9433	KDDI	114.26	5.87
21	8801	MTI-FU	108.43	6.88
22	9020	JR EAST	108.32	7.94
23	6502	TOSHIBA	100.05	4.43
24	8802	MTB-EST	97.79	6.45
25	8001	ITOCHU	94.88	7.64

*1USD=78.96JPY

Rank	Symbol	Description	Turnover (Million USD)	Market Share (%)
26	4063	SINETUC	93.70	6.47
27	9437	DOCOMO	89.05	5.90
28	4523	EISAI	88.87	9.01
29	9983	FASTRET	78.63	3.29
30	6758	SONY	75.58	2.75
31	8002	MARBENI	75.07	5.13
32	8053	SMITOMO	74.53	7.22
33	6971	KYOCERA	73.32	6.00
34	7752	RICOH	72.69	4.71
35	8035	TKOELCN	71.84	4.67
36	5401	NPSTEEL	67.79	5.45
37	8591	ORIX	66.30	5.78
38	8604	NOMRAHD	64.13	3.21
39	1963	JGC	61.60	10.03
40	2432	DENA	61.09	2.11
41	8113	UNICHAM	60.46	8.43
42	5020	JX	60.08	5.46
43	5108	BRIDSTN	58.34	5.32
44	3382	7&I-HD	58.08	3.08
45	7011	MHI	57.16	5.41
46	8309	SMTRUST	57.02	5.49
47	6762	TDK	56.81	2.67
48	8267	AEON	56.28	8.05
49	9531	TKO-GAS	55.87	6.04
50	2802	AJINMTO	54.17	7.29

Improvement of Monthly Turnover for Top 25 Names

Ranking for July-2012

Rank	Symbol	Name	Sell Executions							Improve Avg bps	Buy Executions							Improve Avg bps
			Worse(A)		Equal(B)		Better (C)		(B)+(C)		Worse(A)		Equal(B)		Better (C)		(B)+(C)	
1	8306	MUFG	239	1.28%	1,739	9.32%	16,682	89.40%	98.72%	8.31	239	1.41%	1,864	10.99%	14,859	87.60%	98.72%	8.92
2	7203	TOYOTA	491	5.31%	1,084	11.72%	7,673	82.97%	94.69%	3.63	537	7.67%	1,132	16.18%	5,329	76.15%	94.69%	3.91
3	8411	MIZUHO	111	0.40%	625	2.27%	26,782	97.33%	99.60%	30.49	171	0.61%	485	1.72%	27,526	97.67%	99.60%	35.62
4	9432	NTT	290	3.41%	959	11.27%	7,259	85.32%	96.59%	3.91	219	2.95%	1,192	16.05%	6,018	81.01%	96.59%	4.02
5	7201	NISSAN	367	2.14%	2,008	11.72%	14,754	86.13%	97.86%	3.98	364	2.17%	2,058	12.29%	14,328	85.54%	97.86%	4.15
6	7751	CANON	695	7.60%	1,154	12.62%	7,294	79.78%	92.40%	3.64	639	8.06%	929	11.71%	6,364	80.23%	92.40%	3.23
7	6954	FANUC	571	14.42%	1,007	25.44%	2,381	60.14%	85.58%	1.98	556	12.61%	1,341	30.42%	2,511	56.96%	85.58%	2.99
8	4503	ASTELLAS	406	5.87%	813	11.76%	5,695	82.37%	94.13%	4.27	542	8.81%	979	15.92%	4,630	75.27%	94.13%	4.14
9	7267	HONDA	2,187	22.67%	2,390	24.77%	5,072	52.57%	77.33%	1.17	1,987	19.51%	2,276	22.34%	5,923	58.15%	77.33%	2.37
10	8031	mitsui	849	7.21%	2,891	24.56%	8,033	68.23%	92.79%	2.21	873	8.79%	2,409	24.25%	6,650	66.96%	92.79%	2.73
11	8316	SMFG	1,130	14.19%	1,978	24.84%	4,856	60.97%	85.81%	1.26	1,258	18.80%	1,794	26.80%	3,641	54.40%	85.81%	1.56
12	4502	TAKEDAP	60	0.88%	884	12.90%	5,908	86.22%	99.12%	3.77	112	1.88%	698	11.71%	5,153	86.42%	99.12%	3.71
13	6752	PANASNIC	557	2.92%	2,867	15.02%	15,660	82.06%	97.08%	4.98	619	3.60%	2,915	16.93%	13,684	79.47%	97.08%	5.53
14	9984	SOFTBNK	1,198	14.83%	1,740	21.54%	5,140	63.63%	85.17%	1.85	1,296	13.22%	2,674	27.29%	5,830	59.49%	85.17%	2.70
15	8830	SMIRE&D	966	31.60%	523	17.11%	1,568	51.29%	68.40%	1.40	926	34.84%	458	17.23%	1,274	47.93%	68.40%	2.49
16	8058	MITBISI	813	9.69%	2,346	27.96%	5,233	62.36%	90.31%	1.65	992	14.04%	2,046	28.95%	4,029	57.01%	90.31%	2.05
17	6301	KOMATSU	1,233	15.66%	1,969	25.01%	4,671	59.33%	84.34%	1.53	1,385	16.01%	2,428	28.06%	4,840	55.93%	84.34%	2.32
18	2914	JT	636	7.61%	2,091	25.04%	5,625	67.35%	92.39%	1.26	925	10.15%	2,448	26.87%	5,738	62.98%	92.39%	1.60
19	6501	HITACHI	110	2.13%	749	14.51%	4,304	83.36%	97.87%	5.09	123	2.58%	643	13.51%	3,994	83.91%	97.87%	7.15
20	9433	KDDI	90	2.54%	323	9.13%	3,124	88.32%	97.46%	5.48	92	2.14%	604	14.07%	3,598	83.79%	97.46%	4.88
21	8801	MTI-FU	756	24.67%	483	15.76%	1,825	59.56%	75.33%	1.65	580	21.51%	448	16.62%	1,668	61.87%	75.33%	2.91
22	9020	JR EAST	166	3.89%	460	10.78%	3,643	85.34%	96.11%	4.57	196	5.04%	533	13.69%	3,163	81.27%	96.11%	5.03
23	6502	TOSHIBA	41	0.60%	703	10.29%	6,090	89.11%	99.40%	11.65	58	0.82%	757	10.76%	6,222	88.42%	99.40%	12.25
24	8802	MTB-EST	544	16.65%	539	16.49%	2,185	66.86%	83.35%	2.03	438	19.48%	383	17.03%	1,428	63.49%	83.35%	2.55
25	8001	ITOCHU	552	5.40%	1,443	14.11%	8,235	80.50%	94.60%	3.09	416	3.80%	1,447	13.21%	9,092	82.99%	94.60%	3.55

Note1: Excluded the executions from: before 9AM, lunch break, and after 3PM

Note2: Price improvement is calculated by comparing the execution price against the primary market's best bid for each sell or best offer for each buy at the point of execution and is calculated from the perspective of the Taker side of the trade