

Japannext PTS Monthly Statistics

August 2012

Registration as a Financial Instrument Business Operator under the Financial Instruments and Exchange Act (FIEA) (including authorization to operate a Proprietary Trading System (PTS)),
Director of Kanto Local Finance Bureau (Kinsho) No.45

TEL: +81-3-4577-4040 FAX:+81-3-3261-1702

WEB Japanese: <http://www.japannext.co.jp/ja>

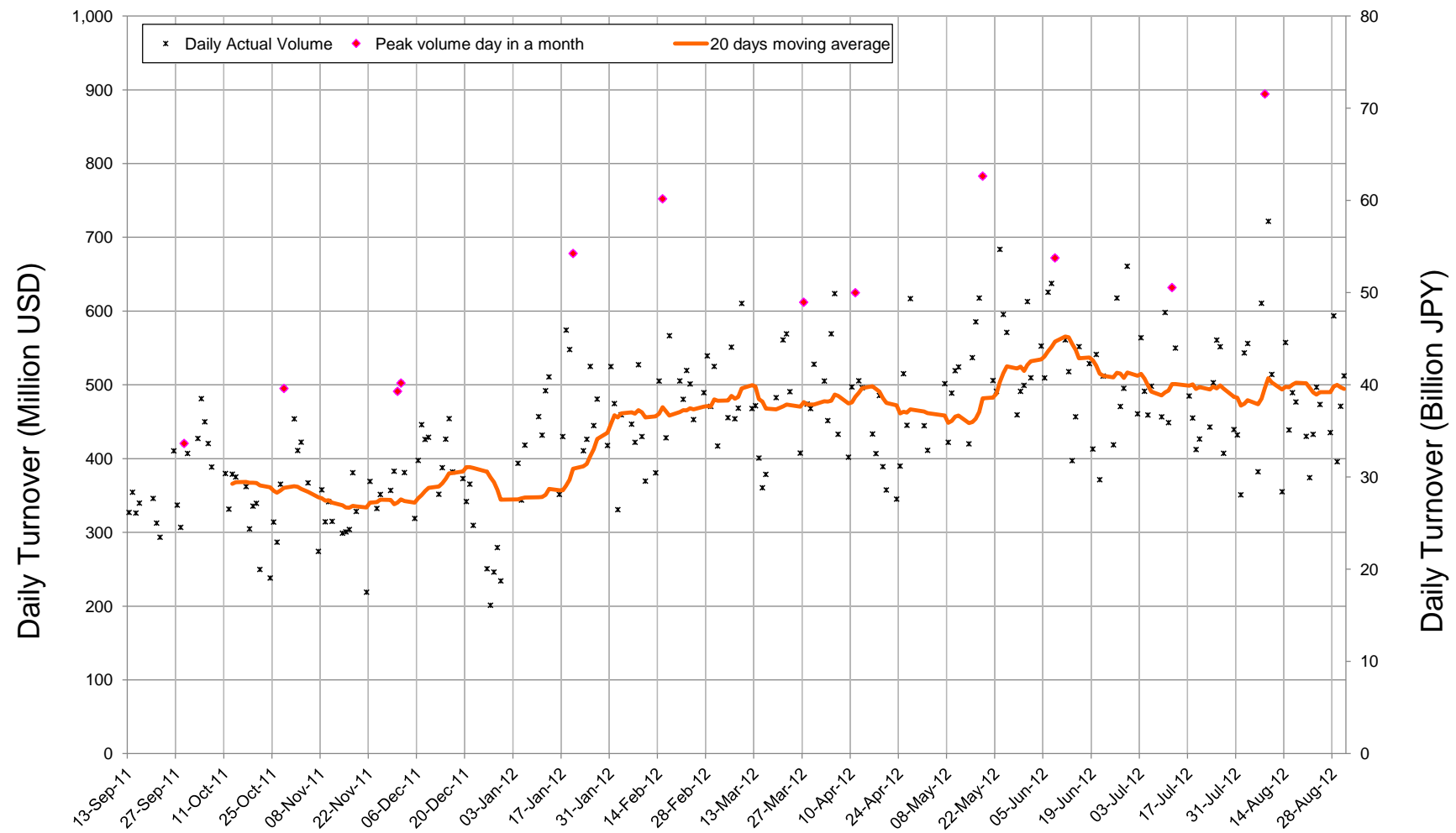
MAIL: ptsbiz@japannext.co.jp

English: <http://www.japannext.co.jp/en>

Disclaimer

Information provided is for reference purposes only and does not constitute financial product advice nor is constituted as an offer to sell or solicitation to buy any security. The ownership and intellectual property rights of this information are solely and exclusively belong to SBI Japannext Co.,Ltd.("SBIJ") . According users are permitted to access and use the Information for their own personal, non-commercial and internal-use-only. Although SBIJ has made every effort to ensure the accuracy of the information as at the date of publication, SBIJ does not give any warranty as to the accuracy, reliability or completeness of the information. To the extent permitted by law, SBIJ and its employees, officers and contractors shall not be liable for any loss or damage arising in any way (including by way of negligence) from or in connection with any information provided or omitted or from anyone acting or refraining to act in reliance on this information.

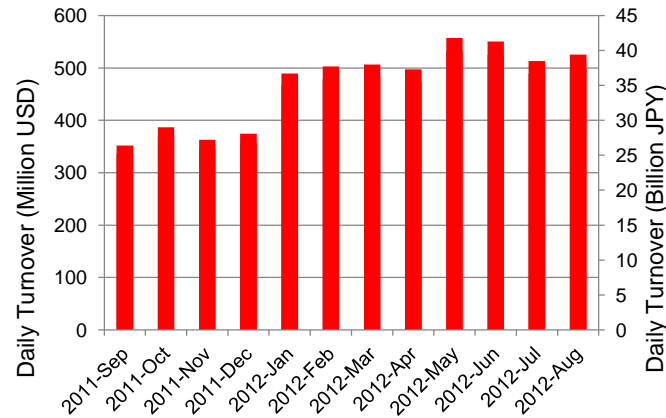
Daily Turnover of Daytime Session



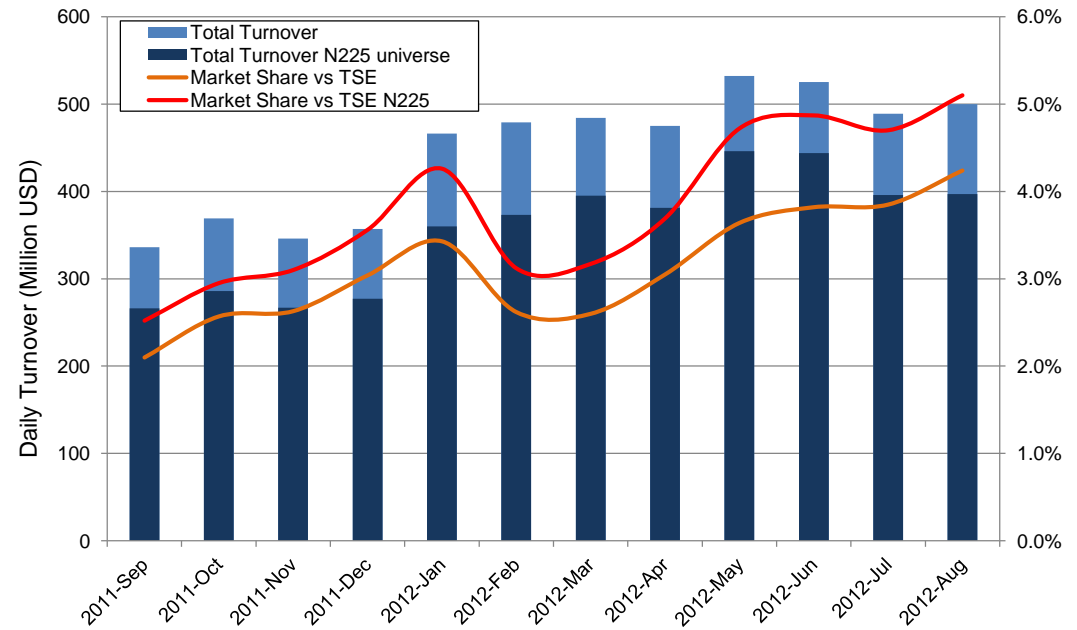
*1USD=78.66JPY

Summary of Daytime Session by Month

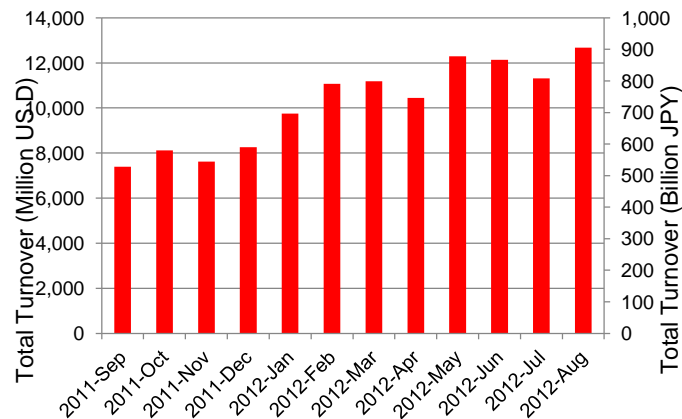
Average Daily Turnover by Month



Market Share vs TSE Turnover



Total Turnover by Month

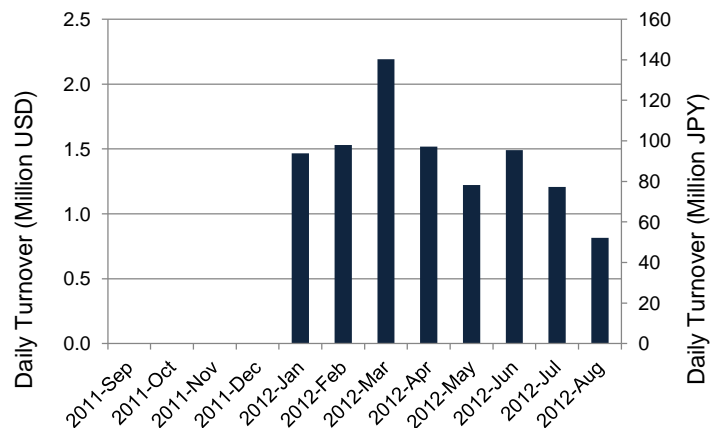


	11-Oct	11-Nov	11-Dec	12-Jan	12-Feb	12-Mar	12-Apr	12-May	12-Jun	12-Jul	12-Aug	
Value	369	346	357	466	479	484	475	532	525	489	500	(MM USD)
(N225)	286	267	277	360	373	395	381	446	444	396	397	(MM USD)
Share	2.57%	2.63%	3.04%	3.43%	2.62%	2.60%	3.05%	3.64%	3.82%	3.85%	4.24%	
(N225)	2.95%	3.10%	3.56%	4.26%	3.12%	3.17%	3.69%	4.72%	4.87%	4.70%	5.10%	
Improve	9.42	9.81	9.22	8.63	8.69	9.23	9.13	9.05	9.95	10.21	11.05	(N225 BPS)
Spread	26.45	26.86	25.46	25.34	25.88	26.01	26.16	26.26	26.82	27.69	30.80	(N225 BPS)

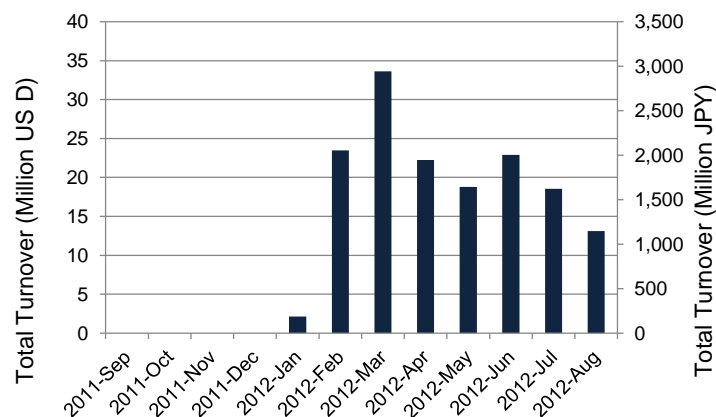
*1USD=78.66JPY

Summary of Nighttime Session by Month

Average Daily Turnover by Month



Total Turnover by Month



Turnover Top 30 Names in Nighttime Session of Month

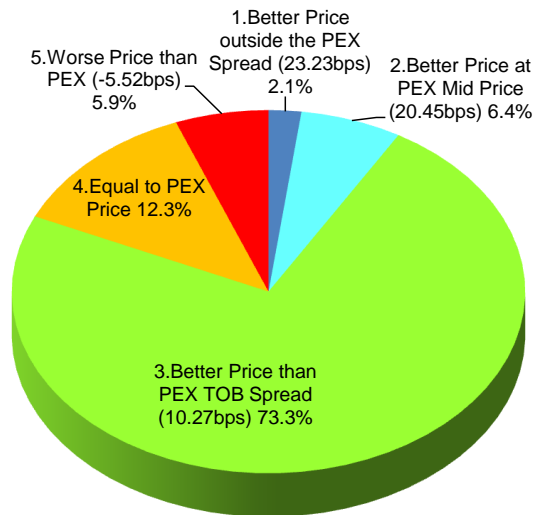
Rank	Symbol	Description	Turnover (USD)	Market Share (%)
1	6753	SHARP	2,949,912	0.04
2	8411	MIZUHO	2,760,788	0.11
3	6758	SONY	424,945	0.01
4	8306	MUFG	395,952	0.01
5	7448	JEANS M	377,805	0.37
6	7203	TOYOTA	358,036	0.01
7	1757	CREA HD	332,028	0.30
8	7267	HONDA	295,967	0.01
9	8058	MITBISI	290,255	0.01
10	6054	LIVESENS	261,801	0.33
11	6063	EAJ	256,697	0.22
12	7751	CANON	251,421	0.00
13	2132	IREP	248,662	1.01
14	2766	JWD	240,113	0.21
15	9505	HKRK-PW	220,658	0.05
16	5216	KURAMOT	218,660	0.33
17	6301	KOMATSU	183,296	0.01
18	3661	M-UP	180,647	0.40
19	2432	DENA	175,074	0.01
20	9419	WIRELESG	170,443	0.07
21	4565	SOSEI	154,523	0.16
22	8166	TAKA-Q	146,897	0.19
23	6752	PANASNIC	132,782	0.00
24	9768	IDEA	124,231	0.57
25	3856	REALCOM	124,039	2.23
26	9419	WIRELESG	170,443	0.07
27	4565	SOSEI	154,523	0.16
28	8166	TAKA-Q	146,897	0.19
29	6752	PANASNIC	132,782	0.00
30	9768	IDEA	124,231	0.57

*1USD=78.66JPY

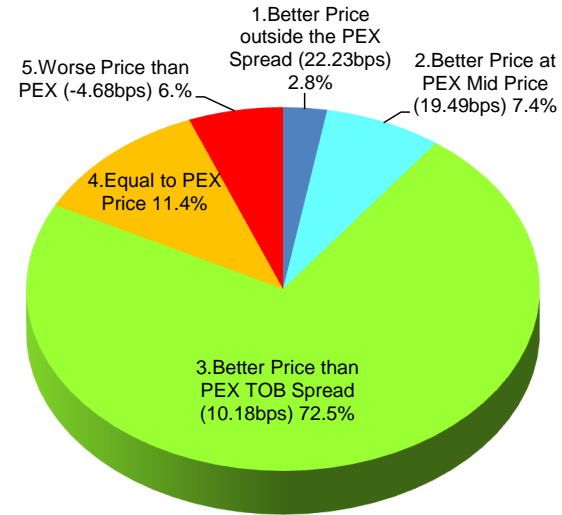
Daytime Session Execution

Nikkei 225 universe in August-2012

PEX : Primary Exchange



BUY Improvement



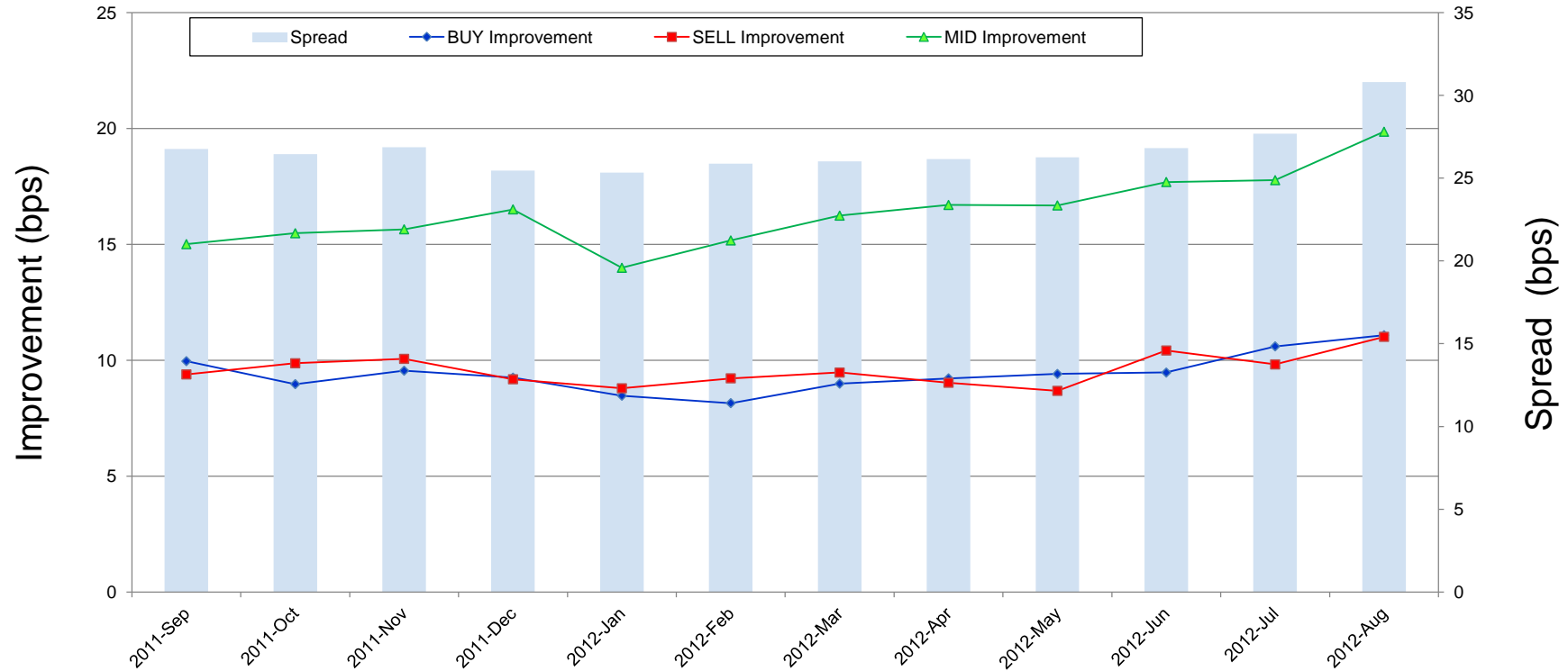
SELL Improvement

Note1: Excluded the executions from: before 9AM, lunch break, and after 3PM

Note2: Price improvement is calculated by comparing the execution price against the primary market's best bid for each sell or best offer for each buy at the point of execution and is calculated from the perspective of the Taker side of the trade

Improvement of Execution

Nikkei 225 universe in August-2012



Note1: Excluded the executions from: before 9AM, lunch break, and after 3PM

Note2: Price improvement is calculated by comparing the execution price against the primary market's best bid for each sell or best offer for each buy at the point of execution and is calculated from the perspective of the Taker side of the trade

Turnover Top 50 Names in Daytime Session

Ranking for August-2012

Rank	Symbol	Description	Turnover (Million USD)	Market Share (%)
1	7203	TOYOTA	362.60	6.77
2	8306	MUFG	314.37	6.59
3	8411	MIZUHO	252.68	10.50
4	7201	NISSAN	230.01	8.99
5	9432	NTT	227.63	12.06
6	7267	HONDA	220.32	5.74
7	6954	FANUC	187.51	4.89
8	4503	ASTELLAS	177.64	9.70
9	9433	KDDI	159.77	8.76
10	6501	HITACHI	155.83	5.71
11	8058	MITBISI	150.77	5.40
12	6752	PANASNIC	149.99	5.14
13	8316	SMFG	149.36	4.08
14	4502	TAKEDAP	140.34	9.07
15	8001	ITOCHU	131.99	10.41
16	8031	MITSUI	131.38	6.36
17	9020	JR EAST	126.77	9.27
18	7751	CANON	122.85	2.32
19	6502	TOSHIBA	115.76	6.04
20	6758	SONY	105.55	3.28
21	8035	TKOELCN	100.78	5.97
22	8830	SMIRE&D	99.94	8.26
23	6971	KYOCERA	96.67	6.74
24	8002	MARBENI	95.92	7.63
25	2914	JT	95.67	3.86

*1USD=78.66JPY

Rank	Symbol	Description	Turnover (Million USD)	Market Share (%)
26	4063	SINETUC	93.70	7.04
27	9984	SOFTBNK	88.56	2.16
28	8802	MTB-EST	87.22	6.47
29	6503	MELCO	86.58	7.63
30	8591	ORIX	85.72	7.50
31	8801	MTI-FU	82.96	6.57
32	5401	NPSTEEL	82.36	5.33
33	8053	SMITOMO	79.87	7.03
34	5020	JX	75.39	6.27
35	5108	BRIDSTN	74.23	5.80
36	4523	EISAI	74.08	7.30
37	1605	INPEX	73.80	6.52
38	9531	TKO-GAS	73.21	6.96
39	8267	AEON	70.65	8.10
40	7011	MHI	70.31	6.46
41	6301	KOMATSU	70.04	2.31
42	9503	KEPCO	69.86	2.89
43	9437	DOCOMO	69.18	4.61
44	8604	NOMRAHD	69.05	3.60
45	3382	7&I-HD	67.55	3.11
46	8309	SMTRUST	66.63	8.05
47	2651	LAWSON	64.54	7.67
48	9202	ANA	63.67	8.33
49	5411	JFE HD	62.31	4.24
50	9104	MTI-OSK	62.19	5.70

Improvement of Monthly Turnover for Top 25 Names

Ranking for August-2012

Rank	Symbol	Name	Sell Executions							Improve Avg bps	Buy Executions							Improve Avg bps
			Worse(A)		Equal(B)		Better (C)		(B)+(C)		Worse(A)		Equal(B)		Better (C)		(B)+(C)	
1	7203	TOYOTA	381	2.92%	1,109	8.51%	11,546	88.57%	97.08%	4.56	414	3.58%	1,239	10.71%	9,916	85.71%	97.08%	4.55
2	8306	MUFG	182	0.94%	1,808	9.30%	17,446	89.76%	99.06%	8.47	245	1.21%	1,879	9.29%	18,099	89.50%	99.06%	9.60
3	8411	MIZUHO	56	0.24%	541	2.29%	23,042	97.47%	99.76%	30.71	115	0.43%	375	1.40%	26,345	98.17%	99.76%	34.04
4	7201	NISSAN	437	2.74%	1,695	10.63%	13,809	86.63%	97.26%	3.76	527	3.64%	1,817	12.54%	12,140	83.82%	97.26%	4.19
5	9432	NTT	333	3.72%	962	10.74%	7,666	85.55%	96.28%	3.95	196	2.38%	965	11.72%	7,073	85.90%	96.28%	4.10
6	7267	HONDA	2,804	24.60%	2,124	18.63%	6,470	56.76%	75.40%	1.15	2,667	23.59%	2,627	23.23%	6,014	53.18%	75.40%	1.86
7	6954	FANUC	675	18.75%	604	16.78%	2,321	64.47%	81.25%	2.22	807	14.70%	1,377	25.09%	3,304	60.20%	81.25%	3.28
8	4503	ASTELLAS	381	5.02%	801	10.55%	6,411	84.43%	94.98%	4.04	361	4.92%	854	11.65%	6,115	83.42%	94.98%	4.13
9	9433	KDDI	111	2.35%	383	8.12%	4,223	89.53%	97.65%	4.86	133	2.69%	403	8.14%	4,415	89.17%	97.65%	5.33
10	6501	HITACHI	207	3.57%	675	11.63%	4,923	84.81%	96.43%	5.41	157	2.52%	742	11.93%	5,319	85.54%	96.43%	5.91
11	8058	MITBISI	1,096	14.72%	1,841	24.73%	4,507	60.55%	85.28%	1.61	1,112	14.52%	1,911	24.96%	4,633	60.51%	85.28%	2.25
12	6752	PANASNIC	832	4.98%	2,189	13.11%	13,678	81.91%	95.02%	4.65	741	4.08%	2,262	12.45%	15,164	83.47%	95.02%	6.00
13	8316	SMFG	1,206	15.88%	1,654	21.78%	4,733	62.33%	84.12%	1.28	1,211	17.67%	1,563	22.81%	4,078	59.52%	84.12%	1.84
14	4502	TAKEDAP	63	1.02%	670	10.81%	5,464	88.17%	98.98%	3.45	93	1.64%	453	8.01%	5,112	90.35%	98.98%	4.14
15	8001	ITOCHU	804	6.15%	1,359	10.39%	10,915	83.46%	93.85%	3.56	595	4.66%	1,260	9.86%	10,926	85.49%	93.85%	3.82
16	8031	MITSUI	1,205	12.04%	1,890	18.89%	6,911	69.07%	87.96%	2.45	930	10.80%	1,700	19.74%	5,984	69.47%	87.96%	3.06
17	9020	JR EAST	151	3.96%	323	8.46%	3,343	87.58%	96.04%	5.36	142	3.24%	382	8.72%	3,859	88.04%	96.04%	5.30
18	7751	CANON	470	8.09%	706	12.16%	4,632	79.75%	91.91%	1.60	584	9.16%	834	13.08%	4,957	77.76%	91.91%	1.84
19	6502	TOSHIBA	96	1.37%	657	9.40%	6,240	89.23%	98.63%	12.41	77	1.09%	648	9.20%	6,320	89.71%	98.63%	11.82
20	6758	SONY	404	4.93%	891	10.87%	6,900	84.20%	95.07%	3.20	548	6.48%	978	11.56%	6,935	81.96%	95.07%	3.37
21	8035	TKOELCN	282	8.17%	342	9.91%	2,828	81.92%	91.83%	3.97	295	7.24%	419	10.28%	3,360	82.47%	91.83%	4.32
22	8830	SMIRE&D	515	26.14%	281	14.26%	1,174	59.59%	73.86%	1.62	560	27.56%	323	15.90%	1,149	56.55%	73.86%	2.41
23	6971	KYOCERA	153	6.18%	251	10.13%	2,073	83.69%	93.82%	4.53	183	6.22%	342	11.63%	2,416	82.15%	93.82%	4.38
24	8002	MARBENI	161	3.63%	533	12.03%	3,738	84.34%	96.37%	4.96	117	2.64%	514	11.59%	3,802	85.77%	96.37%	5.91
25	2914	JT	1,144	12.23%	2,229	23.83%	5,982	63.94%	87.77%	1.30	1,112	12.02%	2,809	30.36%	5,332	57.62%	87.77%	1.78

Note1: Excluded the executions from: before 9AM, lunch break, and after 3PM

Note2: Price improvement is calculated by comparing the execution price against the primary market's best bid for each sell or best offer for each buy at the point of execution and is calculated from the perspective of the Taker side of the trade