

Japannext PTS Weekly Statistics

13 February 2012

Registration as a Financial Instrument Business Operator under the Financial Instruments and Exchange Act (FIEA) (including authorization to operate a Proprietary Trading System (PTS)),
Director of Kanto Local Finance Bureau (Kinsho) No.45

TEL: +81-3-4577-4040

FAX: +81-3-3261-1702

MAIL: ptsbiz@japannext.co.jp

WEB Japanese:

<http://www.japannext.co.jp/ja>

English: <http://www.japannext.co.jp/en>

Disclaimer

Information provided is for reference purposes only and does not constitute financial product advice nor is constituted as an offer to sell or solicitation to buy any security. The ownership and intellectual property rights of this information are solely and exclusively belong to SBI Japannext Co.,Ltd. ("SBIJ"). According users are permitted to access and use the Information for their own personal, non-commercial and internal-use-only. Although SBIJ has made every effort to ensure the accuracy of the information as at the date of publication, SBIJ does not give any warranty as to the accuracy, reliability or completeness of the information. To the extent permitted by law, SBIJ and its employees, officers and contractors shall not be liable for any loss or damage arising in any way (including by way of negligence) from or in connection with any information provided or omitted or from anyone acting or refraining to act in reliance on this information.

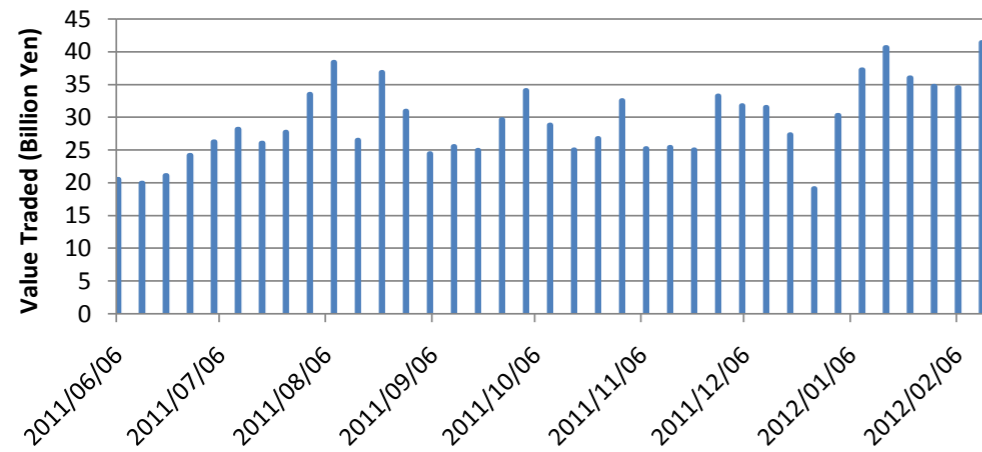
Daily Average Statistics of The Week

Daily Average in Week of 13-February-2012

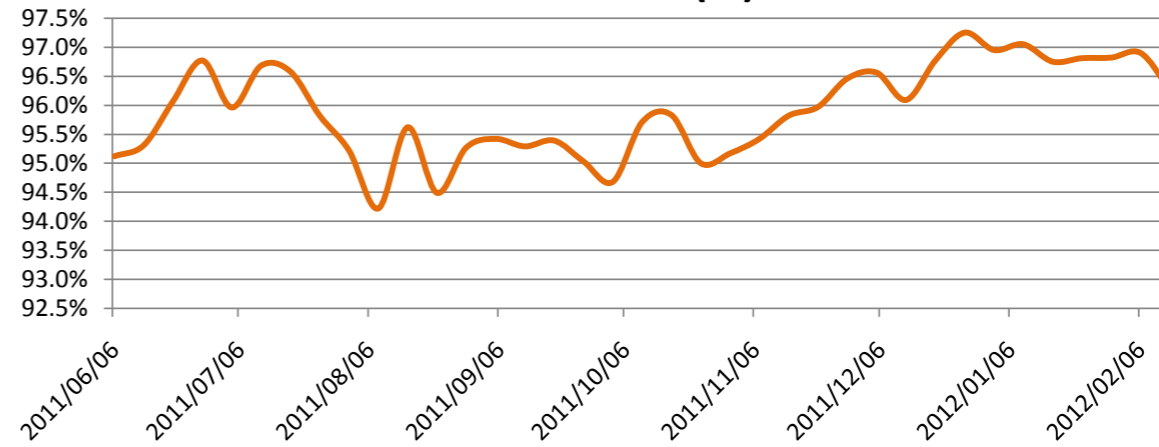
	# of Shares Traded	Turnover (JPY)	Universe	No of Trades	% of Inside	Avg Improvement(bps)
Total	69,587,767	41,421,231,086	855	107,709	96.27%	10.02
Large CAP	35,931,139	26,114,607,492	100	47,443	95.81%	7.12
Mid CAP	28,057,643	13,205,004,482	394	46,798	96.65%	9.37
Small CAP	5,598,985	2,101,619,112	361	13,467	96.61%	31.84

*Price improvement is calculated by comparing the execution price against the primary market's best bid for each sell or best offer for each buy at the point of execution and is calculated from the perspective of the Taker side of the trade

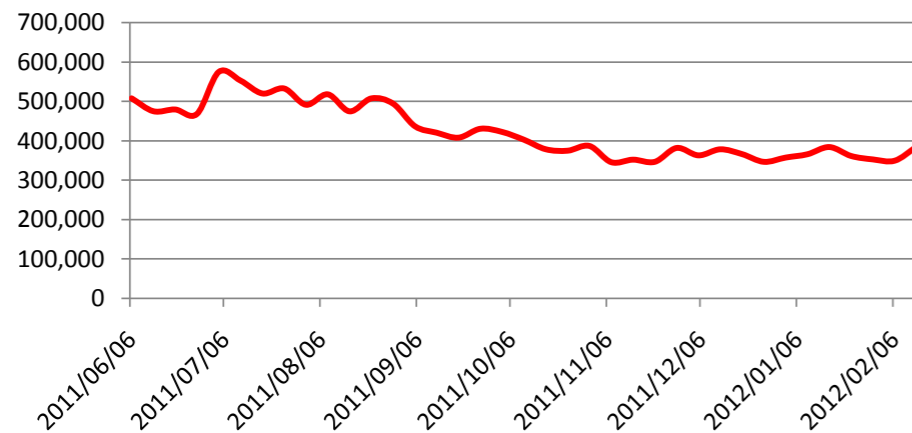
Average Turnover



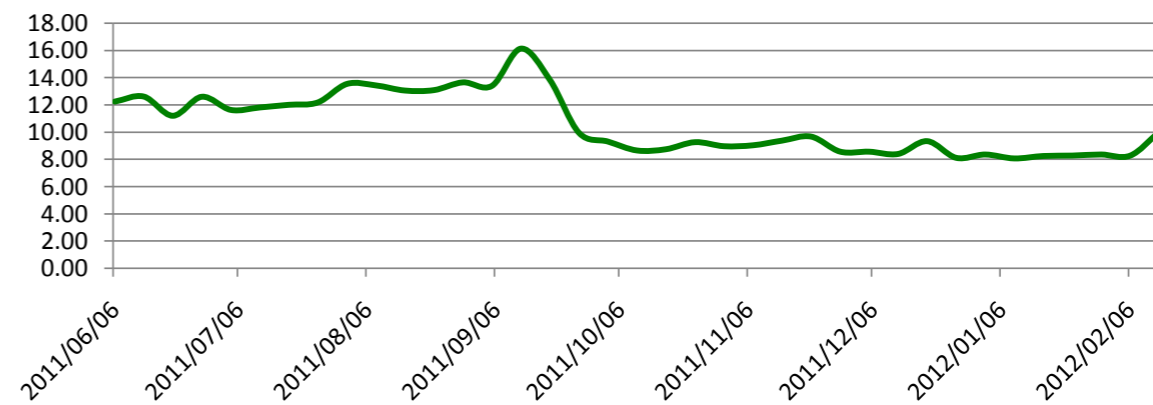
Inside Ratio(%)



Average Turnover per Trade



Average Improvement(bps)



Top 5 Average Turnover of The Week

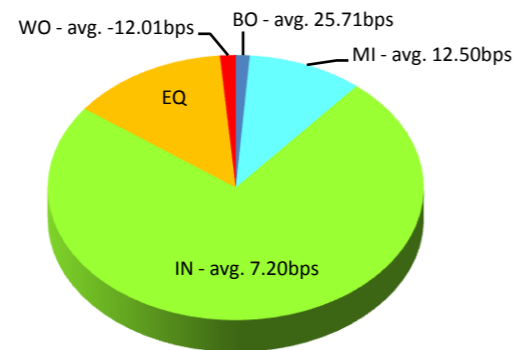
Weekly Total in Week of 13-February-2012

Symbol	Description	Turnover (JPY)	Last Price	Market Shr(%)	Avg Improvement(bps)
8306.T	MUFG	7,115,088,270	406	4.05	7.83
7751.T	CANON	6,291,826,850	3,550	5.34	4.05
8411.T	MIZUHO	5,861,287,800	128	5.31	26.85
7203.T	TOYOTA	3,804,287,400	3,285	2.13	4.37
6954.T	FANUC	3,553,048,300	14,250	3.45	3.08

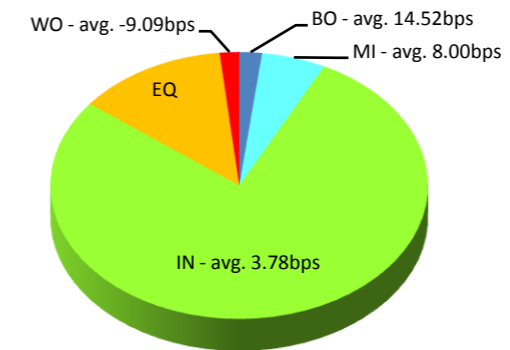
Execution improvement patterns categorized into 5 groups.

- (1) Better Outside ("BO") – better price outside the Primary Exchange spread
- (2) Mid Price ("MI") – better price at Primary Exchange mid price
- (3) Inside BBO ("IN") – better price inside Primary Exchange BBO excluding mid price
- (4) Equal ("EQ") – equal price to Primary Exchange BBO
- (5) Worse ("WO") – worse price than Primary Exchange

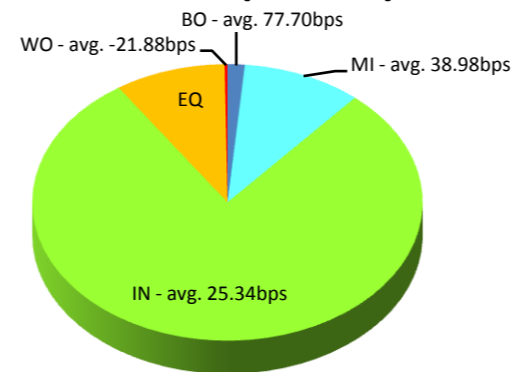
MUFG(8306.T)



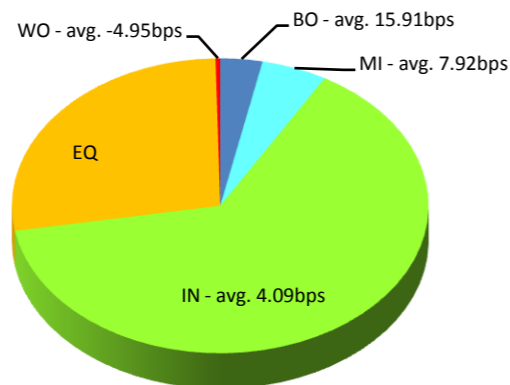
CANON(7751.T)



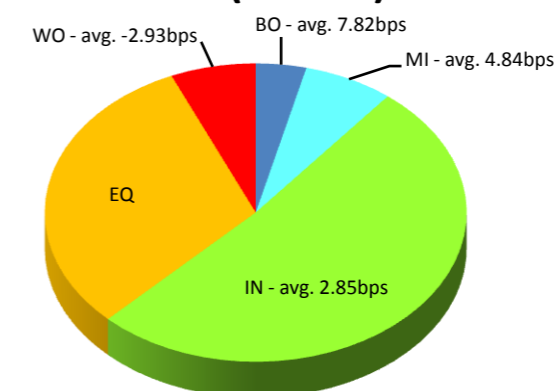
MIZUHO(8411.T)



TOYOTA(7203.T)



FANUC(6954.T)



Note1: Excluded the executions from: before 9AM, lunch break, and after 3PM

Note2: Price improvement is calculated by comparing the execution price against the primary market's best bid for each sell or best offer for each buy at the point of execution and is calculated from the perspective of the Taker side of the trade

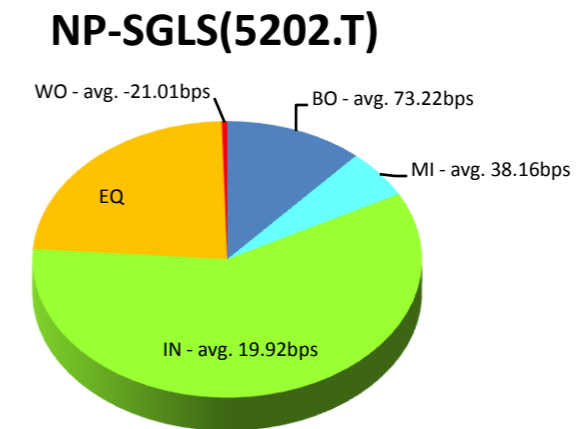
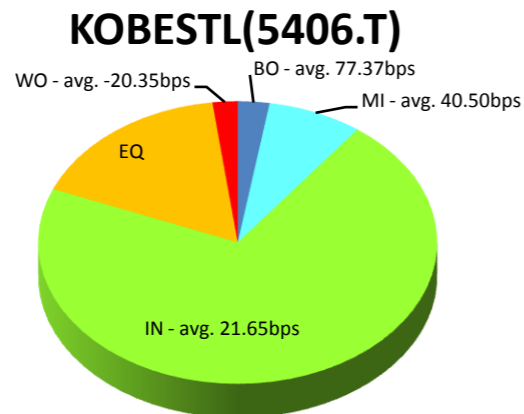
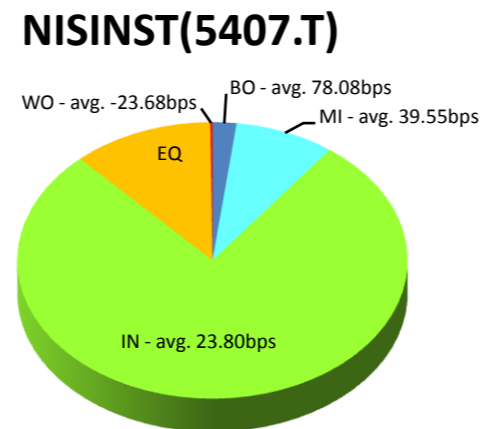
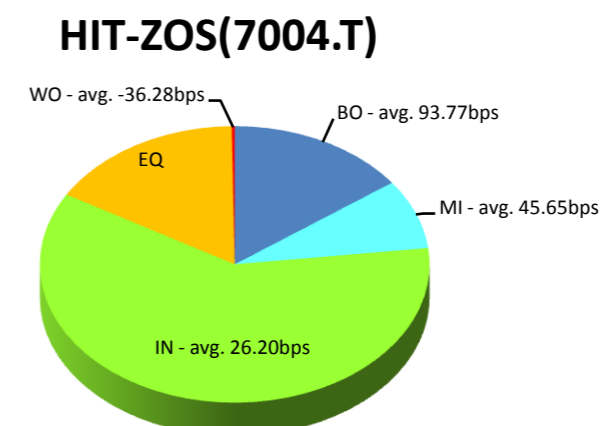
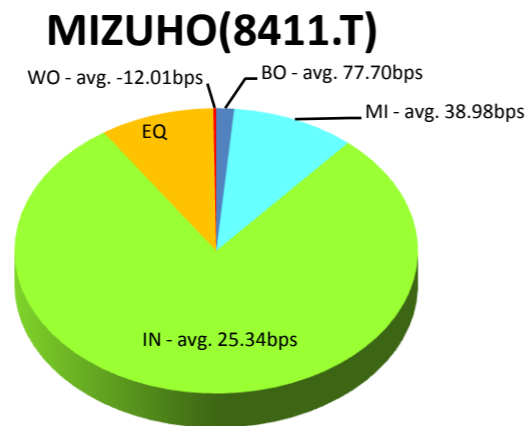
Top 5 Average Improvement of The Week

Weekly Total in Week of 13-February-2012

Symbol	Description	Turnover (JPY)	Last Price	Market Shr(%)	Avg Improvement(bps)
8411.T	MIZUHO	5,861,287,800	128	5.31	26.85
7004.T	HIT-ZOS	121,054,150	108	3.97	28.52
5407.T	NISINST	106,954,200	128	4.54	25.31
5406.T	KOBESTL	360,614,200	135	3.52	23.50
5202.T	NP-SGLS	403,268,700	139	1.68	21.52

Execution improvement patterns categorized into 5 groups.

- (1) Better Outside ("BO") – better price outside the Primary Exchange spread
- (2) Mid Price ("MI") – better price at Primary Exchange mid price
- (3) Inside BBO ("IN") – better price inside Primary Exchange BBO excluding mid price
- (4) Equal ("EQ") – equal price to Primary Exchange BBO
- (5) Worse ("WO") – worse price than Primary Exchange



Note1: Excluded the executions from: before 9AM, lunch break, and after 3PM

Note2: Price improvement is calculated by comparing the execution price against the primary market's best bid for each sell or best offer for each buy at the point of execution and is calculated from the perspective of the Taker side of the trade

Note3: Weekly Total Turnover > 100 Million JPY

Top 5 ETFs & REITs of The Week

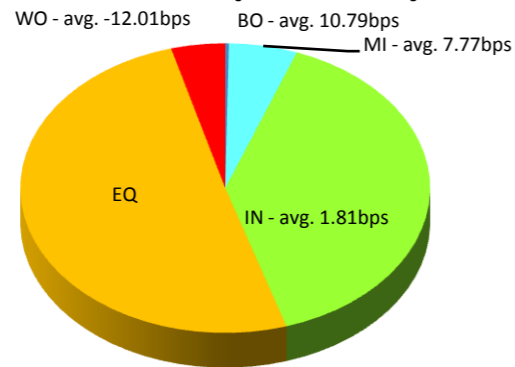
Weekly Total in Week of 13-February-2012

Symbol	Description	Turnover (JPY)	Last Price	Market Shr(%)	Avg Improvement(bps)
1321.OS	225FUND	430,492,523	9,530	2.33	2.53
1306.T	TOPIX F	151,389,119	822	1.90	4.13
1330.T	IDXF225	95,824,390	9,540	0.88	1.71
1320.OS	ETF225	77,267,696	9,510	0.98	0.72
8951.T	NBF	74,899,700	717,000	0.99	1.91

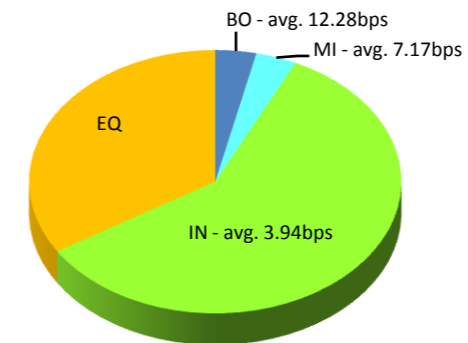
Execution improvement patterns categorized into 5 groups.

- (1) Better Outside ("BO") – better price outside the Primary Exchange spread
- (2) Mid Price ("MI") – better price at Primary Exchange mid price
- (3) Inside BBO ("IN") – better price inside Primary Exchange BBO excluding mid price
- (4) Equal ("EQ") – equal price to Primary Exchange BBO
- (5) Worse ("WO") – worse price than Primary Exchange

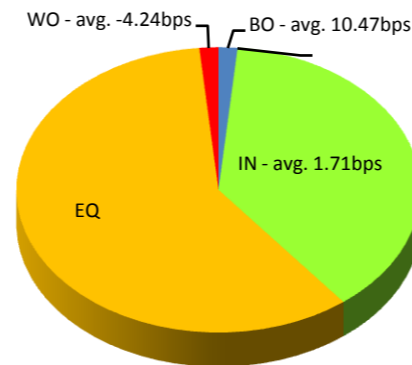
225FUND(1321.OS)



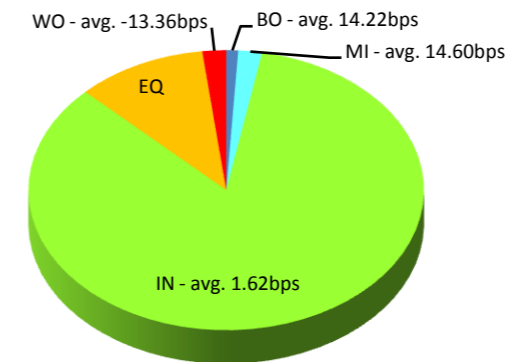
TOPIX F(1306.T)



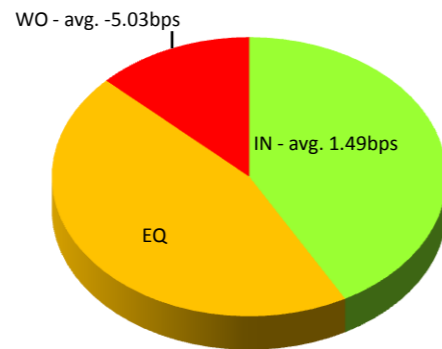
IDXF225(1330.T)



NBF(8951.T)



ETF225(1320.OS)



Note1: Excluded the executions from before 9AM, lunch break, and after 3PM

Note2: Price improvement is calculated by comparing the execution price against the primary market's best bid for each sell or best offer for each buy at the point of execution and is calculated from the perspective of the Taker side of the trade