

Japannext PTS Weekly Statistics

9 July 2012

Registration as a Financial Instrument Business Operator under the Financial Instruments and Exchange Act (FIEA) (including authorization to operate a Proprietary Trading System (PTS)),
Director of Kanto Local Finance Bureau (Kinsho) No.45

TEL: +81-3-4577-4040

FAX: +81-3-3261-1702

MAIL: ptsbiz@japannext.co.jp

WEB Japanese:

<http://www.japannext.co.jp/ja>

English: <http://www.japannext.co.jp/en>

Disclaimer

Information provided is for reference purposes only and does not constitute financial product advice nor is constituted as an offer to sell or solicitation to buy any security. The ownership and intellectual property rights of this information are solely and exclusively belong to SBI Japannext Co.,Ltd. ("SBIJ"). According users are permitted to access and use the Information for their own personal, non-commercial and internal-use-only. Although SBIJ has made every effort to ensure the accuracy of the information as at the date of publication, SBIJ does not give any warranty as to the accuracy, reliability or completeness of the information. To the extent permitted by law, SBIJ and its employees, officers and contractors shall not be liable for any loss or damage arising in any way (including by way of negligence) from or in connection with any information provided or omitted or from anyone acting or refraining to act in reliance on this information.

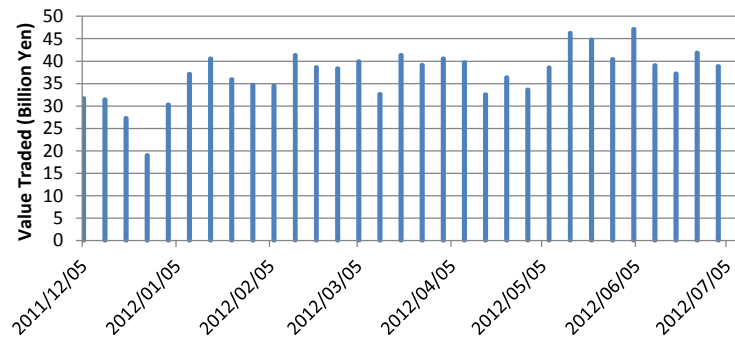
Daily Average Statistics of The Week

Daily Average in Week of 9-July-2012

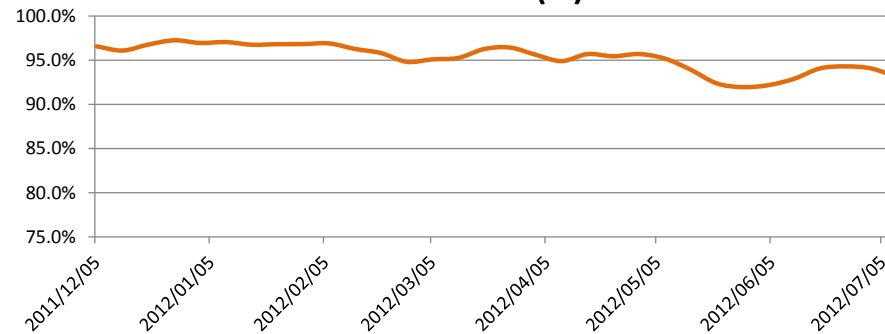
	# of Shares Traded	Turnover (JPY)	Universe	No of Trades	% of Inside	Avg Improvement(bps)
Total	67,037,556	42,246,322,542	790	90,650	93.04%	9.25
Large CAP	40,692,437	30,242,676,121	100	48,929	92.29%	8.61
Mid CAP	24,349,419	11,052,294,390	388	36,225	93.85%	9.98
Small CAP	1,995,700	951,352,031	302	5,496	94.39%	10.18

*Price improvement is calculated by comparing the execution price against the primary market's best bid for each sell or best offer for each buy at the point of execution and is calculated from the perspective of the Taker side of the trade

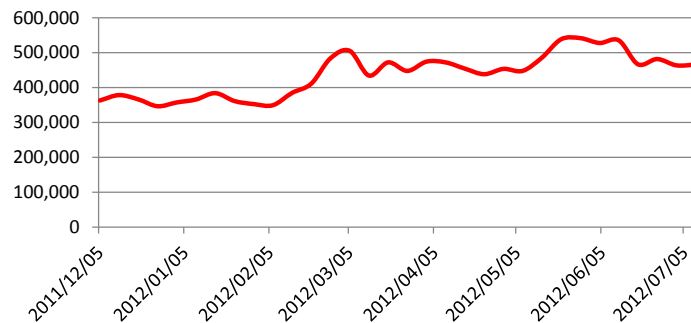
Average Turnover



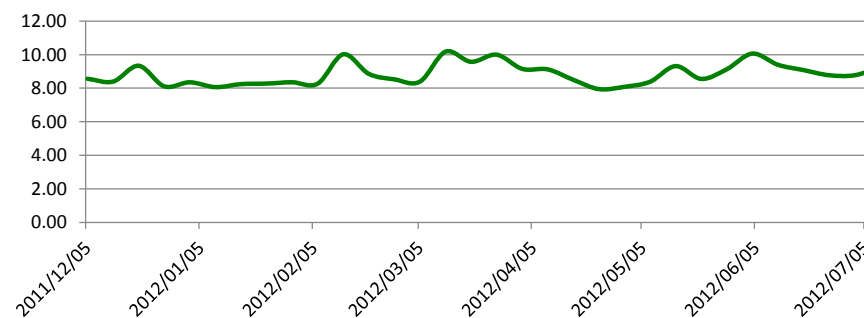
Inside Ratio(%)



Average Turnover per Trade



Average Improvement(bps)



Top 5 Average Turnover of The Week

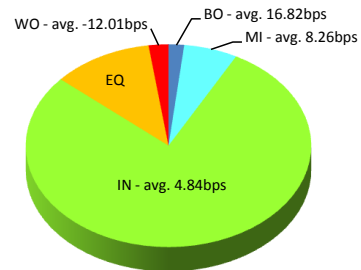
Weekly Total in Week of 9-July-2012

Symbol	Description	Turnover (JPY)	Last Price	Market Shr(%)	Avg Improvement(bps)
7203.T	TOYOTA	6,711,279,650	3,010	7.86	5.09
8306.T	MUFG	6,332,227,510	375	5.90	8.94
8411.T	MIZUHO	5,138,910,160	128	8.57	34.62
6954.T	FANUC	4,482,081,500	12,410	4.67	3.12
9432.T	NTT	4,329,072,050	3,675	11.00	4.34

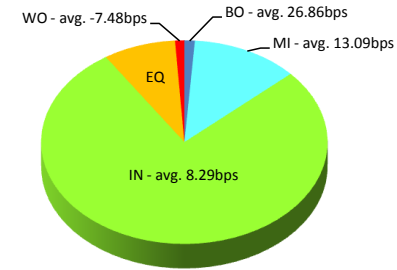
Execution improvement patterns categorized into 5 groups.

- (1) **Better Outside ("BO")** – better price outside the Primary Exchange spread
- (2) **Mid Price ("MI")** – better price at Primary Exchange mid price
- (3) **Inside BBO ("IN")** – better price inside Primary Exchange BBO excluding mid price
- (4) **Equal ("EQ")** – equal price to Primary Exchange BBO
- (5) **Worse ("WO")** – worse price than Primary Exchange

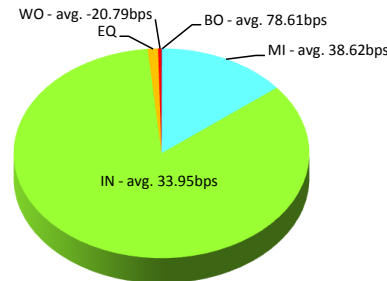
TOYOTA(7203.T)



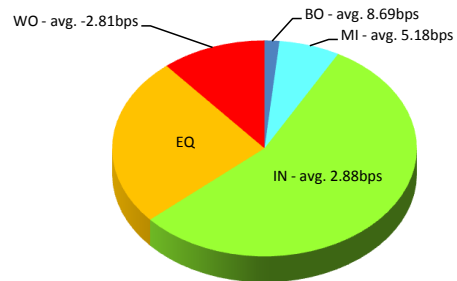
MUFG(8306.T)



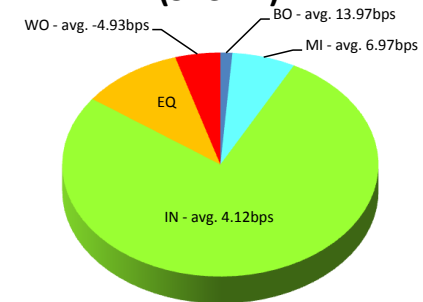
MIZUHO(8411.T)



FANUC(6954.T)



NTT(9432.T)



Note1: Excluded the executions from: before 9AM, lunch break, and after 3PM

Note2: Price improvement is calculated by comparing the execution price against the primary market's best bid for each sell or best offer for each buy at the point of execution and is calculated from the perspective of the Taker side of the trade

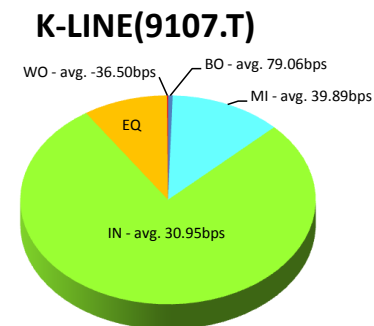
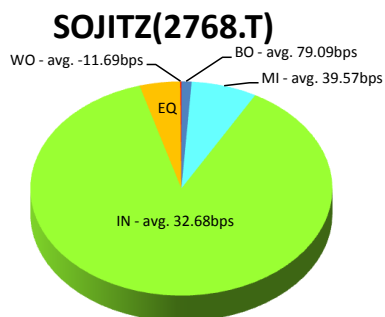
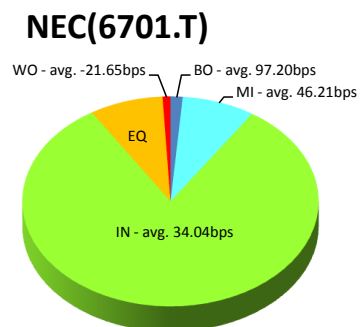
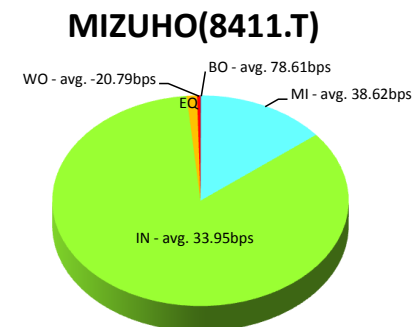
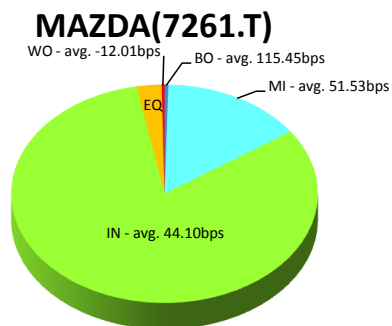
Top 5 Average Improvement of The Week

Weekly Total in Week of 9-July-2012

Symbol	Description	Turnover (JPY)	Last Price	Market Shr(%)	Avg Improvement(bps)
7261.T	MAZDA	884,076,900	95	7.07	45.25
8411.T	MIZUHO	5,138,910,160	128	8.57	34.62
6701.T	NEC	1,021,536,100	106	7.38	35.12
2768.T	SOJITZ	243,445,230	125	7.84	33.19
9107.T	K-LINE	590,969,200	122	1.52	32.17

Execution improvement patterns categorized into 5 groups.

- (1) **Better Outside ("BO")** – better price outside the Primary Exchange spread
- (2) **Mid Price ("MI")** – better price at Primary Exchange mid price
- (3) **Inside BBO ("IN")** – better price inside Primary Exchange BBO excluding mid price
- (4) **Equal ("EQ")** – equal price to Primary Exchange BBO
- (5) **Worse ("WO")** – worse price than Primary Exchange



Note1: Excluded the executions from: before 9AM, lunch break, and after 3PM

Note2: Price improvement is calculated by comparing the execution price against the primary market's best bid for each sell or best offer for each buy at the point of execution and is calculated from the perspective of the Taker side of the trade

Note3: Weekly Total Turnover > 100 Million JPY

Top 5 ETFs & REITs of The Week

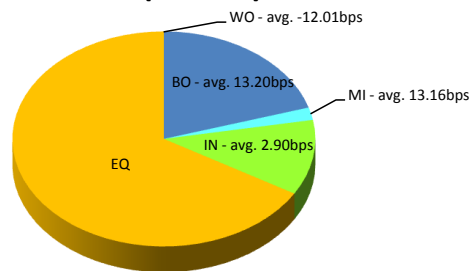
Weekly Total in Week of 9-July-2012

Symbol	Description	Turnover (JPY)	Last Price	Market Shr(%)	Avg Improvement(bps)
1306.T	TOPIX F	133,509,154	753	1.96	4.37
1330.T	IDXF225	87,461,500	8,850	1.39	4.07
8951.T	NBF	47,643,500	746,000	0.84	1.34
8952.T	JRE	22,220,000	722,000	0.47	2.11
3234.T	MORIHILS	9,185,100	346,000	1.85	1.47

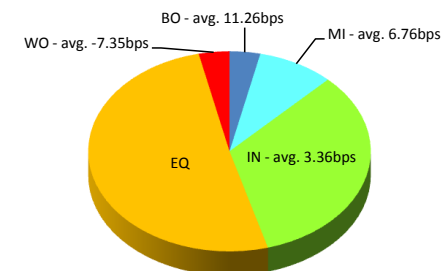
Execution improvement patterns categorized into 5 groups.

- (1) **Better Outside ("BO")** – better price outside the Primary Exchange spread
- (2) **Mid Price ("MI")** – better price at Primary Exchange mid price
- (3) **Inside BBO ("IN")** – better price inside Primary Exchange BBO excluding mid price
- (4) **Equal ("EQ")** – equal price to Primary Exchange BBO
- (5) **Worse ("WO")** – worse price than Primary Exchange

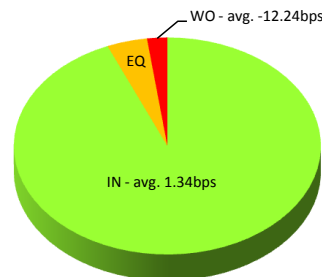
TOPIX F(1306.T)



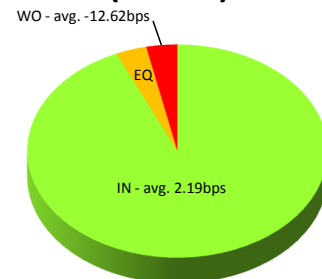
IDXF225(1330.T)



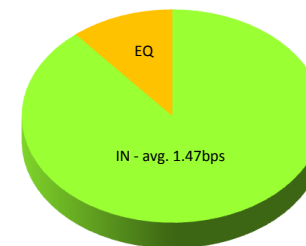
NBF(8951.T)



JRE(8952.T)



MORIHILS(3234.T)



Note1: Excluded the executions from before 9AM, lunch break, and after 3PM

Note2: Price improvement is calculated by comparing the execution price against the primary market's best bid for each sell or best offer for each buy at the point of execution and is calculated from the perspective of the Taker side of the trade