

Japannext PTS Monthly Statistics

March 2013

Registration as a Financial Instrument Business Operator under the Financial Instruments and Exchange Act (FIEA) (including authorization to operate a Proprietary Trading System (PTS)),
Director of Kanto Local Finance Bureau (Kinsho) No.45

TEL: +81-3-4577-4040 FAX:+81-3-3261-1702

WEB Japanese: <http://www.japannext.co.jp/ja>

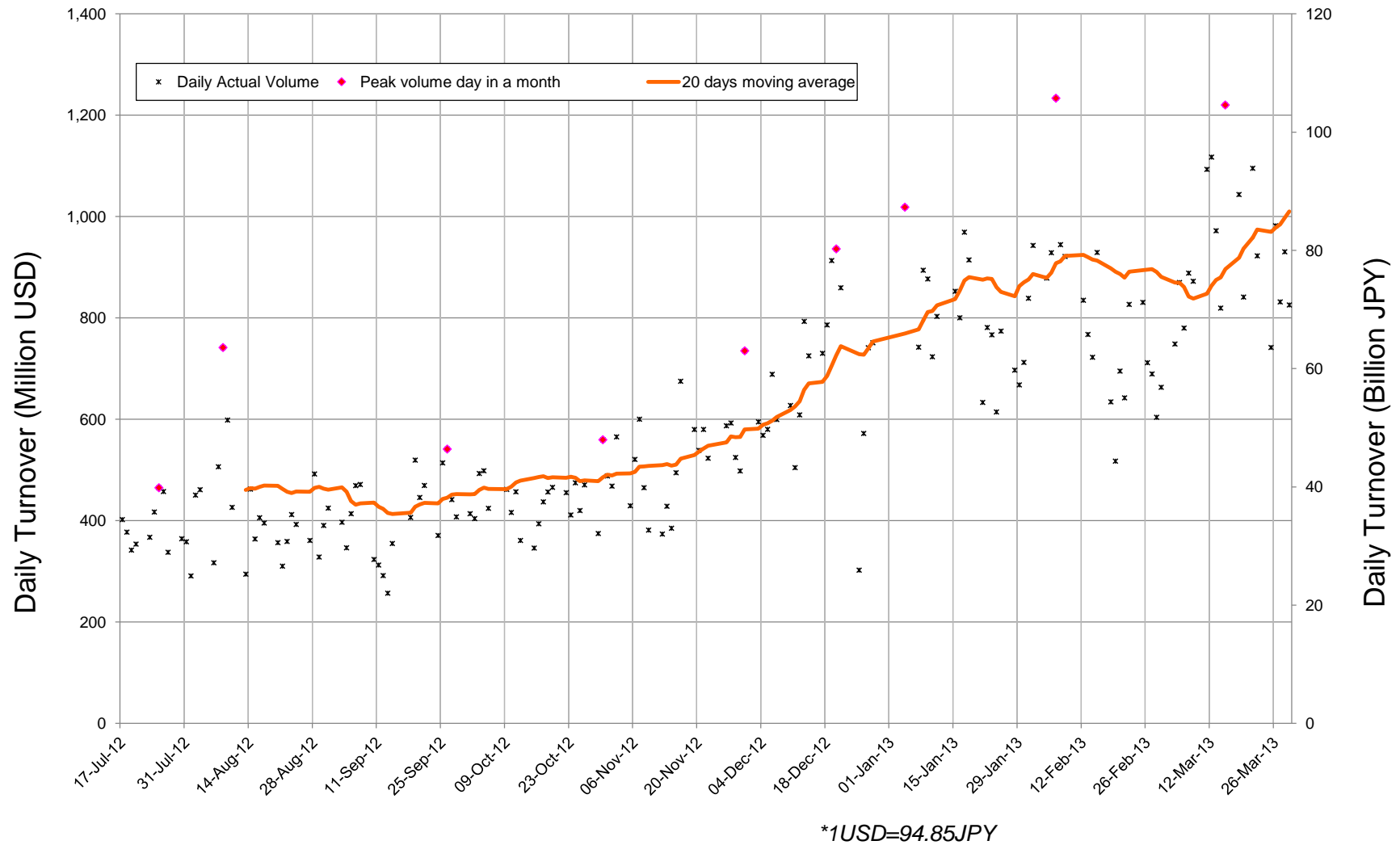
MAIL: ptsbiz@japannext.co.jp

English: <http://www.japannext.co.jp/en>

Disclaimer

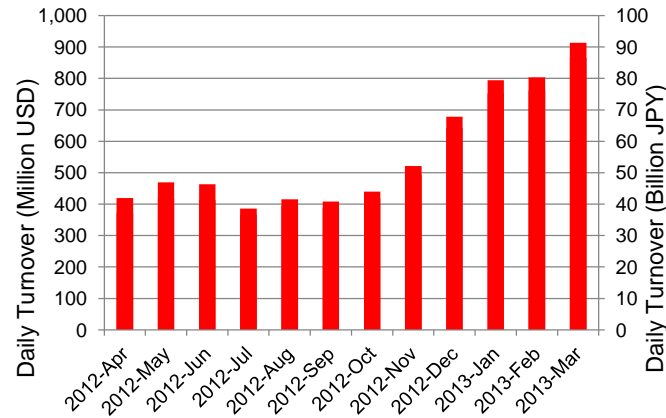
Information provided is for reference purposes only and does not constitute financial product advice nor is constituted as an offer to sell or solicitation to buy any security. The ownership and intellectual property rights of this information are solely and exclusively belong to SBI Japannext Co.,Ltd.("SBIJ") . According users are permitted to access and use the Information for their own personal, non-commercial and internal-use-only. Although SBIJ has made every effort to ensure the accuracy of the information as at the date of publication, SBIJ does not give any warranty as to the accuracy, reliability or completeness of the information. To the extent permitted by law, SBIJ and its employees, officers and contractors shall not be liable for any loss or damage arising in any way (including by way of negligence) from or in connection with any information provided or omitted or from anyone acting or refraining to act in reliance on this information.

Daily Turnover of Daytime Session

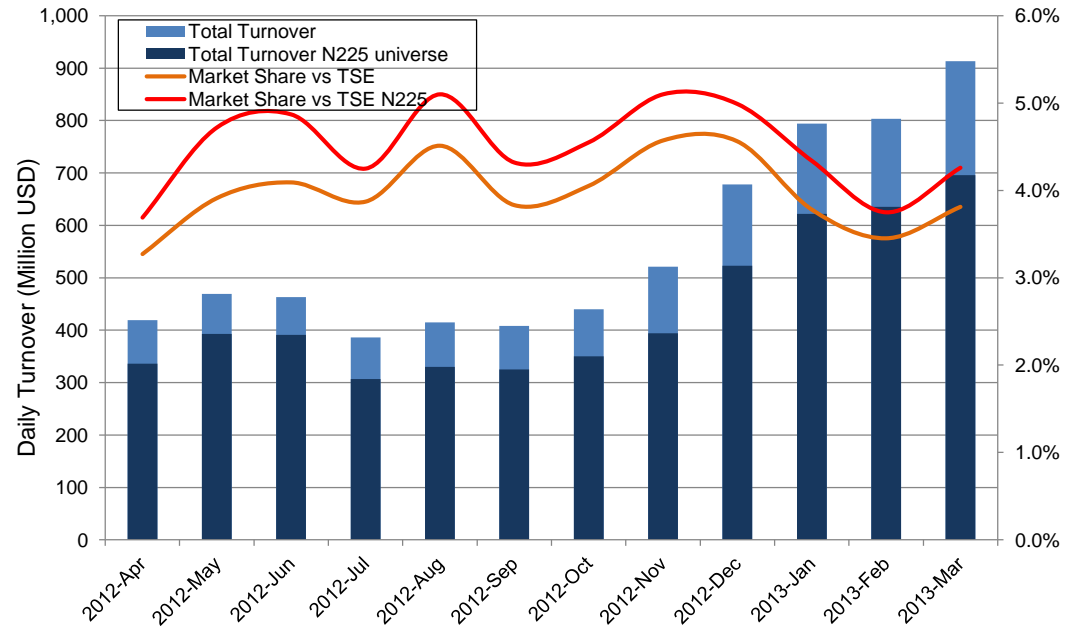


Summary of Daytime Session by Month

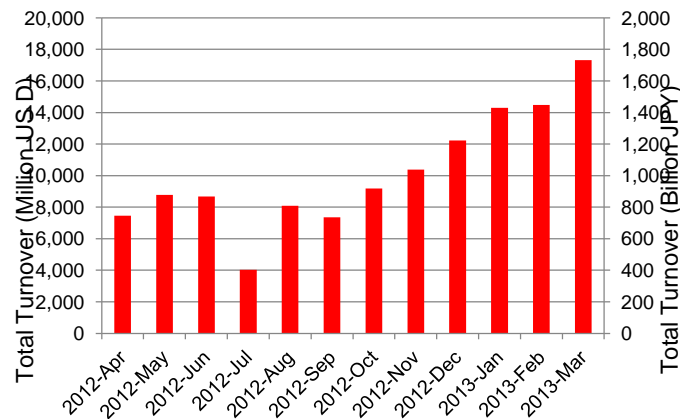
Average Daily Turnover by Month



Market Share vs TSE Turnover



Total Turnover by Month

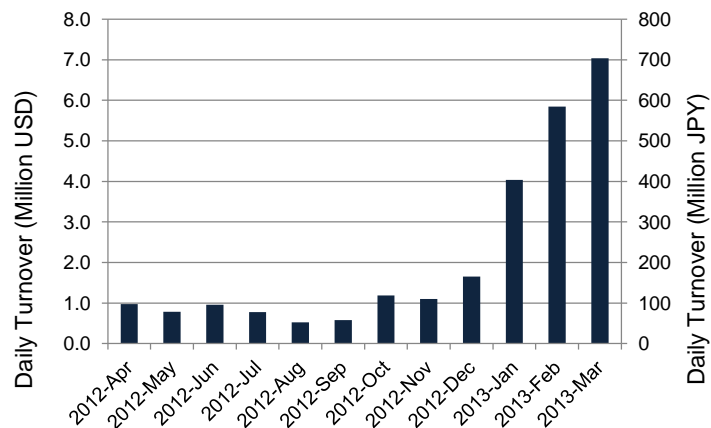


	12-May	12-Jun	12-Jul	12-Aug	12-Sep	12-Oct	12-Nov	12-Dec	13-Jan	13-Feb	13-Mar	
Value	469	463	386	415	408	440	521	678	794	803	913	(MM USD)
(N225)	393	391	307	330	325	350	394	523	622	635	696	(MM USD)
Share	3.91%	4.09%	3.87%	4.51%	3.83%	4.05%	4.57%	4.56%	3.78%	3.45%	3.81%	
(N225)	4.72%	4.87%	4.25%	5.10%	4.32%	4.55%	5.10%	4.99%	4.34%	3.75%	4.26%	
Improve	8.92	9.83	10.32	10.81	11.53	11.84	11.33	10.31	9.67	9.30	8.13	(N225 BPS)
TSE Spread	25.87	26.46	28.13	30.21	30.32	29.76	28.70	27.01	25.88	25.43	22.32	(N225 BPS)

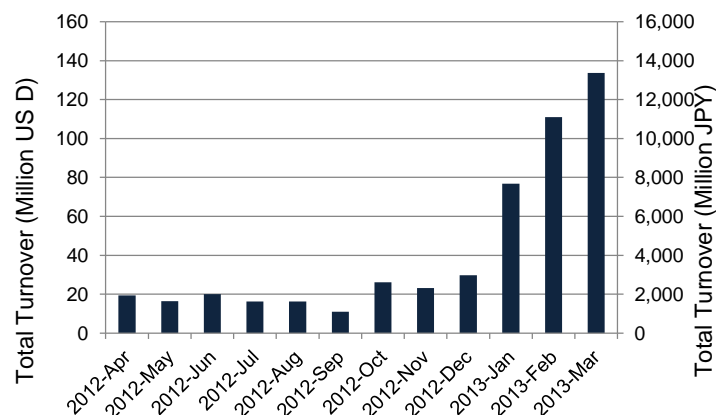
*1USD=94.85JPY

Summary of Nighttime Session by Month

Average Daily Turnover by Month



Total Turnover by Month



Turnover Top 30 Names in Nighttime Session of Month

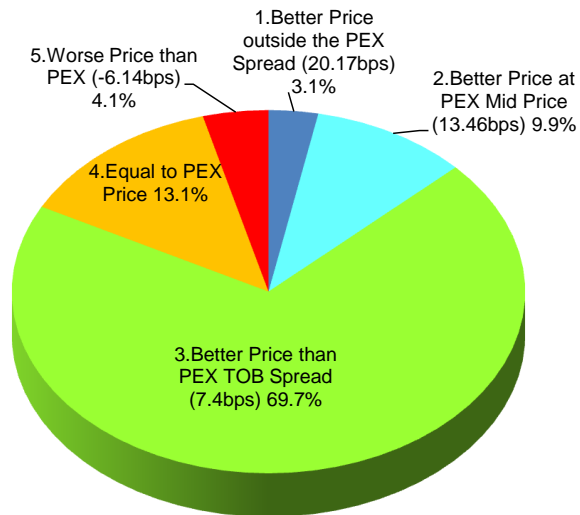
Rank	Symbol	Description	Turnover (USD)	Market Share vs PrimaryEX(%)
1	3765	GUNGHO	17,987,972	0.46
2	8411	MIZUHO	12,770,720	0.11
3	7774	J-TEC	5,459,861	0.69
4	6758	SONY	4,744,864	0.04
5	4583	CHIOME	4,545,846	0.88
6	7203	TOYOTA	3,912,733	0.04
7	4570	IBL	3,673,711	0.74
8	2395	SHINBIO	3,652,488	0.31
9	4571	NANOCARI	3,479,277	0.26
10	2160	GNI	3,353,241	0.45
11	8306	MUFG	2,990,971	0.03
12	4572	CARNABIO	2,902,773	0.81
13	1606	J DRILL	2,760,649	0.13
14	3004	SHINYEI	2,664,115	1.32
15	2931	EUGLENA	2,340,187	0.32
16	4586	MEDRX	2,144,949	0.28
17	2706	BROCCOL	2,136,221	0.46
18	4321	KENEDIX	2,055,378	0.04
19	8316	SMFG	1,944,656	0.02
20	4657	ENVCONT	1,920,836	1.53
21	3350	FONTZ HD	1,857,138	3.74
22	2370	MEDINET	1,578,332	0.32
23	7777	3DMATRIX	1,479,199	0.29
24	9984	SOFTBNK	1,375,314	0.02
25	4563	ANGESMG	1,257,888	0.34
26	4657	ENVCONT	1,920,836	1.53
27	3350	FONTZ HD	1,857,138	3.74
28	2370	MEDINET	1,578,332	0.32
29	7777	3DMATRIX	1,479,199	0.29
30	9984	SOFTBNK	1,375,314	0.02

*1USD=94.85JPY

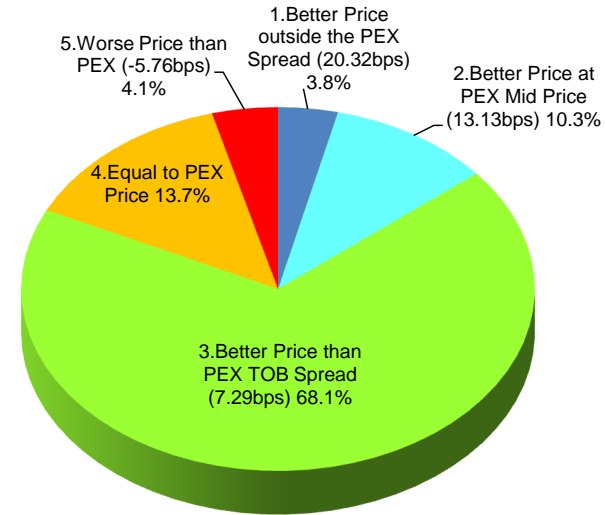
Daytime Session Execution

Nikkei 225 universe in March-2013

PEX : Primary Exchange



BUY Improvement



SELL Improvement

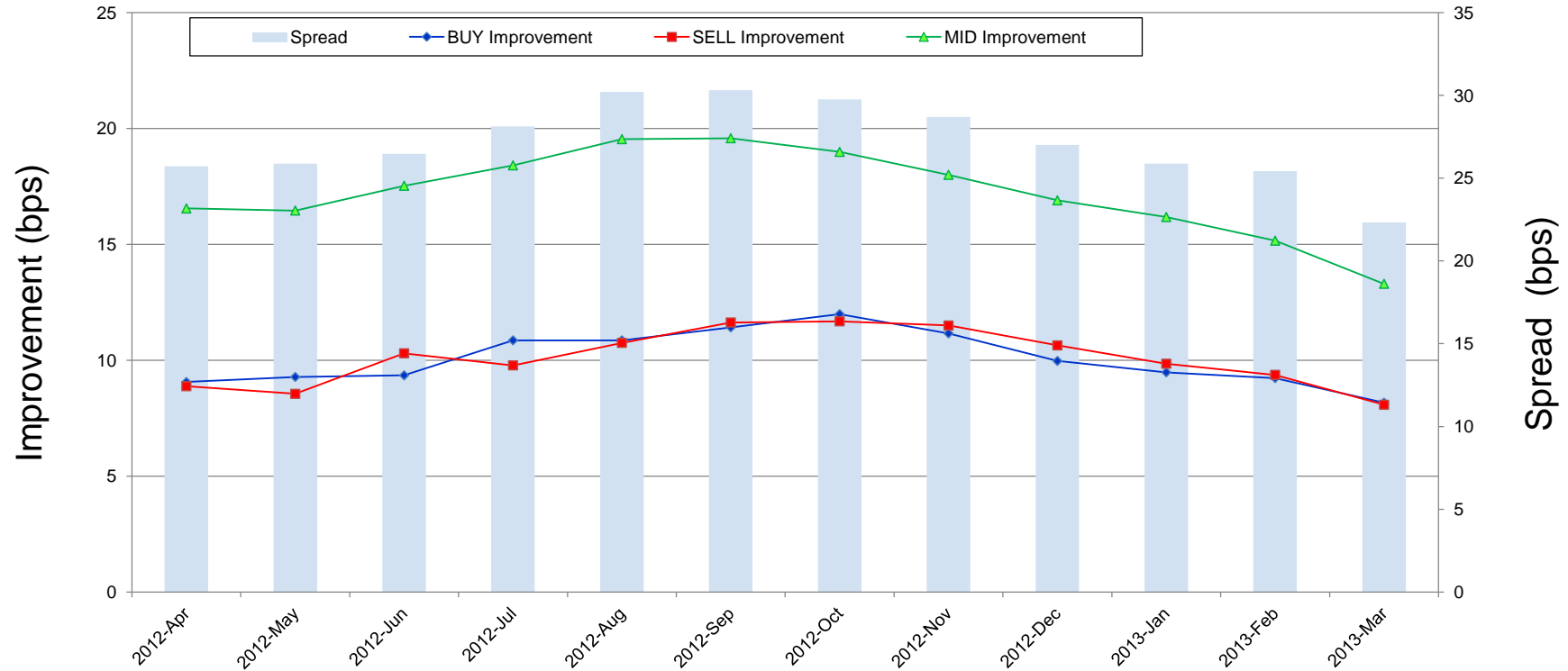
Note1: Excluded the executions from: before 9AM, lunch break, and after 3PM

Note2: Price improvement is calculated by comparing the execution price against the primary market's best bid for each sell or best offer for each buy at the point of execution and is calculated from the perspective of the Taker side of the trade

Note3: The chart% is based on number of trades executed

Improvement of Execution

Nikkei 225 universe in March-2013



Note1: Excluded the executions from: before 9AM, lunch break, and after 3PM

Note2: Price improvement is calculated by comparing the execution price against the primary market's best bid for each sell or best offer for each buy at the point of execution and is calculated from the perspective of the Taker side of the trade

Turnover Top 50 Names in Daytime Session

Ranking for March-2013

Rank	Symbol	Description	Turnover (Million USD)	Market Share vs PrimaryEX(%)
1	7203	TOYOTA	621.94	5.74
2	8411	MIZUHO	610.87	5.25
3	8306	MUFG	536.09	4.50
4	8316	SMFG	387.68	4.20
5	7267	HONDA	305.88	6.06
6	7751	CANON	270.27	5.38
7	9984	SOFTBNK	259.94	2.91
8	6758	SONY	247.85	2.06
9	9432	NTT	234.31	8.70
10	8604	NOMRAHD	233.31	2.72
11	4502	TAKEDAP	226.89	6.78
12	6501	HITACHI	212.60	6.10
13	7261	MAZDA	211.48	3.40
14	7201	NISSAN	202.39	6.36
15	8830	SMIRE&D	190.66	6.17
16	6502	TOSHIBA	181.93	4.59
17	2914	JT	181.74	2.60
18	8309	SMTRUST	181.35	5.51
19	6752	PANASNIC	166.99	4.57
20	9983	FASTRET	165.27	2.59
21	6954	FANUC	164.37	3.64
22	9433	KDDI	156.20	6.42
23	4063	SINETUC	153.71	5.42
24	8801	MTI-FU	150.69	3.46
25	9020	JR EAST	150.49	5.93

*1USD=94.85JPY

Rank	Symbol	Description	Turnover (Million USD)	Market Share vs PrimaryEX(%)
26	8802	MTB-EST	145.93	2.66
27	5401	NSTEELSM	132.61	5.59
28	4503	ASTELLAS	132.54	6.21
29	8031	mitsui	132.46	4.12
30	6902	DENSO	123.04	5.93
31	8001	ITOCHU	117.23	5.62
32	8058	MITBISI	115.29	3.34
33	6326	KUBOTA	113.20	6.23
34	5108	BRIDSTN	112.31	4.14
35	8303	SHINSEI	111.83	7.14
36	8601	DAIWASG	106.08	3.59
37	7011	MHI	105.75	5.20
38	8308	RESONA	100.29	3.18
39	8002	MARBENI	100.15	4.73
40	9107	K-LINE	99.12	3.94
41	6701	NEC	97.09	6.37
42	9104	MTI-OSK	93.93	5.80
43	1878	DAIT-TC	92.89	7.77
44	6988	NTTODEN	89.88	6.09
45	7270	FUJIHVY	87.84	4.09
46	5020	JX	85.25	6.68
47	9022	JR CENT	84.25	7.71
48	4523	EISAI	84.06	6.70
49	8591	ORIX	82.86	3.08
50	8804	TKOTATE	79.78	3.23

Improvement of Monthly Turnover for Top 25 Names

Ranking for March-2013

Rank	Symbol	Name	Sell Executions							Improve Avg bps	Buy Executions							Improve Avg bps
			Worse(A)		Equal(B)		Better (C)		(B)+(C)		Worse(A)		Equal(B)		Better (C)		(B)+(C)	
1	7203	TOYOTA	528	1.93%	2,445	8.95%	24,356	89.12%	98.07%	4.06	572	2.18%	2,682	10.23%	22,959	87.59%	98.07%	4.21
2	8411	MIZUHO	166	0.40%	3,330	7.93%	38,507	91.68%	99.60%	16.51	198	0.44%	2,514	5.55%	42,602	94.02%	99.60%	20.29
3	8306	MUFG	931	2.08%	5,363	11.97%	38,516	85.95%	97.92%	5.55	941	2.16%	4,693	10.78%	37,885	87.05%	97.92%	6.33
4	8316	SMFG	703	3.43%	3,205	15.65%	16,565	80.91%	96.57%	3.46	678	3.27%	2,945	14.22%	17,080	82.50%	96.57%	4.35
5	7267	HONDA	447	2.44%	2,139	11.67%	15,748	85.90%	97.56%	3.70	558	3.08%	2,218	12.24%	15,338	84.67%	97.56%	4.07
6	7751	CANON	302	2.06%	1,705	11.63%	12,652	86.31%	97.94%	4.07	354	2.37%	1,742	11.64%	12,868	85.99%	97.94%	4.38
7	9984	SOFTBNK	920	4.94%	3,367	18.09%	14,330	76.97%	95.06%	3.93	1,148	6.22%	3,452	18.71%	13,849	75.07%	95.06%	4.90
8	6758	SONY	1,274	3.28%	7,562	19.47%	29,999	77.25%	96.72%	1.85	1,411	3.80%	6,241	16.81%	29,465	79.38%	96.72%	2.36
9	9432	NTT	653	3.97%	1,579	9.59%	14,236	86.45%	96.03%	4.26	771	4.45%	2,105	12.16%	14,432	83.38%	96.03%	3.99
10	8604	NOMRAHD	444	2.19%	2,176	10.74%	17,642	87.07%	97.81%	4.22	442	2.11%	2,289	10.92%	18,235	86.97%	97.81%	4.91
11	4502	TAKEDAP	257	1.89%	937	6.90%	12,379	91.20%	98.11%	6.06	264	1.89%	1,033	7.41%	12,646	90.70%	98.11%	6.59
12	6501	HITACHI	275	2.00%	1,318	9.57%	12,186	88.44%	98.00%	6.56	291	2.20%	1,390	10.49%	11,574	87.32%	98.00%	6.58
13	7261	MAZDA	372	1.92%	1,804	9.30%	17,220	88.78%	98.08%	12.68	414	2.15%	1,922	10.00%	16,891	87.85%	98.08%	13.40
14	7201	NISSAN	726	2.27%	3,910	12.22%	27,362	85.51%	97.73%	3.28	981	2.88%	4,248	12.45%	28,882	84.67%	97.73%	3.51
15	8830	SMIRE&D	166	6.71%	397	16.04%	1,912	77.25%	93.29%	4.57	181	6.99%	351	13.56%	2,056	79.44%	93.29%	5.10
16	6502	TOSHIBA	366	2.58%	1,226	8.64%	12,598	88.78%	97.42%	7.46	311	2.32%	1,133	8.47%	11,936	89.21%	97.42%	7.91
17	2914	JT	295	2.98%	1,123	11.35%	8,475	85.67%	97.02%	3.92	340	3.01%	1,608	14.24%	9,344	82.75%	97.02%	4.45
18	8309	SMTRUST	638	4.60%	1,760	12.70%	11,460	82.70%	95.40%	7.58	598	4.07%	2,070	14.07%	12,042	81.86%	95.40%	8.77
19	6752	PANASNIC	1,024	3.75%	3,398	12.45%	22,862	83.79%	96.25%	4.88	911	3.13%	3,115	10.69%	25,106	86.18%	96.25%	5.61
20	9983	FASTRET	136	5.43%	197	7.86%	2,172	86.71%	94.57%	4.22	166	8.69%	166	8.69%	1,578	82.62%	94.57%	3.12
21	6954	FANUC	497	11.64%	768	17.99%	3,003	70.36%	88.36%	1.91	455	11.12%	653	15.97%	2,982	72.91%	88.36%	2.57
22	9433	KDDI	348	3.96%	924	10.53%	7,507	85.51%	96.04%	4.71	362	4.08%	970	10.93%	7,540	84.99%	96.04%	5.34
23	4063	SINETUC	233	3.16%	808	10.96%	6,334	85.88%	96.84%	4.81	362	4.82%	969	12.89%	6,187	82.30%	96.84%	5.39
24	8801	MTI-FU	174	6.33%	417	15.16%	2,159	78.51%	93.67%	1.73	209	7.76%	368	13.67%	2,116	78.57%	93.67%	2.21
25	9020	JR EAST	382	5.25%	955	13.11%	5,946	81.64%	94.75%	4.37	433	5.99%	1,124	15.54%	5,674	78.47%	94.75%	4.37

Note1: Excluded the executions from: before 9AM, lunch break, and after 3PM

Note2: Price improvement is calculated by comparing the execution price against the primary market's best bid for each sell or best offer for each buy at the point of execution and is calculated from the perspective of the Taker side of the trade