

Japannext PTS Monthly Statistics

May 2013

Registration as a Financial Instrument Business Operator under the Financial Instruments and Exchange Act (FIEA) (including authorization to operate a Proprietary Trading System (PTS)),
Director of Kanto Local Finance Bureau (Kinsho) No.45

TEL: +81-3-4577-4040 FAX:+81-3-3261-1702

WEB Japanese: <http://www.japannext.co.jp/ja>

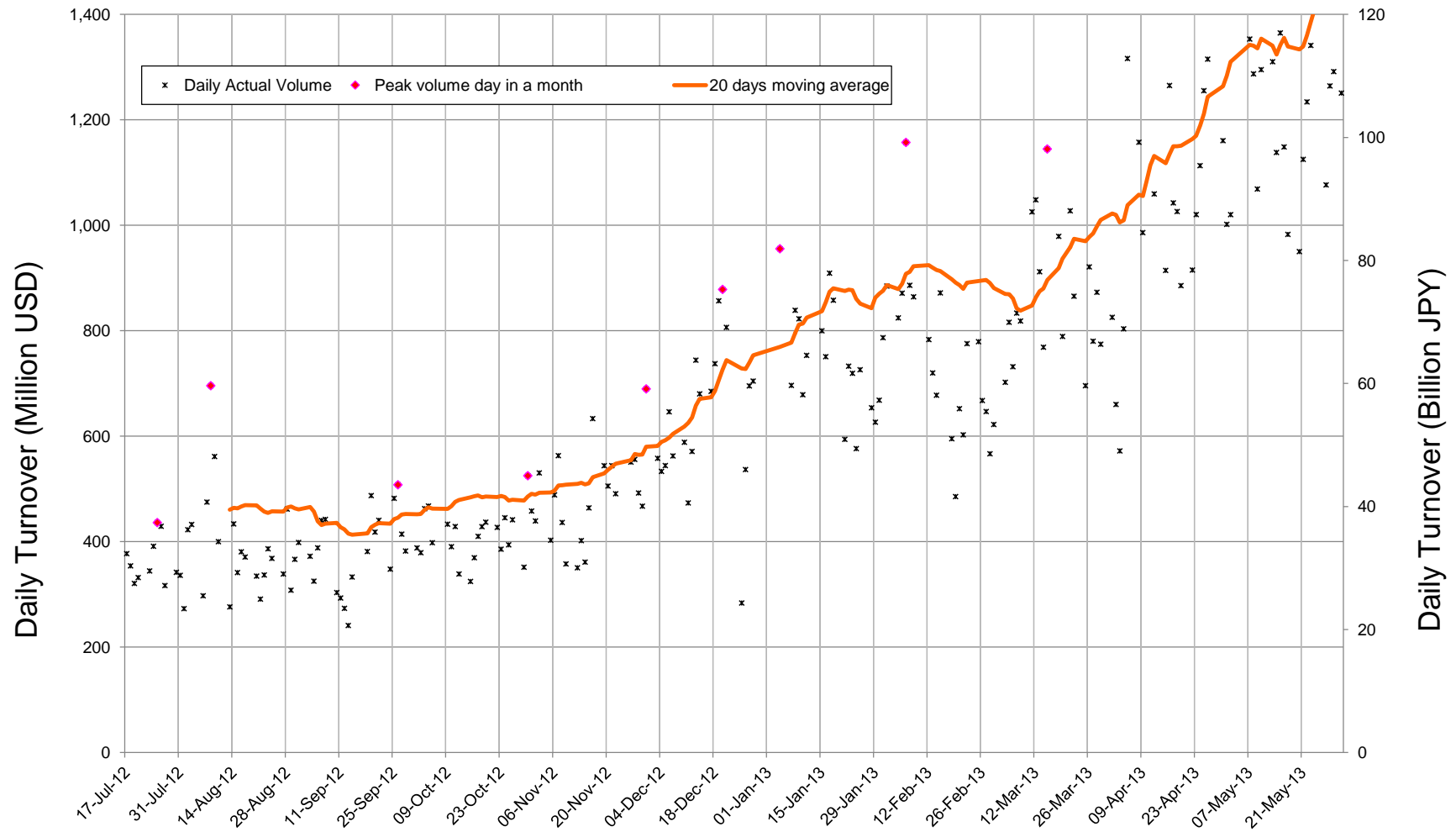
MAIL: ptsbiz@japannext.co.jp

English: <http://www.japannext.co.jp/en>

Disclaimer

Information provided is for reference purposes only and does not constitute financial product advice nor is constituted as an offer to sell or solicitation to buy any security. The ownership and intellectual property rights of this information are solely and exclusively belong to SBI Japannext Co.,Ltd.("SBIJ") . According users are permitted to access and use the Information for their own personal, non-commercial and internal-use-only. Although SBIJ has made every effort to ensure the accuracy of the information as at the date of publication, SBIJ does not give any warranty as to the accuracy, reliability or completeness of the information. To the extent permitted by law, SBIJ and its employees, officers and contractors shall not be liable for any loss or damage arising in any way (including by way of negligence) from or in connection with any information provided or omitted or from anyone acting or refraining to act in reliance on this information.

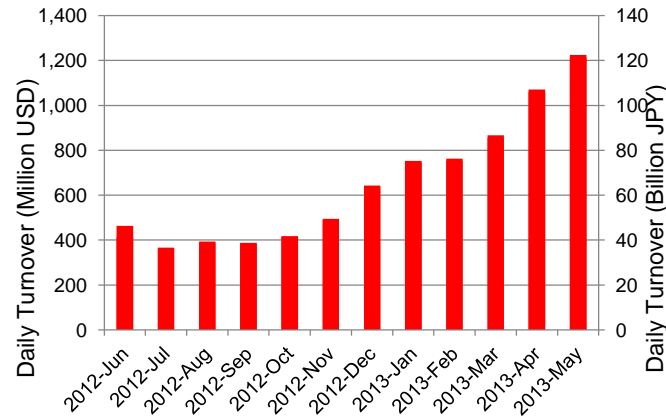
Daily Turnover of Daytime Session



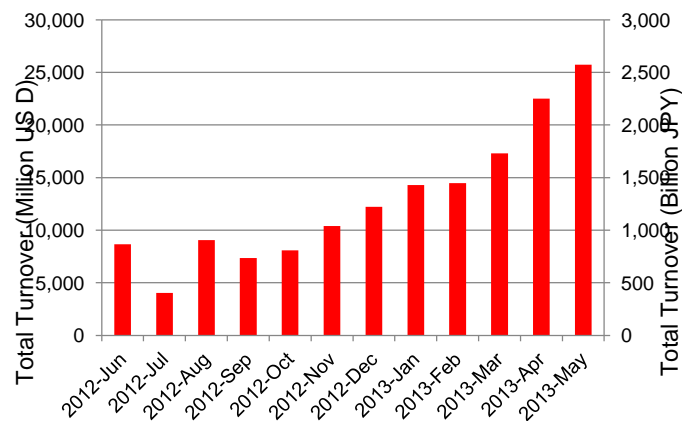
*1USD=101.1JPY

Summary of Daytime Session by Month

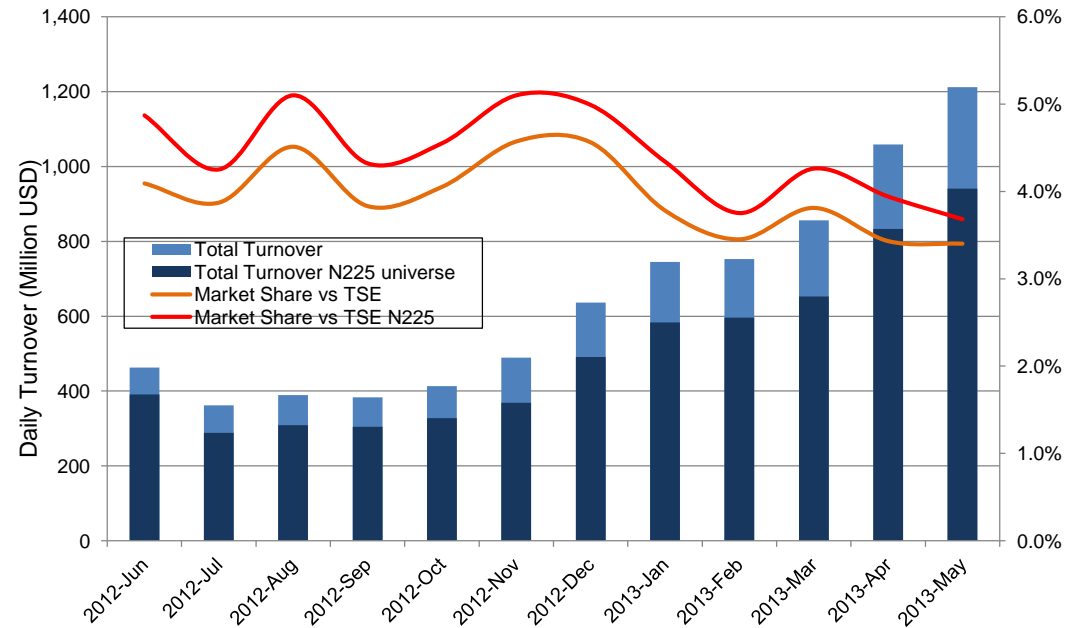
Average Daily Turnover by Month



Total Turnover by Month



Market Share vs TSE Turnover

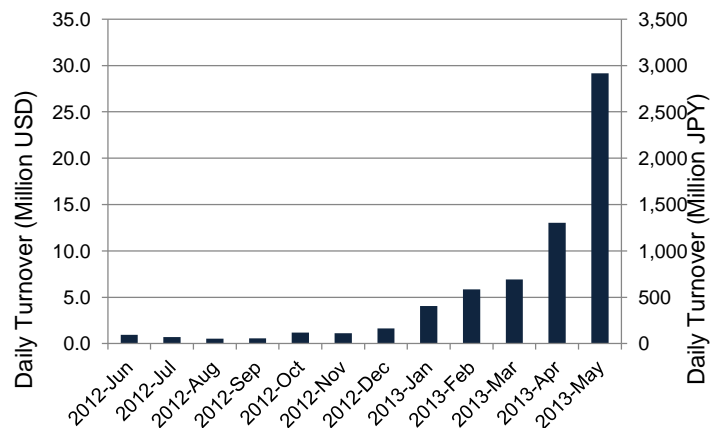


	12-Jul	12-Aug	12-Sep	12-Oct	12-Nov	12-Dec	13-Jan	13-Feb	13-Mar	13-Apr	13-May	
Value	362	389	383	413	489	636	745	753	856	1,059	1,212	(MM USD)
(N225)	288	309	305	328	369	491	583	596	653	833	941	(MM USD)
Share	3.87%	4.51%	3.83%	4.05%	4.57%	4.56%	3.78%	3.45%	3.81%	3.43%	3.40%	
(N225)	4.25%	5.10%	4.32%	4.55%	5.10%	4.99%	4.34%	3.75%	4.26%	3.94%	3.68%	
Improve	10.32	10.81	11.53	11.84	11.33	10.31	9.67	9.30	8.13	7.80	7.18	(N225 BPS)
TSE Spread	28.13	30.21	30.32	29.76	28.70	27.01	25.88	25.43	22.32	21.97	21.28	(N225 BPS)

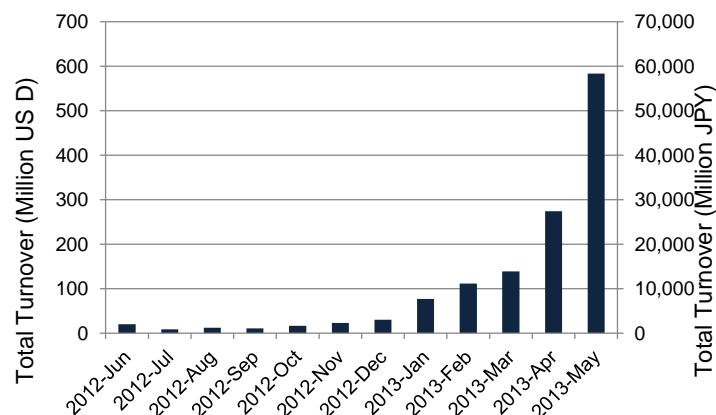
*1USD=101.1JPY

Summary of Nighttime Session by Month

Average Daily Turnover by Month



Total Turnover by Month



Turnover Top 30 Names in Nighttime Session of Month

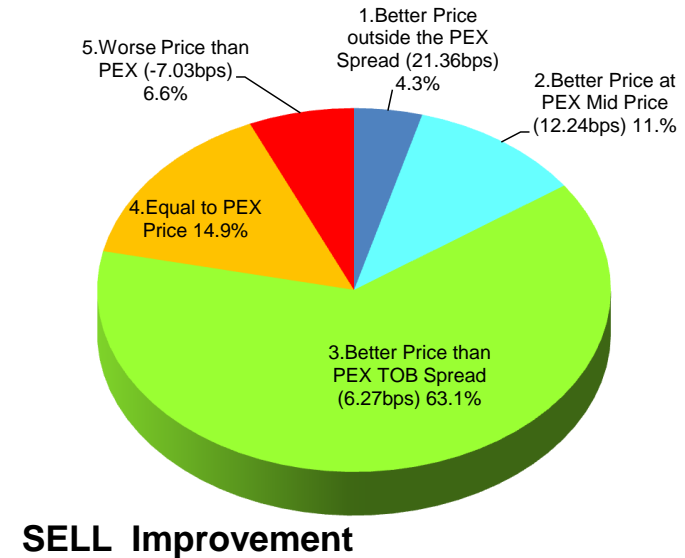
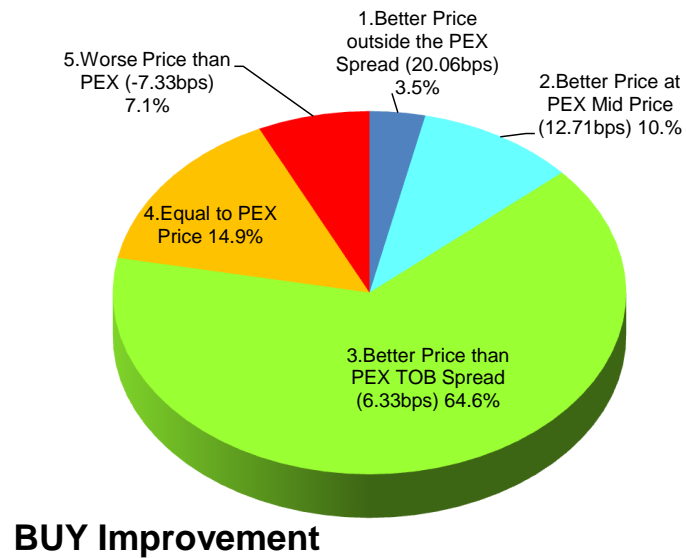
Rank	Symbol	Description	Turnover (USD)	Market Share vs PrimaryEX(%)
1	3765	GUNGHO	102,949,631	0.69
2	3668	COLOPL	35,398,692	1.04
3	7203	TOYOTA	32,282,958	0.14
4	8411	MIZUHO	23,060,482	0.15
5	9501	TEPCO	17,207,418	0.04
6	2931	EUGLENA	16,819,375	0.36
7	8306	MUFG	13,968,175	0.08
8	4974	TAKARBIO	13,271,322	0.27
9	3672	ALTPLUS	13,139,527	1.07
10	6758	SONY	13,132,637	0.10
11	8604	NOMRAHD	10,432,468	0.05
12	2138	CROOZ	9,730,421	0.55
13	3674	AUCFAN	9,490,110	0.50
14	7211	MMC	9,159,429	0.10
15	3667	ENISH	8,986,556	1.10
16	2370	MEDINET	8,551,319	0.43
17	8086	NIPRO	8,228,456	0.26
18	8316	SMFG	7,845,733	0.06
19	4576	DWTI	6,198,061	0.70
20	7261	MAZDA	6,164,813	0.05
21	2160	GNI	5,720,498	0.87
22	6753	SHARP	5,251,325	0.05
23	4583	CHIOME	4,833,469	0.50
24	3715	DWANGO	4,694,999	0.10
25	4321	KENEDIX	4,694,337	0.06
26	7261	MAZDA	6,164,813	0.05
27	2160	GNI	5,720,498	0.87
28	6753	SHARP	5,251,325	0.05
29	4583	CHIOME	4,833,469	0.50
30	3715	DWANGO	4,694,999	0.10

*1USD=101.1JPY

Daytime Session Execution

Nikkei 225 universe in May-2013

PEX : Primary Exchange



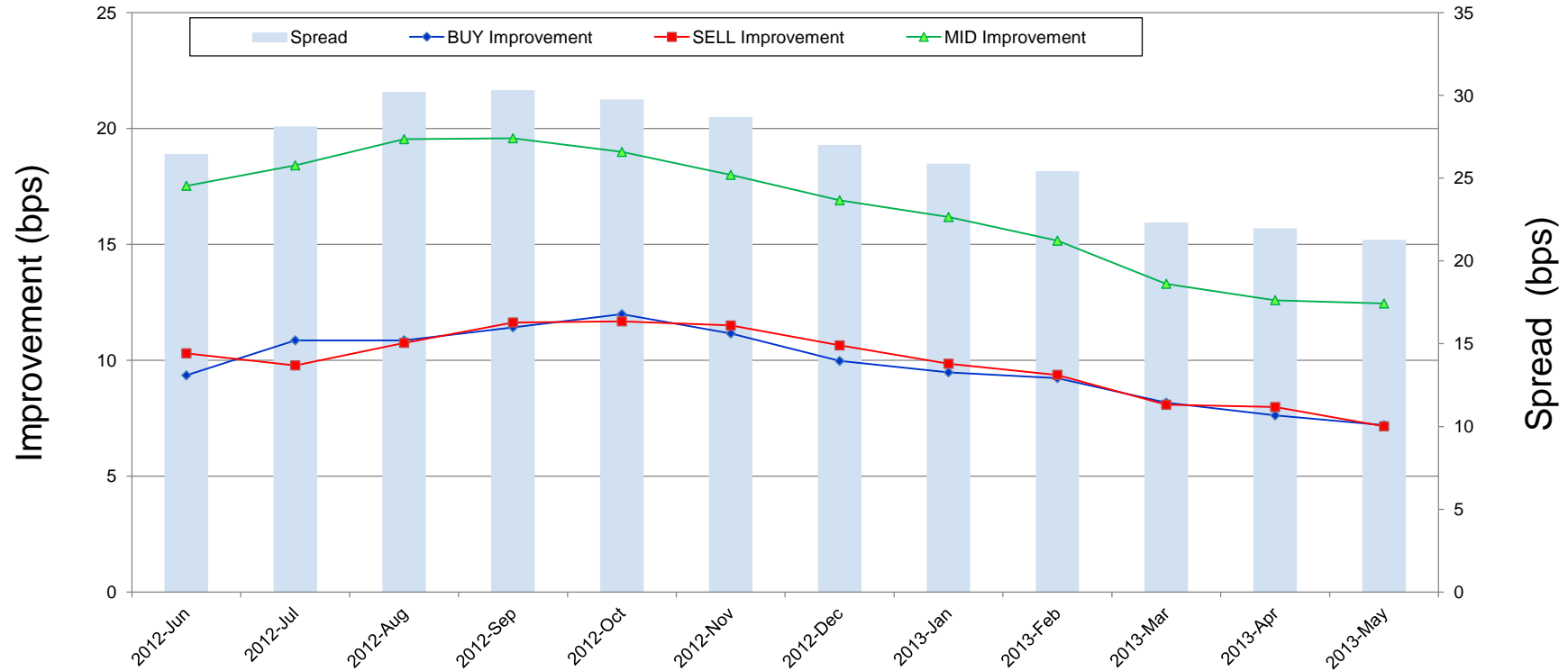
Note1: Excluded the executions from: before 9AM, lunch break, and after 3PM

Note2: Price improvement is calculated by comparing the execution price against the primary market's best bid for each sell or best offer for each buy at the point of execution and is calculated from the perspective of the Taker side of the trade

Note3: The chart% is based on number of trades executed

Improvement of Execution

Nikkei 225 universe in May-2013



Note1: Excluded the executions from: before 9AM, lunch break, and after 3PM

Note2: Price improvement is calculated by comparing the execution price against the primary market's best bid for each sell or best offer for each buy at the point of execution and is calculated from the perspective of the Taker side of the trade

Turnover Top 50 Names in Daytime Session

Ranking for May-2013

Rank	Symbol	Description	Turnover (Million USD)	Market Share vs PrimaryEX(%)
1	7203	TOYOTA	1,140.95	4.80
2	8411	MIZUHO	956.34	6.09
3	8306	MUFG	660.99	3.80
4	8316	SMFG	516.02	3.95
5	9984	SOFTBNK	507.09	3.97
6	7267	HONDA	426.27	6.46
7	9983	FASTRET	416.18	5.82
8	6501	HITACHI	362.58	6.64
9	7751	CANON	345.60	5.19
10	7261	MAZDA	330.88	2.58
11	6502	TOSHIBA	319.39	4.47
12	8309	SMTRUST	319.37	6.54
13	8830	SMIRE&D	304.92	5.82
14	2914	JT	296.58	6.57
15	4502	TAKEDAP	265.69	5.55
16	7201	NISSAN	258.47	5.15
17	4503	ASTELLAS	245.37	8.92
18	9432	NTT	244.63	5.13
19	8801	MTI-FU	242.79	4.53
20	6758	SONY	241.33	1.75
21	8604	NOMRAHD	240.73	1.07
22	9501	TEPCO	236.96	0.58
23	8802	MTB-EST	235.70	3.61
24	5401	NSTEELSM	212.72	4.64
25	9433	KDDI	210.89	5.20

*1USD=101.1JPY

Rank	Symbol	Description	Turnover (Million USD)	Market Share vs PrimaryEX(%)
26	8601	DAIWASG	198.92	4.00
27	9020	JR EAST	194.53	6.85
28	7011	MHI	190.28	6.04
29	8031	MITSUMI	169.89	3.27
30	8058	MITBISI	167.99	2.71
31	6902	DENSO	158.49	6.18
32	4063	SINETUC	157.75	6.42
33	5108	BRIDSTN	157.39	4.51
34	6752	PANASNIC	155.70	3.25
35	9531	TKO-GAS	154.43	7.87
36	8308	RESONA	145.80	4.08
37	3382	7&I-HD	144.29	5.20
38	8002	MARBENI	140.59	4.15
39	7202	ISUZU	136.58	4.19
40	7752	RICOH	136.33	6.57
41	8001	ITOCHU	128.05	4.58
42	6701	NEC	125.54	5.72
43	6503	MELCO	124.70	4.58
44	6702	FUJITSU	124.69	7.26
45	1605	INPEX	122.63	4.85
46	6753	SHARP	121.13	1.05
47	9022	JR CENT	119.99	6.63
48	6954	FANUC	118.98	2.42
49	9104	MTI-OSK	116.30	4.14
50	1963	JGC	114.71	5.51

Improvement of Monthly Turnover for Top 25 Names

Ranking for May-2013

Rank	Symbol	Name	Sell Executions							Improve Avg bps	Buy Executions							Improve Avg bps
			Worse(A)		Equal(B)		Better (C)		(B)+(C)		Worse(A)		Equal(B)		Better (C)		(B)+(C)	
1	7203	TOYOTA	1,066	2.20%	3,456	7.12%	43,989	90.68%	97.80%	5.73	1,745	3.77%	3,793	8.19%	40,795	88.05%	97.80%	5.58
2	8411	MIZUHO	461	0.54%	5,616	6.62%	78,731	92.83%	99.46%	18.71	411	0.46%	5,682	6.42%	82,389	93.11%	99.46%	19.88
3	8306	MUFG	2,008	2.71%	9,130	12.34%	62,861	84.95%	97.29%	4.39	2,189	3.05%	8,499	11.84%	61,068	85.11%	97.29%	5.05
4	8316	SMFG	2,230	6.72%	5,236	15.79%	25,702	77.49%	93.28%	2.79	2,944	8.87%	4,864	14.66%	25,378	76.47%	93.28%	3.34
5	9984	SOFTBNK	1,651	5.74%	4,212	14.65%	22,882	79.60%	94.26%	4.71	1,582	5.53%	3,796	13.28%	23,209	81.19%	94.26%	5.73
6	7267	HONDA	1,351	4.98%	3,660	13.48%	22,139	81.54%	95.02%	3.28	1,948	6.89%	3,469	12.27%	22,844	80.83%	95.02%	3.99
7	9983	FASTRET	632	12.54%	889	17.64%	3,518	69.82%	87.46%	3.14	784	13.93%	987	17.54%	3,856	68.53%	87.46%	4.14
8	6501	HITACHI	1,169	5.79%	2,829	14.02%	16,184	80.19%	94.21%	4.48	1,623	7.87%	2,872	13.93%	16,116	78.19%	94.21%	5.17
9	7751	CANON	1,025	4.14%	2,553	10.31%	21,174	85.54%	95.86%	4.12	1,600	6.41%	2,921	11.71%	20,434	81.88%	95.86%	4.57
10	7261	MAZDA	1,083	3.91%	3,150	11.36%	23,485	84.73%	96.09%	9.00	967	3.61%	3,007	11.23%	22,812	85.16%	96.09%	9.98
11	6502	TOSHIBA	891	4.18%	2,960	13.89%	17,453	81.92%	95.82%	5.88	790	3.57%	2,897	13.08%	18,455	83.35%	95.82%	7.05
12	8309	SMTRUST	1,071	4.85%	4,582	20.74%	16,441	74.41%	95.15%	5.61	1,175	5.26%	4,349	19.48%	16,796	75.25%	95.15%	7.44
13	8830	SMIRE&D	400	12.11%	461	13.95%	2,443	73.94%	87.89%	3.28	630	17.95%	472	13.45%	2,408	68.60%	87.89%	3.80
14	2914	JT	1,323	6.55%	2,263	11.20%	16,619	82.25%	93.45%	3.72	1,589	7.51%	3,432	16.22%	16,133	76.26%	93.45%	4.13
15	4502	TAKEDAP	913	5.23%	1,981	11.34%	14,572	83.43%	94.77%	4.20	1,070	5.94%	2,067	11.48%	14,872	82.58%	94.77%	4.72
16	7201	NISSAN	2,517	6.36%	6,512	16.45%	30,563	77.19%	93.64%	2.61	3,362	8.55%	7,683	19.53%	28,286	71.92%	93.64%	2.99
17	4503	ASTELLAS	1,057	6.69%	1,805	11.42%	12,938	81.89%	93.31%	5.35	1,030	6.98%	1,646	11.15%	12,083	81.87%	93.31%	6.61
18	9432	NTT	999	6.04%	2,178	13.18%	13,350	80.78%	93.96%	4.77	1,143	6.82%	2,370	14.15%	13,237	79.03%	93.96%	5.97
19	8801	MTI-FU	353	9.58%	548	14.87%	2,785	75.56%	90.42%	3.50	526	14.10%	509	13.64%	2,696	72.26%	90.42%	4.36
20	6758	SONY	1,925	6.34%	6,326	20.84%	22,106	72.82%	93.66%	1.51	2,019	6.31%	6,073	18.97%	23,915	74.72%	93.66%	2.19
21	8604	NOMRAHD	1,792	4.70%	6,011	15.76%	30,333	79.54%	95.30%	2.70	1,753	4.98%	5,932	16.86%	27,489	78.15%	95.30%	3.02
22	9501	TEPCO	2,714	6.18%	6,265	14.27%	34,909	79.54%	93.82%	5.05	2,009	4.40%	7,112	15.59%	36,503	80.01%	93.82%	5.71
23	8802	MTB-EST	280	7.24%	750	19.40%	2,835	73.35%	92.76%	2.47	381	9.19%	817	19.70%	2,950	71.12%	92.76%	3.98
24	5401	NSTEELSM	474	2.30%	1,997	9.69%	18,142	88.01%	97.70%	12.79	579	2.77%	2,139	10.22%	18,206	87.01%	97.70%	14.05
25	9433	KDDI	1,093	7.21%	2,203	14.54%	11,857	78.25%	92.79%	3.25	1,089	6.96%	2,007	12.83%	12,542	80.20%	92.79%	4.23

Note1: Excluded the executions from: before 9AM, lunch break, and after 3PM

Note2: Price improvement is calculated by comparing the execution price against the primary market's best bid for each sell or best offer for each buy at the point of execution and is calculated from the perspective of the Taker side of the trade