

Japannext PTS Monthly Statistics

August 2013

Registration as a Financial Instrument Business Operator under the Financial Instruments and Exchange Act (FIEA) (including authorization to operate a Proprietary Trading System (PTS)),
Director of Kanto Local Finance Bureau (Kinsho) No.45

TEL: +81-3-4577-4040 FAX:+81-3-3261-1702

MAIL: ptsbiz@japannext.co.jp

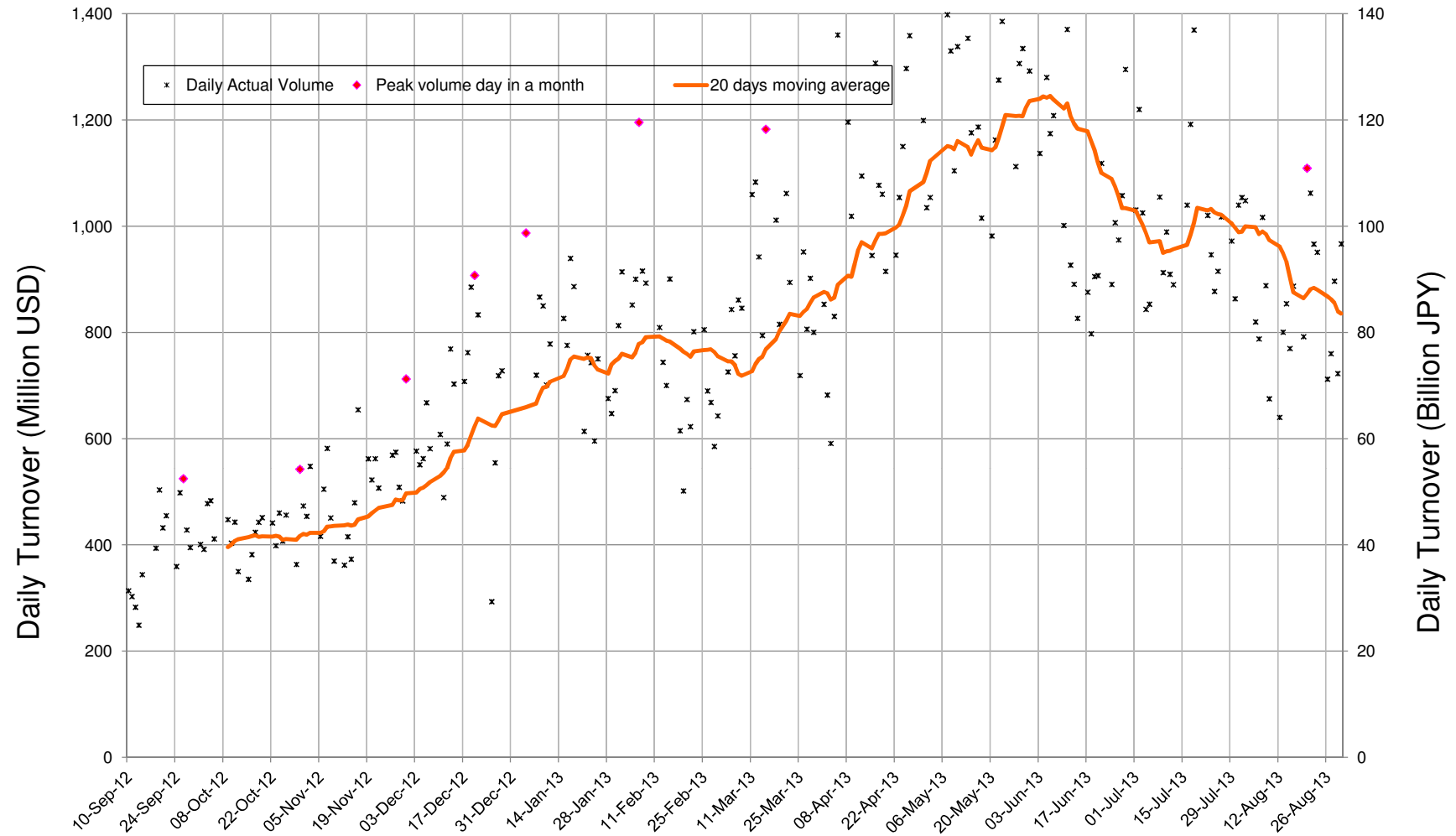
WEB Japanese: <http://www.japannext.co.jp/ja>

English: <http://www.japannext.co.jp/en>

Disclaimer

Information provided is for reference purposes only and does not constitute financial product advice nor is constituted as an offer to sell or solicitation to buy any security. The ownership and intellectual property rights of this information are solely and exclusively belong to SBI Japannext Co.,Ltd. ("SBIJ") . According users are permitted to access and use the Information for their own personal, non-commercial and internal-use-only. Although SBIJ has made every effort to ensure the accuracy of the information as at the date of publication, SBIJ does not give any warranty as to the accuracy, reliability or completeness of the information. To the extent permitted by law, SBIJ and its employees, officers and contractors shall not be liable for any loss or damage arising in any way (including by way of negligence) from or in connection with any information provided or omitted or from anyone acting or refraining to act in reliance on this information.

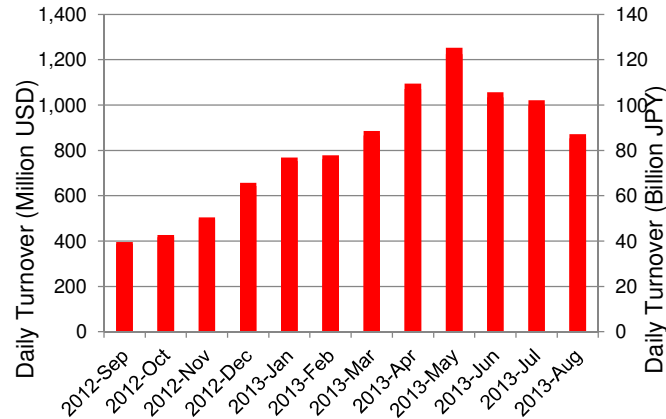
Daily Turnover of Daytime Session



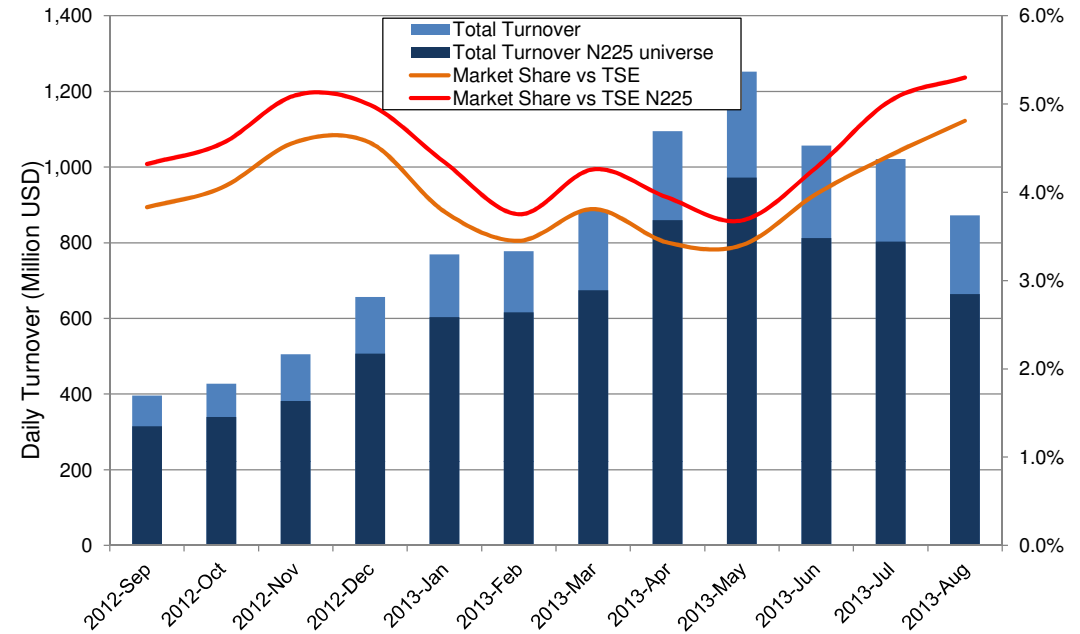
*1USD=97.84JPY

Summary of Daytime Session by Month

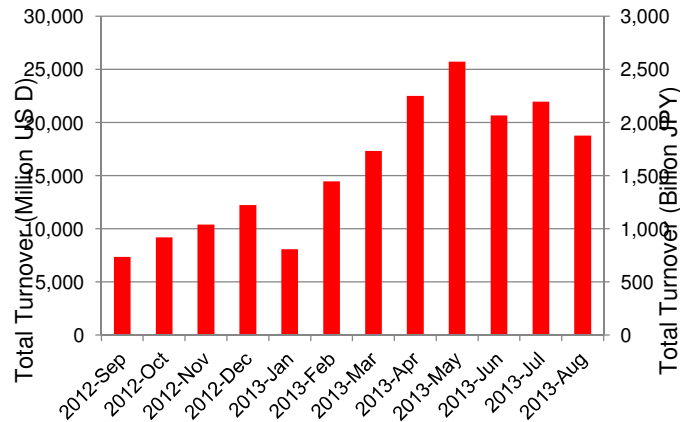
Average Daily Turnover by Month



Market Share vs TSE Turnover



Total Turnover by Month

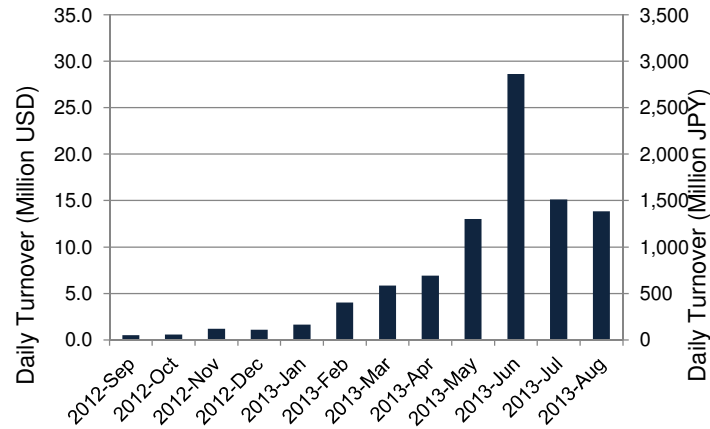


	12-Oct	12-Nov	12-Dec	13-Jan	13-Feb	13-Mar	13-Apr	13-May	13-Jun	13-Jul	13-Aug	
Value	427	505	657	769	778	885	1,095	1,252	1,057	1,021	872	(MM USD)
(N225)	339	382	507	603	616	674	860	972	812	803	664	(MM USD)
Share	4.05%	4.57%	4.56%	3.78%	3.45%	3.81%	3.43%	3.40%	3.98%	4.42%	4.81%	
(N225)	4.55%	5.10%	4.99%	4.34%	3.75%	4.26%	3.94%	3.68%	4.28%	5.04%	5.30%	
Improve	11.84	11.33	10.31	9.67	9.30	8.13	7.80	7.18	7.38	7.36	7.22	(N225 BPS)
TSE Spread	29.76	28.70	27.01	25.88	25.43	22.32	21.97	21.28	22.78	21.22	21.43	(N225 BPS)

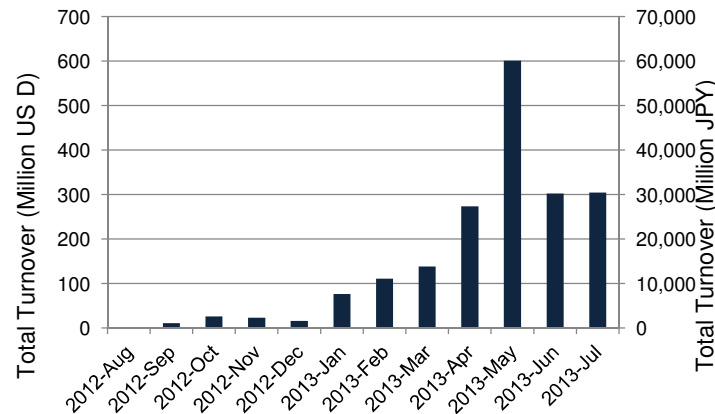
*1USD=97.84JPY

Summary of Nighttime Session by Month

Average Daily Turnover by Month



Total Turnover by Month



Turnover Top 30 Names in Nighttime Session of Month

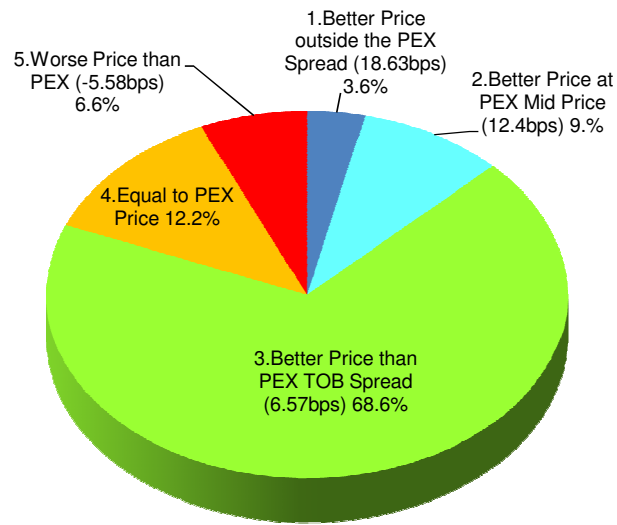
Rank	Symbol	Description	Turnover (USD)	Market Share vs PrimaryEX(%)
1	3765	GUNGO	18,740,234	0.25
2	7203	TOYOTA	15,142,975	0.11
3	3782	DDS	8,032,692	0.89
4	2497	UNITED	7,870,485	0.29
5	2489	ADWAYS	5,558,258	0.31
6	8411	MIZUHO	4,125,784	0.08
7	8508	JTRUST	3,922,095	0.30
8	3668	COLOPL	3,758,230	0.24
9	6633	C&GSYS	3,687,544	1.08
10	4563	ANGESM	3,391,159	0.92
11	3623	BILLINGS	3,189,200	1.49
12	9984	SOFTBNK	3,154,344	0.02
13	3672	ALTPLUS	3,109,776	1.09
14	3627	NEOS	2,918,948	0.38
15	6758	SONY	2,777,487	0.05
16	3656	KLAB	2,669,047	0.29
17	6340	SHIBUYA	2,567,492	0.35
18	9501	TEPCO	2,496,959	0.01
19	8306	MUFG	2,436,426	0.04
20	3799	KEYWARE	2,317,902	2.61
21	2438	ASUKANET	2,081,918	0.80
22	3622	NETYEAR	1,693,167	0.35
23	2138	CROOZ	1,589,477	0.17
24	2370	MEDINET	1,559,140	0.53
25	3632	GREE	1,439,640	0.06
26	3799	KEYWARE	2,317,902	2.61
27	2438	ASUKANET	2,081,918	0.80
28	3622	NETYEAR	1,693,167	0.35
29	2138	CROOZ	1,589,477	0.17
30	2370	MEDINET	1,559,140	0.53

*1USD=97.84JPY

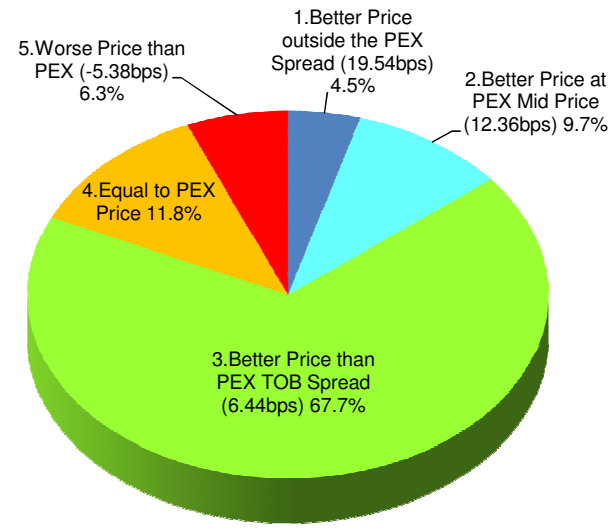
Daytime Session Execution

Nikkei 225 universe in August-2013

PEX : Primary Exchange



BUY Improvement



SELL Improvement

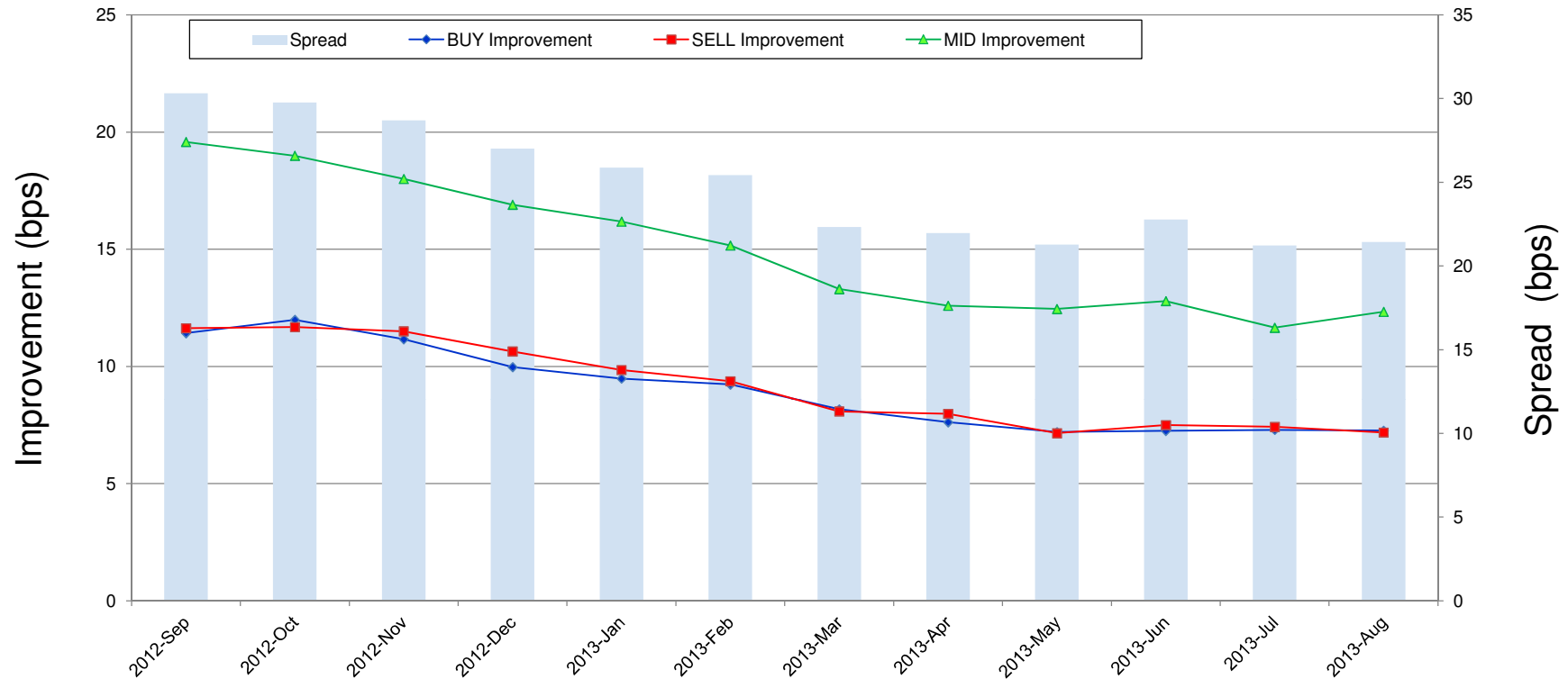
Note1: Excluded the executions from: before 9AM, lunch break, and after 3PM

Note2: Price improvement is calculated by comparing the execution price against the primary market's best bid for each sell or best offer for each buy at the point of execution and is calculated from the perspective of the Taker side of the trade

Note3: The chart% is based on number of trades executed

Improvement of Execution

Nikkei 225 universe in August-2013



Note1: Excluded the executions from: before 9AM, lunch break, and after 3PM

Note2: Price improvement is calculated by comparing the execution price against the primary market's best bid for each sell or best offer for each buy at the point of execution and is calculated from the perspective of the Taker side of the trade

Turnover Top 50 Names in Daytime Session

Ranking for August-2013

Rank	Symbol	Description	Turnover (Million USD)	Market Share vs PrimaryEX(%)
1	7203	TOYOTA	884.92	6.38
2	9984	SOFTBNK	685.16	5.09
3	8411	MIZUHO	545.65	10.97
4	8306	MUFG	433.57	7.00
5	7751	CANON	354.00	8.41
6	7267	HONDA	338.67	7.95
7	9983	FASTRET	321.56	6.99
8	7261	MAZDA	278.51	4.89
9	6501	HITACHI	248.98	8.82
10	8316	SMFG	247.21	4.51
11	8830	SMIRE&D	228.67	9.60
12	9501	TEPCO	225.33	1.17
13	6502	TOSHIBA	222.12	6.51
14	2914	JT	219.68	9.61
15	5401	NSTEELSM	185.86	7.99
16	8801	MTI-FU	184.17	7.43
17	9432	NTT	162.63	5.35
18	4503	ASTELLAS	161.20	9.64
19	9433	KDDI	145.48	4.27
20	8601	DAIWASG	145.24	6.19
21	4502	TAKEDAP	144.68	6.46
22	7201	NISSAN	144.25	5.39
23	7202	ISUZU	143.12	6.25
24	8309	SMTRUST	122.28	8.61
25	7270	FUJIHVV	119.72	2.08

*1USD=97.84JPY

Rank	Symbol	Description	Turnover (Million USD)	Market Share vs PrimaryEX(%)
26	4063	SINETUC	117.09	6.72
27	8308	RESONA	115.81	8.55
28	5108	BRIDSTN	112.10	5.53
29	8802	MTB-EST	111.87	3.99
30	6758	SONY	110.63	2.05
31	6971	KYOCERA	110.53	5.94
32	7011	MHI	109.45	6.25
33	5020	JX	109.18	8.59
34	6902	DENSO	108.41	5.65
35	8766	TOKIOMAR	105.25	7.86
36	7013	IHI	104.74	10.52
37	8031	mitsui	104.73	3.87
38	8113	UNICHAM	102.65	11.27
39	5233	PC CEMT	100.56	6.05
40	8002	MARBENI	98.10	5.90
41	3382	7&I-HD	97.74	6.96
42	6988	NTTODEN	97.38	7.02
43	9020	JR EAST	96.73	6.98
44	5713	SMI-MTM	96.13	5.06
45	6503	MELCO	95.18	6.22
46	8604	NOMRAHD	92.00	1.88
47	5406	KOBESTL	90.25	4.23
48	6861	KEYENCE	89.29	10.59
49	4005	SMICHEM	89.06	8.32
50	9104	MTI-OSK	87.88	5.87

Improvement of Monthly Turnover for Top 25 Names

Ranking for August-2013

Rank	Symbol	Name	Sell Executions							Improve Avg bps	Buy Executions							Improve Avg bps
			Worse(A)		Equal(B)		Better (C)		(B)+(C)		Worse(A)		Equal(B)		Better (C)		(B)+(C)	
1	7203	TOYOTA	760	2.58%	2,120	7.19%	26,605	90.23%	97.42%	5.67	786	2.63%	2,212	7.41%	26,856	89.96%	97.42%	6.09
2	9984	SOFTBNK	1,029	3.61%	3,260	11.43%	24,225	84.96%	96.39%	4.88	1,133	3.94%	3,108	10.81%	24,512	85.25%	96.39%	5.86
3	8411	MIZUHO	175	0.44%	1,570	3.94%	38,103	95.62%	99.56%	21.08	242	0.63%	1,977	5.15%	36,202	94.22%	99.56%	20.32
4	8306	MUFG	958	2.91%	3,240	9.83%	28,756	87.26%	97.09%	5.26	866	2.30%	3,691	9.81%	33,068	87.89%	97.09%	6.57
5	7751	CANON	743	3.11%	1,854	7.76%	21,286	89.13%	96.89%	4.82	1,011	4.53%	2,350	10.53%	18,961	84.94%	96.89%	4.72
6	7267	HONDA	932	4.13%	2,273	10.06%	19,385	85.81%	95.87%	4.15	1,182	5.07%	2,349	10.07%	19,788	84.86%	95.87%	5.00
7	9983	FASTRET	451	10.25%	562	12.78%	3,385	76.97%	89.75%	3.75	426	9.44%	552	12.23%	3,536	78.33%	89.75%	4.55
8	7261	MAZDA	627	3.91%	1,420	8.86%	13,985	87.23%	96.09%	8.40	543	3.32%	1,576	9.65%	14,212	87.02%	96.09%	9.13
9	6501	HITACHI	551	3.98%	1,428	10.33%	11,848	85.69%	96.02%	4.65	630	4.60%	1,450	10.59%	11,616	84.81%	96.02%	5.50
10	8316	SMFG	660	4.74%	1,745	12.54%	11,507	82.71%	95.26%	3.07	758	5.84%	1,710	13.18%	10,506	80.98%	95.26%	3.68
11	8830	SMIRE&D	174	6.53%	395	14.83%	2,094	78.63%	93.47%	4.09	206	8.02%	379	14.75%	1,985	77.24%	93.47%	4.73
12	9501	TEPCO	923	2.69%	3,180	9.27%	30,198	88.04%	97.31%	5.49	1,021	2.79%	3,142	8.59%	32,398	88.61%	97.31%	5.82
13	6502	TOSHIBA	315	2.28%	1,541	11.17%	11,936	86.54%	97.72%	7.56	347	2.19%	1,486	9.40%	13,980	88.41%	97.72%	9.23
14	2914	JT	669	3.85%	1,427	8.21%	15,292	87.95%	96.15%	4.68	902	4.73%	1,754	9.20%	16,417	86.07%	96.15%	5.30
15	5401	NSTEELSM	263	1.88%	990	7.08%	12,736	91.04%	98.12%	11.74	281	1.92%	951	6.50%	13,394	91.58%	98.12%	14.19
16	8801	MTI-FU	236	8.21%	435	15.14%	2,202	76.64%	91.79%	3.46	263	9.31%	472	16.71%	2,089	73.97%	91.79%	4.77
17	9432	NTT	592	6.64%	1,134	12.72%	7,187	80.64%	93.36%	4.59	531	5.68%	1,181	12.64%	7,632	81.68%	93.36%	6.50
18	4503	ASTELLAS	474	4.47%	1,220	11.51%	8,902	84.01%	95.53%	5.47	823	7.82%	1,060	10.08%	8,637	82.10%	95.53%	6.77
19	9433	KDDI	819	9.97%	1,185	14.43%	6,209	75.60%	90.03%	3.83	821	10.31%	978	12.28%	6,166	77.41%	90.03%	4.78
20	8601	DAIWASG	481	6.70%	1,184	16.49%	5,514	76.81%	93.30%	3.46	541	7.66%	1,087	15.39%	5,437	76.96%	93.30%	4.43
21	4502	TAKEDAP	724	8.09%	1,064	11.89%	7,164	80.03%	91.91%	3.33	714	7.70%	953	10.28%	7,604	82.02%	91.91%	4.03
22	7201	NISSAN	1,040	5.53%	3,864	20.53%	13,918	73.95%	94.47%	2.76	1,266	6.29%	4,034	20.05%	14,823	73.66%	94.47%	3.46
23	7202	ISUZU	696	8.14%	1,194	13.97%	6,658	77.89%	91.86%	3.47	770	8.38%	1,253	13.63%	7,167	77.99%	91.86%	4.91
24	8309	SMTRUST	425	4.71%	1,040	11.51%	7,567	83.78%	95.29%	6.64	393	4.32%	1,038	11.40%	7,671	84.28%	95.29%	7.89
25	7270	FUJIHVVY	260	11.32%	117	5.09%	1,920	83.59%	88.68%	1.63	301	12.63%	165	6.92%	1,917	80.44%	88.68%	1.91

Note1: Excluded the executions from: before 9AM, lunch break, and after 3PM

Note2: Price improvement is calculated by comparing the execution price against the primary market's best bid for each sell or best offer for each buy at the point of execution and is calculated from the perspective of the Taker side of the trade