

Japannext PTS Monthly Statistics

October 2013

Registration as a Financial Instrument Business Operator under the Financial Instruments and Exchange Act (FIEA) (including authorization to operate a Proprietary Trading System (PTS)),
Director of Kanto Local Finance Bureau (Kinsho) No.45

TEL: +81-3-4577-4040 FAX:+81-3-3261-1702

MAIL: ptsbiz@japannext.co.jp

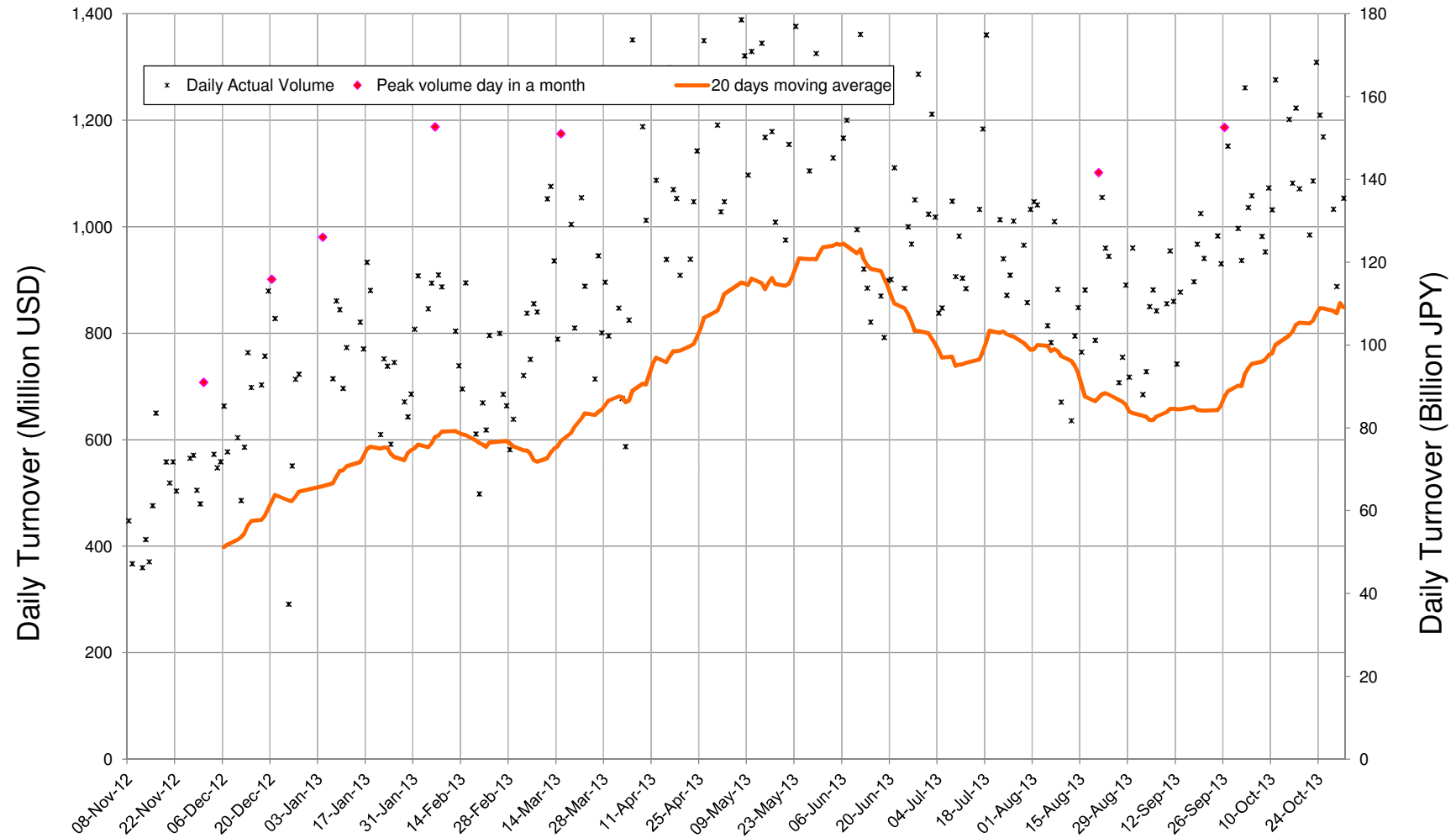
WEB Japanese: <http://www.japannext.co.jp/ja>

English: <http://www.japannext.co.jp/en>

Disclaimer

Information provided is for reference purposes only and does not constitute financial product advice nor is constituted as an offer to sell or solicitation to buy any security. The ownership and intellectual property rights of this information are solely and exclusively belong to SBI Japannext Co.,Ltd.("SBIJ") . According users are permitted to access and use the Information for their own personal, non-commercial and internal-use-only. Although SBIJ has made every effort to ensure the accuracy of the information as at the date of publication, SBIJ does not give any warranty as to the accuracy, reliability or completeness of the information. To the extent permitted by law, SBIJ and its employees, officers and contractors shall not be liable for any loss or damage arising in any way (including by way of negligence) from or in connection with any information provided or omitted or from anyone acting or refraining to act in reliance on this information.

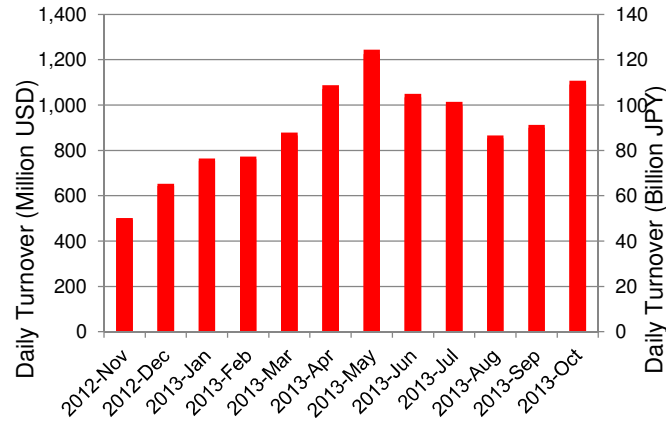
Daily Turnover of Daytime Session



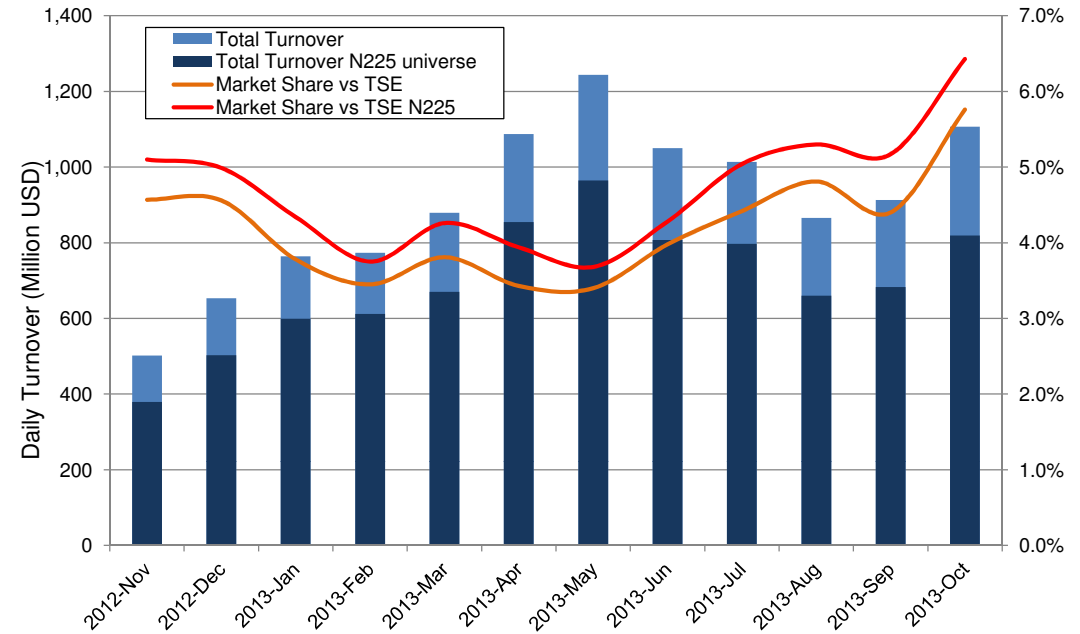
*1USD=98.5JPY

Summary of Daytime Session by Month

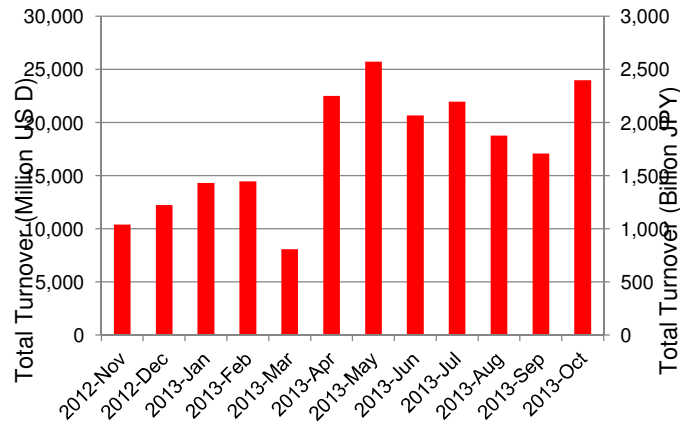
Average Daily Turnover by Month



Market Share vs TSE Turnover



Total Turnover by Month

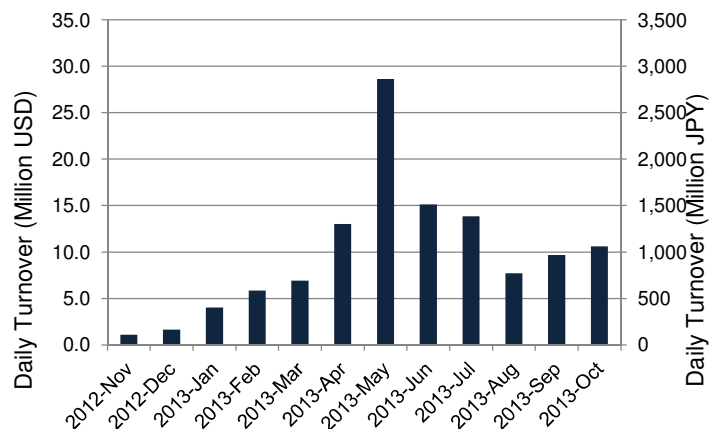


	12-Dec	13-Jan	13-Feb	13-Mar	13-Apr	13-May	13-Jun	13-Jul	13-Aug	13-Sep	13-Oct	
Value	653	764	773	879	1,087	1,244	1,050	1,014	866	913	1,107	(MM USD)
(N225)	503	599	612	670	855	965	807	797	660	683	819	(MM USD)
Share	4.56%	3.78%	3.45%	3.81%	3.43%	3.40%	3.98%	4.42%	4.81%	4.40%	5.76%	
(N225)	4.99%	4.34%	3.75%	4.26%	3.94%	3.68%	4.28%	5.04%	5.30%	5.17%	6.43%	
Improve	11.30	10.27	9.65	9.28	8.12	7.80	7.17	7.37	7.35	7.21	7.23	(N225 BPS)
TSE Spread	28.63	26.92	25.83	25.39	22.30	21.96	21.25	22.75	21.20	21.41	20.31	(N225 BPS)

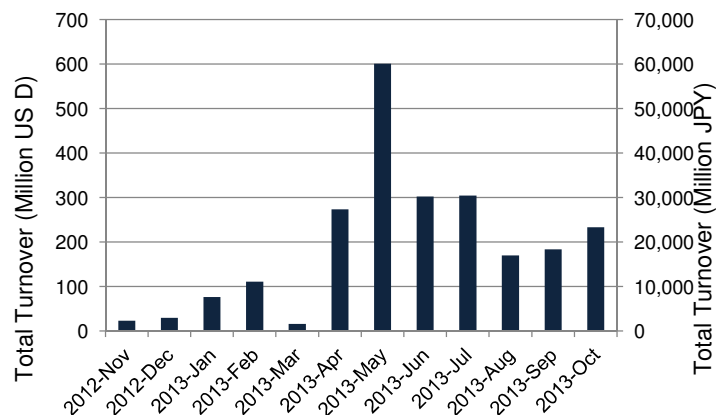
*1USD=98.5JPY

Summary of Nighttime Session by Month

Average Daily Turnover by Month



Total Turnover by Month



Turnover Top 30 Names in Nighttime Session of Month

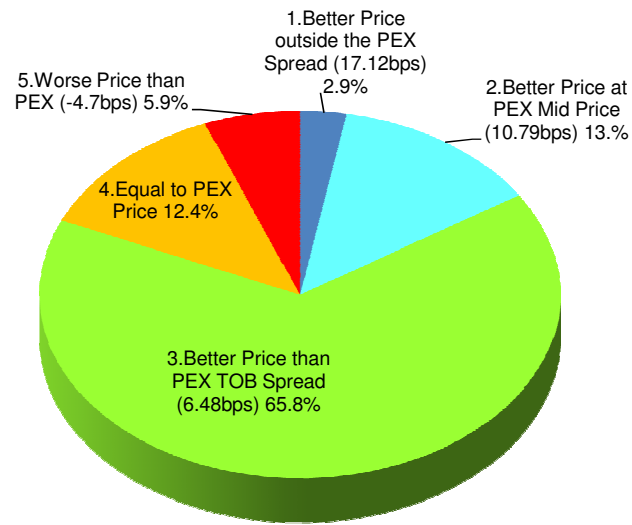
Rank	Symbol	Description	Turnover (USD)	Market Share vs PrimaryEX(%)
1	3668	COLOPL	23,816,415	0.31
2	3765	GUNGHO	19,889,037	0.39
3	2489	ADWAYS	16,976,976	0.26
4	6079	ENERES	16,709,377	0.29
5	9984	SOFTBNK	6,142,791	0.03
6	7203	TOYOTA	5,720,600	0.05
7	6758	SONY	5,208,216	0.10
8	3677	SYSTEMIN	4,917,540	1.76
9	8411	MIZUHO	4,213,528	0.08
10	4587	PEPTID	3,766,652	0.10
11	3623	BILLINGS	3,701,882	0.57
12	2706	BROCCOL	3,591,039	0.63
13	2497	UNITED	3,055,364	0.18
14	6993	AGCAP	2,800,422	0.43
15	6769	THINE	2,666,911	0.44
16	2160	GNI	2,463,465	0.56
17	6078	VALUE HR	2,301,420	0.43
18	4571	NANOCARI	2,273,488	0.24
19	3854	I'LL	2,182,996	0.66
20	1711	SHODEN	2,153,023	1.07
21	7751	CANON	1,853,444	0.06
22	6666	RIVER EL	1,851,770	0.39
23	8306	MUFG	1,689,206	0.03
24	4974	TAKARBIO	1,624,448	0.08
25	3782	DDS	1,541,136	0.55
26	1711	SHODEN	2,153,023	1.07
27	7751	CANON	1,853,444	0.06
28	6666	RIVER EL	1,851,770	0.39
29	8306	MUFG	1,689,206	0.03
30	4974	TAKARBIO	1,624,448	0.08

*1USD=98.5JPY

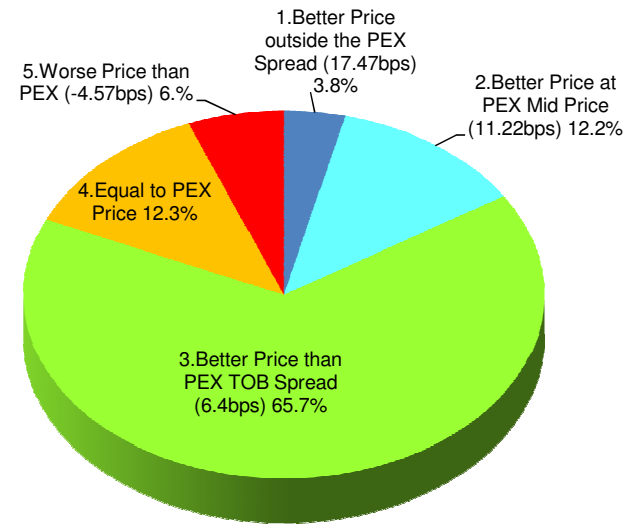
Daytime Session Execution

Nikkei 225 universe in October-2013

PEX : Primary Exchange



BUY Improvement



SELL Improvement

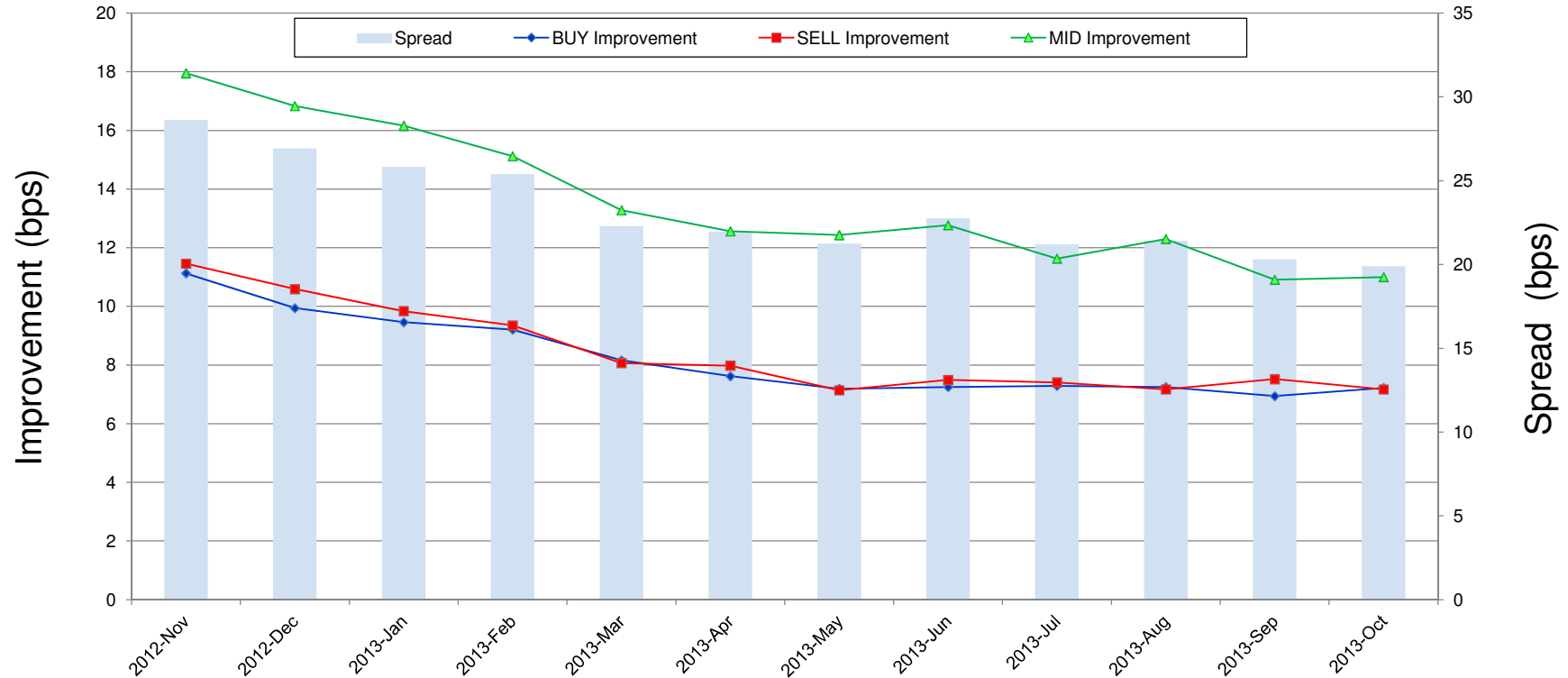
Note1: Excluded the executions from: before 9AM, lunch break, and after 3PM

Note2: Price improvement is calculated by comparing the execution price against the primary market's best bid for each sell or best offer for each buy at the point of execution and is calculated from the perspective of the Taker side of the trade

Note3: The chart% is based on number of trades executed

Improvement of Execution

Nikkei 225 universe in October-2013



Note1: Excluded the executions from: before 9AM, lunch break, and after 3PM

Note2: Price improvement is calculated by comparing the execution price against the primary market's best bid for each sell or best offer for each buy at the point of execution and is calculated from the perspective of the Taker side of the trade

Turnover Top 50 Names in Daytime Session

Ranking for October-2013

Rank	Symbol	Description	Turnover (Million USD)	Market Share vs PrimaryEX(%)
1	9984	SOFTBNK	1,115.43	4.82
2	7203	TOYOTA	1,113.89	9.64
3	8411	MIZUHO	796.31	14.62
4	8306	MUFG	515.39	8.88
5	7751	CANON	363.84	11.26
6	7267	HONDA	362.81	8.04
7	8316	SMFG	344.56	5.26
8	9983	FASTRET	339.36	6.41
9	9433	KDDI	331.60	8.37
10	2914	JT	312.82	9.89
11	7261	MAZDA	301.09	6.03
12	6501	HITACHI	298.62	6.48
13	5401	NSTEELSM	287.95	9.35
14	6988	NTTODEN	271.21	8.93
15	8830	SMIRE&D	270.41	11.33
16	8801	MTI-FU	251.41	10.02
17	9432	NTT	230.53	8.01
18	8309	SMTRUST	207.12	10.93
19	4503	ASTELLAS	201.49	7.66
20	7201	NISSAN	197.47	5.98
21	6502	TOSHIBA	192.50	8.36
22	7011	MHI	162.80	6.30
23	4502	TAKEDAP	160.42	7.26
24	9201	JAL	154.35	7.64
25	7270	FUJIHVVY	153.00	3.46

*1USD=98.5JPY

Rank	Symbol	Description	Turnover (Million USD)	Market Share vs PrimaryEX(%)
26	6861	KEYENCE	152.47	10.18
27	8802	MTB-EST	151.43	5.46
28	8766	TOKIOMAR	149.82	9.79
29	6954	FANUC	144.64	3.89
30	4063	SINETUC	142.91	7.50
31	3668	COLOPL	140.23	1.80
32	5108	BRIDSTN	134.07	6.26
33	9020	JR EAST	132.12	8.54
34	8113	UNICHAM	131.33	9.27
35	6971	KYOCERA	126.88	6.32
36	8601	DAIWASG	126.25	5.39
37	5020	JX	123.81	11.52
38	6367	DAIKINI	122.39	6.81
39	5233	PC CEMT	119.40	7.56
40	9101	NYKLINE	119.11	8.46
41	8031	mitsui	111.05	5.45
42	8002	MARBENI	108.34	6.48
43	9022	JR CENT	104.58	8.49
44	4689	YAHOO J	104.19	4.73
45	3382	7&I-HD	103.47	7.16
46	8308	RESONA	103.33	8.51
47	8303	SHINSEI	102.63	14.94
48	9104	MTI-OSK	100.96	5.50
49	8604	NOMRAHD	100.14	2.18
50	7202	ISUZU	99.91	7.01

Improvement of Monthly Turnover for Top 25 Names

Ranking for October-2013

Rank	Symbol	Name	Sell Executions							Improve Avg bps	Buy Executions							Improve Avg bps
			Worse(A)		Equal(B)		Better (C)		(B)+(C)		Worse(A)		Equal(B)		Better (C)		(B)+(C)	
1	9984	SOFTBNK	1,244	3.50%	4,530	12.73%	29,802	83.77%	96.50%	4.21	1,039	2.54%	3,667	8.97%	36,174	88.49%	96.50%	5.46
2	7203	TOYOTA	442	1.29%	2,005	5.87%	31,719	92.84%	98.71%	5.83	457	1.41%	2,300	7.10%	29,642	91.49%	98.71%	5.74
3	8411	MIZUHO	108	0.24%	1,895	4.14%	43,801	95.63%	99.76%	21.07	184	0.41%	1,825	4.09%	42,641	95.50%	99.76%	21.91
4	8306	MUFG	633	1.97%	2,658	8.26%	28,885	89.77%	98.03%	5.41	661	1.76%	2,889	7.68%	34,090	90.57%	98.03%	5.89
5	7751	CANON	474	2.34%	1,913	9.45%	17,851	88.21%	97.66%	4.92	398	1.93%	1,513	7.32%	18,746	90.75%	97.66%	6.03
6	7267	HONDA	991	4.73%	2,242	10.70%	17,722	84.57%	95.27%	4.16	864	3.90%	2,517	11.36%	18,784	84.75%	95.27%	4.53
7	8316	SMFG	722	3.87%	2,693	14.43%	15,243	81.70%	96.13%	2.84	855	4.11%	2,535	12.18%	17,416	83.71%	96.13%	3.71
8	9983	FASTRET	397	9.01%	580	13.16%	3,431	77.84%	90.99%	3.69	432	9.64%	641	14.30%	3,408	76.05%	90.99%	4.79
9	9433	KDDI	670	3.29%	2,012	9.87%	17,706	86.85%	96.71%	5.62	573	2.91%	1,618	8.21%	17,521	88.88%	96.71%	6.79
10	2914	JT	657	2.73%	2,172	9.03%	21,224	88.24%	97.27%	4.65	517	2.14%	2,157	8.94%	21,463	88.92%	97.27%	5.42
11	7261	MAZDA	357	2.48%	1,413	9.81%	12,631	87.71%	97.52%	7.58	410	2.67%	1,346	8.76%	13,602	88.57%	97.52%	8.44
12	6501	HITACHI	633	4.01%	1,814	11.50%	13,332	84.49%	95.99%	4.87	521	3.55%	1,753	11.94%	12,411	84.51%	95.99%	5.36
13	5401	NSTEELSM	318	2.06%	1,291	8.38%	13,799	89.56%	97.94%	10.10	370	2.27%	1,340	8.22%	14,587	89.51%	97.94%	11.48
14	6988	NTTODEN	763	4.89%	1,816	11.64%	13,024	83.47%	95.11%	5.59	838	4.85%	1,643	9.52%	14,783	85.63%	95.11%	6.55
15	8830	SMIRE&D	432	15.61%	463	16.73%	1,873	67.67%	84.39%	2.87	386	13.41%	508	17.65%	1,985	68.95%	84.39%	4.08
16	8801	MTI-FU	333	9.35%	566	15.89%	2,664	74.77%	90.65%	4.11	370	9.58%	697	18.04%	2,797	72.39%	90.65%	5.44
17	9432	NTT	414	3.13%	1,615	12.21%	11,198	84.66%	96.87%	5.25	398	3.40%	1,387	11.86%	9,908	84.73%	96.87%	6.84
18	8309	SMTRUST	750	5.74%	1,585	12.13%	10,732	82.13%	94.26%	6.19	617	4.69%	1,743	13.26%	10,784	82.05%	94.26%	7.25
19	4503	ASTELLAS	518	4.45%	1,921	16.50%	9,202	79.05%	95.55%	4.49	624	5.19%	1,569	13.05%	9,827	81.76%	95.55%	5.77
20	7201	NISSAN	989	5.00%	2,321	11.73%	16,482	83.28%	95.00%	2.81	915	4.46%	2,873	14.00%	16,731	81.54%	95.00%	3.13
21	6502	TOSHIBA	216	1.78%	1,188	9.77%	10,756	88.45%	98.22%	7.54	283	2.21%	1,147	8.95%	11,387	88.84%	98.22%	8.92
22	7011	MHI	405	4.59%	1,221	13.83%	7,203	81.58%	95.41%	4.69	521	5.34%	1,578	16.16%	7,666	78.50%	95.41%	5.38
23	4502	TAKEDAP	548	5.81%	1,079	11.45%	7,798	82.74%	94.19%	3.11	494	4.76%	1,264	12.18%	8,617	83.06%	94.19%	3.29
24	9201	JAL	219	2.43%	788	8.75%	8,003	88.82%	97.57%	4.76	263	2.96%	1,341	15.11%	7,270	81.92%	97.57%	5.02
25	7270	FUJIHVV	1,646	17.64%	1,763	18.89%	5,924	63.47%	82.36%	1.07	1,754	16.19%	1,608	14.84%	7,475	68.98%	82.36%	1.68

Note1: Excluded the executions from: before 9AM, lunch break, and after 3PM

Note2: Price improvement is calculated by comparing the execution price against the primary market's best bid for each sell or best offer for each buy at the point of execution and is calculated from the perspective of the Taker side of the trade