

Market Report for the Week of April 04, 2016

Daily Averages

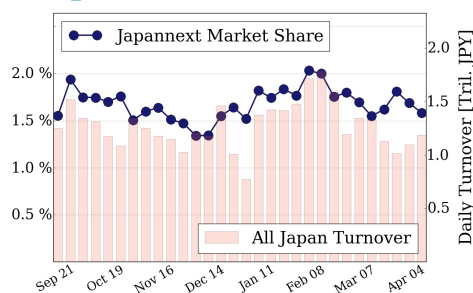
Universe	Value (JPY)	Volume	Share	PI (bps)	Symbols
All Market	83,951,897,475	120,256,288	2.85 %	7.65	1694
Large Cap	18,801,014,620	12,231,620	1.58 %	2.13	100
Mid Cap	45,039,637,072	84,574,380	5.17 %	9.03	403
Small Cap	7,904,296,600	16,456,900	2.59 %	8.52	930
Mothers & Jasadq	4,203,406,432	5,109,820	1.70 %	7.46	188
ETFs & REITs	8,003,542,751	1,883,568	2.39 %	4.00	73

All Market
2.9 %

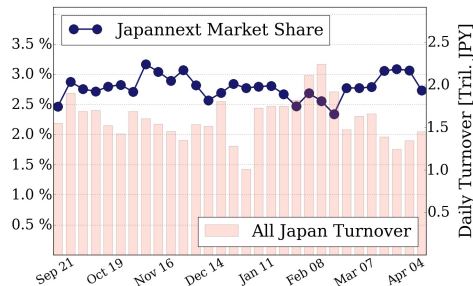
Topix 100
1.6 %

Nikkei 225
2.7 %

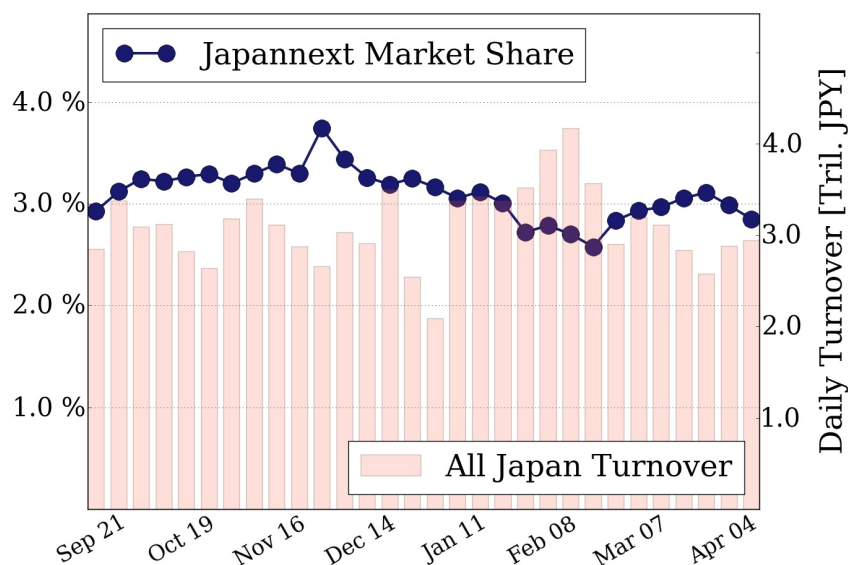
Topix 100



Nikkei 225



All Market



Top Stocks by Turnover

Stock	Value (JPY)	Share	PI (bps)
5406 KOBESTL	9,314,347,400	23.67%	45.44
1357 NKDOUBLE	8,654,935,490	5.62%	3.62
1570 NIKKEILV	7,721,821,007	0.85%	3.41
4565 SOSEI	7,077,150,900	2.53%	3.48
1306 TOPIX F	4,738,474,139	14.89%	3.39

Top Stocks by Market Share

Stock	Value (JPY)	Share	PI (bps)
5406 KOBESTL	9,314,347,400	23.67%	45.44
2212 YAMABAK	1,166,671,700	14.99%	4.05
1306 TOPIX F	4,738,474,139	14.89%	3.39
4004 SHOWDEN	1,555,280,700	14.68%	36.20
8303 SHINSEI	1,972,327,200	14.28%	26.00

Top Stocks by Price Improvement

Stock	Value (JPY)	Share	PI (bps)
6191 EVOLABLE	245,582,370	0.95%	60.11
5406 KOBESTL	9,314,347,400	23.67%	45.44
1821 MS-CON	511,742,700	8.43%	38.33
5202 NP-SGLS	692,355,000	13.02%	36.63
4004 SHOWDEN	1,555,280,700	14.68%	36.20

Top Stocks by Savings

Stock	Value (JPY)	Share	Savings
5406 KOBESTL	9,314,347,400	23.67%	38,578,000
4004 SHOWDEN	1,555,280,700	14.68%	5,017,100
7013 IHI	2,802,640,400	11.11%	4,225,300
8303 SHINSEI	1,972,327,200	14.28%	3,826,600
2768 SOJITZ	1,894,245,610	10.45%	2,740,440

- ▶ Analysis is based on SBI Japannext and Thomson Reuters data. Large Cap = TPX100, Mid Cap = TPX500 excl. TPX100, Small Cap = Section1 + Section2 excl. TPX500.
- ▶ All Japan Turnover = Japannext (J+X+U+N) + TSE (excl. Tostnet) + Chi-X (excl. Chi-Match, Chi-Select). Market Share = Japannext turnover / All Japan Turnover.
- ▶ Price Improvement (PI) and Savings (PI*volume) are calculated by comparing the execution price against the primary market's best bid for each sell or best offer for each buy at the point of execution from the taker's perspective. Reported PI is a value-weighted average. Names with weekly traded value less than 100,000,000 JPY are excluded from the rankings tables.