

# Market Report for the Week of June 06, 2016

## Daily Averages

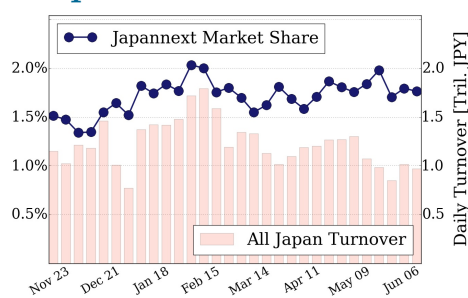
Universe	Value (JPY)	Volume	Share	PI (bps)	Symbols
All Market	90,147,970,057	108,738,307	3.52 %	6.31	1716
Large Cap	17,112,990,114	10,917,700	1.76 %	1.70	100
Mid Cap	53,177,152,674	75,655,840	6.53 %	6.89	403
Small Cap	9,150,299,856	17,096,220	2.99 %	7.97	894
Mothers & Jasdq	5,056,922,496	4,266,920	2.03 %	11.66	244
ETFs & REITs	5,650,604,917	801,627	2.57 %	3.91	75

All Market  
**3.5 %**

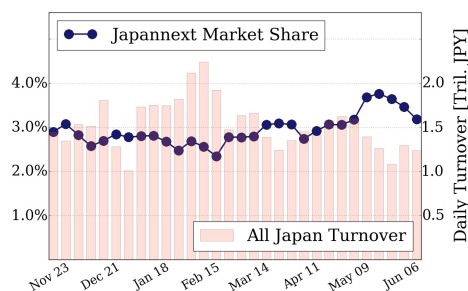
Topix 100  
**1.8 %**

Nikkei 225  
**3.2 %**

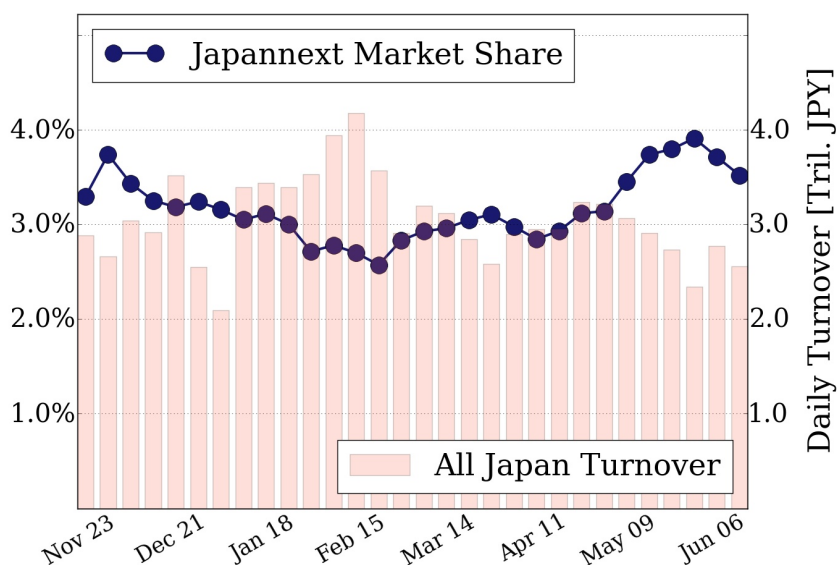
### Topix 100



### Nikkei 225



### All Market



### Top Stocks by Turnover

Stock	Value (JPY)	Share	PI (bps)
1570 NIKKEILV	8,403,248,008	1.38%	2.82
6176 BRANGIST	5,241,279,300	2.79%	6.62
6762 TDK	4,414,190,500	8.72%	5.40
5406 KOBESTL	4,287,493,600	17.37%	44.36
9983 FASTRET	4,125,467,300	3.55%	1.40

### Top Stocks by Market Share

Stock	Value (JPY)	Share	PI (bps)
8952 JRE	3,238,593,400	19.87%	6.20
6753 SHARP	1,199,886,600	18.03%	29.17
6997 NP-CHCN	181,117,700	17.60%	24.62
5406 KOBESTL	4,287,493,600	17.37%	44.36
6869 SYSMEX	3,877,734,400	17.09%	4.95

### Top Stocks by Price Improvement

Stock	Value (JPY)	Share	PI (bps)
3103 UNITIKA	212,577,000	3.53%	68.87
5406 KOBESTL	4,287,493,600	17.37%	44.36
5202 NP-SGLS	517,794,600	10.18%	39.70
8202 LAOX	209,414,900	7.20%	39.29
1821 MS-CON	253,257,140	10.14%	37.48

### Top Stocks by Savings

Stock	Value (JPY)	Share	Savings
5406 KOBESTL	4,287,493,600	17.37%	17,557,900
8303 SHINSEI	2,591,516,500	15.62%	5,109,500
6753 SHARP	1,199,886,600	18.03%	3,106,700
7013 IHI	2,937,080,300	10.55%	3,014,000
9101 NYKLINE	1,532,993,900	11.70%	2,480,700

- ▶ Analysis is based on SBI Japannext and Thomson Reuters data. Large Cap = TPX100, Mid Cap = TPX500 excl. TPX100, Small Cap = Section1 + Section2 excl. TPX500.
- ▶ All Japan Turnover = Japannext (J+X+U+N) + TSE (excl. Tostnet) + Chi-X (excl. Chi-Match, Chi-Select). Market Share = Japannext turnover / All Japan Turnover.
- ▶ Price Improvement (PI) and Savings (PI\*volume) are calculated by comparing the execution price against the primary market's best bid for each sell or best offer for each buy at the point of execution from the taker's perspective. Reported PI is a value-weighted average. Names with weekly traded value less than 100,000,000 JPY are excluded from the rankings tables.