

Market Report for the Week of June 20, 2016

Daily Averages

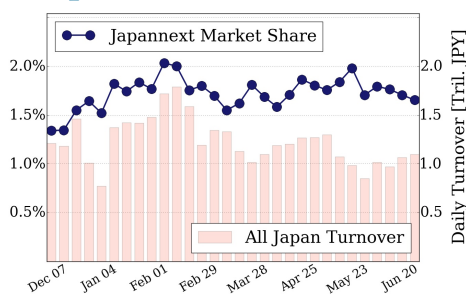
Universe	Value (JPY)	Volume	Share	PI (bps)	Symbols
All Market	87,354,172,157	117,266,049	3.10 %	7.46	1738
Large Cap	18,145,789,360	13,089,320	1.65 %	2.30	100
Mid Cap	49,179,555,420	81,485,980	6.01 %	8.10	403
Small Cap	8,535,288,170	16,697,600	2.98 %	9.67	924
Mothers & Jasdq	4,138,633,550	4,405,200	2.10 %	12.52	234
ETFs & REITs	7,354,905,657	1,587,949	1.76 %	4.01	76

All Market
3.1 %

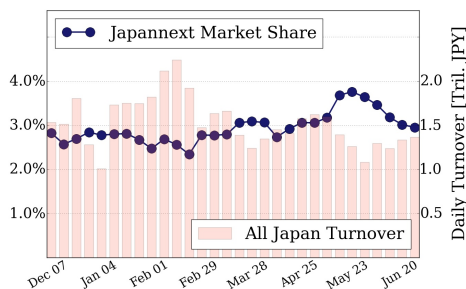
Topix 100
1.7 %

Nikkei 225
3.0 %

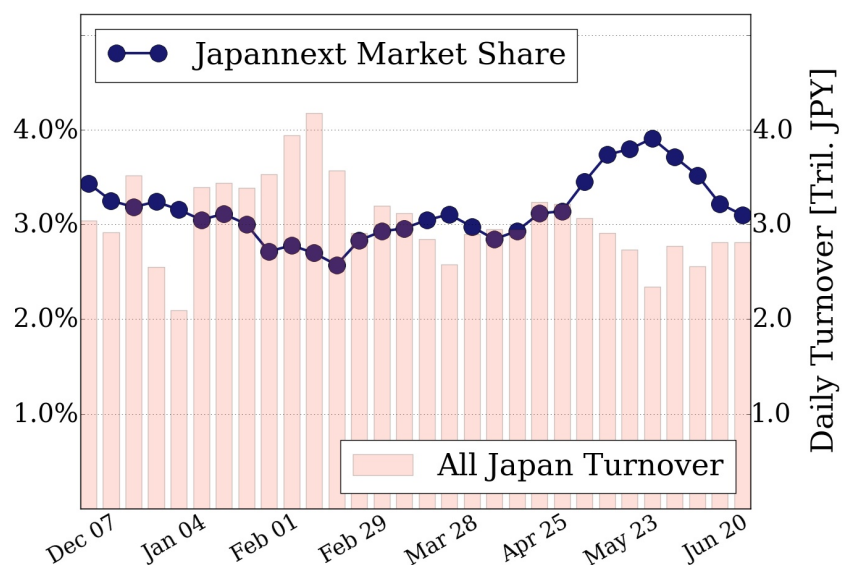
Topix 100



Nikkei 225



All Market



Top Stocks by Turnover

Stock	Value (JPY)	Share	PI (bps)
1570 NIKKEILV	13,013,715,711	1.08%	3.36
4565 SOSEI	6,456,240,900	2.76%	4.30
1357 NKDOUBLE	5,434,985,405	3.00%	5.89
5406 KOBESTL	5,207,191,300	16.38%	50.55
9983 FASTRET	5,023,174,400	4.22%	2.15

Top Stocks by Market Share

Stock	Value (JPY)	Share	PI (bps)
8303 SHINSEI	2,439,400,600	16.79%	23.70
5406 KOBESTL	5,207,191,300	16.38%	50.55
2212 YAMABAK	1,501,591,500	15.46%	4.85
4927 POLAORHD	1,808,802,600	15.16%	5.34
8327 NINPC-BK	332,978,000	13.64%	17.43

Top Stocks by Price Improvement

Stock	Value (JPY)	Share	PI (bps)
3103 UNITIKA	241,803,300	3.68%	74.35
5406 KOBESTL	5,207,191,300	16.38%	50.55
5202 NP-SGLS	1,255,950,400	10.62%	43.54
1821 MS-CON	298,054,430	8.99%	38.62
8202 LAOX	243,847,700	5.84%	35.90

Top Stocks by Savings

Stock	Value (JPY)	Share	Savings
5406 KOBESTL	5,207,191,300	16.38%	20,900,300
9101 NYKLINE	2,871,792,100	12.81%	4,393,000
8303 SHINSEI	2,439,400,600	16.79%	4,381,200
5202 NP-SGLS	1,255,950,400	10.62%	3,866,700
6753 SHARP	1,802,442,000	11.57%	3,454,300

- ▶ Analysis is based on SBI Japannext and Thomson Reuters data. Large Cap = TPX100, Mid Cap = TPX500 excl. TPX100, Small Cap = Section1 + Section2 excl. TPX500.
- ▶ All Japan Turnover = Japannext (J+X+U+N) + TSE (excl. Tostnet) + Chi-X (excl. Chi-Match, Chi-Select). Market Share = Japannext turnover / All Japan Turnover.
- ▶ Price Improvement (PI) and Savings (PI*volume) are calculated by comparing the execution price against the primary market's best bid for each sell or best offer for each buy at the point of execution from the taker's perspective. Reported PI is a value-weighted average. Names with weekly traded value less than 100,000,000 JPY are excluded from the rankings tables.