

Market Report for the Week of July 25, 2016

Daily Averages

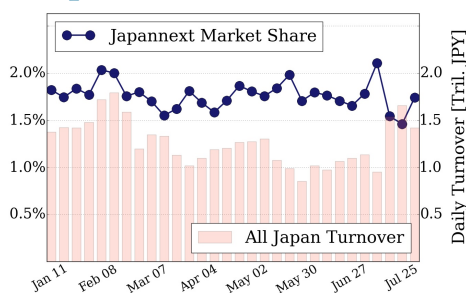
Universe	Value (JPY)	Volume	Share	PI (bps)	Symbols
All Market	86,346,390,927	105,130,398	2.80 %	6.48	1940
Large Cap	24,659,583,292	13,734,880	1.74 %	2.14	100
Mid Cap	43,007,558,488	68,209,040	4.77 %	7.52	402
Small Cap	9,291,773,282	18,374,240	2.75 %	7.84	1036
Mothers & Jasdq	2,998,147,084	3,536,980	2.94 %	8.68	326
ETFs & REITs	6,389,328,781	1,275,258	1.97 %	3.56	77

All Market
2.8 %

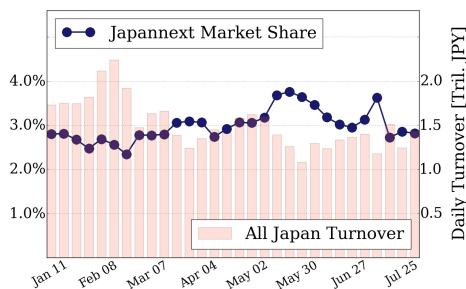
Topix 100
1.7 %

Nikkei 225
2.8 %

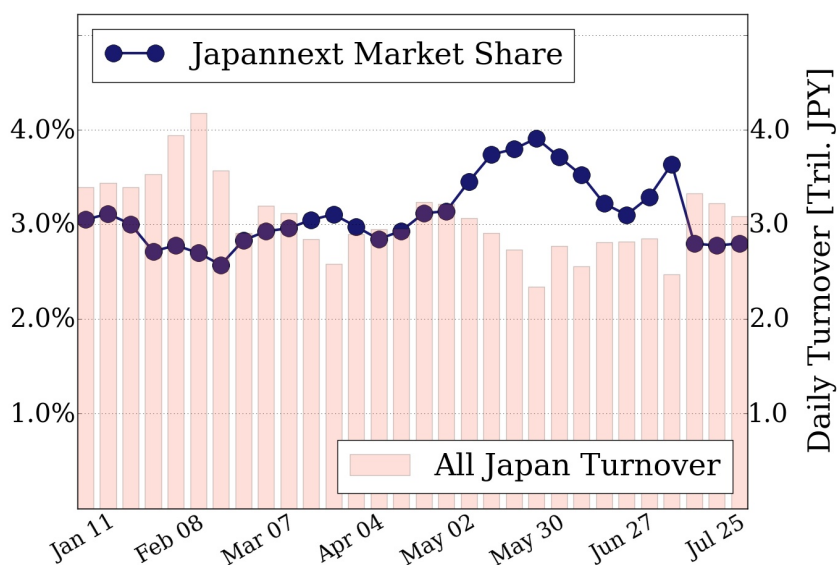
Topix 100



Nikkei 225



All Market



Top Stocks by Turnover

Stock	Value (JPY)	Share	PI (bps)
7974 NINTEND	22,911,767,900	1.61%	1.46
1570 NIKKEILV	9,347,289,191	1.15%	3.45
1357 NKDOUBLE	4,244,163,481	2.14%	3.88
9984 SOFTBNKG	4,166,333,000	1.47%	2.08
1321 225FUND	4,106,630,808	5.56%	2.42

Top Stocks by Market Share

Stock	Value (JPY)	Share	PI (bps)
5406 KOBESTL	3,062,451,500	14.87%	50.05
5801 FURKWAE	1,239,646,100	13.33%	13.11
5196 KINUGWA	143,053,600	12.88%	3.24
8327 NINPC-BK	357,743,500	12.72%	17.31
8410 SEVEN BK	2,292,441,300	12.41%	8.93

Top Stocks by Price Improvement

Stock	Value (JPY)	Share	PI (bps)
6969 MATUOEL	117,102,500	0.78%	96.77
3103 UNITIKA	297,304,000	4.00%	69.26
5202 NP-SGLS	428,606,700	9.09%	53.98
5406 KOBESTL	3,062,451,500	14.87%	50.05
6753 SHARP	1,943,390,000	11.43%	45.86

Top Stocks by Savings

Stock	Value (JPY)	Share	Savings
5406 KOBESTL	3,062,451,500	14.87%	13,368,900
6753 SHARP	1,943,390,000	11.43%	7,999,100
8303 SHINSEI	2,698,966,600	10.73%	4,743,700
9104 MTI-OSK	2,366,094,300	11.50%	2,790,100
7013 IHI	3,859,654,500	8.38%	2,663,400

- ▶ Analysis is based on SBI Japannext and Thomson Reuters data. Large Cap = TPX100, Mid Cap = TPX500 excl. TPX100, Small Cap = Section1 + Section2 excl. TPX500.
- ▶ All Japan Turnover = Japannext (J+X+U+N) + TSE (excl. Tostnet) + Chi-X (excl. Chi-Match, Chi-Select). Market Share = Japannext turnover / All Japan Turnover.
- ▶ Price Improvement (PI) and Savings (PI*volume) are calculated by comparing the execution price against the primary market's best bid for each sell or best offer for each buy at the point of execution from the taker's perspective. Reported PI is a value-weighted average. Names with weekly traded value less than 100,000,000 JPY are excluded from the rankings tables.