

Market Report for the Week of August 01, 2016

Daily Averages

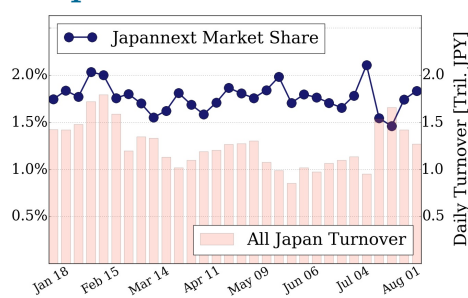
Universe	Value (JPY)	Volume	Share	PI (bps)	Symbols
All Market	89,539,097,791	114,645,684	3.10 %	6.57	1806
Large Cap	23,226,455,114	13,554,460	1.83 %	1.85	100
Mid Cap	46,821,713,038	74,290,200	5.15 %	7.57	401
Small Cap	9,496,960,610	22,432,540	2.99 %	9.03	982
Mothers & Jasdq	3,043,750,342	3,080,040	2.82 %	8.57	245
ETFs & REITs	6,950,218,687	1,288,444	2.47 %	3.87	78

All Market
3.1 %

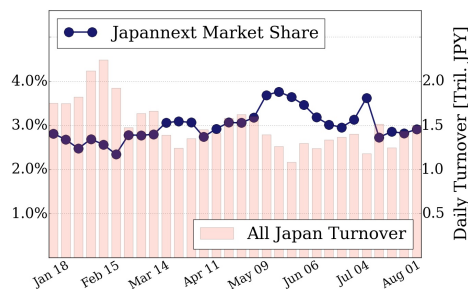
Topix 100
1.8 %

Nikkei 225
2.9 %

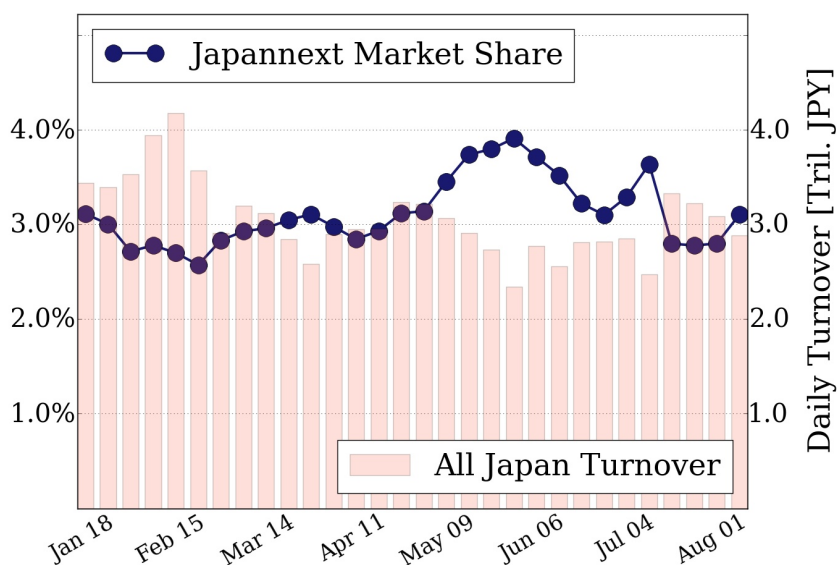
Topix 100



Nikkei 225



All Market



Top Stocks by Turnover

Stock	Value (JPY)	Share	PI (bps)
1570 NIKKEILV	10,807,548,224	1.64%	3.08
9983 FASTRET	6,610,757,400	3.37%	2.80
7974 NINTEND	5,840,326,200	1.20%	1.47
9984 SOFTBNKG	4,993,634,680	1.23%	1.84
8028 FAMILYM	4,686,060,000	4.48%	4.33

Top Stocks by Market Share

Stock	Value (JPY)	Share	PI (bps)
6997 NP-CHCN	224,250,300	16.66%	18.12
5989 H-ONE	133,216,700	15.58%	0.00
5406 KOBESTL	3,062,659,500	14.66%	54.90
8327 NINPC-BK	493,311,300	14.38%	13.47
5801 FURKWAE	1,007,305,600	14.37%	12.81

Top Stocks by Price Improvement

Stock	Value (JPY)	Share	PI (bps)
5721 S-SCIEN	193,130,050	12.25%	93.05
3647 GTHREEHD	420,355,520	2.60%	87.40
3103 UNITIKA	208,101,400	2.68%	69.74
5406 KOBESTL	3,062,659,500	14.66%	54.90
5202 NP-SGLS	551,863,300	8.10%	50.75

Top Stocks by Savings

Stock	Value (JPY)	Share	Savings
5406 KOBESTL	3,062,659,500	14.66%	15,724,100
8303 SHINSEI	3,649,180,600	13.94%	6,905,500
9101 NYKLINE	2,462,837,000	14.17%	4,983,500
7013 IHI	4,551,544,200	10.85%	4,543,100
7012 KHI	3,022,240,500	10.71%	2,923,400

- ▶ Analysis is based on SBI Japannext and Thomson Reuters data. Large Cap = TPX100, Mid Cap = TPX500 excl. TPX100, Small Cap = Section1 + Section2 excl. TPX500.
- ▶ All Japan Turnover = Japannext (J+X+U+N) + TSE (excl. Tostnet) + Chi-X (excl. Chi-Match, Chi-Select). Market Share = Japannext turnover / All Japan Turnover.
- ▶ Price Improvement (PI) and Savings (PI*volume) are calculated by comparing the execution price against the primary market's best bid for each sell or best offer for each buy at the point of execution from the taker's perspective. Reported PI is a value-weighted average. Names with weekly traded value less than 100,000,000 JPY are excluded from the rankings tables.