

# Market Report for the Week of September 26, 2016

## Daily Averages

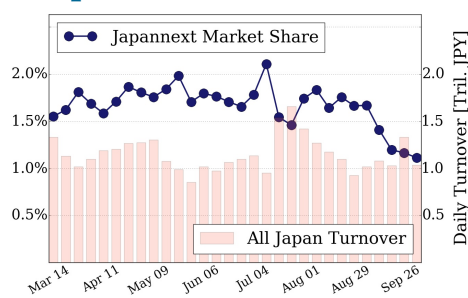
Universe	Value (JPY)	Volume	Share	PI (bps)	Symbols
All Market	64,497,615,014	113,819,417	2.68 %	9.97	1809
Large Cap	11,475,772,978	9,501,440	1.11 %	1.85	100
Mid Cap	36,125,405,988	50,738,500	4.87 %	7.03	399
Small Cap	8,447,843,912	16,721,940	3.09 %	7.59	963
Mothers & Jasdaq	3,294,317,612	35,675,120	2.50 %	220.69	272
ETFs & REITs	5,154,274,524	1,182,417	2.25 %	4.08	74

All Market  
**2.7 %**

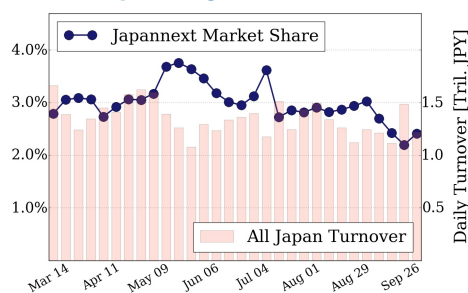
Topix 100  
**1.1 %**

Nikkei 225  
**2.4 %**

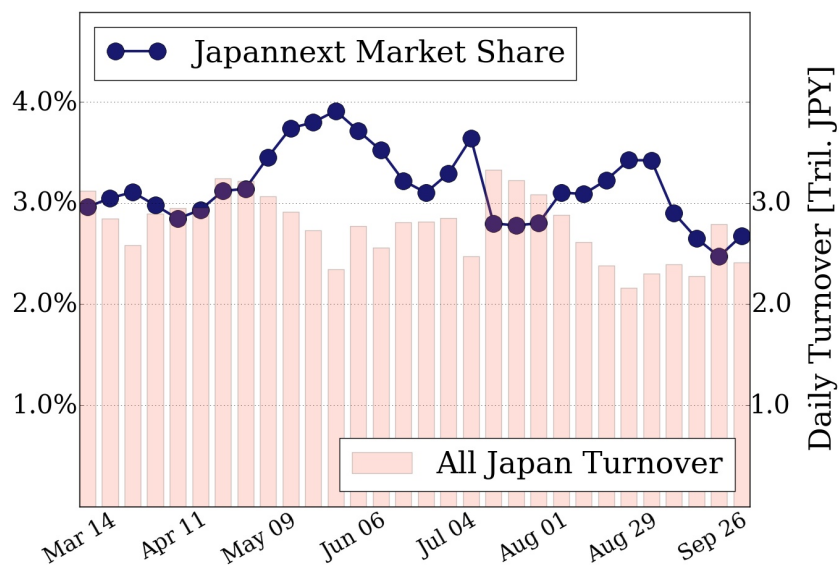
### Topix 100



### Nikkei 225



### All Market



### Top Stocks by Turnover

Stock	Value (JPY)	Share	PI (bps)
1570 NIKKEILV	8,553,968,122	1.48%	3.38
6762 TDK	4,268,107,600	7.80%	3.91
4183 MTI-CHM	3,254,060,000	12.99%	7.95
7203 TOYOTA	3,167,711,500	1.21%	1.83
1357 NKDOUBLE	3,143,698,554	3.38%	0.98

### Top Stocks by Market Share

Stock	Value (JPY)	Share	PI (bps)
9898 SAKHADIA	400,810,100	21.87%	2178.30
7003 MTI-E&S	773,957,400	18.33%	31.68
8303 SHINSEI	2,880,576,800	18.22%	26.59
9104 MTI-OSK	3,113,288,000	17.49%	16.62
5706 MTI-M&S	977,020,900	16.60%	17.84

### Top Stocks by Price Improvement

Stock	Value (JPY)	Share	PI (bps)
9898 SAKHADIA	400,810,100	21.87%	2178.30
3103 UNITIKA	255,421,800	3.22%	84.96
3350 RED	176,720,620	2.65%	75.15
8201 SAGMICO	542,671,500	5.29%	54.03
1821 MS-CON	203,776,400	12.21%	45.63

### Top Stocks by Savings

Stock	Value (JPY)	Share	Savings
9898 SAKHADIA	400,810,100	21.87%	82,181,930
8303 SHINSEI	2,880,576,800	18.22%	6,766,400
9104 MTI-OSK	3,113,288,000	17.49%	4,209,800
5406 KOBESTL	1,076,673,370	6.77%	3,830,950
9101 NYKLINE	2,011,562,600	10.64%	3,522,000

- ▶ Analysis is based on SBI Japannext and Thomson Reuters data. Large Cap = TPX100, Mid Cap = TPX500 excl. TPX100, Small Cap = Section1 + Section2 excl. TPX500.
- ▶ All Japan Turnover = Japannext (J+X+U+N) + TSE (excl. Tostnet) + Chi-X (excl. Chi-Match, Chi-Select). Market Share = Japannext turnover / All Japan Turnover.
- ▶ Price Improvement (PI) and Savings (PI\*volume) are calculated by comparing the execution price against the primary market's best bid for each sell or best offer for each buy at the point of execution from the taker's perspective. Reported PI is a value-weighted average. Names with weekly traded value less than 100,000,000 JPY are excluded from the rankings tables.