

# Market Report for the Week of October 24, 2016

## Daily Averages

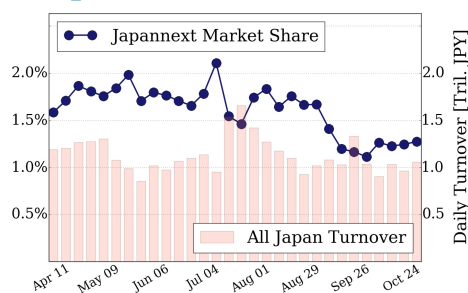
Universe	Value (JPY)	Volume	Share	PI (bps)	Symbols
All Market	73,057,556,149	480,770,272	2.91 %	32.94	1888
Large Cap	13,453,589,388	8,043,020	1.27 %	1.61	100
Mid Cap	41,485,947,738	50,230,580	5.22 %	6.20	400
Small Cap	11,011,118,494	28,146,500	2.80 %	10.85	1027
Mothers & Jasdaq	3,278,454,896	393,617,600	3.07 %	897.71	291
ETFs & REITs	3,828,445,633	732,572	2.38 %	3.10	71

All Market  
**2.9 %**

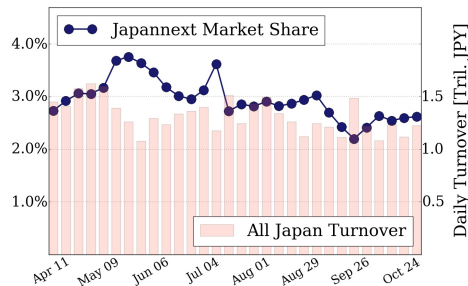
Topix 100  
**1.3 %**

Nikkei 225  
**2.6 %**

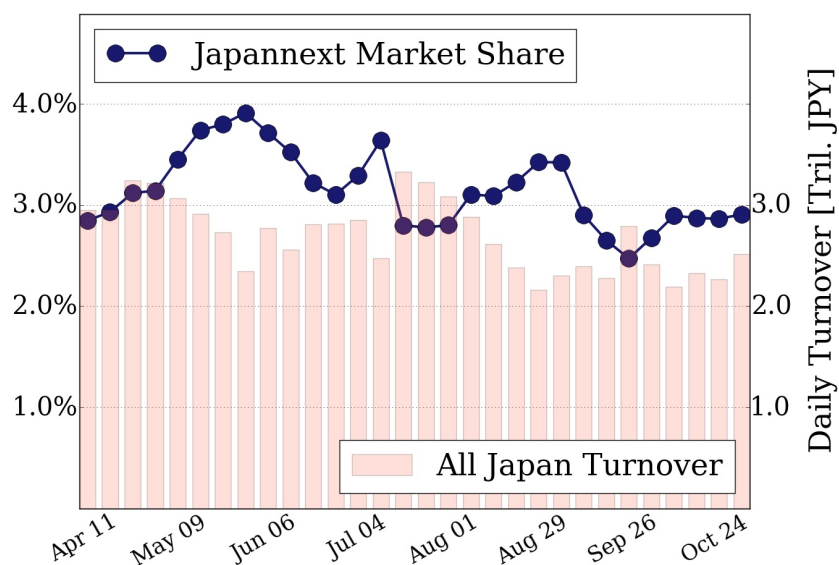
### Topix 100



### Nikkei 225



### All Market



### Top Stocks by Turnover

Stock	Value (JPY)	Share	PI (bps)
7974 NINTEND	6,016,160,000	1.27%	1.16
1570 NIKKEILV	5,534,152,499	1.45%	3.03
7013 IHI	3,470,942,700	8.12%	13.43
7211 MMC	3,089,891,480	3.40%	4.91
5233 PC CEMT	3,074,675,000	9.10%	12.64

### Top Stocks by Market Share

Stock	Value (JPY)	Share	PI (bps)
9898 SAKHADIA	2,261,300,970	92.23%	3099.05
8410 SEVEN BK	1,493,986,680	15.83%	12.51
4307 NRI	1,835,036,800	15.32%	5.15
8078 HANWA	525,393,900	14.99%	12.64
4689 YAHOO J	2,790,474,570	14.58%	9.86

### Top Stocks by Price Improvement

Stock	Value (JPY)	Share	PI (bps)
9898 SAKHADIA	2,261,300,970	92.23%	3099.05
8107 KIMRTAN	231,455,900	14.52%	770.36
3103 UNITIKA	353,891,100	2.00%	53.50
1821 MS-CON	247,931,390	7.02%	36.81
7003 MTI-E&S	655,105,800	11.16%	27.25

### Top Stocks by Savings

Stock	Value (JPY)	Share	Savings
9898 SAKHADIA	2,261,300,970	92.23%	817,129,500
8107 KIMRTAN	231,455,900	14.52%	10,634,000
6753 SHARP	3,025,807,100	11.01%	5,516,000
8303 SHINSEI	2,459,437,800	14.28%	5,464,300
9101 NYKLINE	2,425,125,300	13.01%	4,038,700

- ▶ Analysis is based on SBI Japannext and Thomson Reuters data. Large Cap = TPX100, Mid Cap = TPX500 excl. TPX100, Small Cap = Section1 + Section2 excl. TPX500.
- ▶ All Japan Turnover = Japannext (J+X+U+N) + TSE (excl. Tostnet) + Chi-X (excl. Chi-Match, Chi-Select). Market Share = Japannext turnover / All Japan Turnover.
- ▶ Price Improvement (PI) and Savings (PI\*volume) are calculated by comparing the execution price against the primary market's best bid for each sell or best offer for each buy at the point of execution from the taker's perspective. Reported PI is a value-weighted average. Names with weekly traded value less than 100,000,000 JPY are excluded from the rankings tables.