

Market Report for the Week of January 02, 2017

Daily Averages

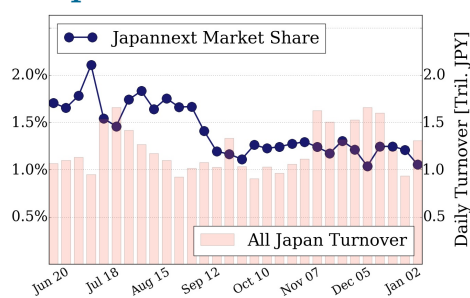
Universe	Value (JPY)	Volume	Share	PI (bps)	Symbols
All Market	82,596,625,832	96,522,077	2.65 %	5.41	2149
Large Cap	13,768,484,080	9,399,733	1.05 %	1.57	100
Mid Cap	42,476,708,940	46,772,066	4.53 %	5.37	401
Small Cap	14,841,970,516	32,859,333	3.41 %	8.08	1194
Mothers & Jasdaq	4,088,198,573	6,022,600	2.51 %	8.90	368
ETFs & REITs	7,421,263,722	1,468,344	2.76 %	3.05	86

All Market
2.7 %

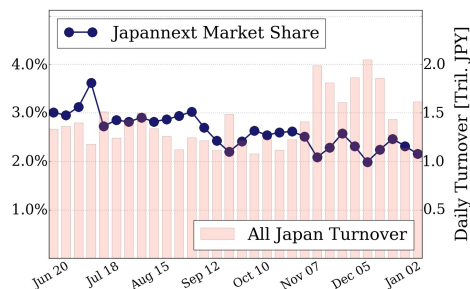
Topix 100
1.1 %

Nikkei 225
2.2 %

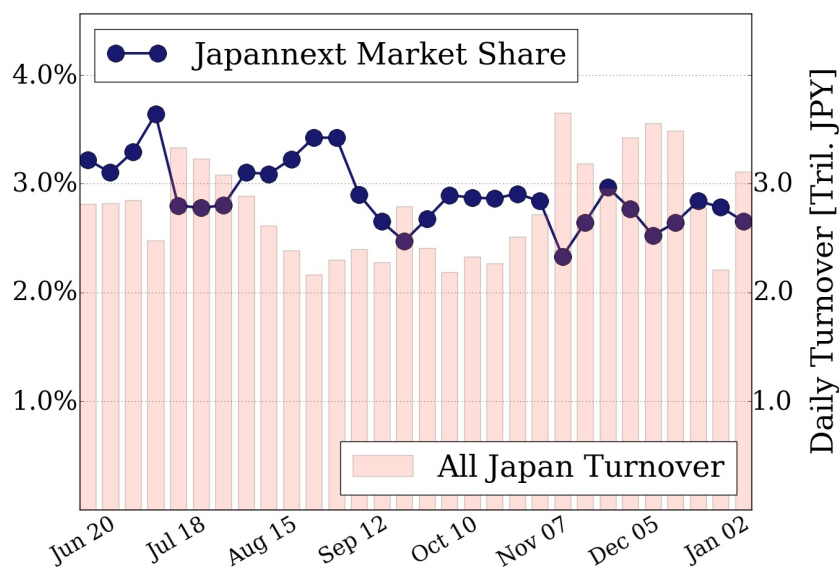
Topix 100



Nikkei 225



All Market



Top Stocks by Turnover

Stock	Value (JPY)	Share	PI (bps)
1570 NIKKEILV	9,170,734,937	2.10%	1.37
6753 SHARP	7,951,457,800	5.53%	8.93
7211 MMC	2,840,146,730	5.12%	4.55
7012 KHI	2,553,606,700	10.21%	8.69
6502 TOSHIBA	2,154,366,200	1.00%	4.08

Top Stocks by Market Share

Stock	Value (JPY)	Share	PI (bps)
5563 NP-DENK	122,850,420	18.42%	13.64
1366 DW 225DI	398,335,920	17.13%	4.72
7003 MTI-E&S	565,585,200	14.79%	18.54
9613 NTTDATA	1,715,029,000	13.96%	5.38
4208 UBE IND	780,172,100	13.04%	14.50

Top Stocks by Price Improvement

Stock	Value (JPY)	Share	PI (bps)
3825 REMIX	187,645,460	6.98%	66.59
3103 UNITIKA	168,333,100	3.13%	37.59
8704 TRADERS	117,384,480	5.72%	35.89
6721 WINTEST	320,212,780	1.94%	33.56
3845 I-FREEK	294,669,350	2.92%	29.19

Top Stocks by Savings

Stock	Value (JPY)	Share	Savings
6753 SHARP	7,951,457,800	5.53%	4,504,000
9101 NYKLINE	1,583,594,200	7.55%	2,131,200
8303 SHINSEI	1,371,529,500	11.12%	1,796,600
7012 KHI	2,553,606,700	10.21%	1,520,100
9104 MTI-OSK	1,423,598,700	7.09%	1,233,500

- ▶ Analysis is based on SBI Japannext and Thomson Reuters data. Large Cap = TPX100, Mid Cap = TPX500 excl. TPX100, Small Cap = Section1 + Section2 excl. TPX500.
- ▶ All Japan Turnover = Japannext (J+X+U+N) + TSE (excl. Tostnet) + Chi-X (excl. Chi-Match, Chi-Select).
Market Share = Japannext turnover / All Japan Turnover.
- ▶ Price Improvement (PI) and Savings (PI*volume) are calculated by comparing the execution price against the primary market's best bid for each sell or best offer for each buy at the point of execution from the taker's perspective. Reported PI is a value-weighted average. Names with weekly traded value less than 100,000,000 JPY are excluded from the rankings tables.