

Market Report for the Week of March 27, 2017

Daily Averages

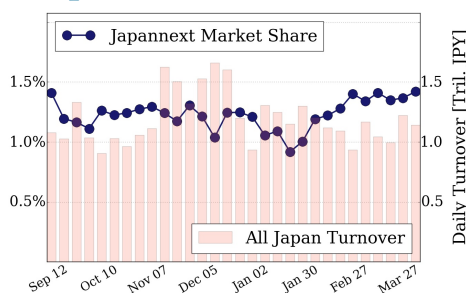
Universe	Value (JPY)	Volume	Share	PI (bps)	Symbols
All Market	99,159,035,055	149,579,751	3.61 %	7.16	2297
Large Cap	16,186,320,472	11,739,480	1.42 %	1.51	100
Mid Cap	57,384,246,704	60,393,000	6.41 %	5.17	400
Small Cap	15,685,217,198	71,573,020	4.19 %	21.12	1293
Mothers & Jasdaq	3,931,184,830	4,851,600	2.52 %	8.92	416
ETFs & REITs	5,972,065,851	1,022,651	3.33 %	2.83	88

All Market
3.6 %

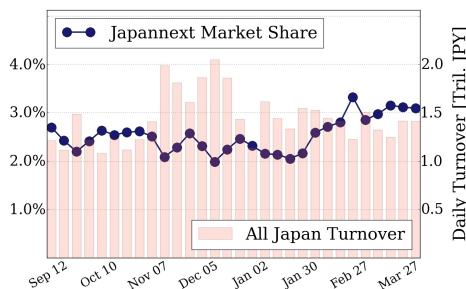
Topix 100
1.4 %

Nikkei 225
3.1 %

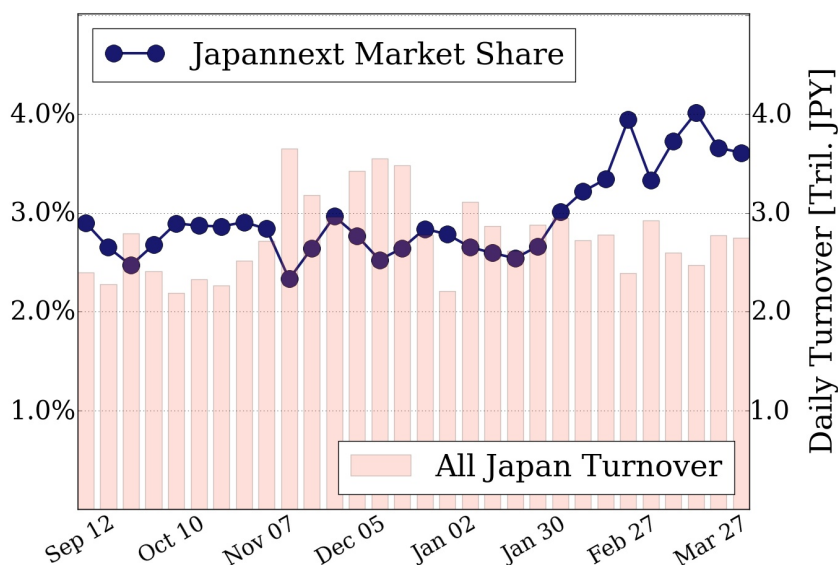
Topix 100



Nikkei 225



All Market



Top Stocks by Turnover

Stock	Value (JPY)	Share	PI (bps)
1570 NIKKEILV	9,846,351,475	2.18%	1.39
6753 SHARP	8,008,742,900	7.20%	6.91
4689 YAHOO J	4,858,664,540	14.57%	6.69
6098 RECRUIT	4,162,016,400	8.33%	5.21
9101 NYKLINE	4,058,614,500	14.93%	14.16

Top Stocks by Market Share

Stock	Value (JPY)	Share	PI (bps)
8107 KIMRTAN	1,570,701,300	49.16%	854.56
1365 DW 225LV	1,431,342,038	26.39%	3.27
6773 PIONEER	934,572,690	18.40%	16.57
6310 ISEKI	149,540,000	18.25%	12.69
3088 MA-KIYO	1,784,641,400	17.15%	6.25

Top Stocks by Price Improvement

Stock	Value (JPY)	Share	PI (bps)
8107 KIMRTAN	1,570,701,300	49.16%	854.56
3562 NO.1	107,696,700	0.42%	101.46
6901 SAWAFJI	229,389,500	1.27%	67.25
3777 GEONEXT	157,195,500	7.32%	37.55
3528 PROSPECT	250,590,600	7.66%	36.59

Top Stocks by Savings

Stock	Value (JPY)	Share	Savings
8107 KIMRTAN	1,570,701,300	49.16%	73,019,100
9101 NYKLINE	4,058,614,500	14.93%	4,738,900
4208 UBE IND	3,060,104,300	13.39%	3,730,100
8303 SHINSEI	2,169,399,000	14.71%	3,012,500
7013 IHI	3,468,169,100	12.90%	2,729,700

- ▶ Analysis is based on SBI Japannext and Thomson Reuters data. Large Cap = TPX100, Mid Cap = TPX500 excl. TPX100, Small Cap = Section1 + Section2 excl. TPX500.
- ▶ All Japan Turnover = Japannext (J+X+U+N) + TSE (excl. Tostnet) + Chi-X (excl. Chi-Match, Chi-Select). Market Share = Japannext turnover / All Japan Turnover.
- ▶ Price Improvement (PI) and Savings (PI*volume) are calculated by comparing the execution price against the primary market's best bid for each sell or best offer for each buy at the point of execution from the taker's perspective. Reported PI is a value-weighted average. Names with weekly traded value less than 100,000,000 JPY are excluded from the rankings tables.