

Market Report for the Week of April 03, 2017

Daily Averages

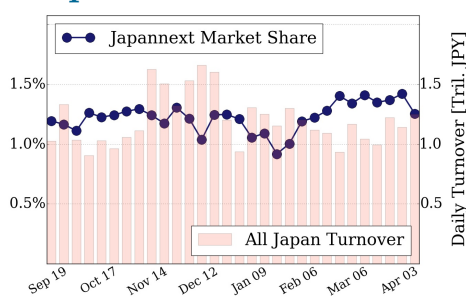
Universe	Value (JPY)	Volume	Share	PI (bps)	Symbols
All Market	105,794,206,786	195,999,056	3.47 %	5.52	2312
Large Cap	15,684,969,330	10,684,000	1.25 %	1.52	100
Mid Cap	61,379,146,012	67,439,100	6.22 %	5.26	399
Small Cap	17,499,007,854	110,622,960	4.43 %	9.35	1288
Mothers & Jasdaq	4,168,633,220	5,759,620	2.34 %	10.23	437
ETFs & REITs	7,062,450,370	1,493,376	2.94 %	2.93	87

All Market
3.5 %

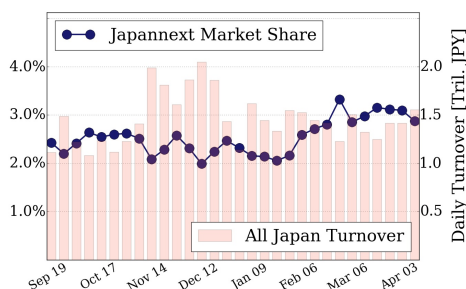
Topix 100
1.3 %

Nikkei 225
2.9 %

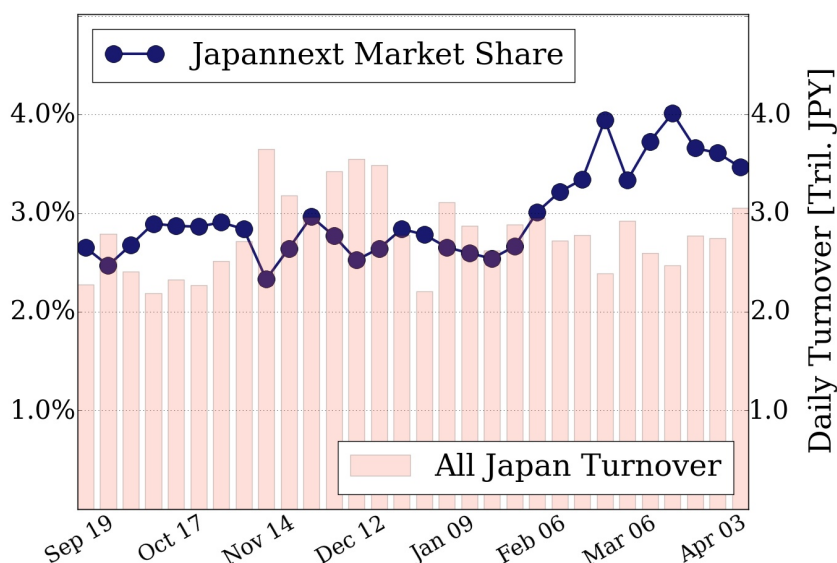
Topix 100



Nikkei 225



All Market



Top Stocks by Turnover

Stock	Value (JPY)	Share	PI (bps)
6753 SHARP	13,138,422,700	8.55%	5.51
1570 NIKKEILV	12,924,663,493	2.05%	1.58
4689 YAHOO J	4,716,698,870	12.57%	6.11
7012 KHI	4,439,986,600	16.05%	10.10
1579 225 BULL	4,392,673,450	10.62%	2.89

Top Stocks by Market Share

Stock	Value (JPY)	Share	PI (bps)
8107 KIMRTAN	2,816,062,500	61.91%	572.44
8303 SHINSEI	3,568,953,100	19.59%	16.73
7003 MTL-E&S	1,341,872,700	18.76%	22.38
3002 GUNZE	432,719,700	16.73%	6.43
7012 KHI	4,439,986,600	16.05%	10.10

Top Stocks by Price Improvement

Stock	Value (JPY)	Share	PI (bps)
8107 KIMRTAN	2,816,062,500	61.91%	572.44
2538 JFLA	176,047,600	1.65%	46.59
3777 GEONEXT	112,721,690	13.25%	41.78
6400 FUJSEKI	150,936,700	2.31%	40.27
4585 UMNPHARM	135,271,260	4.35%	32.96

Top Stocks by Savings

Stock	Value (JPY)	Share	Savings
8107 KIMRTAN	2,816,062,500	61.91%	14,266,300
8303 SHINSEI	3,568,953,100	19.59%	5,278,400
9101 NYKLINE	3,729,374,000	14.00%	4,443,400
7012 KHI	4,439,986,600	16.05%	3,618,800
4208 UBE IND	3,291,279,700	11.79%	3,493,700

- ▶ Analysis is based on SBI Japannext and Thomson Reuters data. Large Cap = TPX100, Mid Cap = TPX500 excl. TPX100, Small Cap = Section1 + Section2 excl. TPX500.
- ▶ All Japan Turnover = Japannext (J+X+U+N) + TSE (excl. Tostnet) + Chi-X (excl. Chi-Match, Chi-Select). Market Share = Japannext turnover / All Japan Turnover.
- ▶ Price Improvement (PI) and Savings (PI*volume) are calculated by comparing the execution price against the primary market's best bid for each sell or best offer for each buy at the point of execution from the taker's perspective. Reported PI is a value-weighted average. Names with weekly traded value less than 100,000,000 JPY are excluded from the rankings tables.