

# Market Report for the Week of April 24, 2017

## Daily Averages

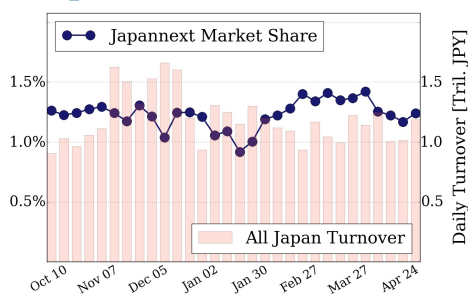
Universe	Value (JPY)	Volume	Share	PI (bps)	Symbols
All Market	94,110,414,575	109,676,484	3.25 %	5.67	2145
Large Cap	14,721,071,904	9,190,740	1.24 %	1.53	100
Mid Cap	57,723,844,368	64,911,100	6.20 %	5.83	397
Small Cap	12,412,570,258	28,914,240	2.99 %	8.55	1154
Mothers & Jasdaq	4,290,632,856	5,453,960	2.70 %	11.52	407
ETFs & REITs	4,962,295,189	1,206,444	2.41 %	3.05	87

All Market  
**3.2 %**

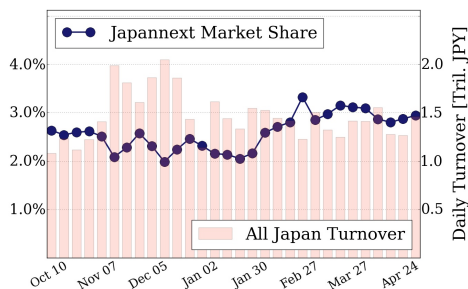
Topix 100  
**1.2 %**

Nikkei 225  
**2.9 %**

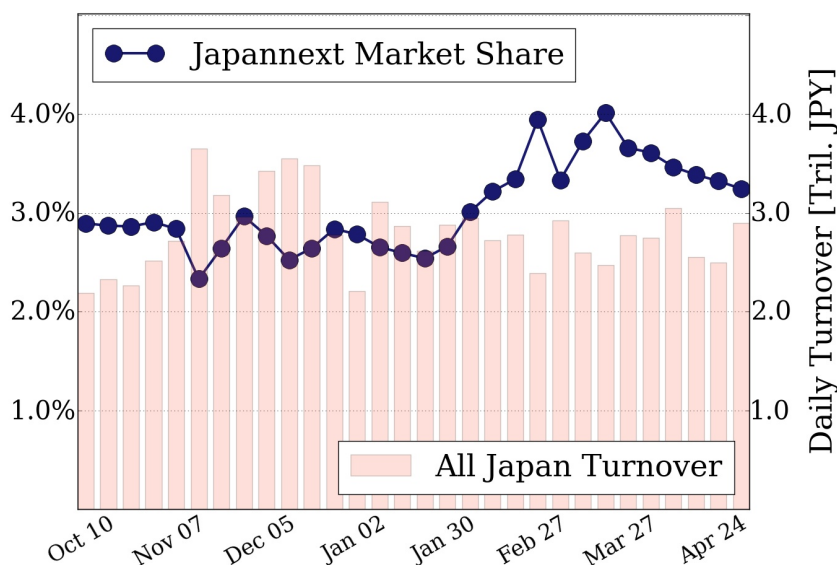
### Topix 100



### Nikkei 225



### All Market



### Top Stocks by Turnover

Stock	Value (JPY)	Share	PI (bps)
1570 NIKKEILV	8,140,742,608	1.50%	1.77
4689 YAHOO J	7,177,278,520	11.49%	6.86
6753 SHARP	5,656,689,300	9.81%	6.81
7013 IHI	5,245,438,600	11.85%	8.73
6098 RECRUIT	5,234,452,300	11.08%	6.36

### Top Stocks by Market Share

Stock	Value (JPY)	Share	PI (bps)
7003 MTI-E&S	1,516,117,400	22.37%	23.07
3101 TOYOBO	627,087,900	21.45%	19.04
8303 SHINSEI	5,170,368,200	20.33%	17.37
3002 GUNZE	386,495,100	19.21%	7.47
9104 MTI-OSK	4,110,098,100	18.38%	9.53

### Top Stocks by Price Improvement

Stock	Value (JPY)	Share	PI (bps)
2538 JFLA	244,379,600	2.83%	45.08
3528 PROSPECT	121,618,100	11.34%	36.33
6771 IKEGAMI	169,948,700	1.40%	35.33
1552 VIXSHORT	281,159,736	6.03%	34.21
2330 FORSIDE	265,801,740	2.45%	33.14

### Top Stocks by Savings

Stock	Value (JPY)	Share	Savings
8303 SHINSEI	5,170,368,200	20.33%	7,375,100
9101 NYKLINE	3,698,155,200	15.05%	4,525,800
7012 KHI	5,029,709,600	17.00%	4,412,800
4689 YAHOO J	7,177,278,520	11.49%	3,784,330
7013 IHI	5,245,438,600	11.85%	3,719,100

- ▶ Analysis is based on SBI Japannext and Thomson Reuters data. Large Cap = TPX100, Mid Cap = TPX500 excl. TPX100, Small Cap = Section1 + Section2 excl. TPX500.
- ▶ All Japan Turnover = Japannext (J+X+U+N) + TSE (excl. Tostnet) + Chi-X (excl. Chi-Match, Chi-Select). Market Share = Japannext turnover / All Japan Turnover.
- ▶ Price Improvement (PI) and Savings (PI\*volume) are calculated by comparing the execution price against the primary market's best bid for each sell or best offer for each buy at the point of execution from the taker's perspective. Reported PI is a value-weighted average. Names with weekly traded value less than 100,000,000 JPY are excluded from the rankings tables.