

# Market Report for the Week of May 15, 2017

## Daily Averages

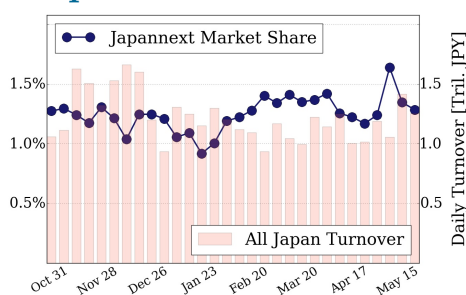
Universe	Value (JPY)	Volume	Share	PI (bps)	Symbols
All Market	114,837,601,849	211,821,772	3.67 %	8.66	2291
Large Cap	16,115,840,822	12,356,700	1.28 %	1.49	100
Mid Cap	69,943,826,988	74,056,500	6.84 %	5.34	399
Small Cap	17,837,897,786	116,494,040	3.64 %	31.91	1250
Mothers & Jasdaq	5,910,538,306	7,528,600	3.41 %	8.89	457
ETFs & REITs	5,029,497,947	1,385,932	2.66 %	3.02	85

All Market  
**3.7 %**

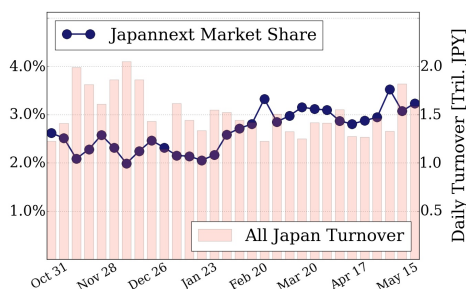
Topix 100  
**1.3 %**

Nikkei 225  
**3.2 %**

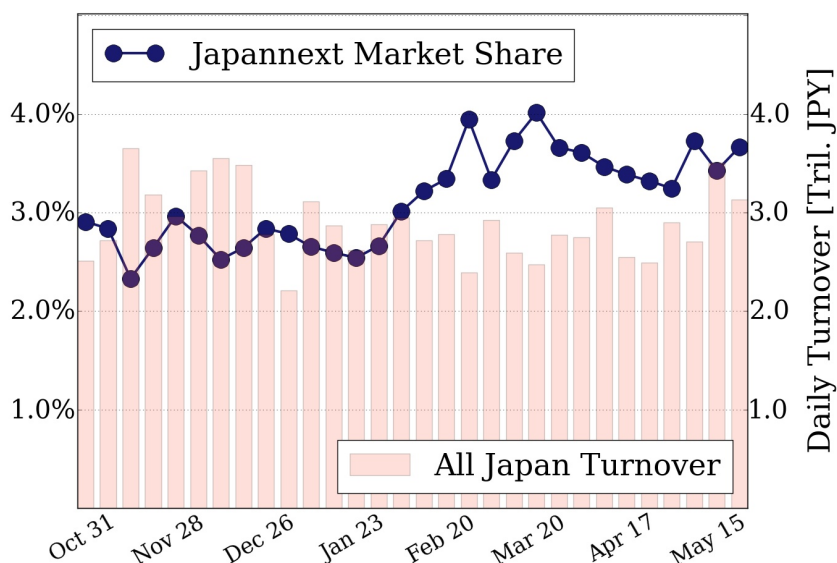
### Topix 100



### Nikkei 225



### All Market



### Top Stocks by Turnover

Stock	Value (JPY)	Share	PI (bps)
1570 NIKKEILV	9,632,498,983	1.81%	1.32
6098 RECRUIT	8,632,739,400	8.68%	5.38
8303 SHINSEI	6,657,415,000	22.59%	18.08
6753 SHARP	5,464,684,800	12.87%	7.00
4324 DENTSU	5,376,626,700	10.98%	5.90

### Top Stocks by Market Share

Stock	Value (JPY)	Share	PI (bps)
8107 KIMRTAN	2,717,031,100	54.23%	979.76
8918 LAND	158,130,360	23.42%	227.18
8303 SHINSEI	6,657,415,000	22.59%	18.08
1813 FUDO TTR	312,164,670	20.76%	16.67
7260 FJIKIKO	205,702,510	20.67%	2.21

### Top Stocks by Price Improvement

Stock	Value (JPY)	Share	PI (bps)
8107 KIMRTAN	2,717,031,100	54.23%	979.76
8918 LAND	158,130,360	23.42%	227.18
3528 PROSPECT	120,361,400	8.38%	44.94
2315 CAICA	331,280,820	6.50%	37.62
1552 VIXSHORT	412,076,867	5.62%	36.54

### Top Stocks by Savings

Stock	Value (JPY)	Share	Savings
8107 KIMRTAN	2,717,031,100	54.23%	123,291,600
8303 SHINSEI	6,657,415,000	22.59%	9,922,400
9101 NYKLINE	5,276,045,000	17.54%	7,597,700
9104 MTI-OSK	4,818,383,500	18.48%	4,155,000
6098 RECRUIT	8,632,739,400	8.68%	3,724,900

- ▶ Analysis is based on SBI Japannext and Thomson Reuters data. Large Cap = TPX100, Mid Cap = TPX500 excl. TPX100, Small Cap = Section1 + Section2 excl. TPX500.
- ▶ All Japan Turnover = Japannext (J+X+U+N) + TSE (excl. Tostnet) + Chi-X (excl. Chi-Match, Chi-Select). Market Share = Japannext turnover / All Japan Turnover.
- ▶ Price Improvement (PI) and Savings (PI\*volume) are calculated by comparing the execution price against the primary market's best bid for each sell or best offer for each buy at the point of execution from the taker's perspective. Reported PI is a value-weighted average. Names with weekly traded value less than 100,000,000 JPY are excluded from the rankings tables.