

# Market Report for the Week of June 05, 2017

## Daily Averages

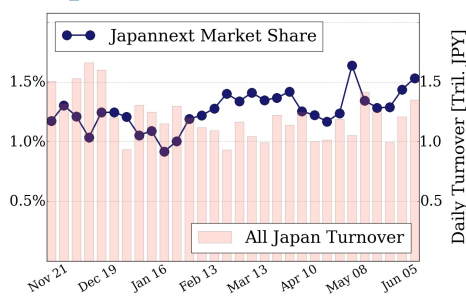
Universe	Value (JPY)	Volume	Share	PI (bps)	Symbols
All Market	118,887,279,469	127,177,829	3.76 %	5.28	2289
Large Cap	20,670,985,186	12,570,560	1.53 %	1.41	100
Mid Cap	67,686,619,390	67,876,700	7.15 %	5.25	397
Small Cap	16,941,892,990	33,391,300	3.74 %	8.15	1244
Mothers & Jasdaq	8,386,999,968	12,142,700	3.62 %	11.38	461
ETFs & REITs	5,200,781,935	1,196,569	2.87 %	3.37	87

All Market  
**3.8 %**

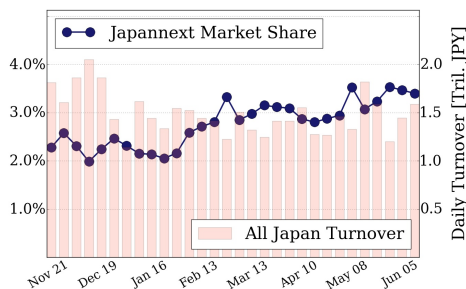
Topix 100  
**1.5 %**

Nikkei 225  
**3.4 %**

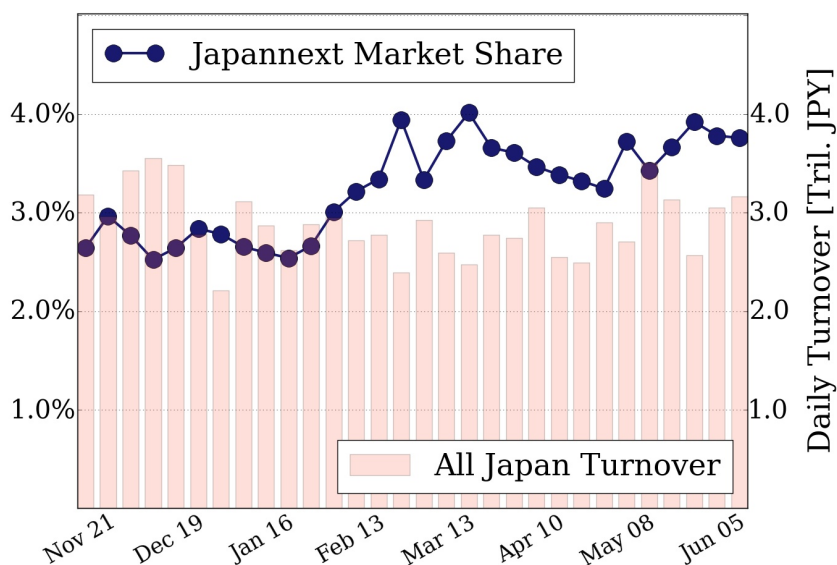
### Topix 100



### Nikkei 225



### All Market



### Top Stocks by Turnover

Stock	Value (JPY)	Share	PI (bps)
1570 NIKKEILV	9,090,389,924	1.89%	1.95
7974 NINTEND	7,084,806,500	1.23%	2.06
6098 RECRUIT	7,061,614,400	11.30%	5.97
9766 KONAMIHD	6,454,296,200	10.84%	5.55
3825 REMIX	6,001,670,450	5.91%	10.76

### Top Stocks by Market Share

Stock	Value (JPY)	Share	PI (bps)
3002 GUNZE	892,118,400	25.80%	8.01
8840 DAIKYO	487,422,900	20.60%	15.54
9104 MTI-OSK	4,605,717,900	20.54%	10.12
8303 SHINSEI	3,957,738,000	20.42%	17.19
8020 KANEMTU	482,706,000	19.50%	14.85

### Top Stocks by Price Improvement

Stock	Value (JPY)	Share	PI (bps)
5721 S-SCIEN	186,569,830	9.64%	159.10
6628 ONKYO	144,795,490	3.64%	70.35
3113 OAK	116,383,040	3.70%	48.81
1552 VIXSHORT	215,531,304	6.01%	46.64
7859 ALMEDIO	131,161,580	3.42%	41.69

### Top Stocks by Savings

Stock	Value (JPY)	Share	Savings
8303 SHINSEI	3,957,738,000	20.42%	5,327,900
9101 NYKLIN	3,534,860,300	16.74%	4,464,400
9104 MTI-OSK	4,605,717,900	20.54%	3,596,100
6098 RECRUIT	7,061,614,400	11.30%	3,000,500
7012 KHI	3,866,476,700	17.30%	2,738,100

- ▶ Analysis is based on SBI Japannext and Thomson Reuters data. Large Cap = TPX100, Mid Cap = TPX500 excl. TPX100, Small Cap = Section1 + Section2 excl. TPX500.
- ▶ All Japan Turnover = Japannext (J+X+U+N) + TSE (excl. Tostnet) + Chi-X (excl. Chi-Match, Chi-Select). Market Share = Japannext turnover / All Japan Turnover.
- ▶ Price Improvement (PI) and Savings (PI\*volume) are calculated by comparing the execution price against the primary market's best bid for each sell or best offer for each buy at the point of execution from the taker's perspective. Reported PI is a value-weighted average. Names with weekly traded value less than 100,000,000 JPY are excluded from the rankings tables.