

Market Report for the Week of June 19, 2017

Daily Averages

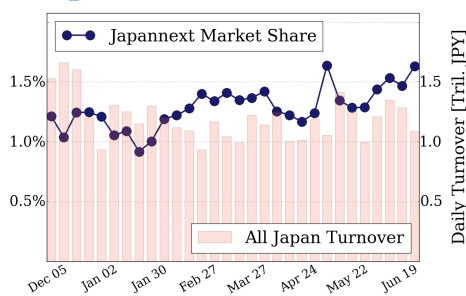
Universe	Value (JPY)	Volume	Share	PI (bps)	Symbols
All Market	107,422,457,032	122,175,250	3.89 %	5.33	2320
Large Cap	17,715,856,704	10,649,800	1.63 %	1.42	100
Mid Cap	56,529,899,862	56,726,360	7.29 %	5.30	396
Small Cap	18,800,368,530	36,136,520	3.88 %	7.40	1255
Mothers & Jasdaq	10,758,043,902	17,664,740	4.04 %	10.57	480
ETFs & REITs	3,618,288,034	997,830	2.40 %	3.01	89

All Market
3.9 %

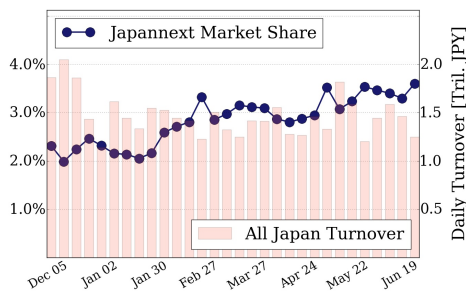
Topix 100
1.6 %

Nikkei 225
3.6 %

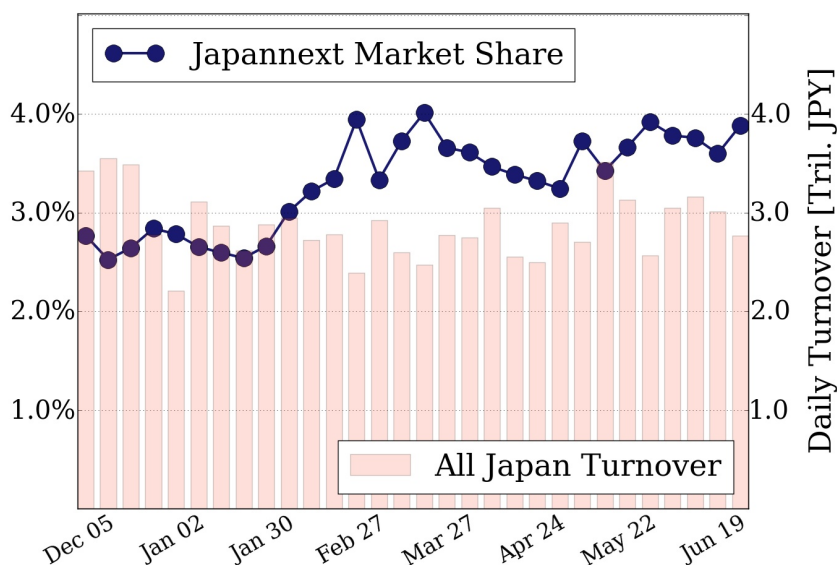
Topix 100



Nikkei 225



All Market



Top Stocks by Turnover

Stock	Value (JPY)	Share	PI (bps)
4689 YAHOO J	8,172,743,130	14.48%	6.82
6753 SHARP	8,097,238,400	9.45%	7.35
7974 NINTEND	6,381,529,500	1.08%	1.75
3825 REMIX	6,237,580,570	8.29%	7.04
1570 NIKKEILV	5,395,719,310	1.32%	1.28

Top Stocks by Market Share

Stock	Value (JPY)	Share	PI (bps)
3002 GUNZE	487,151,300	23.30%	8.85
8303 SHINSEI	2,560,128,600	22.01%	19.13
8840 DAIKYO	272,424,700	19.65%	16.03
6330 TOYOENG	367,587,400	19.17%	11.61
5703 NLM HD	893,461,590	18.96%	15.36

Top Stocks by Price Improvement

Stock	Value (JPY)	Share	PI (bps)
5856 TORI HD	237,294,120	5.97%	111.27
2315 CAICA	253,014,000	9.88%	61.82
6347 PLACO	136,376,000	5.64%	56.25
5721 S-SCIEN	1,334,451,890	9.82%	51.42
3103 UNITIKA	141,644,500	5.60%	44.75

Top Stocks by Savings

Stock	Value (JPY)	Share	Savings
9101 NYKLINE	3,531,255,100	15.89%	4,879,500
8303 SHINSEI	2,560,128,600	22.01%	4,236,700
4689 YAHOO J	8,172,743,130	14.48%	4,046,790
9104 MTI-OSK	4,132,838,600	18.65%	3,642,500
6753 SHARP	8,097,238,400	9.45%	2,939,700

- ▶ Analysis is based on SBI Japannext and Thomson Reuters data. Large Cap = TPX100, Mid Cap = TPX500 excl. TPX100, Small Cap = Section1 + Section2 excl. TPX500.
- ▶ All Japan Turnover = Japannext (J+X+U+N) + TSE (excl. Tostnet) + Chi-X (excl. Chi-Match, Chi-Select). Market Share = Japannext turnover / All Japan Turnover.
- ▶ Price Improvement (PI) and Savings (PI*volume) are calculated by comparing the execution price against the primary market's best bid for each sell or best offer for each buy at the point of execution from the taker's perspective. Reported PI is a value-weighted average. Names with weekly traded value less than 100,000,000 JPY are excluded from the rankings tables.