

Market Report for the Week of June 26, 2017

Daily Averages

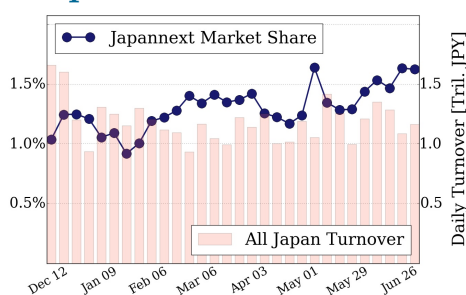
Universe	Value (JPY)	Volume	Share	PI (bps)	Symbols
All Market	110,784,390,782	127,955,579	3.89 %	5.23	2330
Large Cap	18,876,688,242	12,962,600	1.62 %	1.39	100
Mid Cap	59,024,533,886	60,153,280	7.21 %	5.24	398
Small Cap	18,629,979,824	34,676,300	4.09 %	7.19	1270
Mothers & Jasdq	9,856,499,390	19,067,640	3.90 %	9.64	477
ETFs & REITs	4,396,689,440	1,095,759	2.81 %	3.49	86

All Market
3.9 %

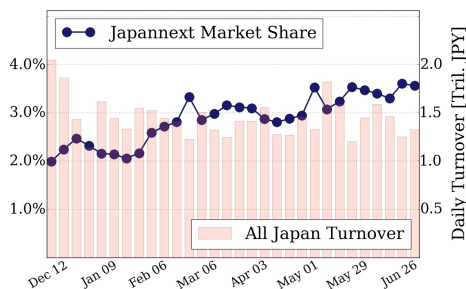
Topix 100
1.6 %

Nikkei 225
3.6 %

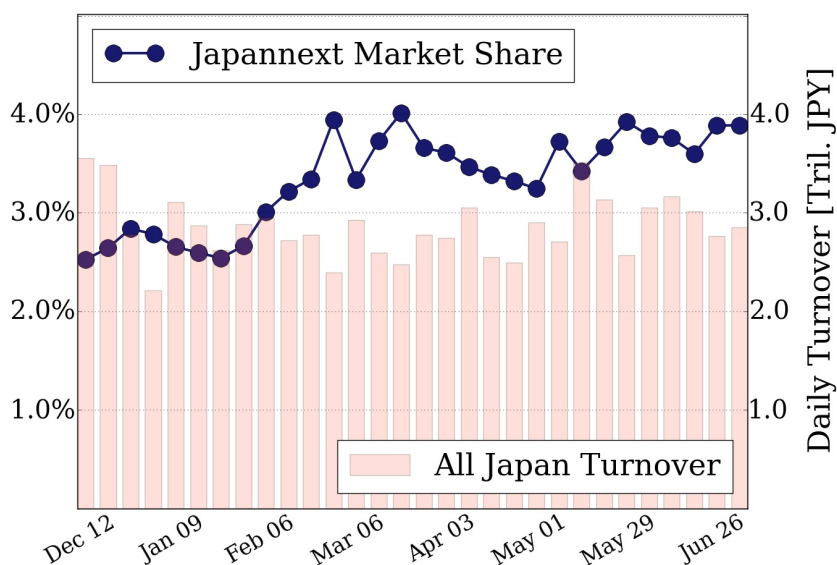
Topix 100



Nikkei 225



All Market



Top Stocks by Turnover

Stock	Value (JPY)	Share	PI (bps)
7974 NINTEND	8,752,664,500	1.19%	1.65
1570 NIKKEILV	6,784,934,185	1.74%	1.26
4689 YAHOO J	5,772,167,020	15.44%	6.70
6762 TDK	4,516,261,100	12.80%	4.35
5233 PC CEMT	4,499,917,500	14.63%	8.97

Top Stocks by Market Share

Stock	Value (JPY)	Share	PI (bps)
2587 SUNTRYBF	3,392,552,500	22.58%	7.25
3002 GUNZE	650,657,400	20.85%	7.74
8952 JRE	2,092,774,100	19.48%	5.30
8303 SHINSEI	3,961,876,100	19.46%	17.75
7276 KOITO	1,853,546,300	19.05%	6.64

Top Stocks by Price Improvement

Stock	Value (JPY)	Share	PI (bps)
7312 TAKATA	179,109,410	4.45%	81.25
2315 CAICA	154,952,600	11.01%	58.78
7746 OKAGLAS	111,411,270	1.79%	55.35
6347 PLACO	103,873,000	3.61%	50.29
1552 VIXSHORT	233,760,975	4.95%	48.30

Top Stocks by Savings

Stock	Value (JPY)	Share	Savings
8303 SHINSEI	3,961,876,100	19.46%	5,642,800
9101 NYKLINE	3,468,821,600	17.87%	5,081,300
5233 PC CEMT	4,499,917,500	14.63%	2,974,700
4689 YAHOO J	5,772,167,020	15.44%	2,813,330
9104 MTI-OSK	3,056,827,700	18.09%	2,742,700

- ▶ Analysis is based on SBI Japannext and Thomson Reuters data. Large Cap = TPX100, Mid Cap = TPX500 excl. TPX100, Small Cap = Section1 + Section2 excl. TPX500.
- ▶ All Japan Turnover = Japannext (J+X+U+N) + TSE (excl. Tostnet) + Chi-X (excl. Chi-Match, Chi-Select). Market Share = Japannext turnover / All Japan Turnover.
- ▶ Price Improvement (PI) and Savings (PI*volume) are calculated by comparing the execution price against the primary market's best bid for each sell or best offer for each buy at the point of execution from the taker's perspective. Reported PI is a value-weighted average. Names with weekly traded value less than 100,000,000 JPY are excluded from the rankings tables.