

# Market Report for the Week of July 03, 2017

## Daily Averages

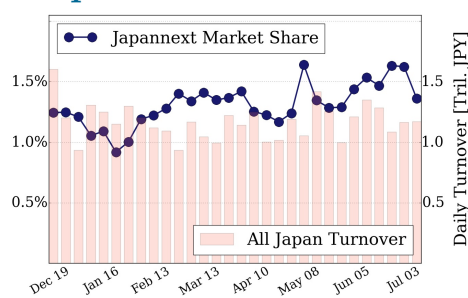
Universe	Value (JPY)	Volume	Share	PI (bps)	Symbols
All Market	103,911,805,635	125,737,963	3.55 %	5.39	2326
Large Cap	15,909,655,354	8,941,420	1.36 %	1.38	100
Mid Cap	54,556,004,610	53,607,140	6.45 %	5.10	398
Small Cap	18,888,617,300	40,581,060	3.97 %	7.86	1267
Mothers & Jasdaq	10,390,592,012	21,311,020	3.97 %	10.59	473
ETFs & REITs	4,166,936,359	1,297,323	2.38 %	3.54	87

All Market  
**3.5 %**

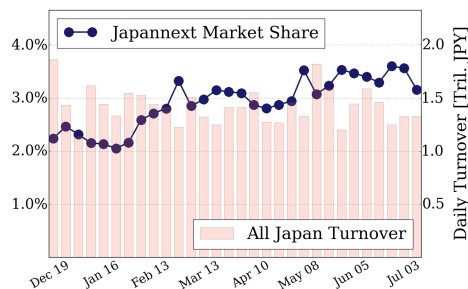
Topix 100  
**1.4 %**

Nikkei 225  
**3.2 %**

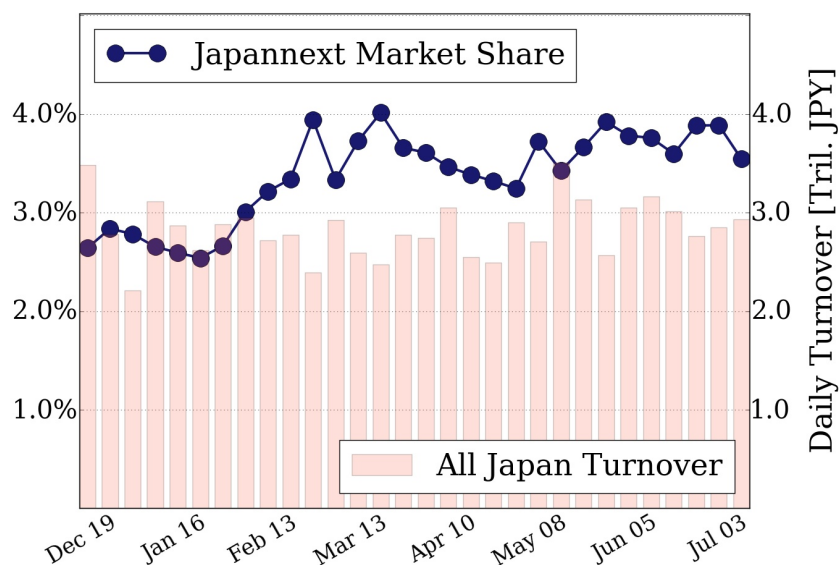
### Topix 100



### Nikkei 225



### All Market



### Top Stocks by Turnover

Stock	Value (JPY)	Share	PI (bps)
1570 NIKKEILV	7,023,168,873	1.63%	1.09
7974 NINTEND	6,942,363,000	0.86%	2.16
8704 TRADERS	6,804,422,570	6.44%	10.33
4689 YAHOO J	4,196,581,700	11.38%	6.82
9104 MTI-OSK	4,159,182,600	17.88%	10.33

### Top Stocks by Market Share

Stock	Value (JPY)	Share	PI (bps)
4316 BEMAP	323,955,700	48.02%	0.00
8840 DAIKYO	512,589,500	19.32%	16.56
8303 SHINSEI	2,137,868,000	19.17%	17.01
3002 GUNZE	307,633,900	18.79%	7.55
7003 MTI-E&S	946,887,100	18.61%	23.49

### Top Stocks by Price Improvement

Stock	Value (JPY)	Share	PI (bps)
8918 LAND	132,690,540	10.88%	276.31
7312 TAKATA	149,008,780	7.58%	117.37
5856 TORI HD	200,055,200	8.16%	65.99
5940 FUJSASH	101,693,010	2.42%	53.22
6347 PLACO	212,202,500	5.28%	51.17

### Top Stocks by Savings

Stock	Value (JPY)	Share	Savings
9101 NYKLINE	3,650,058,900	13.57%	4,921,600
9104 MTI-OSK	4,159,182,600	17.88%	3,309,900
8303 SHINSEI	2,137,868,000	19.17%	2,901,700
4208 UBE IND	2,651,283,400	14.52%	2,399,300
7012 KHI	2,925,757,400	13.55%	2,265,600

- ▶ Analysis is based on SBI Japannext and Thomson Reuters data. Large Cap = TPX100, Mid Cap = TPX500 excl. TPX100, Small Cap = Section1 + Section2 excl. TPX500.
- ▶ All Japan Turnover = Japannext (J+X+U+N) + TSE (excl. Tostnet) + Chi-X (excl. Chi-Match, Chi-Select).  
Market Share = Japannext turnover / All Japan Turnover.
- ▶ Price Improvement (PI) and Savings (PI\*volume) are calculated by comparing the execution price against the primary market's best bid for each sell or best offer for each buy at the point of execution from the taker's perspective. Reported PI is a value-weighted average. Names with weekly traded value less than 100,000,000 JPY are excluded from the rankings tables.