

Market Report for the Week of July 10, 2017

Daily Averages

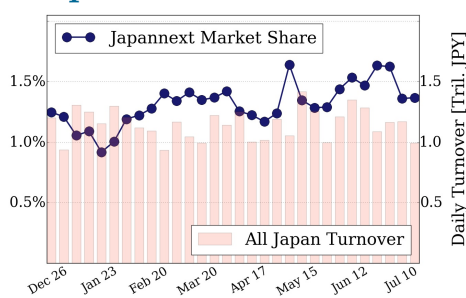
Universe	Value (JPY)	Volume	Share	PI (bps)	Symbols
All Market	88,849,839,874	113,696,383	3.49 %	5.48	2299
Large Cap	13,563,740,278	8,616,500	1.37 %	1.31	100
Mid Cap	47,298,897,560	44,730,060	6.25 %	5.05	396
Small Cap	15,847,297,434	43,190,560	3.69 %	9.64	1249
Mothers & Jasdaq	8,430,957,728	16,329,760	3.77 %	9.49	466
ETFs & REITs	3,708,946,874	829,503	2.57 %	3.29	89

All Market
3.5 %

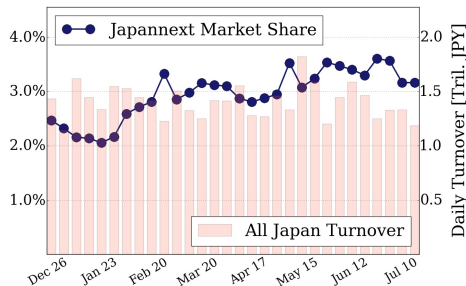
Topix 100
1.4 %

Nikkei 225
3.2 %

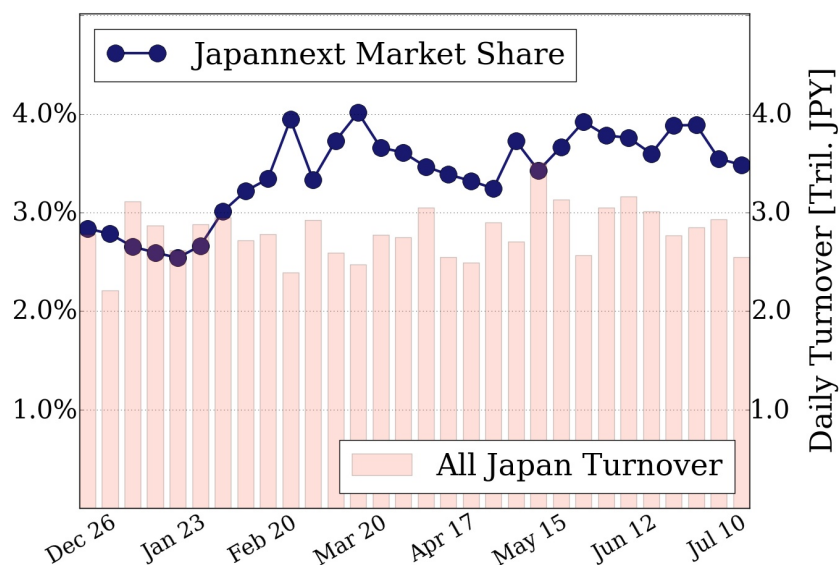
Topix 100



Nikkei 225



All Market



Top Stocks by Turnover

Stock	Value (JPY)	Share	PI (bps)
4324 DENTSU	4,657,370,000	13.57%	7.30
1570 NIKKEILV	4,635,820,097	1.36%	1.12
9104 MTI-OSK	4,023,615,100	13.85%	10.07
8704 TRADERS	4,022,943,140	9.67%	7.91
7974 NINTEND	3,971,428,000	0.79%	1.80

Top Stocks by Market Share

Stock	Value (JPY)	Share	PI (bps)
3002 GUNZE	260,135,700	19.61%	8.23
8303 SHINSEI	1,982,843,600	18.27%	18.59
2206 E-GLICO	1,528,454,300	17.89%	6.18
7003 MTI-E&S	623,582,200	17.46%	25.30
8840 DAIKYO	267,405,900	17.20%	15.81

Top Stocks by Price Improvement

Stock	Value (JPY)	Share	PI (bps)
8107 KIMRTAN	109,724,800	4.35%	817.05
8918 LAND	741,447,540	14.33%	196.12
6775 TB GROUP	587,952,100	5.20%	113.39
5856 TORI HD	556,517,810	8.08%	73.68
2315 CAICA	122,839,130	11.85%	60.89

Top Stocks by Savings

Stock	Value (JPY)	Share	Savings
8918 LAND	741,447,540	14.33%	6,271,240
8107 KIMRTAN	109,724,800	4.35%	5,819,600
9101 NYKLINE	3,962,044,000	12.10%	4,883,400
9104 MTI-OSK	4,023,615,100	13.85%	3,283,000
8303 SHINSEI	1,982,843,600	18.27%	3,090,000

- ▶ Analysis is based on SBI Japannext and Thomson Reuters data. Large Cap = TPX100, Mid Cap = TPX500 excl. TPX100, Small Cap = Section1 + Section2 excl. TPX500.
- ▶ All Japan Turnover = Japannext (J+X+U+N) + TSE (excl. Tostnet) + Chi-X (excl. Chi-Match, Chi-Select). Market Share = Japannext turnover / All Japan Turnover.
- ▶ Price Improvement (PI) and Savings (PI*volume) are calculated by comparing the execution price against the primary market's best bid for each sell or best offer for each buy at the point of execution from the taker's perspective. Reported PI is a value-weighted average. Names with weekly traded value less than 100,000,000 JPY are excluded from the rankings tables.