

Market Report for the Week of August 14, 2017

Daily Averages

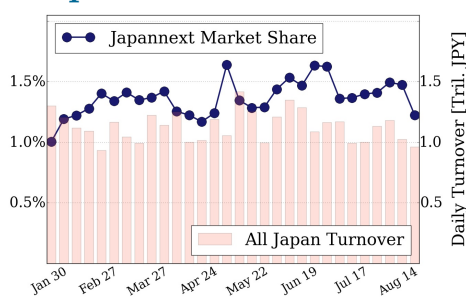
| Universe | Value (JPY) | Volume | Share | PI (bps) | Symbols |
|------------------|----------------|-------------|--------|----------|---------|
| All Market | 87,880,527,974 | 105,632,920 | 3.35 % | 5.57 | 2344 |
| Large Cap | 11,740,776,462 | 7,429,560 | 1.22 % | 1.34 | 99 |
| Mid Cap | 50,266,458,262 | 46,849,400 | 5.92 % | 5.19 | 396 |
| Small Cap | 16,028,096,352 | 40,251,000 | 3.40 % | 9.16 | 1271 |
| Mothers & Jasdaq | 5,460,316,288 | 9,016,260 | 3.04 % | 10.43 | 493 |
| ETFs & REITs | 4,384,880,610 | 2,086,700 | 2.77 % | 3.96 | 85 |

All Market
3.4 %

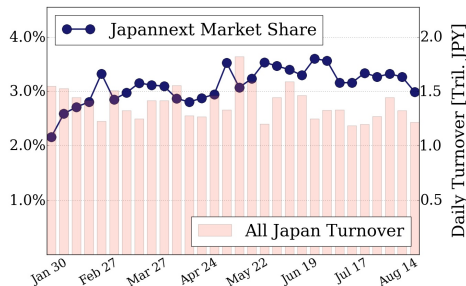
Topix 100
1.2 %

Nikkei 225
3.0 %

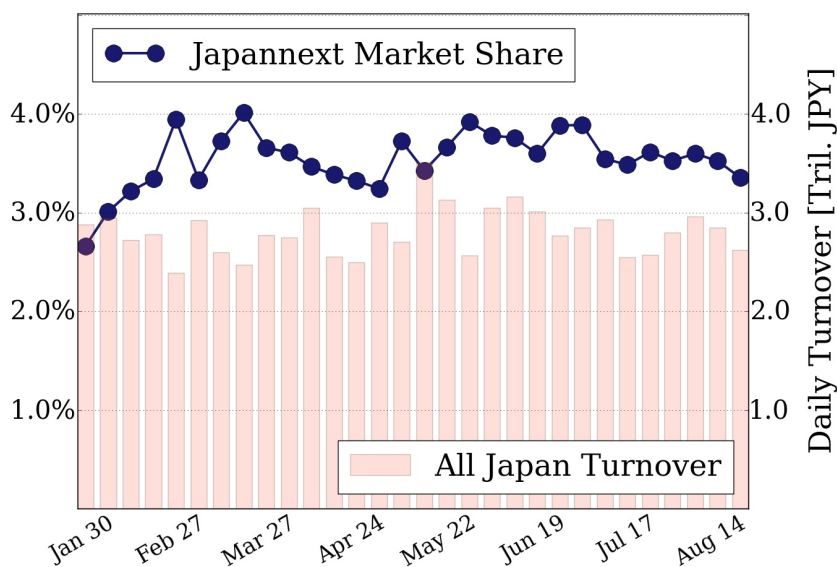
Topix 100



Nikkei 225



All Market



Top Stocks by Turnover

| Stock | Value (JPY) | Share | PI (bps) |
|---------------|---------------|--------|----------|
| 1570 NIKKEILV | 7,504,028,287 | 2.03% | 1.49 |
| 4689 YAHOO J | 6,069,486,130 | 17.06% | 7.20 |
| 6753 SHARP | 4,190,379,600 | 12.87% | 7.83 |
| 6762 TDK | 4,062,551,200 | 10.23% | 4.44 |
| 1357 NKDOUBLE | 4,005,283,372 | 3.81% | 1.34 |

Top Stocks by Market Share

| Stock | Value (JPY) | Share | PI (bps) |
|--------------|---------------|--------|----------|
| 8918 LAND | 108,048,720 | 17.21% | 273.89 |
| 4689 YAHOO J | 6,069,486,130 | 17.06% | 7.20 |
| 3002 GUNZE | 336,489,600 | 17.00% | 6.16 |
| 8840 DAIKYO | 395,610,900 | 15.74% | 16.19 |
| 2337 ICHIGO | 649,274,580 | 15.66% | 9.95 |

Top Stocks by Price Improvement

| Stock | Value (JPY) | Share | PI (bps) |
|---------------|-------------|--------|----------|
| 8918 LAND | 108,048,720 | 17.21% | 273.89 |
| 6397 GO IRON | 100,361,800 | 5.58% | 115.21 |
| 9318 ASIADAVE | 931,342,370 | 10.95% | 113.04 |
| 2315 CAICA | 397,908,150 | 9.54% | 46.76 |
| 1552 VIXSHORT | 576,568,707 | 7.39% | 44.53 |

Top Stocks by Savings

| Stock | Value (JPY) | Share | Savings |
|---------------|---------------|--------|-----------|
| 9101 NYKLINE | 3,467,451,800 | 12.21% | 5,075,900 |
| 9318 ASIADAVE | 931,342,370 | 10.95% | 4,910,300 |
| 4689 YAHOO J | 6,069,486,130 | 17.06% | 3,564,340 |
| 8303 SHINSEI | 1,373,195,300 | 14.97% | 2,581,900 |
| 8918 LAND | 108,048,720 | 17.21% | 2,341,900 |

- ▶ Analysis is based on SBI Japannext and Thomson Reuters data. Large Cap = TPX100, Mid Cap = TPX500 excl. TPX100, Small Cap = Section1 + Section2 excl. TPX500.
- ▶ All Japan Turnover = Japannext (J+X+U+N) + TSE (excl. Tostnet) + Chi-X (excl. Chi-Match, Chi-Select).
Market Share = Japannext turnover / All Japan Turnover.
- ▶ Price Improvement (PI) and Savings (PI*volume) are calculated by comparing the execution price against the primary market's best bid for each sell or best offer for each buy at the point of execution from the taker's perspective. Reported PI is a value-weighted average. Names with weekly traded value less than 100,000,000 JPY are excluded from the rankings tables.