

Market Report for the Week of September 04, 2017

Daily Averages

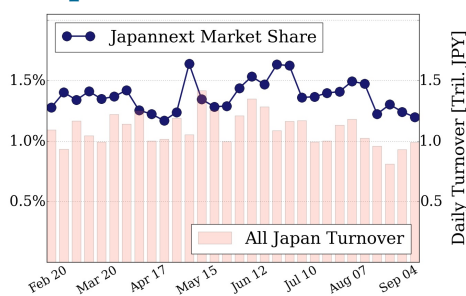
Universe	Value (JPY)	Volume	Share	PI (bps)	Symbols
All Market	73,127,806,688	95,926,381	2.79 %	5.94	2390
Large Cap	11,859,429,324	7,049,900	1.20 %	1.34	99
Mid Cap	37,243,421,624	37,230,340	4.55 %	5.26	397
Small Cap	14,982,736,732	39,959,760	3.07 %	10.44	1309
Mothers & Jasdag	4,877,557,580	9,535,300	2.86 %	12.66	502
ETFs & REITs	4,164,661,428	2,151,081	2.68 %	4.49	83

All Market
2.8 %

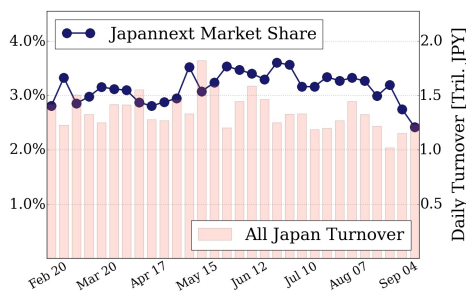
Topix 100
1.2 %

Nikkei 225
2.4 %

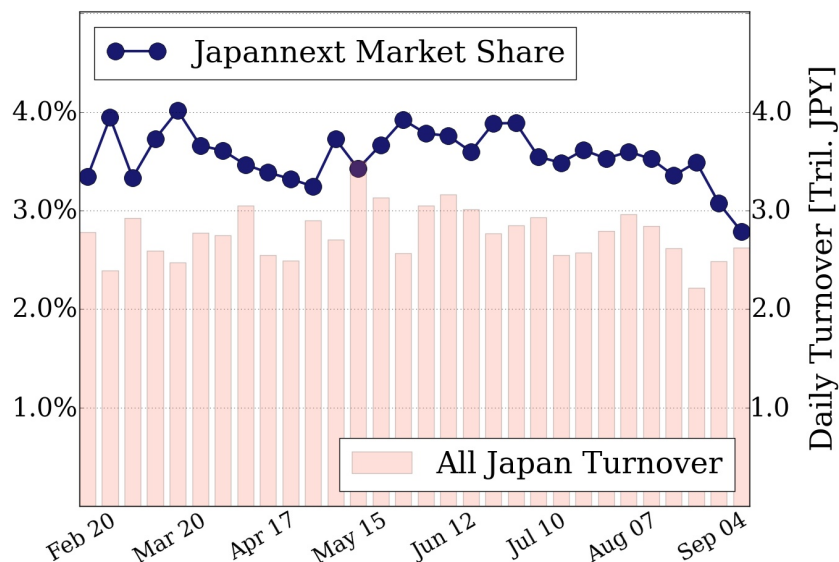
Topix 100



Nikkei 225



All Market



Top Stocks by Turnover

Stock	Value (JPY)	Share	PI (bps)
1570 NIKKEILV	5,657,618,745	1.59%	1.72
6502 TOSHIBA	5,003,233,800	13.84%	10.01
6753 SHARP	4,678,915,500	7.91%	6.84
1357 NKDOUBLE	4,672,765,417	3.74%	1.84
4689 YAHOO J	3,074,361,870	10.31%	6.85

Top Stocks by Market Share

Stock	Value (JPY)	Share	PI (bps)
7003 MTI-E&S	784,144,300	20.50%	32.59
8303 SHINSEI	1,488,574,500	17.02%	23.25
3002 GUNZE	356,313,000	14.84%	6.42
3323 RECOMM	122,849,810	14.15%	52.49
6502 TOSHIBA	5,003,233,800	13.84%	10.01

Top Stocks by Price Improvement

Stock	Value (JPY)	Share	PI (bps)
8107 KIMRTAN	111,811,800	5.48%	783.60
9318 ASIADVEVE	255,242,230	13.10%	280.92
6343 FREESIA	160,451,300	4.57%	106.17
3409 KNH-SPN	161,306,200	3.80%	69.67
3528 PROSPECT	251,929,400	10.70%	57.79

Top Stocks by Savings

Stock	Value (JPY)	Share	Savings
8107 KIMRTAN	111,811,800	5.48%	5,614,500
9318 ASIADVEVE	255,242,230	13.10%	4,238,050
6502 TOSHIBA	5,003,233,800	13.84%	3,536,500
9101 NYKLINE	2,081,893,100	9.61%	3,137,800
8303 SHINSEI	1,488,574,500	17.02%	3,004,400

- ▶ Analysis is based on SBI Japannext and Thomson Reuters data. Large Cap = TPX100, Mid Cap = TPX500 excl. TPX100, Small Cap = Section1 + Section2 excl. TPX500.
- ▶ All Japan Turnover = Japannext (J+X+U+N) + TSE (excl. Tostnet) + Chi-X (excl. Chi-Match, Chi-Select). Market Share = Japannext turnover / All Japan Turnover.
- ▶ Price Improvement (PI) and Savings (PI*volume) are calculated by comparing the execution price against the primary market's best bid for each sell or best offer for each buy at the point of execution from the taker's perspective. Reported PI is a value-weighted average. Names with weekly traded value less than 100,000,000 JPY are excluded from the rankings tables.