

Market Report for the Week of October 02, 2017

Daily Averages

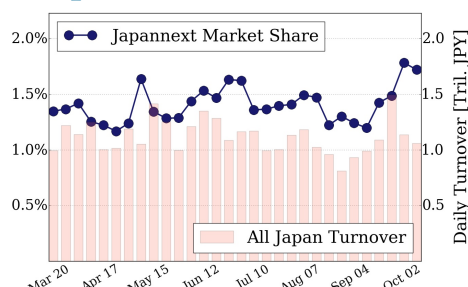
Universe	Value (JPY)	Volume	Share	PI (bps)	Symbols
All Market	93,163,090,146	78,229,147	3.40 %	4.34	2461
Large Cap	18,224,446,172	9,190,820	1.72 %	1.21	99
Mid Cap	47,426,469,156	28,018,380	5.82 %	4.15	398
Small Cap	18,484,727,858	29,779,940	3.59 %	6.78	1365
Mothers & Jasdaq	5,405,122,076	10,661,340	2.86 %	10.76	509
ETFs & REITs	3,622,324,884	578,667	2.28 %	2.77	90

All Market
3.4 %

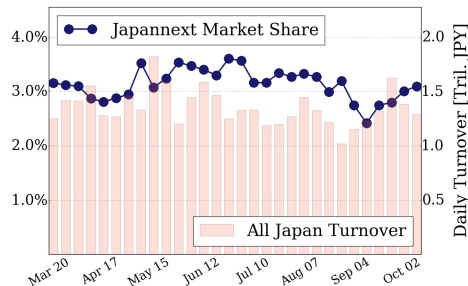
Topix 100
1.7 %

Nikkei 225
3.1 %

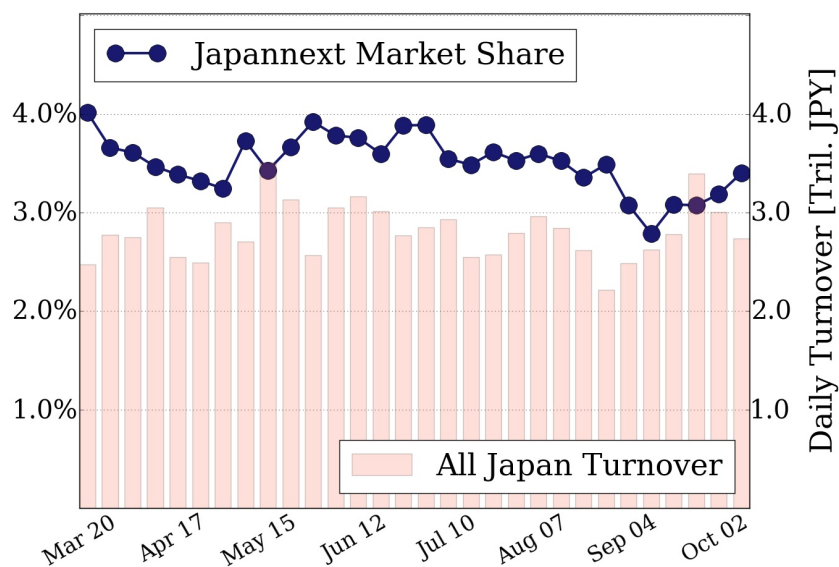
Topix 100



Nikkei 225



All Market



Top Stocks by Turnover

Stock	Value (JPY)	Share	PI (bps)
7201 NISSAN	8,384,008,050	4.01%	1.17
1570 NIKKEILV	5,087,283,914	1.36%	1.68
4689 YAHOO J	4,993,801,750	13.77%	6.28
6502 TOSHIBA	4,374,418,400	11.89%	10.47
7974 NINTEND	4,137,456,000	0.91%	1.47

Top Stocks by Market Share

Stock	Value (JPY)	Share	PI (bps)
5232 SMI-OSK	1,123,868,500	17.72%	7.31
1813 FUDO TTR	168,029,750	17.03%	16.79
8925 ARDEPRO	391,282,470	16.82%	30.49
8410 SEVEN BK	1,886,935,090	15.30%	7.52
4689 YAHOO J	4,993,801,750	13.77%	6.28

Top Stocks by Price Improvement

Stock	Value (JPY)	Share	PI (bps)
8918 LAND	119,775,220	5.55%	251.15
3528 PROSPECT	133,772,100	8.53%	88.26
3840 PATH	108,340,710	11.07%	47.77
2315 CAICA	828,088,770	6.83%	42.49
5721 S-SCIEN	106,829,420	11.52%	39.71

Top Stocks by Savings

Stock	Value (JPY)	Share	Savings
6502 TOSHIBA	4,374,418,400	11.89%	3,336,200
4689 YAHOO J	4,993,801,750	13.77%	2,508,050
8918 LAND	119,775,220	5.55%	1,861,910
2768 SOJITZ	2,200,700,790	12.73%	1,705,540
2315 CAICA	828,088,770	6.83%	1,690,330

- ▶ Analysis is based on SBI Japannext and Thomson Reuters data. Large Cap = TPX100, Mid Cap = TPX500 excl. TPX100, Small Cap = Section1 + Section2 excl. TPX500.
- ▶ All Japan Turnover = Japannext (J+X+U+N) + TSE (excl. Tostnet) + Chi-X (excl. Chi-Match, Chi-Select). Market Share = Japannext turnover / All Japan Turnover.
- ▶ Price Improvement (PI) and Savings (PI*volume) are calculated by comparing the execution price against the primary market's best bid for each sell or best offer for each buy at the point of execution from the taker's perspective. Reported PI is a value-weighted average. Names with weekly traded value less than 100,000,000 JPY are excluded from the rankings tables.