

# Market Report for the Week of October 09, 2017

## Daily Averages

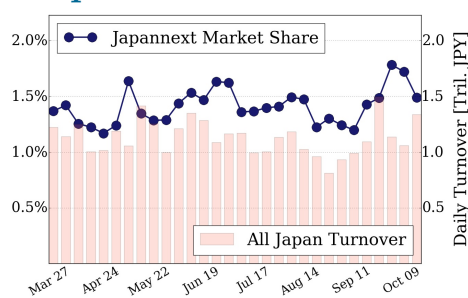
Universe	Value (JPY)	Volume	Share	PI (bps)	Symbols
All Market	99,960,767,111	84,441,285	3.06 %	4.33	2485
Large Cap	19,931,405,612	8,845,125	1.49 %	1.19	99
Mid Cap	50,638,118,062	29,961,900	5.00 %	3.96	398
Small Cap	19,119,116,137	34,940,025	3.59 %	7.44	1380
Mothers & Jasdaq	5,624,959,700	9,890,700	2.90 %	9.97	519
ETFs & REITs	4,647,167,599	803,535	2.48 %	2.81	89

All Market  
**3.1 %**

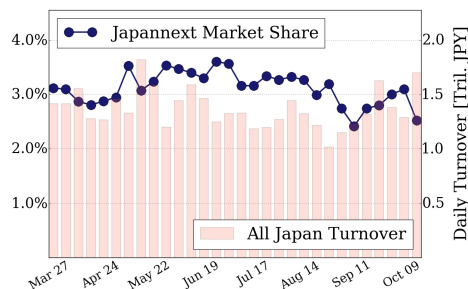
Topix 100  
**1.5 %**

Nikkei 225  
**2.5 %**

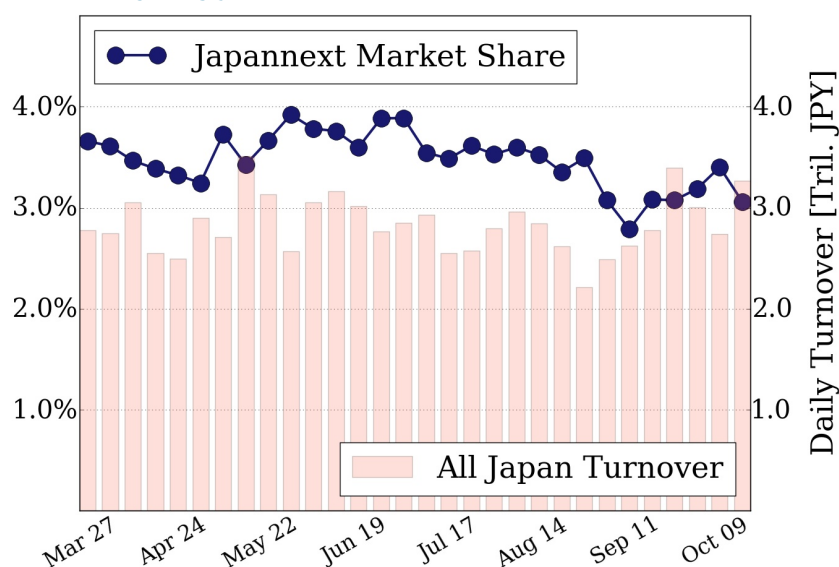
### Topix 100



### Nikkei 225



### All Market



## Top Stocks by Turnover

Stock	Value (JPY)	Share	PI (bps)
6502 TOSHIBA	6,455,024,900	11.14%	7.98
1570 NIKKEILV	5,405,486,985	1.59%	1.74
6178 JPPOSTHD	5,222,734,570	6.63%	1.42
5406 KOBESTL	5,209,013,030	1.46%	2.10
7974 NINTEND	4,966,831,000	1.20%	1.36

## Top Stocks by Market Share

Stock	Value (JPY)	Share	PI (bps)
8925 ARDEPRO	123,991,570	21.14%	31.43
3647 GTHREEHD	266,454,880	17.46%	8.77
4582 SYMBIO	114,244,810	17.28%	12.41
8918 LAND	363,320,670	16.33%	255.45
3390 INEST	120,371,050	15.90%	32.03

## Top Stocks by Price Improvement

Stock	Value (JPY)	Share	PI (bps)
9318 ASIADVEVE	137,372,070	13.87%	354.89
8918 LAND	363,320,670	16.33%	255.45
9127 TAMAI	179,732,900	2.81%	68.52
3528 PROSPECT	420,303,600	13.26%	50.66
2315 CAICA	489,801,160	15.82%	48.47

## Top Stocks by Savings

Stock	Value (JPY)	Share	Savings
8918 LAND	363,320,670	16.33%	5,517,020
6502 TOSHIBA	6,455,024,900	11.14%	3,525,500
6383 DAIFUKU	3,319,701,700	10.35%	1,604,300
6645 OMRON	3,412,623,900	11.30%	1,404,700
2768 SOJITZ	1,492,320,990	11.02%	1,380,800

- ▶ Analysis is based on SBI Japannext and Thomson Reuters data. Large Cap = TPX100, Mid Cap = TPX500 excl. TPX100, Small Cap = Section1 + Section2 excl. TPX500.
- ▶ All Japan Turnover = Japannext (J+X+U+N) + TSE (excl. Tostnet) + Chi-X (excl. Chi-Match, Chi-Select).  
Market Share = Japannext turnover / All Japan Turnover.
- ▶ Price Improvement (PI) and Savings (PI\*volume) are calculated by comparing the execution price against the primary market's best bid for each sell or best offer for each buy at the point of execution from the taker's perspective. Reported PI is a value-weighted average. Names with weekly traded value less than 100,000,000 JPY are excluded from the rankings tables.