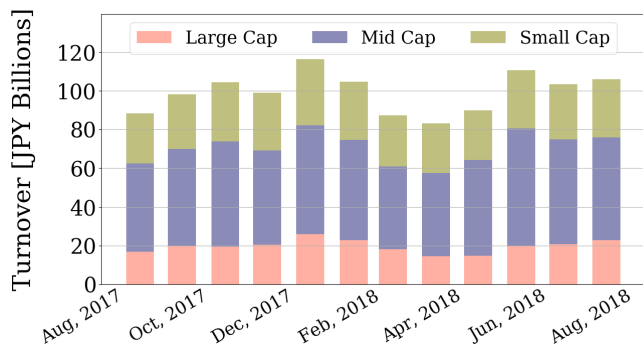


Market Report for August, 2018

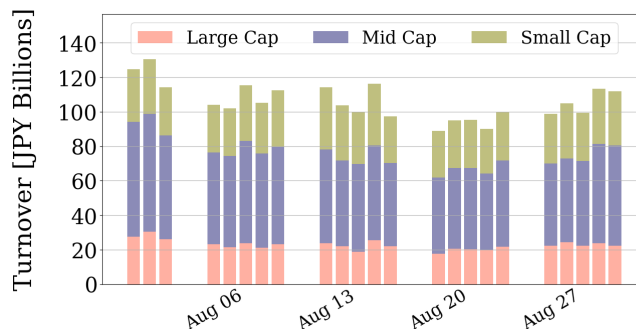
Trading Summary

Total Monthly Value (JPY)	2,436,232,321,007	Total Monthly Volume	1,793,943,506
Average Daily Value (JPY)	105,923,144,392	Average Daily Volume	77,997,544
Average PI (bps)	4.03	Average Traded Symbols	2786

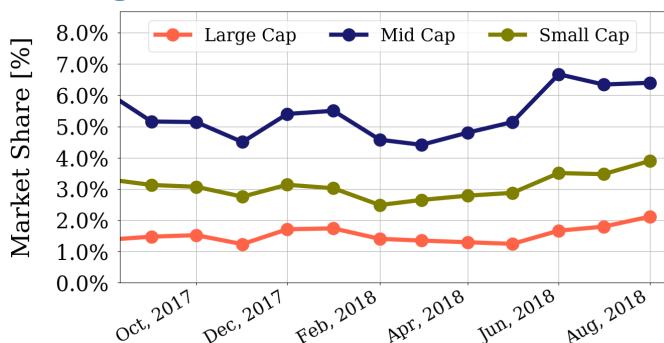
Average Daily Turnover



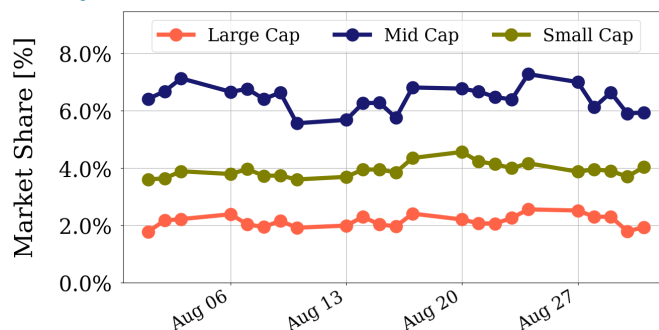
Daily Turnover



Average Market Share



Daily Market Share



Top Stocks by Turnover

Stock	Value (JPY)	Share	PI (bps)
1570 NIKKEILV	48,680,951,048	1.92%	0.89
4004 SHOWDEN	32,832,115,600	8.38%	5.30
1357 NKDOUBLE	30,832,095,895	6.37%	1.89
7974 NINTEND	25,447,534,000	1.44%	1.82
9984 SOFTBNKG	23,679,699,560	1.60%	1.45

Top Stocks by Market Share

Stock	Value (JPY)	Share	PI (bps)
3528 PROSPECT	614,114,800	19.86%	82.29
2768 SOJITZ	15,252,297,750	16.36%	9.18
6502 TOSHIBA	22,818,239,200	15.55%	10.56
4689 YAHOO J	22,378,548,600	15.17%	8.49
6472 NTN	6,804,671,450	14.93%	7.11

Top Stocks by Price Improvement

Stock	Value (JPY)	Share	PI (bps)
8918 LAND	453,676,760	9.33%	400.86
3528 PROSPECT	614,114,800	19.86%	82.29
6773 PIONEER	2,312,079,250	8.00%	22.04
4712 KEYH	475,249,700	9.02%	20.88
6740 JDI	7,668,922,830	13.93%	20.76

Top Stocks by Savings

Stock	Value (JPY)	Share	Savings
6502 TOSHIBA	22,818,239,200	15.55%	21,184,100
4689 YAHOO J	22,378,548,600	15.17%	16,610,640
4004 SHOWDEN	32,832,115,600	8.38%	13,850,900
8918 LAND	453,676,760	9.33%	13,201,620
6740 JDI	7,668,922,830	13.93%	12,109,190

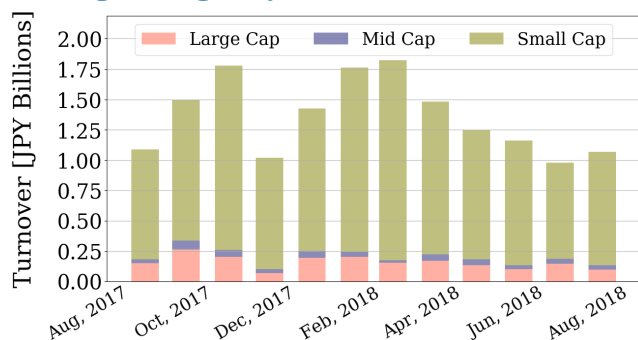
- ▶ Analysis is based on SBI Japannext and Thomson Reuters data. Large Cap = TPX100, Mid Cap = TPX500 excl. TPX100, Small Cap = All Names excl. TPX500.. All Japannext markets (J, X, U, and N) are included.
- ▶ Price Improvement (PI) and Savings (PI*volume) are calculated by comparing the execution price against the primary market's best bid for each sell or best offer for each buy at the point of execution from the taker's perspective. Reported PI is a value-weighted average. Names with monthly traded value less than 400,000,000 JPY are excluded from the rankings tables.

Night-Time Market Report for August, 2018

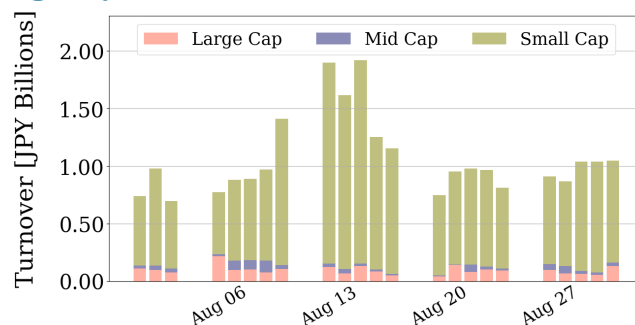
Trading Summary

Total Monthly Value (JPY)	24,537,478,354	Total Monthly Volume	23,950,547
Average Daily Value (JPY)	1,066,846,885	Average Daily Volume	1,041,328
Average Quoted Symbols	2193	Average Traded Symbols	222

Average Nightly Turnover



Nightly Turnover



Top Stocks by Turnover

Stock	Value (JPY)	Share
1570 NIKKEILV	5,734,523,094	0.23%
1357 NKDOUBLE	2,900,158,387	0.60%
6033 EXTREME	2,096,778,710	1.57%
3672 ALTPLUS	547,686,850	2.03%
9820 MTGENEX	532,777,300	2.56%
3664 MOBCASTH	499,432,060	0.61%
1579 225 BULL	453,678,040	0.35%
9984 SOFTBNKG	409,316,000	0.03%
7203 TOYOTA	300,375,300	0.04%
1552 VIXSHORT	226,121,827	1.97%
3825 REMIX	225,387,350	0.52%
7859 ALMEDIO	209,399,530	1.62%
3776 BB-TOWER	207,559,700	0.60%
5301 TOKAICA	198,814,790	0.04%
7974 NINTEND	177,230,000	0.01%

Top Stocks by Market Share

Stock	Value (JPY)	Share
3960 VALUEDES	83,477,340	11.51%
6356 NP-GEAR	19,589,910	9.47%
4336 CRIEANA	9,497,290	9.03%
5271 TOYOASA	8,700,000	4.15%
2762 SANKO MF	26,589,480	4.08%
7320 JPLIVING	22,789,600	3.30%
3185 DREAM VI	18,185,900	3.10%
7638 NEW ART	23,442,630	3.01%
5212 FUJIGLS	265,000	2.66%
9820 MTGENEX	532,777,300	2.56%
6038 IID	37,426,680	2.25%
3224 G OYSTER	6,232,050	2.20%
3672 ALTPLUS	547,686,850	2.03%
1552 VIXSHORT	226,121,827	1.97%
4664 RSC	28,306,760	1.96%

► Analysis is based on SBI Japannext and Thomson Reuters data. Large Cap = TPX100, Mid Cap = TPX500 excl. TPX100, Small Cap = All Names excl. TPX500. Only Night-Time market is included.