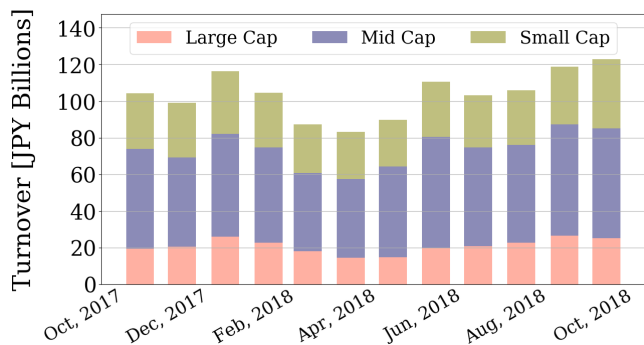


Market Report for October, 2018

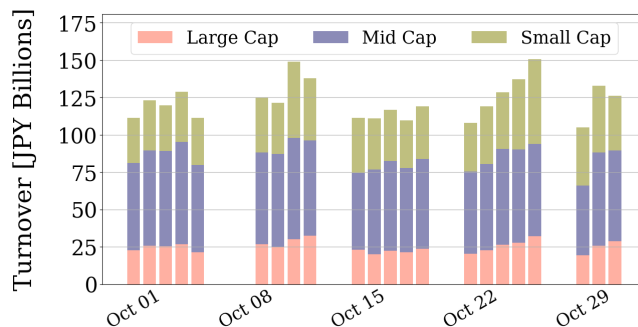
Trading Summary

Total Monthly Value (JPY)	2,703,293,459,010	Total Monthly Volume	1,960,123,932
Average Daily Value (JPY)	122,876,975,410	Average Daily Volume	89,096,542
Average PI (bps)	3.81	Average Traded Symbols	2839

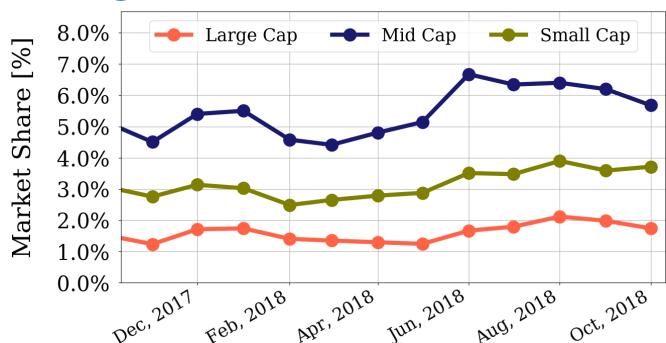
Average Daily Turnover



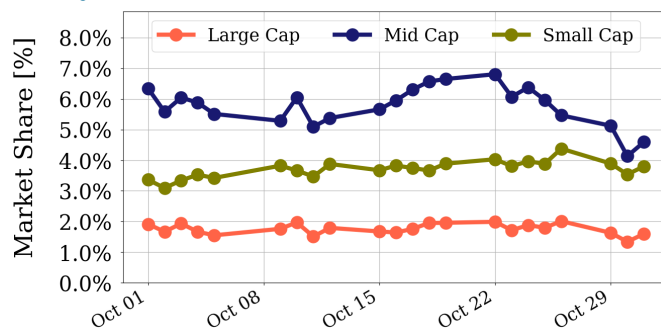
Daily Turnover



Average Market Share



Daily Market Share



Top Stocks by Turnover

Stock	Value (JPY)	Share	PI (bps)
1570 NIKKEILV	133,330,162,259	2.76%	0.90
1357 NKDOUBLE	53,246,204,919	5.69%	1.97
4689 YAHOO J	28,058,362,690	13.74%	8.50
4004 SHOWDEN	27,404,981,400	8.05%	4.67
9984 SOFTBNKG	27,134,452,200	1.22%	1.35

Top Stocks by Market Share

Stock	Value (JPY)	Share	PI (bps)
3528 PROSPECT	543,679,170	19.81%	82.77
8918 LAND	1,010,656,150	17.90%	378.15
2353 NP-PARK	509,732,530	16.23%	16.34
1365 DW 225LV	6,648,112,894	15.70%	2.26
7167 MEBUKIFG	5,747,613,100	15.64%	7.68

Top Stocks by Price Improvement

Stock	Value (JPY)	Share	PI (bps)
8918 LAND	1,010,656,150	17.90%	378.15
3528 PROSPECT	543,679,170	19.81%	82.77
2315 CAICA	612,502,290	12.36%	73.62
4398 BBSEC	489,317,280	0.74%	31.26
6740 JDI	6,458,795,800	15.33%	29.82

Top Stocks by Savings

Stock	Value (JPY)	Share	Savings
8918 LAND	1,010,656,150	17.90%	27,982,630
4689 YAHOO J	28,058,362,690	13.74%	20,404,660
6740 JDI	6,458,795,800	15.33%	15,159,810
2768 SOJITZ	18,087,721,090	14.78%	10,493,500
4751 CYBER A	20,347,149,000	9.41%	9,065,000

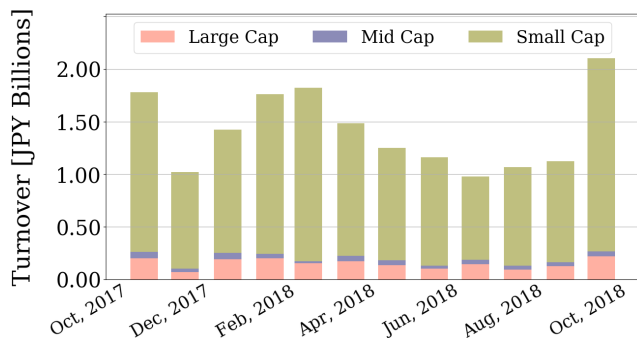
- ▶ Analysis is based on SBI Japannext and Thomson Reuters data. Large Cap = TPX100, Mid Cap = TPX500 excl. TPX100, Small Cap = All Names excl. TPX500.. All Japannext markets (J, X, U, and N) are included.
- ▶ Price Improvement (PI) and Savings (PI*volume) are calculated by comparing the execution price against the primary market's best bid for each sell or best offer for each buy at the point of execution from the taker's perspective. Reported PI is a value-weighted average. Names with monthly traded value less than 400,000,000 JPY are excluded from the rankings tables.

Night-Time Market Report for October, 2018

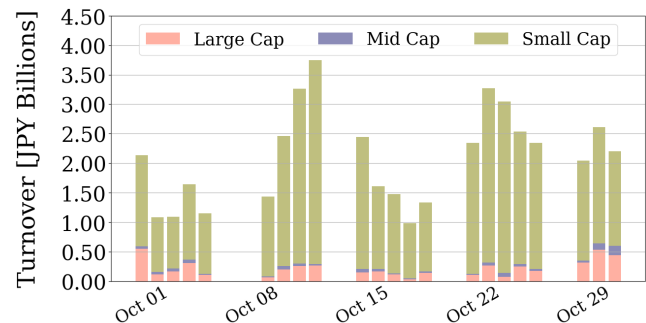
Trading Summary

Total Monthly Value (JPY)	46,250,728,471	Total Monthly Volume	44,601,435
Average Daily Value (JPY)	2,102,305,840	Average Daily Volume	2,027,338
Average Quoted Symbols	2265	Average Traded Symbols	260

Average Nightly Turnover



Nightly Turnover



Top Stocks by Turnover

Stock	Value (JPY)	Share
1570 NIKKEILV	16,753,555,128	0.35%
1357 NKDOUBLE	8,959,139,060	0.96%
9820 MTGENEX	1,180,845,700	3.18%
1579 225 BULL	973,595,640	0.36%
9984 SOFTBNKG	760,197,500	0.03%
3356 TERIOLOGY	742,426,170	0.54%
6758 SONY	723,650,900	0.06%
1552 VIXSHORT	563,573,018	2.31%
7039 BRIDGE	539,179,050	2.03%
4582 SYMBIO	526,200,360	0.47%
4528 ONOPHAM	455,670,660	0.20%
7203 TOYOTA	398,987,600	0.03%
2134 SUNCAPTL	393,235,040	0.59%
7974 NINTEND	387,586,500	0.03%
3627 NEOS	317,911,750	0.28%

Top Stocks by Market Share

Stock	Value (JPY)	Share
3910 MKSYSTEM	27,835,320	6.69%
9820 MTGENEX	1,180,845,700	3.18%
6064 ACTCALL	76,583,060	3.08%
7807 KOWA	27,578,670	2.99%
6663 TAIYOIND	21,066,210	2.94%
4293 SEPTENHD	102,181,890	2.79%
9903 KANSEKI	1,655,200	2.68%
9318 ASIADAVE	49,662,830	2.35%
1552 VIXSHORT	563,573,018	2.31%
1400 RUDEN	23,750,900	2.31%
6467 NICHIDI	86,057,830	2.21%
3461 PALMA	18,882,210	2.15%
4422 VALUENEX	232,048,100	2.14%
7039 BRIDGE	539,179,050	2.03%
7781 HIRAYAMA	14,355,500	1.98%

► Analysis is based on SBI Japannext and Thomson Reuters data. Large Cap = TPX100, Mid Cap = TPX500 excl. TPX100, Small Cap = All Names excl. TPX500. Only Night-Time market is included.