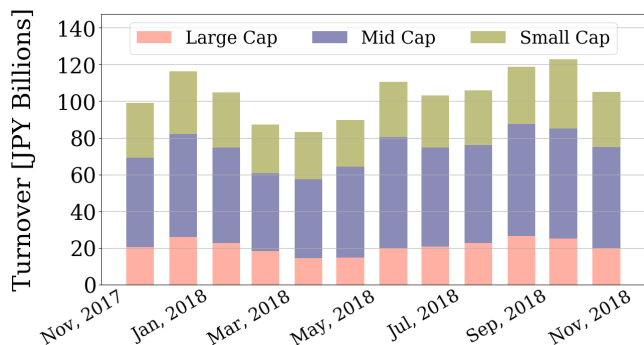


# Market Report for November, 2018

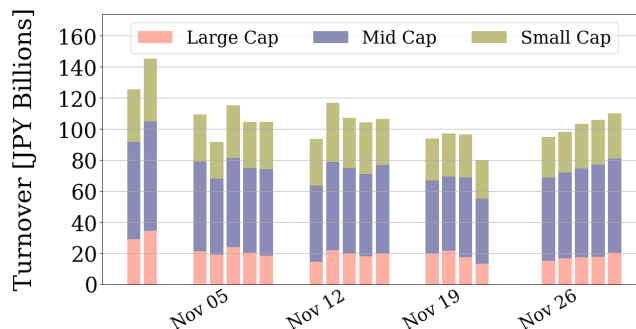
## Trading Summary

Total Monthly Value (JPY)	2,203,930,044,199	Total Monthly Volume	1,714,201,073
Average Daily Value (JPY)	104,949,049,724	Average Daily Volume	81,628,623
Average PI (bps)	3.97	Average Traded Symbols	2785

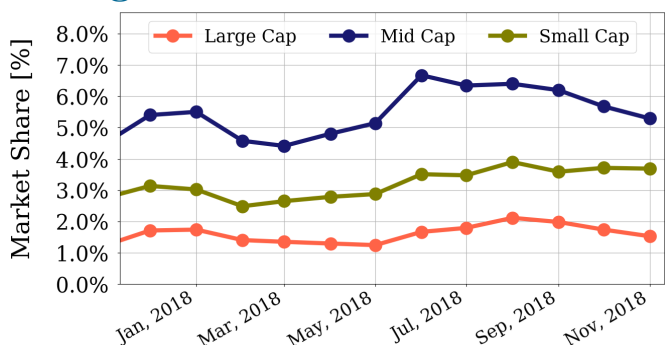
## Average Daily Turnover



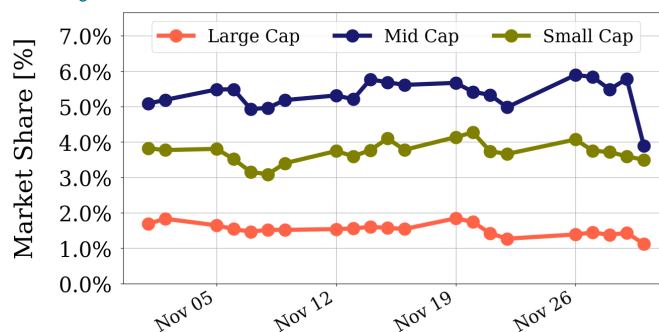
## Daily Turnover



## Average Market Share



## Daily Market Share



## Top Stocks by Turnover

Stock	Value (JPY)	Share	PI (bps)
1570 NIKKEILV	61,109,466,310	1.99%	1.19
6502 TOSHIBA	33,494,852,350	6.60%	3.54
1357 NKDOUBLE	29,174,033,439	4.64%	1.92
4689 YAHOO J	28,489,513,230	13.92%	9.99
4004 SHOWDEN	21,611,464,650	7.02%	4.32

## Top Stocks by Market Share

Stock	Value (JPY)	Share	PI (bps)
4924 CIZ HD	8,795,361,900	22.73%	5.90
8933 NTTURBAN	7,688,055,980	19.31%	1.72
7167 MEBUKIFG	6,167,473,180	17.67%	8.30
3528 PROSPECT	1,590,328,400	17.10%	131.57
8925 ARDEPRO	472,591,110	17.03%	46.54

## Top Stocks by Price Improvement

Stock	Value (JPY)	Share	PI (bps)
3528 PROSPECT	1,590,328,400	17.10%	131.57
3250 ADWORKS	573,626,120	0.71%	80.34
8925 ARDEPRO	472,591,110	17.03%	46.54
6740 JDI	6,040,954,780	13.68%	38.51
6773 PIONEER	1,331,547,800	14.93%	34.91

## Top Stocks by Savings

Stock	Value (JPY)	Share	Savings
4689 YAHOO J	28,489,513,230	13.92%	24,018,230
6740 JDI	6,040,954,780	13.68%	17,783,950
3528 PROSPECT	1,590,328,400	17.10%	13,787,770
2768 SOJITZ	16,874,832,790	13.59%	10,252,160
6502 TOSHIBA	33,494,852,350	6.60%	8,728,050

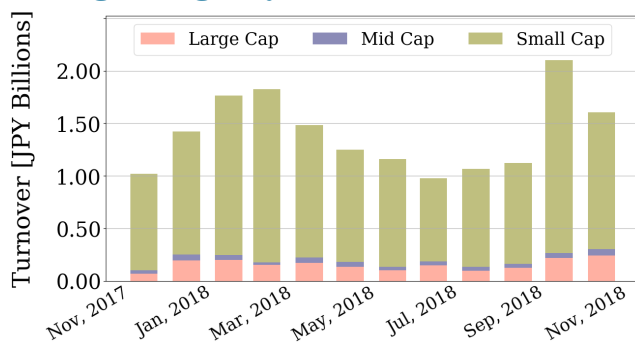
- ▶ Analysis is based on SBI Japannext and Thomson Reuters data. Large Cap = TPX100, Mid Cap = TPX500 excl. TPX100, Small Cap = All Names excl. TPX500.. All Japannext markets (J, X, U, and N) are included.
- ▶ Price Improvement (PI) and Savings (PI\*volume) are calculated by comparing the execution price against the primary market's best bid for each sell or best offer for each buy at the point of execution from the taker's perspective. Reported PI is a value-weighted average. Names with monthly traded value less than 400,000,000 JPY are excluded from the rankings tables.

# Night-Time Market Report for November, 2018

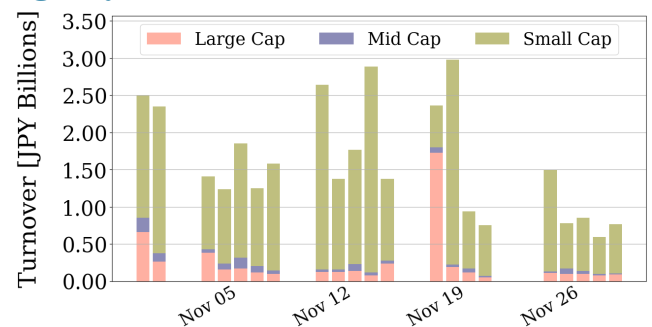
## Trading Summary

Total Monthly Value (JPY)	33,729,683,293	Total Monthly Volume	33,853,798
Average Daily Value (JPY)	1,606,175,395	Average Daily Volume	1,612,086
Average Quoted Symbols	2279	Average Traded Symbols	244

## Average Nightly Turnover



## Nightly Turnover



## Top Stocks by Turnover

Stock	Value (JPY)	Share
1570 NIKKEILV	10,415,404,253	0.34%
1357 NKDOUBLE	6,619,818,474	1.05%
7201 NISSAN	1,796,113,880	0.37%
1579 225 BULL	1,075,504,680	0.59%
4592 SANBIO	873,241,300	0.37%
9984 SOFTBNKG	792,846,000	0.04%
8789 FINTECH	384,597,350	1.10%
9433 KDDI	324,550,710	0.06%
3825 REMIX	269,762,710	1.72%
7203 TOYOTA	253,588,600	0.02%
7974 NINTEND	252,725,500	0.02%
1435 TATERU	251,242,610	0.56%
6758 SONY	247,166,100	0.03%
1458 RK 225LV	246,839,819	0.33%
4287 JUST PL	211,065,220	0.31%

## Top Stocks by Market Share

Stock	Value (JPY)	Share
4242 TAKAGISK	60,145,330	23.74%
6342 TAIHE M	4,680,000	15.07%
2892 NH-SHOK	1,139,400	9.76%
7809 KOTBKIYA	16,352,270	6.11%
1711 SDS HD	21,103,460	3.88%
3933 CHIERU	12,950,980	3.68%
7638 NEW ART	15,597,310	3.15%
9268 OPTIMUS	27,353,250	3.03%
7435 NADEX	6,784,170	3.01%
8209 FRIENDY	2,019,400	3.00%
2721 JHD	8,409,520	2.78%
4650 SD ENTER	9,246,180	2.66%
6303 SASAKRA	1,907,400	2.61%
3930 HATENA	15,936,400	2.60%
3140 IDEA INT	23,025,150	2.53%

► Analysis is based on SBI Japannext and Thomson Reuters data. Large Cap = TPX100, Mid Cap = TPX500 excl. TPX100, Small Cap = All Names excl. TPX500. Only Night-Time market is included.