

Market Report for the Week of January 15, 2018

Daily Averages

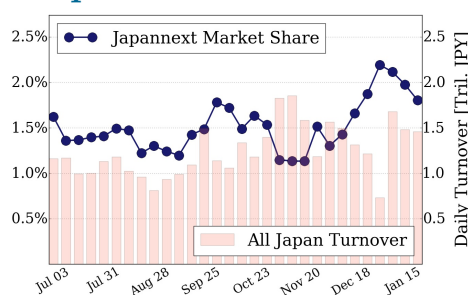
Universe	Value (JPY)	Volume	Share	PI (bps)	Symbols
All Market	116,566,964,708	88,363,100	3.25 %	3.89	2522
Large Cap	26,285,619,708	10,566,720	1.80 %	1.27	100
Mid Cap	55,552,101,300	27,286,980	5.63 %	3.79	400
Small Cap	20,689,251,464	36,467,720	3.42 %	6.43	1413
Mothers & Jasdaq	8,364,730,164	13,166,480	3.09 %	6.72	509
ETFs & REITs	5,675,262,072	875,200	2.12 %	1.73	100

All Market
3.2 %

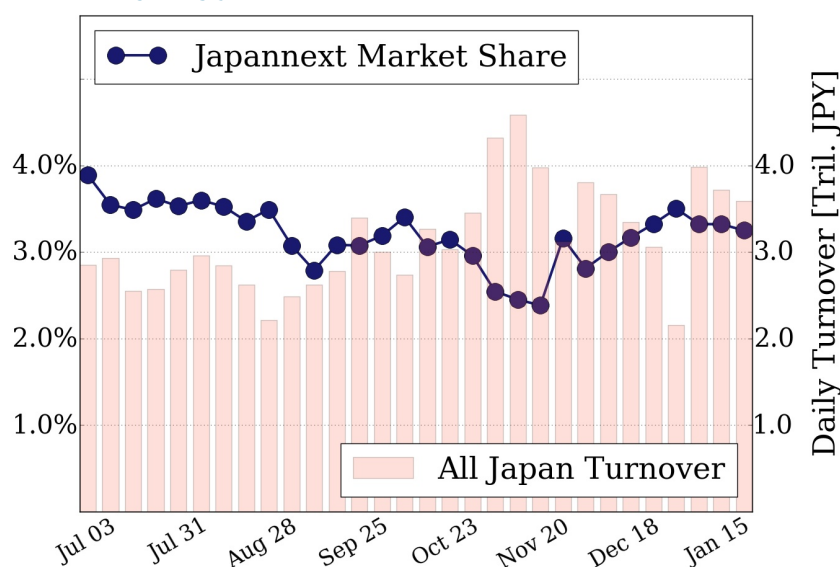
Topix 100
1.8 %

Nikkei 225
3.0 %

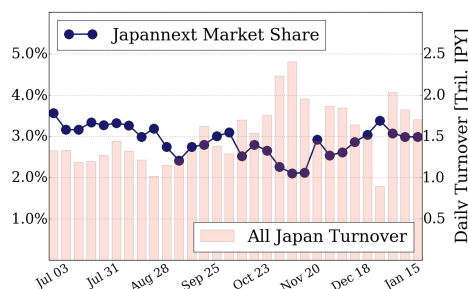
Topix 100



All Market



Nikkei 225



Top Stocks by Turnover

Stock	Value (JPY)	Share	PI (bps)
1570 NIKKEILV	12,368,219,314	1.60%	1.12
6506 YASKAWA	12,309,987,500	7.98%	5.33
7974 NINTEND	9,936,702,000	1.37%	1.21
6502 TOSHIBA	6,953,205,600	12.53%	9.58
6954 FANUC	6,541,828,900	2.29%	2.07

Top Stocks by Market Share

Stock	Value (JPY)	Share	PI (bps)
4689 YAHOO J	4,082,968,150	13.87%	6.12
9831 YAMDADK	1,852,532,360	13.77%	5.01
3765 GUNGHO	1,315,375,650	13.70%	9.22
9684 SQENIXHD	2,115,657,700	13.32%	5.26
5703 NLM HD	996,824,180	12.54%	10.36

Top Stocks by Price Improvement

Stock	Value (JPY)	Share	PI (bps)
8918 LAND	250,861,210	11.00%	242.47
3250 ADWORKS	223,480,800	1.71%	77.47
2315 CAICA	418,154,210	9.99%	46.87
3528 PROSPECT	1,079,067,600	11.06%	46.67
9704 AGORA HG	243,311,300	5.77%	46.21

Top Stocks by Savings

Stock	Value (JPY)	Share	Savings
6502 TOSHIBA	6,953,205,600	12.53%	5,593,700
6506 YASKAWA	12,309,987,500	7.98%	5,039,200
8918 LAND	250,861,210	11.00%	4,058,000
3528 PROSPECT	1,079,067,600	11.06%	3,112,200
4689 YAHOO J	4,082,968,150	13.87%	1,972,730

- ▶ Analysis is based on SBI Japannext and Thomson Reuters data. Large Cap = TPX100, Mid Cap = TPX500 excl. TPX100, Small Cap = Section1 + Section2 excl. TPX500.
- ▶ All Japan Turnover = Japannext (J+X+U+N) + TSE (excl. Tostnet) + Chi-X (excl. Chi-Match, Chi-Select). Market Share = Japannext turnover / All Japan Turnover.
- ▶ Price Improvement (PI) and Savings (PI*volume) are calculated by comparing the execution price against the primary market's best bid for each sell or best offer for each buy at the point of execution from the taker's perspective. Reported PI is a value-weighted average. Names with weekly traded value less than 100,000,000 JPY are excluded from the rankings tables.